



13386 INTERNATIONAL PKWY.
JACKSONVILLE, FL 32218
800.3471200
904.741.5400 (INT'L ONLY)
SAFARILAND.COM

©2020 Safariland, LLC

In-Ear Impulse Hearing Protection

ENGLISH - USER INSTRUCTIONS, WARNINGS, WARRANTY & CERTIFICATION

ESPAÑOL - INSTRUCCIONES PARA USUARIO, ADVERTENCIAS & GARANTÍA

FRANÇAIS - MANUEL D'UTILISATION, AVERTISSEMENTS & GARANTIE

ITALIANO - ISTRUZIONI PER L'USO, AVVERTENZE & GARANZIA

VERSION: PR-0833U 10-12-2020

ENGLISH

USER INSTRUCTIONS

THE PRODUCT CONSISTS OF TWO PARTS: THE PILL SHAPED FILTER AND THE REUSABLE UNIVERSAL FIT EAR TIP (Image A). **THE FILTER IS SUPPLIED FITTED INTO THE LARGE EAR TIP** (7-12mm). First insert the large ear tip into the ear canal by following the instructions (1. Inserting into the ear). If the tip is difficult to insert into the ear canal or feels uncomfortable place the filter into the medium size ear tip (6-11mm) by following the instructions (3. Changing ear tip size).

Please contact us if it is not possible to achieve a proper seal with the supplied tip sizes. A small size ear tip (5-10mm) and an extra large size ear tip (8-14mm) are available on request.

1. Inserting into the ear

- ENSURE THE FILTER IS CORRECTLY POSITIONED IN THE EAR TIP** (Image G, H & I).
- Grip the tongue of the ear tip between thumb and forefinger (Image B).
- Pull the top of the ear outward and upward to ease insertion: This is best achieved by holding the ear with the opposite hand, the arm placed around the back of the head (Image C).
- Position the tongue at the top of the ear making it easier to find and grip when removing the tip from the ear (Image D).

- Gently push and twist the product into the ear until it sits comfortably in the ear canal whilst forming a good seal with the ear canal.

2. Removing, Cleaning and Storage

- Find and grip the tongue of the ear tip (Image D).
- Remove the product with a slow twisting motion to gradually break the seal with the ear canal. This also eliminates any discomfort that may be felt during removal.
- Clean the ear tip after each use to remove earwax (Cerumen) and other debris: The ear tips can be wiped clean with a damp cloth or antibacterial cleaning tissues.
- Always store the product in a clean resealable protective case or bag. Do not store with other objects. Recommended storage temperature range is between -10° C and 50° C.

After removing the filter (3. Changing ear tip size), the ear tips can be cleaned with soap or hygiene tablets and then rinsed in tepid water and dried thoroughly.

We recommend only cleaning the filter if necessary. Do not use alcohol-based cleaning solutions, soaps or detergents. After cleaning the filter needs to be thoroughly rinsed in tepid water and allowed to dry slowly.

3. Changing ear tip size

- Remove the filter from the current ear tip: Gently squeeze the ear tip just below the filter until it 'pops' out of the ear tip (Image E).
- Before placing the filter ensure that the logo in the filter is facing upward, so the logo will face out of the ear tip once inserted (Image A & I).
- Insert the filter into the larger opening of the ear tip: This is best achieved by inserting the filter at an angle, pushing the lower side of the filter in first (Image F).
- Press down on the logo to correctly position the filter in the cavity of the ear tip (Image G, H & I).
- Insert the ear tip into the ear canal by following the instructions (1. Inserting into the ear).

WARNINGS

- If these instructions and warnings are not adhered to, the protection afforded by the product will be severely impaired.
- The product is intended to be placed in the ear and to protect the wearer from hazardous noise levels. The product is not intended for any other use.
- CHOKING HAZARD** - Keep the product out of reach of young children.
- The product must be fitted, adjusted and maintained in accordance with the instructions. Improper fitting can reduce its effectiveness in attenuating noise.
- In order to achieve the designed attenuation level, it's important that the outside of the ear tip has an airtight seal with the ear canal.
- Periodically check and, if necessary, correct the seal to ensure there has been no loosening of the product over time while in the ear.
- Performance of the product may be reduced after contact with sharp objects e.g. by puncturing or cutting (Image K).
- Regularly inspect the product to ensure serviceability (Image J).
- The product may be adversely affected when coming into contact with chemicals or alcohol.
- Please ensure that the product and both hands are clean before insertion in order to reduce the risk of infection. Sharing the product can increase the risk of infection.
- Sudden or fast removal of the product out of the ear canal may damage the eardrum.
- Suitable hearing protection must be worn at all times in noisy surroundings.

ALWAYS USE DOUBLE HEARING PROTECTION IN INDOOR SHOOTING RANGES.

- You are responsible for evaluating whether the use of the product affects the ability to safely perform an activity. Stop the activity when the product is distracting or disruptive.
- It is not recommended to use the product three (3) years after the production date (see outside packaging). The specified attenuation of the product can then no longer be guaranteed.

LIMITED WARRANTY

Safariland, LLC warrants its products to be free from defects in materials and workmanship for a period of two (2) years from date of purchase. If you believe this product has any defects in materials or workmanship, cease use immediately and contact customer service for help. If a product proves to be defective in material or workmanship, we will repair or replace the product and send it to you at Safariland's expense. All returns must include the proof of purchase and documentation specifying the claimed defect. This LIMITED WARRANTY applies only where the products have been properly maintained in accordance with the Safariland's instructions and have not been subject to misuse negligence or accident. No returns are to be made directly to Safariland unless authorized by the Returns Authorization (RMA) Department.

THIS WARRANTY IS GIVEN IN LIEU OF ALL OTHER WARRANTIES EXPRESS OR IMPLIED, WHICH ARE SPECIFICALLY EXCLUDED. INCLUDING WARRANTIES FOR MERCHANTABILITY OR FITNESS FOR A PARTICULAR PURPOSE. IN NO EVENT SHALL DEC OR SELLER BE LIABLE FOR INCIDENTAL AND CONSEQUENTIAL DAMAGES OR EXPENSES TO THE FULL EXTENT SUCH MAY BE DISCLAIMED BY LAW.

CERTIFICATION

The level of noise entering a person's ear, when hearing protection is worn as directed, is closely approximated by the difference between the A-weighted environmental noise level and the Noise Reduction Rating (NRR).

Example:

- The environmental noise level as measured at the ear is 92 dBA.
- The NRR is 13 decibels (dB).
- The level of noise entering the ear is approximately equal to 79 dB(A).

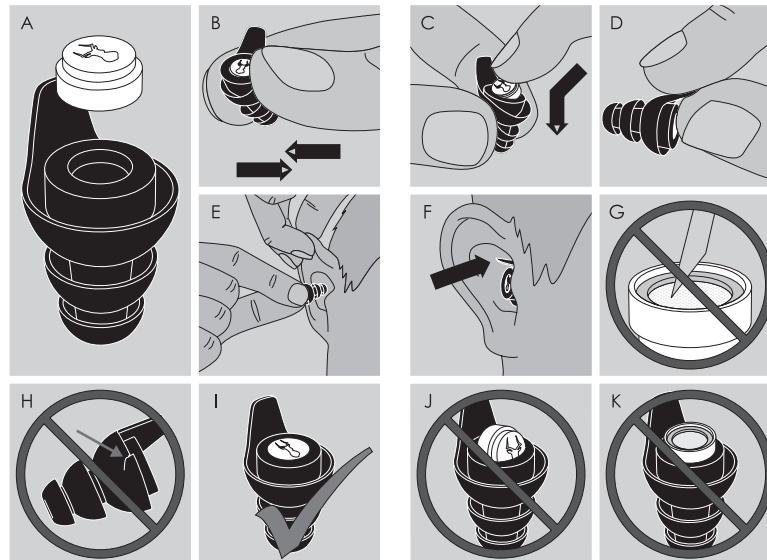
CAUTION: For noise environments dominated by frequencies below 500 Hz the C-weighted environmental noise level should be used.

The NRR is based on the attenuation of continuous noise and may not be an accurate indicator of the protection attainable against impulsive noise such as gunfire. For an indication of the protection attainable against impulsive noise, see the Impulse Insertion Loss (IPL) data.

Safariland, LLC in partnership with Dynamic Ear Company, declares that the hearing protection is in compliance with PPE regulation EU 2016/425.

The full text of the EU declaration of conformity can be found at the following link:
www.dynamic-ear.com/content/DoC-SA1.pdf

The tests conducted to ANSI S3.19-1974 and EN 352-2:2002 and certification to the regulation EU 2016/425 and the production control module D was performed by PZT GmbH, Bismarckstraße 264 B, 26389 Wilhelmshaven, #1974, Germany.



ANSI certification (U.S. standards)

F (Hz)	125	250	500	1000	2000	3150	4000	6300	8000	NRR
Mean Attenuation (dB)	13.9	14.0	15.2	18.4	26.6	30.4	26.8	20.1	26.8	13 dB
Standard Deviation (dB)	4.3	3.6	2.7	2.7	3.0	3.7	3.6	2.4	4.3	
APV (dB)	5.3	6.8	9.8	13.0	20.6	-	21.3	-	16.8	

CE certification data (European standards)

F (Hz)	63	125	250	500	1000	2000	4000	8000	SNR		
Mean Attenuation (dB)	12.8	13.6	15.5	15.7	18.7	27.7	27.1	27.4	19 dB		
Standard Deviation (dB)	4.1	3.2	4.2	3.4	2.7	4.4	5.4	4.6	H	M	L
APV (dB)	8.7	10.4	11.3	12.3	16.0	23.3	21.7	22.8	21 dB	16 dB	13 dB

ANSI Impulse Peak Insertion Loss (IPL) data

	130 dB	150 dB	158 dB	166 dB	110 dB	130 dB	150 dB	166 dB
Impulse peak level	130 dB	150 dB	158 dB	166 dB	35 dB			
Impulse peak insertion loss	26.3 dB	31.1 dB	33.0 dB	33.7 dB	30 dB			

This data has been acquired by testing for peak levels 130 dB and 150 dB (according to ANSI S12.42-2010) and by estimation for peak levels 158 dB and 166 dB (based on test data of similar products).

Document number:	Version:	Date:	Trim size:	Print:	Approval:
PR-0833	U	10-12-2020	265x150mm	grayscale, double-sided	
Document name:	Paper:	Finish:			
Safariland Manual Pro Impulse	90gsm (silk mc)	fold to 53x75mm; 4x vertical zigzag, 1x horizontal			

