

## OWB WEAR CONVERSION (CONTINUED)

### OWB BELT LOOP INSTALLATION

As seen in Figure 7, each of the two OWB Belt Loops (11) can be easily installed and replace either the IWB Blank (4) or Tuck Device (8) components of the IWB configuration. Simply unscrew one set of the three Side Screws (5) at a time, swap out the Tuck Device and IWB Blank component with an OWB Belt Loop and reinstall the screws. Both OWB Belt Loops need to be installed to maintain a function holster and OWB mounting style. These belt loops will accommodate up to an 1-3/4" belt size for a flexible style belt and up to 1-5/8" for a rigid style belt.

### J-HOOK REMOVAL

The J-Hook IWB mounting feature can be easily removed by unscrewing the J-Hook Screw (1). After removal of the J-Hook, the barrel of the slab nut will be protruding through the Leather Front (6). This should be capped off with the Thumb Screw (13), as shown in Figure (7) to prevent damage to the nut and prevent the metal barrel from against the gun or clothes.

## UNIVERSAL KITS & PRD INSTALLATION

If the Shenandoah purchased is a Universal Model, this holster has the ability to be reconfigured to work with several firearm models. This is achieved by matching the appropriate PRD with gun model and ensuring that this PRD is properly installed in the holster. The default configuration Shenandoah Universal Models are built to is the Glock 43. If the firearm being used in the holster doesn't match the fit list of the Glock 43, then one of the other PRDs provided need to be installed.

To replace a PRD, remove the two PRD Screws (10) as shown in Figure 1 and slide the PRD out the bottom of the holster. Identify the correct PRD (9) based on the fit list and the engraving on the PRD. To install the slab nuts (17) in the PRD correctly, insert the nut barrel in the associated pocket hole, from the side that corresponds to the holster. For example, the correct installation for the two slab nuts on a Glock 43 PRD is shown in Figure 8. Note that the "R" engraving is facing the same side as where the slab nuts are installed. Position the PRD back into the holster body and reinstall the two PRD Screws.

PRD Installation

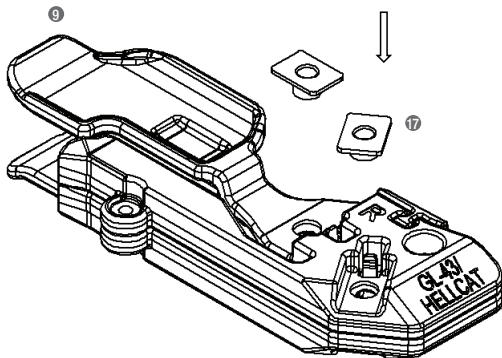


Figure 8

## CARE AND MAINTENANCE

The product you have received is constructed with a proprietary SafariSeven™ material. Care and maintenance of this product are dictated by the material from which it is constructed. Use of an incorrect cleaning material will result in damage to the finish of the product.

SafariSeven can be cleaned by wiping with a damp cloth. Any liquid or powder soap and water along with a scouring pad will assist in cleaning. Matte finish decreases reflection and can be maintained with a simple scouring pad

**WARNING:** Never store your Safariland holster or accessories near a heat source. Space heaters, radiators, heating registers, fireplaces, or other heating sources emit high temperatures that can deform or destroy the polymer from which many Safariland products are manufactured. The non-reflective surface on Safariland products will efficiently absorb radiant heat and can reach temperatures in excess of 200 degrees Fahrenheit, even several feet away from certain heating sources. Exposure to high heat can cause them to deform, and in some cases can cause the weapon to be locked in place. If you have accidentally exposed your equipment to a heat source, you should immediately remove it from the area, allow it to cool to room temperature and then operate it to insure correct function.

It is important to note that most natural and man-made products may eventually "wear out" or become unsuitable for the function for which they were designed. Stress and strain placed on any given holster will vary according to usage; therefore it is difficult to indicate a recommended replacement date for this product. It is the user's responsibility to assure, after use, that the holster is able to continue service within its design parameters.

It is the user's responsibility to daily inspect the holster for signs of excessive wear, or loss of retention of the handgun, and tightness of all screws and hardware. If any possible problem is detected or any doubt exists, do not use. Call Safariland's Customer Service at (800) 347-1200.

For any questions, please contact Safariland Customer Service at (800) 347-1200.

Safariland holsters are designed to carry specific handguns. Before use, be sure holster selected is designed to carry corresponding handgun. If there is any doubt, do not use holster.

**WARNING:** Carrying a handgun in an ill-fitting or improper holster can result in serious injury or death. The purchase and use of this Safariland holster is done at the sole and exclusive risk of the user.

  
**SAFARILAND™**

A BRAND OF THE SAFARILAND GROUP  
TOGETHER, WE SAVE LIVES™

3041 FAYE ROAD, JACKSONVILLE, FL 32226  
(800) 347-1200 (USA ONLY) OR (909) 923-7300 | FAX (909) 923-7400

© 2021 SAFARILAND, LLC

## USER GUIDE



**BIANCHI™**  
LEATHER

INNOVATION NOT IMITATION™

MODEL

175  
SHENANDOAH



**IMPORTANT**  
READ AND UNDERSTAND  
ENTIRE GUIDE BEFORE USING.

READ BEFORE USE

FOLLOW INSTRUCTIONS CAREFULLY.  
RETAIN FOR FUTURE REFERENCE.

## OVERVIEW

The Safariland Model 175, Shenandoah is an end-user configurable IWB (inside-waistband) or OWB (outside-waistband) passive retention hybrid holster. Firearm retention inside the holster is assisted by a gun model specific Primary Retention Device (PRD). Holstering is easy and the user will feel and hear a click when the firearm is properly seated into the holster. While the PRD helps secure the firearm in the holster during normal wear and activity, drawing the firearm is easy as the PRD is engineered to flex-open and release the weapon during a typical drawing motion. The holster's hybrid construction combines the quality, feel and aesthetic of a leather holster front with an engineered polymer back for improved wear comfort and durability. Dual wear style (IWB or OWB) configurability, along with optimization accessories included with the holster should allow for a comfortable fit on any body type and in any wear location on the waistline.

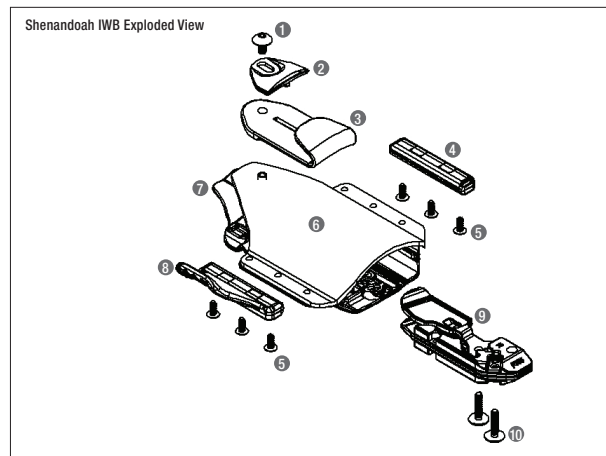


Figure 1

## UNBOXING

As seen in Figure 1, each Model 175 Shenandoah holster is preconfigured to an IWB mounting style with the firearm model specific PRD (9) installed. The PRD model is engraved with a firearm identification marking that is visible through the bottom opening of the holster and should match the product packaging's model labels. The Shenandoah holster is preconfigured to an IWB mounting style that features the Tuck Device (8) option preinstalled. The Tuck Device should enhance concealment, in most wear locations, by pulling the grip of the gun closer to the body. The default behind-the-belt style IWB mounting J-Hook (3) accommodates belt sizes from 1.5" to 1.75" for the Small Barb J-Hook Tab (2) set-up. A Large Barb J-Hook Tab (12) is included in the Accessory Pack and will accommodate a belt size between 1.0" and 1.375". Proper placement of the holster is such that the holster body and firearm is inside the waistband while the J-Hook wraps behind and around the belt's lower edge while being secured in place by the Tab on the belt's upper edge.

If Shenandoah and firearm model being used is for the Glock 43 there may be an additional step needing to be completed prior to using the holster. The PRD is preconfigured for a Glock 43 non-rail version. If the Glock 43 being used in the holster is equipped with a rail, then the PRD Insert needs to be removed as shown in Figure 2. If you have a right-hand model holster, hold the holster in your hand, squeeze the sides of the holster to flair out the leather front, and then slide the PRD Insert towards the leather. This will disengage the PRD Insert from its locking channel and allow it to be removed. If you have a left-hand model holster the PRD will need to be removed before the PRD Insert can be removed.

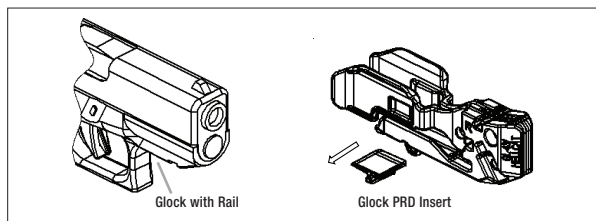


Figure 2

## IWB FIT ENHANCEMENTS

### TUCK DEVICE

The Tuck Device enhances concealment by leveraging the wearer's belt tension and pants or shorts waistline to pull the holster in and closer to the body. As seen in Figure 3, this optional feature can be easily replaced with an IWB Blank (4) component, if desired, by removing the three Side Screws (5). Simply unscrew the three screws, swap out the Tuck Device and IWB Blank parts and reinstall the screws. Ensure the curved edge of the IWB Blank is orientated inward, towards the holster body as shown in Figure 4. Either the Tuck Device or IWB Blank needs to be installed to maintain a functional holster and IWB mounting style.

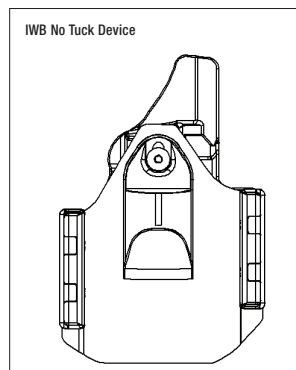


Figure 3

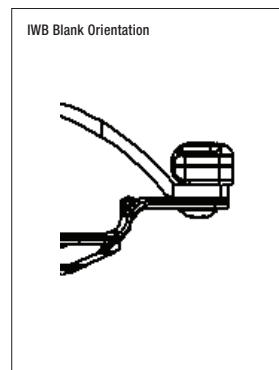


Figure 4

### BELT SIZE

The default behind-the-belt style IWB mounting J-Hook accommodates belt sizes from 1.5" to 1.75" for the Small Barb J-Hook Tab (2) set-up. A Large Barb J-Hook Tab (12) is included in the Accessory Pack (Figure 5) and will accommodate a belt size between 1.0" and 1.375". Swapping out the Barbs is easily achieved via the J-Hook Screw (1).

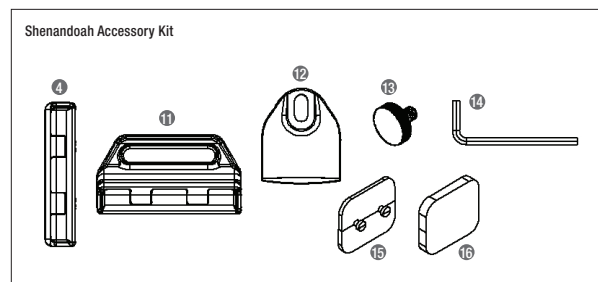


Figure 5

## APPENDIX PADS

An Appendix Pad (16) is provided in the Accessory Pack to provide additional wear comfort or to provide counterbalance against the body for enhancing concealment. Remove the adhesive backing of the pad and stick it to the flat side of the Appendix Pad Base (15). Insert the barbed posts of the Appendix Pad Base into the key-hole slots of the PolyBack (7). Rotate clockwise to lock it into position as shown in Figure 6. Check for proper up and down draw as well as desired concealment once installed. To remove, rotate the counter-clockwise while slightly pulling upwards.

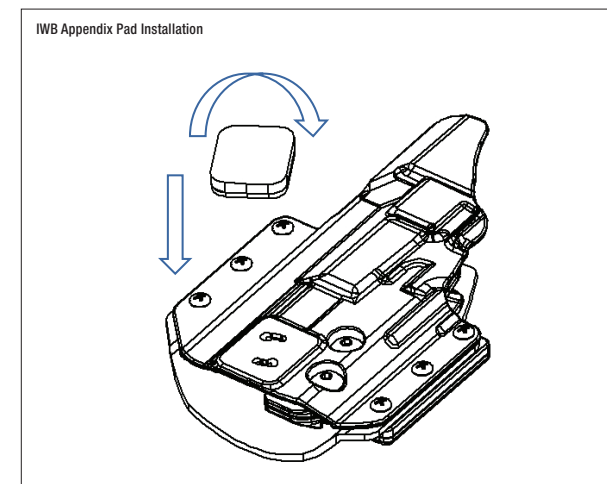


Figure 6

## OWB WEAR CONVERSION

The holster can be reconfigured, from the default IWB, to an outside-waistband (OWB) wear style. As seen in Figure 7, there are two easy steps to achieve this.

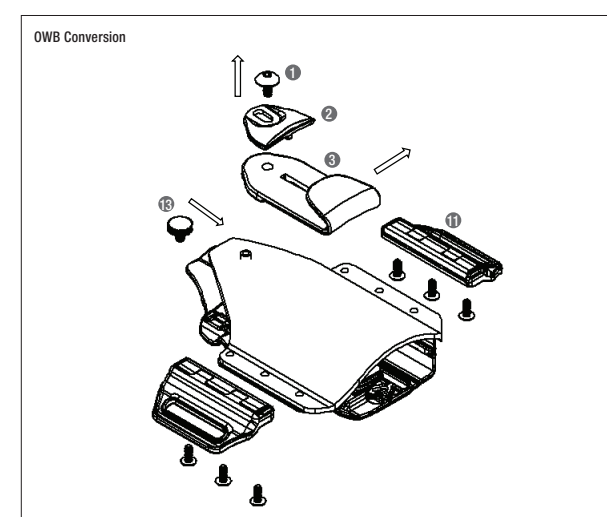


Figure 7