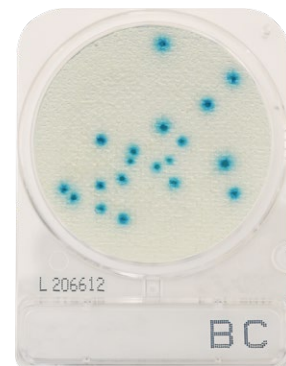


CompactDry™

CompactDry™ is a ready to use petri plate containing a dehydrated culture media matrix that offers a variety of organism-specific or total count tests. Chromogenic substrates, provide easy organism differentiation, identification and counting.



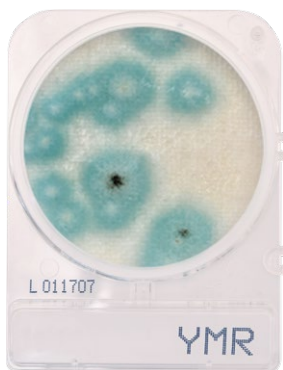
HardyDiagnostics.com • Sales@HardyDiagnostics.com • 800.266.2222



CompactDry™ BC Total Count

For the presumptive detection of *Bacillus cereus* in raw materials, finished products, or on environmental surfaces pertaining to food and other related industries.

100/PK XBC100



CompactDry™ YMR Yeast and Mold Rapid

For the isolation and enumeration of yeast and mold. Yeast colonies will appear blue, and molds will form cottony colonies with characteristic colors.

Incubation time: 48-72 hrs.

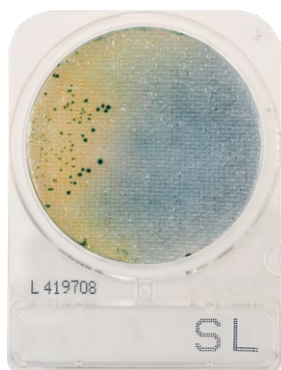
240/PK 54084



CompactDry™ TCR Total Count Rapid

For total aerobic viable bacterial count using traditional or rapid enumeration methods. Growing colonies will appear red.

240/PK 54088



CompactDry™ SL Salmonella

For the presumptive identification of *Salmonella* spp. Growing colonies will appear green or blue-green with black centers.

240/PK 54085



CompactDry™ LS Listeria

For the selective growth, presumptive identification, and enumeration of *Listeria* spp. Growing colonies will appear blue.

100/PK LS100



CompactDry™ EC E. coli and Coliforms

For the isolation and enumeration of coliforms and *E. coli*. Coliform colonies will appear red, and *E. coli* colonies will appear blue.

240/PK 54082

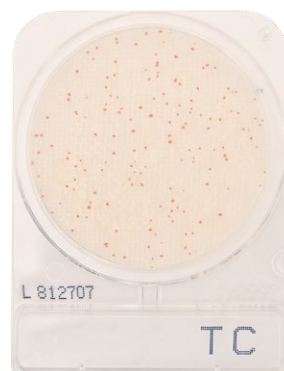


CompactDry™ YM Yeast and Mold

For the isolation and enumeration of yeast and mold. Yeast colonies will appear blue, and molds will form cottony colonies with characteristic colors.

Incubation time: 3-5 days.

240/PK 54083



CompactDry™ TC Total Count

For total aerobic viable bacterial count. Growing colonies will appear red.

240/PK 54081



CompactDry™ PA Pseudomonas aeruginosa

For the enumeration of *Pseudomonas aeruginosa* in food samples, feedstuffs, water, cosmetics, and beverages, or material samples from related industries.

100/PK PA100



CompactDry™ ETB Enterobacteriaceae

For the isolation and enumeration of *Enterobacteriaceae* that will appear red in color.

100/PK ETB100



CompactDry™ XSA Staphylococcus aureus

For the selective growth, enumeration, and differentiation of *Staphylococcus aureus*. Growing colonies will appear light blue to blue.

240/PK 54086