

Reagent

Positive
Reagent

ST200C

ST200B

TEST PENDING

1

2

ORGANISM ID

by

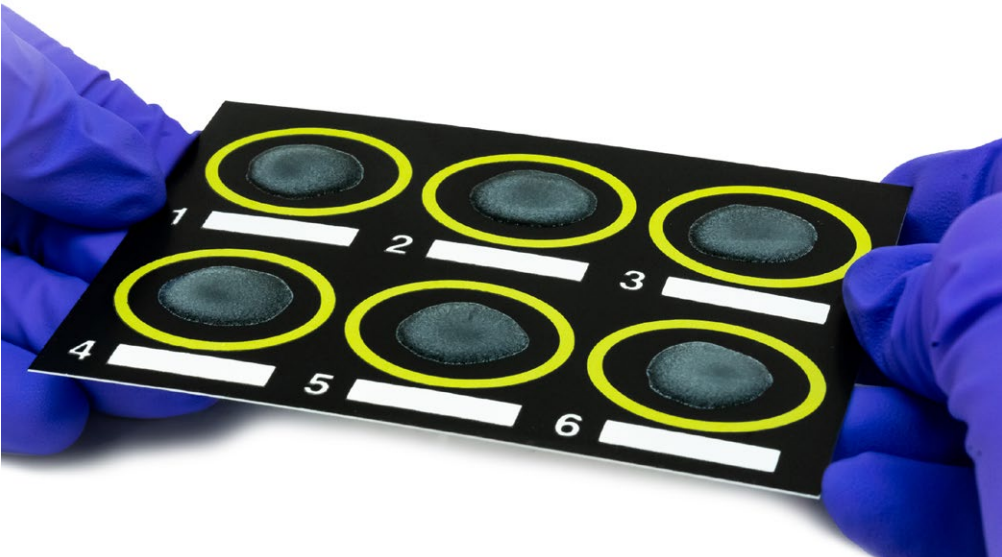
- **Chromogenic**
- **Biochemical**
- **Latex Agglutination**
- **Mass Spectrometry**

Methods

ORGANISM ID

Contents

- 2 Latex Agglutination Kits
- 3 Biochemical Tests
- 4 Biochemical Reagents
- 5 HardyCHROM™ Chromogenic Media
- 8 CompactDry™ for Colony Counting
- 11 Environmental Monitoring
- 13 Quality Control Organisms
- 14 MALDI-TOF Mass Spectrometry



Latex Agglutination Kits

Microgen® Salmonella Latex Test

A rapid alternative to the traditional identification methods for detection of *Salmonella* spp., including *Salmonella typhimorium* and *S. enteritidis*. Additionally, it employs highly specific flagella antisera which reduces potential cross-reactivity with non *Salmonella*.

50/pk F42



Microgen® Legionella Latex Test

A rapid latex agglutination test that providing results in two minutes directly from a selective medium for the confirmatory identification of *Legionella pneumophila* Serogroup 1 and Serogroup 2-15.

50/pk M45



StaphTEX™ Test for *Staphylococcus aureus*

A latex agglutination test that produces clear and reliable results when testing for *Staphylococcus aureus*. The plasma-coated blue latex beads create an easy to interpret read-out.

50 tests ST50

200 tests ST200

1,000 tests ST1000



*E. coli*PRO™ O157 Latex Kit, Rapid Latex Agglutination Test for *E. coli* O157

A rapid latex agglutination test kit for the presumptive identification of *E. coli* O157. It uses proprietary antibodies that eliminate the possibility of cross-reactions with *Escherichia hermanii* and other sorbitol-negative *Escherichia* species. Rapid results in just 2 minutes.

50 tests PLO70HD



MICROGEN

Biochemical Tests

Microgen® GN-ID A

Microgen® GN-ID A is a convenient 12 substrate ID system for the most commonly isolated *Enterobacteriaceae* from food samples. With its standardized biochemical substrates and ease of use, obtain a reliable identification in just 24 hours.
60/tests MID64CE



Microgen® GN-ID B

The GN-ID B microwell test strips are intended to be used together with the GN-ID A kit to produce a 24 substrate system to identify non-fastidious Gram-negative bacilli (oxidase negative and positive) and all currently recognized species of the family *Enterobacteriaceae*.
24/tests MID65

Microgen® Listeria-ID

For the identification of *Listeria* spp in foods and environmental samples, including a built-in hemolysis reaction for optimized differentiation of hemolytic and nonhemolytic *Listeria* spp., thereby eliminating the need for further testing.
24/tests MID67



Biochemical Reagents

Description	UOM	Cat. no.
Catalase Reagent		
Hydrogen Peroxide 3%, SpotDrops, 15ml	Each	Z62
Hydrogen Peroxide 3%, H ₂ O ₂ , 60ml	Each	Z76
Hydrogen Peroxide 15%, SpotDrops, 15ml	Each	Z262
Oxidase		
OxiStrips™, Oxidase Strips	25/pk	Z93
OxiSticks™ Oxidase Swabs	25/pk	Z193
OxiDrop™, Liquid Oxidase Reagent, 15ml	Each	Z119
Indole		
Indole Spot Reagent, 15ml	Each	Z65
SpotDrops, Indole Kovac's Reagent, 15ml	Each	Z67
Indoxyl Acetate		
Indoxyl Acetate Disks	25/pk	Z111
Voges-Proskauer Reagents		
SpotDrops, Voges-Proskauer Reagent A, VP-A, Alpha Naphthol, 15ml	Each	Z91
SpotDrops, Voges-Proskauer Reagent B, VP-B, KOH 40%, 15ml	Each	Z92



HardyCHROM™

Chromogenic Media for use in Clinical, Environmental, Food, & Veterinary laboratories

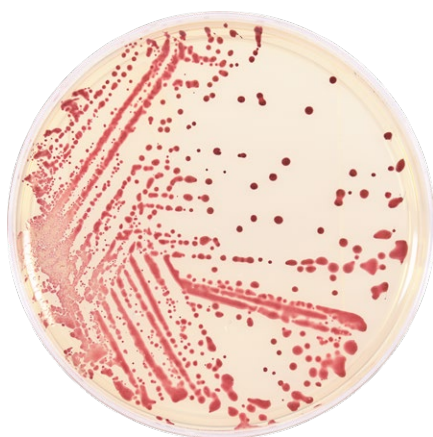
Hardy Diagnostics has developed the largest line of chromogenic media in the US. Hardy's formulas are unique and have been meticulously and painstakingly developed by our R&D microbiologists, who must test hundreds of formulas before discovering the optimal combination of ingredients for the final product. This results in a medium that assists microbiologists in making rapid and accurate identifications based on colony color, thus simplifying the procedures and saving time as well.

HardyCHROM™ Campy

For the selective isolation and chromogenic differentiation of *Campylobacter* spp. from direct stool cultures or from food and poultry samples. *Campylobacter* spp. will appear as red colonies.

15x100mm plate, 10/pk

G339

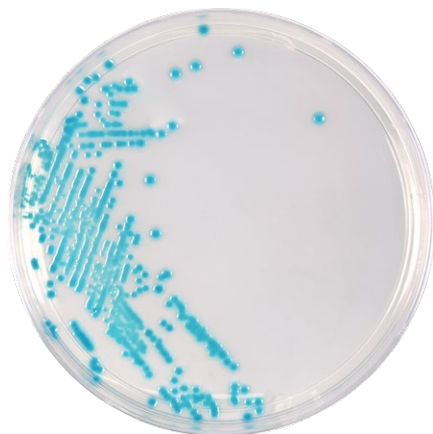


HardyCHROM™ ECC (*E. coli* and Coliforms)

For the detection, differentiation, and enumeration of *Escherichia coli* and other coliforms in food, beverage, or water samples based on colony color. *E. coli* can be identified as pink to violet-colored colonies on the plate, while coliform bacteria will appear as turquoise colonies.

15x100mm plate, 10/pk

G303

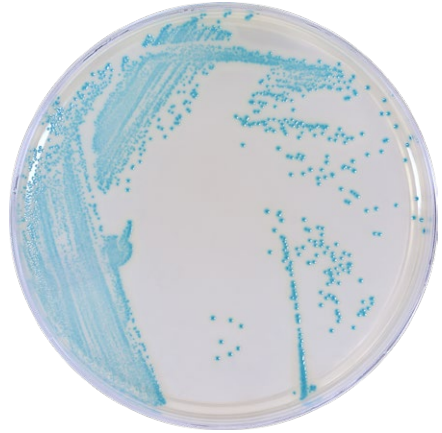


HardyCHROM™ *Listeria*

A chromogenic medium recommended for the selective isolation, differentiation, and enumeration of *Listeria monocytogenes* from food and environmental samples. *Listeria* species will produce turquoise colonies. *Listeria monocytogenes* and *Listeria ivanovii* will produce turquoise colonies with opaque halos.

15x100mm plate, 10/pk

G317



HardyCHROM™ *Sakazakii*

For the selective isolation and differentiation of *Cronobacter sakazakii* from other members of the family *Enterobacteriaceae* based on colony color. *C. sakazakii* produces smooth, blue-green colonies on HardyCHROM™ *Sakazakii* as a result of unique bacterial enzyme interactions with chromogenic substances.

15x100mm plate, 10/pk

G315

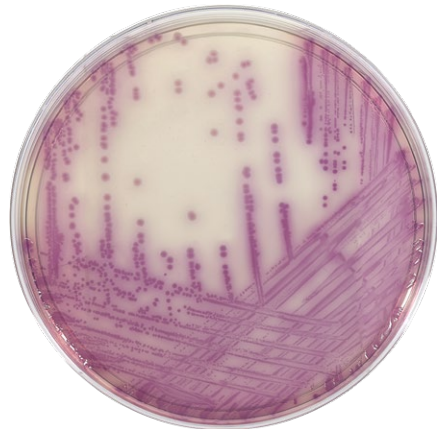


HardyCHROM™ *Salmonella*

For the selective isolation and differentiation of *Salmonella* spp. from other members of the *Enterobacteriaceae* family based on colony color. Selective agents inhibit the growth of Gram-positive organisms. *Salmonella* species will produce deep magenta-colored colonies. Bacteria other than *Salmonella* spp. may produce blue or clear colonies.

15x100mm plate, 10/pk

G309



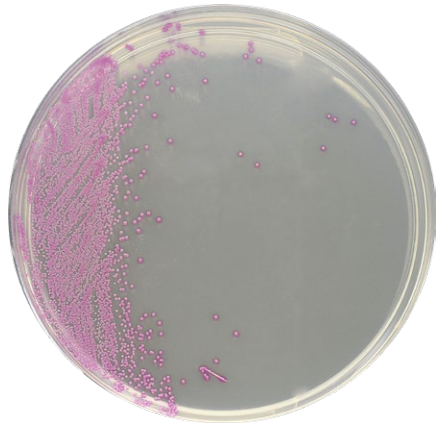
HardyCHROM™ O157

A selective and differential medium recommended for the isolation of enterohemorrhagic *E. coli* O157 from food and environmental sources. Chromogenic substances in the media facilitate detection by colony color. Not intended for human diagnostic use.
15x100mm plate, 10/pk G305



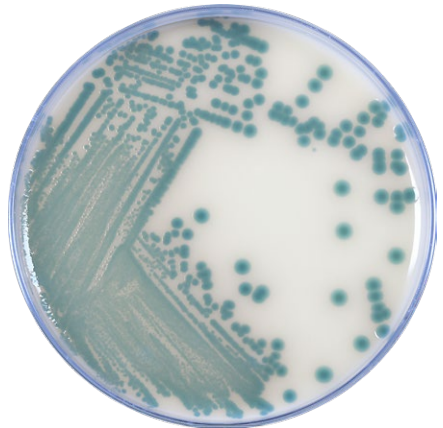
HardyCHROM™ Staph aureus

For the isolation, differentiation, and reliable detection of *Staphylococcus aureus*. *Staphylococcus aureus* can be identified as smooth, pink-colored colonies on the plate. Other organisms may appear as colorless, blue, turquoise, or cream colonies, or will be inhibited. *Staphylococcus epidermidis* will be inhibited, partially to completely.
15x100mm plate, 10/pk G311



HardyCHROM™ Vibrio

For the isolation of pathogenic *Vibrio* spp. from food and environmental sources. HardyCHROM™ Vibrio was developed as a medium for differentiating *Vibrio cholerae*, *Vibrio parahaemolyticus*, and *Vibrio vulnificus* from other *Vibrio* spp. based on colony color.
15x100mm plate, 10/pk G319



CompactDry™

Simple and Effective System for Colony Counting

The CompactDry™ plate line presents a variety of organism-specific or total count tests, packaged nicely in a sophisticated and sturdy cassette. Designed to save technician time while performing colony counts on Food, Beverage, Cannabis, Cosmetics, Environmental, Meat, and Raw Material samples.

CompactDry™ ETB

Enterobacteriaceae

For the isolation and enumeration of *Enterobacteriaceae* that will appear magenta in color.

Genera of *Enterobacteriaceae* consists of:

Citrobacter, *Enterobacter*, *Escherichia*, *Klebsiella*, *Proteus*, *Salmonella*, *Serratia*, *Shigella*, *Yersinia* and more.

100/pk

ETB100



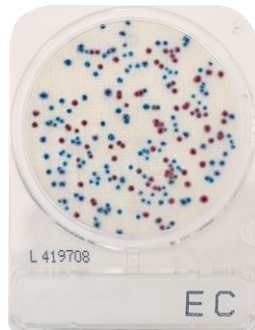
CompactDry™ EC

E. coli and Coliforms

For the isolation and enumeration of coliforms and *E. coli*. Coliform colonies will appear red, and *E. coli* colonies will appear blue.

240/pk

54082



CompactDry™ TC

Total Count

For the determination of total aerobic bacterial counts. Viable organisms will appear as red colonies.

240/pk

54081



CompactDry™ TCR
Total Count Rapid

For the determination of total aerobic bacterial counts with enumerated results in as little as 24 hours. Viable organisms will appear as red colonies.

240/pk 54088



CompactDry™ CF
Coliforms

For the detection of coliforms. Coliforms appear as blue/blue-green colonies, as the formulation contains the chromogenic enzyme substrate X-GAL. The growth of bacteria other than coliforms is largely inhibited, but will appear as colorless colonies when growth is present.

240/pk 54053



CompactDry™ YM
Yeast and Mold

For the isolation and enumeration of yeasts and mold. Yeasts will appear as blue colonies, while molds will form cottony colonies with characteristic colors.

240/pk 54083



CompactDry™ YMR
Yeast and Mold Rapid

For the isolation and enumeration of yeasts and mold, with results in as little as 72 hours. Yeasts will appear as blue colonies and molds will form cottony colonies with characteristic colors.

240/pk 54084



CompactDry™ SL

Salmonella

For the isolation and differentiation of *Salmonella* species. *Salmonella* spp. will appear as green or blue-green, with or without black centers with a yellow background.

240/pk 54085



CompactDry™ LS

Listeria

For the selective growth, presumptive identification, and enumeration of *Listeria*. *Listeria* colonies will appear light blue to blue in color.

100/pk.....LS100



CompactDry™ X-SA

Staphylococcus aureus

For the selective growth, enumeration, and differentiation of *Staphylococcus aureus*.

240/pk 54086



CompactDry™ BC

Bacillus cereus

For the detection of *Bacillus cereus* in raw materials, finished products, or on environmental surfaces pertaining to food and other related industries.

240/pk XBC100



Environmental Monitoring



This ready-to-use swab and tube is pre-filled with your choice of sampling diluents. Simply remove the cap, collect your sample by swabbing the surface, recap, and send to the lab. The solution can then be inoculated onto a CompactDry™ plate. Excellent for detection or enumeration of microorganisms from environmental surfaces and hard to reach areas.

Neutralizing Buffer	
2ml, 20/box	SRK20
5ml, 20/box	SRK15

Lethen Broth	
5ml, 20/box	SRK25

Saline 0.85%	
0.5ml, 20/box	SRK05
2ml, 20/box	SRK30
5ml, 20/box	SRK35

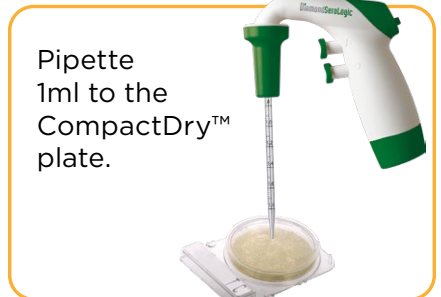
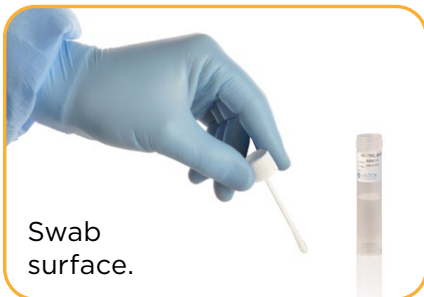
D/E (Dey-Engley) Neutralizing Broth	
5ml, 20/box	SRK45

Neutralizing Saline	
5ml, 20/box	SRK55

Butterfield's Phosphate Buffer	
1ml, 20/box	SRK90



**Pre-Moistened,
Ready-to-Use**



With Hardy Diagnostics, dilution vials are a snap!

The Dilu-Lok™ eliminates the time and money spent on preparing your own dilution vials! Our pre-filled dilution vial is designed especially for the food, dairy, pharmaceutical, and water industries. Our easy-to-use snap lid vials are filled to 25ml, 90ml, or 99ml with a variety of buffering and enrichment solutions. Each lot is tested for pH, sterility, and fill volume.



Convenient write-on area



Easy-to-remove shrink wrap



Heavy Duty - Vials are made of sturdy polypropylene with a leak-resistant seal that holds up even during air transport.

Large Opening - A wide 45mm opening accommodates most sample sizes. Each vial is clearly marked with a 90ml and 99ml fill line.

One-Handed - Flip-top lid allows for easy one-handed opening and closing to make pipetting easier. Saves unnecessary motion! No awkward screw caps or plastic strips to tear off.

Variety - Available with peptone water, TAT broth, buffered peptone water, Butterfield's buffer, deionized water, phosphate buffer with MgCl, and as an empty, sterile container.

Leak-Resistant - Re-engineered for an improved seal. Perforated shrink wrap is easy to remove and ensures product integrity.

Quality Control Organisms Microbiologics®

Hardy Diagnostics is proud to work alongside Microbiologics®, the leading provider of ready-to-use reference strains for microbiological quality control testing.

UV·BioTAG™



UV-BioTAG™ microorganisms contain a Green Fluorescent Protein (GFP) marker integrated into the chromosome that produces fluorescence of the culture visible under UV light. This allows for easy differentiation of these control strains from contaminants.

- Available in swab and vial formats
- UV-BioTAG is an easy-to-use solution for quality control in food labs
- Qualitative product features instant-dissolve pellet to reduce preparation time
- GFP reporter is integrated into the chromosome to provide superior stability
- Assists with investigations of positive test results with quick and reliable differentiation of control strains
- Thoroughly tested to ensure authenticity, stability and compatibility with detection technologies

Scan for our
complete
Microbiologics®
offering



epower™

Epower is the embodiment of “flexibility is your friend”. You’ll love the versatility of simply using one product for all of your QC needs – from media QC and presence/absence testing to enumeration testing, water testing, and disinfectant testing. Use a single strain or combine multiple strains for a mixed population. Each quantitative microorganism pellet delivers a specific range of CFU, so you can easily manipulate Epower to deliver virtually any concentration. We know you’ll appreciate the ease and adaptability that Epower offers.

- **Accredited reference material under ISO 17034 standard**
- Available in concentrations ranging from 10² and 10⁸ CFU per pellet
- Strains are less than or equal to three passages from reference culture
- Can be combined for a mixed microorganism population
- Ready-to-use format to save you time and money
- Refrigerated storage is easy and economical
- Traceability to reference cultures ensures authenticity
- Epower CRM format also available for ISO 17025:2017 compliance

MALDI-TOF Mass Spectrometry

Autof ms1000

The Autof ms1000 provides automated, high-speed and high-confidence identification and taxonomical laser-induced classification of bacteria, yeasts, fungi, and filamentous fungi based on proteomic fingerprinting. Numerous studies have demonstrated the higher accuracy, faster time-to-result, and lower cost provided by MALDI-TOF technology when compared to classical methods.

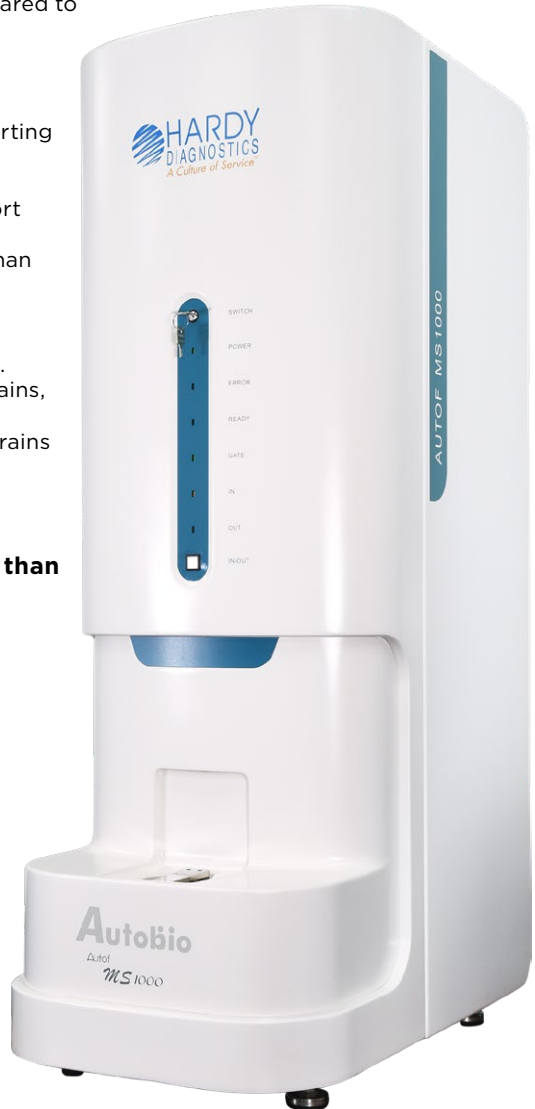
Features:

- Faster time-to-result when compared to conventional methods and PCR
- Cost effective
- Robust, intuitive software, supporting 21 CFR part 11 compliance
- LIMS/LIS connectivity and support
- Can identify 96 samples in less than 20 minutes hands-on time

The Autof ms1000 has the most expansive database in the industry. Created with more than 15,000 strains, each with more than 5 reference spectra, averaging more than 10 strains per species, the database of the Autof ms1000 provides highly accurate results.

**Local database includes more than
1,077 genera,
5,205 species, and
18,375 strains.**

Cat. no. MS1000





HARDY DIAGNOSTICS

A Culture of Service™



Years of
Bringing You
A Culture of Service



100%
Employee Owned



Hardy Diagnostics
donates 1% of each
sale to charity.



FM 572526

Hardy Diagnostics has a Quality Management System that is certified to ISO 13485 and is a FDA licensed medical device manufacturer.

Headquarters

1430 West McCoy Lane
Santa Maria, CA 93455
800.266.2222
Sales@HardyDiagnostics.com
HardyDiagnostics.com

Distribution Centers

Santa Maria, California
Olympia, Washington
Salt Lake City, Utah
Phoenix, Arizona
Dallas, Texas
Springboro, Ohio
Lake City, Florida
Albany, New York
Raleigh, North Carolina