

PET FOOD

Microbiology



PET FOOD

Microbiology

Contents

- 1 Pathogen Detection
- 1 *E. coli* Media
- 2 *Listeria* spp. Media
- 3 *Salmonella* spp. Media
- 4 General Culture Media
- 5 Control Organisms
- 6 CompactDry™ Dry Media Plates
- 8 The Wizard™ CompactDry™ Plate Reader
- 9 Sample Preparation
- 10 Serial Dilution
- 14 Rapid Latex Agglutination Kits
- 14 Biochemical Tests
- 15 Rapid Tests
- 16 Environmental Monitoring
- 16 Surface Sampling
- 18 TRIO.BAS™ Air Samplers
- 20 ATP Testing
- 21 Lab Supplies



*We are here
for you,
like you are
for them.*

PATHOGEN DETECTION

Escherichia coli Media

CompactDry™ EC *E. coli* and Coliforms

For the isolation and enumeration of coliforms and *E. coli*. Coliform colonies will appear red, and *E. coli* colonies will appear blue.

240/pk 54082

CT-SMAC with Cefixime and Tellurite

(MacConkey with Sorbitol, Tellurite and Cefixime) For selection and differentiation of enterohemorrhagic *E. coli* O157.

15x100mm plate, 10/pk G129

EC Broth with MUG

For the detection of *E. coli* in food and water by fluorescence. Contains methylumbelliferyl glucuronide.

16x125mm tube, 20/pk K64

HardyCHROM™ ECC

A chromogenic media recommended for the detection, differentiation, and enumeration of *E. coli* and other coliforms in food, water, or environmental samples based on colony color.

15x100mm plate, 10/pk G303

HardyCHROM™ O157

A selective and differential medium recommended for the isolation of enterohemorrhagic *E. coli* O157 from food and environmental sources.

15x100mm plate, 10/pk G305

MacConkey Agar with Sorbitol (SMAC)

For the detection of enterohemorrhagic *E. coli* O157 (sorbitol negative).

15x100mm plate, 10/pk G36



Cat. no. 54082

MacConkey Broth, USP

Used for cultivating Gram-negative, lactose-fermenting bacilli and as a presumptive test for coliform organisms.

180ml bottle, 12/pk U125

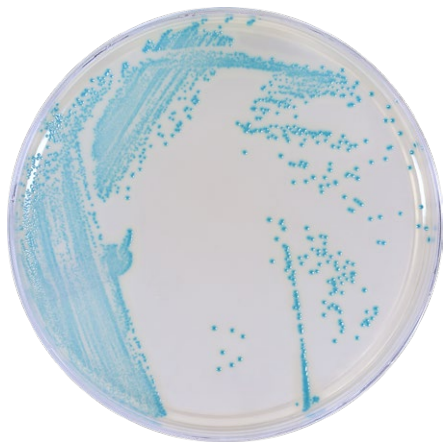
SHIBAM Agar

Used as a selective and differential growth medium for the cultivation of Shiga toxin producing *E. coli* (STEC).

15x100mm plate, 10/pk A146



Listeria spp. Media



Cat. no. G317

Buffered Listeria Enrichment Broth Base, BAM

For the isolation of *Listeria monocytogenes* from food samples.
500ml wide mouth jar, 12/pk U233

Buffered Listeria Enrichment Broth Selective Supplement

For use as a supplement for Buffered Listeria Enrichment Broth Base (BAM Formulation), Cat. no. U233.
15x103mm tube, 20/pk K183

CompactDry™ LS Listeria

For the selective growth, presumptive identification, and enumeration of *Listeria* spp. Growing colonies will appear blue.
100/pk LS100

Fraser Broth, Modified

For the selective enrichment of *Listeria* spp. in foods and environmental samples.

16x125mm tube, 20/pk K98

500ml bottle, 10/pk U410

HardyCHROM™ Listeria

For the selective isolation, differentiation, and enumeration of *Listeria monocytogenes* from food and environmental samples by colony color and appearance.

15x100mm plate, 10/pk G317

Motility Test Medium

For the detection of motility in Gram-negative enteric bacilli.

16x100mm tube, 20/pk Q10

With TTC 16x100mm tube, 20/pk Q11

Oxford Medium

For the selective isolation and differentiation of *Listeria monocytogenes*.

15x100mm plate, 10/pk G46



Salmonella spp. Media

CompactDry™ SL Salmonella

For the presumptive identification of *Salmonella* spp. Growing colonies will appear green or blue-green with black centers.

240/pk 54085

HardyCHROM™ Salmonella

A differential medium that facilitates the isolation and differentiation of *Salmonella* spp. from other members of the family Enterobacteriales.

15x100mm plate, 10/pk G309

HE (Hektoen Enteric) Agar

For the selective isolation and differentiation of pathogenic Gram-negative enteric bacteria, such as the non-lactose fermenting *Salmonella* spp. and *Shigella* spp.

15x100mm plate, 10/pk G63

Iodine-Iodide Solution, for Tetrathionate Broth

Iodine-Iodide Solution to be added to Tetrathionate Broth, Cat. no. K65.

2 oz bottle, each Z129

Lactose Broth

For the cultivation of coliforms and *Salmonella* spp. in water, food, and dairy.

12 oz wide mouth jar, 12/pk U146

Lysine Iron Agar (LIA)

For the identification of Gram-negative enteric pathogens.

16x125mm tube, 20/pk L25

MR-VP Broth

For the identification of Gram-negative bacilli.

15x103mm tube, 20/pk K37

Rappaport-Vassiliadis Broth, USP

For the selective enrichment of *Salmonella* spp. from food samples.

16x125mm tube, 20/pk K246

Selenite Cystine Broth

For the selective enrichment of *Salmonella* spp.

15ml dropper vial, 20/pk K69

Tetrathionate Broth Base

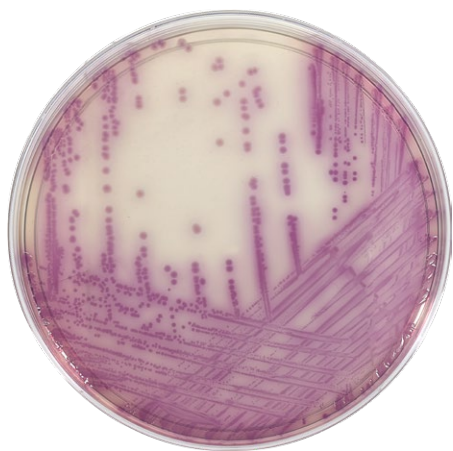
For selective enrichment of *Salmonella* spp. Use with iodine-iodide solution, Cat. no. Z129.

16x125mm tube, 20/pk K65

XLD (Xylose Lysine Deoxycholate) Agar, USP

For use as a selective and differential medium for the isolation of Gram-negative enteric pathogens.

15x100mm plate, 10/pk G65



Cat. no. G309

General Culture Media

BHI Broth

For the cultivation of microorganisms.
16x125mm tube, 20/pk K25

Blood Agar Plate, 5% Sheep Blood in Tryptic Soy Agar (TSA) Base

For use as general purpose growth media for the isolation, cultivation, and differentiation of a wide variety of microorganisms.
15x100mm plate, 10/pk A10

Brilliant Green Bile Broth

For the detection of coliforms in water and food. Contains a durham tube for gas detection.
16x125mm tube, 20/pk K66

Egg Yolk Agar, Modified

For the isolation, cultivation, and differentiation of *Clostridium* spp. and other anaerobic bacteria.
15x100mm plate, 10/pk G215

EMB Levine Agar (Eosin Methylene Blue)

For isolation and differentiation of Gram-negative bacilli.
15x100mm, 10/pk G25

Lauryl Tryptose Broth (Lauryl Sulfate Broth)

For the detection of coliforms in water and food. Double strength. Contains a durham tube for gas detection.
20x125mm tube, 20/pk K32

m Endo LES Agar

For the enumeration of coliforms from water specimens by membrane filter technique.
15x100mm plate, 10/pk G28

MacConkey Agar, USP

For the isolation and differentiation of Gram-negative bacteria.
15x100mm plate, 10/pk G35

Reinforced Clostridial Medium, USP

For the cultivation and enumeration of *Clostridia* spp. and other anaerobic and facultative bacteria.
4 oz bottle, 20/pk U172

SabDex (Sabouraud Dextrose) Agar, USP

Recommended for the isolation, cultivation, and maintenance of non-pathogenic and pathogenic species of fungi and yeasts.
15x100mm, 10/pk W70

Standard Methods Agar

For the cultivation and enumeration of microorganisms in dairy products, food, and water.
15x100mm plate, 10/pk G43
20x125mm tube, 20/pk Q21

Tryptic Soy Agar (TSA), USP

For use as a non-selective, general growth medium for the isolation and cultivation of microorganisms (bacteria, yeast, and fungi).
15x100mm plate, 10/pk G60
20x125mm tube, 20/pk Q58

Violet Red Bile Agar (VRBA) with MUG

For the detection of coliforms in food or dairy products.
15x100mm plate, 10/pk J132





STEC/EHEC Big 6

Organisms (listed in KWIK-STIK™ format)	2 Pack
<i>Escherichia coli</i> , serotype O103:H11, CDC06-3008 (STEC)	O1101P
<i>Escherichia coli</i> , serotype O111:H8, CDC2010C-3114 (STEC)	O1102P
<i>Escherichia coli</i> , serotype O121:H19, CDC02-3211 (STEC)	O1099P
<i>Escherichia coli</i> , serotype O145:NM, CDC99-3311 (STEC)	O1097P
<i>Escherichia coli</i> , serotype O26:H11, CDC 03-3014 (STEC)	O1100P
<i>Escherichia coli</i> , serotype O45:H2, CDC00-3039 (STEC)	O1098P

E. coli O157

Organisms (listed in KWIK-STIK™ format)	2 Pack
<i>Escherichia coli</i> (O157:H7), ATCC® 35150™	O617P

E. coli non-STEC/EHEC

Organisms (listed in KWIK-STIK™ format)	2 Pack
<i>Escherichia coli</i> , ATCC® 25922™	O335P

Yeast and Mold

Organisms (listed in KWIK-STIK™ format)	2 Pack
<i>Candida albicans</i> , ATCC® 10231	O443P
<i>Aspergillus brasiliensis</i> , ATCC® 16404™	O392P

Listeria monocytogenes

Organisms (listed in KWIK-STIK™ format)	2 Pack
<i>Listeria monocytogenes</i> , ATCC® 15313™	O727P

Salmonella enterica

Organisms (listed in KWIK-STIK™ format)	2 Pack
<i>Salmonella enterica</i> , ATCC® 14028™	O363P

Simple and Effective System for Colony Counting

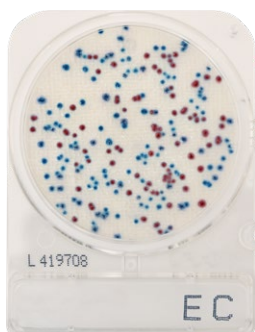
The CompactDry™ plate line presents a variety of organism-specific or total count tests, packaged nicely in a sophisticated and sturdy cassette. Designed to save technician time while performing colony counts on Food, Beverage, Cannabis, Cosmetics, Environmental, Meat, and Raw Material samples.

CompactDry™ ETB *Enterobacteriaceae*

For the isolation and enumeration of *Enterobacteriaceae* that will appear magenta in color. Genera of *Enterobacteriaceae* consists of: *Citrobacter*, *Enterobacter*, *Escherichia*, *Klebsiella*, *Morganella*, *Proteus*, *Salmonella*, *Serratia*, *Shigella*, *Yersinia* and more.

100/pk

ETB100



CompactDry™ EC *E. coli* and Coliforms

For the isolation and enumeration of coliforms and *E. coli*. Coliform colonies will appear red, and *E. coli* colonies will appear blue.

240/pk

54082

CompactDry™ TC Total Count

For total aerobic viable bacterial count. Growing colonies will appear red.

240/pk

54081



CompactDry™ SL *Salmonella*

For the presumptive identification of *Salmonella* spp. Growing colonies will appear green or blue-green with black centers.

240/pk

54085

CompactDry™ LS
Listeria

For the selective growth, presumptive identification, and enumeration of *Listeria* spp. Growing colonies will appear blue.

100/pk LS100



CompactDry™ XSA
Staphylococcus aureus

For the selective growth, enumeration, and differentiation of *Staphylococcus aureus*. Growing colonies will appear blue green.

240/pk 54086



CompactDry™ YM
Yeast and Mold

For the isolation and enumeration of yeast and mold. Yeast colonies will appear blue, and molds will form cottony colonies with characteristic colors. (5-7 days)

240/pk 54083



CompactDry™ YMR
Yeast and Mold Rapid

For the isolation and enumeration of yeast and mold. Yeast colonies will appear blue, and molds will form cottony colonies with characteristic colors. (48-72 hrs)

240/pk 54084



Plate Reading

The Wizard[™]

CompactDry[™] Reader

The Wizard CompactDry[™] Reader, a small instrument that will make a big impact on reducing the time spent counting colonies by hand.

Easy-to-use: Flip the switch, select your configuration, insert your CompactDry[™] plate(s), select read, and save your results!



Your choice of data retrieval:

- Printout
- Thumb Drive
- LIMS Connection

Cat. no. CDR2



Automate your colony counts and **expand** your throughput capabilities.

Sample Preparation



MiniMix 100 W CC

The MiniMix 100 W CC is made for the blending of small samples. The patented adjustable blending power enables optimal bacterial extraction, and can be adapted to the nature of the sample.

Each

100WCC

BagPage® Blender Bags with Filter

Blender bags with a full surface micro-perforated filter. Flora is extracted from the sample and goes through the filter during blending.

Sterile packs of 25, 100ml, 180x95mm, 500/bx

121025



BagFilter® 400P Bags for Lab Blender

BagFilter® is a blender bag equipped with a lateral filter, perfect for microbiological analyses of fibrous samples. Flora is extracted from the sample and goes through the filter during blending. You can then pipet behind the filter with no residue or particles from the sample.

Sterile packs of 25, 100ml, 180x300mm, 500/bx

111425

Serial Dilution

Diligent Shaker for use with Dilucup® Elegance!

by LabRobot

The Diligent Shaker uses orbital rotation to make sure each dilution is thoroughly vortexed. It is activated by either an hands-free optical sensor or the optional foot pedal. The 42 LED indicators light each cup, letting you easily see what dilution well you are in.

Easy as 1, 2, 3!

- 1** Simply add 1ml sample to the first Dilucup™.
- 2** Start the shaker by waving your hand in front of the motion sensor. When the Dilushaker™ stops, the next dilution is ready.
- 3** Collect 1ml from the first cup and release it into the second cup and start the shaker again. Continue this until the final dilution is reached.



Features:

- Dimensions: 38cm x 29.5cm x 5cm
- 7” touch screen
- Two optical sensors, one at each side
- Can create and store testing templates, assuring standardization of method
- Programming with intuitive software
- 6 rows for 42 cups (7 x 6)
- Removable magnetic tray for 42 cups
- Export data to USB
- Bar code reading (Dilugent and Diligent Pro only)
- Able to record sample ID and user ID (Dilugent and Diligent Pro only)
- Full connectivity to LIMS (Dilugent Pro only)
- Optional Footswitch, Cat. no. 40FS02

Diligent Shaker Light	Cat. no.
-----------------------	----------

Store up to 2 templates. Data retrieval is manual only.	40DGT84LT
---	-----------

Diligent Shaker Standard Version	Cat. no.
----------------------------------	----------

Record sample ID, technical or user ID. Bar code scanner capability. Store up to 10 templates. Export data to USB.	40DGT84SD
--	-----------

Diligent Shaker Pro	Cat. no.
---------------------	----------

LIMS connectivity and traceability for data. Record sample ID, technical or user ID. Bar code scanner capability. Store up to 10 templates.	40DGT84PO
---	-----------

Serial Diluents

Product	Specifications	Cat. no.
Buffered Peptone Water	9ml fill, 3 rows, 21 cups	40DEBPW3
Butterfield’s Phosphate Buffer	9ml fill, 3 rows, 21 cups	40DEBFD6



Dilu-Lok™ Dilution Buffers



Our pre-filled Dilu-Lok™ dilution vial is designed especially for the food, dairy, and water industries. Each lot is meticulously tested for pH, sterility, and fill volume. Designed and packaged to eliminate leaking.



Heavy Duty

Vials are made of sturdy polypropylene with a leak-proof seal that holds up even during air transport.

Large Opening

A wide 45mm opening accommodates most sample sizes. Each vial is clearly marked with a 90ml and 99ml fill line.

One-Handed

Flip-top lid allows for easy one-handed opening and closing to make pipeting easier. Saves unnecessary motion! No awkward screw caps or plastic strips to tear off.

Variety

Available with peptone water, buffered peptone water, butterfield's buffer, deionized water, phosphate buffer with MgCl, and as an empty sterile container (Cat. no. 3538).

Leak-Proof

Re-engineered for an improved seal. Easy-to-remove, perforated, shrink wrap ensures product integrity.

Product	Specifications	Cat. no.
Butterfield's Phosphate Buffer	90ml fill, 50/pk	D590
	99ml fill, 50/pk	D599
Phosphate Buffer with MgCl	90ml fill, 50/pk	D690
	99ml fill, 50/pk	D699
Deionized Water	90ml fill, 50/pk	D090
	99ml fill, 50/pk	D099
Buffered Peptone Water	90ml fill, 50/pk	D080
Empty Vial	145ml fill 250/case	3538

(For sample collection, transport and storage)

Other Dilution Buffers

Product	Specifications	Cat. no.
Deionized Water	16x125mm tube, 20/pk 125ml bottle, 12/pk	K259 U85
Butterfield's Phosphate Buffer	500ml bottle, 10/pk	U123
Phosphate Buffered Saline	1L bottle, 10/pk	U138
Buffered Peptone Water	500ml bottle, 10/pk	U142
Peptone Water, 0.1%	500ml bottle, 10/pk	U201



Liquid Handling

Product	Specifications	Cat. no.
Picus® electronic pipette	1 channel 0.5-10ml, each	735111
Tacta mechanical pipette	1 channel , 1ul-10ml, each	LH729090



Cat. no. 735111

Rapid Latex Agglutination Kits

Microgen® Salmonella Latex Test

A rapid alternative to the traditional identification methods and detects *Salmonella* spp. including *Salmonella typhimorium* and *S. enteritidis*. Additionally, it employs highly specific flagella antisera which reduces potential cross-reactivity with non *Salmonella*.
50/pk

F42

Microgen® Legionella Latex Test

Rapid latex agglutination test providing results in two minutes directly from a selective medium for the confirmatory identification of *Legionella pneumophila* Serogroup 1 and Serogroup 2-15. Non-*L. pneumophila* species grown on selective media.
50/pk

M45



Cat. no. M45

Biochemical Tests

Microgen® GN-ID A

Microgen® GN-ID A is a convenient 12 substrate ID system for the most commonly isolated Enterobacteriaceae from food samples. Obtain a reliable identification, based on its standardized biochemical substrates, easiness of use and interpretation system in 24 hours.
60/tests

MID64CE

Microgen® Listeria-ID

Identification of *Listeria* in foods and environmental samples including built-in micro-haemolysis reaction for optimised differentiation of haemolytic and nonhaemolytic *Listeria* spp. This eliminates the need of further testing.
24/tests

MID67

Microgen® GN-ID B

The GN-ID B microwell test strips are intended to be used together with the GN-ID A kit to produce a 24 substrate system to identify non-fastidious Gram-negative bacilli (oxidase negative and positive) in addition to all currently recognised species of the family Enterobacteriaceae.
24/tests

MID65



Rapid Tests

Indole, Kovac's Reagent

Recommended for use in determining the indole reaction of bacteria.

15ml dropper vial, each Z67

Moellers Lysine Decarboxylase

For the differentiation of Gram-negative enteric bacilli based on the decarboxylation reaction of amino acids.

16x125mm tube, 20/pk Y43

Nitrate Reagent A, Sulfanilic Acid

For use in determining the nitrate reduction reaction of bacteria, other than *Mycobacterium* species.

15ml dropper vial, each Z71

Nitrate Reagent B, Naphthylamine

For use in determining the nitrate reduction reaction of bacteria, other than *Mycobacterium* species.

15ml dropper vial, each Z72

Nitrate Reagent C, Zinc Dust

For the completion of the nitrate reduction test.

5gm, each Z73

ONPG Disks

Used to differentiate members of the Enterobacterales and other microorganisms based on beta-galactosidase activity.

50 disks/cartridge Z7321

OxiSticks™ Oxidase Swabs

For use in the detection of cytochrome oxidase activity in bacteria.

25 swabs per vial, each Z193

OxiStrips™, Oxidase Test

Are used for the detection of cytochrome oxidase activity in bacteria.

25 paper strips/pk Z93

Potassium Hydroxide Solution, 3%

For use in slide preparations of specimens for the purpose of aiding in identification of Gram-negative bacilli.

15ml dropper vial, each Z173

Rapid Urea Medium

For the rapid determination of urease activity in Enterobacterales.

13x100mm tube, 20/pk R154

Simmons Citrate Agar

For the detection of citrate utilization of Gram-negative enteric bacilli.

16x100mm tube, 20/pk L80

Triple Sugar Iron (TSI) Agar

For the identification of Gram-negative bacilli.

16x125mm tube, 20/pk L50

Voges-Proskauer Reagent A

For use in determining the Voges-Proskauer (VP) reaction of bacteria.

15ml dropper vial, each Z91

Voges-Proskauer Reagent B

For use in determining the Voges-Proskauer (VP) reaction of bacteria.

15ml dropper vial, each Z92



Cat. no. Z92

ENVIRONMENTAL MONITORING

Surface Sampling

LOKTM TIGHT CONTACT PLATES



1. Twist and remove lid.



2. Gently press plate to surface without twisting or sliding.



3. Twist clockwise until frosted bands line up and lock lids into place.

Tryptic Soy Agar (TSA) with Lecithin and Tween® 80, USP

For use as a general growth medium.

15x65mm Plate, 10/pk P34

SabDex Agar (Sabouraud Dextrose Agar) with Lecithin and Tween® 80

For the cultivation of yeasts and fungi from environmental samples.

15x65mm Plate, 10/pk P46

D/E Neutralizing Agar

For the broad spectrum neutralization of surface disinfectants and the cultivation of microorganisms from environmental surfaces.

15x65mm Plate, 10/pk P99



EnviroTrans™

ENVIRONMENTAL SWAB RINSE KIT

This ready-to-use swab and tube is pre-filled with your choice of sampling diluents. Simply remove the cap, collect your sample by swabbing the surface, recap, and send to the lab. The solution can then be inoculated onto a CompactDry™ plate. Excellent for detection or enumeration of microorganisms from environmental surfaces and hard to reach areas.

Neutralizing Buffer

2ml, 20/box SRK20

5ml, 20/box SRK15

Letheen Broth

5ml, 20/box SRK25

Saline 0.85%

2ml, 20/box SRK30

D/E (Dey-Engley) Neutralizing Broth

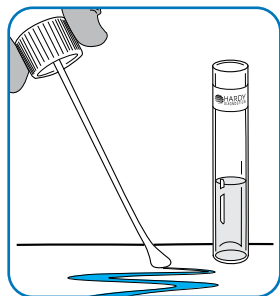
5ml, 20/box SRK45

Neutralizing Saline

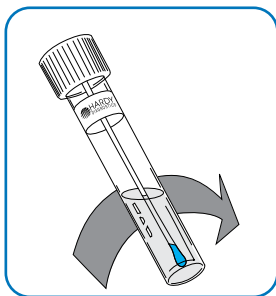
5ml, 20/box SRK55

Butterfield's Phosphate Buffer

1ml, 20/box SRK90



1. Collect sample



2. Safely transport to the lab



3. Cultivate specimen

Air Sampling



TRIO.BAS™
BIOLOGICAL AIR SAMPLER
MONO



Each kit includes:

TRIO.BAS™ MONO air sampler, induction battery charger and cable, aspirating head, cover head, ROBUSTUS carrying case, calibration certificate, and IQ, OQ, PQ fillable documents.

Features:

- Delayed interval sampling and remote start capabilities
- Data transfer capability via Bluetooth. Requires purchase of BAS296 software
- Aspirating head with quick bayonet closure system for easy manipulation
- Light weight: lighter than industry counterparts
- Charges via induction base charger. No plugs or external connections

Data transfer to PC capability

Cat. no.

MONO Kit, 100 liters/min., contact plate	BAS200K
MONO Kit, 100 liters/min., mono plate	BAS201K
MONO Kit, 200 liters/min., contact plate	BAS205K
MONO Kit, 200 liters/min., mono plate	BAS206K

TRIO.BAS™ MINI for CompactDry™



CompactDry™ plates are ready-to-use plates for detection of microorganisms in raw materials, finished products, and environmental surfaces. They can be used to detect microbial air contamination in combination with the TRIO.BAS™ MINI air sampler.

Each kit includes:

- TRIO.BAS™ MINI air sampler
 - Charging cable
- Stainless steel aspirating head
 - Protective cover head
 - Carrying case

CompactDry™ plates sold separately

Cat. no.

TRIO.BAS™ MINI CompactDry™ Kit, 100 liters/minute

BAS255K



TRIO.BAS™
BIOLOGICAL AIR SAMPLER
DUO



Each kit includes:

TRIO.BAS™ DUO air sampler, induction battery charger and cable, aspirating heads, cover heads, ROBUSTUS carrying case, calibration certificate, and IQ, OQ, PQ fillable documents.

Features:

- Two aspirating heads for sampling on separate plates to determine bacterial and yeast/mold counts
 - Programmable for simultaneous or interval aspirating times
 - Delayed interval sampling and remote start capabilities
- Data transfer capability via Bluetooth. Requires purchase of BAS296 software
 - Aspirating head with quick bayonet closure system for easy manipulation
 - Charges via induction base charger. No plugs or external connections

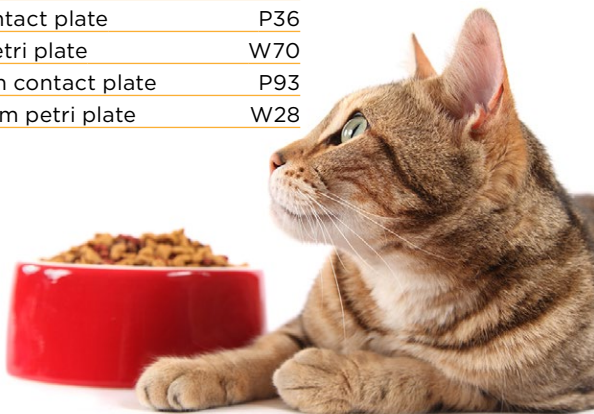
Cat. no.

DUO Kit, 100 liters/min., contact plate	BAS220K
DUO Kit, 100 liters/min., mono plate	BAS221K
DUO Kit, 200 liters/min., contact plate	BAS225K
DUO Kit, 200 liters/min., mono plate	BAS226K

Culture Media for TRIO.BAS™

Cat. no.

Tryptic Soy Agar 15x65mm contact plate	P34
Tryptic Soy Agar 15x100mm petri plate	W64
SabDex Agar 15x65mm contact plate	P36
SabDex Agar 15x100mm petri plate	W70
Malt Extract Agar 15x65mm contact plate	P93
Malt Extract Agar 15x100mm petri plate	W28



ATP Testing

PhosReader ATP Luminometer

The PhosReader ATP Luminometer is a device that rapidly and accurately measures adenosine triphosphate (ATP) levels from surface and water samples. With results available in seconds, this tool is commonly used for routine hygiene verification testing in places like kitchens and production spaces to ensure that surfaces are properly cleaned.

Benefits:

- Small and portable, which enables users to obtain results on site without any special equipment
 - Low power consumption- 10 hours battery life and up to 600 hours standby time
 - Quick 10-second result
 - Intelligent software- data can be uploaded to the dedicated PC software after the test
 - Built-in inclinometer that stops the test in case the incline angle is out of range
 - Bluetooth connectivity available (Bluetooth printer pairing)
 - Compatible with ATP-Flow Surface Test and ATP-Flow Total Water Test
- Each PHR1020

ATP-Flow

ProGnosis Biotech's advanced ATP surface and water testing series, known as **ATP-Flow**, provides an effective solution for hygiene monitoring and cleanliness verification.

ATP is a molecule used as an indicator to measure the presence of organic materials to assess cleanliness.

ATP-Flow swabs are designed for ATP surface testing, and ATP-Flow Total is designed to detect the presence of ATP in water samples.



Cat. no.

SW1020

ATP-Flow (Surface ATP Test)

SW1120

ATP-Flow Total (Water ATP Test)

Hardy Diagnostics

DuraRack®



Lab Supplies

DuraRack™ Petri Plate Holder

For batching, safe transporting and incubating 100mm culture plates and helps streamline benchtop laboratory processing in your microbiology lab.

- Durable
- Autoclavable
- Coated steel wire rack
- Easy loading and unloading from the top

Sturdy welded design

60 Petri plate holder, each DURA60

84 Petri plate holder, each DURA84

ComfortPRO™ Lab Coat

These affordable, disposable lab coats are made of tri-laminated, spunbound material (SMS) which is designed to be fully breathable and splash resistant.

- Knit cuffs and collars for added comfort
- Three pockets are featured, one on the chest and two at the hip, with snap front buttons

Medium, 20/case NEGU6073M

Large, 20/case NEGU6073L

XLarge, 20/case NEGU6073XL



Adenna MIRACLE® Gloves

It is 100% rubber latex free eliminating potential risk of rubber latex sensitivities.

- Saves you shelf space, packaging material, money, and time
- "Skin-like" fit and feel for superb tactile sensitivity
- Light weight, soft, very flexible and 100% rubber latex free

Small, 2,000/case MIR162

Medium, 2,000/case MIR165

Large, 2,000/case MIR166

Hardy Diagnostics donates 1% of its earnings to non-profit organizations every year as part of our mission to improve lives around the world.

Our Community Action Committee is made up of Hardy employees that donate their time and resources in ways that strengthen and support the communities we live in. During visits to the Santa Maria Valley Humane Society, our employee volunteers give love and attention to the shelter animals as well as food, toys, and blankets.



FM 572526

Hardy Diagnostics has a Quality Management System that is certified to ISO 13485 and is a FDA licensed medical device manufacturer.

Headquarters

1430 West McCoy Lane
Santa Maria, CA 93455
800.266.2222
Sales@HardyDiagnostics.com
HardyDiagnostics.com

Distribution Centers

Santa Maria, California
Olympia, Washington
Salt Lake City, Utah
Phoenix, Arizona
Dallas, Texas
Des Moines, Iowa
Springboro, Ohio
Lake City, Florida
Albany, New York
Raleigh, North Carolina

PET FOOD

Microbiology