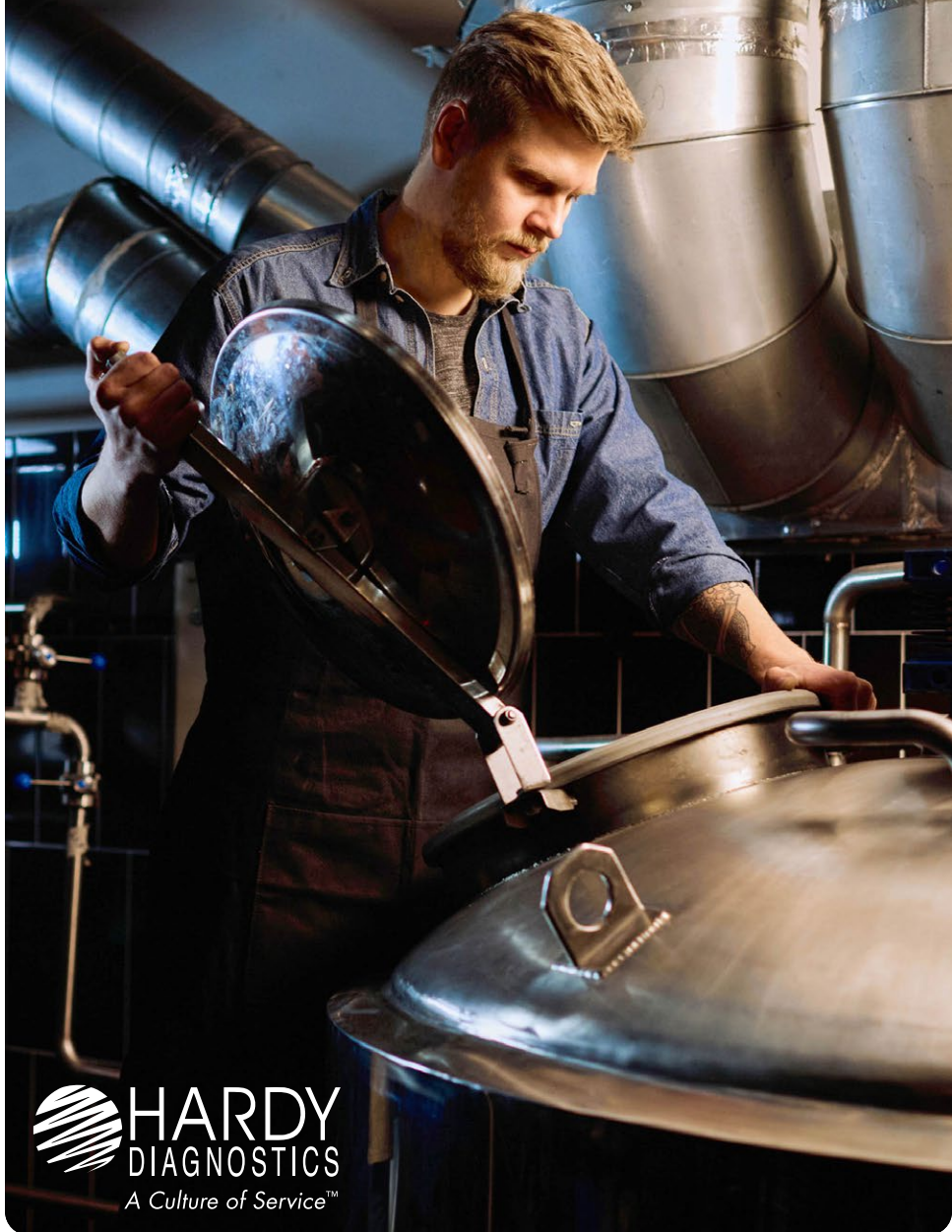


WINERY and BREWERY

Microbiology



WINERY and BREWERY

Microbiology

Contents

- 1 Prepared Culture Media**
- 2 Dehydrated Culture Media**
- 3 Dry Sample-Ready Plates**
- 7 Surface Sampling**
- 8 Membrane Filtration**
- 9 Dilution Vial**
- 9 Quality Control Organisms**
- 10 Hygiene Verification**
- 11 Sample Collection**
- 12 Serial Dilutions**
- 13 Mass Spectrometry**

Prepared Culture Media

Product	Specifications	Cat. no.
Barney Miller Medium	15x60mm plate, 10/pk	G93
Butterfield's Phosphate Buffer	16x125mm tube, 9ml fill, 20/pk	K109
Lactobacilli MRS Agar	15x60mm plate, 10/pk 15x100mm plate, 10/pk	G197 G117
Lactobacilli MRS Broth	16x125mm tube, 9ml fill, 20/pk	K15
m Endo LES Agar	15x60mm plate, 10/pk 15x100mm plate, 10/pk	G128 G28
m-PA Agar	15x60mm plate, 10/pk	G133
Malt Extract Agar w/0.01% Chloramphenicol	15x100mm plate, 10/pk	W80
Orange Serum Agar	15x60mm plate, 10/pk 15x100mm plate, 10/pk	G91 G181
Potato Dextrose Agar, USP	15x100mm plate, 10/pk	W60
Potato Dextrose Agar with TA (Tartaric Acid)	15x100mm plate, 10/pk	W96
Potato Dextrose Agar with TA (Tartaric Acid)	15x60mm plate, 10/pk	G94
Pseudomonas Isolation Agar	15x60mm plate, 10/pk	G145
R2A Agar	15x60mm plate, 10/pk	G03
Sabdex Agar with Gentamicin and Chloramphenicol	15x60mm plate, 10/pk	G159
Saline, 0.85%	125ml bottle, 100ml fill - 12/pk	U155
Standard Methods Agar	15x100mm plate, 10/pk 473ml glass bottle, 12/pk	G43 U395
Tryptic Soy Agar	15x60mm plate, 10/pk	G151
Universal Beer Agar w/ Cyclohexamide	15x60mm plate, 10/pk	G182



Dehydrated Culture Media

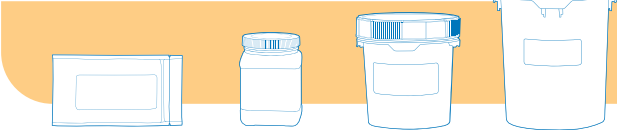


CRITERION

DEHYDRATED CULTURE MEDIA



Hardy Diagnostics' dehydrated culture media, CRITERION™, is formulated to meet or exceed the highest quality standards. Choose from 250 standard formulas or request custom blending to your specifications. Innovative packaging designs and overall reliability make CRITERION™ the logical choice for culture media in your laboratory.



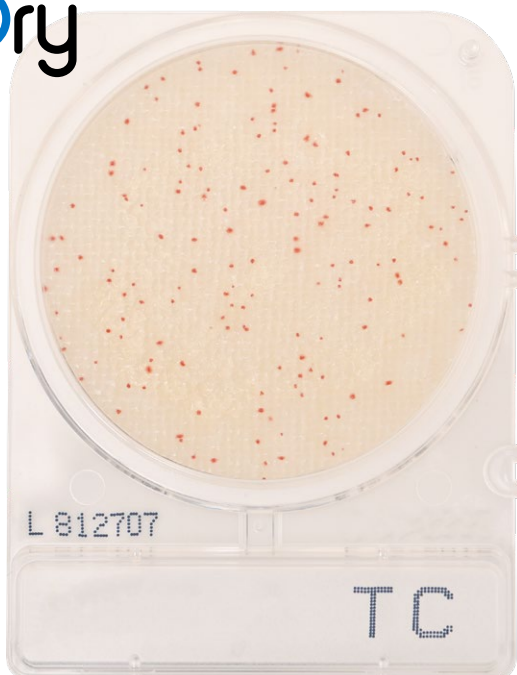
Product	2L Mylar Zip-Bag	500gm Bottle	2kg Bucket	10kg Bucket
Barney Miller Broth with Indicator	C8990	C8991	C8992	C8993
Lactobacilli MRS Broth	C5930	C5931	C5932	C5933
Pharmaceutical Grade Agar	C7430	C7431	C7432	C7433
Tryptic Soy Agar (TSA)	C7120	C7121	C7122	C7123
WL Nutrient Medium	C7300	C7301	C7302	C7303
WL Differential Medium	C7290	C7291	C7292	C7293
Universal Beer Agar (UBA)	C9250	C9251	C9252	C9253

Dry Sample-Ready Plates

CompactDry™

The CompactDry™ plate line presents a variety of organism-specific or total count tests, packaged nicely in a sophisticated and sturdy cassette.

The benefits are easy to spot.



AOAC Approved

BC, ETB, EC, TC, TCR,
YM, YMR, XSA

MicroVal Approved

BC, EC, ETB, SL, TC,
YM, YMR, XSA

NordVal Approved

EC, ETB, TC, YM, YMR,
XSA



MICROVAL®





CompactDry™ TC

Total Count

For the determination of total aerobic bacterial counts in raw materials, finished products, or on environmental surfaces pertaining to food and related industries.

240/pk 54081



CompactDry™ TCR

Total Count Rapid

For the determination of total aerobic bacterial counts in raw materials, finished products, or on environmental surfaces pertaining to food and related industries.

240/pk 54088

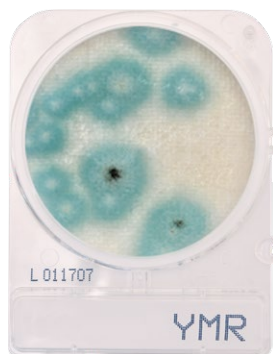


CompactDry™ X-SA

Staphylococcus aureus

For the isolation and enumeration of *Staphylococcus aureus* in raw materials, finished products, or on environmental surfaces pertaining to food and related industries.

240/pk 54086



CompactDry™ YMR

Yeast and Mold Rapid

For enumeration of yeast and mold growth in raw materials, finished products, or on environmental surfaces pertaining to food, cannabis, and other related industries.

240/pk 54084



CompactDry™ EC

E. coli and Coliforms

For the isolation and enumeration of coliforms and *E. coli* in raw materials, finished products, or on environmental surfaces pertaining to food and related industries.

240/pk 54082



CompactDry™ YM

Yeast and Mold

For the isolation and enumeration of yeast and mold in raw materials, finished products, or on environmental surfaces pertaining to food and related industries.

240/pk 54083



CompactDry™

ETB

Enterobacteriaceae

For the isolation and enumeration of organisms belonging to the family *Enterobacteriaceae* in raw materials, finished products, or on environmental surfaces pertaining to food and related industries.

100/pk

ETB100

CompactDry™

CF

Coliforms

For the isolation and enumeration of coliforms in raw materials, finished products, or on environmental surfaces pertaining to food and related industries.

240/pk

54053

CompactDry™

PA

Pseudomonas aeruginosa

For the enumeration of *Pseudomonas aeruginosa* in food samples, feedstuffs, water, cosmetics, and beverages, or material samples from related industries.

100/pk

PA100



CompactDry™

SL

Salmonella

For the isolation and differentiation of *Salmonella* in raw materials, finished products, or on environmental surfaces pertaining to food and related industries

240/pk

54085

CompactDry™

LS

Listeria

For the isolation and enumeration of *Listeria* spp. in raw materials, finished products, or on environmental surfaces pertaining to food and related industries.

100/pk

LS100

CompactDry™

BC

Bacillus cereus

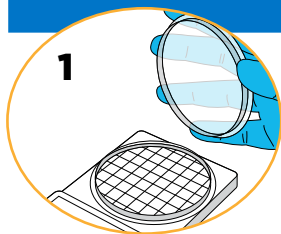
For the presumptive detection of *Bacillus cereus* in raw materials, finished products, or on environmental surfaces pertaining to food and other related industries.

100/pk

XBC100

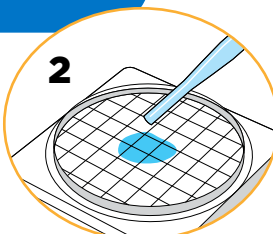
How to Use CompactDry™

1



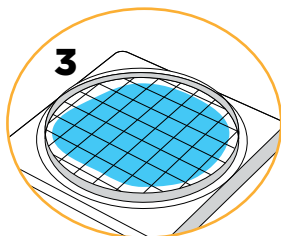
Remove the protective lid from the CompactDry™ plate.

2



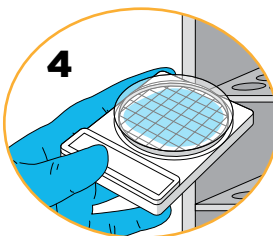
Pipette 1ml of sample (dilute if necessary) in the middle of dry media.

3



Sample diffuses automatically, transforming the dry medium to a gel.

4



Re-cap and incubate for the prescribed time. Count the number of colonies manually or on the Wizard™ CompactDry™ Reader.

The Wizard™ CompactDry™ Reader



The Wizard™ CompactDry™ Reader, a small instrument that will make a big impact on reducing the time spent counting colonies by hand.

Cat. no. CDR2

Easy-to-use: Flip the switch, select your configuration, insert your CompactDry™ plate(s), select read, and save your results! See how fast that was?

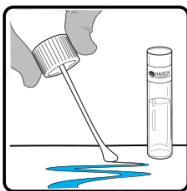
The **Wizard**
CompactDry™ Reader



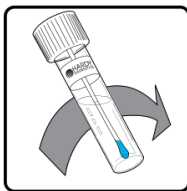
A ready-to-use swab and tube pre-filled with your choice of solution to fit your specific needs!



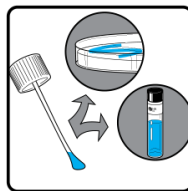
Collect and transport environmental samples with efficiency and ease. Simply remove the cap and attached Dacron® swab, collect the sample, recap, and send to the lab. Excellent for detection or enumeration of microorganisms from environmental surfaces or equipment.



1. Collect Sample



2. Safely transport to the lab



3. Cultivate specimen

EnviroTrans™ Product	Specifications	Cat. no.
EnviroTrans™, Neutralizing Buffer	5ml, 20/bx	SRK15
EnviroTrans™ NaCl w/Sodium Thiosulfate	5ml, 20/bx	SRK95
EnviroTrans™ Saline, 0.85%	5ml, 20/bx	SRK35
EnviroTrans™ Barney Miller Broth	5ml, 20/bx	SRK100



Membrane Filtration

Microsart® Filtering Station Manifolds

by Sartorius

Manifold Description	Funnel Capacity	Cat. no.
1-Branch	1 x 100ml	168M1MS
2-Branch	2 x 100ml	168M2MS
3-Branch	3 x 100ml	168M3MS
6-Branch	6 x 100ml	168M6MS



Membrane filtration is the established method of choice for liquid testing as it provides reliable and reproducible results. Microsart® Manifolds adapt to your individual microbiological testing procedures. 1, 2, 3, and 6 branch manifolds available.

- Autoclavable, 100% stainless steel with no disassembly required
- Sterile venting in critical applications reduced risk of secondary contamination
- Stable ergonomic design

Microsart® @ Filters

100ml Volume

Pore Size	Filter Color/Grid	Size	Cat. no.
0.2µm	White/Black	24	16D011007TG
0.2µm	White/Black	27	16D011007ACG
0.2µm	White/Black	60	16D011007BL
0.45µm High-Flow	White/Black	24	16D0110H6TG
0.45µm High-Flow	White/Black	27	16D0110H6ACG
0.45µm High-Flow	White/Black	60	16D0110H6BL
0.45µm High-Flow	Black/White	27	16D0310H6ACG
0.45µm High-Flow	Gray/White	60	16D0310H6BL

250ml Volume

Pore Size	Filter Color/Grid	Size	Cat. no.
0.2µm	White/Black	48	16D012507BK
0.45µm High-Flow	Gray/White	18	16D0325H6ACF
0.45µm High-Flow	Gray/White	48	16D0325H6BK
0.45µm High-Flow	White/Black	18	16D0125H6ACF
0.45µm High-Flow	White/Black	48	16D0125H6BK
0.65µm	Gray/White	48	16D032505BK





Our pre-filled Dilu-lok™ dilution vial is designed especially for the food, dairy, and water industries. Each lot is meticulously tested for pH, microbial load, and fill volume. Designed and packaged to eliminate leaking.

Dilution Vials



Product	Specifications	Cat. no.
Butterfield's Phosphate Buffer	90ml fill, 50/pk 99ml fill, 50/pk	D590 D599
Phosphate Buffer with MgCl	90ml fill, 50/pk 99ml fill, 50/pk	D690 D699
Deionized Water	90ml fill, 50/pk 99ml fill, 50/pk	D090 D099
Buffered Peptone Water	90ml fill, 50/pk	D080
Empty Flip-Lok™ Vial (For Sampling)	250/pk	3538



Quality Control Organisms



Organisms (listed in KWIK-STIK™ format)	6 Pack	2 Pack
<i>Lactacaseibacillus paracasei</i> , ATCC® 334™	0546K	0546P
<i>Lactobacillus acidophilus</i> , ATCC® 314™	0885K	0885P
<i>Pediococcus acidilactici</i> , ATCC® 8042™	0259K	0259P
<i>Lactacaseibacillus casei</i> ATCC® 393™	0176K	0176P
<i>Lactobacillus fermentum</i> , ATCC® 9338™	0813K	0813P
<i>Acetobacter aceti</i> , ATCC® 15973™	0511K	0511P
<i>Bacillus cereus</i> , ATCC® 10876™	0998K	0998P
<i>Lactiplantibacillus plantarum</i> , ATCC® 8014™	0234K	0234P
<i>Zygosaccharomyces parabailii</i> , ATCC® MYA-4549™	01011K	01011P

Hygiene Verification

PhosReader ATP Luminometer

The PhosReader ATP Luminometer is a device that rapidly and accurately measures adenosine triphosphate (ATP) levels from surface and water samples. With results available in seconds, this tool is commonly used for routine hygiene verification testing in places like kitchens and production spaces to ensure that surfaces are properly cleaned.

Benefits:

- Small and portable, which enables users to obtain results on site without any special equipment
 - Low power consumption- 10 hours battery life and up to 600 hours standby time
 - Quick 10-second result
 - Intelligent software- data can be uploaded to the dedicated PC software after the test
 - Built-in inclinometer that stops the test in case the incline angle is out of range
 - Bluetooth connectivity available (Bluetooth printer pairing)
 - Compatible with ATP-Flow Surface Test and ATP-Flow Total Water Test
- Each PHR1020

ATP-Flow

ProGnosis Biotech's advanced ATP surface and water testing series, known as **ATP-Flow**, provides an effective solution for hygiene monitoring and cleanliness verification.

ATP is a molecule used as an indicator to measure the presence of organic materials to assess cleanliness.

ATP-Flow swabs are designed for ATP surface testing, and ATP-Flow Total is designed to detect the presence of ATP in water samples.

ATP-Flow (Surface ATP Test)

ATP-Flow Total (Water ATP Test)



Cat. no.

SW1020

SW1120

Sani-S'wipe Sampling Cloths

The Sani-S'wipe kit contains a sampling cloth packaged in a sterile, leak-proof blender bag. Sani-S'wipe is designed for the collection of samples used in the detection of microbial contamination and other foodborne pathogens on various surfaces. Sani-S'wipe allows for effective coverage of large surfaces and facilitates comprehensive sampling, whether during ongoing production checks, post-disinfection, or as part of routine inspections. The ultra-resistant fabric of the Sani-S'wipe cloth, offers a non-destructive sampling method that leaves no residue



Dry Sampling Cloth	
100/pk	KSS68230
Sampling Cloth with Buffered Peptone Water	
100/pk	KSS68230BPW100
Sampling Cloth with Neutralizing Buffer	
100/pk	KSS68230NB100

Sani-Stick™ Sponge on Handle

The Sani-Stick™ is designed to collect samples to detect the presence of microbiological contaminations such as Listeria, Salmonella, E. coli, and other food-borne pathogens on almost any surface. These sponges on sticks are widely used in the food, medical, public health, and cosmetic industries. The Sani-Stick™ kit is convenient and easy-to-use, and helps eliminate several time-consuming steps.

- Ideal for surface sampling
- Allows access to hard-to-reach areas
- Made to avoid sponge wedging
- TWIRL'EM® bag with leak-proof closure system
- Sterilized by gamma irradiation



With D/E Neutralizing Buffer	
100/pk	KSS67310DE
With Lethen Broth Solution	
100/pk	KSS67310LT
With Neutralizing Buffer	
100/pk	KSS67310NE

Serial Dilutions

Diluent® Shaker for use with Dilucup® Elegance!

by LabRobot

The Diluent® Shaker uses orbital rotation to make sure each dilution is thoroughly vortexed. It is activated by either a hands-free optical sensor or the optional foot pedal. The 42 LED indicators light each cup, letting you easily see what dilution well you are in.



Features:

- Dimensions: 38cm x 30cm x 5cm
- 7" touch screen
- Two optical sensors, one at each side
- Can create and store testing templates, assuring standardization of method
- Programming with intuitive software
- 6 rows for 42 cups (7 x 6)
- Removable magnetic tray for 42 cups
- Export data to USB (Diluent** and Diluent** Pro only)
- Bar code reading (Diluent* and Diluent* Pro only)
- Able to record sample ID and user ID (Diluent* and Diluent* Pro only)
- Full connectivity to LIMS (Diluent* Pro only)
- Optional Footswitch, Cat. no. 40FS02

Diluent® Shaker Light

Store up to 2 templates. Data retrieval is manual only.

Each

40DGT84LT

Diluent® Shaker Standard Version

Record sample ID, technical or user ID. Bar code scanner capability. Store up to 10 templates. Export data to USB.

Each

40DGT84SD

Diluent® Shaker Pro

LIMS connectivity and traceability for data. Record sample ID, technical or user ID. Bar code scanner capability. Store up to 10 templates.

Each

40DGT84PO



Dilucup® Elegance BFD (Butterfield's Phosphate Buffer)

Butterfield's Phosphate Buffer, dilution blank, 9ml fill, ready-to-use cups.

672/pk

40DEBFD6

Dilucup® Elegance BPW (Buffered Peptone Water)

Buffered Peptone Water, dilution blank, 9ml fill, ready-to-use cups.

672/pk

40DEBPW6



- Easy peel-off film
- Sterile, pre-filled diluent
- Compact for efficient storage

MALDI-TOF Mass Spectrometry

Autof ms1000

Mass Spectrometry

The Autof ms1000 provides automated, high-speed and high-confidence identification and taxonomical laser-induced classification of bacteria, yeasts, fungi, and filamentous fungi based on proteomic fingerprinting. Numerous studies have demonstrated the higher accuracy, faster time-to-result, and lower cost provided by MALDI-TOF technology when compared to classical methods.

Features:

- Faster time-to-result when compared to conventional methods and PCR
- Cost effective
- Robust, intuitive software, supporting 21 CFR part 11 compliance
- LIMS/LIS connectivity and support
Can identify 96 samples in less than 20 minutes hands-on time

The Autof ms1000 has the most expansive database in the industry, which was created with approximately 5,000 species and 17,000 strains. The database of the Autof ms1000 provides highly accurate results.

**Local database includes a total of
5,041 species, and
17,662 strains.**

Cat. no. MS1000





A Culture of Service™

40
MORE THAN



Years of
Bringing You
A Culture of Service



100%
Employee Owned

MADE IN
USA

ESTABLISHED
1980



Hardy Diagnostics
donates 1% of each
sale to charity.



ISO 13485
Quality
Management for
Medical Devices
CERTIFIED

FM 572526

Hardy Diagnostics has a Quality Management System that is certified to ISO 13485 and is a FDA licensed medical device manufacturer.

Headquarters

1430 West McCoy Lane
Santa Maria, CA 93455
800.266.2222
Sales@HardyDiagnostics.com
HardyDiagnostics.com

Distribution Centers

Santa Maria, California
Olympia, Washington
Salt Lake City, Utah
Phoenix, Arizona
Dallas, Texas
Springboro, Ohio
Lake City, Florida
Albany, New York
Raleigh, North Carolina

Copyright © 2025 Hardy Diagnostics

111725ss