

# FOOD MICROBIOLOGY



**HARDY**  
DIAGNOSTICS  
A Culture of Service™

# TABLE OF CONTENTS

Environmental Monitoring	1
Sample Prep and Dilution	8
Dehydrated Culture Media - Criterion™	12
Prepared Culture Media	14
Chromogenic Media - HardyCHROM™	18
CompactDry™	20
Quality Control	24
Membrane Filtration	25
Rapid Tests	26
Lab Supplies/Sample Collection	27



**100%**  
Employee Owned



## Headquarters

1430 West McCoy Lane  
Santa Maria, CA 93455  
800.266.2222 ; phone  
Sales@HardyDiagnostics.com  
HardyDiagnostics.com

## Distribution Centers

Santa Maria, California  
Olympia, Washington  
Salt Lake City, Utah  
Phoenix, Arizona  
Dallas, Texas  
Springboro, Ohio  
Lake City, Florida  
Albany, New York  
Raleigh, North Carolina



FM 572526

Hardy Diagnostics has a Quality Management System that is certified to ISO 13485 and is a FDA licensed medical device manufacturer.

# Environmental Monitoring



Hardy Diagnostics offers a wide selection of quality products intended to help keep you up to date with regulatory compliance, ensure the efficacy of your cleaning protocol, and properly monitor your environment.

TRIO.BAS<sup>™</sup> Impact Air Samplers introduced the newest generation of microbial air sampling. These ergonomically designed instruments combine precise air sampling with modern connectivity to help you properly assess the air quality of your laboratory and simplify your process.

## MONO



### Each kit includes:

TRIO.BAS<sup>™</sup> MONO air sampler, induction battery charger and cable, aspirating head, cover head, hard shell carrying case, and calibration certificates.

100 liters/min., contact plate	Cat. no. <b>BAS200K</b>
100 liters/min., Petri plate	<b>BAS201K</b>
200 liters/min., contact plate	<b>BAS205K</b>
200 liters/min., Petri plate	<b>BAS206K</b>

## DUO



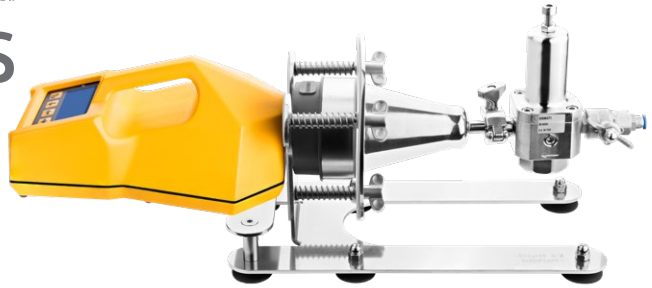
### Each kit includes:

TRIO.BAS<sup>™</sup> DUO air sampler, battery charger and cable, aspirating heads, cover heads, hard shell carrying case, and calibration certificates.

100 liters/min., contact plate	Cat. no. <b>BAS220K</b>
100 liters/min., Petri plate	<b>BAS221K</b>
200 liters/min., contact plate	<b>BAS225K</b>
200 liters/min., Petri plate	<b>BAS226K</b>

## TRIO.GAS

Designed to test the presence of microorganisms in compressed air or gas lines.



- Calibrated regulator guarantees 100 liters per minute flow rate
- Each component of the TRIO.GAS adapter instrument is autoclavable with no disassembly required
- Automated to end sample after programmed volume is reached (when used with MONO or MINI instrument)
- Signal lets operator know the sample is complete (with MONO or MINI instrument)
- Sampling data is retrievable for download via proprietary printer or dedicated software (MONO) or to record manually (MINI).
- No glass valves or meters to crack or break

### TRIO.GAS System and Air Sampler Kit includes:

TRIO.GAS system (stainless steel electro-valve, gas connection, stainless steel fixing system for air sampler), TRIO.BAS unit (MINI or MONO), induction battery charger and cable, carrying case (for TRIO.GAS system), aspirating head, cover head, LIGHT carrying case (for TRIO.BAS unit), and two IQ, OQ, PQ fillable documents for the instrument and TRIO.GAS.



**BAS651K**

Cat. no.

**BAS650K**

**BAS651K**

**BAS654K**

**BAS655K**

TRIO.GAS System + MONO air sampler, 100 liters/min., contact plate

TRIO.GAS System + MONO air sampler, 100 liters/min., Petri plate

TRIO.GAS System + MINI air sampler, 100 liters/min., contact plate

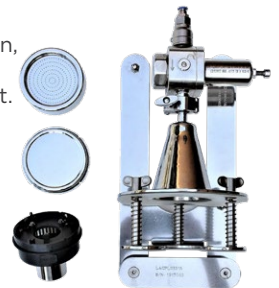
TRIO.GAS System + MINI air sampler, 100 liters/min., Petri plate

### TRIO.GAS System Aspirating Chamber Kit includes:

TRIO.GAS system (stainless steel electro-valve, gas connection, stainless steel fixing system for air sampler), carrying case, aspirating head, cover head, and IQ, OQ, PQ fillable document. TRIO.BAS instrument (MONO or MINI) **NOT** included.

#### Important Note:

If **manually** timed samples and hand recorded sampling data is acceptable, the MINI or MONO instrument is not necessary. Purchase the GAS system BAS652K or BAS653K, which includes aspirating gas chambers. Choose kit based on preferred plate size.



**BAS652K**

**BAS653K**

TRIO.GAS System Aspirating chamber kit, contact plate

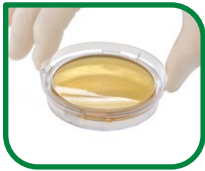
TRIO.GAS System Aspirating chamber kit, Petri plate



# Environmental Monitoring Surface Sampling

## LOK TIGHT™

Contact Plates  
for Surface  
Sampling



Contact Plate Media	Cat. no.
Tryptic Soy Agar (TSA) - <i>Use with TRIO.GAS!</i>	P34
Baird-Parker Agar	P16
D/E Neutralizing Agar	P99
Eosin Methylene Blue (EMB)	P09
HardyCHROM™ ECC	P17
Malt Extract Agar (MEA)	P80, P93
Mannitol Salt Agar (MSA)	P98
Potato Dextrose Agar (PDA) with Chlortetracycline	W93
R2A Agar	P32
Rose Bengal Agar with Chloramphenicol	P42
SabDex (Sabouraud Dextrose) Agar - <i>Use with TRIO.BAS!</i>	P36
Standard Methods Agar	U297



EnviroTrans™	Specifications	Cat. no.
EnviroTrans™ Neutralizing Buffer	2ml, 20/bx 5ml, 20/bx	SRK20 SRK15
EnviroTrans™ Lethen Broth	5ml, 20/bx	SRK25
EnviroTrans™ Saline, 0.85%	0.5ml, 20/bx 2ml, 20/bx 5ml, 20/bx	SRK05 SRK30 SRK35
EnviroTrans™ D/E Neutralizing Broth	5ml, 20/bx	SRK45
EnviroTrans™ Neutralizing Saline	5ml, 20/bx	SRK55

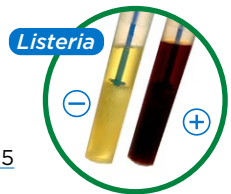
These easy-to-use, AOAC-RI approved tests provide quick color change presumptive results for the most common *Listeria* and *Salmonella* spp. from the environment.

### PDX-LIB *Listeria* (AOAC-RI)

Presumptive results available within 30 hours for the most common *Listeria* spp. (No sub-culturing or specimen transfers required). Light brown to black color formation indicates presence of *Listeria* spp. AOAC-RI approved.

ENVIROMAX™ swab are not included.

PDX-LIB Media, 25/case 2500325

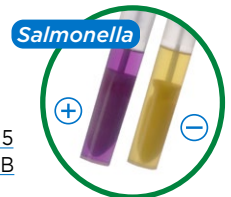


### PDX-SIB *Salmonella* (AOAC)

Presumptive results available within 24-48 hours for the most common *Salmonella* spp. (No sub-culturing or specimen transfers required). Color shift from purple to yellow indicates presence of *Salmonella* spp. AOAC-RI approved.

ENVIROMAX™ swab not included.

PDX-SIB Media, 25/case 2600325  
 EnviroMax® Swab, 250/bx 2588050PFB



# Environmental Monitoring Flock Floor Sampling



## A collection system for monitoring *Salmonella* contamination in flock floor litter and other surfaces.

This one size fits all shoe cover is ready-to-use and pre-moistened with skim milk. This unique design allows for highly efficient sample collection, secure transport, pre-enrichment incubation, and disposal all in the same container! Simply remove the EnviroBootie™ from the sterile sample bag, place the boot swab over a plastic boot cover, then walk through the poultry barn. EnviroBootie™ can also be used as a sampling mitt for belts, feeders, and other recommended sampling surfaces.



### Disposable Plastic Boot Cover

Over-the-shoe plastic disposable boots are easy to slip on and off, have handy tie closure and are made of strong 4mm polyethylene. Fits up to size 12.

50/bx

C14019WA

### EnviroBootie™

2 pre-moistened (2X skim milk) boot swabs per bag (Twil-em™ bag),

50/pk (100 total count) EB50

1 pre-moistened (2X skim milk) boot swab per bag (Twil-em™ bag),

100/pk (100 total count) EB100



# Environmental Monitoring Sampling Sponges

## Solar-Cult® Sponge-Stick (with Neutralizing Buffer)

Solar-Cult® sterile cellulose sponge pre-moistened with Neutralizing Buffer, attached to a quick release handle, packaged in a sterile bag to make this an all-inclusive sampling system.

Specifications	Cat. no.
100/bx	SH10NB1



## Additional Sponges

## Cat. no.

Sampling Sponge, Pre-moistened with Buffered Peptone Water	BS10BPW BS02BPW1
Sample Sponge, Pre-moistened with Butterfield's Phosphate Buffer	BS10BPB1 BS02BPB1
Sampling Sponge, Pre-moistened with DE Neutralizing Broth	BS10DE1 BS02DE1
Sampling Sponge, Pre-moistened with Neutralizing Buffer	BS10NB1 BS02NB1
Dry Speci-Sponge® in a (18oz) Whirl-Pak® Bag	B01245WA B01392WA



B01392WA

# SAMPLE PREP



## BagMixer® 100 Minimix™ Blender

The smallest blender in the world! Digital screen and window door, easily control speed and time of blending and quickly obtain a ready-to-analyze sample, with no risk of cross-contamination.

Specifications	Cat. no.
Laboratory Paddle Blender (homogenizer, masticator), with window door, removable paddles.	100WCC

## Whirl-Pak® Blender Bag

Plain sterile bag for use in all types of homogenizing blenders.

- Made from sturdy, blended polyethylene.

Specifications	Cat. no.
19cm x 30cm, 3ml (.076mm) thick, 1,000/bx	B01420WA
37.5cm x 50cm, 4ml (.102mm) thick, 250/bx	B01474WA

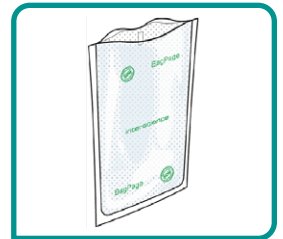


## BagPage® Sterile Blender Filter Bags

BagPage® is a sterile blender bag equipped with a full-surface filter, perfect for the microbiological analysis of pasty samples. Made of Multilayer®, a reinforced multicoated complex, that is resistant for the homogenization of any sample to analyze.

- Sterile, approved for food contact
- Compatible with any blender

Specifications	Cat. no.
19cm x 30cm, 400ml fill, 500/case	122025





Our pre-filled Dilulok™ dilution vial is designed especially for the food, dairy, and water industries. Each lot is meticulously tested for pH, sterility, and fill volume. Designed and packaged to eliminate leaking.



### Heavy duty

Vials are made of sturdy polypropylene with a leak-proof seal that holds up even during air transport.

### Large Opening

A wide 45mm opening accommodates most sample sizes. Each vial is clearly marked with a 90ml and 99ml fill line.

### One-Handed

Flip-top lid allows for easy one-handed opening and closing to make pipeting easier. Saves unnecessary motion! No awkward screw caps or plastic strips to tear off.

### Variety

Available with peptone water, buffered peptone water, butterfield's buffer, deionized water, phosphate buffer with MgCl, and as an empty sterile container (Cat. no. 3538).

### Leak-Proof

Re-engineered for an improved seal. Easy-to-remove, perforated, shrink wrap ensures product integrity.

Dilu-Lok™		
Product	Specifications	Cat. no.
Butterfield's Phosphate Buffer	90ml fill, 50/pk 99ml fill, 50/pk	D590 D599
Phosphate Buffer with MgCl	90ml fill, 50/pk 99ml fill, 50/pk	D690 D699
Peptone Water 0.1% (Irradiated)	90ml fill, 50/pk 99ml fill, 50/pk	D290 D299
Deionized Water	90ml fill, 50/pk 99ml fill, 50/pk	D090 D099
Buffered Peptone Water	90ml fill, with 1% Tween® 20, 50/pk 90ml fill, 50/pk	D085 D080

# SERIAL DILUTIONS

## Diligent Shaker for use with Dilucup® Elegance!

by LabRobot

The Diligent Shaker uses orbital rotation to make sure each dilution is thoroughly vortexed. It is activated by either an hands-free optical sensor or the optional foot pedal. The 42 LED indicators light each cup, letting you easily see what dilution well you are in.



**NEW**



### Features:

- Dimensions: 38cm x 29.5cm x 5cm
- 7" touch screen
- Two optical sensors, one at each side
- Can create and store testing templates, assuring standardization of method
- Programming with intuitive software
- 6 rows for 42 cups (7 x 6)
- Removable magnetic tray for 42 cups
- Export data to USB
- Bar code reading (*Diligent and Diligent Pro only*)
- Able to record sample ID and user ID (*Diligent and Diligent Pro only*)
- Full connectivity to LIMS (*Diligent Pro only*)
- Optional Footswitch, Cat. no. 40FS02

### Diligent Shaker Light

Store up to 2 templates. Data retrieval is manual only.

40DGT84LT

### Diligent Shaker Standard Version

Record sample ID, technical or user ID. Bar code scanner capability. Store up to 10 templates. Export data to USB.

40DGT84SD

### Diligent Shaker Pro

LIMS connectivity and traceability for data. Record sample ID, technical or user ID. Bar code scanner capability. Store up to 10 templates.

40DGT84PO



**ROOM  
TEMPERATURE  
STORAGE**

**MRD (Maximum Recovery Diluent)**

Max Recovery Diluent, dilution blank, 9ml fill, ready-to-use cups, 672 (2 x 16 x 21) total cups with 3 cups/row

**40DEM3**

**BPW (Buffered Peptone Water)**

Buffered Peptone Water, dilution blank, 9ml fill, ready-to-use cups, 672 (2 x 16 x 21) total cups with 3 cups/row

**40DEBP3**

**NaCl (Saline Solution) 0.85%**

NaCl with buffer, dilution blank, 9ml fill, ready-to-use cups, 672 (2 x 16 x 21) total cups with 3 cups/row

**40DEN3**

## Dilushaker III for use with Dilucup® Elegance!

**by LabRobot**

This system reduces technician time, cost, and strain by automatically vortexing each diluent the same way, every time.

**THE ORIGINAL**



- 21 cup tray Dilushaker™ III.....**40DS21PRXT**
- Power Supply.....**40PS12**
- Optional Footswitch.....**40FS02**
- Transport suitcase for 2 Dilushakers.....**40TC1567**

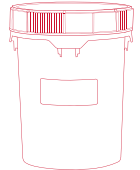
# Dehydrated Culture Media

## CRITERION<sup>™</sup> DEHYDRATED CULTURE MEDIA



Hardy Diagnostics' dehydrated culture media, CRITERION<sup>™</sup>, is formulated to meet or exceed the highest quality standards. Choose from 250 standard formulas or request custom blending to your specifications. Innovative packaging designs and overall reliability make CRITERION<sup>™</sup> the logical choice for culture media in your laboratory.

Visit our catalog for a full product listing!



Product	2L Mylar Zip-Bag	500gm Bottle	2kg Bucket	10kg Bucket
A-1 Medium	C7570	C7571	C7572	C7573
Brain Heart Infusion Agar	C5120	C5121	C5122	C5123
Brain Heart Infusion Broth	C5140	C5141	C5142	C5143
Brilliant Green Bile Broth	C5250	C5251	C5252	C5253
Buffered Peptone Water	C5320	C5321	C5322	C5323
Dextrose Tryptone Agar	C5630	C5631	C5632	C5633
EC Medium	C5690	C5691	C5692	C5693
EC Medium with MUG	C5680	C5681	C5682	C5683
EMB Agar, Levine	C5700	C5701	C5702	C5703
Half Fraser Broth Base	C8040	C8041	C8042	C8043
Hektoen Enteric (HE) Agar	C5840	C5841	C5842	C5843
Lactobacilli MRS Broth	C5930	C5931	C5932	C5933
Lactose Broth	C5940	C5941	C5942	C5943
Lauryl Tryptose Broth	C5980	C5981	C5982	C5983
Lauryl Tryptose Broth with MUG	C5990	C5991	C5992	C5993
Lethen Agar, Modified	C7900	C7901	C7902	C7903
Lethen Broth Modified	C7640	C7641	C7642	C7643
m Endo LES Agar	C7410	C7411	C7412	C7413
MacConkey Agar	C6130	C6131	C6132	C6133
MacConkey Agar w/Sorbitol	C6170	C6171	C6172	C6173
MacConkey Broth	C6140	C6141	C6142	C6143

# Dehydrated Culture Media

Product	2L Mylar Zip-Bag	500gm Bottle	2kg Bucket	10kg Bucket
Malt Extract Agar	C6200	C6201	C6202	C6203
Mueller Hinton Agar	C6420	C6421	C6422	C6423
Mueller Hinton Broth	C7520	C7521	C7522	C7523
MYP Agar Base	C7400	C7401	C7402	C7403
Neutralizing Buffered Peptone Water	C9240	C9241	C9242	C9243
Nutrient Agar	C6460	C6461	C6462	C6463
Orange Serum Agar	C7510	C7511	C7512	C7513
Potato Dextrose Agar (PDA)	C6620	C6621	C6622	C6623
Presence-Absence Broth	C6630	C6631	C6632	C6633
Rapp-Vass (MSRV) Med Base	C6740	C6741	C6742	C6743
Selenite Cystine Broth	C6920	C6921	C6922	C6923
Standard Methods Agar	C6980	C6981	C6982	C6983
Tetrathionate Broth Base 8	C7060	C7061	C7062	C7063
Tryptic Soy Agar (TSA)	C7120	C7121	C7122	C7123
Tryptic Soy Broth (TSB)	C7140	C7141	C7142	C7143
Violet Red Bile Agar (VRBA)	C7260	C7261	C7262	C7263
Violet Red Bile Agar with MUG	C7250	C7251	C7252	C7253
W-L Nutrient Medium	C7300	C7301	C7302	C7303
XLD Agar	C7320	C7321	C7322	C7323

## Petri Plates

Hardy Diagnostics offers an extensive line of sterile Petri plates for all your media-making needs.

Contact us for a complete list.

15x100mm, with stacking ring,

520/case 3561

15x100mm, without stacking ring,

500/case 3301

15x100mm, with stacking ring,

20/bag 330120



## Scoops (disposable)

These sterile sampling spoons come in four sizes and minimize potential personal contact with sampled material. Sterile, disposable, individually wrapped.

$\frac{1}{4}$  Teaspoon, 200/pk 56925109

$\frac{1}{2}$  Teaspoon, 200/pk 56925131

1 Teaspoon, 200/pk 56925164

1 Tablespoon, 200/pk 56925197



# Prepared Culture Media



## **Prepared Culture Media: Plates, bottles, and tubes**

Since 1980, Hardy Diagnostics has grown to manufacture an extensive selection of prepared media products which are packaged in plates, tubes, bottles, bags, and flasks. Our products go through rigorous and extensive QC testing and lot specific Certificates of Analysis are available at [HardyDiagnostics.com](http://HardyDiagnostics.com).

## **Custom Media**

Need a specialized formulation, container, or package? Hardy Diagnostics is ready to assist you with your specific needs. Our Quality Management System is ISO 13485 certified and licensed by the FDA as an "In vitro Medical Device Manufacturer," ensuring the highest standards of quality for our customers.

***Please visit our website or contact your sales representative for full product description, all available fill options, and instructions for use.***



# Prepared Culture Media

Product	Cat. no. (see website for complete descriptions)
Bacillus Cereus Selective Agar	G156
Baird-Parker Agar	G96
Bile Esculin Agar (BEA)	G12
Blood Agar, 5%	A10
Brain Heart Infusion (BHI) Agar	L35
Brilliant Green Agar	G175, G75
Brilliant Green Bile Broth	K66, K09
Brucella Agar with H & K	A30
Brucella Broth	R18
Buffered Listeria Enrichment Broth (BLEB) Base, BAM Formulation	U233
Buffered Listeria Enrichment Broth (BLEB) Selective Supplement	K183
Buffered Peptone Water	U142, U143, K107, K195
Butterfield Phosphate Buffer	U154, U150, U190, U290, U123, K119, K208, K109, K209
Campy Cefex Agar, Modified	A122
Campylobacter (CVA) Agar	A40
CIN Agar	G20
Columbia Blood Agar	A16, A16BX
Cooked Meat Medium	K219
CT-SMAC for <i>E. coli</i> O157	G129
D/E Neutralizing Media	G224, K108, U76, U75, U168
Dichloro Rose Bengal Chloram (DRBC) Agar	G389, W89
EC Medium	K63
EC Medium with MUG	K18
Eosin Methylene Blue (EMB) Agar Levine	G25
Fraser Broth Base	K98, U57
Fluid Thioglycollate Medium, USP	K121, U43, U41, U207
Hektoen Enteric (HE) Agar	G63, J415
Inhibitory Mold Agar	W25, X20, L47, W27
KIA Medium (Kligler Iron Agar)	L70, R70
Lactobacilli MRS Agar	G117
Lactose Broth	U145, U92, U146
Lactose Broth with Durham Tube	K223
Lauryl Tryptose Broth	K33, K61, K32

# Prepared Culture Media

Product	Cat. no. (see website for complete descriptions)
Listeria Enrichment Broth, Modified	U167
Listeria Enrichment Broth	U93
Lysine Iron Agar, Modified	G86
MacConkey Agar	G35
MacConkey Agar with MUG	G37
Mannitol Yolk Polymyxin (MYP) Agar	G147
Mannitol Salt Agar	G40
MIO Medium Motility, Indole, Ornithine (MIO)	Q20, R24
SHIBAM Agar	A146
Motility Test Medium	Q10, Q11
MR-VP Broth	K237, K37
Neomycin Anaerobic Blood Agar	A62
Neutralizing Buffered Peptone Water	U181, U183, K281
Nitrate Broth	K42
Nutrient Agar	W51, L20
Orange Serum Agar	G181
Oxford, Medium, Modified	G46
PALCAM Medium	G149
Phenol Red Broth with Dextrose	Y304
Potato Dextrose Agar (PDA), USP	W60, H51, L90, Q29, U294
Potato Dextrose Agar with TA	W96
Rappaport-Vassiliadis (Broth), USP	K246
Rose Bengal Agar with Chloramphenicol	W87
SabDex (Sabouraud Dextrose) Agar	W20, H39, Q31, L40, U227, U352, U270, U353
SabDex Agar with Lecithin and Tween 80	W71, Q75, U175, U431
Selenite Cystine Broth	K69
SIM Medium	Q30
Simmons Citrate Agar	L80
Standard Methods Agar	G43, G44, U395, Q21, U95, U295
Sterile Deionized Water	U85
TCBS Agar	G55
Tetrathionate Broth Base	K65, U165, Z129

# Prepared Culture Media



Product	Cat. no. (see website for complete descriptions)
Tetrathionate Broth with Brilliant Green	K164
Tryptic Soy Agar (TSA)	G60, H19, G62, G41, U49, U361, U174, L60, Q58, Q13
Tryptic Soy Broth (TSB) Media	U44, U42, U171, U65, U67, U225, U70, U80, U229, U134G, U223, U133, U205, U261, U241, U71, R36, R31, R41, R30, K131, K89, K88, K82, K83, K134
Triple Sugar Iron (TSI) Agar	R32, L50
Tween 80	U11
UVM Broth	U153, U51
Violet Red Bile Agar	G78, U296
Vogel and Johnson Agar	G193
XLD Agar, USP	G65
XLT4 Agar	G165
Yeast and Mold Agar (YM)	G01

# Chromogenic Media

## HardyCHROM™ Chromogenic Culture Media

### HardyCHROM™ ECC (*E. coli* and Coliforms)

A chromogenic medium recommended for the detection, differentiation, and enumeration of *Escherichia coli* and other coliforms in food, beverage, or water samples based on colony color. *E. coli* can be identified as pink to violet-colored colonies on the plate, while coliform bacteria will appear as turquoise colonies.

15x100mm plate,

10/pk G303

Contact plate, 15x100mm plate,

10/PK P17

### HardyCHROM™ Listeria

A chromogenic medium recommended for the selective isolation, differentiation, and enumeration of *Listeria monocytogenes* from food and environmental samples. All *Listeria* species will produce turquoise colonies. *Listeria monocytogenes* and *Listeria ivanovii* will turn turquoise and have white opaque halos.

15x100mm plate,

10/pk G317

### HardyCHROM™ O157

A selective and differential medium recommended for the isolation of *E. coli* O157 from food and environmental sources. Not intended for human diagnostic use. O157 provides an initial screen intended to isolate colonies for further testing. Confirm isolated purple-pink colonies with a latex agglutination test (cat. no. PLO70HD), antisera (cat. no. 295798), or other test methods for complete identification. Testing for the H7 antigen (cat. nos. 221591, 3ml or 295569, 5ml) or verotoxin testing may also be required.

15x100mm plate,

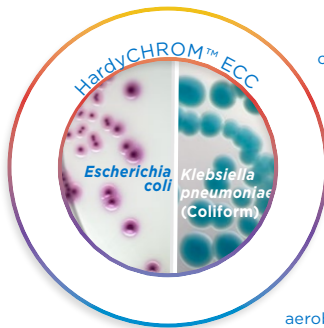
10/pk G305

### HardyCHROM™ Sakazakii

A chromogenic medium recommended for the selective isolation and differentiation of *Cronobacter (Enterobacter) sakazakii* from other members of the *Enterobacteriaceae* family based on colony color. *Cronobacter sakazakii* produces smooth, turquoise colonies. Other members of the *Enterobacteriaceae* family will produce white or colorless colonies with or without black centers. Most Gram-positive bacteria and yeast will be inhibited on this medium.

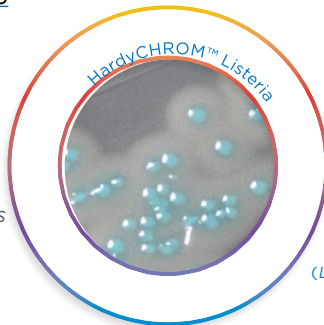
15x100mm plate,

10/pk G315

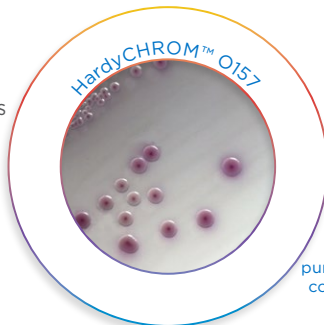


*Escherichia coli* (ATCC 25922) colonies growing on HardyCHROM™ ECC incubated aerobically for 24 hours at 35 °C.

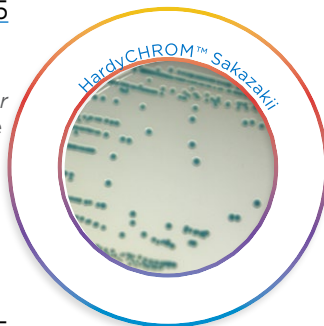
*Klebsiella pneumoniae* (ATCC 13883) colonies growing on HardyCHROM™ ECC incubated aerobically for 24 hours at 35 °C. Typical of all coliforms.



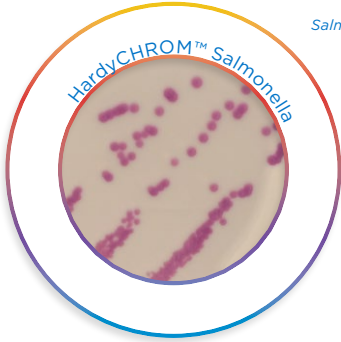
*Listeria monocytogenes* (ATCC 15313) colonies growing on HardyCHROM™ Listeria showing the white halo surrounding the colonies. (*Listeria ivanovii* will appear the same.)



*E. coli* O157 (ATCC 35150) produces smooth purple-pink to mauve colonies at 24 hours.



*Cronobacter sakazakii* (ATCC 29004) colonies growing on HardyCHROM™ Sakazakii incubated aerobically for 24 hours at 35 °C.

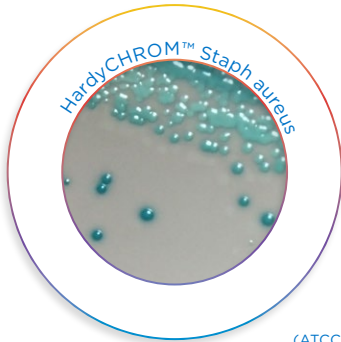


*Salmonella enterica* growing on HardyCHROM™ Salmonella™, Cat. no. J37.

## HardyCHROM™ Salmonella

A chromogenic medium recommended for the selective isolation and differentiation of *Salmonella* spp. from other members of the *Enterobacteriaceae* family based on colony color. Selective agents inhibit the growth of Gram-positive organisms. *Salmonella* species will produce deep magenta-colored colonies. Bacteria other than *Salmonella* spp. may produce blue or clear colonies.

15x100mm plate, 10/pk G309  
HardyCHROM™ Salmonella/XLT-4 Agar Biplate  
15x100mm, 10/pk J37

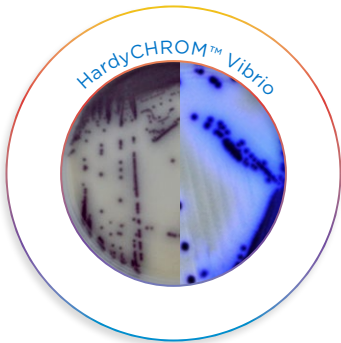


*Staphylococcus saprophyticus* (ATCC™ 15305) colonies incubated aerobically for 24 hours at 35 °C.

## HardyCHROM™ Staph aureus

A chromogenic media for the isolation, differentiation, and reliable detection of *Staphylococcus aureus*. *Staphylococcus aureus* can be identified as smooth, pink-colored colonies on the plate. Other organisms may appear as colorless, blue, turquoise, or cream colonies, or will be inhibited. *Staphylococcus epidermidis* will be inhibited, partially to completely.

15x100mm plate, 10/pk G311



*Vibrio cholerae* (does not fluoresce)    *Vibrio vulnificus* (fluoresces)

## HardyCHROM™ Vibrio

A selective and differential screening media recommended for the isolation of pathogenic *Vibrio* spp. from food and environmental sources. HardyCHROM™ Vibrio was developed as a medium for differentiating *Vibrio cholerae*, *Vibrio parahaemolyticus*, and *Vibrio vulnificus* from other *Vibrios* based on colony color. The shellfish pathogen *Vibrio parahaemolyticus* is differentiated from other *Vibrios* such as *Vibrio alginolyticus* by its teal coloration. The deadly pathogens *Vibrio cholerae* and *Vibrio vulnificus* are differentiated from other *Vibrios* by their magenta coloration, and from each other by the fluorescence of *Vibrio vulnificus* under UV light.

15x100mm plate, 10/pk G319  
HardyCHROM™ Vibrio, CRITERION™  
Dehydrated Culture Media,  
500gm wide-mouth bottle C9011

*\*Also available in Dehydrated Culture Media (Cat. nos. C9010, C9011, C9012, C9013)*

**There is always a better way.**

CompactDry™ is a ready to use system reducing the time needed to perform microbial colony counting on food, beverage, meat, cosmetics, and raw materials. Place 1ml of sample onto the CompactDry™ plate and incubate. Colonies grow and develop specific colors due to chromogenic substrates, providing for easy organism differentiation and counting.

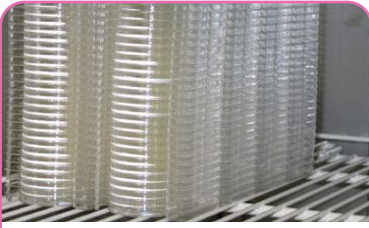
**Self-Diffusing Media.**  
1ml Sample diffuses automatically and evenly. No need for spreader!



**Easy read out of results.**  
Colonies are preserved and easy to pick for subculture.



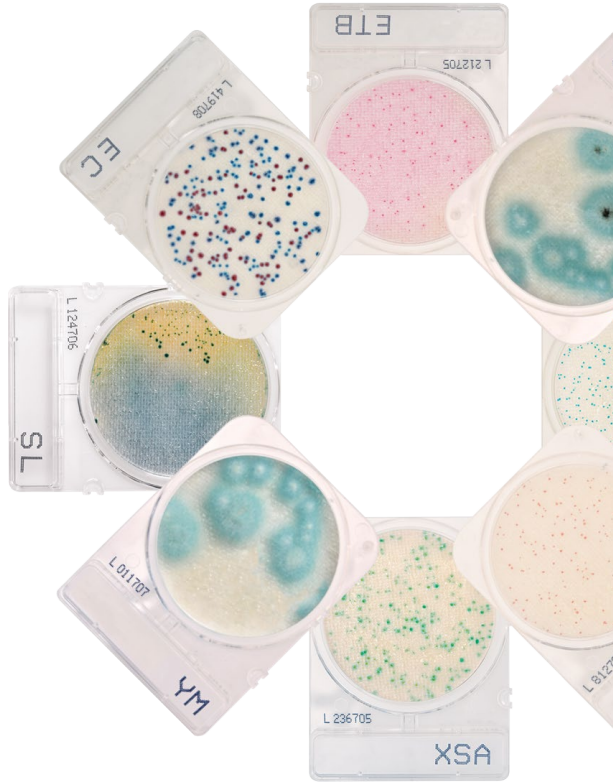
**Stackable and space saving.**



**Easy to handle and pick up.**  
Rigid plastic frame with easy opening and removable lid.



**Convenient labeling area.**



**Room Temperature Storage**

CompactDry™ Product	Description	Cat. no.
TC (Total Count)	For total viable bacterial count. Colonies appear red. 240/pk	54081
EC ( <i>E. coli</i> and Coliforms)	Contains two kinds of chromogenic substrates: Coliforms turn red. <i>E. coli</i> turns blue. 240/pk	54082
YM/YMR (Yeast and Mold)	Yeasts and mold can be differentiated by color. Molds form colonies with a blueish color. 240/pk	54083 54084
ETB (Enterobacteriaceae)	For the isolation and quantification of <i>Enterobacteriaceae</i> that will appear magenta in color. Genera of <i>Enterobacteriaceae</i> consists of: <i>Citrobacter</i> , <i>Enterobacter</i> , <i>Escherichia</i> , <i>Klebsiella</i> , <i>Morganella</i> , <i>Proteus</i> , <i>Salmonella</i> , <i>Serratia</i> , <i>Shigella</i> , <i>Yersinia</i> and more. 100/pk	ETB100
XSA ( <i>Staphylococcus aureus</i> )	For the selective growth and differentiation of <i>Staphylococcus aureus</i> . Its growth results in blue green colonies. 240/pk	54086
LS (Listeria)	For the selective growth, presumptive identification, and enumeration of <i>Listeria</i> spp. 100/pk	LS100
SL ( <i>Salmonella</i> )	Determines the presumptive identification and enumeration of <i>Salmonella</i> spp. Colonies of <i>Salmonella</i> will turn green or blue-green with or without black centers due to the presence of chromogenic substances. 240/pk	54085

## Incubation Temperature & Time

CompactDry™ Product		Incubation Temperature	Incubation Time
Total Count	✓	35 °C	44-48 hrs.
<i>E. coli</i> & Coliforms	✓	35 °C	20-24 hrs.
Yeast and Mold	✓	25 °C	3-5 days
Yeast and Mold Rapid	✓	25 °C	48 hrs.
<i>Enterobacteriaceae</i>	✓	35-37 °C	24 hrs.
<i>Staphylococcus aureus</i>	✓	35 °C	24 hrs.
<i>Listeria</i>		35-37 °C	24-28 hrs.
<i>Salmonella</i>		41-43 °C	20-24 hrs.

✓ = AOAC approved





The Wizard™ CompactDry™ Reader accurately counts up to 300 colonies per plate automatically. The small footprint of the unit saves space on your lab's bench-top.

Easy-to-use: Flip the switch, select your configuration, insert your CompactDry™ plate(s), select read, and save your results!

Cat no. CDR2

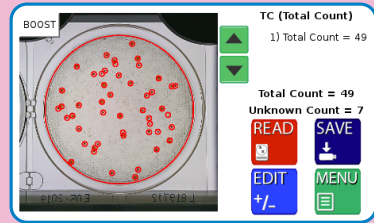
## FEATURES & BENEFITS

- Automatic colony differentiation
- Reads plates in seconds
- Self-contained unit, no PC required
- Data easily exports to LIMS system
- Accurately reads up to 300 colonies per plate
- Auto-focusing 5 mega pixel scanning camera
- Color touch screen
- Save results to USB drive as CSV file or print out results
- Easily update software via USB
- USB ports for saving images, attaching printer, scanner, and wireless keyboard



## CONSISTENCY WHERE IT COUNTS

The Wizard™ brings precise colony counts to each and every set of plates, eliminating the risk of human error and inconsistency.



## YOUR COLONY COUNT IN SECONDS

Save technician hours on this simple and tedious task to maximize your throughput possibilities.

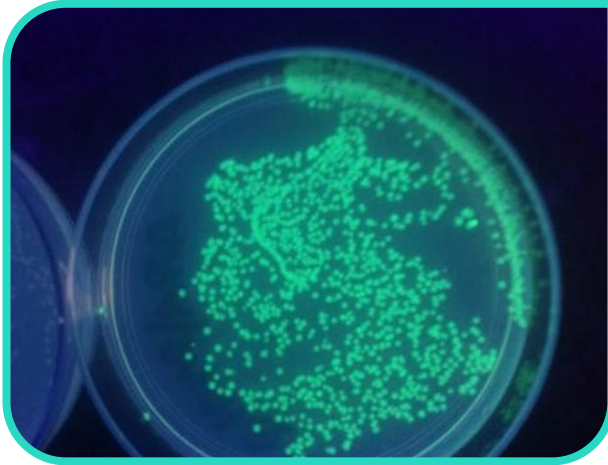
## SIMPLE IMPLEMENTATION

Easy-to-understand instructions make for simple Standard Operating Procedures, allowing you to easily train your team and begin utilizing automation for your colony counts.

## COMPLIANCE MADE EASY

Make data compliance easy in any lab with several ways to save your test results. Transfer to LIMS software, save directly to USB, or print your data.

# Quality Control Organism



## UV-BioTAG

UV-BioTAG™ microorganisms contain a Green Fluorescent Protein (GFP) marker integrated into the chromosome that produces fluorescence of the culture visible under UV light. This allows for easy differentiation of these control strains from contaminants. Available in swab and vial formats,

UV-BioTAG is an easy-to-use solution for quality control in food labs.

- Qualitative product features instant-dissolve pellet to reduce preparation time
- GFP reporter is integrated into the chromosome to provide superior stability
- Assists labs with investigations of positive test results with quick and reliable differentiation of control strains
- Thoroughly tested to ensure authenticity, stability and compatibility with detection technologies

Cat. no.	Description
01227UVS	<i>Escherichia coli</i> (O157:H7) EC43 derived from FDA ESC1177(STEC)
01226UVS	<i>Salmonella enterica</i> subsp. enterica serovar Senftenberg Sal59 derived from FDA SAL5697
01226UVV	<i>Salmonella enterica</i> subsp. enterica serovar Senftenberg Sal59 derived from FDA SAL5697
01223UVS	<i>Salmonella enterica</i> subsp. enterica serovar Typhimurium Sal54 derived from FDA SAL5694
01223UVV	<i>Salmonella enterica</i> subsp. enterica serovar Typhimurium Sal54 derived from FDA SAL5694
01224UVS	<i>Shigella flexneri</i> SF84 derived from FDA SHI0552
01224UVV	<i>Shigella flexneri</i> SF84 derived from FDA SHI0552

# Membrane Filtration



## Sartorius Microsart®

A system that enables you to select the optimal hardware and consumables for your needs in microbiological analysis or particle count in quality assurance. Microsart® features a modular design and offers field-proven standard accessories to make your choice easier. At the heart of the Combisart® system is a stainless steel manifold designed to accommodate all types of filter holders and funnels.

Contact us for our complete Membrane Filtration Catalog!

Media for Membrane Filtration	Cat. no.
Barney Miller Medium	G93
<i>Lactobacilli</i> MRS Agar	G197
<i>Lactobacilli</i> MRS with Cyclohexamide	G179
mEI Agar	G124
m Endo LES Agar	G128
m FC with 1% Rosolic Acid	G126
m HPC Agar	G95
m PA Agar	G133
Modified m TEC Agar	G106
Nutrient Agar with MUG	G114
Orange Serum Agar	G91
Potato Dextrose Agar with TA	G94
Pseudomonas Isolation	G145
R2A Agar	G03
Sabdex Agar with G & C	G159
Skim Milk Agar	G138
Tryptic Soy Agar Plate	G151
WL Differential Medium	G163

# Rapid Tests



Product	Cat. no.
Bacillus-ID, Identification Panel, Microgen®	MID66
Coagulase Plasma	Z003, Z020
EcoliPRO™ O157 Latex Kit	PL070HD
Listeria Identification Panel, Microgen®	MID67, MID60
Legionella Latex	M45
Listeria Latex	F48
Salmonella Elisa Test Kit	CHB0081
StaphTex™ Blue (for <i>Staphylococcus aureus</i> )	ST50, ST200



# Lab Supplies

Nasco **WHIRL-PAK** Nasco



Whirl-pak™ bag, 24oz.  
B01297WA



SureTight™ Sterile  
sample cup  
243810

Nitrile Gloves  
PCS772



Visit our website  
for our full offering of  
Disposable Lab Coats



Hardy provides the  
supplies you need to  
stock your laboratory!  
Please visit our website  
to view our full  
product offering.



Whirl-pak™  
stand-up bag, 18oz  
B01365WA

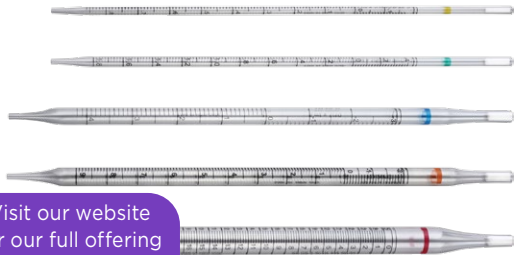
AloeSafe™ hand sanitizer



Flip-Lok™ empty,  
sterile vials  
3538



Alpet D2 surface  
sanitizer/disinfectant



Visit our website  
for our full offering  
of pipettes.

A large rectangular area with rounded corners, outlined in black, containing 20 horizontal lines for writing notes. The lines are evenly spaced and extend across the width of the page.

A large rectangular area with rounded corners, outlined in black, containing 20 horizontal lines for writing notes.



HardyDiagnostics.com  
800.266.2222  
1430 W. McCoy Ln.  
Santa Maria, CA