

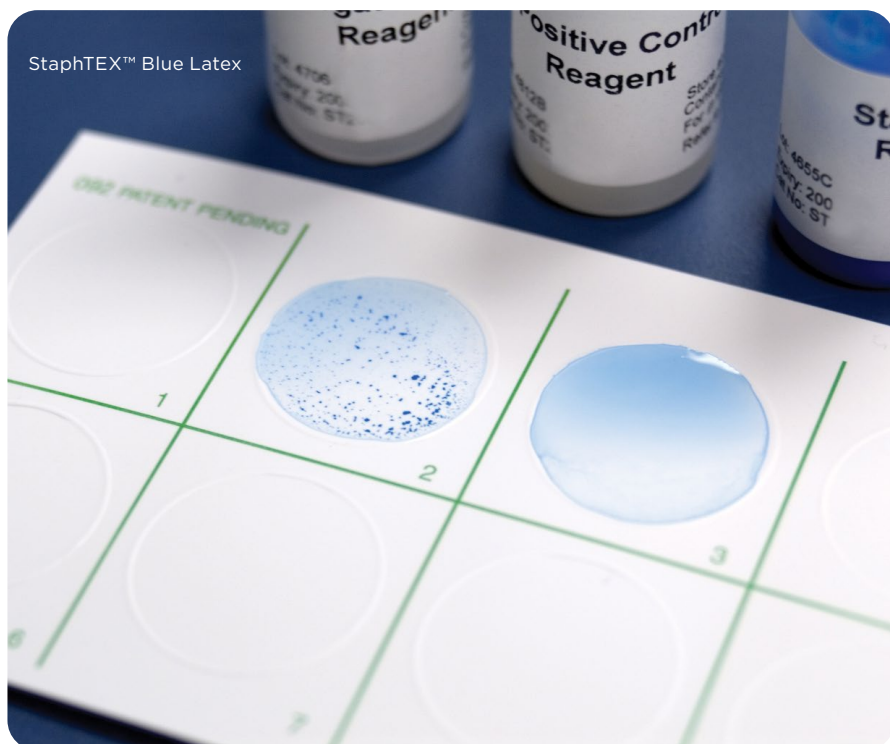
# RAPID AGGLUTINATION Test Kits



# RAPID AGGLUTINATION TEST KITS

## Contents

3	ASO (Anti-Streptolysin)	4	Rheumatoid Arthritis
3	<i>Cryptococcus</i>	5	Rubella
3	<i>E. coli</i> O157	5	<i>Staphylococcus</i> and MRSA
4	Mononucleosis	6	Strep Grouping



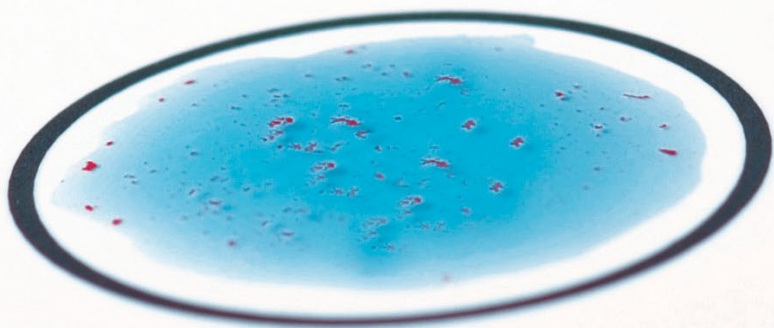
## Agglutination Testing

Agglutination testing is a technique used in microbiology and immunology to detect and identify certain antigens or antibodies by observing the clumping (agglutination) of particles. This method is commonly used in the identification of microorganisms, especially bacteria, and in the detection of antibodies in blood serum.

The principle behind agglutination testing is based on the specific interactions between antigens and antibodies. Antigens are molecules that can stimulate an immune response, and antibodies are proteins produced by the immune system in response to the presence of antigens.

In microbiology, agglutination tests are often used to identify and classify bacteria based on the specific antigens they possess.

Hardy Diagnostics is proud to showcase a variety of rapid agglutination test solutions to aid our laboratory partners in diagnosing infectious diseases, and identifying bacterial strains. Our testing solutions have long shelf lives and most provide answers to you in just a few minutes or less.



# ASO (Antistreptolysin-O)

## ASO Slide Test

A latex slide agglutination assay for the qualitative and semiquantitative detection of antistreptolysin-O (ASO) antibodies in human serum. No initial dilution of patient sample is required for this test. Contains reactive and nonreactive controls.

- Sensitivity: 200 IU/ml
- Specificity: >95%
- Results in two minutes

50 tests	300050
100 tests	300100

## ASO Control Kit

If needed, additional controls can be purchased separately.

2/pk	305001
------	--------

## CRP Slide Test

A latex slide agglutination assay the qualitative and semiquantitative detection of C-reactive protein (CRP) in human serum. No initial dilution of patient samples is required for this test. Contains reactive and nonreactive controls.

- Sensitivity: 6mg/L
- Specificity: >95%
- Results in two minutes

50 tests	500050
----------	--------

# Cryptococcus

## Cryptococcus Antigen Test Kit

A qualitative or semi-quantitative, 5-minute latex agglutination test for detection of polysaccharide antigens associated with *Cryptococcus neoformans* infection. This test can be performed from serum or CSF specimens. Contains both positive and negative controls.

- Results in five minutes

50 tests	R30851501
----------	-----------

# E. coli O157

## E. coliPRO™ O157 Latex

A latex agglutination test for the presumptive detection of *E. coli* serogroup O157 antigen from colonies isolated from culture media. Proprietary antibodies in this test minimize cross-reactions with *Escherichia hermannii* and other sorbitol-negative *Escherichia* spp. Test contains both positive and negative controls.

- Results in two minutes

50 tests	PL070HD
----------	---------

E. coliPRO™  
O157 Latex



# Mononucleosis

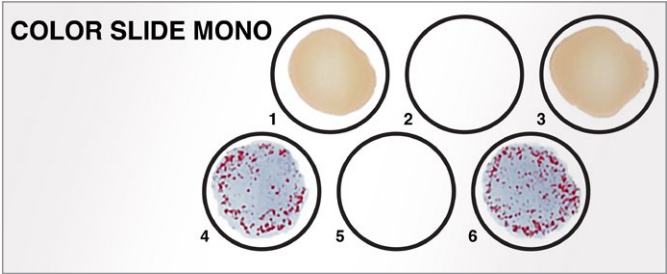
## Color Slide II Mononucleosis Test

A color-enhanced slide agglutination test for detection of heterophile antibodies associated with infectious mononucleosis in serum, plasma, or finger-tip (whole) blood. Test is both qualitative and semiquantitative. Contains both positive and negative controls.

- Results in one minute

50 tests 2468944

Color Slide II  
Mononucleosis Test



## Color Mono II Test

An agglutination test for the qualitative and semi-quantitative detection of heterophile antibodies, in human serum or plasma, associated with infectious mononucleosis. No initial dilution of patient samples is required for this test; reactive and nonreactive controls included.

- 18-24 month refrigerated shelf life from date of manufacture
- Sensitivity: 1:28 Davidsohn titer
- Specificity: >95%
- Results in two minutes

50 tests 450050



# Rheumatoid Arthritis

## RF Direct Slide Test

The ASI RF Direct Slide Test is a slide agglutination assay for the qualitative and semiquantitative determination of rheumatoid factor (RF) in human serum. No initial dilution of patient samples is required for this test; reactive and nonreactive controls included.

- Results in two minutes

100 tests 700100DC

Color Mono II Test

# Rubella

## Rubella Latex

A rapid latex agglutination test for the qualitative and semi-quantitative determination of rubella virus antibodies in serum. This test aids in the diagnosis of recent or active rubella infection and in the determination of immune status. Results from this test correlate with results from hemagglutination inhibition assays. Reactive and nonreactive controls are included.

- Results in eight minutes
- Sensitivity: 1-2 IU/ml (undiluted); 10-20 IU/ml (diluted)

100 tests	600100
-----------	--------

# Staphylococcus and MRSA

## StaphTEX™ Blue Latex

A rapid latex agglutination slide-card test for the identification of *Staphylococcus aureus* from culture media. Tests for both coagulase and protein A found in *S. aureus*. Coagulase is detected in both free and bound form (clumping factor). Contains positive and negative controls.

- Results in less than 30 seconds
- Blue latex on white card for easy read-out

50 tests	ST50
----------	------

200 tests	ST200
-----------	-------

1,000 tests	ST1000
-------------	--------

## MASTALEX™ MRSA

A rapid slide latex test for the detection of penicillin-binding protein 2' (PBP2' also called PBP2a) in isolates of *Staphylococcus*. This test assists in identifying of methicillin-resistant *Staphylococcus aureus*. Contains negative controls.

- Results after three minutes
- May be used for screening or diagnosis

48 tests	RST501
----------	--------



StaphTEX™  
Blue Latex

# Strep Grouping

## StrepPRO™ Grouping Kit for groups A, B, C, D, F, and G

A latex agglutination test for the rapid identification of Lancefield's groups A, B, C, D, F, and G from isolated colonies of beta-hemolytic *Streptococcus* spp. and *Enterococcus faecalis*. All reagents are liquid, ready-to-use, and color coded for ease of identification.

- Greater than 98% sensitivity compared to Lancefield precipitation results. As little as one colony is needed for testing, saving time and resources without compromising accuracy.
- Complete procedure takes only two minutes

60 tests PL030HD

*Provided in kit format or separate components listed below*

### StrepPRO™ Extraction Reagents

Extraction reagents for the StrepPRO™ Grouping Kit. (Sold Individually)

Extraction 1, 60 tests	PL037HD
Extraction 2, 60 tests	PL038HD
Extraction 3, 60 tests	PL039HD

### StrepPRO™ Grouping Reagents

(Sold Individually)

Group A, 60 tests	PL031HD
Group B, 60 tests	PL032HD
Group C, 60 tests	PL033HD
Group D, 60 tests	PL034HD
Group F, 60 tests	PL035HD
Group G, 60 tests	PL036HD

### StrepPRO™ Polyvalent Positive Control

Positive Control for the rapid latex agglutination test for the identification of streptococcal groups.

60 tests PL040HD

### Latex Agglutination Test Cards

Disposable white cards with ten raised reaction circles used for rapid latex agglutination testing.

48/pk PL092HD

### 4" Wooden Mixing Sticks

Flat-end 4" wooden mixing sticks.

75/pk PL091HD

StrepPRO™ Grouping Kit for groups A, B, C, D, F, and G







Hardy Diagnostics  
donates 1% of net  
profits to charity.



FM 572526

Hardy Diagnostics has a Quality Management System that is certified to ISO 13485 and is a FDA licensed medical device manufacturer.

#### Headquarters

1430 West McCoy Lane  
Santa Maria, CA 93455  
800.266.2222  
Sales@HardyDiagnostics.com  
HardyDiagnostics.com

#### Distribution Centers

Santa Maria, California  
Olympia, Washington  
Salt Lake City, Utah  
Phoenix, Arizona  
Dallas, Texas  
Des Moines, Iowa  
Springboro, Ohio  
Lake City, Florida  
Albany, New York  
Raleigh, North Carolina

