

NG-TEST®

CARBA 5

Detects the
enzymes which
break down
carbapenem
antibiotics
confirming
Antimicrobial
Resistance



Rapid
detection and
differentiation
of the most
common
carbapenemases
produced by
Enterobacterales
and
*Pseudomonas
aeruginosa*

Introducing NG-TEST® CARBA 5

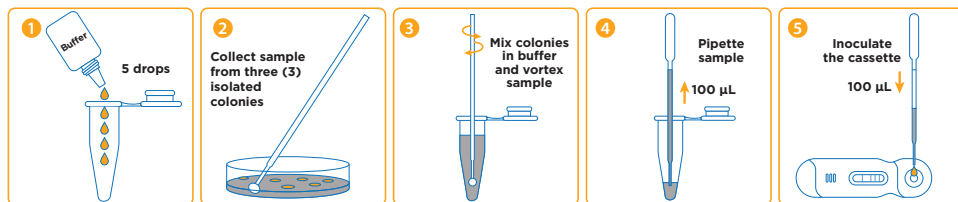
NG-TEST® CARBA 5 is the only rapid, multiplex, phenotypic test capable of simultaneously detecting **KPC, OXA-48-like, VIM, IMP, and NDM** carbapenemases produced by Enterobacterales and *P. aeruginosa*.

Cost effective - Per test, **NG-TEST® CARBA 5** is more economical than molecular methods. Reimbursement for up to five CPT codes.

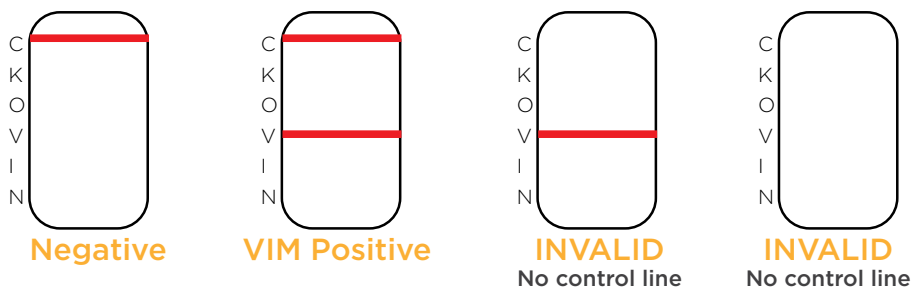
Accurate - **NG-TEST® CARBA 5**, unlike molecular methods, detects the carbapenemase enzyme which is crucial to aiding therapeutic decisions.

20/pk CARBA5

5 simple steps!



Example of interpretation



With **NG-TEST® CARBA 5** you don't need to guess. Simply perform the test from approved bacterial culture and in 15 minutes you'll save more than money; **you'll be saving lives.**

Find what you're looking for more quickly than ever before.



Rapid.
Accurate.
User Friendly.

Variants comparison

Xpert Carba-R vs CARBA 5

Data from both kit's IFU

Carbapenemase	Variants tested and detected by Xpert Carba-R	Variants predicted to be detected by Xpert Carba-R (but not tested)	Variants detected by NG-TEST [®] CARBA 5 in U.S. clinical trial	NG-TEST [®] CARBA 5 variants detected analytically and in publications
KPC	2, 3, 4	5, 6, 7, 8, 9, 10, 11, 12, 13, 14, 15, 16	2, 3, 4, 12	2, 3, 4, 5, 6, 7, 9, 12, 14, 23, 28, 31, 33, 39
NDM	1, 2, 4, 5	3, 6, 7, 8, 9	1, 5, 6, 7	1, 2, 3, 4, 5, 6, 7, 8, 9, 11, 19
VIM	1, 2, 4, 10, 19	5, 6, 7, 8, 9, 11, 12, 13, 14, 15, 16, 17, 18, 20, 23, 24, 25, 26, 27, 28, 29, 30, 31, 32, 33, 34, 35, 36, 37, 38	1, 2, 4, 5, 6, 23, 27, 31	1, 2, 4, 5, 6, 11, 23, 26, 27, 31, 39, 46, 51, 52, 54, 56, 58, 59
OXA	48, 181	162, 163, 204, 232, 244, 245, 247	48, 181, 232	48, 162, 163, 181, 204, 232, 244, 245, 370, 405, 436, 484, 505, 517, 519, 793
IMP	1, 2, 4, 6, 10, 11	3, 8, 9, 10, 11, 13, 19, 20, 21, 22, 24, 25, 27, 28, 30, 31, 33, 37, 40, 42	1, 4, 7, 8/47, 19, 26	1, 2, 4, 5, 6, 7, 8/47, 10, 11, 13, 15, 16, 18, 19, 22, 26, 29, 31, 37, 39, 46, 56, 58, 63, 71, 79

- More variants are validated with CARBA 5 compared to Xpert Carba-R according to IFUs.
- Cepheid gives a list of variants predicted to be detected but not tested.

Performance of NG-TEST[®] CARBA 5 vs. the comparator method

Plate	Organism Group	NG-TEST [®] CARBA 5	Reference method	Percent Agreement ¹	
5% Sheep's Blood and MacConkey agar	Enterobacterales and <i>Pseudomonas aeruginosa</i>	169	169	100.00%	Positive agreement
		137	144	95.1%	Negative agreement
		306	313	97.8%	Overall agreement
HardyCHROM [™] CRE agar	<i>E. coli</i> , KES	284	284	100%	Positive agreement
		74	82	90.2%	Negative agreement
		358	366	97.8%	Overall agreement

¹After discrepant analysis, the overall percent agreement increased to 100% for NG-TEST[®] CARBA 5 results for all organisms tested from each plate type.

Manufactured by NG Biotech.
Distributed by Hardy Diagnostics



FM 572526

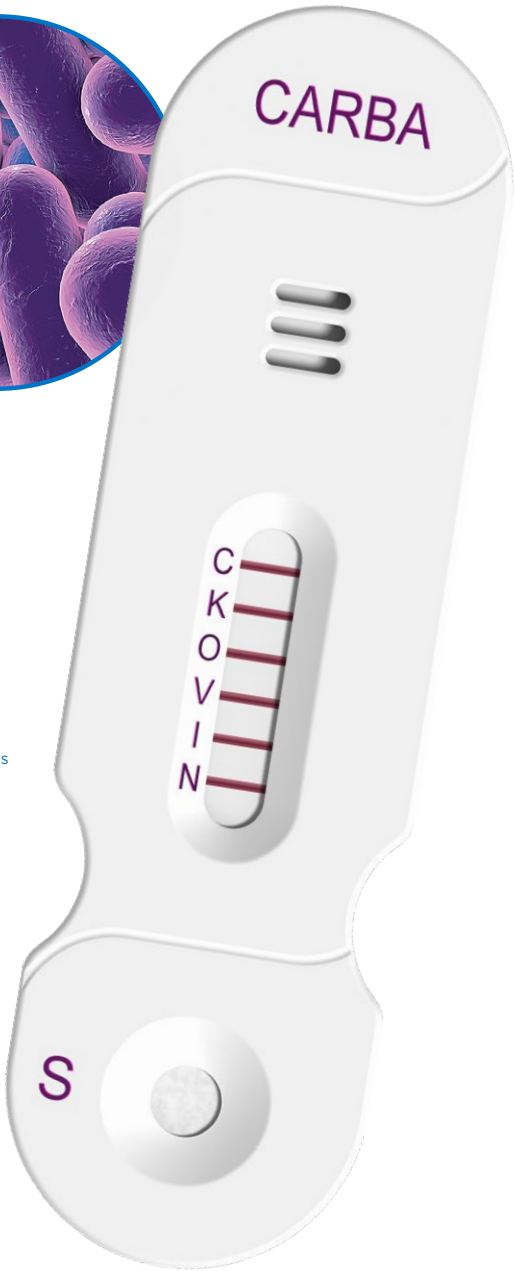
Hardy Diagnostics has a Quality Management System that is certified to ISO 13485 and is a FDA licensed medical device manufacturer

Headquarters

1430 West McCoy Lane
Santa Maria, CA 93455
800.266.2222
Sales@HardyDiagnostics.com
HardyDiagnostics.com

Distribution Centers

Santa Maria, California
Olympia, Washington
Salt Lake City, Utah
Phoenix, Arizona
Dallas, Texas
Des Moines, Iowa
Springboro, Ohio
Lake City, Florida
Albany, New York
Raleigh, North Carolina



Free samples available. For more information,
quotes, samples or demonstrations, please
contact us at
CustomerSuccess@HardyDiagnostics.com