

# Hardy **CHROM**™

CHROMOGENIC CULTURE MEDIA



 **HARDY**  
DIAGNOSTICS

# Table of Contents

<b>2</b>	HardyCHROM™ Bcc
<b>4</b>	HardyCHROM™ BluEcoli™ Biplate
<b>6</b>	HardyCHROM™ Campy
<b>8</b>	HardyCHROM™ Candida
<b>10</b>	HardyCHROM™ Candida + auris
<b>12</b>	HardyCHROM™ CRE
<b>14</b>	HardyCHROM™ CRE/ESBL
<b>16</b>	HardyCHROM™ ECC
<b>18</b>	HardyCHROM™ ESBL
<b>20</b>	HardyCHROM™ Group A Strep
<b>22</b>	HardyCHROM™ HurBi™ Biplate
<b>24</b>	HardyCHROM™ Listeria
<b>26</b>	HardyCHROM™ MRSA
<b>28</b>	HardyCHROM™ O157
<b>30</b>	HardyCHROM™ Sakazakii
<b>32</b>	HardyCHROM™ Salmonella
<b>34</b>	HardyCHROM™ Staph aureus
<b>36</b>	HardyCHROM™ SS NoPRO™
<b>38</b>	HardyCHROM™ UTI
<b>40</b>	HardyCHROM™ Vibrio

Hardy**CHROM**™

For use in Clinical, Environmental,  
Food, and Veterinary laboratories

**Hardy Diagnostics** was the first company to bring chromogenic media to America in 1996, which originated in Paris, France. Over the years, Hardy developed the largest line of chromogenic media in the US. Hardy's formulas are unique and have been meticulously and painstakingly developed by our R&D microbiologists, who must test hundreds of formulas before discovering the optimal combination of ingredients for the final product. This resulted in a medium that assisted microbiologists in making rapid and accurate identifications based on colony color, thus simplifying the procedures and saving time as well. Try our chromogenic media in your testing program and discover the difference that Hardy's innovative products can make.



# HardyCHROM™ Bcc

15x100mm plate, 10/pk, **Cat. no. G335**

## Intended Use

**HardyCHROM™ Bcc** is for selective isolation and differentiation of *Burkholderia cepacia*, and other closely related species, based on colony color. Growth of *Burkholderia cepacia*, or members of the Bcc group, grow on the media after 2-3 days with formation of pink to purple colonies.



## Color Read-Out Interpretation

HardyCHROM™ Bcc is highly selective for *B. cepacia* and 28 other Bcc strains, including *B. cenocepacia* and *B. multivorans*. HardyCHROM™ Bcc is inhibitory for *P. aeruginosa*.

Growth of *B. cepacia*, or members of the Bcc group, are eventuated by a visible color change after three days of incubation at 30-35°C, with formation of pink to purple colonies.



***Burkholderia cepacia***

# HardyCHROM™

## BluEcoli™ Biplate

15x100mm plate, 10/pk, **Cat. no. J123**

### Intended Use

**BluEcoli™ Urine Biplate** is a urine culture medium consisting of Blood Agar on one side and BluEcoli™ Agar on the other side, which is used for the isolation of urinary pathogens and for the identification of *Escherichia coli*.

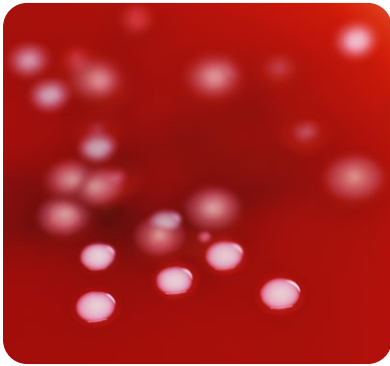
This revolutionary agar plate economically screens urine specimens for *E. coli*. Since 80-90% of all positive urine cultures are *E. coli*, the **BluEcoli™ Urine Biplate** is a fast, easy, and cost effective way of identifying the majority of UTIs.<sup>1</sup> Now you can identify *E. coli* based on colony color with no further testing needed!



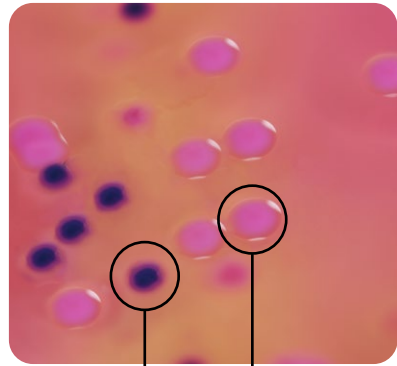
# Color Read-Out Interpretation

Inoculate both sides of this biplate with the urine specimen. If the pathogen is *E. coli*, the colonies on the chromogenic side of the biplate will turn blue.<sup>2</sup>

The blue color is confirmatory! No further confirmation or indole testing is required.<sup>3</sup> With the BluEcoli™ Urine Biplate, you can select a colony from the blood agar side of the biplate for susceptibility testing.



*Staphylococcus aureus*



*Escherichia coli*

*Klebsiella pneumoniae*

<sup>1</sup>Kodaka et al., Journal of Clinical Microbiology, Jan. 1995, p.199-201.

<sup>2</sup>Colonies of the serotype *E. coli* O157, which are not usually associated with urinary tract infections, are an exception, and will not turn blue on the chromogenic side of the BluEcoli™ Urine Biplate.

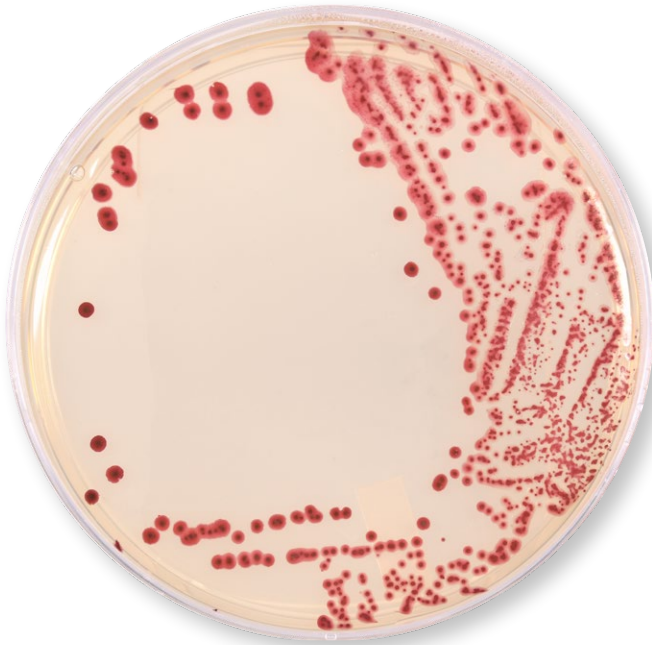
<sup>3</sup>The performance of a spot indole test alone is not an adequate screen for *E. coli*, since there are at least 52 species of gram-negative bacilli that grow on MacConkey, are indole-positive and ferment lactose.

# HardyCHROM™ Campy

15x100mm plate, 10/pk, **Cat. no. G339**

## Intended Use

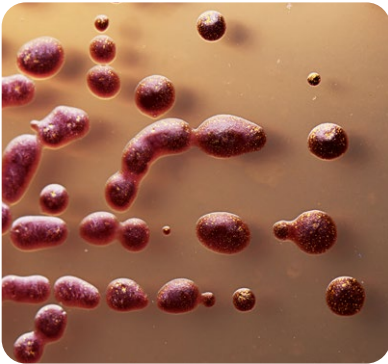
**HardyCHROM™ Campy** Agar is recommended as a screening medium for the selective isolation and chromogenic differentiation of *Campylobacter* spp. from direct stool cultures or from food or poultry samples. HardyCHROM™ Campy Agar is composed of a highly nutritious basal medium containing vitamins, essential nutrients, salts, and growth factors to help support the growth of *Campylobacter* spp.



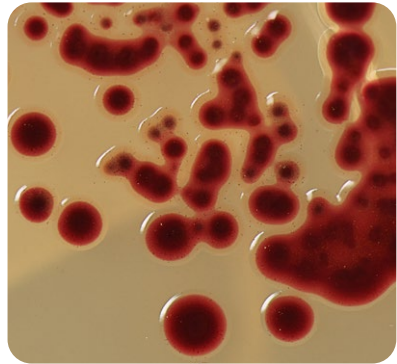


# Color Read-Out Interpretation

- *Campylobacter* forms red colonies on a translucent background, making detection easy.
- Selects for *Campylobacter* species from mixed samples, especially *C. jejuni*, *C. lari*, *C. coli*, and *C. fetus*.



*Campylobacter jejuni*



*Campylobacter coli*

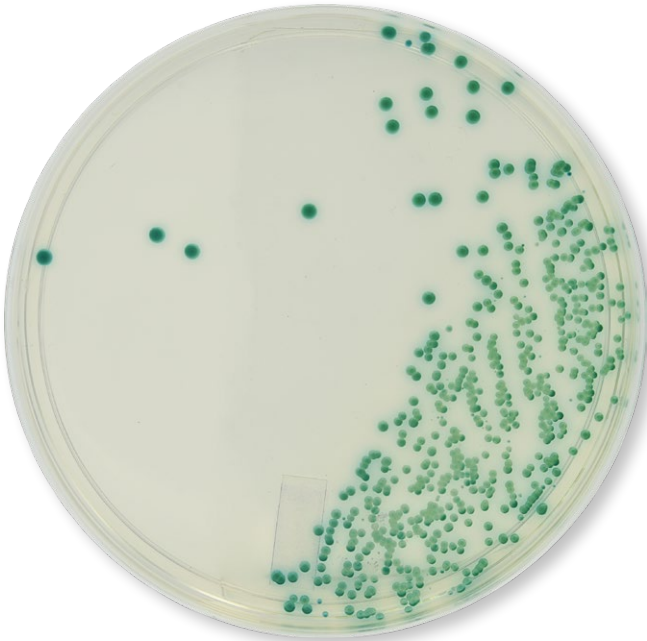
# HardyCHROM™ Candida

15x100mm plate, 10/pk, **Cat. no. G301**

## Intended Use

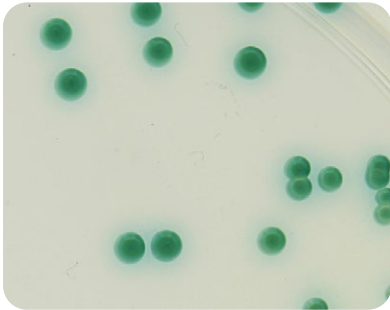
**HardyCHROM™ Candida** utilizes on chromogenic substances to reveal specific enzymes for species identification by color. Due to the unique colors produced, no further testing is needed to identify *C. albicans*, *C. tropicalis*, and *C. krusei*. A trehalose test is needed to confirm *C. glabrata*.

- Helpful in spotting mixed infections.
- Color development occurs within 24 to 48 hours.
- Colors are bright and easy to read out.



# Color Read-Out Interpretation

- *C. albicans* produces smooth, medium green to dark metallic green colonies.
- *C. tropicalis* colonies appear medium blue to dark metallic blue with a blue halo.
- *C. glabrata* produces smooth, pink colonies, often with a darker mauve center. Further testing, such as Rapid Trehalose Fermentation Broth (Cat. no. Z205) is needed for confirmation.
- *C. krusei* produces rough, spreading, pink colonies.



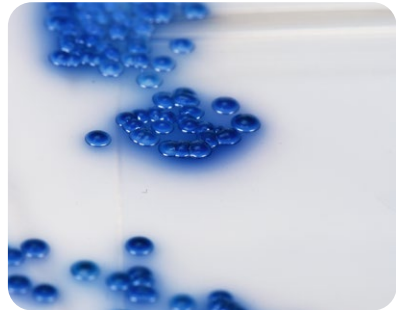
*Candida albicans*



*Candida krusei*



*Candida glabrata*



*Candida tropicalis*

## Dehydrated Culture Media Also Available



### **CRITERION™ HardyCHROM™ Candida**

Mylar® zip-bag to make 2L, **Cat. no. C9000**

500gm wide-mouth bottle, **Cat. no. C9001**

2kg bucket, **Cat. no. C9002**

10kg bucket, **Cat. no. C9003**

# HardyCHROM™

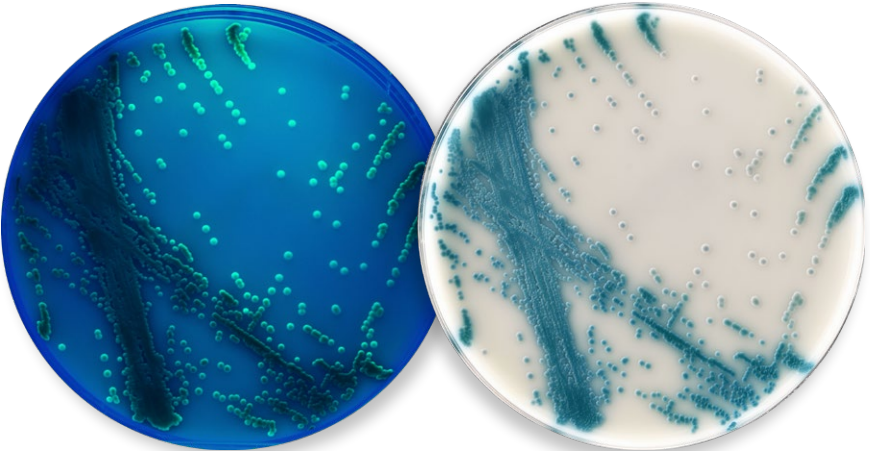
## Candida + auris

15x100mm plate, 10/pk, **Cat. no. G343**

### Intended Use

**HardyCHROM™ Candida + auris** is recommended for the selective isolation and differential identification of *Candida* species. Colonies of *C. auris* will appear white with a characteristic teal to teal-green “bullseye” center and show a unique fluorogenic reaction under UV light at 48-72 hours. *C. auris* is unique amongst other *Candida* species because it causes outbreaks and is resistant to nearly all antifungal drugs. This pathogen is also difficult to identify and thus can be misidentified as other species of yeasts. This medium also allows for the differentiation of *C. tropicalis*, *C. albicans* and *C. krusei*, and can aid in the identification of *C. glabrata* when used in conjunction with Rapid Trehalose Broth or GlabrataQuick™. All colonies suspected of *C. auris* should be subjected to confirmatory methods such as MALDI.

#### Unique fluorogenic reaction under UV light!



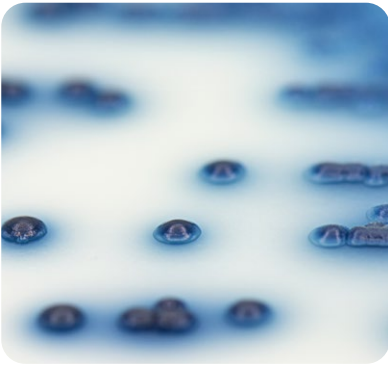
*Candida auris* under UV light at 48 hours.

*Candida auris* at 48 hours under visible ambient light. Note the white perimeter and teal colored center of the isolated colonies.

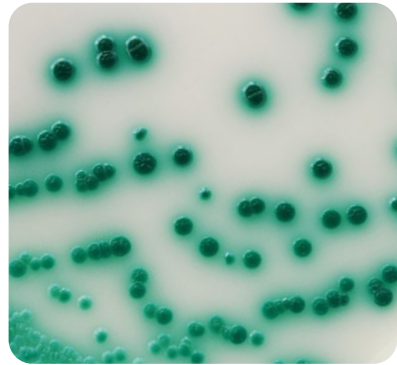
# Color Read-Out Interpretation

This medium also allows for the differentiation of *C. tropicalis*, *C. albicans* and *C. krusei*, and can aid in the identification of *C. glabrata* when used in conjunction with Rapid Trehalose Broth or GlabrataQuick™.

- *C. tropicalis* colonies appear medium blue to dark metallic blue with a blue halo.
- *C. albicans* produces a smooth, medium to green dark metallic green colonies.
- *C. glabrata* produces smooth, pink colonies, often with a darker mauve center.
- *C. krusei* produces rough, spreading, pink colonies.



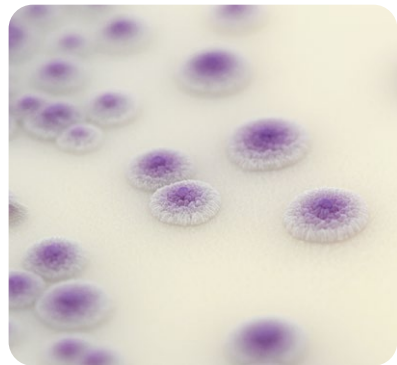
***Candida tropicalis***



***Candida albicans***



***Candida glabrata***



***Candida krusei***

# HardyCHROM™ CRE

15x100mm plate, 10/pk, **Cat. no. G323**

## Intended Use

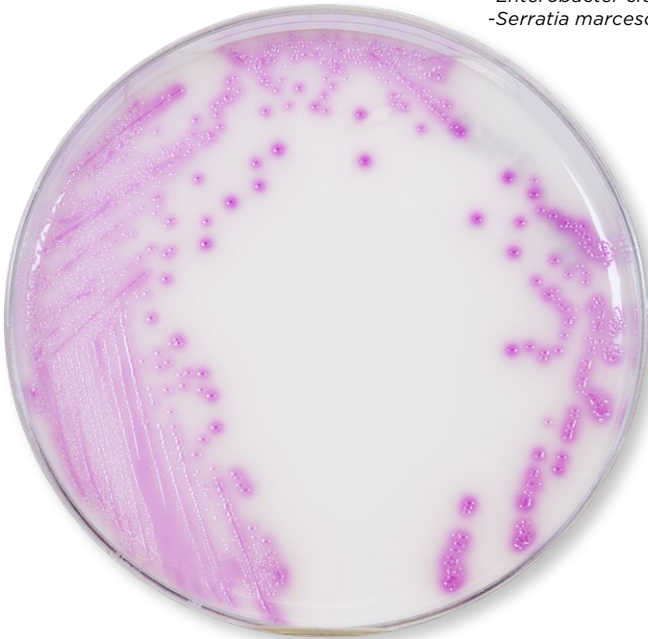
**HardyCHROM™ CRE** is a selective and differential chromogenic agar medium intended for the qualitative and presumptive detection of *Escherichia coli* and KES\* that are non-susceptible to carbapenems from stool specimens.

**HardyCHROM™ CRE** is intended as an aid in the detection, identification of colonization and control of these bacteria in a healthcare setting. Results can be interpreted after incubation for 18-24 hours. Subculture to non-selective medium is required for confirming identification, antimicrobial susceptibility testing and epidemiological typing.

### FDA cleared.

**HardyCHROM™ CRE** is not intended to diagnose infection or guide therapy.

\*KES =  
-*Klebsiella aerogenes*  
-*Klebsiella oxytoca*  
-*Klebsiella pneumoniae*,  
-*Enterobacter cloacae* complex  
-*Serratia marcescens*

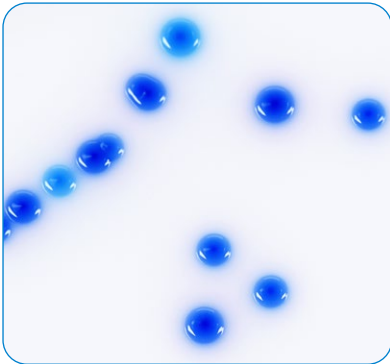


# Color Read-Out Interpretation

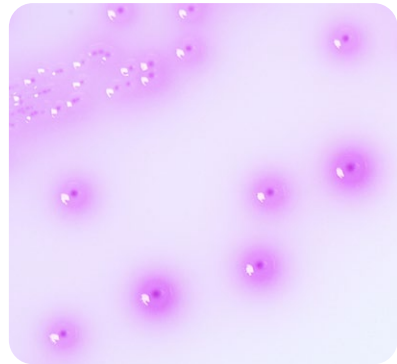
KES produce large, dark blue colonies (with or without pink halos) and are presumptive positive for carbapenem non-susceptible KES (*Klebsiella aerogenes*, *Klebsiella oxytoca*, *Klebsiella pneumoniae*, *Enterobacter cloacae* complex, and *Serratia marcescens*).

Non-susceptible *E. coli* produces colonies that are pink to magenta in color.

Colonies that are not pink to magenta, blue, or blue with pink halos are negative. No carbapenem non-susceptible *Escherichia coli* or KES detected.



***Klebsiella pneumoniae***



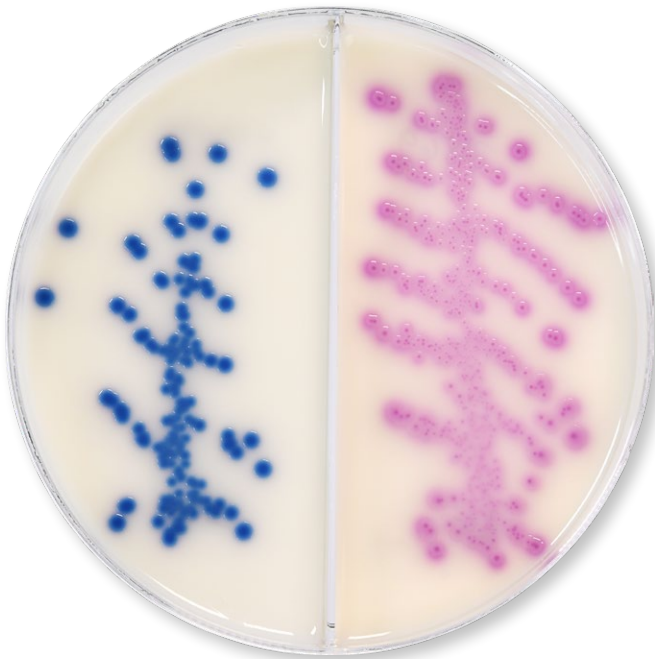
***Escherichia coli***

# HardyCHROM™ CRE/ESBL

15x100mm biplate, 10/pk, **Cat. no. J28**

## Intended Use

Hardy Diagnostics is proud to release its latest **FDA cleared** chromogenic biplate intended to aid in the detection and identification of **CRE** and **ESBL**. The unique chromogenic properties in **HardyCHROM™ CRE/ESBL** allows for bright, distinct color read-outs.



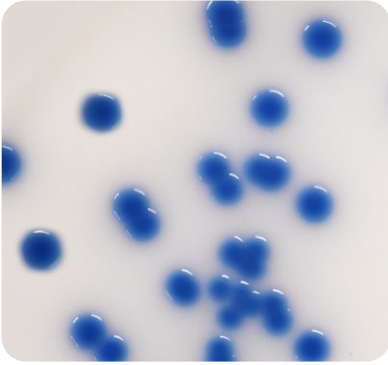


# Color Read-Out Interpretation

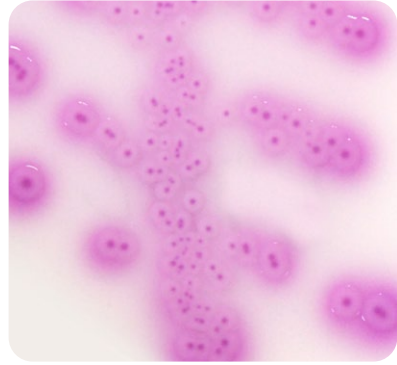
## CRE

Intended for the qualitative and presumptive detection of *Escherichia coli* and KES (*Klebsiella aerogenes*, *Klebsiella oxytoca*, *Klebsiella pneumoniae*, *Enterobacter cloacae* complex, and *Serratia marcescens*) that are non-susceptible to carbapenems from stool, rectal swabs and related specimens. KES produce large, dark blue colonies (with or without pink halos) and are presumptive positive for carbapenem non-susceptible KES.

Non-susceptible *E. coli* produces colonies that are pink to magenta in color. Colonies that are not pink to magenta, blue or blue with pink halos are negative. No carbapenem non-susceptible *Escherichia coli* or KES detected.



***Klebsiella pneumoniae***



***Escherichia coli***

## ESBL

Intended for the qualitative and presumptive detection from stool specimens of: Enterobacterales that are potentially non-susceptible to ceftazidime and cefpodoxime and extended-spectrum beta-lactamase (ESBL)-producing *Escherichia coli*, *Klebsiella pneumoniae* and *Klebsiella oxytoca*. Growth can appear as early as 18 hours of incubation. *Escherichia coli* will produce pink to magenta colonies, *Proteus mirabilis* will produce yellow or gold colonies, and *Klebsiella pneumoniae* will produce blue to purple colonies with or without a pink halo.



***Proteus mirabilis***

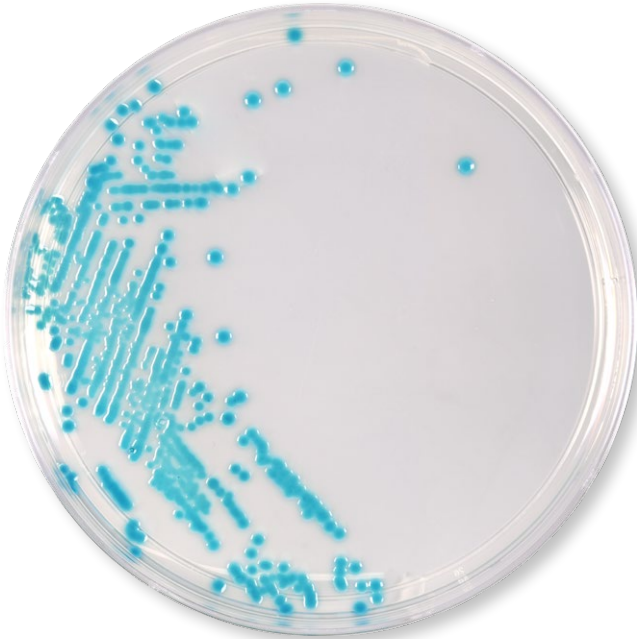
# HardyCHROM™ ECC

15x100mm plate, 10/pk, **Cat. no. G303**

## Intended Use

**HardyCHROM™ ECC** is a chromogenic media recommended for the detection, differentiation, and enumeration of *Escherichia coli* and other coliforms in food, water, or environmental samples based on colony color.

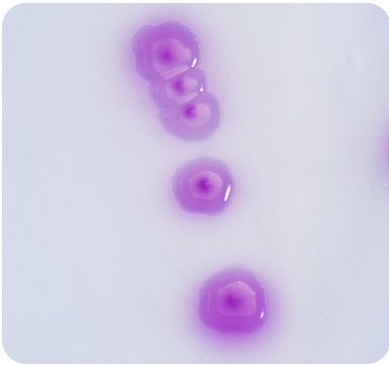
Routine testing to assess the sanitary quality of food and water is directed at the detection and enumeration of indicator microorganisms rather than pathogens. The coliform group of microorganisms is recognized as the principal indicator of unsanitary conditions. Coliform microorganisms are characterized as gram-negative, lactose-fermenting rods. They are present in the intestinal tract of man and other animals, and non-fecal coliforms are found in many areas of the environment, including in soil and on plants.



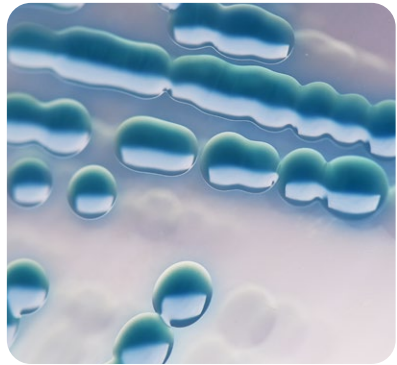
# Color Read-Out Interpretation

*Escherichia coli* colonies growing on HardyCHROM™ ECC. Incubated aerobically for 24 hours at 35°C. Growth; smooth pink to violet colonies.

*Klebsiella pneumoniae* colonies growing on HardyCHROM™ ECC. Incubated aerobically for 24 hours at 35°C. Growth; smooth turquoise colonies.



*Escherichia coli*



*Klebsiella pneumoniae*

## Also Available

**LokTight™ HardyCHROM™ ECC**  
15x65mm contact plate  
(for environmental screening),  
10/pk, **Cat. no. P17**



# HardyCHROM™ ESBL

15x100mm plate, 10/pk, **Cat. no. G321**

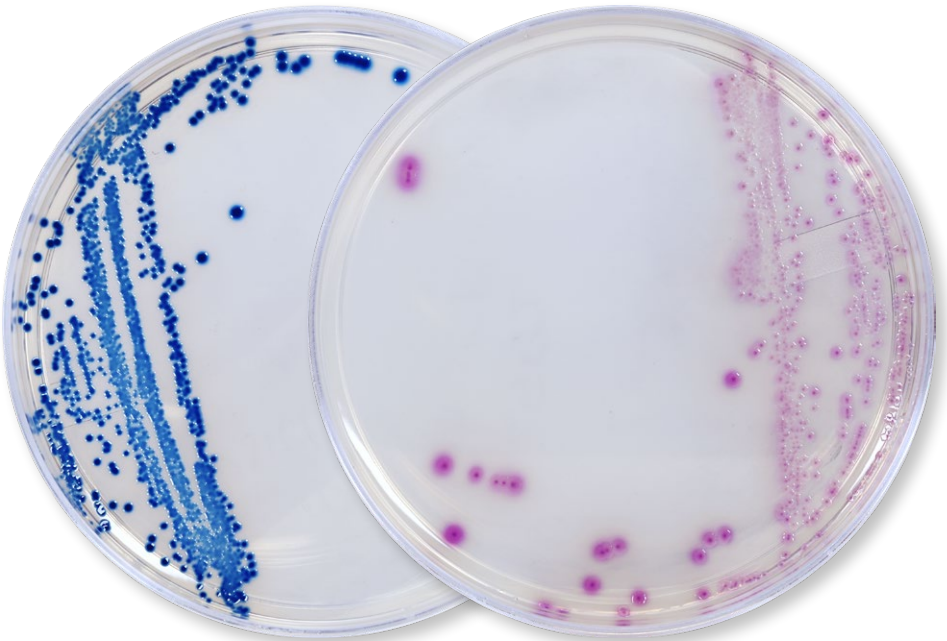
## Intended Use

**HardyCHROM™ ESBL** is a selective and differential chromogenic medium which is intended for the qualitative and presumptive detection from stool specimens of:

- Enterobacterales that are potentially non-susceptible to ceftazidime and cefpodoxime.
- Extended-spectrum beta-lactamase (ESBL)-producing *Escherichia coli*, *Klebsiella pneumoniae* and *Klebsiella oxytoca*.

Growth can appear as early as 18 hours after inoculation. *Escherichia coli* will produce pink to magenta colonies, *Proteus mirabilis* will produce yellow or gold colonies and *Klebsiella pneumoniae* produce blue to purple colonies with or without a pink halo.

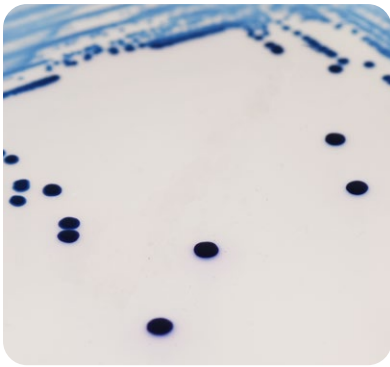
**FDA cleared.**



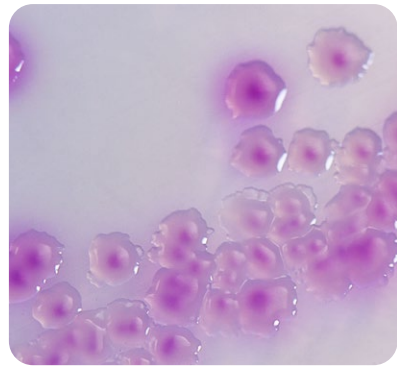
# Color Read-Out Interpretation

ESBL or Extended-Spectrum Beta-Lactamases refer to a group of enzymes produced by some species of bacteria that can mediate the organism's resistance to one or more broad spectrum penicillins and cephalosporin antibiotics.

This breakthrough culture media will help screen for ESBL producers quickly and more efficiently from stool specimens.



*Klebsiella pneumoniae*



*Escherichia coli*

\*HardyCHROM™ ESBL is not intended to diagnose ESBL infection nor to guide or monitor therapy for ESBL infections. Further testing using approved methods is necessary for identification, susceptibility testing, or epidemiological typing.

# HardyCHROM™ Group A Strep

15x100mm plate, 10/pk, **Cat. no. G337**

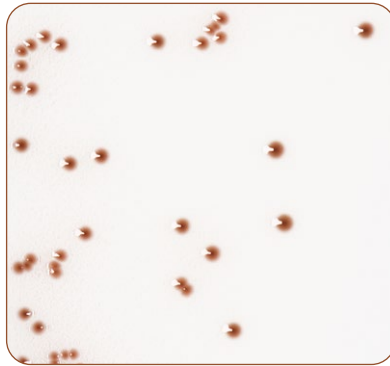
## Intended Use

This easy to read chromogenic medium is recommended for the selective cultivation and differential isolation of Group A *Streptococcus* (*S. pyogenes*). Colonies are identified based on color (red, red-brown, or red-orange colonies) among the other non-GAS bacteria in the complex throat flora (blue, clear or white colonies) after 24 hours of incubation.



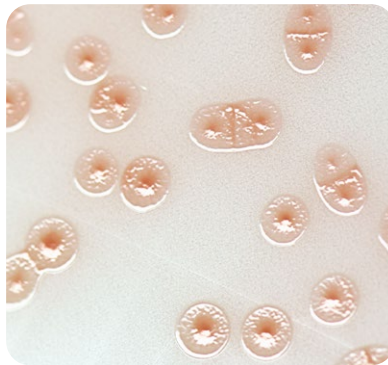
# Color Read-Out Interpretation

*Streptococcus pyogenes* red-brown colonies growing on HardyCHROM™ Group A Strep agar. Incubated in CO<sub>2</sub> for 24 hours at 35°C.



***Streptococcus pyogenes***

*Streptococcus pyogenes* (clinical strain) red-orange colonies growing on HardyCHROM™ Group A Strep agar. Incubated in CO<sub>2</sub> for 24 hours at 35°C.



***Streptococcus pyogenes* (clinical strain)**

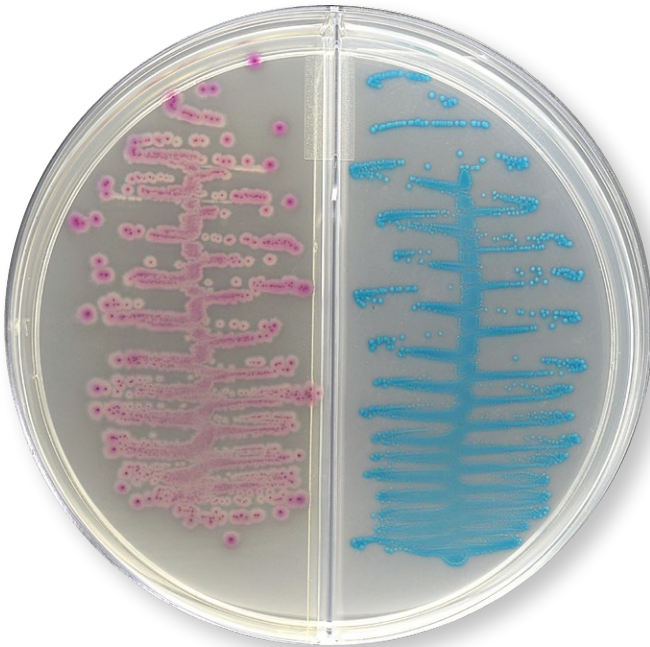
# HardyCHROM™ HurBi™ Biplate

15x100mm plate, 10/pk, **Cat. no. J100**

## Intended Use

**HardyCHROM™ HURBi™ Biplate** is a selective chromogenic medium recommended for the cultivation, differentiation and enumeration of various gram-negative and gram-positive bacteria, and yeast based on colony color and morphology. This biplate reduces the need for expensive automated ID cards.

Selective agents have been added to the each side of the biplate to select for growth of gram-positive organisms and yeast on one side and to select for growth of gram-negative organisms on the other side of the biplate. Distinct color reactions for each of the common urinary tract pathogens make it easier to detect mixed infections.



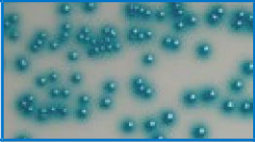








*Escherichia coli*

*Enterococcus faecalis*



# Color Read-Out Interpretation

<i>Staphylococcus aureus</i>	Opaque, cream to white colored colonies	
<i>Staphylococcus saprophyticus</i>	Opaque, pink colonies	
<i>Enterococcus</i> spp.	Teal to turquoise colonies	
<i>Candida albicans</i> , <i>Candida krusei</i> , <i>Candida tropicalis</i> , and <i>Candida glabrata</i>	Small, opaque, white, moist colonies ( <i>C. krusei</i> will be a rough colony)	
<i>E. coli</i>	Rose to magenta colonies with darker pink centers	
<i>Klebsiella</i> , <i>Enterobacter</i> , and <i>Serratia</i> spp.	Deep blue or dark indigo colonies	
<i>Citrobacter</i> spp.	Dark blue colonies often with a rose halo in the surrounding media	
<i>Proteus</i> , <i>Morganella</i> , and <i>Providencia</i> spp.	Clear to light yellow colonies with golden-orange halo in the surrounding media (some <i>Proteus vulgaris</i> colonies will be blue-green)	
<i>Pseudomonas</i> spp.	Colorless to light yellow-green colonies	

# HardyCHROM™ Listeria

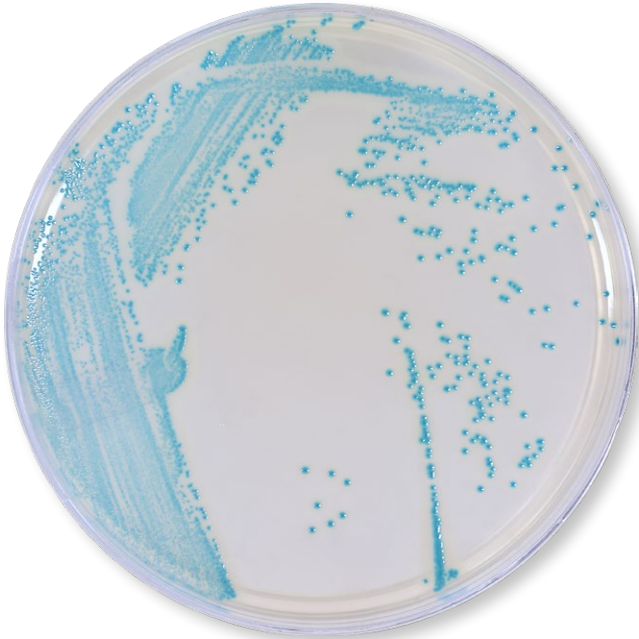
15x100mm plate, 10/pk, **Cat. no. G317**

## Intended Use

**HardyCHROM™ Listeria** is a chromogenic medium recommended for the selective isolation, differentiation, and enumeration of *Listeria monocytogenes* from food and environmental samples by colony color and appearance. *L. monocytogenes* colonies will turn turquoise with a distinctive white halo.

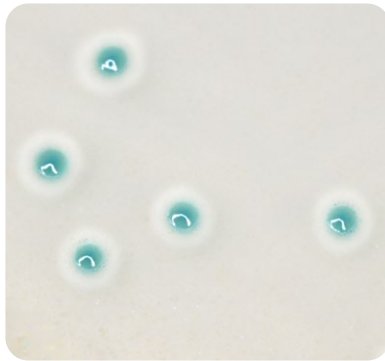
## Features

- Modified and improved ALOA formula.
- Differentiates *L. monocytogenes* and *L. ivanovii* from other *Listeria* species.
- *L. monocytogenes* colonies turn turquoise with a white halo for easy read-out.
- Results as early as 24 hours.



## Color Read-Out Interpretation

The presence of smooth, round, turquoise colonies 1-1.5mm in diameter surrounded by an opaque white halo is a presumptive positive test for the presence of *L. monocytogenes*/*L. ivanovii*. Further testing should be done to differentiate *L. monocytogenes* from *L. ivanovii* such as hemolysis, CAMP, rhamnose, xylose or other AOAC-RI approved methods. Colonies which appear colorless or turquoise without halos should be interpreted as negative for *L. monocytogenes*/*L. ivanovii*.



*Listeria monocytogenes*

# HardyCHROM™ MRSA

15x100mm plate, 10/pk, **Cat. no. G307**

## Intended Use

**HardyCHROM™ MRSA** is a selective and differential chromogenic medium that facilitates the isolation and identification of methicillin-resistant *Staphylococcus aureus* (MRSA) to aid in the prevention and control of MRSA infections in health care settings. The test is performed on anterior nares swabs from patients and healthcare workers to screen for MRSA colonization.

- Distinct color change
- Bright color development
- Compatible with automation
- Read-out at 24 hours

**FDA cleared.**



# Color Read-Out Interpretation

This chromogenic medium simplifies the detection of MRSA. MRSA produce pink to magenta colonies. Color development is bright, distinct and easy-to-read.

Methicillin-resistant *Staphylococcus aureus* colonies grown aerobically within 24 hours.



*Staphylococcus aureus*

\*HardyCHROM™ MRSA is not intended to diagnose MRSA infection nor to guide or monitor therapy for MRSA infections. Further testing using approved methods is necessary for susceptibility testing or epidemiological typing.

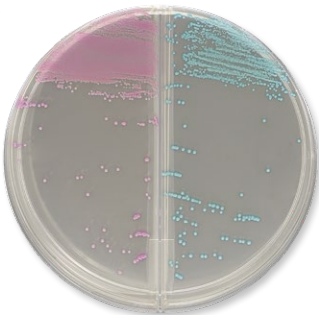
## Also Available

### HardyCHROM™ MRSA with Reduced Stacking Ring

For use in automated sample processing systems.  
15x100mm plate, 10/pk, **Cat. no. GA307**

### LokTight™ HardyCHROM™ MRSA

15x65mm contact plate (for environmental screening),  
10/pk, **Cat. no. P14**



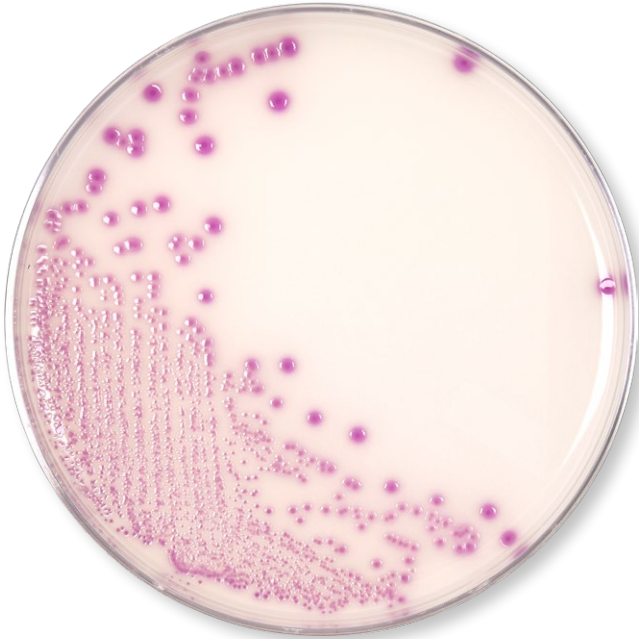
**HardyCHROM™ MRSA/Staph aureus**  
15x100mm biplate, 10/pk, **Cat. no. J35**

# HardyCHROM™ O157

15x100mm plate, 10/pk, **Cat. no. G305**

## Intended Use

**HardyCHROM™ O157** is a selective and differential medium recommended for the isolation of enterohemorrhagic *E. coli* O157 from food and environmental sources. Chromogenic substances in the media facilitate detection by colony color.



# Color Read-Out Interpretation

*E. coli* O157 produce purple-pink colored colonies on the plate. Organisms other than *E. coli* O157 will be inhibited, or appear as blue colonies.



*Escherichia coli*

# HardyCHROM™

## Sakazakii

15x100mm plate, 10/pk, **Cat. no. G315**

### Intended Use

**HardyCHROM™ Sakazakii** is a chromogenic medium recommended for the selective isolation and differentiation of *Cronobacter (Enterobacter) sakazakii* from other members of the Enterobacterales family based on colony color.

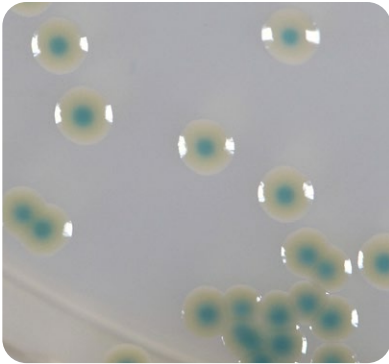
*C. sakazakii* is a gram-negative, rod-shaped opportunistic pathogen that is associated with a rare but life-threatening form of meningitis and necrotizing enterocolitis in neonates. The source of infection has been linked to the ingestion of powdered milk-based infant formula intrinsically contaminated by *C. sakazakii*. The organism is both thermotolerant and resistant to desiccation, which enables it to survive manufacturing processes.





## Color Read-Out Interpretation

- *C. sakazakii* produces smooth, blue-green colonies on **HardyCHROM™ Sakazakii** as a result of unique bacterial enzyme interactions with chromogenic substances.
- Other members of the family Enterobacterales will produce white or colorless colonies with or without black centers.
- All gram-positive bacteria and yeast will be inhibited on this medium.



*C. sakazakii*



*Salmonella* spp.

# HardyCHROM™

## Salmonella

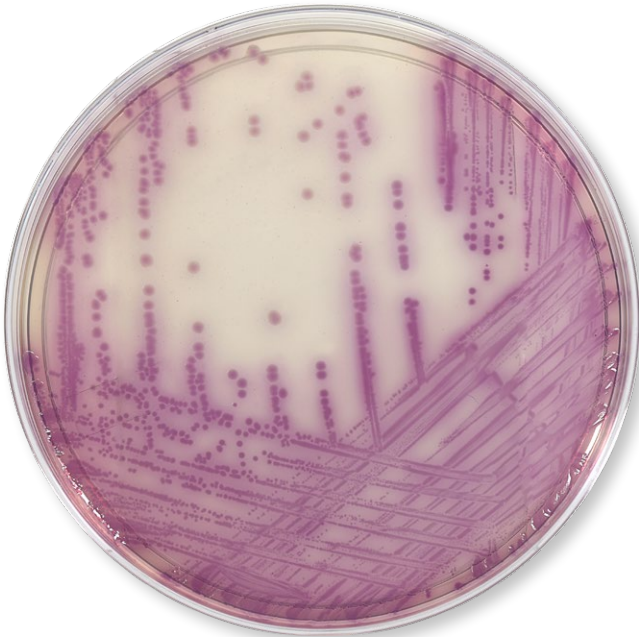
15x100mm plate, 10/pk, **Cat. no. G309**

### Intended Use

**HardyCHROM™ Salmonella** is a differential medium that facilitates the isolation and differentiation of *Salmonella* spp. from other members of the Enterobacteriales.

This medium utilizes the ability of *Salmonella* spp. to produce acid from propylene glycol. This characteristic is used in conjunction with a chromogenic indicator to differentiate *Salmonella* spp. from *Proteus* spp. and other Enterobacteriales.

*Salmonella* spp., including *S. Typhi* and *S. Paratyphi A*, produce pink to magenta colonies. Members of the Enterobacteriales produce blue, blue-green, white, or colorless colonies, while Gram-positive bacteria and non-glucose fermenting bacteria will be inhibited.

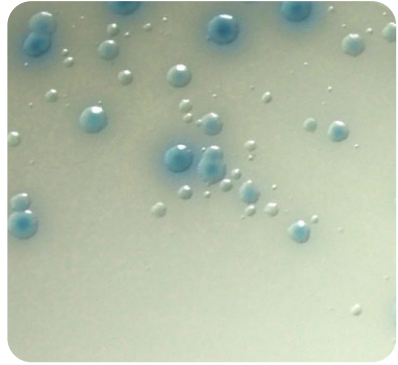


# Color Read-Out Interpretation

*Salmonella* spp., including *S. Typhi* and *S. Paratyphi A*, produce magenta colored colonies. Other members of the Enterobacterales (if present) produce blue, blue-green, white, or colorless colonies. Gram-positive bacteria and non-glucose fermenting bacteria will be inhibited.



*Salmonella enterica*



*Escherichia coli*

## Also Available



**HardyCHROM™ Salmonella/XLT-4  
(Xylose-Lysine-Tergitol 4)**

15x100mm biplate, 10/pk, **Cat. no. J37**

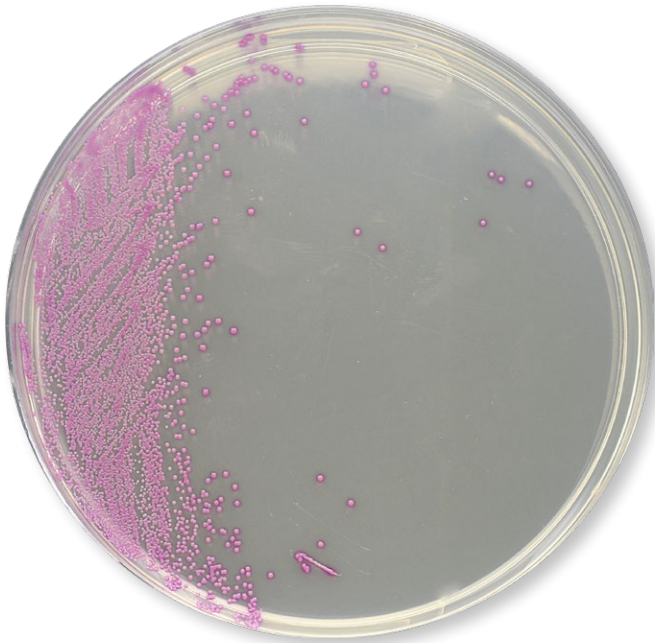
# HardyCHROM™ Staph aureus

15x100mm plate, 10/pk, **Cat. no. G311**

## Intended Use

**HardyCHROM™ Staph aureus** allows for the rapid and reliable detection of *Staphylococcus aureus*. This medium contains a special chromogenic mix that allows for the isolation and differentiation of *Staphylococcus* spp.

*Staphylococcus aureus* has been implicated in nosocomial infections and food poisoning outbreaks. Many *S. aureus* strains produce enterotoxins that cause food poisoning when ingested. Food poisoning, bacteremia, pneumonia, toxic shock syndrome, and meningitis are some of the more serious infections that can be caused by *S. aureus*.



## Color Read-Out Interpretation

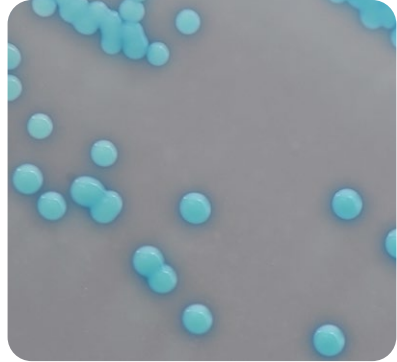
*Staphylococcus aureus* can be identified as smooth, deep pink to fuchsia colored colonies on the plate.

Other organisms may appear as colorless, blue, turquoise, or cream colonies, or will be inhibited. *Staphylococcus epidermidis* will be partially to completely inhibited.

*Staphylococcus saprophyticus* will appear as turquoise colored colonies. Some gram-positive organisms other than *S. aureus* may appear as blue colonies.



***Staphylococcus aureus***



***Staphylococcus saprophyticus***

# HardyCHROM™ SS NoPRO™

15x100mm plate, 10/pk, **Cat. no. G327**

## Intended Use





**HardyCHROM™ SS NoPRO** (no-*Proteus*) agar is recommended for the selective isolation and differentiation of *Salmonella* and *Shigella* spp. from stool. **HardyCHROM™ SS NoPRO** agar is intended as a primary screening tool to distinguish *Salmonella* and *Shigella* spp. from non-pathogenic enteric bacteria based on colony color, while inhibiting the growth and characteristic swarming of *Proteus* spp. The patented enhanced inhibition of *Proteus* reduces the expense involved in working up non-pathogens that could mimic enteric pathogens. Further species confirmation of suspect colonies via conventional or automated methods is recommended. This chromogenic medium for *Salmonella* and *Shigella* is both sensitive and specific without needless work-ups for no-*Proteus*.



# Color Read-Out Interpretation

Most *Salmonella* serovar will produce H<sub>2</sub>S and the colonies will have a large black center with clear perimeter. *Salmonella* that do not produce H<sub>2</sub>S and *Shigella* spp. produce teal blue colored colonies.

*S. dysenteriae* may produce small, colorless colonies. Further species confirmation of suspect colonies via conventional or automated method is recommended. Teal color development may not be apparent at 18 hours of incubation in rare instances. Plates should be incubated a full 24 hours before being discarded as negative. Other members of the Enterobacterales, if present, will produce:

H <sub>2</sub> S producing <i>Salmonella</i> spp.	Colonies with large black centers with clear perimeter	
<i>Shigella</i> spp. and non-H <sub>2</sub> S producing <i>Salmonella</i> spp.	Teal blue colored colonies	
<i>Escherichia</i> spp., <i>Klebsiella</i> spp., <i>Citrobacter</i> spp., <i>Yersinia</i> spp., <i>Enterobacter</i> spp.	Pink colonies, with or without purple centers	
<i>Hafnia alvei</i> and inactive <i>E. coli</i> (Alkaescens - Dispar)	Small, blue colonies	



***Shigella sonnei***



***Salmonella***

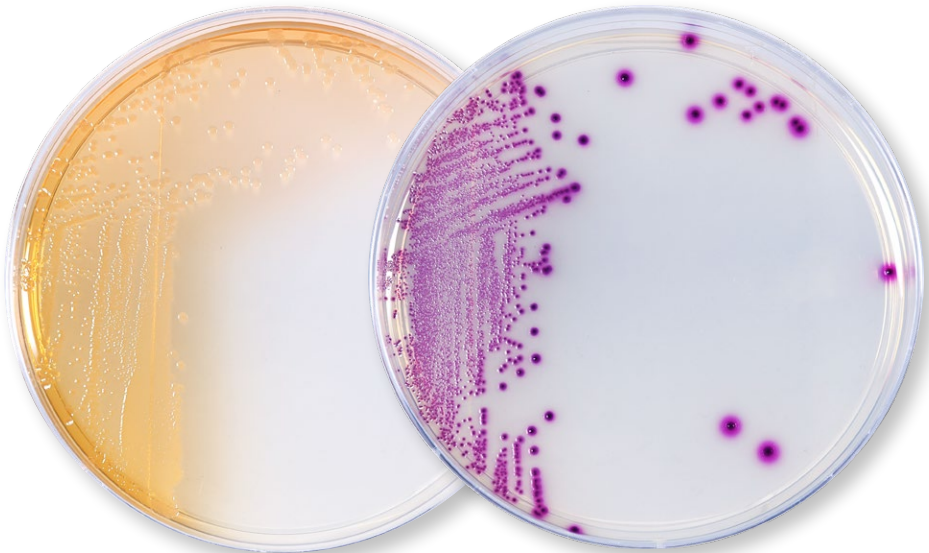
# HardyCHROM™ UTI

15x100mm plate, 10/pk, **Cat. no. G313**

## Intended Use

**HardyCHROM™ UTI** is a chromogenic culture medium that facilitates the isolation and differentiation of urinary tract pathogens. The development of various colors, due to chromogenic substances in the medium, allows for the differentiation of multiple microorganisms from the primary set-up of a urine specimen.

There are a number of organisms routinely isolated from urinary tract infections (UTI). Most UTIs are caused by *Escherichia coli* alone, or in combination with other organisms. The most frequently isolated species produce characteristic enzymes. Thus, **HardyCHROM™ UTI** can be used for the cultivation and differentiation of various groups of organisms with only a minimum number of confirmatory tests.



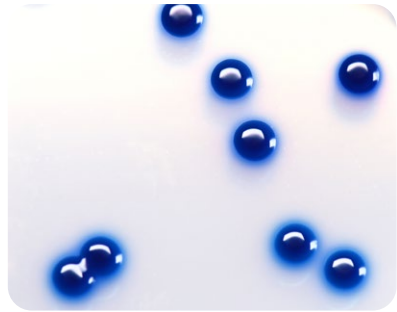


# Color Read-Out Interpretation

- *E. coli* produces large magenta colonies (confirmatory, no further testing required).
- *Enterococcus* spp. produces small, turquoise-colored colonies. No further testing is needed.
- *Pseudomonas* spp. produce colorless to light yellow/green, translucent colonies.
- *Klebsiella*, *Enterobacter*, and *Serratia* spp. produce large, deep blue colonies.
- *Staphylococcus saprophyticus* produces opaque, pink colonies.
- *Candida* spp. produces small, white colonies.
- *Proteus*, *Morganella*, and *Providencia* spp. produce clear to light yellow colonies with a diffuse golden-orange halo in the medium.
- *Staphylococcus aureus* produces opaque, white-colored colonies.
- *Citrobacter* spp. produce dark blue colonies, often with a rose halo in the surrounding media.

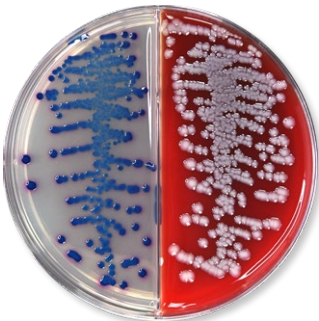


*Pseudomonas aeruginosa*



*Klebsiella pneumoniae*

## Also Available



**HardyCHROM™ UTI/Blood Agar**  
15x100mm biplate, 10/pk, **Cat. no. J119**

# HardyCHROM™ Vibrio

15x100mm plate, 10/pk, **Cat. no. G319**

## Intended Use

**HardyCHROM™ Vibrio** is recommended for use as a selective and differential growth medium for the cultivation, isolation, and differentiation of *Vibrio* spp. from food and environmental samples.

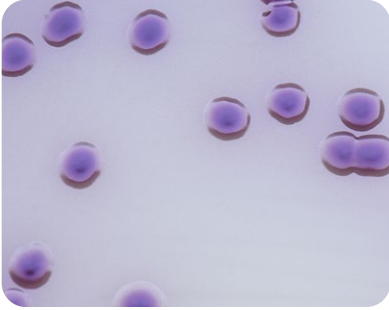
**HardyCHROM™ Vibrio** differentiates *V. cholerae*, *V. parahaemolyticus*, and *V. vulnificus* from other *Vibrio* species based on colony color and fluorescence.

The shellfish pathogen *V. parahaemolyticus* is differentiated from other species such as *V. alginolyticus* by its teal coloration. The deadly pathogens, *V. cholerae* and *V. vulnificus*, are differentiated from other species by their magenta coloration, and from each other by the fluorescence of *V. vulnificus* under UV light.

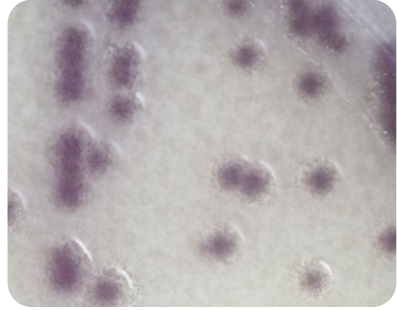


# Color Read-Out Interpretation

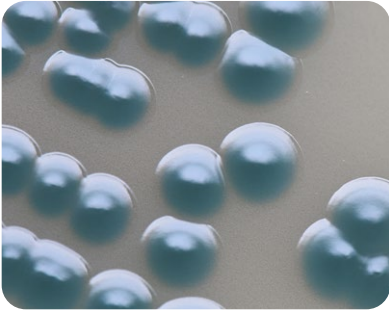
*Vibrio parahaemolyticus* produces colonies that are turquoise. *Vibrio cholerae* produces colonies that are magenta to purple and do not fluoresce under UV light (365nm). *Vibrio vulnificus* produces colonies that are magenta and do fluoresce under UV light (365nm). *Vibrio alginolyticus* and other *Vibrio* spp. produce colonies that are colorless to olive. *Enterococcus faecalis* may grow on HardyCHROM™ *Vibrio*, but colonies appear sky blue.



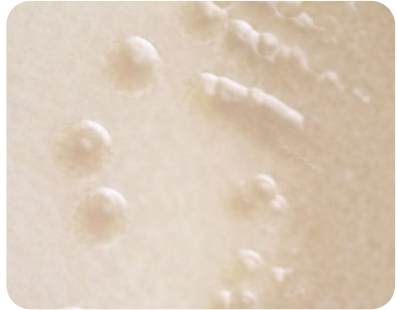
*Vibrio cholerae*



*Vibrio vulnificus*



*Vibrio parahaemolyticus*



*Vibrio alginolyticus*

## Dehydrated Culture Media Also Available



### CRITERION™ HardyCHROM™ *Vibrio*

Mylar® zip-bag to make 2L, **Cat. no. C9010**

500gm wide-mouth bottle, **Cat. no. C9011**

2kg bucket, **Cat. no. C9012**

10kg bucket, **Cat. no. C9013**



# HARDY DIAGNOSTICS

*A Culture of Service™*

**40**  
MORE THAN



Years of  
Bringing You  
A Culture of Service



**100%**  
Employee Owned

ESTABLISHED  
**1980**

MADE IN  
**USA**



Hardy Diagnostics  
donates 1% of each  
sale to charity.



**bsi**  
ISO  
13485  
Medical Devices  
Quality  
Management

FM 572526

Hardy Diagnostics has a Quality Management System that is certified to ISO 13485 and is a FDA licensed medical device manufacturer.

## Headquarters

1430 West McCoy Lane  
Santa Maria, CA 93455  
800.266.2222  
Sales@HardyDiagnostics.com  
HardyDiagnostics.com

## Distribution Centers

Santa Maria, California  
Olympia, Washington  
Salt Lake City, Utah  
Phoenix, Arizona  
Dallas, Texas  
Springboro, Ohio  
Lake City, Florida  
Albany, New York  
Raleigh, North Carolina

