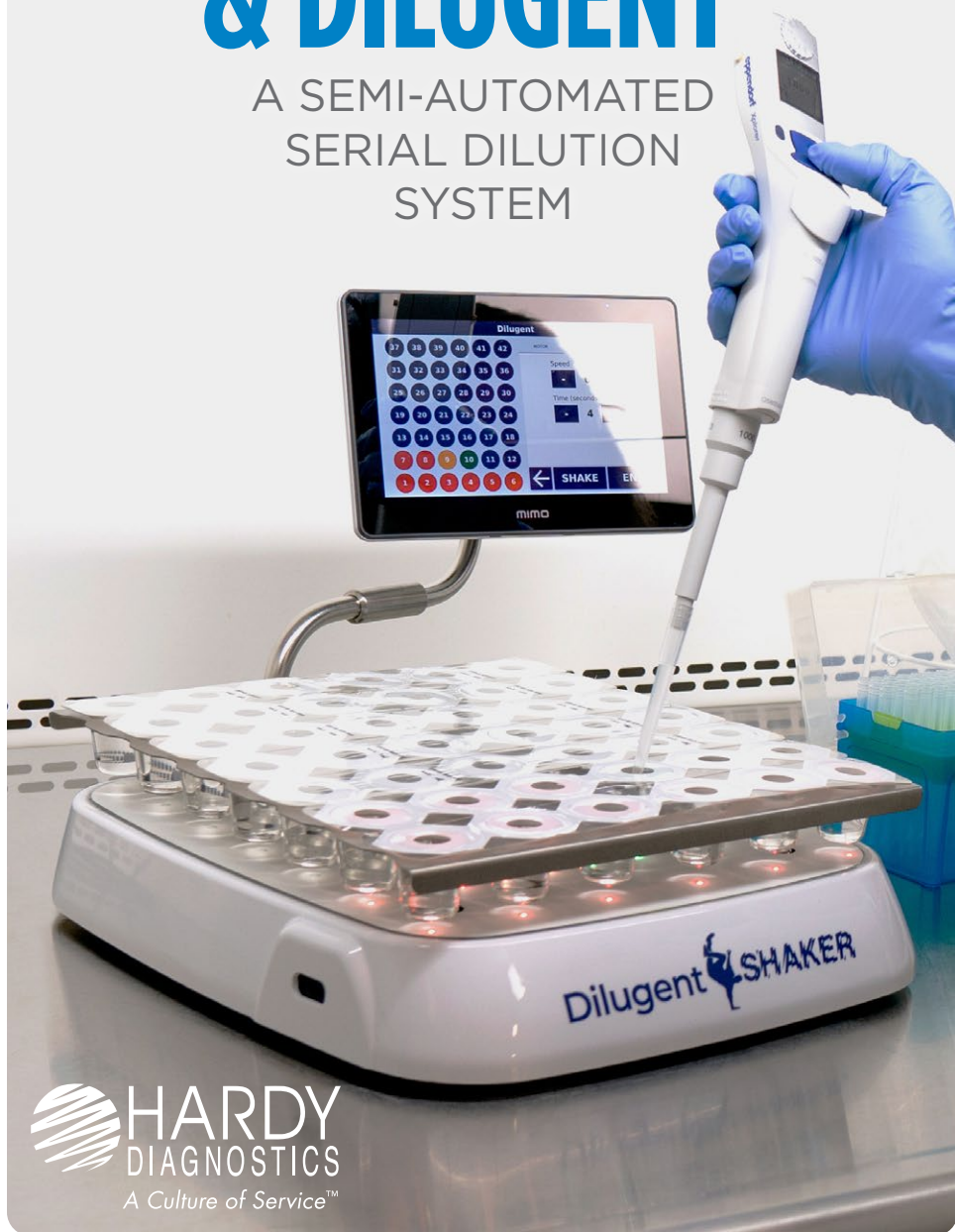


# DILUCUP<sup>®</sup> ELEGANCE & DILUGENT<sup>®</sup>

A SEMI-AUTOMATED  
SERIAL DILUTION  
SYSTEM



# DILUCUP® ELEGANCE & DILUGENT

A SEMI-AUTOMATED SERIAL DILUTION SYSTEM

## Contents

- |   |                         |   |                                |
|---|-------------------------|---|--------------------------------|
| 3 | ASO (Anti-Streptolysin) | 4 | Rheumatoid Arthritis           |
| 3 | <i>Cryptococcus</i>     | 5 | Rubella                        |
| 3 | <i>E. coli</i> O157     | 5 | <i>Staphylococcus</i> and MRSA |
| 4 | Mononucleosis           | 6 | Strep Grouping                 |

**HARDY DIAGNOSTICS** is the  
**EXCLUSIVE DISTRIBUTOR** in the **UNITED  
STATES** for the **REVOLUTIONARY  
ELEGANCE™ SYSTEM.**

## INNOVATION

The only system to offer both traceability and automation.



## COST SAVING

It would take 72 pallets of a competitor's product to match the number of testing units available with only 5 pallets of Dilucup™.



## COMPACT SIZE

Machine takes up a very small bench top footprint.

Dimensions: 38cm x 29.5cm x 5cm



## SAVE TIME

Reduces technician labor time and cost; allows them to reallocate saved time to other activities.



## EASY-TO-USE

When comparing the number of touches required, competitor vials require 7 touches vs. 3 touches for Dilucup™.



## DEPENDABLE

The Dilucup™ System ensures consistent results, even when used by different technicians.



## PREVENT INJURIES

The Diligent® Shaker eliminates repetitive motion concerns; great from an employee and Human Resources perspective.



A woman with long brown hair and gold-rimmed glasses is smiling at the camera. She is wearing a white lab coat. In the background, there is a laboratory setting with a white wall and some equipment. The text 'Introducing the Diligent® Shaker' is overlaid on the right side of the image.

# Introducing the Diligent® Shaker

**Our newest evolution in serial dilution technology brings automation and traceability into your serial dilution process like never before!**

The **large 7" touch screen** allows the user to clearly and easily understand where they are in their dilution series, minimizing user error. The new Diligent® Shaker also allows the lab to **create user templates**, either for each tech or for the different testing programs. With the development of the Diligent® Shaker line of laboratory quality instruments, we can even **associate your process to your LIMS system** for the ultimate step forward in traceability.

**Reduce variation from tech to tech and standardize your serial dilution results!**



Features	Diligent® Shaker Light	Diligent® Shaker Standard	Diligent® Shaker PRO
Supports foot switch (not included)	●	●	●
Selectable working direction (from left to right)	●	●	●
Up to 10 templates can be stored	●	●	●
Visual "service required" information	●	●	●
Service menu	●	●	●
Error Codes	●	●	●
Can be configured to support bar code readers		●	●
Active well displayed on touch screen		●	●
Sample identification		●	●
User identification		●	●
Dilucup batch identification		●	●
Export USB		●	●
Advanced programming			●
Full Traceability of Operations - Export to connected unit			●
Step ahead without shaking for doing replicates			●
Customizable interface colors			●
Customizable LED colors			●
Full connectivity (LIMS interface not included)			●

**Schedule  
a demo for  
your lab  
today!**

# Dilugent® Shaker

by LabRobot

## Precision and speed at your fingertips! The first device for easy, safe, and traceable serial dilution processing!

The Dilugent® Shaker uses orbital rotation to ensure each dilution is thoroughly vortexed. It is activated by either an hands-free optical sensor or the optional foot pedal. The 42 LED indicators light each cup, letting you easily see what dilution well you are in.

### Features:

- Dimensions: 38cm x 29.5cm x 5cm
- Export data to USB
- Full connectivity to LIMS (Dilugent® Pro only)
- Can create and store testing templates, ensuring standardization of method
- Bar code reading (Dilugent® and Dilugent® Pro only)
- Able to record sample ID and user ID (Dilugent® and Dilugent® Pro only)

#### Dilugent® Shaker Light

Cat. no.

All of the ergonomic design improvements with a lighter software package.

40DGT84LT

#### Dilugent® Shaker Standard Version

Cat. no.

Our standard version includes functions that allow the user to track data using a USB memory stick.

40DGT84SD

#### Dilugent® Shaker Pro

Cat. no.

This format makes it possible to connect LIMS and advanced programming. Especially for those who work with duplicates or triplicates or have other traceability needs.

40DGT84PO

## Easy as 1, 2, 3!

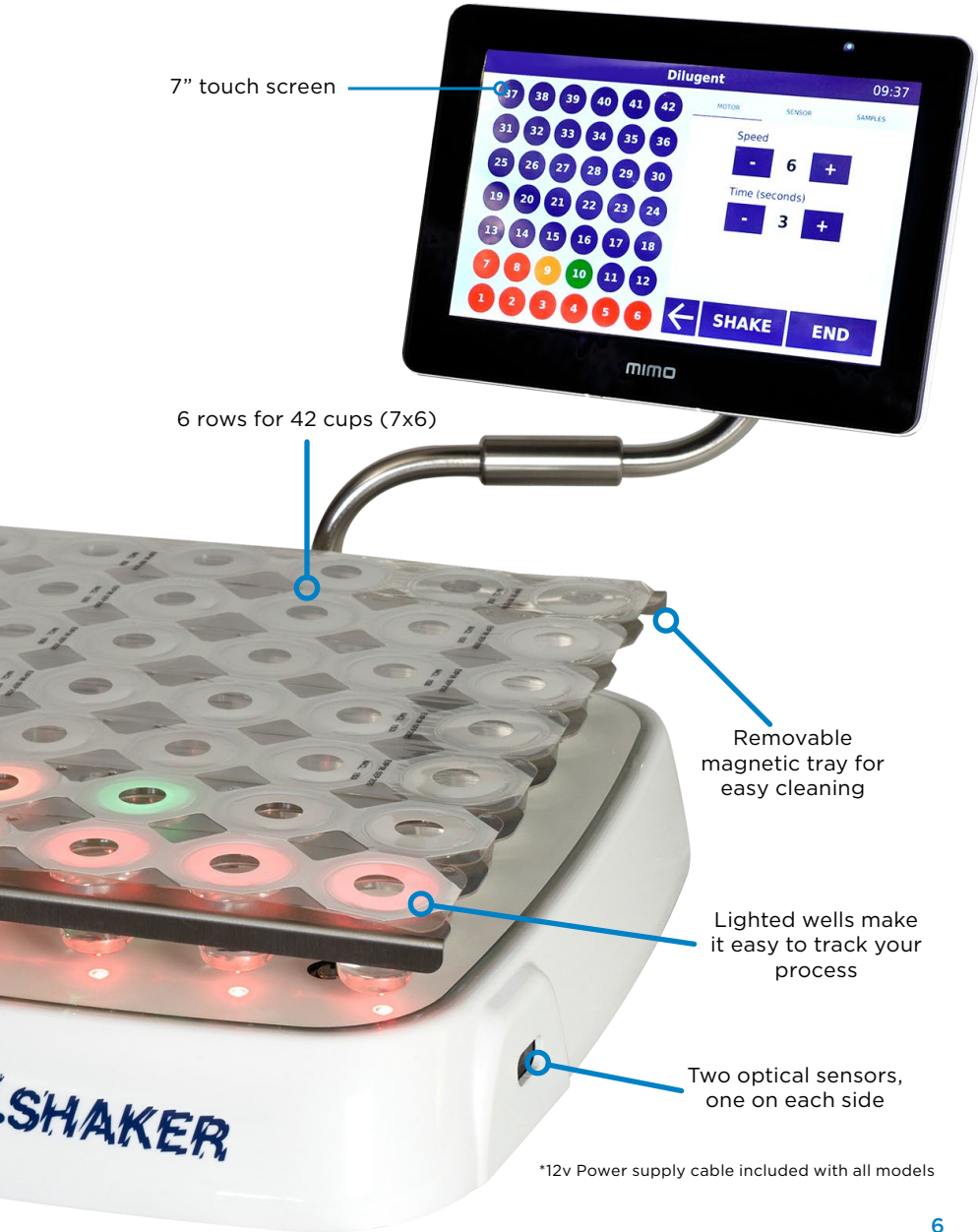
**1.** Simply add 1ml sample to the first Dilucup® Elegance.

**2.** Start the shaker by waving your hand in front of the motion sensor. When the Dilugent® Shaker stops, the next dilution is ready.

**3.** Collect 1ml from the first cup and release it into the second cup and start the shaker again. Continue this until the final dilution is reached.



Bring your serial dilution process into the future with the first traceable system.



7" touch screen

6 rows for 42 cups (7x6)

Removable magnetic tray for easy cleaning

Lighted wells make it easy to track your process

Two optical sensors, one on each side

\*12v Power supply cable included with all models

# Diligent® Shaker Accessories



## Scanner

Optional bar code scanner.  
Each

40SC04

## Footswitch

Optional foot switch, for hands-free operation of the Diligent® Shaker.

Each

40FS02



## Transport Case for Diligent® Shaker

A durable, shippable container with custom designed foam inserts meant to protect Diligent® Shaker units during transport. Features two wheels and trolley handle.

Each

40TC6700



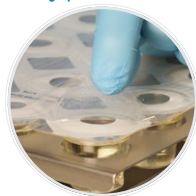
# Dilucup® Elegance

## Serial Dilution System

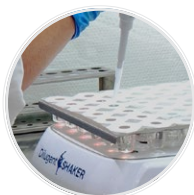
Dilucup™ saves time and money compared to preparing your own dilution vials!



Easy peel-off film



Sterile,  
pre-filled diluent



Compact for  
efficient storage



### Dilugent® Shaker Pro

Cat. no.

Max Recovery Diluent, dilution blank, 9ml fill, ready-to-use cups, 672 (2 x 8 x 42) total cups with 6 cups/row

40DEM RD6

### Dilugent® Shaker Pro

Cat. no.

Dilucup™, Buffered Peptone Water, dilution blank, 9ml fill, ready-to-use cups, 672 (2 x 8 x 42) total cups with 6 cups/row

40DEBPW6

### Dilucup® Elegance Butterfield's Phosphate Buffer

Cat. no.

copy

40DEBFD6

# CompactDry™ Plates



**Total Count**  
240/pk 54081



**E. coli and Coliforms**  
240/pk 54082



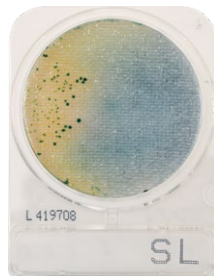
**Total Count Rapid**  
240/pk 54088



**Staphylococcus aureus**  
240/pk 54086



**Enterobacteriaceae**  
100/pk ETB100



**Salmonella**  
240/pk 54085



**Pseudomonas aeruginosa**  
100/pk PA100



**Bacillus cereus**  
100/pk XBC100



**Listeria**  
100/pk LS100



**Coliforms**  
240/pk 54053



**Yeast and Mold**  
240/pk 54083



**Yeast and Mold Rapid**  
240/pk 54084

# Pipettes

## The most sophisticated and ergonomic pipettes ever!

### Picus® Electronic Pipette

- Uniquely lightweight and compact design maximizes user convenience
- Conveniently located, one-touch operating-button and feather-light electronic tip ejection help minimize muscle strain
- Electronic piston control and brake ensure accurate, user-independent pipetting results
- Unique plate tracker increases reliability in microwell plate dispensing
- The comprehensive selection of pipetting modes lets you perform a number of different liquid handling tasks quickly and easily
- Specifications: 1 channel, 0.5µl-10ml



Each

735111

### Tacta® Mechanical Pipette

- Optijet soft tip ejection loosens tips smoothly and in a controlled way
- Optilock's dual-function volume locking prevents accidental volume changes
- Calibration adjustment ensures accurate results, also in cases where factory calibration does not apply, for example when pipetting viscous liquids
- Ergonomic design for comfortable pipetting
- Low pipetting cycle forces to reduce WRULD (Work Related Upper Limb Disorder) risk
- Precise results due to ergonomic design
- Optiload, the spring-loaded tip cone, guarantees perfect tip loading and sealing with minimum force
- Quick and easy cleaning of the pipette with only three removable parts • Four-digit volume display helps to set exact volumes
- Specifications: 1 channel, 1µl-10ml



Each

LH729090

# Pipette Tips

### Globe Scientific Universal Pipette Tips

Tips by Globe Scientific fit all of the commonly used pipettors; such as Sartorius®, Centaur®, Pipetman®, Eppendorf®, MLA®, Ames®, Gilson®, Oxford®, Oxford® Slimline®, and Clay Adams Selectapette. Made from prime virgin polypropylene, tips provide high accuracy and reproducibility for effective laboratory testing. The tips are available in bulk or autoclavable racks.

- Specifications: Blue, 101-1,000µl

1,000/case

151146





# HARDY DIAGNOSTICS

*A Culture of Service™*

**40** MORE THAN  
Years of  
Bringing You  
A Culture of Service

 **100%**  
Employee Owned

ESTABLISHED  
**1980**

MADE IN  
**USA**

 Hardy Diagnostics  
donates 1% of net  
profits to charity.

 **bsi**  
ISO  
13485  
Medical Devices  
Quality  
Management  
FM 572526

Hardy Diagnostics has a Quality Management System that is certified to ISO 13485 and is a FDA licensed medical device manufacturer.

#### Headquarters

1430 West McCoy Lane  
Santa Maria, CA 93455  
800.266.2222  
Sales@HardyDiagnostics.com  
HardyDiagnostics.com

#### Distribution Centers

Santa Maria, California  
Olympia, Washington  
Salt Lake City, Utah  
Phoenix, Arizona  
Dallas, Texas  
Des Moines, Iowa  
Springboro, Ohio  
Lake City, Florida  
Albany, New York  
Raleigh, North Carolina



**Contract Holder**  
Contract # 47QSWA22D0077