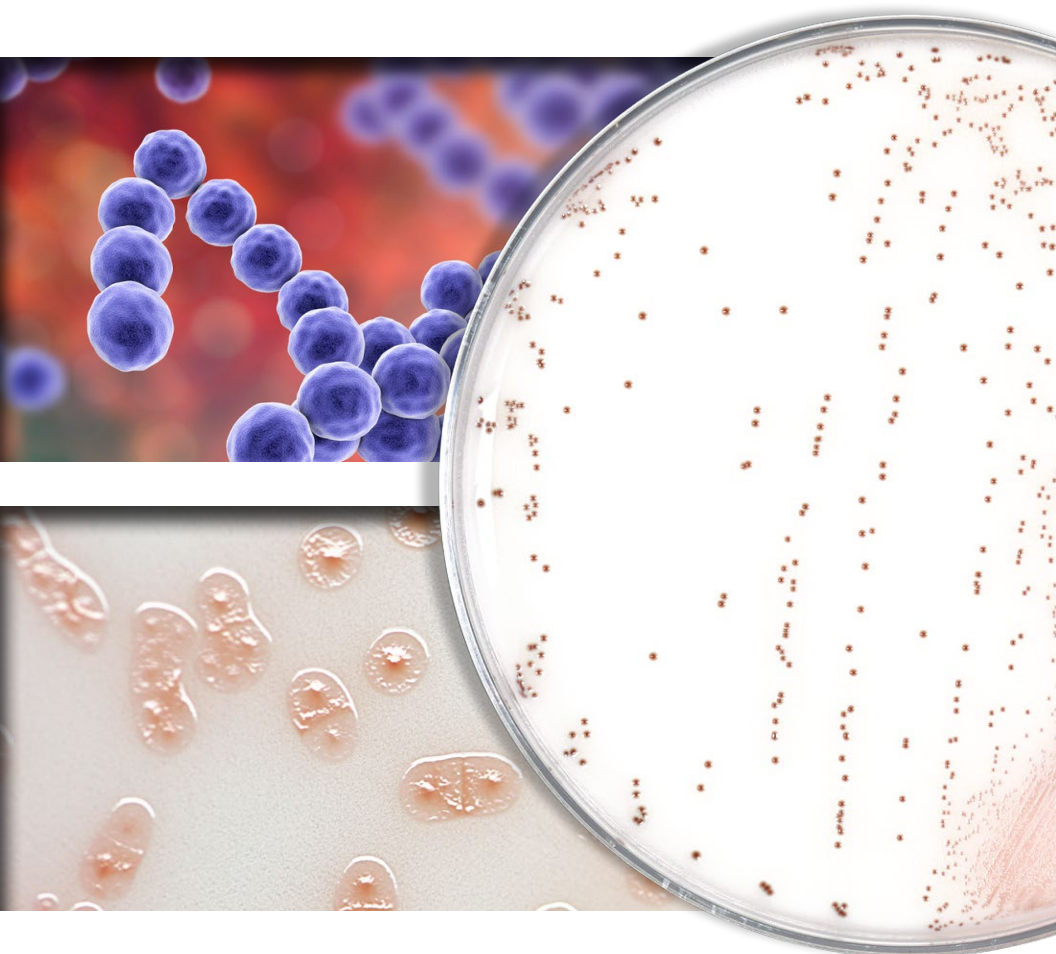


Hardy **CHROM**TM Group A Strep Agar



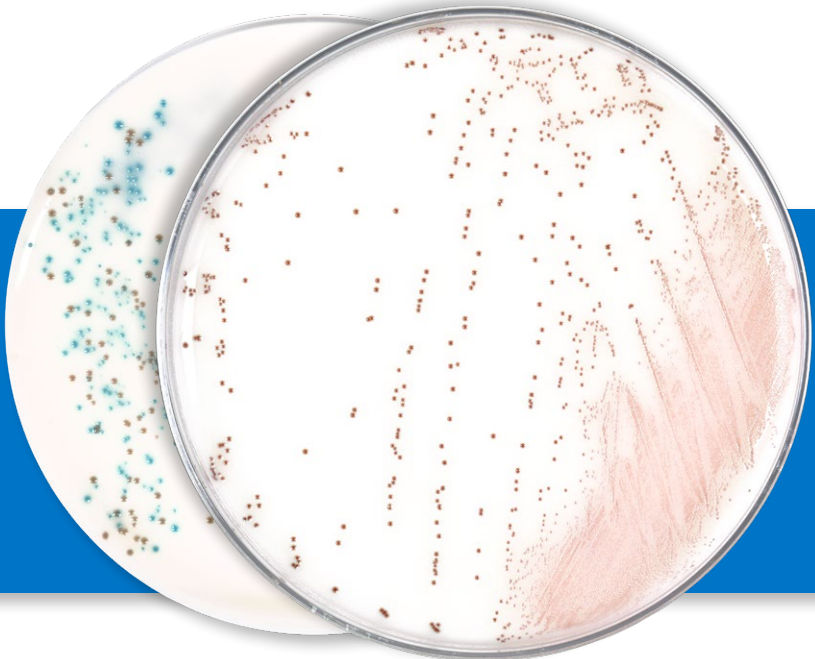
HardyCHROM™ Group A Strep Agar

Color read-out on a white background in just 24 hours.

We are making identification easy with the release of the Hardy Diagnostics HardyCHROM™ Group A Strep Agar. This easy-to-read chromogenic medium is recommended for the selective cultivation and differential isolation of Group A *Streptococcus* (*S. pyogenes*). Colonies are identified based on colony color (red, red-brown, or red-orange colonies) among the other non-GAS bacteria in the complex throat flora (blue, clear or white colonies) after 24 hours of incubation.

15x100mm plate, 10/pk.....G337

Reduced stacking ring,
15x100mm plate, 10/pk.....GA337

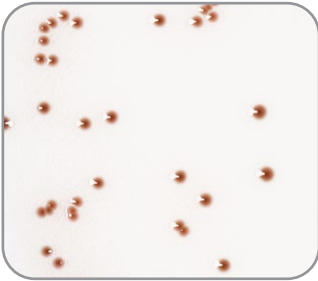


GROUP A STREP infections can occur any time during the year. However, infections are more common in the United States in certain seasons:

- Strep throat and scarlet fever are more common in the winter and spring.
- Impetigo is more common in the summer.

Anyone can get a **GROUP A STREP** infection, but some infections are more common in certain age groups:

- Strep throat and scarlet fever are most common in children between the ages of 5 and 15 years.
- Impetigo is most common in children between the ages of 2 and 5 years. (source CDC)



Streptococcus pyogenes (ATCC® 19615)
red-brown colonies growing on
HardyCHROM™ Group A Strep Agar.
Incubated in CO₂ for 24 hours at 35°C.



Streptococcus pyogenes (clinical strain)
red-orange colonies growing on
HardyCHROM™ Group A Strep Agar.
Incubated in CO₂ for 24 hours at 35°C.

Did you know that Hardy Diagnostics offers you free blok-boxes for all your light sensitive media? Just ask us if you would like a free blok-box added to your order. One box holds a sleeve of ten Petri plates.





FM 572526

Headquarters

1430 West McCoy Lane
Santa Maria, CA 93455
800.266.2222

Sales@HardyDiagnostics.com
HardyDiagnostics.com

Distribution Centers

Santa Maria, California
Olympia, Washington
Salt Lake City, Utah
Phoenix, Arizona
Dallas, Texas
Springboro, Ohio
Lake City, Florida
Albany, New York
Raleigh, North Carolina



Hardy Diagnostics adheres to cGMP, is licensed by the FDA as a medical device manufacturer, and its quality management system is ISO 13485 certified.



Copyright © 2023 Hardy Diagnostics

