

Hardy**CHROM**<sup>™</sup>

# Candida + auris

Now You Can Know For Sure



 **HARDY**  
DIAGNOSTICS  
*A Culture of Service<sup>™</sup>*

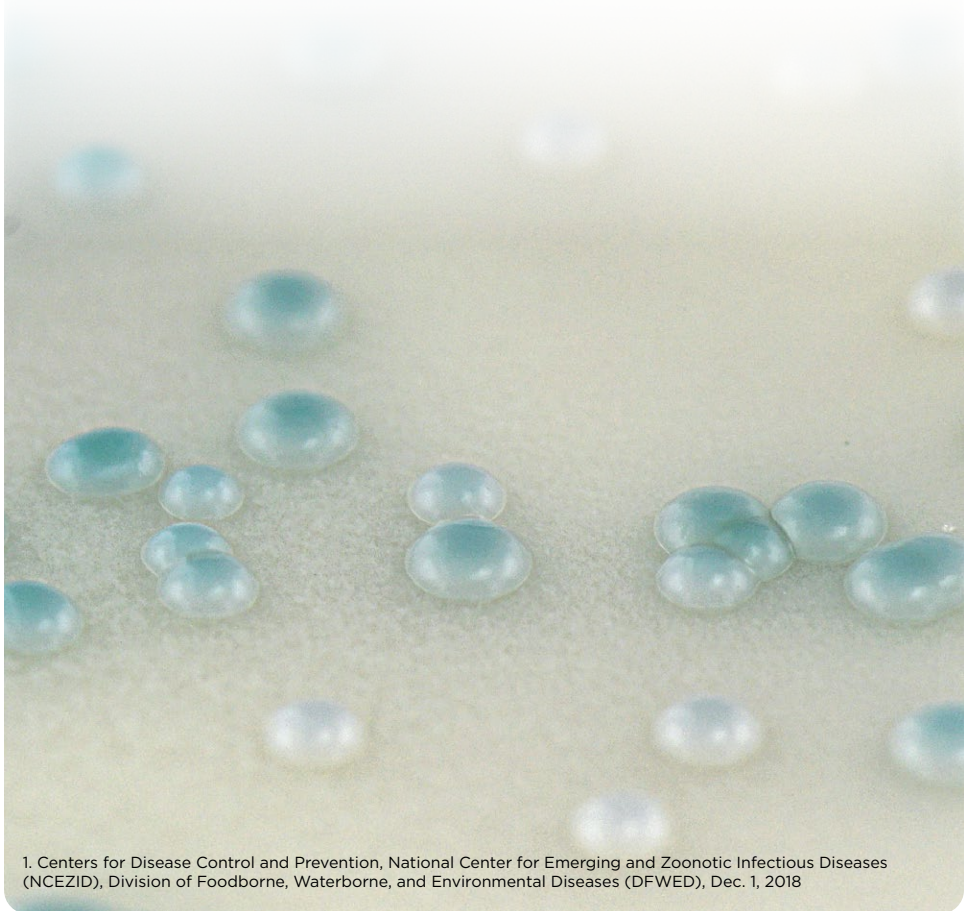




# Emerging Fungus

**Candida auris (C. auris)** is an emerging fungus, which has caused global concern and has been classified as an Urgent Threat by the Centers for Disease Control and Prevention (CDC). **C. auris** is resistant to most first-line antifungal medications and spreads easily through direct contact as well as contact with contaminated surfaces. **C. auris** is predominant in patients with underlying medical issues or weakened immune systems.

**C. auris** can cause bloodstream infections and even death among patients with serious underlying medical factors. In fact, more than one out of three patients with an invasive **C. auris** infection affecting the blood, heart or brain are likely to die.<sup>1</sup>

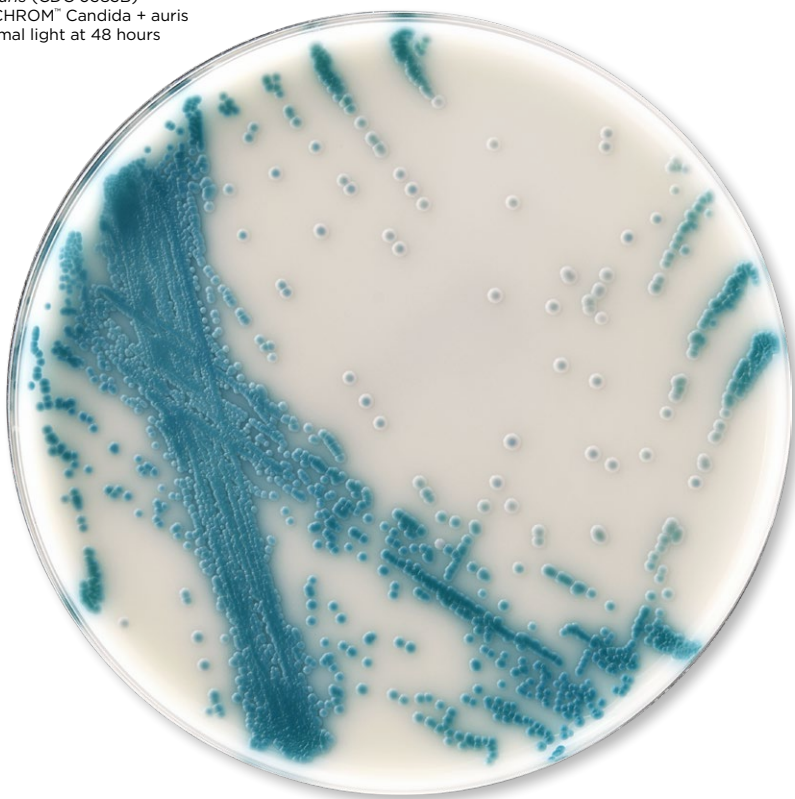


1. Centers for Disease Control and Prevention, National Center for Emerging and Zoonotic Infectious Diseases (NCEZID), Division of Foodborne, Waterborne, and Environmental Diseases (DFWED), Dec. 1, 2018

## Intended Use

**HardyCHROM™ Candida + auris** is recommended for the selective isolation and differential identification of *Candida* species. Colonies of ***C. auris*** will appear white with a characteristic teal to teal-green “bullseye” center and show a unique fluorogenic reaction under UV light. ***C. auris*** is unique amongst other *Candida* species because it causes outbreaks and is resistant to nearly all antifungal drugs; and is difficult to identify thus can be misidentified as other species of yeasts. This medium will also identify *C. tropicalis*, *C. glabrata*, *C. albicans*, and *C. krusei*.

*Candida auris* (CDC 0385B)  
on HardyCHROM™ **Candida + auris**  
under normal light at 48 hours

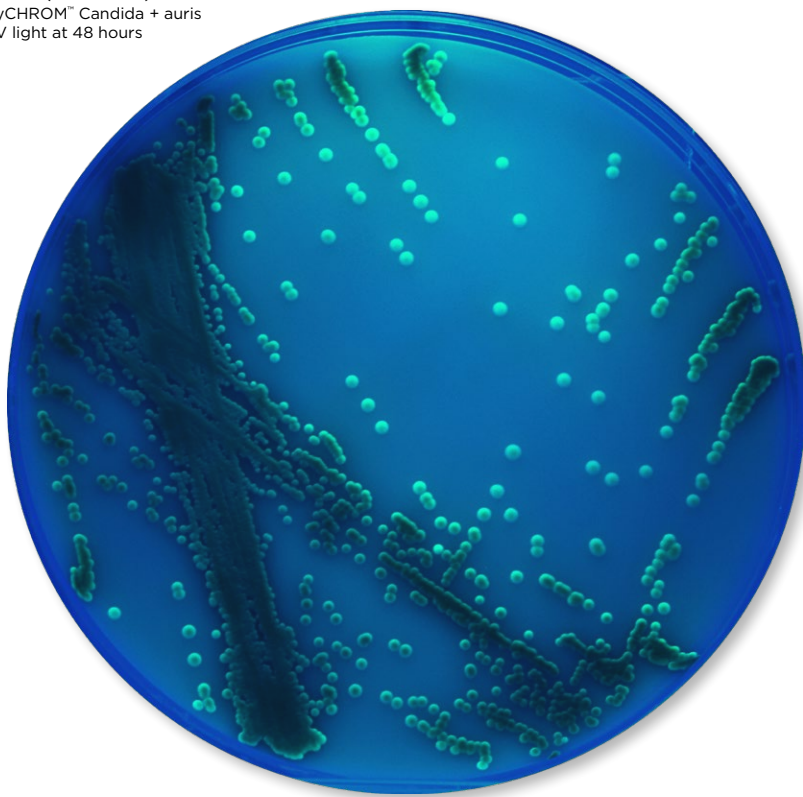


**HardyCHROM™ Candida + auris**  
15x100mm plate, 10/pk, Cat. no. G343

# Fluorogenic Reaction

The fluorescent reaction of ***C. auris*** on this HardyCHROM™ plate increases the reliability of your identification. Most typical yeast colonies tested for fluorescence at 48 hours using a UV lamp at 365nm will be negative, except for ***C. auris*** which will be positive at 48-72 hours. All suspected colonies should be subject to automated confirmatory ID method such as MALDI.

*Candida auris* (CDC 0385B)  
on HardyCHROM™ *Candida + auris*  
under UV light at 48 hours



## UV Lamp, Longwave

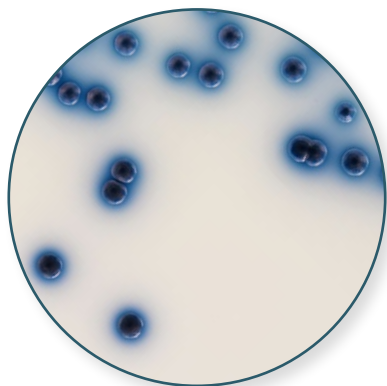
Handheld UV Lamp (6 watts)  
are uniquely designed with an  
ergonomically designed handle.

EA

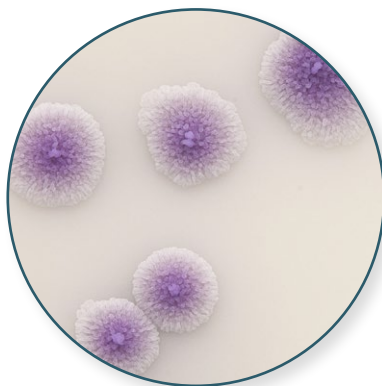
UVL56



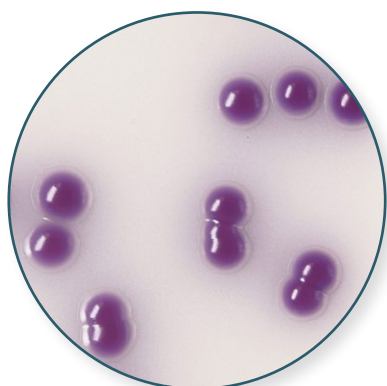
This medium also allows for the identification of *C. albicans*, *C. tropicalis*, *C. krusei*, and the presumptive identification of *C. glabrata*.



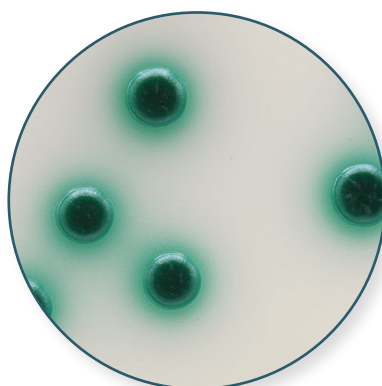
***C. tropicalis*** colonies appear medium blue to dark metallic blue with a blue halo.



***C. krusei*** produces rough, spreading, pink colonies.



***C. glabrata*** produces smooth, pink colonies, often with a darker mauve center.



***C. albicans*** produces a smooth, medium to green dark metallic green colonies.

# C. glabrata Confirmation

**HardyCHROM™ Candida + auris** can be used in conjunction with Rapid Trehalose Broth (Cat. no. Z205) or GlabrataQuick™ (Cat. no. Z298) to aid in the identification of *C. glabrata*. When **HardyCHROM™ Candida + auris** is used as the primary plating medium, only colonies that morphologically resemble *C. glabrata* should be tested for trehalose assimilation.



## GlabrataQuick™

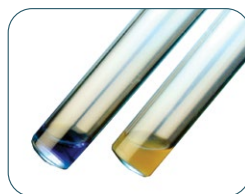
For the rapid identification of *Candida glabrata* by sugar fermentation.  
24 tests/kit

Z298



## The BLOK BOX™

Hardy Diagnostics offers free BLOK-BOXES for all light sensitive media. One box holds a sleeve of ten Petri plates. **Ask for a free box added to your order today.**

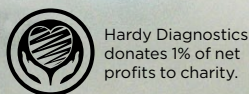
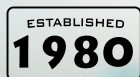


## Trehalose Broth, Rapid

A rapid screening method to aid in the detection of *Candida glabrata*, with results in 3 hours.  
10 tubes/box

Z205





FM 572526

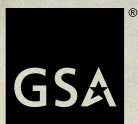
Hardy Diagnostics has a Quality Management System that is certified to ISO 13485 and is a FDA licensed medical device manufacturer.

#### Headquarters

1430 West McCoy Lane  
Santa Maria, CA 93455  
800.266.2222  
Sales@HardyDiagnostics.com  
HardyDiagnostics.com

#### Distribution Centers

Santa Maria, California  
Olympia, Washington  
Salt Lake City, Utah  
Phoenix, Arizona  
Dallas, Texas  
Des Moines, Iowa  
Springboro, Ohio  
Lake City, Florida  
Albany, New York  
Raleigh, North Carolina



**Contract Holder**  
Contract # 47QSWA22D0077