

Microbial Examination of **NON-STERILE PRODUCTS**


USP <60>

USP <61>

USP <62>

USP <1115>





Microbial Examination of **NON-STERILE PRODUCTS**

Content

- 1 USP <60>: Tests for *Burkholderia cepacia* complex
- 1 USP <61>: Microbial Enumeration Tests
- 2 USP <61> <62>: Recommended Buffer Solutions
- 2 USP <62>: Tests for Specified Organisms
- 5 USP <61> <62>: Microorganisms for Growth Promotion and Suitability
- 8 USP <61>: Membrane Filtration
- 11 Environmental Monitoring
- 12 Hygiene Verification
- 13 USP <1115>: Active Microbial Air Sampling



Hardy Diagnostics Media Formulations

USP/EP/JP Compliance

Hardy Diagnostics products meet or exceed all USP harmonized specifications.

Quality Assurance

Hardy Diagnostics is a premier supplier of sterility testing, microbial limits testing, and environmental monitoring products. Our rigorous quality control program and ISO 13485 certified facility ensure all Hardy Diagnostics products provide the highest quality and performance characteristics.

USP <60> Tests for *Burkholderia cepacia* complex

For the selective isolation and differentiation of *Burkholderia cepacia*.

Burkholderia cepacia Selective Agar (BCSA)

Format	Fill	Pack Size	Cat. no.
15x100mm Plate	18ml	10/pk	G09

USP <61> Microbial Enumeration Tests

Tryptic Soy Agar (TSA)

Format	Fill	Pack Size	Cat. no.
15x100mm Plate	18ml	10/pk & 100/pk	G60 / G60BX
15x100mm Plate	26ml	10/pk	W64
15x150mm Plate	69ml	10/pk	H19
20x125mm Glass Tube	18ml deep	20/pk	Q58
20x150mm Glass Tube	20ml deep	100/pk	Q85
236ml Glass Bottle, Screw Cap	150ml	20/pk	U49
236ml Glass Bottle, Screw Cap	200ml	12/pk	U260
473ml Glass Bottle, Screw Cap	400ml	12/pk	U360
500ml Glass Bottle, Screw Ca	500ml	Each	U158
500ml Polycarbonate Bottle, Screw Cap	500ml	10/pk	U361

Tryptic Soy Broth (TSB)

Format	Fill	Pack Size	Cat. no.
59ml Glass Bottle, Screw Cap	50ml	24/pk	U44
100ml Glass Bottle, Needle-Port Septum	100ml	20/pk	U46
118ml Glass Bottle, Screw Cap	100ml	20/pk	U42
180ml Wide Mouth Glass Jar, Screw Cap	100ml	12/pk	U71
236ml Wide Mouth Glass Jar, Screw Cap	90ml	12/pk	U133
500ml Glass Bottle, Needle-Port Septum	300ml	10/pk	U421
500ml Glass Bottle, Needle-Port Septum	500ml	10/pk	U274

Tryptic Soy Broth (TSB), with Lecithin and Tween® 80

Format	Fill	Pack Size	Cat. no.
20x125mm Glass Tube	9ml	20/pk	K134
20ml Serum Vial	10ml	50/pk	U423
180ml Wide Mouth Polycarbonate Jar, Screw Cap	99ml	12/pk	U292
500ml Glass Bottle, Needle-Port Septum	300ml	10/pk	U425
500ml Polypropylene Bottle	500ml	10/pk	U229

SabDex Agar

Format	Fill	Pack Size	Cat. no.
15x100mm Plate	26ml	10/pk	W70
500ml Polycarbonate Bottle, Screw Cap	500ml	10/pk	U353
473 ml Glass Bottle, Screw Cap	400ml	12/pk	U352

SabDex Agar with Lecithin and Tween® 80

Format	Fill	Pack Size	Cat. no.
473 ml Glass Bottle, Screw Cap	400ml	20/pk	U431
500ml Polycarbonate Bottle, Screw Cap	400ml	10/pk	U175

SabDex Broth

Format	Fill	Pack Size	Cat. no.
125ml Polycarbonate Bottle, Needle-Port Septum	100ml	16/pk	U73

USP <61> <62> Recommended Buffer Solutions

Description	Format	Fill	Pack Size	Cat. no.
Buffered Sodium Chloride-Peptone, USP	500ml Polycarbonate Bottle, Screw Cap	500ml	10/pk	U301
Buffered Sodium Chloride-Peptone, USP	180ml Wide Mouth Jar, Screw Cap	90ml	12/pk	U255
Phosphate Buffer pH 7.2	500ml Polycarbonate Bottle, Screw Cap	500ml	10/pk	U438

USP <62> Tests for Specified Organisms

Test for Bile-Tolerant Gram-negative Bacteria

Medium	Property	Test Strains*	Format	Fill	Pack Size	Cat. no.
EE Broth Mossel	Growth promoting	<i>Escherichia coli</i> , <i>Pseudomonas aeruginosa</i>	180ml Wide Mouth Jar, Screw Cap	90ml	12/pk	U291
	Inhibitory	<i>Staphylococcus aureus</i>	Dehydrated	500gm	Each	C8711
			Dehydrated	2kg	Each	C8712
			Dehydrated	10kg	Each	C8713
Violet Red Bile Glucose (VRBG) Agar	Growth promoting + Indicative	<i>Escherichia coli</i> , <i>Pseudomonas aeruginosa</i>	15x100mm Plate	18ml	10/pk	G178
			Dehydrated	500gm	Each	C7271
			Dehydrated	2kg	Each	C7272
			Dehydrated	10kg	Each	C7273

Test for *Staphylococcus aureus*

Medium	Property	Test Strains*	Format	Fill	Pack Size	Cat. no.
Mannitol Salt Agar (MSA)	Growth promoting + Indicative	<i>Staphylococcus aureus</i>	15x100mm Plate	18ml	10/pk	G40
	Inhibitory	<i>Escherichia coli</i>	Dehydrated	500gm	Each	C6231
			Dehydrated	2kg	Each	C6232
			Dehydrated	10kg	Each	C6233

Test for *Escherichia coli*

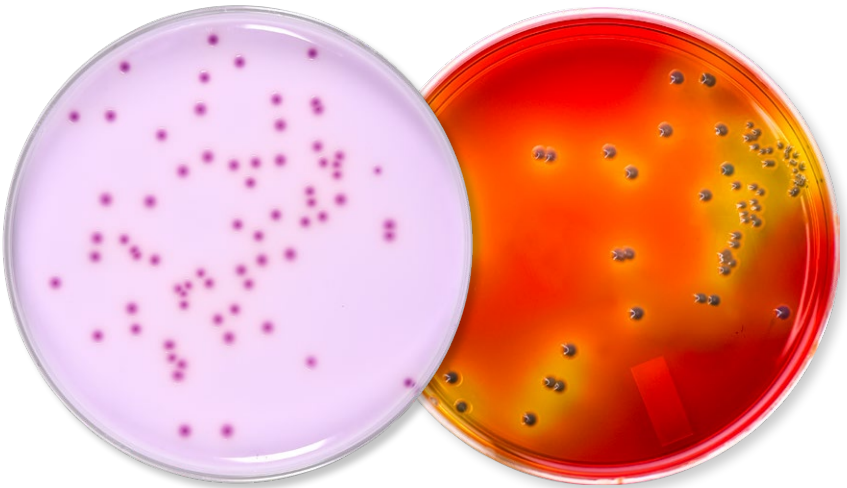
Medium	Property	Test Strains*	Format	Fill	Pack Size	Cat. no.
MacConkey Broth	Growth promoting	<i>Escherichia coli</i>	180ml Wide Mouth Jar, Screw Cap	100ml	12/pk	U125
	Inhibitory	<i>Staphylococcus aureus</i>	Dehydrated	500gm	Each	C6141
			Dehydrated	2kg	Each	C6142
			Dehydrated	10kg	Each	C6143
MacConkey Agar	Growth promoting + Indicative	<i>Escherichia coli</i>	15x100mm Plate	18ml	10/pk	G35
			15x100mm Plate	18ml	100/pk	G35BX
			Dehydrated	500gm	Each	C6131
			Dehydrated	2kg	Each	C6132
			Dehydrated	10kg	Each	C6133

Test for *Salmonella*

Medium	Property	Test Strains	Format	Fill	Pack Size	Cat. no.
Rappaport-Vassiliadis Salmonella Enrichment Broth	Growth promoting	<i>Salmonella enterica</i> ser. Typhimurium or Abony	16x125mm Glass Tube	10ml	20/pk	K246
	Inhibitory	<i>Staphylococcus aureus</i>	Dehydrated	500gm	Each	C6741
			Dehydrated	2kg	Each	C6742
			Dehydrated	10kg	Each	C6743
Xylose Lysine Deoxycholate (XLD) Agar	Growth promoting + Indicative	<i>Salmonella enterica</i> ser. Typhimurium or Abony	15x100mm Plate	18ml	10/pk	G65
			Dehydrated	500gm	Each	C7321
			Dehydrated	2kg	Each	C7322
			Dehydrated	10kg	Each	C7323

Test for *Clostridia*

Medium	Property	Test Strains	Format	Fill	Pack Size	Cat. no.
Reinforced Medium for Clostridia	Growth promoting	<i>Clostridium sporogenes</i>	118ml Glass Bottle, Screw Cap	100ml	20/pk	U172
			Dehydrated	500gm	Each	C8721
			Dehydrated	2kg	Each	C8722
			Dehydrated	10kg	Each	C8733
Columbia Agar	Growth promoting	<i>Clostridium sporogenes</i>	15x100mm Plate	18ml	10/pk	G250
			Dehydrated	500gm	Each	C5451
			Dehydrated	2kg	Each	C5452
			Dehydrated	10kg	Each	C5453



Cat. no. G335
HardyCHROM™ Bcc
 (*Burkholderia cepacia* complex)

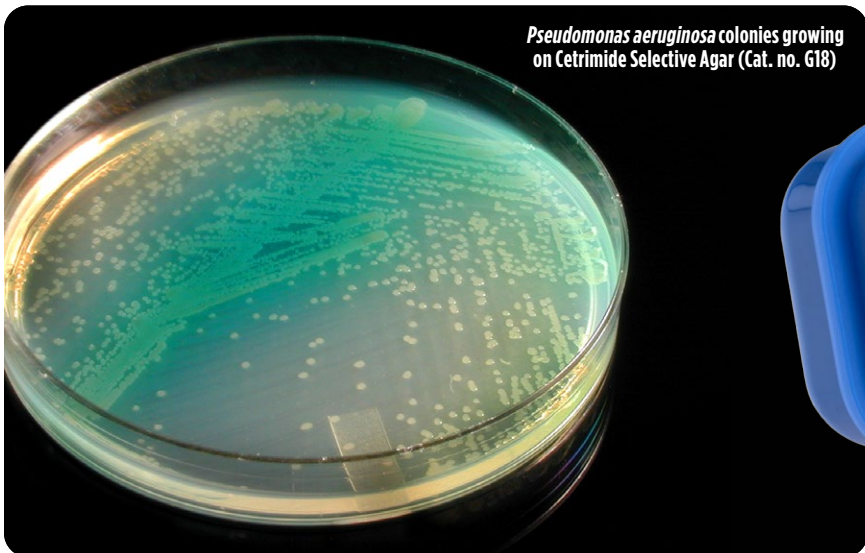
Cat. no. G09
Burkholderia cepacia Selective Agar
 (BCSA)

Test for *Candida albicans*

Test/Medium	Property	Test Strains	Format	Fill	Pack Size	Cat. no.
Sabouraud Dextrose (SabDex) Broth	Growth promoting	<i>Candida albicans</i>	125ml Polycarbonate Bottle with Septum Cap	100ml	16/pk	U73
			Dehydrated	500gm	Each	C7561
			Dehydrated	2kg	Each	C7562
Sabouraud Dextrose (SabDex) Agar	Growth promoting	<i>Candida albicans</i>	15x100mm Plate	26ml	10/pk	W70
			500ml Polypropylene Bottle, Screw Cap	200ml	10/pk	U270
			473ml Boston Round Glass Bottle, Screw Cap	200ml	12/pk	U227
			473ml Glass Bottle, Screw Cap	400ml	12/pk	U352
			Dehydrated	500gm	Each	C6811
			Dehydrated	2kg	Each	C6812
			Dehydrated	10kg	Each	C6813

Test for *Pseudomonas aeruginosa*

Test/Medium	Property	Test Strains	Format	Fill	Pack Size	Cat. no.		
Cetrimide Selective Agar	Growth promoting	<i>Pseudomonas aeruginosa</i>	15x100mm Plate	26ml	10/pk	G18		
			Inhibitory	<i>Escherichia coli</i>	Dehydrated	500gm	Each	C5371
					Dehydrated	2kg	Each	C5372
			Dehydrated	10kg	Each	C5373		



Pseudomonas aeruginosa colonies growing on Cetrimide Selective Agar (Cat. no. G18)

Microorganisms for Growth Promotion and Suitability



Microbiologics®



Description	Format	Cat. no.
USP <60> <i>Burkholderia cepacia</i> (ATCC® 25416™)	Epower™	0488E7
	EZ-Accu Shot™	0488A
	EZ-PEC™	0488PEC
	KWIK-STIK™ 6 Pack	0488K
	KWIK-STIK™ 2 Pack	0488P
	KWIK-STIK™ Plus	0488X
	Lab-Elite™ CRM	0488CRM
LYFO DISK™	0488L	

Description	Format	Cat. no.
USP <60> <i>Burkholderia cenocepacia</i> (ATCC® BAA-245™)	EPower™	01269E7
	EZ-Accu Shot™	01269A
	KWIK-STIK™ 2 Pack	01269P
	KWIK-STIK™ 6 Pack	01269K
LYFO DISK™	01269L	

Description	Format	Cat. no.
USP <60> <i>Burkholderia multivorans</i> (ATCC® BAA-247™)	EPower™	01270E7
	EZ-Accu Shot™	01270A
	KWIK-STIK™ 2 Pack	01270P
	KWIK-STIK™ 6 Pack	01270K
LYFO DISK™	01270L	

Description	Format	Cat. no.
USP <61> <i>Aspergillus brasiliensis</i> (ATCC® 16404™)	EPower™	0392E6
	EZ-Accu Shot™	0392A
	EZ-CFU™	0392C
	EZ-CFU™ One Step	0392Z
	EZ-PEC™	0392PEC
	KWIK-STIK™ 2 Pack	0392P
	KWIK-STIK™ Plus	0392X
	Lab Elite™ CRM	0392CRM

Description	Format	Cat. no.
USP <61> <i>Bacillus spizizenii</i> (ATCC® 6633™)	Epower™	0486E6
	EZ-Accu Shot™	0486A
	EZ-CFU™ One Step	0486Z
	EZ-PEC™	0486PEC
	KWIK-STIK™ 2 Pack	0486P
KWIK-STIK™ Plus	0486X	



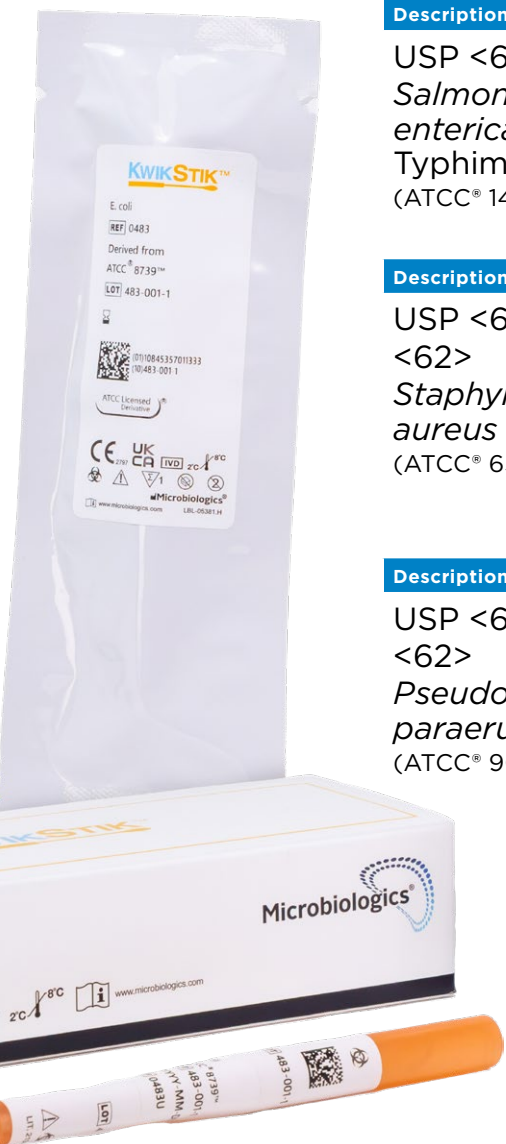
Description	Format	Cat. no.
USP <61> <62> <i>Candida albicans</i> (ATCC® 10231™)	Epower™	0443E7
	EZ-Accu Shot™	0443A
	EZ-CFU™ One Step	0443Z
	EZ-PEC™	0443PEC
	KWIK-STIK™ 2 Pack	0443P
	KWIK-STIK™ Plus	0443X

Description	Format	Cat. no.
USP <62> <i>Clostridium sporogenes</i> (ATCC® 11437™)	Epower™	0487E3
	EZ-Accu Shot™	0487A
	EZ-CFU™ One Step	0487Z
	KWIK-STIK™ 2 Pack	0487P
	KWIK-STIK™ Plus	0487X

Description	Format	Cat. no.
USP <62> <i>Clostridium sporogenes</i> (ATCC® 19404™)	Epower™	0317E3
	EZ-Accu Shot™	0317A
	EZ-CFU™ One Step	0317Z
	KWIK-STIK™ 2 Pack	0317P
	KWIK-STIK™ Plus	0317X

Description	Format	Cat. no.
USP <62> <i>Escherichia coli</i> (ATCC® 8739™)	Epower™	0483E7
	EZ-Accu Shot™	0483A
	EZ-CFU™ One Step	0483Z
	KWIK-STIK™ 2 Pack	0483P
	KWIK-STIK™ Plus	0483X
	LYFO DISK™	0483L





Description	Format	Cat. no.
USP <62> <i>Salmonella enterica</i> ser. Abony (NCTC 6017)	Epower™	0890E7
	EZ-Accu Shot™	0890A
	EZ-CFU™	0890C
	EZ-CFU™ One Step	0890Z
	KWIK-STIK™ 6 Pack	0890K
	KWIK-STIK™ Plus	0890X
	Lab-Elite™ CRM	0890CRM
	LYFO DISK™	0890L

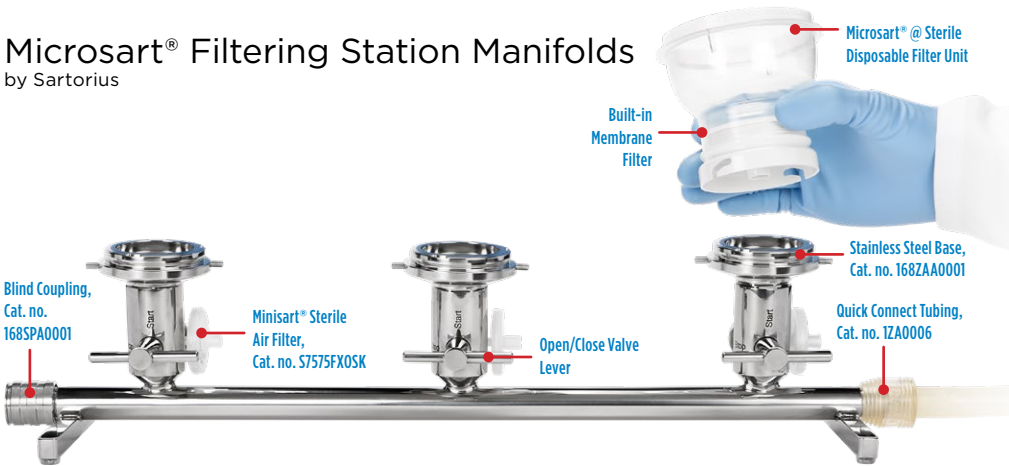
Description	Format	Cat. no.
USP <62> <i>Salmonella enterica</i> ser. Typhimurium (ATCC® 14028™)	EZ-Accu Shot™	0363A
	EZ-CFU™	0363C
	EZ-CFU™ One Step	0363Z
	KWIK-STIK™ 2 Pack	0363P
	KWIK-STIK™ Plus	0363X
	LYFO DISK™	0363L

Description	Format	Cat. no.
USP <60> <61> <62> <i>Staphylococcus aureus</i> (ATCC® 6538™)	Epower™	0485E7
	EZ-Accu Shot™	0485A
	EZ-CFU™ One Step	0485Z
	EZ-PEC™	0485PEC
	KWIK-STIK™ 2 Pack	0485P
	KWIK-STIK™ Plus	0485X
	LYFO DISK™	0827L

Description	Format	Cat. no.
USP <60> <61> <62> <i>Pseudomonas paraeruginosa</i> (ATCC® 9027™)	Epower™	0484E7
	EZ-Accu Shot™	0484A
	EZ-CFU™ One Step	0484Z
	KWIK-STIK™ 2 Pack	0484P
	KWIK-STIK™ Plus	0484X
	LYFO DISK™	0484L

Membrane Filtration <61>

Microsart® Filtering Station Manifolds by Sartorius



Membrane filtration is the established method of choice for liquid testing as it provides reliable and reproducible results. Microsart® Manifolds adapt to your individual microbiological testing procedures. Choose the manifold size, from single branch to multi-branch.

- Stable ergonomic design made of 100% stainless steel
- Autoclavable with no disassembly required
- Sterile venting in critical applications reduce risk of secondary contamination

Manifold Description	Cat. no.
1-Branch	168M1MS
2-Branch	168M2MS
3-Branch	168M3MS
6-Branch	168M6MS



Microsart® Manifold Accessories

Filter Adapter

For connecting Polycarbonate Filter holder 16511 with the Microsart® Manifold.

Each 168ZAD0001

Minisart® SRP Syringe Filters

Ready-to-use units for simple, rapid and reliable ultra-cleaning of small volume samples for the HPLC or GC analysis.

50/pk S7575FXOSK

Stainless Steel Blind Coupling

For 1, 3 and 6 place Microsart® Manifold.

Each 168SPA0001

Stainless Steel Base Support for Microsart® Manifold

For use of 47 mm Filter with Microsart® Funnels.

Each 168ZAA0001

Stainless Steel Base Support for Microsart® Manifold

For use with 47 or 50mm Biosart® 250 Funnels or 100ml/500ml Stainless Steel Funnels.

Each 168ZAB0001

Stainless Steel Double Coupling

For connecting two manifolds.

Each 168ZAC0001

Vacuum Pumps for Microsart® Filtering Station Manifolds

Microsart® e.jet Pump

Laboratory vacuum pump capable of simultaneously creating a vacuum and transferring filtered liquids to waste. Ideal for sample preparation in microbiological analysis. Constant flow rates, and a defined maximum vacuum, guarantee smooth and reliable filtration.



For use with 1, 2 and 3 branch manifolds only

Microsart® e.jet Vacuum Pump

Each 166MP4

1 Meter Silicone Vacuum Hose with Quick Connection

Each 1ZAS0016

2 Meter Silicone Pressure-sided Tubing

Each 1ZAS0019

10m Silicone Pressure-sided Tubing

Each 1ZAS0020

Quick Connect Silicone Tubing

for connecting manifold with e.jet pump.

Each 1ZA0006

Quick Connect Silicone Tubing

for connecting e.jet pump with receptacle flask.

Each 1ZAS0007

Quick Connection Coupling

For Silicon Tubing, PSU.

2/pk 168SPB0001

Microsart® maxi.vac Pump

Especially designed to meet the requirements of microbiology laboratories. The absolute vacuum is limited to 100 mbar. The adjustable vacuum allows for trouble free working according to ISO 8199.

- Neoprene membrane pumps
- Low noise level
- Oil-and maintenance-free
- Controlled and easily adjustable vacuum
- Effective vacuum for 3 and 6 place manifolds
- 115 V, 60 Hz



Each 1669416022

Microsart® @ Filters

100ml Volume

Pore Size	Filter Color/Grid	Size	Cat. no.
0.2µm	White/Black	24	16D011007TG
0.2µm	White/Black	27	16D011007ACG
0.2µm	White/Black	60	16D011007BL
0.45µm High-Flow	White/Black	24	16D0110H6TG
0.45µm High-Flow	White/Black	27	16D0110H6ACG
0.45µm High-Flow	White/Black	60	16D0110H6BL
0.45µm High-Flow	Black/White	27	16D0310H6ACG
0.45µm High-Flow	Gray/White	60	16D0310H6BL

250ml Volume

Pore Size	Filter Color/Grid	Size	Cat. no.
0.2µm	White/Black	48	16D012507BK
0.45µm High-Flow	Gray/White	18	16D0325H6ACF
0.45µm High-Flow	Gray/White	48	16D0325H6BK
0.45µm High-Flow	White/Black	18	16D0125H6ACF
0.45µm High-Flow	White/Black	48	16D0125H6BK
0.65µm	Gray/White	48	16D032505BK



Gridded Membrane Filters

Cellulose Nitrate (CN) Membrane Filter

Individually wrapped on single sheet, sterile packed, 47mm

Filter Color / Grid	Pore Size	Size	Cat. no.
White/black	0.45µm	100	1140647ACN
White/black	0.45µm High-Flow	100	114H647ACN

*Individually wrapped on pleated rolls, sterile packed, 47mm

White/black	0.45µm	300	11406Z47SCM
White/black	0.45µm High-Flow	300	114H6Z47SCM

*For use with Microsart® e.motion Filter Dispenser, Cat. no. 16713BO



Membrane filters for colony counting, particle testing and microscopy.

Environmental Monitoring

Contact Plates for Surface Sampling

LOK™ TIGHT



Non-Irradiated Contact Plates

Tryptic Soy Agar with Lecithin and Tween® 80, USP

For use as a general growth medium.

10/pk P34

Sabouraud Dextrose Agar

For the cultivation of fungi.

10/pk P36

Sabouraud Dextrose Agar with Lecithin & Tween® 80

For the cultivation of fungi from environmental samples.

10/pk P46

Malt Extract Agar with Lecithin and Tween® 80

For the cultivation of fungi.

10/pk P93

Irradiated Contact Plates

Tryptic Soy Agar with Lecithin and Tween® 80, USP

For the cultivation and enumeration of microorganisms.

Triple bagged, P520

Red tinted plate,
triple bagged,
10/pk P520R

Sabouraud Dextrose Agar with Lecithin and Tween® 80, USP

For the cultivation of fungi.

Triple bagged, P595

Improved design with friction-fit lid and locking mechanism



1. Remove lid from plate.



2. Gently press plate to surface without twisting or sliding.



3. Twist clockwise until frosted bands line up and lid locks into place.



4. Friction Lid design keeps lid in place. Locking feature ensures lids stay secured.

Hygiene Verification

PhosReader ATP Luminometer

The PhosReader ATP Luminometer is a device that rapidly and accurately measures adenosine triphosphate (ATP) levels from surface and water samples. With results available in seconds, this tool is commonly used for routine hygiene verification testing production spaces to ensure that surfaces are properly cleaned.

Benefits:

- Small and portable, which enables users to obtain results on site
- Low power consumption - 10 hours battery life and up to 600 hours standby time
- Quick 10-second result
- Intelligent software - data can be uploaded to the dedicated PC software after the test
- Built-in inclinometer that stops the test in case the incline angle is out of range
- Bluetooth connectivity available (Bluetooth printer pairing)
- Compatible with ATP-Flow Surface Test and ATP-Flow Total Water Test

Each PHR1020



ATP-Flow

ProGnosis Biotech's advanced ATP Surface and Water Testing Series, known as ATP-Flow, provides an effective solution for hygiene monitoring and cleanliness verification.

ATP is a molecule used as an indicator to measure the presence of organic materials to assess cleanliness.

ATP-Flow swabs are designed for ATP surface testing, and ATP-Flow Total is designed to detect the presence of ATP in water samples.



Distribution

ATP-Flow Surface (ATP Test)

ATP-Flow Total Water (ATP Test)

Cat. no.

SW1020

SW1120



TRIO.BASTM
BIOLOGICAL AIR SAMPLER

Active Microbial Air Sampling <1115>

Per USP <1115>: “...During non-sterile product manufacturing, the air sampling methods used for environmental monitoring are active or passive...monitoring programs should be risk based, and the frequency and number of sampling sites should reflect the risk level.”

- Instruments hold standard culture media (*see page 21*)
- Ergonomic and simple to use
- Delayed interval sampling
- Sample up to 70,000 liters of air on a full battery charge
- IP65 rated protection from dust and water



*AIRBIO DUO Shown
with DAILY SHIFT
HEADS (pg.17 & 19)

TRIO.BAS™ MINI Cable

Ideal for use in less critical environments



Each kit includes:

- TRIO.BAS™ MINI Bluetooth air sampler
- Battery charger and cable
- Aspirating head
- Cover head
- LIGHT carrying case
- Calibration certificate

Features:

- Aspirating head with quick bayonet closure system for easy manipulation
- Light weight: Significantly lighter than industry counterparts
- Rechargeable via external port using standard wall charger
- Note: Sampling data must be manually recorded with the MINI

Distribution

Cat. no.

MINI Kit, 100 liters/min., contact plate

BAS152K

MINI Kit, 100 liters/min., Petri plate

BAS153K

MINI Kit, 200 liters/min., contact plate

BAS162K

MINI Kit, 200 liters/min., Petri plate

BAS163K

TRIO.BAS™ MONO Induction



Each kit includes:

- TRIO.BAS™ MONO air sampler
- Induction battery charger and cable
- Aspirating head
- Cover head
- ROBUSTUS carrying case
- Calibration certificate
- IQ, OQ, PQ fillable document

Features:

- Delayed, interval sampling and remote start capabilities
- Bluetooth data transfer capability (requires an additional purchase, see page 20)
- Programmable place and personnel ID options
- No plugs or external connections

Distribution

Cat. no.

MONO Kit, 100 liters/min., contact plate

BAS200K

MONO Kit, 100 liters/min., Petri plate

BAS201K

MONO Kit, 200 liters/min., contact plate

BAS205K

MONO Kit, 200 liters/min., Petri plate

BAS206K

TRIO.BAS™ DUO Induction



Each kit includes:

- TRIO.BAS™ DUO air sampler
- Induction battery charger and cable
- Aspirating heads
- Cover heads
- ROBUSTUS carrying case
- Calibration certificate
- IQ, OQ, PQ fillable document

Features:

- Two aspirating heads for sampling on separate plates to determine bacterial and yeast/mold counts
- Programmable for simultaneous or interval aspirating times
- Delayed, interval sampling and remote start capabilities
- Bluetooth data transfer capability (requires an additional purchase, see page 20)
- Programmable place and personnel ID options
- No plugs or external connections

Distribution

Cat. no.

DUO Kit, 100 liters/min., contact plate

BAS220K

DUO Kit, 100 liters/min., Petri plate

BAS221K

DUO Kit, 200 liters/min., contact plate

BAS225K

DUO Kit, 200 liters/min., Petri plate

BAS226K

TRIO.BAS™ AIRBIO DUO Cable

Work surface stability with two aspirating heads.



Picture shows the instrument with optional DAILY SHIFT HEADS in use.



Each kit includes:

- TRIO.BAS™ AIRBIO DUO Cable
- Two stainless steel aspirating heads
- Two stainless steel head covers
- Charging and data transfer cables
- Robustus carrying case
- Calibration certificate
- IQ, OQ, PQ fillable documents

Features:

- Use separate culture media at the same time to determine bacterial and fungal counts
- Programmable place and personnel ID options
- Bluetooth data transfer capability (requires an additional purchase, see page 20)
- Charges via cable: Sample up to 70,000 liters on a single battery charge

Distribution

Cat. no.

AIRBIO DUO cable, 100 liters/min., contact plate

BAS479K

AIRBIO DUO cable, 100 liters/min., Petri plate

BAS480K

AIRBIO DUO cable, 200 liters/min., contact plate

BAS481K

AIRBIO DUO cable, 200 liters/min., Petri plate

BAS482K

TRIO.BAS™ AGC

An all-in-one instrument designed to meet all microbial environmental monitoring needs, including air sampling, gas sampling and instrument flow rate verification



Application:

Test for the presence of microorganisms in air/gas, and check the precision level of the instrument's flow rate. The AGC air sampler can support a flow rate of 100 liters per minute.

- Suitable for active microbial air sampling, testing compressed air (gas), and checking the calibration precision
- Annual calibration is recommended
- Input pressure capacity, 1-6 bar
- Aspirating head, aluminum bell and technopolymer bell are all autoclavable

Distribution

Cat. no.

AGC Microbial Air Sampler with cable, 100 liters/min., Petri plate

BAS670K

AGC Microbial Air Sampler with cable, 100 liters/min., contact plate

BAS671K

TRIO.BAS™ DAILY SHIFT HEADS

Individually packaged, sterile by irradiation, and includes a certificate of sterility assurance.

For use in place of stainless steel Aspiring Heads: Technopolymer aspiring heads ready for immediate use.



Benefits of Daily Shift Heads:

- DAILY SHIFT HEADS offer convenience and time savings during periods of unusually heavy workloads
- DAILY SHIFT HEADS offer peace of mind in case of autoclave breakage or unavailability
- DAILY SHIFT HEADS can be used on the same day, on the same shift, inside the same cleanroom
- Semi-transparent to confirm agar plate has been properly inserted
- Six year shelf life from date of sterilization

Distribution

DAILY SHIFT HEAD, contact plate, 20/pk

DAILY SHIFT HEAD, Petri plate, 20/pk

Cat. no.

BAS340

BAS341

Data Transfer

Data INTEGRITY VERIFIED

For TRIO.BAS™ instruments with Bluetooth or cable data transfer capability, choose the preferred data download method. A separate purchase is required.

Tablet Device*

(for data transfer)

Portable tablet for remote control of instrument(s), data download, storage, and transfer capabilities.

*Requires CD software BAS296

Each

BAS301



CD Software*

Enables data transfer capability from instrument to PC by Bluetooth.

*For Bluetooth capable Windows systems

Each

BAS296



Bluetooth Key*

For transferring sampling data to a PC that does not include built-in Bluetooth feature.

*Requires CD software BAS296

Each

BAS420



Bluetooth Printer

Small footprint. Pair with instrument for immediate printout of sampling data, or choose to store data and print out sampling history at a later date.

Bluetooth printer, 11 x 8 x 5

BAS520

Paper rolls (57mm, 10/pk)

BAS421



Prepared Culture Media

For passive and active air monitoring

Use as settling plates or with TRIO.BAS™ instruments

Petri Plates

Product	Specifications	Cat. no.
Malt Extract Agar	15x100mm plate, 26ml fill, 10/pk	W28
TSA (Tryptic Soy Agar), SterEM™, USP	Irradiated, 15x100mm plate, triple bagged, 34ml fill, 10/pk	W540
Tryptic Soy Agar, USP	15x100mm plate, 26ml fill, 10/pk	W64
SabDex (Sabouraud Dextrose) Agar, SterEM™, USP	Irradiated, 15x100mm plate, triple bagged, 26ml fill, 10/pk	W565
SabDex (Sabouraud Dextrose) Agar, USP	15x100mm plate, 26ml fill, 10/pk	W70

Contact Plates

Product	Specifications	Cat. no.
TSA (Tryptic Soy Agar) with Lecithin and Tween® 80, USP	15x65mm contact plate Lok-Tight™ friction lid, 10/pk	P34
SabDex (Sabouraud Dextrose) Agar	15x65mm contact plate Lok-Tight™ friction lid, 10/pk	P36
Malt Extract Agar with Lecithin and Tween® 80	15x65mm contact plate Lok-Tight™ friction lid, 10/pk	P93
TSA (Tryptic Soy Agar) with Lecithin and Tween® 80, USP	Irradiated, 15x65mm contact plate Lok-Tight™ friction lid, 10/pk	P520
SabDex Agar with Lecithin and Tween® 80, USP	Irradiated, 15x65mm contact plate Lok-Tight™ friction lid, 10/pk	P595





HARDY DIAGNOSTICS

A Culture of Service™

40 MORE THAN  Years of
Bringing You
A Culture of Service

 **100%**
Employee Owned

**MADE IN
USA**

**ESTABLISHED
1980**

 Hardy Diagnostics
donates 1% of net
profits to charity.

 **bsi**
ISO 13485
Quality
Management for
Medical Devices
CERTIFIED
FM 572526

Hardy Diagnostics has a Quality Management System that is certified to ISO 13485 and is a FDA licensed medical device manufacturer.

Headquarters

1430 West McCoy Lane
Santa Maria, CA 93455
800.266.2222
Sales@HardyDiagnostics.com
HardyDiagnostics.com

Distribution Centers

Santa Maria, California
Olympia, Washington
Salt Lake City, Utah
Phoenix, Arizona
Dallas, Texas
Des Moines, Iowa
Springboro, Ohio
Lake City, Florida
Albany, New York
Raleigh, North Carolina