

PREPARED

Culture Media

Pre-Reduced Media

anaero₂GRO™

Media for Anaerobes

AnaeroGRO™ plates are pre-reduced and packaged in an oxygen barrier Mylar® pouch that has been flushed with oxygen-free gas. In addition, each pouch contains an oxygen scavenger sachet and a desiccant to control excess condensation.



AnaeroGRO™ BBE/LKV (Bacteroides Bile Esculin Agar/Laked Sheep Blood, Kanamycin, and Vancomycin)

Section I: BBE Agar is an enriched, selective, and differential medium recommended for the isolation and presumptive identification of obligately anaerobic gram-negative bacilli of the *Bacteroides fragilis* group and *Bilophila* spp.

Section II: LKV Agar is recommended for use in the selective isolation and partial identification of obligately anaerobic gram-negative bacilli, such as *Prevotella* spp. and *Bacteroides* spp.

15x100mm biplate,

1 plate/Mylar® pouch

AG061

AnaeroGRO™ Brucella with H&K Agar (Brucella Agar with Hemin and Vitamin K)

For use in the primary isolation, quantitation, and partial identification of obligately anaerobic microorganisms. The medium is also suitable for the growth of aerobic and microaerophilic bacteria when incubated under the appropriate conditions.

15x100mm plate:

1 plate/Mylar® pouch

AG301

4 plates/Mylar® pouch

AG304

AnaeroGRO™ Egg Yolk Agar, Modified

An enriched, non-selective, differential medium recommended for use in the detection of lecithinase and lipase production; proteolytic activity of certain obligate anaerobes; and, presumptive identification of various *Clostridium*, *Fusobacterium*, and *Prevotella* spp. Modified Egg Yolk Agar is also used in the Nagler Test for the presumptive identification of *Clostridium perfringens*.

15x100mm plate,

1 plate/Mylar® pouch

AG401

AnaeroGRO™ Brucella Agar
with H&K, Cat. no. AG304

Pre-Reduced Media Combination Packs

AnaeroGRO™ DuoPak A (2 plates per pouch)

Biplate: BBE/LKV (Bacteroides Bile Esculin/ Laked Blood with Kanamycin and Vancomycin)

Section I: BBE Agar is an enriched, selective, and differential medium recommended for the isolation and presumptive identification of obligately anaerobic gram-negative bacilli of the *Bacteroides fragilis* group and *Bilophila* spp.

Section II: LKV Agar is recommended for use in the selective isolation and partial identification of obligately anaerobic gram-negative bacilli, such as *Prevotella* spp. and *Bacteroides* spp.

Monoplate: Brucella with H&K Monoplate

Recommended for use in the primary isolation, quantitation, and partial identification of obligately anaerobic microorganisms.

15x100mm plate,
2 plates/Mylar® pouch

AG302

AnaeroGRO™ DuoPak B (2 plates per pouch)

Monoplate: Brucella with H&K

Recommended for use in the primary isolation, quantitation, and partial identification of obligately anaerobic microorganisms.

Biplate: BBE/PEA (Anaerobic Phenylethyl Alcohol Agar)

Section I: BBE Agar is an enriched, selective, and differential medium recommended for the isolation and presumptive identification of obligately anaerobic gram-negative bacilli of the *Bacteroides fragilis* group and *Bilophila* spp.

Section II: Anaerobic PEA Agar is recommended for use as an enriched and selective medium for the cultivation and selective isolation of gram-positive and negative obligate anaerobic bacteria.

15x100mm plate,
2 plates/Mylar® pouch

AG312

- Pre-reduced (ready-to-use) culture media packaged in oxygen-free, gas-flushed MylarFoil pouches
- Contains an oxygen scavenger sachet and a moisture absorbing desiccant packet
- MylarFoil pouches with easy-to-open, pre-scored notch
- Wide variety of packaging combinations available: monoplates, biplates, and primary set-up combinations
- Room temperature storage
- Quality Control tested for reliable and reproducible results
- Exceptional growth and performance characteristics compared to other brands
- Manufactured in an ISO 13485 certified facility
- Competitive pricing, quality products, and exceptional service and support



AnaeroGRO™ DuoPak A, Cat. no. AG302

Pre-Reduced Media MultiPaks

AnaeroGRO™ MultiPak A (3 plates per pouch)

Monoplate: AnaeroGRO™ Brucella Agar with Hemin & Vitamin K

Recommended for use in the primary isolation, quantitation, and partial identification of obligately anaerobic microorganisms from clinical specimens. The medium is also suitable for the growth of aerobic and microaerophilic bacteria when incubated under the appropriate conditions.

Monoplate: AnaeroGRO™ Anaerobic PEA Agar

Recommended for use as an enriched and selective medium for the cultivation and selective isolation of gram-positive and negative obligate anaerobic bacteria. It is useful in isolating obligate anaerobes from mixed flora, by inhibiting gram-negative facultative anaerobes and the control of swarming organisms.

Biplate: AnaeroGRO™ BBE/LKV

Section I: AnaeroGRO™ BBE Agar is an enriched, selective, and differential medium recommended for the isolation and presumptive identification of obligately anaerobic gram-negative bacilli of the *Bacteroides fragilis* group and *Bifidophila* spp.

Section II: AnaeroGRO™ LKV Agar is recommended for use in the selective isolation and partial identification of obligately anaerobic gram-negative bacilli, such as *Prevotella* spp. and *Bacteroides* spp.

15x100mm plate,
3 plates/Mylar® pouch

AG303

AnaeroGRO™ MultiPak B (3 plates per pouch)

Monoplate: AnaeroGRO™ Brucella Agar with Hemin & Vitamin K

Recommended for use in the primary isolation, quantitation, and partial identification of obligately anaerobic microorganisms from clinical specimens. The medium is also suitable for the growth of aerobic and microaerophilic bacteria when incubated under the appropriate conditions.

Monoplate: AnaeroGRO™ LKV Agar

Recommended for use in the selective isolation and partial identification of obligately anaerobic gram-negative bacilli, such as *Prevotella* spp. and *Bacteroides* spp.

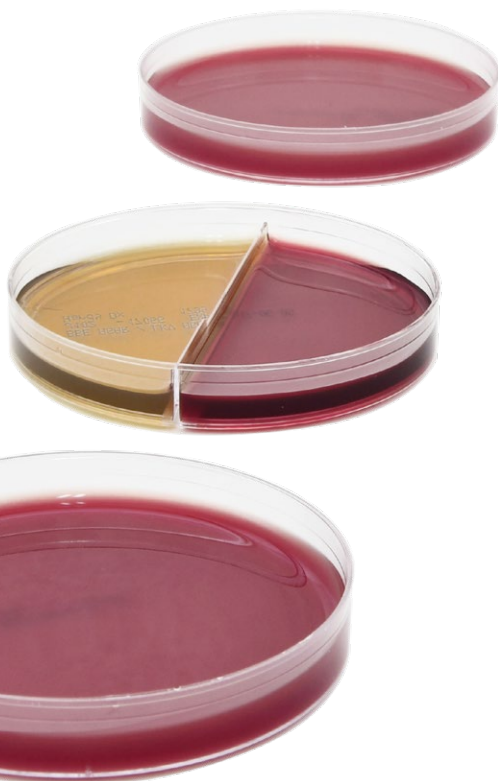
Monoplate: AnaeroGRO™

Anaerobic PEA Agar

Recommended for use as an enriched and selective medium for the cultivation and selective isolation of gram-positive and negative obligate anaerobic bacteria. It is useful in isolating obligate anaerobes from mixed flora, by inhibiting gram-negative facultative anaerobes and the control of swarming organisms.

15x100mm plate,
3 plates/Mylar® pouch

AG313



AnaeroGRO™ MultiPak A,
Cat. no. AG303

anaero₂GRO™

Pre-Reduced Anaerobic Culture Media

Pre-Reduced Media Tubes

AnaeroGRO™ Chopped Meat Broth

Recommended for the cultivation of microaerophilic, facultative and obligate anaerobic microorganisms, especially *Clostridium* species.

16x125mm glass tube, needle port hungate cap,
9ml fill, 20/pk AG21H

AnaeroGRO™ Chopped Meat Carbohydrate Broth

Recommended for the cultivation of microaerophilic and facultative or obligate anaerobic microorganisms and for the use with gas-liquid chromatography for analysis of anaerobic metabolic products.

16x125mm glass tube, needle port hungate cap,
9ml fill, 20/pk AG20H

AnaeroGRO™ Chopped Meat Glucose Broth

Recommended for the cultivation of microaerophilic and facultative or obligate anaerobic microorganisms, especially *Clostridium* species.

16x125mm glass tube, needle port hungate cap,
9ml fill, 20/pk AG19H

AnaeroGRO™ Thioglycollate with Hemin and Vitamin K (H and K), without Indicator

Recommended for the cultivation of microaerophilic and facultative or obligate anaerobic microorganisms, including fastidious species.

16x125mm glass tube,
needle port hungate cap,
7ml fill, 20/pk AG23H

16x125mm glass tube,
needle port hungate cap,
9ml fill, 20/pk AG22H

AnaeroGRO™ Anaerobic Transport Medium

For use in maintaining the viability of obligate anaerobic microorganisms, as well as aerobic and facultatively anaerobic bacteria, during transport.

15x103mm tube, hungate septum cap,
and no swabs, 7ml fill,
20/pk AG25H



AnaeroGRO™ Chopped Meat Glucose Broth, Cat. no. AG19H



AnaeroGRO™ Thioglycollate with Hemin and Vitamin K (H and K), without Indicator, Cat. no. AG22H

Prepared Culture Media

A8 Agar

For the selective isolation of *Mycoplasma hominis* and *Ureaplasma urealyticum*.
15x60mm plate, 10/pk G02

Acetamide Agar Slant

For the differentiation of *Pseudomonas aeruginosa*.
16x100mm glass tube,
5.5ml fill, 20/pk L02

Acetate Differential Slant

Used to differentiate *Escherichia coli* from members of the genus *Shigella*.
16x100mm glass tube,
5.5ml fill, 20/pk L15

Agar Deep, 1.5% (Water Agar)

Used in the Kirby-Bauer alternative agar-overlay method of inoculation for antimicrobial disk diffusion susceptibility testing and for microbiological procedures that require an additive-free solid medium.
16x125mm glass tube,
9ml fill, 10/pk Q01

AK #2 Agar

For use as a culture medium for the preparation of spore suspensions used in the detection of antibiotic residues (such as penicillin and sulfa drugs) in milk and dairy products.
236ml glass bottle, 200ml fill, 12/pk U189

Alkaline Peptone Water

For the cultivation of *Vibrio* spp. from feces and other materials.
16x125mm glass tube,
8ml fill, 20/pk K03

Anaerobic PEA Agar (Phenylethyl Alcohol)

For use as an enriched medium for the cultivation and selective isolation of gram-positive and negative obligate anaerobic bacteria.
15x100mm plate, 10/pk A90

Antibiotic Medium, USP

For use in the determination of antimicrobial activity. Formulated according to USP <81>.
1, 500ml polycarbonate bottle, 500 ml fill, 10/pk U501
8, 500ml polycarbonate bottle, 500 ml fill, 10/pk U508
10, 473ml glass Boston round bottle, 400 ml fill, 12/pk U510
11, 500ml polycarbonate bottle, 500 ml fill, 10/pk U511
19, 500ml polycarbonate bottle, 500 ml fill, 10/pk U514

Arylsulfatase Broth

For use in detecting arylsulfatase production in *Mycobacteria* spp.
16x125mm tube, 2ml fill, 20/pk.
0.001M K93
0.003M K94

Auris Enrichment Broth

For the selective enrichment of *Candida auris* from patient skin and environmental samples.
13x100mm tube, 2ml, 20/pk R12

Bacillus cereus Selective Agar

For the isolation and differentiation of *Bacillus cereus* in foods.
15x100mm plate, 10/pk G156

Baird Parker Agar

For the detection and enumeration of coagulase-positive staphylococci, such as *Staphylococcus aureus* from food samples.
15x100mm plate, 10/pk G96

Barney Miller Medium

For the detection of beer spoilage microorganisms and for the cultivation and enumeration of bacteria and yeast encountered in the brewing industry.
15x60mm plate, 10/pk G93

BBE Agar

(*Bacteroides Bile Esculin*)
For the isolation and presumptive identification of the *Bacteroides fragilis* group.
15x100mm plate, 10/pk G05

BBE/LKV Biplate (*Bacteroides Bile Esculin/Laked Blood, with Kanamycin and Vancomycin*)

Section I: BBE Agar is recommended for use in the selective isolation and presumptive identification of *Bacteroides fragilis* group.
Section II: LKV Agar is recommended for use in the isolation and partial identification of anaerobic microorganisms.
15x100mm biplate, 10/pk J102

BCSA, USP (*Burkholderia cepacia* Selective Agar)

For the selective isolation and differentiation of *Burkholderia (Pseudomonas) cepacia*.
15x100mm plate, 10/pk G09

BCYE Agar (Buffered Charcoal Yeast Extract)

For the cultivation of *Legionella* spp.
15x100mm plate, 10/pk G07
Red Tint Plate, 15x100mm plate, 10/pk G07R
20x125mm glass tube, 10ml slant, 20/pk L24
Selective Agar with CAV (Colistin, Anisomycin, and Vancomycin) 15x100mm plate, 10/pk G08
Selective Agar with CCVC (Cephalothin, Colistin, Vancomycin, and Cycloheximide) 15x100mm plate, 10/pk G170
Selective Agar with GVPC (Glycine, Vancomycin, Polymyxin, and Cycloheximide) 15x100mm plate, 26ml deep fill, 10/pk W169
With DGVP (Dyes, Glycine, Vancomycin, and Polymyxin B) 15x100mm plate, 10/pk G209

BCYE Agar
(Continued)

With GPVC (Glycine, Polymyxin, Vancomycin, and Cycloheximide, without Cysteine).
15x100mm plate, 28ml deep fill,
10/pk **W76**

With VPC (Vancomycin, Polymyxin, Cycloheximide, no Glycine).
15x100mm plate, 28ml deep fill,
10/pk **W79**
Without Cysteine
15x100mm plate, 10/pk **G108**

BCYE Agar/BCYE Agar without Cysteine
(Buffered Charcoal Yeast Extract)

Section I: BCYE Agar, for use in the cultivation and primary isolation of *Legionella* spp. in water and other samples suspected of harboring the bacteria.
Section II: BCYE Agar without Cystein.
15x100mm biplate, 10/pk **J61**

BE with Azide
(Bile Esculin)
Recommended for the isolation and differentiation of group D streptococci from non-group D streptococci. Inhibits gram-negative bacteria.
15x100mm plate, 10/pk **G11**
Broth, 13x100mm tube, 5ml fill, 20/pk **K11**

BEA
(Bile Esculin Agar)
For the cultivation and differentiation of group D streptococci/enterococci.
15x100mm plate, 10/pk **G12**
16x100mm glass tube, 5.5ml slant, 20/pk **L10**



BCYE Agar,
Cat. no. W76

BEA with Azide/ Columbia CNA Biplate
(Bile Esculin Agar with Azide/Columbia Agar with 5% Sheep Blood, Colistin, and Nalidixic Acid)

Section I: BEA with Azide
Media are recommended for the isolation and differentiation of group D streptococci from non-group D streptococci.
Section II: Columbia CNA
Agar is recommended for use as a selective growth medium for the isolation and differentiation of gram-positive cocci.
15x100mm biplate, 10/pk **J66**

Brilliant Green Agar
For the isolation of *Salmonella* spp. other than *Salmonella* Typhi and *Salmonella* Paratyphi.
15x100mm plate, 10/pk **G75**

Beta Toxin
Used to detect the presence of the CAMP factor gene which aids in the presumptive identification of *Streptococcus agalactiae* from bovine samples.
59ml PETG bottle, 25ml fill, Each **Z306**
125ml polycarbonate bottle, 100ml fill, Each **Z305**

BF-BEB, Modified (2X)
(Blood-Free Bolton Enrichment Broth)
For the selective enrichment of *Campylobacter* species from food, dairy, and poultry products.
125ml polycarbonate bottle, 30ml fill, 16/pk **U401**

BG Agar with Novobiocin
(Brilliant Green)
For the selective isolation and differentiation of *Salmonella* spp.; BG Agar contains 20µg/ml novobiocin.
15x100mm plate, 10/pk **G175**

BG Bile Broth with Durham Tube
(Brilliant Green)
For the detection of coliforms, contains Durham tube for gas detection.
16x125mm glass tube, 10ml fill, 20/pk **K66**
20x125mm glass tube, 13ml fill, 20/pk **K09**

BG Sulfa Agar
(Brilliant Green)
For the selective isolation of *Salmonella* spp.
15x100mm plate, 10/pk **G87**

BHI Agar
(Brain Heart Infusion)
For the cultivation of microorganisms.
15x100mm plate, 26ml deep fill, 10/pk **W15**
25x100mm plate, 59ml deep fill, 5/pk **W163**
16x100mm glass tube, 5.5ml slant, 20/pk **L36**
20x125mm glass tube, 10ml slant, 20/pk **L35**
20x150mm glass tube, 18ml deep, 20/pk **Q16**
HardyFlask™, 12ml slant, 20/pk **X10**

BHI Agar with Blood
(Brain Heart Infusion with 5% Sheep Blood)
For the cultivation of microorganisms.
15x100mm plate, 10/pk **A20**
25x100mm plate, 37ml deep fill, 50/pk **W185BX**
20x125mm glass tube, 10ml slant, 20/pk **L31**
HardyFlask™, 12ml slant, 20/pk **X13**

BHI Agar with Blood and Gentamicin
(Brain Heart Infusion)
For the selective isolation of pathogenic fungi.
HardyFlask™, 12ml slant, 20/pk **X12**

BHI Agar, with Blood, Chloramphenicol, and Gentamicin
(Brain Heart Infusion)
For the selective isolation of pathogenic fungi.
15x100mm plate, 26ml deep fill, 10/pk **W65**

20x125mm tube, 10ml slant 20/pk **L114**
HardyFlask™, 12ml slant, 20/pk **X14**

BHI Agar with Chloramphenicol and Cycloheximide (Brain Heart Infusion)
 For the selective isolation of pathogenic fungi.
 HardyFlask™, 12ml slant, 20/pk X11

BHI Agar with Vancomycin (Brain Heart Infusion)
 An agar screen used for detection of ancomycin-resistant enterococci (VRE), with 6µg/ml vancomycin.
 15x100mm plate, 10/pk G14

BHI Broth (Brain Heart Infusion)
 For the cultivation of microorganisms.
 16x125mm glass tube, 10ml fill, 20/pk K25
 16x100mm glass tube, 5ml fill, 20/pk K27
 13x100mm polycarbonate tube, 0.5ml fill, 20/pk R10
 13x100mm polycarbonate tube, 1ml fill, 20/pk K110
 13x100mm polycarbonate tube, 2ml fill, 20/pk R15
 13x100mm polycarbonate tube, 5ml fill, 20/pk R20

BHI Broth with 5% Fildes Solution (Brain Heart Infusion)
 For the cultivation of capsular strains of *Haemophilus influenzae*.
 16x125mm glass tube, 10ml fill, 20/pk K08

BHI Broth with 15% Glycerol (Brain Heart Infusion)
 A cryopreservative for the freezing of microorganisms.
 15x45mm glass tube, 2ml fill, 100/pk D114

BHI Broth with Ciprofloxacin (Brain Heart Infusion)
 For use as a selective pre-enrichment broth for gram-negative microorganisms with reduced susceptibility to ciprofloxacin.
 13x100mm glass tube, 5ml fill, 20/pk K258

BHI Broth with Hemin and Vitamin K (Brain Heart Infusion)
 Recommended for the cultivation and isolation of aerobic and anaerobic microorganisms.
 16x125mm glass tube, 10ml fill, 20/pk K75

BiGGY Agar (Nickerson Agar/Bismuth Sulfite, Glucose, Glycine, Yeast)
 For the selective isolation and presumptive identification of *Candida* spp.
 13x100mm tube, 3ml slant, 20/pk R21
 15x100mm plate, 10/pk G17

BLEB (Buffered Listeria Enrichment Broth)
 For the selective enrichment of *Listeria monocytogenes* from food samples.
 354ml wide mouth glass jar, 225ml fill, 12/pk U233
 Selective Supplement, 13x100mm polycarbonate tube, 3.4ml fill, 20/pk K183

Blood Agar, 5% (Tryptic Soy Agar with 5% Sheep Blood)
 Tryptic Soy Agar is a nutritious basal medium with the addition of 5% sheep blood provides an excellent general growth medium.
 LokTight™ 15x65mm contact plate, 10/pk P33
 15x100mm plate, 10/pk A10
 15x100mm plate, 100/pk A10BX
 15x100mm plate, reduced stacking ring, 10/pk GA10
 15x150mm large plate, 70ml fill, 10/pk H28
 86x128mm omni tray, 30ml fill, 10/pk A127
 16x100mm glass tube, 5.5ml slant, 20/pk L12



Streptococcus pyogenes on Blood Agar 5%, Cat. no. A10

Blood Agar 5%/Blood Agar 5% Biplate (Tryptic Soy Agar with 5% Sheep Blood)
 For the cultivation of microorganisms.
 15x100mm biplate, 10/pk J93

Blood Agar, 5%/Chocolate Agar Biplate (Tryptic Soy Agar with 5% Sheep Blood)
Section I: Blood Agar is recommended for use as general purpose growth media for the isolation, cultivation, and differentiation of a wide variety of microorganisms.
Section II: Chocolate Agar is recommended for use in the isolation and cultivation of fastidious microorganisms, particularly *Haemophilus* and *Neisseria* species.
 15x100mm biplate, 10/pk J42

Blood Agar 5%/CLED with Bile Salts Biplate (Tryptic Soy Agar with 5% Sheep Blood)
Section I: Blood Agar, for use as general purpose growth media for the isolation, cultivation, and differentiation of a wide variety of microorganisms.
Section II: CLED Agar, for the isolation, enumeration, and presumptive identification of urinary pathogens on the basis of lactose fermentation, while controlling the swarming of *Proteus* spp.
 15x100mm biplate, 10/pk J65

Blood Agar 5%/EMB Biplate (Tryptic Soy Agar with 5% Sheep Blood/Eosin Methylene Blue Agar)
Section I: Blood Agar, for use as general purpose growth media for the isolation, cultivation, and differentiation of a wide variety of microorganisms.
Section II: EMB Agar for use as selective and differential media for the isolation of gram-negative bacilli (including coliform organisms and enteric pathogens) from clinical and non-clinical specimens.
 15x100mm biplate, 10/pk J22

Blood Agar, 5%/MacConkey Biplate
(Tryptic Soy Agar with 5% Sheep Blood/MacConkey Agar)

Section I: Blood Agar for use as general purpose growth media for the isolation, cultivation, and differentiation of a wide variety of microorganisms.

Section II: MacConkey Agar for use as a selective and differential medium for the isolation of gram-negative bacilli, on the basis of lactose fermentation.

15x100mm biplate, 10/pk	J32
15x100mm biplate, 100/pk	J32BX

Blood Agar, 5% with Ampicillin
(Tryptic Soy Agar with 5% Sheep Blood and Ampicillin)

For the cultivation and selective isolation of *Aeromonas* spp.

15x100mm plate, 10/pk	A12
-----------------------	-----

Blood Agar, 8%
(Tryptic Soy Agar with 8% Sheep Blood)

For use as a general purpose growth media for the isolation, cultivation, and differentiation of a wide variety of microorganisms.

15x100mm plate, 100/pk	A17BX
------------------------	-------

Blood Agar, 10%
(Tryptic Soy Agar with 10% Sheep Blood)

For the cultivation of microorganisms.

15x100mm plate, 10/pk	A71
-----------------------	-----



Blood Agar, 5%/MacConkey Biplate,
Cat. no. J32

Blood Agar, EH
(Tryptic Soy Agar with 5% Blood, Enhanced Hemolysis Formula)

For the cultivation of microorganisms; Blood Agar, EH produces larger and clearer zones of beta hemolysis.

Blood, Sheep, Defibrinated

Our sheep blood is obtained from a donor herd specifically for Hardy Diagnostics: sheep are humanely bled and rotated on a veterinary supervised program. This ensures blood is kept antibiotic-free and as fresh as possible, making it less prone to spontaneous hemolysis.

Screw Cap bottle	
30ml, Each	SB30
50ml, Each	SB50
59ml, Each	SB60
100ml, Each	SB100
Needle port bottle	
100ml, Each	SB100S
500ml, Each	SB500S

Bolton Broth

For the selective enrichment of *Campylobacter* spp. from food and dairy products.

500ml polycarbonate bottle, 225ml fill, 10/pk	U83
---	-----

Bovine Blood Agar, 5%
(Tryptic Soy Agar with 5% Triple Washed Bovine Blood)

For the detection of organisms that may cause mastitis in dairy cattle such as *Staphylococcus aureus* and *Streptococcus* spp.

15x100mm plate, 10/pk	A188
-----------------------	------

Bovine Blood Agar, 5%, with Esculin
(Tryptic Soy Agar with 5% Triple Washed Bovine Blood and Esculin)

For the differentiation of group D streptococci from *Streptococcus agalactiae*.

15x100mm plate, 10/pk	A189
-----------------------	------

Bovine Blood Agar, 5%, with Esculin/MacConkey Agar Biplate

Section I: Bovine Blood Media is recommended as a general purpose growth media for the cultivation, selective isolation, and differentiation of organisms responsible for mastitis in dairy populations.

Section II: MacConkey Agar is recommended for use as a selective and differential medium for the isolation of gram-negative bacilli (including coliform organisms and enteric pathogens), on the basis of lactose fermentation.

15x100mm biplate, 10/pk	J129
-------------------------	------

Bovine Selective Staph Agar

For the cultivation, and selective isolation, of *Staphylococcus* from bovine mastitis specimens.

15x100mm plate, 10/pk	A157
-----------------------	------

Bovine Selective Strep Agar

For the selective isolation of *Streptococcus* species from bovine mastitis specimens.

15x100mm plate, 10/pk	A143
-----------------------	------

Bovine Serum Albumin

Enhances the growth of *Mycobacteria* spp.

13x100mm tube, 3ml fill, 20/pk	Z81
--------------------------------	-----

Brucella Agar with 5% Sheep Blood, Hemin, and Vitamin K

For the cultivation of anaerobic bacteria.

15x100mm plate, 10/pk	A30
15x150mm large plate, 10/pk	H05

Brucella Broth

For use as a general purpose growth media for the isolation, cultivation, and differentiation of a variety of fastidious organisms, such as *Streptococcus* and *Brucella* spp. in clinical and food samples.

13x100mm polycarbonate tube, 1ml fill, 100/pk	R18
---	-----

Brucella Broth with 15% Glycerol

For the cryopreservation of organisms by freezing.

15x45mm glass vial, 2ml fill,
100/pk D04

Brucella with H and K/ LKV Biplate

(Brucella Agar with 5% Sheep Blood, Hemin and Vitamin K /Laked Blood Kanamycin and Vancomycin Agar)

Section I: Brucella Agar with H and K is recommended for use in the primary isolation and cultivation of anaerobic microorganisms.

Section II: LKV Agar is recommended for use in the isolation and partial identification of anaerobic microorganisms.
15x100mm biplate, 10/pk J87

Buffered Peptone Water

A pre-enrichment medium used to increase the recovery of injured *Salmonella* spp. prior to selective enrichment and isolation.

16x125mm tube, 9ml fill,
20/pk K107

16x125mm tube, 10ml fill,
20/pk K195

500ml polycarbonate bottle,
225ml fill, 10/pk U142

500ml polycarbonate bottle,
400ml fill, 10/pk U143

Dilu-Lok™ 145ml polypropylene vial, with flip-top lid,
90ml fill, 50/pk D080

Dilu-Lok™ 145ml polypropylene vial, with flip-top lid,
99ml fill, 50/pk D089

Buffered NaCl Peptone EP, USP

Recommended for use as a diluent in performing microbial examination of non-sterile products.

180ml wide mouth jar,
90ml fill, 12/pk U255

500ml polycarbonate bottle,
500ml fill, 10/pk U301

Butterfield's Phosphate Buffer

For the preparation of dilutions for plate count and other laboratory tests.

16x125mm glass tube, 9ml fill,
20/pk K109

16x125mm glass tube, 9.9ml fill,
20/pk K208

20x125mm, 9ml fill,
20/pk K209

13ml polypropylene tube,
9ml fill, 20/pk K119

Dilu-Lok™ 145ml polypropylene vial, with flip-top lid,
90ml fill, 50/pk D590

Dilu-Lok™ 145ml polypropylene vial, with flip-top lid,
99ml fill, 50/pk D599

500ml polycarbonate bottle,
400ml fill, 10/pk U154

500ml polycarbonate bottle,
450ml fill, 10/pk U150

500ml polycarbonate bottle,
500ml fill, 10/pk U190

Polypropylene bottle,
125ml, 100ml fill, 12/pk U290

Caffeic Acid Agar (Bird Seed Agar)

For the selective isolation and differentiation of *Cryptococcus neoformans* and *Cryptococcus gattii*.
15x100mm plate, 10/pk G213

Campy Cefex Agar, Modified

For the selective isolation of cephalothin resistant *Campylobacter* spp. such as *Campylobacter jejuni*, *Campylobacter coli*, and *Campylobacter lari*.
15x100mm plate, 10/pk A122

Campy CVA Agar (Campy Agar with 5% Sheep Blood, Cefoperazone, Vancomycin and Amphotericin B)

For the selective isolation of *Campylobacter*.
15x100mm plate, 10/pk A40

Campy FDA Agar (Brucella Agar w/7% Lysed Horse Blood & PVANT Antibiotics)

For the selective isolation of *Campylobacter* spp.
15x100mm plate, 10/pk A139

Campy, Blood Free, Karmali Agar (Karmali Formula, with Charcoal, Cefoperazone, Vancomycin, and Amphotericin B)

For the selective isolation of *Campylobacter* spp.
15x100mm plate, 10/pk G06

Campy Thioglycollate

For the selective isolation of *Campylobacter* spp. from stool specimens. Contains five selective antimicrobials.
16x100mm glass tube, 6ml fill,
20/pk K128

Campylobacter Blood Agar

For the primary isolation and cultivation of *Campylobacter jejuni* from human fecal specimens.
15x100mm plate, 10/pk A137

Carrot Broth

(See *Strep B Carrot Broth*, page 27)

Casein Agar

For the differentiation of aerobic actinomycetes based on casein proteolysis.
15x100mm plate, 10/pk G122

CCFA Agar (Cycloserin-Cefoxitin Fructose)

For the cultivation and isolation of *Clostridioides difficile*. LokTight™ contact plate,
15x65mm, 10/pk P27

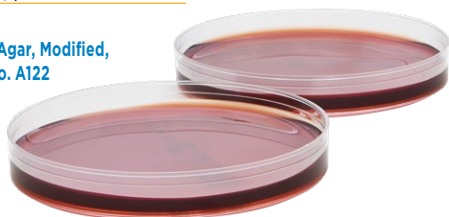
Cellulose Agar, Modified

For use as a general all-purpose growth media for the cultivation of cellulose-utilizing fungi from environmental sources.
15x100mm plate, 28ml deep fill,
10/pk W83

Cetrimide Select Agar, USP

For the selective isolation of *Pseudomonas aeruginosa*.
15x100mm plate, 10/pk G18

Campy Cefex Agar, Modified,
Cat. no. A122



CET/MAC/VJ Triplate
(Cetrimide Select Agar/MacConkey Agar/
Vogel and Johnson Agar)

Section I: CET is for the selective isolation of *Pseudomonas aeruginosa*.

Section II: MacConkey Agar is for the isolation and differentiation of gram-negative bacteria.

Section III: VJ Agar is for the selective isolation of coagulase-positive and mannitol-positive *Staphylococcus aureus*.

15x100mm triplate, 10/pk J314

CGB Agar for Cryptococcus
(Canavanine, Glycine, Bromothymol Blue Agar)

Recommended for the differentiation of *Cryptococcus neoformans* var. *neoformans* and *Cryptococcus gattii* (formerly *Cryptococcus neoformans* var. *gattii*).

15x100mm plate, 10/pk G113

Chocolate Agar
(GC Agar Base with 1% Bovine Hemoglobin & Koenzyme Supplement)

A nutritious medium used for culturing fastidious organisms such as *Haemophilus* spp. and *Neisseria* spp.

15x100mm plate, 10/pk E14

15x100mm plate, 100/pk E14BX

Large, 69ml fill, 15x100mm plate, 10/pk H25

16x100mm tube, 5.5ml slant, 20/pk L37

Chocolate Agar/Martin Lewis Agar with Lincomycin Biplate

Section I: Chocolate Agar is recommended for use in the isolation and cultivation of fastidious microorganisms, particularly *Haemophilus* and *Neisseria* species.

Section II: Martin Lewis with Lincomycin is a selective medium for the recovery of *Neisseria gonorrhoeae* from both genital and oropharyngeal specimens.

15x100mm biplate, 10/pk J44

Chocolate Agar/MTM Biplate
(Chocolate Agar/Modified Thayer Martin Agar)

Section I: Chocolate Agar, for use in the isolation and cultivation of fastidious microorganisms, particularly *Haemophilus* and *Neisseria* species.

Section II: MTM, for the isolation of *Neisseria gonorrhoeae* with suppression of most other gram-negative diplococci, gram-negative bacilli, gram-positive organisms, and yeast.

15x100mm biplate, 10/pk J72

Chocolate Agar with Bacitracin

For selective isolation of *Haemophilus* spp. from respiratory specimens. Chocolate Agar with Bacitracin inhibits most staphylococci, streptococci, *Neseria* spp., and *Micrococcus* spp.

15x100mm plate, 10/pk E11

CIN Agar/MacConkey Agar with Sorbitol Biplate
(Cefsulodin, Irgasan, Novobiocin Agar)

Section I: For the selective isolation of *Yersinia* and *Aeromonas* spp.

Section II: For the detection of sorbitol-negative enterohemorrhagic *E. coli* O157.

15x100mm biplate, 10/pk J49

CIN Agar
(Cefsulodin, Irgasan, Novobiocin Agar)

For the selective isolation of *Yersinia enterocolitica* and *Aeromonas* spp.

15x100mm plate, 10/pk G20

CLED Agar
(Cystine Lactose Electrolyte-Deficient)

For the isolation, enumeration, and presumptive identification of urinary pathogens on the basis of lactose fermentation; controls swarming of *Proteus* spp.

15x100mm plate, 10/pk G223

CNA Agar
(Columbia Agar with 5% Sheep Blood, Colistin and Nalidixic Acid)

For the selective isolation and differentiation of gram-positive cocci.

15x100mm plate, 10/pk A50

15x100mm plate, 100/pk A50BX

15x100mm plate, reduced stacking ring, 10/pk GA50

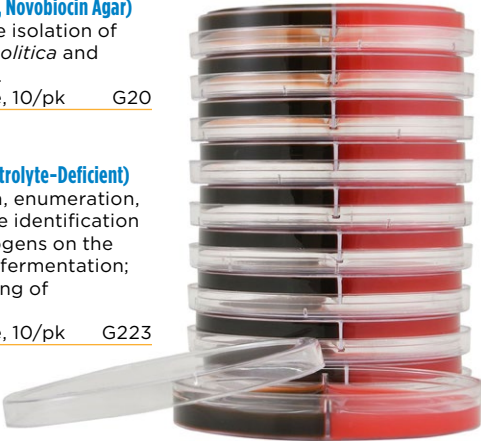
CNA Agar/EMB Agar Biplate
(Columbia Agar with 5% Sheep Blood, Colistin and Nalidixic Acid/Eosin Methylene Blue)

Section I: CNA Agar is recommended for use as a selective growth medium for the isolation and differentiation of gram-positive cocci from clinical and non-clinical specimens which contain mixed flora.

Section II: EMB Agar is recommended for use as selective and differential media for the isolation of gram-negative bacilli from clinical and non-clinical specimens.

15x100mm biplate, 10/pk J52

CNA Agar/EMB Agar Biplate, Cat. no. J52



CNA Agar/MacConkey Agar Biplate
(Columbia Agar with 5% Sheep Blood, Colistin and Nalidixic Acid/MacConkey Agar)

Section I: CNA Agar is recommended for use as a selective growth medium for the isolation and differentiation of gram-positive cocci from clinical and non-clinical specimens which contain mixed flora.

Section II: MacConkey Agar is a selective and differential medium for the isolation of gram-negative bacilli, including coliform organisms and enteric pathogens, on the basis of lactose fermentation.

15x100mm biplate, 10/pk	J62
15x100mm biplate, 100/pk	J62BX

Columbia Agar, USP
For the isolation and cultivation of nonfastidious and fastidious micro-organisms.

15x100mm, 10/pk	G250
-----------------	------

Columbia Agar, 5% Sheep Blood
A general purpose medium for the isolation and cultivation of nonfastidious and fastidious microorganisms.

15x100mm plate, 10/pk	A16
15x100mm plate, 100/pk	A16BX

Columbia CNA Agar with Esculin/HE Agar Biplate
(Colistin and Nalidixic Acid/Hektoen Enteric)

Section I: CNA Agar is recommended for use as a selective growth medium for the isolation and differentiation of gram-positive cocci from clinical and non-clinical specimens which contain mixed flora.

Section II: HE Agar is recommended for the isolation and differentiation of gram-negative enteric pathogens.

15x100mm biplate, 10/pk	J67
-------------------------	-----

E. coli O157 on CT-SMAC,
Cat. no. G129

Cooked Meat Medium
For the cultivation of anaerobic bacteria and the preservation of stock cultures; contains iron filings, hemin, yeast extract, and vitamin K.

16x125mm glass tube, 10ml fill, 20/pk	K19
20x125mm glass tube, 15ml fill, 20/pk	K219

Corn Meal Agar with Tween® 80
Recommended for use in cultivation of fungi and for the inducement of chlamydospore formation by *Candida* spp.

15x100mm plate, 26ml deep fill, 10/pk	W10
---------------------------------------	-----

CT-SMAC (MacConkey Agar with Sorbitol, Cefixime, and Tellurite)
For selection and differentiation of enterohemorrhagic *E. coli* O157.

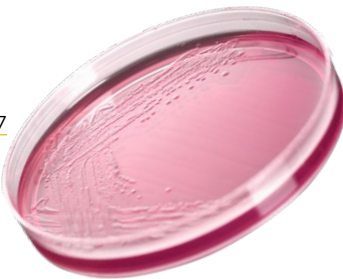
15x100mm plate, 10/pk	G129
-----------------------	------

CTA (Cystine Tryptic Agar)
For fermentation testing of fastidious bacteria.

13x100mm polycarbonate tube, 3ml deep, 20/pk	Y11
CTA Base	
With Dextrose	Y12
With Lactose	Y13
With Maltose	Y14
With Mannitol	Y15
With Sucrose	Y16
With Sorbitol	Y17
With Trehalose	Y20
With Salicin	Y24

Czapek Yeast Agar
For the cultivation and maintenance of heat-resistant filamentous fungi from foods or environmental sources.

15x100mm plate, 26ml deep fill, 10/pk	W117
---------------------------------------	------



D/E Neutralizing Agar (Dey/Engley)
For neutralizing and evaluating the efficacy of antiseptics and disinfectants.

LokTight™ 15x65mm, contact plate, 10/pk	P99
15x100mm plate, 10/pk	G224
LokTight™ contact plate, irradiated, triple bagged 15x65mm, 10/pk	P580

D/E Neutralizing Broth (Dey/Engley)
For neutralizing and evaluating the efficacy of antiseptics and disinfectants.

16x125mm tube, 10ml fill, 20/pk	K108
59ml polypropylene bottle, 45ml fill, 25/pk	U332
180ml polycarbonate jar, 90ml fill, 12/pk	U75
1L polycarbonate bottle, 750ml fill, 10/pk	U76

Deionized Water
For the preparation of dilutions and suspensions.

50ml centrifuge tube, 5ml fill, 25/pk	X58
50ml centrifuge tube, 10ml fill, 25/pk	X61
13x100mm tube, 5ml fill, 20/pk	K187
16x125mm glass tube, 9ml fill, 20/pk	K259
20x150mm glass tube, 15ml fill, 20/pk	K186
125ml polypropylene bottle, 100ml fill, 12/pk	U85
500ml glass bottle, 500ml fill, 10/pk	U324
1L polycarbonate bottle, 1,000ml fill, 10/pk	U284

Deionized Water with Tween® 80, 0.1%
For the preparation of microbial suspensions.

125ml polycarbonate bottle, 100ml fill, 16/pk	U259
---	------

Derm-Duet™ II RSM/DTM Biplate (Rapid Sporulation Medium/ Dermatophytes Test Medium)
For the detection of dermatophytic fungi.

15x100mm biplate, 10/pk	J175
-------------------------	------

EnviroTrans™
Swab Rinse Kit

A ready-to-use swab and a pre-filled tube with your choice of solutions to fit your specific needs! Collect and transport environmental samples with efficiency and ease. A Dacron swab is affixed to a screw cap for easy handling. 15x75mm polypropylene tube, with Dacron swab attached to screw cap:

0.85% Saline	
0.5ml, 20/box	SRK05
2ml, 20/box	SRK30
5ml, 20/pk	SRK35

Barney Miller Broth	
No swab, 5ml, 20/pk	SRK100

Butterfield's Phosphate Buffer	
1ml, 20/pk	SRK90

D/E Neutralizing Broth	
5ml, 20/pk	SRK45

Letheen Broth	
5ml, 20/pk	SRK25

Neutralizing Buffer	
2ml, 20/box	SRK20

5ml, 20/pk	SRK15
------------	-------

Neutralizing Saline	
5ml, 20/box	SRK55

NaCl with Sodium Thiosulfate	
5ml, 20/pk	SRK95

Esculin Agar	
For the detection of esculin hydrolysis by microorganisms. It is particularly useful in the differentiation of <i>Bacteroides</i> spp.	
16x100mm glass tube,	
6.5ml slant, 20/pk	L29

FB Broth	
(Fastidious Bacteria Broth)	
For the enriched cultivation of <i>Neisseria</i> , <i>Haemophilus</i> , <i>Streptococcus</i> , <i>Corynebacteria</i> , and other fastidious bacteria.	
13x80mm polypropylene tube,	
4ml fill, 100/pk	R75BX
16x125mm glass tube, 10ml fill,	
20/pk	K31

FID Agar	
(Fluorescence-Indole-Denitrification)	
For the identification of non-fermentative bacilli by fluorescein pigment production, nitrate reduction, and indole production.	
13x100mm glass tube, 4.5ml fill,	
10/pk	Y21

Fluid A, USP	
A rinsing and diluting fluid for use in USP testing protocols.	
100ml glass serum bottle,	
100ml fill, 20/pk	U109
125ml polypropylene bottle,	
100ml fill, 12/pk	U19
236ml polypropylene bottle,	
90ml fill, 12/pk	U17

236ml Boston round glass bottle, 200ml fill, 12/pk	U436
500ml Polycarbonate bottle, 300ml fill, 10/pk	U349
500ml glass bottle, 300ml fill, 10/pk	U342
473ml glass bottle, 600ml fill, 10/pk	U249
1L polycarbonate bottle, 1,000ml fill, 10/pk	U208

Fluid D, USP	
A rinsing and diluting fluid for use in USP testing protocols.	
118ml Boston round glass bottle, 100ml fill, 20/pk	U437
180ml wide mouth glass jar, 100ml fill, 12/pk	U135
Polycarbonate bottle 500ml, needle port, 300ml fill, 10/pk	U210
500ml, needle port, 500ml fill, 10/pk	U215
1L, bottle, 1,000ml fill, 10/pk	U115
100ml glass bottle, needle port, crimp cap, 100ml fill, 20/pk	U110

Fluid D with 1% Tween® 80	
For use as a rinsing and diluting fluid.	
125ml polycarbonate bottle,	
100ml fill, 12/pk	U413

Fluid K, USP	
A rinsing and diluting fluid for use in USP testing protocols.	
500ml glass bottle with needle port septum, 300ml fill, 10/pk	U348
1L polypropylene bottle,	
1,000ml fill, 10/pk	U206

Fraser Broth, Modified	
For the selective enrichment of <i>Listeria</i> spp., without ferric ammonium citrate.	
16x125mm glass tube, 10ml fill, 20/pk	K98
500ml polycarbonate bottle, 225ml fill, 10/pk	U410

Frey Medium Agar	
For use in the cultivation and isolation of <i>Mycoplasma</i> species.	
15x60mm plate, 10/pk	G381

FTM with Indicator, USP	
(Fluid Thioglycollate Medium)	
Recommended for the cultivation of aerobic, microaerophilic, and anaerobic microorganisms in normally sterile materials.	

Glass Tube	
ReadyRack™, 16x125mm, 10ml fill, 80/pk	K212BX
16x125mm, flush septa cap, 10ml fill, 20/pk	K282
20x125mm, 10ml fill, 20/pk	K121
20x125mm, 15ml fill, 20/pk	K84

Glass Septum Bottle, Needle Port	
20ml, 15ml fill, 50/pk	U66
20ml, 20ml fill, 50/pk	U68
100ml, 100ml fill, 20/pk	U84
200ml, 150ml fill, 10/pk	U207
500ml, 300ml fill, 10/pk	U427
500ml, 500ml fill, 10/pk	U273

Glass Bottle	
59ml, 40ml fill, 24/pk	U479
118ml Boston round, 100ml fill, 20/pk	U121
236ml Boston round, 200ml fill, 12/pk	U434

Glass Jar	
236ml wide mouth, 100ml fill, 12/pk	U41

FTM Enriched	
(Fluid Thioglycollate with Hemin and Vitamin K)	
For the cultivation of aerobic, microaerophilic, and anaerobic microorganisms in normally sterile materials.	
16x125mm glass tube, 10ml fill, 20/pk	K73

GBS Detect™

For the isolation and differentiation by enhanced hemolysis of gamma hemolytic Group B *Streptococcus*.
(See *Strep B Carrot Broth™* page 27)

15x100mm plate, 10/pk A300

15x100mm plate, 100/pk A300BX

Reduced stacking ring,
15x100mm plate, 10/pk GA300

GCTT Broth

(Giolitti-Cantoni Modified)

For the detection and enumeration of coagulase-positive staphylococci from food and animal feed.

125ml polycarbonate bottle, 90ml fill, 16/pk U416

GN Broth

(gram-negative)

For the selective enrichment of *Salmonella* and *Shigella* spp.
13x80mm polypropylene tube, 4ml fill, 100/pk R76BX

13x100mm polycarbonate tube, 6ml fill, 20/pk K01

16x125mm glass tube, 10ml fill, 20/pk K39

Granada Medium

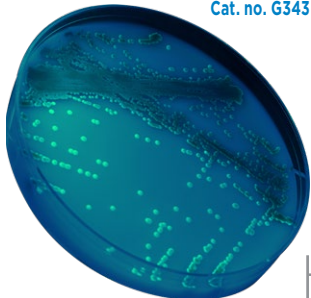
For the qualitative detection of Group B *Streptococcus* (GBS) from LIM Broth enrichment cultures of vaginal/rectal swabs from antepartum women.

15x100mm plate, 10/pk G123

Group A Beta Strep Agar

For the selective isolation of Group A streptococci only (*Streptococcus pyogenes*)
15x100mm plate, 10/pk A72

Candida auris under UV light on HardyCHROM™ *Candida + auris*, Cat. no. G343



Haemophilus ID Quadplate

For the differentiation of *Haemophilus* spp.

Section II: RTF Casman Medium, Modified (X- and V-factors) is supplemented with sheep blood in order to supply hemin (X-factor), and nicotinamide adenine dinucleotide (NAD or V-factor) which are growth factors required by *Haemophilus influenzae*.

Section II: Tryptic Soy Agar (TSA) with Hemin (X-factor)

Section III: Tryptic Soy Agar (TSA), modified with NAD (V-factor)

Section IV: Chocolate Agar (X- and V-factors)
15x100mm quadplate, 10/pk J82

Hajna Tetrathionate (TT) Broth

For the selective enrichment of *Salmonella* spp. from food.

16x125mm glass tube, 10ml fill, 20/pk K289

HardyCHROM™ Bcc (Burkholderia cepacia complex)

USP <60> describes tests to aid in detecting members of the Bcc group in non-sterile products. HardyCHROM™ Bcc is a chromogenic agar for the selective isolation and differentiation of *Burkholderia cepacia* and other members of the Bcc group based on colony color.
15x100mm plate, 10/pk G335

HardyCHROM™ BluEcoli™

BluEcoli™ Urine Biplate is a urine culture media, consisting of Blood Agar on one side and BluEcoli™ Agar on the other side, which is used for the isolation of urinary pathogens and for the identification of *E. coli*. Found to be 98.5% sensitive and 100% specific for urine specimens. No further testing required: 75 to 90% of positive urine specimens are *E. coli*.
15x100mm biplate, 10/pk J123

HardyCHROM™ Campylobacter

For the selective isolation and chromogenic differentiation of *Campylobacter* spp. from direct stool cultures or from food or poultry samples.

15x100mm plate, 10/pk G339

HardyCHROM™ Candida

A selective and differential culture medium that facilitates the isolation and differentiation of clinically important yeast species.

- Useful in detecting mixed yeast infections
- Inhibits the majority of bacterial species

15x100mm plate, 10/pk G301

HardyCHROM™ Candida + auris

For the selective isolation and differential identification of *Candida* species. The medium allows for the differentiation of *Candida albicans*, *Candida tropicalis*, *Candida krusei*, and *Candida auris* based on colony morphology, color, and positive UV fluorescence.
15x100mm plate, 10/pk G343

HardyCHROM™ CRE (Carbapenem-Resistant Enterobacterales)

For the qualitative and presumptive detection from stool specimens of *Escherichia coli* that are non-susceptible to carbapenems as pink colonies and KES (*Klebsiella aerogenes*, *Klebsiella oxytoca*, *Klebsiella pneumoniae*, *Enterobacter cloacae* complex, and *Serratia marcescens*) that are non-susceptible to carbapenems as blue colonies.
15x100mm plate, 10/pk G323

Escherichia coli on HardyCHROM™ CRE, Cat. no. G323



HardyCHROM™

HardyCHROM™ CRE/ ESBL Biplate

Section I: CRE Medium, for the qualitative and presumptive detection from stool specimens of *Escherichia coli* that are non-susceptible to carbapenems as pink colonies and KES (*Klebsiella aerogenes*, *Klebsiella oxytoca*, *Klebsiella pneumoniae*, *Enterobacter cloacae* complex, and *Serratia marcescens*) that are non-susceptible to carbapenems as blue colonies.

Section II: ESBL medium, for the qualitative and presumptive detection from stool specimens of 1) Enterobacteriales that are potentially non-susceptible to ceftazidime and cefpodoxime; and 2) Extended-spectrum beta-lactamase (ESBL)-producing *Escherichia coli*, *Klebsiella pneumoniae*, and *Klebsiella oxytoca*.

15x100mm biplate, 10/pk J28

HardyCHROM™ ECC (*E. coli* and Coliforms)

For the detection, differentiation, and enumeration of *Escherichia coli* and other coliforms.

15x100mm plate, 10/pk G303

LokTight™ contact plate,
15x65mm, 10/pk P17

HardyCHROM™ ESBL (Extended-Spectrum Betalactamase)

For the qualitative and presumptive detection from stool specimens of: 1) Enterobacteriales that are potentially non-susceptible to ceftazidime and cefpodoxime; and 2) Extended-spectrum betalactamase (ESBL)-producing *Escherichia coli*, *Klebsiella pneumoniae* and *Klebsiella oxytoca*.

15x100mm plate, 10/pk G321

HardyCHROM™ Group A Strep

For the selective cultivation and differential isolation of Group A *Streptococcus* (*S. pyogenes*) from specimens based on colony color.

15x100mm plate, 10/pk G337

HardyCHROM™ HUrBi™ (Urine Biplate)

For the cultivation, differentiation and enumeration of various gram-negative and gram-positive bacteria, and yeast based on colony color and morphology. Isolate gram-positive organisms and yeast on side I of the biplate and gram-negative organisms on side II of the biplate.

15x100mm biplate, 10/pk J100

HardyCHROM™ Listeria

For the isolation, differentiation, and enumeration of *Listeria monocytogenes* from food and environmental samples by colony color and appearance.

15x100mm plate, 10/pk G317

HardyCHROM™ MRSA

For the qualitative detection of nasal colonization by methicillin-resistant *Staphylococcus aureus* (MRSA).

15x100mm plate, 10/pk G307
15x100mm plate, reduced
stacking ring, 10/pk GA307

HardyCHROM™ MRSA Contact Plate

For use in the cultivation of methicillin resistant *Staphylococcus aureus* (MRSA) from environmental surfaces to aid in the prevention and control of MRSA infections in health care settings.

LokTight™ contact plate,
15x65mm, 10/pk P14

HardyCHROM™ MRSA/Staph aureus Biplate

Section I: HardyCHROM™ MRSA, for the qualitative detection of nasal colonization by methicillin-resistant *Staphylococcus aureus* (MRSA).

Section II: HardyCHROM™ Staph aureus, for the isolation, differentiation, and enumeration of *Staphylococcus aureus* by colony color.

15x100mm biplate, 10/pk J35

Staphylococcus aureus on
HardyCHROM™ MRSA, Cat. no. G307

HardyCHROM™ O157

For the isolation of enterohemorrhagic *E. coli* O157.
15x100mm plate, 10/pk G305

HardyCHROM™ Sakazakii

For the selective isolation and differentiation of *Cronobacter* (Enterobacter) *sakazakii* from other members of the order Enterobacteriales.

15x100mm plate, 10/pk G315

HardyCHROM™ Salmonella

For the selective isolation and differentiation of *Salmonella* spp. from other members of the Enterobacteriales based on colony color.

15x100mm plate, 10/pk G309

HardyCHROM™ Salmonella/XLT-4 Agar Biplate

Section I: HardyCHROM™ Salmonella, For the selective isolation and differentiation of *Salmonella* spp. from other members of the Enterobacteriales based on colony color.

Section II: XLT-4 Agar is a highly selective plating medium for the detection and isolation of non-typhi *Salmonella* species.

15x100mm biplate, 10/pk J37

HardyCHROM™ SS NoPRO

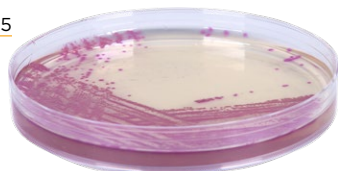
For the selective isolation and differentiation of *Salmonella* and *Shigella* spp. from stool. The enhanced inhibition of *Proteus* reduces the expense involved in working up non-pathogens that could mimic enteric pathogens.

15x100mm plate, 10/pk G327

HardyCHROM™ Staph aureus

For the isolation, differentiation, and enumeration of *Staphylococcus aureus* by colony color.

15x100mm plate, 10/pk G311



HardyCHROM™ UTI

For the cultivation, differentiation, and enumeration of urinary tract pathogens based on colony color and morphology.
15x100mm plate, 10/pk G313
HardyCHROM™ UTI/Blood Agar, 15x100mm biplate, 10/pk J119

HardyCHROM™ Vibrio

For the isolation and differentiation of pathogenic *Vibrio* spp. from food and environmental sources. HardyCHROM™ Vibrio was developed as a medium for differentiating *Vibrio cholerae*, *V. vulnificus*, *V. alginolyticus* and *V. parahaemolyticus* from other *Vibrio* spp. based on colony color and fluorescence under UV light on a single plate.
15x100mm plate, 10/pk G319

Hayflick Agar

For use in the cultivation and isolation of *Mycoplasma* species.
15x60mm plate, 10/pk G385

Hayflick Medium Broth

For use in the cultivation and isolation of *Mycoplasma* species.
125ml polycarbonate bottle, 100ml fill, 16/pk U335

HE Agar (Hektoen Enteric)

For the selective isolation of pathogenic, gram-negative, enteric bacteria, such as *Salmonella* spp. and *Shigella* spp.
15x100mm plate, 10/pk G63

Hemin and Vitamin K Solution

A growth supplement for fastidious anaerobic bacteria.
16x125mm glass tube, 10ml fill, 20/pk Z237

Horse Blood Agar, 5%

Recommended for the cultivation of nonfastidious and fastidious microorganisms such as *Haemophilus* spp.
15x100mm plate, 10/pk A149

HTM Agar (Haemophilus Test Medium)

For disk diffusion susceptibility testing of *Haemophilus* spp.
15x100mm plate, 10/pk G33
15x150mm large plate, 72ml fill, 10/pk H07

Hunt Broth

For the selective enrichment of *Campylobacter jejuni*, *C. coli*, and *C. lari* from poultry rinsate, poultry carcass sponge samples, raw poultry product samples, and/or environmental sponge samples per USDA FSIS MLG 41.
125ml polycarbonate bottle, 30ml fill, 16/pk U446
1L PET Bottle, 950ml fill, 10/pk U341

Inhibitory Mold Agar

For the selective isolation of pathogenic fungi, contains chloramphenicol for inhibition of bacteria.
15x100mm plate, 28ml fill, 10/pk W25
25x100mm plate, 59ml fill, 5/pk W58
20x125mm glass tube, 10ml slant, 20/pk L47
HardyFlask™, 12ml slant, 20/pk X20

Inhibitory Mold Agar with Gentamicin

For the selective isolation of pathogenic fungi; contains chloramphenicol and gentamicin.
15x100mm plate, 26ml deep fill, 10/pk W27
20x125mm glass tube, 10ml slant, 20/pk L49

Iodine-Iodide Solution

For use with Tetrathionate Broth, Cat. nos. K65, U165, and K164.
59ml glass bottle, 50ml fill, Each Z129
1L polycarbonate bottle, 990ml fill, Each Z139

Jordan's Tartrate Agar

For the differentiation of *Enterobacteriaceae* based on tartrate utilization.
13x100mm glass tube, 6ml deep, 20/pk K26

KF Streptococcus Agar

For the selective isolation and enumeration of fecal streptococci (including *Enterococcus*).
15x100mm plate, 10/pk G376

KIA (Kligler Iron Agar)

For differentiating certain members of the *Enterobacteriaceae* by demonstrating hydrogen sulfide production and the fermentation of dextrose and lactose.
13x100mm glass tube, 4.5ml slant, 20/pk R70
16x125mm glass tube, 8ml slant, 20/pk L70

Lactobacilli MRS Agar

For the isolation, enumeration, and cultivation of *Lactobacillus* spp.
15x60mm plate, 10/pk G197
15x100mm plate, 10/pk G117
250ml polycarbonate bottle, 100ml fill, 12/pk U476
500ml polycarbonate bottle, 400ml fill, 10/pk U204

Lactobacilli MRS Broth

For the cultivation of lactobacilli.
16x125mm glass tube, 9ml fill, 20/pk K15
16x125mm tube, 9ml fill, with Durham tube, 20/pk K17
125ml polycarbonate bottle, 99ml fill, 12/pk U314
500ml polycarbonate bottle, 500ml fill, 10/pk U203

Lactose Broth

For the detection of coliforms in food, dairy products, and water. These formulations can also be used to pre-enrich samples for the recovery of *Salmonella* species.
354ml wide mouth glass jar, 225ml fill, 12/pk U146
500ml polypropylene bottle, 225ml fill, 10/pk U145

Lauryl Tryptose Broth

For the detection of coliforms.

Single Strength

16x125mm tube, 10ml fill,
with Durham tube, 20/pk K61

Single Strength

20x125mm tube, 13ml fill,
with Durham tube, 20/pk K33

Double Strength

20x125mm tube, 10ml fill,
with Durham tube, 20/pk K32

**Lauryl Tryptose Broth
with MUG**

For use in the detection of
coliforms in water, waste water,
and foods.

Single Strength

20x125mm tube, 10ml fill,
with Durham tube, 20/pk K238

Double Strength

20x150mm tube, 10ml fill,
with Durham tube, 20/pk K338

**LB Agar with
Carbenicillin**

For the cultivation of bacteria
used in molecular biology
studies.

15x100mm plate, 10/pk G403

Leeds Medium

For the selective isolation and
differentiation of
Acinetobacter spp.

15x100mm plate, 10/pk G261

Lethéen Agar

For evaluating the bactericidal
activity of quaternary
ammonium compounds.

15x100mm plate, 10/pk G42

20x125mm glass tube,
18ml deep, 20/pk Q18

Lethéen Agar, Modified

For evaluating the bactericidal
activity of quaternary
ammonium compounds.

500ml Boston round glass,
400ml fill, 12/pk U418

**Lethéen Agar, Modified
with Tween® 80, 1.5%**

For evaluating the bactericidal
activity of quaternary
ammonium compounds.

15x100mm plate,
28ml deep fill, 10/pk W55

**Lethéen Agar/
MacConkey Agar Biplate**

Section I: Lethéen Agar, for
evaluating the bactericidal
activity of quaternary
ammonium compounds.

Section II: MacConkey Agar,
for the isolation and
differentiation of gram-
negative organisms.

15x100mm biplate, 10/pk J110

Lethéen Broth

For determining the phenol
coefficient of cationic surface-
active materials.

16x125mm glass tube, 9ml fill,
20/pk K207

180ml wide mouth jar,
99ml fill, 12/pk U40

16x125mm glass tube, 10ml fill,
20/pk K106

500ml polypropylene bottle,
270ml fill, 10/pk U458

500ml polypropylene bottle,
400ml fill, 10/pk U471

1L polypropylene bottle,
1,000ml fill, 10/pk U371

236ml wide mouth glass jar,
90ml fill, 12/pk U39

Lethéen Broth, Modified

For use in microbial recovery
from personal care products
and for the neutralization
of quaternary ammonium
compounds in the testing of
germicidal activity.

16x125mm glass tube, 9ml fill,
20/pk K293

236ml wide mouth glass jar,
90ml fill, 12/pk U293

500ml polypropylene bottle,
250ml fill, 10/pk U415

1L polypropylene bottle,
1,000ml fill, 10/pk U355

**Lethéen Broth with
2x L&T**

(Lecithin and Tween® 80)

For use in evaluating the
bactericidal activity of
quaternary ammonium
compounds.

1L polypropylene bottle,
1,000ml fill, 10/pk U329

**LIA
(Lysine Iron Agar)**

For use in differentiating
certain members of the
Enterobacteriaceae, especially
Salmonella species, by
demonstrating hydrogen
sulfide production and
the decarboxylation or
deamination of lysine.

13x100mm tube, 4.5ml slant,
20/pk R22

16x125mm tube, 8ml slant,
20/pk L25

LIM Broth

For the selective enrichment
of group B streptococci
(*Streptococcus agalactiae*)
from anovaginal specimens
from pregnant women.

13x80mm polypropylene tube,
2ml fill, compatible with WASP®
instrument.

100/pk R73BX

13x100mm polycarbonate tube,
5ml fill, 20/pk L57

Litmus Milk Broth

For the determination of
bacterial action upon milk.

13x100mm glass tube, 5ml fill,
20/pk K34

**Liver Infusion Agar
Selective
(Liver Infusion Selective Agar with
Polymyxin B, Nalidixic Acid, Vancomycin)**

For the selective isolation of
fungi.

15x100mm plate, 26ml deep fill,
10/pk W95

**LJ Graft Modification
(Lowenstein Jensen)**

For the selective isolation of
Mycobacterium spp.; contains
penicillin, nalidixic acid, and
RNA.

20x125mm glass tube,
10ml slant, 20/pk C23

HardyFlask™, 12ml slant,
20/pk X23

**LJ Medium
(Lowenstein Jensen)**

For use in the semiquantitative
catalase test to aid in
differentiation of
Mycobacterium spp.

20x125mm glass tube,
5ml deep, 20/pk C27

LJ Medium (Lowenstein Jensen) For the cultivation of <i>Mycobacterium</i> spp. 20x125mm glass tube, 10ml slant, 20/pk C21 HardyFlask™, 12ml fill, 20/pk X22	m E Agar (Membrane-Enterococcus) For performing membrane filtration technique for enterococci in environmental waters. 15x60mm plate, 10/pk G71	m Staphylococcus Broth For the isolation and differentiation of <i>Staphylococcus</i> spp. by membrane filtration. 16x125mm glass tube, 10ml fill, 20/pk K213
LJ Selective Medium (Lowenstein Jensen) Contains lincomycin, nalidixic acid, and cyclohexamide. For the selective isolation of <i>Mycobacterium</i> spp. 20x125mm glass tube, 10ml slant, 20/pk C25	m EI Agar (Membrane-Enterococcus Indoxyl-β-D-Glucoside) For the selective chromogenic detection and enumeration of enterococci. 15x60mm plate, 10/pk G124	MacConkey Agar, USP For isolation and differentiation of gram-negative bacteria. 15x100mm plate, 10/pk G35 15x100mm plate, 100/pk G35BX 15x100mm plate, reduced stacking ring, 10/pk GA35 LokTight™ contact plate, 15x65mm, 10/pk P47
LJ with Iron (Lowenstein Jensen) For the cultivation of <i>Mycobacterium</i> spp. HardyFlask™, 12ml slant, 20/pk X21 20x125mm glass tube, 10ml slant, 20/pk C37	m Endo LES Agar (Membrane-Endo Laurance Experimental Station) For the enumeration of coliforms. 15x60mm plate, 10/pk G128 15x100mm plate, 10/pk G28	MacConkey Agar/ MacConkey Agar Biplate For the culture and isolation of gram-negative bacteria. 15x100mm biplate, 10/pk J118
LJ with Pyruvate (Lowenstein Jensen) For the cultivation of <i>Mycobacterium</i> spp., especially <i>Mycobacterium bovis</i> . HardyFlask™, 12ml slant, 20/pk X19 With Pyruvate, 20x125mm glass tube, 10ml slant, 20/pk C28	m FC Agar with 1% Rosolic Acid (Membrane-Fecal Coliform Medium) For the detection of fecal coliforms in water samples by membrane filtration and elevated temperature. 11x50mm plate, 10/pk G272 15x60mm plate, 10/pk G126	MacConkey Agar with Ciprofloxacin For the selective isolation of non-susceptible Ciprofloxacin, gram-negative microorganisms. 15x100mm plate, 10/pk G258
LJ with Sodium Chloride (Lowenstein Jensen) For testing <i>Mycobacterium</i> species for salt tolerance. 20x125mm glass tube, 10ml slant, 20/pk C29	m HPC Agar (Membrane-Heterotrophic Plate Count) For the enumeration of heterotrophic organisms. 15x60mm plate, 10/pk G95 15x100mm plate, 10/pk G195 20x125mm glass tube, 18ml deep, 20/pk Q39	MacConkey Agar with Sorbitol For the detection of enterohemorrhagic <i>Escherichia coli</i> O157:H7. 15x100mm plate, 10/pk G36
LKV Agar (Laked Sheep Blood, Kanamycin, Vancomycin) For the isolation and partial identification of anaerobic microorganisms. 15x100mm plate, 10/pk A60	m PA Agar (Membrane-Pseudomonas aeruginosa) For the cultivation and enumeration of <i>Pseudomonas aeruginosa</i> . 15x60mm plate, 10/pk G133	MacConkey/EMB Biplate (Eosin Methylene Blue) Section I: MacConkey Agar is recommended for use as a selective and differential medium for the isolation of gram-negative bacilli, on the basis of lactose fermentation. Section II: EMB Agar is recommended for use as selective and differential media for the isolation of gram-negative bacilli (including coliform organisms and enteric pathogens) from clinical and nonclinical specimens. 15x100mm biplate, 10/pk J58
Loeffler's Medium For the cultivation of <i>Corynebacterium diphtheriae</i> . 16x100mm glass tube, 5.5ml slant, 20/pk L28		

LJ with Iron,
Cat. no. X21



MacConkey Broth

For the cultivation of gram-negative, lactose fermenting bacilli.
13x100mm polycarbonate tube, with Durham tube, 5ml fill, 20/pk K194
16x125mm glass tube, 10ml fill, 20/pk K196
180ml wide mouth polycarbonate jar, 100ml fill, 12/pk U125

Malonate Broth

For the differentiation of *Enterobacteriaceae* based on malonate utilization.
13x100mm glass tube, 5ml fill, 20/pk K36

Malt Extract Agar

For the cultivation and enumeration of yeasts and molds.
15x100mm plate, 26ml deep fill, 10/pk W28

Malt Extract Agar with 0.01% Chloramphenicol

For the cultivation, isolation, and maintenance of yeasts and molds.
16x100mm tube, 5.5ml slant, 10/pk L128

Malt Extract Agar with Lecithin and Tween®

For the cultivation, isolation, and maintenance of yeasts and molds.
LokTight™ contact plate, 15x65mm, 10/pk P93

Malt Extract Agar with Chloramphenicol

For the cultivation, isolation, and maintenance of yeasts and molds.
15x100mm plate, 26ml deep fill, 10/pk W80
LokTight™ contact plate, 15x65mm, 10/pk P80

Mannitol YEP Agar, pH 6.2 (Yeast Extract Peptone)

For use in the cultivation and enumeration of microorganisms and growth promotion testing for aloe products.
15x100mm plate, 10/pk G39

Marine Agar

For the cultivation of heterotrophic marine bacteria.
15x100mm plate, 10/pk G226

Martin Lewis Agar with Lincomycin

For the selective isolation of *Neisseria gonorrhoeae*.
Pill pocket plate with bag and CO₂ tablet, 10/pk E31
15x100mm plate, 10/pk E39

McFarland Latex Standard

McFarland Latex Standards are used as turbidity standards for adjusting densities of bacterial suspensions. McFarland Latex Standards are more stable and offer a significantly longer shelf-life than the original barium sulfate standards.
16x100mm glass tube, 8ml fill, Each. MLO5
0.5 ML05
1 ML1
2 ML2
3 ML3
4 ML4
5 ML5
6 ML6
7 ML7
8 ML8

MGP Broth

Used to differentiate enterococci based on the ability to acidify the carbohydrate methyl-alpha-D-glucopyranoside (MGP).
13x100mm tube, 2ml fill, 20/pk Y25

Middlebrook 7H10 Agar

For the cultivation of *Mycobacterium* spp.
15x100mm plate, 26ml deep fill, 10/pk W30
20x125mm glass tube, 10ml slant, 20/pk C34
HardyFlask™, 12ml slant, 20/pk X26

Middlebrook 7H10 Agar with 10% Human Blood

For the isolation and cultivation of *Mycobacterium* spp., including *M. genavense*.
20x125mm glass tube, 10ml slant, 20/pk C42

Middlebrook 7H11/7H11 Selective Agar Biplate

For the cultivation of *Mycobacterium* spp.
15x100mm biplate, 10/pk J75

Middlebrook 7H11 Agar

For the cultivation of *Mycobacterium* spp.
15x100mm plate, 28ml deep fill, 10/pk W35
20x125mm glass tube, 10ml slant, 20/pk C36
20x125mm glass tube, 10ml slant, 100/pk C36BX
HardyFlask™, 12ml slant, 20/pk X25

Middlebrook 7H11 Selective Agar

For selective isolation of *Mycobacterium* spp.; contains carbenicillin, amphotericin B, polymyxin B, and trimethoprim lactate.
20x125mm glass tube, 10ml slant, 20/pk C38
20x125mm glass tube, 10ml slant, 100/pk C38BX
15x100mm plate, 28ml deep fill, 10/pk W40
HardyFlask™, 12ml slant, 20/pk X28

Middlebrook 7H11 Agar, Thin Pour

For the isolation and detection of mycobacteria using the micro-colony method. Thin pour plate for microscopic examination. Use with MycoSeal™, Cat. no. SS9225. SpaceSaver™ plate, 10x100mm, thin pour, 15/pk SP57

Middlebrook 7H9 Broth

For the cultivation of *Mycobacterium* spp.
16x125mm glass tube, 10ml fill, 20/pk C32
20x150mm glass tube, 25ml fill, 20/pk C24

Middlebrook 7H9 Broth with Tween® 80

For the cultivation of *Mycobacterium* spp.
16x125mm glass tube, 5ml fill,
20/pk C62

MIL Medium (Motility, Indole, Lysine)

For differentiating *Enterobacteriaceae* on the basis of motility, indole production, lysine-decarboxylation and lysine-deamination.
16x100mm glass tube,
8ml deep, 20/pk Q09

MIO Medium (Motility, Indole, Ornithine)

For the determination of motility, indole, and ornithine decarboxylation of enteric bacilli.
13x100mm glass tube,
4ml deep fill, 20/pk R24
16x100mm glass tube,
6.5ml deep fill, 20/pk Q20

Modified ALP Media

Used to aid in the identification of non-fermentative gram-negative bacilli.
13x100mm glass tube,
3ml slant, 10/pk. Y62
With Arabinose Y62
With Sucrose Y69

Modified Buffered Peptone Water with Pyruvate, Single Strength

For the selective enrichment of enterohemorrhagic *E. coli* (EHEC) from food samples.
ACV Supplement not included.
500ml polycarbonate bottle,
500ml fill, 10/pk U289

Modified Listeria Enrichment Broth

For the selective enrichment of *Listeria monocytogenes*.
500ml polycarbonate bottle,
225ml fill, 10/pk U167

Modified Lysine Iron Agar (MLIA)

For the selective and differential isolation of *Salmonella* spp. from food.
15x100ml plate, 10/pk G86

Moeller's Decarboxylase Media

For the differentiation of gram-negative enteric bacilli based on the decarboxylation reaction of amino acids.
16x125mm glass tube,
5ml fill, 20/pk, Y41
Base Medium, Control Y41
With Arginine Y42
With Lysine Y43
With Ornithine Y44

Motility Nitrate Medium

For the detection of motility and nitrate reduction of non-fermentative bacilli.
13x100mm glass tube,
3ml deep fill, 20/pk Y23

Motility Test Medium with TTC

For the detection of motility in gram-negative enteric bacilli. TTC is added to enhance visualization of bacterial growth.
16x100mm glass tube,
8ml deep, 20/pk Q11

Motility Test Medium without TTC

For the detection of motility in bacteria, without triphenyltetrazolium chloride (TTC) growth indicator.
16x100mm glass tube,
8ml deep, 20/pk Q10

MRSA Screen Plate (Methicillin-resistant *Staphylococcus aureus*)

For screening *Staphylococcus aureus* isolates for resistance to methicillin, nafcillin and oxacillin.
15x100mm plate, 10/pk G47

MR-VP Broth (Methyl Red and Voges-Proskauer)

For use in the performance of the Voges-Proskauer and Methyl Red tests as an aid in the identification of enteric gram-negative bacilli.
13x100mm polycarbonate tube,
5ml fill, 20/pk K37
13x100mm polycarbonate tube,
2ml fill, 20/pk K237

MSA, USP (Mannitol Salt Agar)

For the selective isolation and differentiation of pathogenic staphylococci.
15x100mm plate, 10/pk G40
LokTight™ contact plate,
15x65mm, 10/pk P98

MSA with Oxacillin (Mannitol Salt Agar with 4µg/ml Oxacillin)

For the simultaneous detection and differentiation of methicillin-resistant *Staphylococcus* spp.
15x100mm plate, 10/pk G97

Mueller Hinton Agar

For antimicrobial susceptibility testing of non-fastidious bacteria using the disk diffusion (Kirby-Bauer) method.
15x100mm plate, 10/pk G45
15x150mm large plate, 69ml fill,
10/pk H11

Mueller Hinton Agar with Blood (Mueller Hinton Agar with 5% Sheep Blood)

For disk diffusion (Kirby-Bauer) susceptibility testing of *Streptococcus* spp., including *Streptococcus pneumoniae*.
15x100mm plate, 10/pk A59
15x150mm large plate, 72ml fill,
10/pk H21

Mueller Hinton Agar with Chocolate

For the cultivation of fastidious microorganisms.
15x100mm plate, 10/pk E20



Modified Buffered Peptone Water with Pyruvate, Single Strength, Cat. no. U289

Mueller Hinton Broth

For the preparation of suspensions for disk diffusion (Kirby-Bauer) susceptibility testing.

13x100mm glass tube, 3ml fill, 20/pk	R38
16x100mm glass tube, 5ml fill, 20/pk	K91
16x125mm glass tube, 10ml fill, 20/pk	K38

Mycobiotic Agar

For use in the isolation of pathogenic fungi from clinical specimen.

15x100mm plate, 26ml deep fill, 10/pk	W50
20x125mm glass tube, 10ml slant, 20/pk	L45
HardyFlask™, 12ml slant, 20/pk	X30

Mycoplasma Agar

For the cultivation of *Mycoplasma* and the detection of *Mycoplasma* contamination in biologics and biological processes.

15x60mm plate, 10/pk	G362
----------------------	------

Mycoplasma Agar for Bovine Mastitis

For the detection of *Mycoplasma* spp. associated with bovine mastitis.

15x100mm plate, 10/pk	G102
-----------------------	------

Neutralizing
Buffered Peptone
Water (nBPW),
Cat. no. U482



Mycoplasma Agar with Cefoperazone

For the detection of *Mycoplasma* spp. associated with bovine mastitis.

15x100mm plate, 10/pk	G212
-----------------------	------

Mycoplasma Broth

For the cultivation of *Mycoplasma* and the detection of *Mycoplasma* contamination in biologics and biological processes.

118ml glass bottle, 100ml fill, 20/pk	U407
--	------

Mycoplasma Broth for Bovine Mastitis

For the detection of *Mycoplasma* spp. associated with bovine mastitis.

13x100mm polycarbonate tube, 4ml fill, 20/pk	R102
---	------

MYEP Broth (Mannitol Yeast Extract Peptone)

For use in the detection of microbial contamination, enumeration, and growth promotion studies.

180ml polycarbonate jar, 90ml fill, 12/pk	U214
--	------

MYP Agar (Mannitol Yolk Polymyxin Agar)

For the enumeration of *Bacillus cereus* from foods.

15x100mm plate, 10/pk	G147
-----------------------	------

NaCl 6.5% Agar

For use in salt tolerance testing to differentiate *Enterococcus* from non-enterococcal group D streptococci.

With Indicator, 16x100mm tube, 5.5ml slant 20/pk	L22
--	-----

NaCl 6.5% Broth

For use in salt tolerance testing to differentiate *Enterococcus* from non-enterococcal group D streptococci.

With Indicator 13x100mm polycarbonate tube, 1ml fill, 20/pk	R26
With Indicator 13x100mm polycarbonate tube, 2ml fill, 20/pk	K49
Without Indicator 13x100mm polycarbonate tube, 3ml fill, 20/pk	R27

Neomycin Anaerobic Blood Agar

(Blood Agar with 5% Sheep Blood, Hemin, Vitamin K, and Neomycin)

For the selective isolation of fastidious anaerobic microorganisms.

15x100mm plate, 10/pk	A62
-----------------------	-----

Neutralizing Buffer

For use in environmental monitoring procedures for the sterility testing of equipment and surfaces.

16x125mm glass tube, 10ml fill, 20/pk	K105
--	------

Neutralizing Buffered Peptone Water (nBPW)

For use in the recovery of sub-lethally injured *Salmonella* species from industrial samples prior to selective enrichment and isolation. Ideal for chicken carcass testing in the poultry industry.

500ml PET bottle, 400ml fill, 10/pk	U482
--	------

Nitrate Broth

For the determination of nitrate reduction and gas production.

13x100mm polycarbonate tube, with Durham tube, 6ml fill, 20/pk	K42
--	-----

Nitrate Substrate Broth

For use in the determination of nitrate utilization by *Mycobacterium* species.

13x100mm Tube, 2ml fill 20/pk	R97
----------------------------------	-----

Non-Nutrient Agar

For the detection of free-living amoebae, including *Acanthamoeba* and *Naegleria* spp.

15x100mm plate, 10/pk	G225
--------------------------	------

Nutrient Agar

For use in the isolation and cultivation of nonfastidious microorganisms.
15x100mm plate, 26ml deep fill, 10/pk W51

Without plate label, 15x100mm plate, 26ml deep fill, 10/pk W31
1.5%, 15x100mm plate, 26ml deep fill, 10/pk W68
16x100mm glass tube, 5.5ml slant, 20/pk L20

Nutrient Agar with MUG (Methylumbelliferyl Glucuronide)

For the detection and enumeration of *E. coli*.
15x60mm plate, 10/pk G114

Nutrient Broth

A general purpose growth medium recommended for use in the cultivation of nonfastidious microorganisms.
13x100mm polycarbonate tube, 5ml fill, 20/pk K43
20x150mm glass tube, 20ml fill, 20/pk U234
125ml polypropylene bottle, 100ml fill, 12/pk U234
1L polycarbonate bottle, 1,000ml fill, 10/pk U322

Nutrient Gelatin

Used to aid in classification of the *Enterobacteriaceae* by determining an organisms ability to liquefy gelatin.
13x100mm tube, 6ml deep, 20/pk Q23

Oxford Medium, Modified, Cat. no. G46



Oatmeal Agar

For the cultivation of fungi, particularly for macrospore formation.
15x100mm plate, 24ml deep fill, 10/pk W54

OF Medium (Oxidative-fermentative)

For the detection of oxidation or fermentation of carbohydrates by bacteria.
13x100mm polycarbonate tube, 3ml fill, 20/pk Y51
OF Base Medium Y51
OF Dextrose Y57
OF Fructose Y58
OF Lactose Y54
OF Maltose Y52
OF Mannitol Y53
OF Sucrose Y55
OF Xylose Y56

OGYE Agar (Oxytetracycline-Glucose Yeast Extract)

For the detection and isolation of yeasts and molds from foods.
15x100mm plate, 26ml deep fill, 10/pk W19

ONPG Rapid Test Broth

For differentiating members of the *Enterobacteriaceae* and other microorganisms based on beta-D-galactosidase activity.
13x100mm polycarbonate tube, 0.5ml fill, 20/pk R92

Orange Serum Agar

For the cultivation and enumeration of aciduric, putrefactive microorganisms.
15x60mm plate, 10/pk G91
15x100mm plate, 10/pk G181

Osmophilic Yeast Agar

For the cultivation of yeasts and molds.
15x100mm plate, 10/pk G199

Oxford Medium, Modified

For the selective isolation and differentiation of *Listeria monocytogenes*.
15x100mm plate, 10/pk G46

Page's Saline

For detecting the presence of free-living pathogenic amoebae cysts, trophozoites, and flagellates; for use with Non-Nutrient Agar, Cat. no. G225.
13x100mm polycarbonate tube, 2ml fill, 20/pk R225

PALCAM Agar (Polymyxin Acriflavin Lithium-chloride Ceftazidime Esculin Mannitol)

For the isolation and cultivation of *Listeria* spp.
15x100mm plate, 10/pk G149

PC Agar (Pseudomonas cepacia)

For the selective isolation of *Pseudomonas (Burkholderia) cepacia*.
15x100mm plate, 10/pk G48

Phenylalanine Agar

For the differentiation of gram-negative bacilli based on the production of phenylpyruvic acid by oxidative deamination.
Ferric Chloride 10%, Cat no. Z63, not included.
16x100mm glass tube, 5.5ml slant, 20/pk L21

PEA Agar with 5% Sheep Blood (Phenylethyl Alcohol)

For the isolation of gram-positive microorganisms, particularly gram-positive cocci, from mixed specimens.
15x100mm plate, 10/pk A93

PEA Agar with 5% Sheep Blood/Tergitol 7 Agar (Phenylethyl Alcohol)

Section I: PEA Agar with 5% sheep blood is for the isolation of gram-positive microorganisms, particularly gram-positive cocci, from mixed specimens.
Section II: Tergitol 7 Agar is for enumeration of coliforms in food and water samples.
15x100mm biplate, 10/pk J120

Peptic Digest Agar with Fildes and Nafcillin

For the selective isolation and cultivation of *Haemophilus* spp.
15x100mm plate, 10/pk G141

Peptone Water 0.1%

For use in food, water and wastewater, pharmaceutical and cosmetic testing as a diluent or rinsing solution and for microbial enumeration purposes.

With 1% Sodium Chloride:
20x125mm glass tube,
9ml fill, 20/pk K47

Without Sodium Chloride:
500ml polycarbonate bottle,
500ml fill, 10/pk U201

Peptone Salt

For use as a diluent and for the preparation of suspensions.

Contains 0.1% Proteose Peptone and 0.85% NaCl.
180ml polycarbonate jar,
90ml fill, 12/pk U390

Phenol Red Carbohydrate Test Media

For the differentiation of microorganisms by carbohydrate fermentation.

16x125mm glass, 10ml fill, with Durham tube, 20/pk.
With Adonitol Y301

With Arabinose Y302

With Dextrose Y304

With Dulcitol Y305

With Galactose Y306

With Inositol Y307

With Glucoside Y321

With Glycerol Y322

With Lactose Y309

With Maltose Y310

With Mannitol Y311

With Mannose Y319

With Raffinose Y312

With Rhamnose Y313

With Salicin Y314

With Sorbitol Y315

With Sucrose Y316

With Trehalose Y317

With Xylose Y318

Phosphate Buffer

Used to break down mucous components of sputum and other clinical specimens and to decontaminate the specimen of normal flora in order to allow slower growing mycobacteria to grow.

13x100mm polycarbonate tube,
3ml fill, 20/pk R196

59ml polypropylene bottle,
30ml fill, 25/pk X31

59ml polypropylene bottle,
40ml fill, 25/pk X43

500ml polycarbonate bottle,
500ml fill, Each U10

1L polycarbonate bottle,
1,000ml fill, 10/pk U192

Phosphate Buffer pH 7.2

For use as a diluent in the preparation of dilutions for plate counts and other laboratory processes for non-clinical samples.

500ml polycarbonate bottle,
500ml fill, 10/pk U438

0.01M Phosphate Buffered Saline with 0.02% Tween® 80

Recommended for use in performing microbial sampling, culture, and surveillance procedures for reprocessed endoscopes.
125ml polycarbonate bottle,
50ml fill, 16/pk U334

Phosphate Buffered Saline, pH 7.5

Recommended as a diluent for quantitative culturing or as a rinsing agent in microbiological, immunological, histological and molecular testing procedures.

13x100mm polycarbonate tube,
1ml fill, 20/pk R201

16x125mm polycarbonate tube, 9ml fill, 20/pk K146

16x125mm polycarbonate tube, 9.9ml fill, 20/pk K163

125ml polypropylene bottle,
100ml fill, Each U137

1L polycarbonate bottle,
1,000ml fill, 10/pk U138

Phosphate Buffer with MgCl₂ (Magnesium Chloride)

Used to prepare dilutions of samples for examination of water, dairy products, foods and other materials.

Dilu-Lok™ Vial, 145ml polypropylene vial, with flip-top lid, 50/pk:
90ml fill D690

99ml fill D699

500ml PET bottle, 500ml fill, 10/pk U193

500ml polypropylene bottle, 500ml fill, 10/pk U265

1L PET bottle, 1000ml fill, 10/pk U217

Phosphate Buffered Saline with 0.05% Tween® 20

For use during sample processing for recovery of bacterial spores.

125ml polypropylene bottle,
100ml fill, 12/pk U235

PLET Agar (Polymyxin Lysozyme EDTA Thallous Acetate)

For the selective isolation of *Bacillus anthracis* from environmental samples, animal products, carcasses, and clinical samples from non-sterile sites.

LokTight™ contact plate,
15x65mm, 10/pk P15

15x100mm plate, 10/pk G153

Potato Dextrose Agar, USP

For use in the cultivation of yeast and molds.

15x150mm large plate, 68ml fill, 10/pk H51

15x100mm plate, 26ml deep fill, 10/pk W60

20x125mm glass tube, 10ml slant, 20/pk L90

20x125mm glass tube, 18ml deep, 20/pk Q29

236ml Boston round glass bottle, 200ml fill, 12/pk U294

500ml polycarbonate bottle, 500ml fill, 10/pk U376

1L polycarbonate bottle, 1,000ml fill, 10/pk U379



**PLET Agar,
LokTight™ contact plate
Cat. no. P15**

Potato Dextrose Agar with Chlortetracycline
For the microbial enumeration of yeast and mold from cosmetics.
15x100mm plate, 26ml deep fill, 10/pk W93

Potato Dextrose Agar with Chloramphenicol
For the selective cultivation of fungi.
15x100mm plate, 28ml deep fill, 100/pk W94BX

Potato Dextrose Agar with Tartaric Acid
For the microbial examination of food and dairy products.
15x60mm plate, 10/pk G94
15x100mm plate, 28ml deep fill, 10/pk W96
15x100mm red tinted plate, 28ml deep fill, 10/pk W96R

Potato Flake Agar
Used in the cultivation, isolation, and induction of sporulation of fungi from clinical specimens.
15x100mm plate, 26ml deep fill, 10/pk W59
HardyFlask™, 12ml slant, 20/pk X32

Potato Flake Selective Agar
For the selective isolation of pathogenic fungi.
15x100mm plate, 26ml deep fill, 10/pk W159
HardyFlask™, 12ml slant, 20/pk X59
20x125mm glass tube, 10ml slant, 20/pk L48

PPLO Selective Agar (Pleuropneumonia-Like Organisms)
For the cultivation and maintenance of *Mycoplasma* spp. and *Ureaplasma* spp.
15x60mm plate, 10/pk G04
15x100mm plate, 10/pk G105

PPLO Selective Broth (Pleuropneumonia-Like Organisms)
For the cultivation and maintenance of *Mycoplasma* spp. and *Ureaplasma* spp.
13x100mm polycarbonate tube, 4ml fill, 20/pk R88

Pseudomonas Agar F (Pseudomonas Agar Fluorescein)
For the detection and differentiation of *Pseudomonas aeruginosa* by enhancement of fluorescein production.
15x100mm plate, 10/pk G198

Pseudomonas Isolation Agar
For the selective isolation of *Pseudomonas aeruginosa*.
15x60mm plate, 10/pk G145
15x100mm plate, 10/pk G219

R2A Agar
For enumeration of heterotrophic bacteria in water, especially potable water.
15x60mm plate, 10/pk G03
15x100 plate, 10/pk G54
Without ink-jet plate label, 15x100 plate, 10/pk G364
SterEM™, USP, irradiated, triple bagged 15x100 plate, 26ml deep fill, 10/pk W390
20x125mm glass tube, 18ml deep, 10/pk Q77
473ml Boston round glass bottle, 400ml fill, 10/pk U354

Rappaport-Vassiliadis R10 Broth
For the selective enrichment of *Salmonella* spp.
16x125 glass tube, 10ml fill, 20/pk K167

Rapid Ornithine
This test will assist in the identification of *Enterobacteriaceae* and *Staphylococcus lugdunensis*; detects ornithine decarboxylase activity in as little as two to four hours.
13x100m polycarbonate tube, 1ml fill, 20/pk K279

Rapid Trehalose Broth
For rapid screening to aid in the detection of *Candida (Torulopsis) glabrata*.
13x100mm polycarbonate tube, 0.35ml fill, 20/pk Z205

Rapid Urea Medium
For the rapid determination of urease activity.
15x45mm glass vial, 2ml deep, 10/pk Z54

Rappaport Vassiliadis (RV) Broth, USP
For the selective enrichment of *Salmonella* spp.
16x125mm glass tube, 10ml fill, 20/pk K246

Regan-Lowe Agar (Charcoal Blood Agar with 10% Horse Blood and Cephalixin)
For the selective isolation of *Bordetella pertussis*.
15x100mm plate, 10/pk A65

Regan-Lowe Semi-Solid Agar
A semisolid medium developed specifically for *Bordetella pertussis*.
13x100mm polycarbonate tube, 4ml deep fill, 20/pk Q32

Regan-Lowe Agar without Cephalixin
For the cultivation of *Bordetella*
15x100mm plate, 10/pk A63

Reinforced Clostridial Medium, USP
For the cultivation and enumeration of clostridia, and other anaerobic and facultative bacteria from foods.
118ml Boston round glass bottle, 100ml fill, 16/pk U172

Rose Agar
For the selective isolation of gram-positive cocci.
15x100mm plate, 10/pk A66



Rapid Urea Medium, Cat. no. Z54

Rose/MacConkey Biplate
(Rose Agar, Selective For gram-Positive Bacteria/MacConkey Agar, Selective for gram-Negative Bacteria)

Section I: Rose Agar is recommended for use as a selective growth medium for the cultivation and isolation of gram-positive cocci from clinical and non-clinical specimens which contain mixed flora.

Section II: MacConkey Agar is recommended for use as a selective and differential medium for the isolation of gram-negative bacilli (including coliform organisms and enteric pathogens), on the basis of lactose fermentation.

15x100mm biplate, 10/pk J85

Sab-Duet™ DTM / Mycobiotic Agar Biplate

For the selective isolation and enumeration of yeasts and molds.

LokTight™ 15x65mm contact plate, 10/pk P42

With 1.5X Chloramphenicol, 20x150mm glass tube, 20ml deep, 100/pk Q81

20x150mm glass tube, 20ml deep, 100/pk Q82

15x100mm plate, 26ml deep fill, 10/pk W87

RTF (Modified Casman) Agar

(Rousseau, Trowbridge, Fisher)

For the cultivation and differentiation of fastidious microorganisms, especially *Haemophilus* spp. by hemolytic reactions.

15x100mm plate, 10/pk A68



SabDex Agar (Sabouraud Dextrose)

For the cultivation of fungi.

Plate

25x100mm plate, 59ml deep fill, 5/pk W250

USP, 15x100mm plate, 26ml deep fill, 10/pk W70

USP, 15x100mm blue tinted plate, 26ml deep fill, 10/pk W82

SterEM™, USP, irradiated, triple bagged, 15x100 plate, 26ml deep fill, 10/pk W370

USP, 15x150mm large plate, 70ml fill, 10/pk H39

USP, 15x100mm red tinted plate, 26ml deep fill, 10/pk W70R

LokTight™ contact plate, 15x65mm, 10/pk P36

Glass Tube

20x125mm, 10ml slant, 20/pk L40

USP, 20x125mm, 18ml deep, 20/pk Q31

USP, 20x150mm, 20ml deep, 100/pk Q83

Flask

HardyFlask™, 12ml slant, 20/pk X40

Bottle, USP

250ml polycarbonate bottle, 100ml fill, 12/pk U474

473ml glass bottle, 200ml fill, 212/pk U227

473ml glass bottle, 400ml fill, 12/pk U352

500ml polycarbonate bottle, 200ml fill, 10/pk U270

USP, 500ml polycarbonate bottle, 500ml fill, 10/pk U353

SabDex Agar, Emmons (Sabouraud Dextrose)

For the isolation, cultivation, and maintenance of non-pathogenic and pathogenic species of fungi and yeasts.

15x100mm plate, 26ml deep fill, 10/pk W20

HardyFlask™, 10ml slant, 20/pk X57

SabDex Agar with C and G/DTM Biplate (Sabouraud Dextrose Agar with Chloramphenicol and Gentamicin/ Dermatophyte Test Medium)

Section I: SabDex Agar with C and G is recommended for the selective isolation of fungi and yeasts from clinical and nonclinical specimens.

Section II: DTM is a selective and differential medium recommended for the cultivation and isolation of pathogenic dermatophytic fungi.

15x100mm biplate, 10/pk J107

SabDex Agar with Chloramphenicol (Sabouraud Dextrose)

For the selective isolation of fungi and yeasts from clinical and nonclinical specimens.

15x100mm plate, 26ml deep fill, 10/pk W72

HardyFlask™, 12ml slant, 20/pk X41

20x125mm glass tube, 18ml deep, 20/pk Q34

500ml polycarbonate bottle, 500ml fill, pk/10 U445

SabDex Agar with Chloramphenicol and Tetracycline (Sabouraud Dextrose)

For the selective isolation of fungi and yeasts from clinical and nonclinical specimens.

15x100mm plate, 26ml deep fill, 10/pk W74

SabDex Agar with Gentamicin and Chloramphenicol (Sabouraud Dextrose)

For the selective isolation of fungi and yeasts from clinical and nonclinical specimens.

15x60mm plate, 10/pk G159

15x100mm plate, 26ml deep fill, 10/pk W73

SabDex Agar, USP, Irradiated, Cat. no. W565

**SabDex Agar with
Lecithin and Tween® 80
(Sabouraud Dextrose)**

For the cultivation of yeasts and fungi from environmental samples.

20x125mm glass tube,	
18ml deep, 20/pk	Q75
473ml Boston round glass bottle, 400ml fill, 12/pk	U431
500ml polypropylene bottle, 400ml fill, 10/pk	U175
LokTight™ 15x65mm contact plate, 10/pk	P46
15x100mm plate, 26ml deep fill, 10/pk	W71

**SabDex Agar with
Lecithin and Tween® 80,
Irradiated, USP
(Sabouraud Dextrose)**

For the detection and enumeration of fungi for environmental monitoring. Neutralizes disinfectants. LokTight™ 15x65mm contact plate, triple bagged, 10/pk

	P385
SterEM™ 15x100mm plate, triple bagged, 34ml deep fill, 10/pk	W385

**SabDex Broth
(Sabouraud Dextrose)**

For the isolation, cultivation, and maintenance of non-pathogenic and pathogenic species of fungi and yeasts. 16x125mm glass tube, 10ml fill, 20/pk

	K54
USP, 125ml bottle with septum cap, 100ml fill, 16/pk	U73

**Sab-Duet™ DTM/
Mycobiotic Agar
(Dermatophyte Test Medium)**

Section I: Dermatophyte Test Medium (DTM) is a selective and differential medium recommended for the cultivation and isolation of pathogenic dermatophytic fungi.

Section II: Mycobiotic Agar is recommended for use in the isolation of pathogenic fungi from clinical specimens.

15x100mm biplate, 10/pk	J850
-------------------------	------

**SabHI Agar
(Sabouraud-Brain Heart Infusion)**

For the cultivation of fungi. HardyFlask™, 12ml slant, 20/pk

	X75
15x100mm plate, 26ml deep fill, 10/pk	W75

**SabHI Agar with Blood,
Chloramphenicol, and
Cycloheximide
(Sabouraud-Brain Heart Infusion)**

For the selective isolation of pathogenic fungi. HardyFlask™, 12ml slant, 20/pk

	X73
--	-----

Saline, 0.45%

For procedures that require the use of an isotonic diluent. It is also recommended for use in preparing test suspensions of organisms.

11.75x75mm glass tube, 2ml fill, 100/pk	D12
1L polycarbonate bottle, 1,000ml fill, 10/pk	U159

Saline, 0.85%

For procedures that require the use of an isotonic diluent. It is also recommended for use in preparing test suspensions of organisms.

Glass Tube	
11.75x75mm tube, 2ml fill, 100/pk	D185
13x100mm, 2ml fill, 20/pk	R55
16x100mm, 5ml fill, 20/pk	K59
16x100mm, 9ml fill, 20/pk	K52
16x125mm, 9.9ml fill, 20/pk	K53
16x125mm, 10ml fill, 20/pk	K51
20x125mm, 10ml fill, 20/pk	K58

Polycarbonate Tube	
13x100mm, 2ml fill, 20/pk	R45
13x100mm, 4ml fill, 20/pk	R47
16x100mm, 1ml fill, 20/pk	K248

Polypropylene Bottle	
125ml, 100ml fill, 12/pk	U155
1L, 1,000ml fill, 10/pk	U157

Saline 0.9%

A rinsing and diluting fluid for use in USP testing protocols. 500ml polycarbonate bottle, 500ml fill, 10/pk

	U264
--	------

**Saline 0.9% with 0.5%
Tween® 80**

For preparing dilutions and suspensions of microorganisms. 16x125mm glass tube, 9ml fill, 20/pk

	K123
125ml polypropylene bottle, 100ml fill, 12/pk	U304

Saline Lactose Broth

For use in preparing challenge stock suspensions of *Brevundimonas (Pseudomonas) diminuta*. 1L polycarbonate bottle, 1,000ml fill, 10/pk

	U478
--	------

Saline with Tween® 80

For preparing dilutions and suspensions of microorganisms. 100ml glass serum bottle, 100ml fill, 20/pk

	U330
--	------

**Schaedler Agar with
Sheep Blood, H & K
(Hemin & Vitamin K)**

For the cultivation of anaerobic bacteria. 15x100mm plate, 10/pk

	A98
--	-----

Selective Strep Agar

For use in the primary isolation of all *Streptococcus* species, including streptococcal groups A (*Streptococcus pyogenes*), B (*Streptococcus agalactiae*), C, D, F, G, and *Streptococcus pneumoniae*, especially from respiratory specimens. 15x100mm plate, 10/pk

	A70
--	-----

Selenite Cystine Broth

For the selective enrichment of *Salmonella* spp. 16x125mm glass tube, 10ml fill, 20/pk

	K69
--	-----

SF Broth

For the cultivation and differentiation of group D enterococci from group D non-enterococci. 16x125mm glass tube, 5ml fill, 20/pk

	K45
--	-----

**SHIBAM Agar
(STEC Heart Infusion washed Blood Agar
with Mitomycin C)**

For use as a selective and differential growth medium for the cultivation of Shiga toxin-producing *E. coli* (STEC). 15x100mm plate, 10/pk

	A146
--	------

SIM Medium
(Sulfide, Indole, Motility)

For the differentiation of gram-negative enteric bacilli on the basis of sulfide production, indole formation, and motility.
16x100mm glass tube,
8ml deep, 20/pk

Q30

Simmons Citrate Agar

For use in the differentiation of gram-negative enteric bacilli based on citrate utilization.
16x100mm glass tube,
5.5ml slant, 20/pk

L80

Skim Milk Agar

For the cultivation and confirmation of *Pseudomonas aeruginosa* in the testing of recreational waters.
15x60mm plate, 10/pk

G138

Snyder Test Agar

For the cultivation and enumeration of lactobacilli in saliva.
16x125mm glass tube, 8ml deep,
20/pk

K72

SP4 Agar with Glucose

For the isolation, differentiation, and maintenance of mycoplasma, including *M. hominis*, *M. pneumoniae*, and *Ureaplasma urealyticum*.
15x60mm plate, 10/pk

G21

SP4 Broth

For the isolation, differentiation, and maintenance of mycoplasma, including *M. hominis*, *M. pneumoniae*, and *Ureaplasma urealyticum*.
With Arginine
13x100mm polycarbonate tube,
2ml fill, 20/pk

R85

With Glucose
13x100mm polycarbonate tube,
2ml fill, 20/pk

R86

125ml polypropylene bottle,
100ml fill, Each

U86

With Urea
13x100mm polycarbonate tube,
2ml fill, 20/pk

R87

SS Agar
(Salmonella Shigella)

For the isolation of Salmonella and some *Shigella* species from clinical and non-clinical specimens.
15x100mm plate, 10/pk

G50

Standard Methods Agar
(Plate Count Agar)

For use in determining the microbial content in dairy products, food, water samples, and other material of sanitary importance.
15x100mm plate, 10/pk
20x125mm glass tube, 18ml deep, 20/pk

G43

Q21

118ml glass bottle, 100ml fill,
20/pk

U95

236ml glass bottle, 200ml fill,
12/pk

U295

473ml glass bottle, 400ml fill,
12/pk

U395

500ml polycarbonate bottle,
500ml fill, 10/pk

U297

Standard Methods Agar
with Lecithin & Tween® 80

For use in determining the microbial content in dairy products, food, water samples, and other material of sanitary importance.
LokTight™ contact plate,
15x65mm, 10/pk

P51

Starch Agar

For the use in the determination of starch hydrolysis by microorganisms.
15x100mm plate, 10/pk

G294

Strep B Carrot Broth™
One-Step

A selective and differential medium for the detection of Group B *Streptococcus* (GBS) from anovaginal specimens collected from pregnant women.
13x80mm plastic tube, 4ml fill,
compatible with the WASP® System,
100/pk

Z44BX

13x100mm tube, 4ml fill,
20/pk

Z40

16x100mm tube, 6ml fill,
compatible with BD Innova®
100/pk

Z46BX

Sterile Water, USP

For quality control sterility testing.
200ml glass serum bottle,
200ml fill, 10/pk

U232

Sterile Water

For use in performing microbial sampling, culture, and surveillance procedures for reprocessed endoscopes.
125ml polycarbonate bottle,
50ml fill, 16/pk

U336

StrepPlate™ Selective
Strep Agar Plate with
CO₂ Pill Pocket

For the selective isolation of all *Streptococcus* spp., including beta-hemolytic group A (*Streptococcus pyogenes*), group B (*Streptococcus agalactiae*), groups C, D, F and G; and *Streptococcus pneumoniae*.
Pill pocket plate with bag and CO₂ tablet,
10/pk

A150

Sugar Free Agar

For the enumeration of microbial contaminants in butter or other processed dairy products.
15x100mm plate, 10/pk
15x100mm plate,
100/pk
250ml polycarbonate bottle,
225ml fill, 12/pk

G445

G445BX

U405

Sulfite Polymyxin Milk
Agar

For the selective isolation of *Clostridium* spp. from fecal samples.
15x100mm plate, 10/pk

G251



Strep B
Carrot Broth™
One-Step

TAT Broth
(Tryptone-Azolectin-Tween®)

For use in the cultivation of microorganisms from highly viscous or gelatinous materials, such as salves and ointments. 20x125mm glass tube, 9ml fill, 20/pk

K251

118ml Boston round glass bottle, 90ml fill, 20/pk

U87

118ml Boston round glass bottle, 99ml fill, 20/pk

U78

125ml polypropylene bottle, 99ml fill, 50/pk

U399

236ml wide mouth glass jar, 90ml fill, 12/pk

U77

236ml wide mouth glass jar, 99ml fill, 12/pk

U88

1L polypropylene bottle, 490ml fill, 10/pk

U318

1L polypropylene bottle, 1,000ml fill, 10/pk

U319

TAT Broth with Lecithin and Tween® 80
(Tryptone-Azolectin-Tween®)

For use in cultivating microorganisms from highly viscous or gelatinous materials, such as salves and ointments. 16x125mm glass tube, 3ml fill, 20/pk

K179

TB Base Digestant

For processing specimens for AFB culture; add NALC, Cat. no. Z60, upon use. 59ml polypropylene bottle, 50ml fill, 25/pk

X45

125ml polypropylene bottle, 100ml fill, 12/pk

U22

500ml polypropylene bottle, 500ml fill, Each

U20

TCBS Agar
(Thiosulfate Citrate Bile Salts Sucrose)

For the selective isolation and cultivation of *Vibrio* spp. from clinical specimens. 15x100mm plate, 10/pk

G55

Tech Agar Slant

For enhancement of pyocyanin production by *Pseudomonas aeruginosa*. 16x100mm glass tube, 5.5ml slant, 20/pk

L96

Tergitol 7 Agar with TTC

For the enumeration of coliforms in food and water samples. 15x100mm plate, 10/pk

G58

Tetrathionate Broth

For selective enrichment of *Salmonella* spp., use with iodine-iodide solution, Cat. nos. Z129 or Z139. 16x125mm glass tube, 10ml fill, 20/pk

K65

1L polycarbonate bottle, 1,000ml fill, 10/pk

U165

Tetrathionate Broth with Brilliant Green

For the selective enrichment of *Salmonella* spp., use with iodine-iodide solution, Cat. nos. Z129 or Z139. 16x125mm glass tube, 10ml fill, 20/pk

K164

Thayer Martin Agar, Modified

For the selective isolation of *Neisseria gonorrhoeae*, with suppression of most other gram-negative diplococci, gram-negative bacilli, gram-positive organisms, and yeast. 15x100mm plate, 10/pk

E30

Thioglycollate with H and K
(Hemin and Vitamin K)

For the cultivation of aerobic, microaerophilic, and anaerobic microorganisms. 16x100mm glass tube, 5ml fill, 20/pk

K22

16x100mm glass tube, 8ml fill, 20/pk

K234

16x125mm glass tube, 10ml fill, 20/pk

K24

Thioglycollate without Indicator, USP

For the cultivation of aerobic, microaerophilic, and anaerobic microorganisms in normally sterile materials. 118ml glass bottle, 100ml fill, 20/pk

U43

Thioglycollate without Indicator

For the cultivation of aerobic, microaerophilic, and anaerobic microorganisms. 16x125mm glass tube, 10ml fill, 20/pk

K29

Thioglycollate without Indicator, with Supplements

For the cultivation of aerobic, microaerophilic, and anaerobic microorganisms. 16x125mm glass tube, 10ml fill, 20/pk

K23

20x125mm glass tube, 15ml fill, 20/pk

K28

Thioglycollate with Indicator

For the cultivation of aerobic, microaerophilic, and anaerobic microorganisms. 16x125mm glass tube, 10ml fill, 20/pk

K21

Todd Hewitt Broth

For the cultivation of *Streptococcus* spp. for serological typing. 13x100mm polycarbonate tube, 1ml fill, 20/pk

K112

13x100mm polycarbonate tube, 5ml fill, 20/pk

K79

Transgrow Medium

For the isolation of *Neisseria gonorrhoeae* with suppression of most other gram-negative diplococci, gram-negative bacilli, gram-positive organisms and yeast. HardyFlask™, 12ml slant, 20/pk

X52

Trehalose Fermentation Broth

For the determination of trehalose fermentation reactions in yeasts. When incubated at 42°C, aids in the presumptive identification of *Candida glabrata*. 13x100mm polycarbonate tube, 5ml fill, with Durham tube, 20/pk

Y205

Trichophyton Agar

For the differentiation and identification of *Trichophyton* spp.
20x125mm glass tube,
10.5ml slant, 20/pk

# 1	C51
# 2	C52
# 3	C53
# 4	C54

TSA
(Tryptic Soy Agar)

For use as a general growth medium for the detection and enumeration of microorganisms.

USP, Plate	
15x100mm, 10/pk	G60
15x100mm, 100/pk	G60BX
15x100mm, 26ml deep fill, 10/pk	W64
15x150mm, large plate, 69ml fill, 10/pk	H19

Plate	
15x60mm, 10/pk	G151
Without plate label, orientation tabs, and logo, 15x100mm plate, 10/pk	G62

Glass Tube	
16x100mm, 5.5ml slant, 20/pk	L60

USP, Glass Tube	
20x125mm, 18ml deep, 20/pk	Q58
20x150mm, 20ml deep, 100/pk	Q85
1.5x strength, 20x150mm, 20ml deep, 100/pk	Q80

USP, Bottle	
236ml glass, 150ml fill, 20/pk	U49
236ml glass, 200ml fill, 12/pk	U260
473ml glass, 400ml fill, 12/pk	U360
500ml glass, 500ml fill, Each	U158
500ml polycarbonate, 500ml fill, 10/pk	U36
1L polycarbonate, 1,000ml fill, 10/pk	U37

TSA, pH 8.0
(Tryptic Soy Agar)
For use as a general growth medium for the cultivation and maintenance of microorganisms from industrial samples.
15x100mm plate, 10/pk G608

TSA, SterEM™, Irradiated, USP
(Tryptic Soy Agar)
For use as a general growth medium for the detection and enumeration of microorganisms in the microbiological examination of non-sterile products.
15x100mm plate, 26ml deep fill, triple bagged, 10/pk W340
15x100mm plate, 34ml deep fill, triple bagged, 10/pk W340
15x100mm, red tinted plate, 26ml deep fill, triple bagged, 10/pk W340R

TSA with 6% Yeast Extract
(Tryptic Soy Agar)
For the cultivation of microorganisms.
15x100mm plate, 10/pk G204

TSA with Blood and 0.1% Esculin
(Tryptic Soy Agar)
For use in screening dairy products for bacteria.
15x100mm plate, 100/pk A19BX

TSA with Cycloheximide
(Tryptic Soy Agar)
For the isolation and cultivation of microorganisms while inhibiting saprophytic fungal organisms.
15x100mm plate, 10/pk G70

TSA with Lecithin and Tween® 80
(Tryptic Soy Agar)
For use as a general growth medium for establishing microbiological trends, alerts, and action levels in biologically controlled environments.
Lok-Tight™ 15x65mm Contact Plate
USP, 10/pk P34
Irradiated, USP, triple bagged, 10/pk P365
Irradiated, USP, red tinted, triple bagged, 10/pk P365R

USP, Plate
15x100mm, 10/pk G41
SterEM™, Irradiated, Triple Bagged 15x100 plate, 26ml deep fill, 10/pk W365

Plate
15x100mm, 27ml deep fill, 10/pk W41

Bottle
236ml glass, 100ml fill, 12/pk U417
500ml polycarbonate, 400ml fill, 10/pk U174
473ml Boston round glass, 400ml fill, 12/pk U412

Tube
20x125mm glass, 18ml deep, 20/pk Q13

TSA Blood/CLED Agar/
MAC, Triplate
(Tryptic Soy Agar with 5% Blood/
Cystine Lactose Electrolyte Deficient/
MacConkey Agar)
Section I: Blood Agar, for the isolation, cultivation, and differentiation of microorganisms.
Section II: CLED Agar, for the isolation, enumeration, and presumptive identification of urinary pathogens on the basis of lactose fermentation, while controlling the swarming of *Proteus* spp.
Section III: MacConkey Agar, for the isolation of gram-negative bacilli on the basis of lactose fermentation.
15x100mm triplate, 10/pk J315



TSA with Blood and 0.1% Esculin,
Cat. no. A19BX

**TSA/Cetrimide Agar/
Mannitol Salt Agar,
Triplate
(Tryptic Soy Agar)**

Section I: TSA, for the detection and enumeration of microorganisms.	
Section II: Cetrimide Agar, for the selective isolation and identification of <i>Pseudomonas aeruginosa</i> .	
Section III: Mannitol Salt Agar, for the selective isolation and differentiation of pathogenic staphylococci.	
15x100mm triplate, 10/pk	J330

**TSB
(Tryptic Soy Broth)**

For use as a general purpose medium for the isolation and cultivation of a wide variety of bacteria and fungi.	
USP, Glass serum vial, needle port, crimp cap	
20ml, 10ml fill, 50/pk	U8210
20ml, 15ml fill, 10/pk	U382
20ml, 20ml fill, 50/pk	U38
100ml, 50ml fill, 20/pk	U267
100ml, 100ml fill, 20/pk	U46
USP, Glass bottle, needle port	
500ml, 500ml fill, 10/pk	U274
USP, Glass bottle	
59ml Boston round, 40ml fill, 24/pk	U462
59ml Boston round, 50ml fill, 24/pk	U44
100ml serum vial, 100ml fill, 10/pk	U101
125ml Boston round, 100ml fill, 20/pk	U42
236ml polycarbonate bottle, 200ml fill, 12/pk	U435
500ml glass bottle, needle port septum, 300ml fill, 10/pk	U421
USP, Glass tube	
16x125mm, 10ml fill, 20/pk	K82
ReadyRack™, 16x125mm tube, 10ml fill, 80/pk	K82BX
With flush septa cap	
16x125mm, 10ml fill, 20/pk	K182
20x125mm, 15ml fill, 20/pk	K83
20x150mm, 20ml fill, 100/pk	K380
ReadyRack™, 20x150mm tube, 10ml fill, 80/pk	K380BX

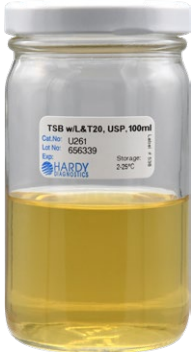
TSB (Continued)	
USP, Polycarbonate bottle	
125ml, 100ml fill, with needle port cap, 16/pk	U141
250ml, 190ml fill, 12/pk	U367
500ml, 500ml fill, Each	U65
500ml, 490ml fill, 10/pk	U363
1L, 1,000ml fill, 10/pk	U67
USP, Polycarbonate jar	
180ml, wide mouth, 25ml fill, 12/pk	U223
180ml, wide mouth, 90ml fill, 12/pk	U133
180ml, wide mouth, 100ml fill, 12/pk	U71
500ml, wide mouth, 225ml fill, 10/pk	U80
USP, MediaBag™	
100ml fill, with needle port and spike port, 10/pk	U100
700ml fill, with needle port and spike port, 5/pk	HVB5
Glass Tube	
13x100mm, 2ml fill, 20/pk	R31
13x100mm, 5ml fill, 20/pk	R30
16x100mm, 9ml fill, 20/pk	K88
13x100mm, 2ml fill, 20/pk	K131
16x100mm, 5ml fill, 20/pk	K89
13x100mm, filtered, 1ml fill, 20/pk	K85
13x100mm, filtered, 2ml fill, 20/pk	K285
Polycarbonate Tube	
13x100mm, 1ml fill, 20/pk	R36
13x100mm, 3ml fill, 20/pk	R41
TSB, Double Strength, USP (Tryptic Soy Broth)	
For use as a general growth medium for the cultivation and detection of a wide variety of bacteria, yeast, and other fungi.	
180ml wide mouth polycarbonate jar, 50ml fill, 12/pk	U205
250ml polycarbonate bottle, 100ml fill, 12/pk	U70
118ml glass bottle, 25ml fill, 12/pk	U225

TSB, USP, Ampoule (Tryptic Soy Broth)	
For routine use in the monitoring of aseptic procedures used in the preparation of Compounded Sterile Preparations (CSPs).	
5ml glass ampoule with red dye, 3ml fill, 20/pk	R35

TSB with Glycerol (Tryptic Soy Broth)	
For the preservation of organisms by freezing.	
10% Glycerol	
100ml serum bottle, 100ml fill, 20/pk	U127
15% Glycerol	
13x100mm polycarbonate tube, 2ml fill, 20/pk	R34
15x45mm cryovial, 2ml fill, 100/pk	D09
15x45mm glass cryovial, 2ml fill, 100/pk	D08
16x100mm glass tube, 5ml fill, 20/pk	K242

TSB with 6.5% Sodium Chloride (Tryptic Soy Broth)	
For the differentiation of enterococci from the group D streptococci.	
13x100mm polycarbonate tube, 5ml fill, 20/pk	K126

TSB with Lecithin and Tween® 20, USP (Tryptic Soy Broth)	
For the cultivation of microorganisms from environmental surfaces and for sterility testing various products.	
240ml wide mouth jar, 90ml fill, 12/pk	U241
240ml wide mouth jar, 100ml fill, 12/pk	U261



**TSB with
Lecithin and
Tween® 20,
USP, Cat. no.
U261**

TSB with Lecithin and Tween® 80
(Tryptic Soy Broth)

For the cultivation of a wide variety of fastidious and nonfastidious microorganisms from nonclinical specimens, when the neutralization of disinfectants is desired.

20x125mm glass tube, 9ml fill, 20/pk	K134
20ml serum vial, 10ml fill, 50/pk	U423
180ml polycarbonate wide mouth jar, 99ml fill, 12/pk	U292
236ml glass, USP, wide mouth jar, 90ml fill, 12/pk	U134G
500ml polypropylene bottle, 500ml fill, 10/pk	U229
500ml glass septum bottle, 300ml fill, 10/pk	U425

TSB with 0.7% Lecithin and 5% Tween® 80
(Tryptic Soy Broth)

For use in the cultivation of microorganisms from environmental surfaces and testing for bacterial contaminants in various products. For the cultivation of a wide variety of fastidious and nonfastidious microorganisms from nonclinical specimens, when the neutralization of disinfectants is desired.

500ml polypropylene bottle, 500ml fill, 10/pk	U306
--	------

TSI Agar
(Triple Sugar Iron)

For use in the differentiation of *Enterobacteriaceae* by their ability to ferment glucose, lactose, and sucrose, and their ability to produce hydrogen sulfide.

13x100mm glass tube, 4ml slant, 20/pk	R32
16x100mm glass tube, 6ml slant, 20/pk	L16
16x125mm glass tube, 8ml slant, 20/pk	L50
16x125mm round bottom glass tube with slip cap, 10ml slant, 100/pk	S15

TSB with Lecithin and Tween® 80,
Cat. no. U292

Tryptone Broth, 2%

For detecting indole production, use with Kovac's Reagent, Cat. no. Z67.

13x100mm polycarbonate tube, 2ml fill, 20/pk	R40
---	-----

Tween® 80

For microbial testing of personal care products.

236ml wide mouth glass jar, 10ml fill, 12/pk	U16
500ml polypropylene bottle, 500ml fill, 10/pk	U180

UBA with Cyclohexamide
(Universal Beer Agar)

For the detection of beer spoilage microorganisms and for the cultivation and enumeration of bacteria and yeast encountered in the brewing industry.

15x60mm plate, 10/pk	G182
----------------------	------

Urea (Christensen's Urea) Agar

For use in the detection of urea hydrolysis in gram-negative organisms.

13x100mm glass tube, 3ml slant, 20/pk	R42
16x100mm glass tube, 5.5ml slant, 20/pk	L65

Urea R Broth

For the rapid detection of urease activity by microorganisms.

13x100mm polycarbonate tube, 1ml fill, 20/pk	Y141
---	------



Urine Quadplate
(Eosine Methylene Blue (EMB) Agar /
Xylose Lysine Deoxycholate (XLD) Agar /
Simmons Citrate Agar / Blood Agar, 5%)

Section I: EMB Agar, for the isolation of gram-negative bacilli (including coliform organisms and enteric pathogens) from clinical and nonclinical specimens.

Section II: XLD Agar, for the isolation of gram-negative enteric pathogens from specimens.

Section III: Simmons Citrate Agar, for use in the differentiation of gram-negative enteric bacilli based on citrate utilization.

Section IV: Blood Agar, for the isolation, cultivation, and differentiation of a wide variety of microorganisms.

15x100mm quadplate, 10/pk	J71
------------------------------	-----

UVM Modified Listeria Enrichment Broth
(University of Vermont)

For the rapid isolation of *Listeria monocytogenes*.

500ml polycarbonate bottle, 225ml fill, 10/pk	U153
500ml polycarbonate bottle, 500ml fill, 10/pk	U51

V9 Agar
(V8™ Juice and Potato Flakes)

For the isolation, cultivation and rapid sporulation of fungi.

15x100mm plate, 22ml deep fill, 10/pk	G98
--	-----

V Agar

For the isolation and differentiation of *Gardnerella vaginalis*.

15x100mm plate, 10/pk	A80
-----------------------	-----

V Agar with CNA
(Colistin and Nalidixic Acid)

For selective isolation of gram-positive cocci and certain gram-negatives such as *G. vaginalis*.

15x100mm plate, 10/pk	A81
-----------------------	-----

Vogel and Johnson Agar

For the detection of coagulase-positive, mannitol-positive *Staphylococcus aureus* strains in clinical specimens and foods.

15x100mm plate, 10/pk	G193
-----------------------	------

VRBA
(Violet Red Bile Agar)
 For the detection of coliforms in food or dairy products.
 15x100mm plate, 10/pk G78
 125ml polycarbonate bottle, 100ml fill, 20/pk U96
 236ml glass bottle, 200ml fill, 10/pk U296

VRBA with MUG/VRBA with MUG Biplate
(Violet Red Bile Agar with Methylumbelliferyl Glucuronide)
 For the detection of coliforms in food or dairy products. The addition of MUG allows for the rapid detection of *E. coli* when the medium is observed for fluorescence using a long-wave UV light source.
 15x100mm biplate, 10/pk J132

VRBGA, USP
(Violet Red Bile Glucose Agar)
 For the detection and enumeration of *Enterobacteriaceae* in food and dairy products.
 15x100mm plate, 10/pk G178

VRBGA with Lactose, USP
(Violet Red Bile Glucose Agar)
 For the detection and enumeration of *Enterobacteriaceae* in food and dairy products.
 15x100mm plate, 10/pk G297

Wallenstein Media
 For use in the cultivation and isolation of mycobacteria other than tuberculosis. It is particularly useful in the recovery of *Mycobacteria avium* complex.
 20x125mm glass tube, 10ml slant, 20/pk C61

Water with 0.02 % Tween® 80
 For the preparation of microbial suspensions.
 13x100mm polycarbonate tube, 3ml fill, 20/pk V03
 20x125mm glass tube, 24ml fill, 20/pk V25

Wilkins-Chalgren Agar
 For the cultivation and isolation of anaerobic microorganisms and for the preparation of agar dilution tests.
 15x100mm plate, 10/pk G89

XLD Agar, USP
(Xylose Lysine Deoxycholate)
 For the isolation of gram-negative enteric pathogens.
 15x100mm plate, 10/pk G65

XLT-4 Agar
(Xylose Lysine Tergitol 4)
 For the detection and isolation of non-Typhi *Salmonella* species.
 15x100mm plate, 10/pk G165

XLT-4 Agar/BGA with Novobiocin Biplate
(Xylose Lysine Tergitol/Brilliant Green Agar)
Section I: XLT-4 Agar, for the detection and isolation of non-typhi *Salmonella* species.
Section II: Brilliant Green Agar with Novobiocin, for the selective isolation of *Salmonella* spp., other than *S. Typhi*, from non-clinical samples.
 15x100mm biplate, 100/pk J127BX

XLT-4 Agar/Brilliant Green Agar with Sulfadiazine Biplate
Section I: XLT-4 Agar, for the detection and isolation of non-Typhi *Salmonella* species.
Section II: Brilliant Green Agar with Sulfadiazine, for the isolation of *Salmonella* spp., other than *Salmonella* Typhi and *Salmonella* Paratyphi, from food samples, especially eggs, following an enrichment procedure.
 15x100mm plate, 10/pk J131

Yeast and Mold-11 Agar
 For the isolation of yeasts and molds.
 15x100mm plate, 10/pk G01



Dilu-Lok™ Dilution Vials

Pre-filled Dilution Vials

Our pre-filled dilution vials are designed for food, dairy, pharmaceutical and water industries. A wide 45mm opening accommodates large samples. A flip-top lid allows for easy one-handed opening.

- 145ml polypropylene vial, flip-top lid

Dilu-Lok™, Butterfield's Phosphate Buffer	
90ml fill, 50/pk	D590
99ml fill, 50/pk	D599

Dilu-Lok™ Buffered Peptone Water	
90ml fill, 50/pk	D080
99ml fill, 50/pk	D089

Dilu-Lok™, Deionized Water	
90ml fill, 50/pk	D090
99ml fill, 50/pk	D099

Dilu-Lok™, Peptone Water, 0.1%	
90ml fill, 50/pk	D290
99ml fill, 50/pk	D299

Dilu-Lok™, Phosphate Buffer with MgCl ₂	
90ml fill, 50/pk	D690
99ml fill, 50/pk	D699

Dilu-Lok™, Tryptone-Azolec-tin-Tween® (TAT) Broth	
90ml fill, 50/pk	D077





Hardy's Prepared Culture Media



Selection

Since 1980, Hardy Diagnostics has grown to manufacture an extensive selection of prepared media products which are packaged in plates, tubes, bottles, bags, and flasks.



Quality Control Program

Hardy products go through rigorous and extensive QC testing and lot specific Certificates of Analysis are available at HardyDiagnostics.com.



Guaranteed Dating

We provide at least one month of usable shelf life on most products upon receipt.



Technical Assistance

Instructions for Use (IFU) for our products are available through our web catalog. Experienced Medical Technologists and microbiologists are available for personalized assistance.



Same Day Shipping

The deadline for same-day shipments is 12:00 p.m. for each respective U.S. time zone. If you miss your local time zone deadline and are in need of product for the following day, please call the number below and we will do all we can to help.


Need something special?

For over 40 years Hardy Diagnostics has worked with its laboratory partners to manufacture custom culture media. Whether for specialized formulations, containers, or packaging, Hardy Diagnostics is ready to assist you with your specific needs.

The Quality Management System at Hardy Diagnostics is ISO 13485 certified and is licensed by the FDA as an "In vitro Medical Device Manufacturer," which ensures the highest standards of quality for our customers.

Call: 800.266.2222 Today!

CUSTOM MEDIA



HARDY DIAGNOSTICS

A Culture of Service™



Years of
Bringing You
A Culture of Service



100%
Employee Owned



Hardy Diagnostics
donates 1% of net
profits to charity.



ISO 13485
Quality
Management for
Medical Devices
CERTIFIED

FM 572526

Hardy Diagnostics has a Quality Management System that is certified to ISO 13485 and is a FDA licensed medical device manufacturer.

Headquarters

1430 West McCoy Lane
Santa Maria, CA 93455
800.266.2222
Sales@HardyDiagnostics.com
HardyDiagnostics.com

Distribution Centers

Santa Maria, California
Olympia, Washington
Salt Lake City, Utah
Phoenix, Arizona
Dallas, Texas
Des Moines, Iowa
Springboro, Ohio
Lake City, Florida
Albany, New York
Raleigh, North Carolina