

# Status

# Flu A & B



An *in vitro* rapid qualitative test that detects influenza type A and type B antigens directly from nasal swab, nasopharyngeal swab and nasal aspirate/wash specimens\*

## FLU FEARS US. YOU WILL LOVE US!



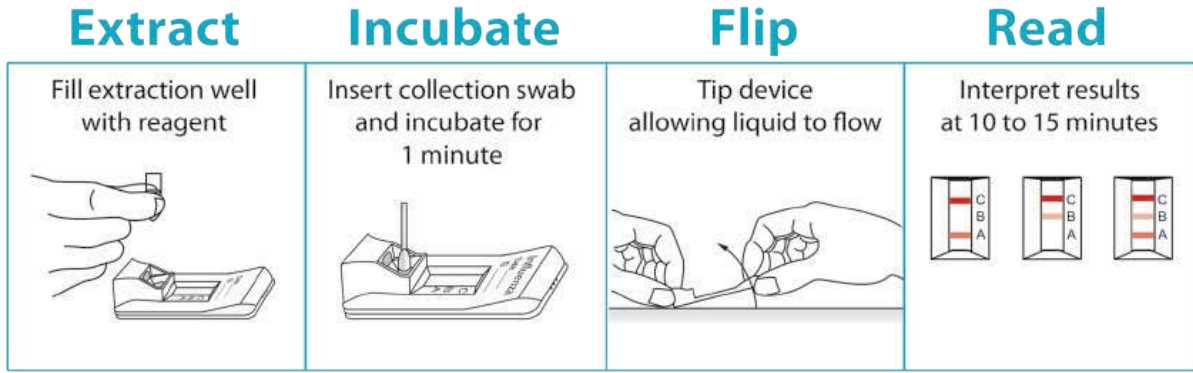
## THEY CAN RUN BUT CANNOT HIDE

- Meets the new FDA reclassification performance criteria
- **CLIA WAIVED** for swab specimens
- Includes Positive and Negative control swabs
- Innovative flip design with onboard sample extraction
- Differentiates between Influenza A and B
- Pre-measured developer solution capsule for increased accuracy and ease of use
- Flocked nasal swabs for improved patient comfort and superior specimen collection

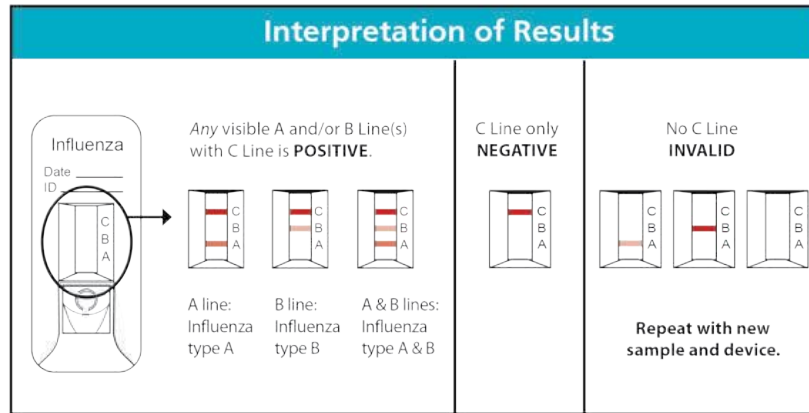
### ORDERING INFORMATION

PRODUCT	# OF TESTS	ITEM #
Status Flu A & B	25	36025
Nasal Aspirate Kit	25	510AS

# Simple Procedure for Swab Specimens



\*\*See Package Insert For Details



**CPT CODE**  
**INFLUENZA A 87804QW**  
**INFLUENZA B 87804QW-59**

## Proven Clinical Performance

Status Flu A & B vs. PCR

	Influenza A	Influenza B
<b>Positive Percent Agreement (PPA)</b>	89.2 % (95% CI: 83.0 - 93.4%)	86.4 % (95% CI: 80.1 - 90.9%)
<b>Negative Percent Agreement (NPA)</b>	99.4 % (95% CI: 97.7 - 99.8%)	99.0 % (95% CI: 97.1 - 99.7%)

Wide Influenza strain coverage: 49 strains including A/CA/2009(H1N1v), A/Minesota/2010(H3N2v), H5NX and H7N9.



**Proudly made in the USA.**  
 For more information or to place an order, contact



1430 West McCoy Lane • Santa Maria • California • 93455  
 800.266.2222 • Sales@HardyDiagnostics.com • [HardyDiagnostics.com](http://HardyDiagnostics.com)

Official Distributor of  
  
 Skillman, NJ



Scan to find your local Hardy Sales Rep