



INSTALLATION INSTRUCTIONS

2005-2015 TOYOTA TACOMA REAR BUMPER

PART #TC-2961

2005-2015 TOYOTA TACOMA PRO SERIES TIRE CARRIER FITS TC-2961 ONLY

PART #TC-5293



Hardware list:

	TC-2961
QTY 8	M12X1.75X40mm
QTY 8	M12X1.75 nut
QTY 26	M12 Washer
QTY 10	M12X1.25X65mm

Removing Factory bumper:

1. Remove plastic center section from top of rear bumper, and from under license plate.
2. Disconnect license plate light.
3. Remove bolts securing bumper skin to frame and receiver brackets.
4. Remove bumper skin at this time.

Bumper Installation for TC-2961:

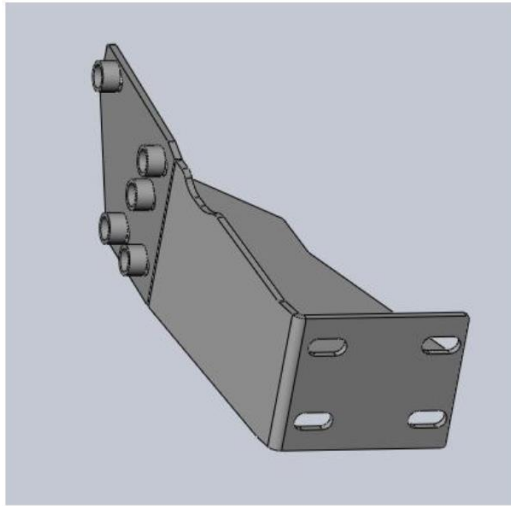
We recommend you have help with lifting of the rear bumper to avoid injury or damage to bumper and vehicle.

1. Remove 5 right side bolts securing bumper and or receiver mount to frame only.



2. Install right side bracket with spacers and M12x1.25x65mm bolts and washers. Leave loose at this time.

3. Repeat above step on left side.



4. Using M12x1.75x40mm bolts, washers and nuts attach TC-2961 with D-ring plates to bumper brackets.

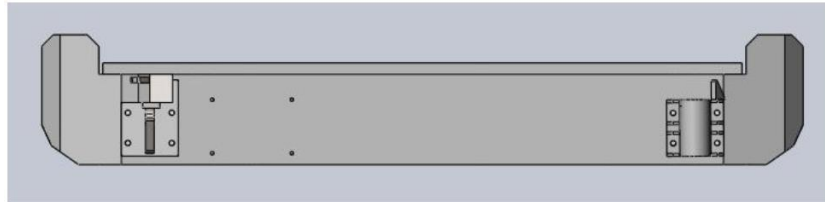


5. Align bumper to body and tighten all hardware at this time.
6. Check for clearance when tailgate is open.
7. Install d-rings.(Sold separately PN 3202).

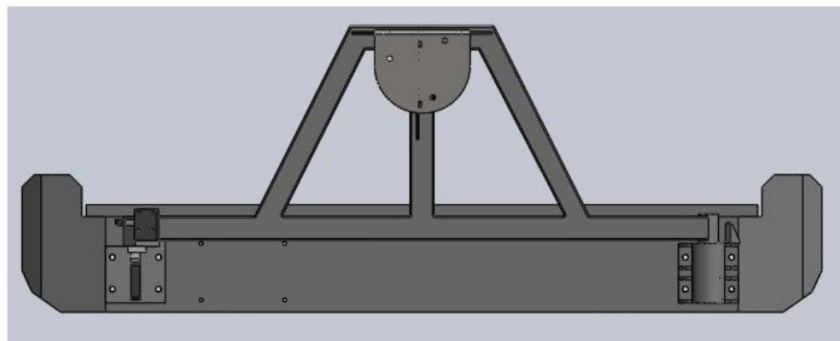
Installing TC-5293 Swing Arm tire Carrier to TC-2961

Grease bearings and bearing races at this time.

1. Install races into spindle mount.
2. Install large bearing and seal in spindle mount
3. Using M12x1.75x40mm bolts, washers and nuts install spindle mount and latch mount to bumper and bumper brackets. Leave loose at this time.



4. Install swing arm onto pivot mount and install small bearing, large washer, and castle nut. Tighten castle nut to 80 to 100 ft/lbs.
5. Install dust cap with cup side up. Use set screw to secure the cap.
6. Install cam lock latch to swing arm using four button head screws with washers and tighten.





Note: the properly adjusted cam lock will close the carrier tight against the stop and can be latched using one hand with 20 to 25 pounds of force.

7. Loosely install the tire carrier plate to swing arm.
8. Set spare tire on tire carrier plate. With tire tight and square against swing arm leave 3/8" gap between wheel and carrier plate.
9. Tighten carrier plate at this time.
10. Tighten spare tire lug nuts at this time.

Note: Recheck all hardware after the first couple hundred miles. It is advised to inspect the bumper and hardware periodically.

**** Body Armor provides a dual step paint process, a base E-coat with a textured power coat exterior paint. This is very durable and corrosion resistant process however rust can still occur. We warranty the finish for manufacturer defects for a period of 90 days from the date of purchase. Surface rust is not considered a manufacturer defect, rust from rock chips or trail scratches are also not considered a manufacturer defect. It is the responsibility of the owner to touch up any rock chips or scratches. Use of a flat black paint sprayed on a piece of foam can be used to touch up any scratches. Surface rust can be cleaned with spray lubricants such as WD-40.**