



Installation instructions for Desert Series Step Boards for 2010-2016 Dodge Ram Crew Cab 2500/3500

**** Inspect Step Boards and all parts prior to installation. Contact us at 951-808-0750 for missing parts.**

Hardware list:

Qty	Part	Qty	Part
1	DS Front Bracket	8	Lock Washer D8
1	PS Front Bracket	4	Lock Washer D12
1	DS Center Bracket	20	Flat Washer D8(8x24x2mm)
1	PS Center Bracket	24	Flat Washer D6(6x22x2mm)
1	DS Rear Bracket	12	Nylock Nut M6
1	PS Rear Bracket	6	Nylock Nut M8
3	DS Support Bracket	4	Hex Nut M8
3	PS Support Bracket	4	Hex Nut M12
4	Bolt Plate M8x30	12	Hex Bolt M6x25
4	Retainer $\phi 8(80.7*40*40)$	14	Hex Bolt M8x30
4	Bolt Plate	4	Flange Hex Bolt M8x20
4	Retainer $\phi 12(80.7*40*40)$	1	Flat Washer D12x32x3

Installing Steps Boards:

We recommend you have help with lifting of the Steps Boards to avoid injury or damage to boards or the vehicle.

- 1 If vehicle has factory steps, remove at this time.
- 2 The installation of the Step Boards on the Dodge Ram requires removing the three body bolts on each side of the vehicle. Pull each body bolts as you reach each mounting point. (Do not move the vehicle while the body bolts are removed!)

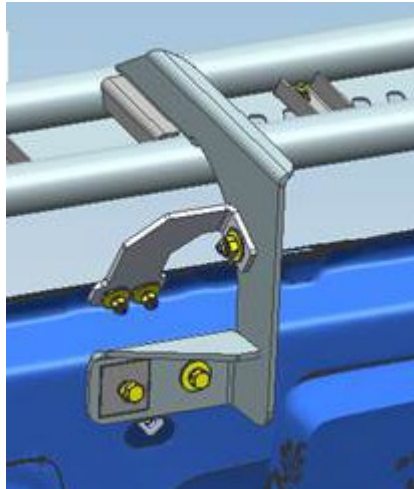
3 Bracket and board installation:

- a. Loosely attach the extension arm to the front upper bracket by inserting bolts and nuts the two vertical holes. Use two 10M hex bolts, flat washers, lock washer and nuts. Leave loose. Slide the body bolt through the rear hole on the front bracket (see image below). Reattach the bracket to the body mount, leave loose
- b. Loosely attach extension arm to the center upper bracket (smallest bracket) similar to the front bracket. Leave loose. Now attach the center bracket and arm to the center body bolt. Leave loose at this time. (see image below)
- c. The rear upper bracket has the body bolt going through the half circle tab on the bracket. Attach the extension arm, the extension arm attaches to the two vertical holes towards the front of the bracket (reverse of the front bracket which uses the rear positioned vertical holes).
- d. Lift the step board and place it on the flat portion of the extension arms. To determine driver vs passenger side boards: The logo plate will be positioned just in front of the "B" pillar where the front and rear doors join. The slotted step areas will be positioned towards the front of the board with the slots angled away from the vehicle front to back. If the center mount on the board does not line up with the center bracket you may have the wrong board on that side of the vehicle. Check to make sure board is on the correct side.
- e. Once the board is attached to all of the arms you can begin to tighten the hardware. Start with front bracket working towards the rear. Begin with the body bolts, then upper extension bracket bolts, finish with the bolts attaching the boards to the brackets.

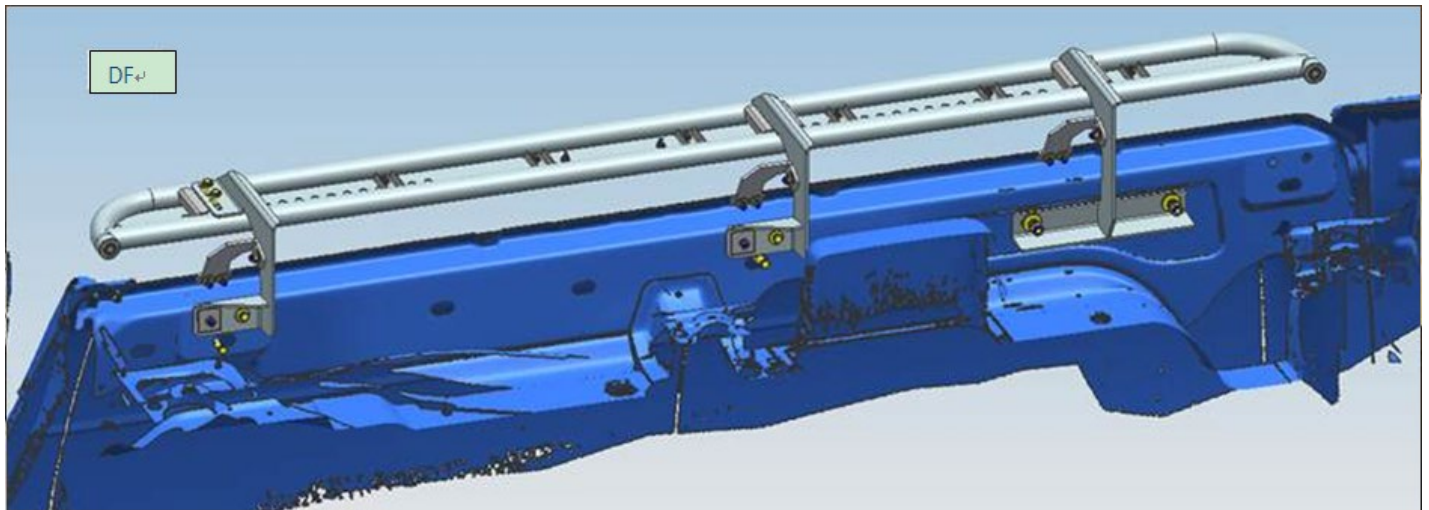
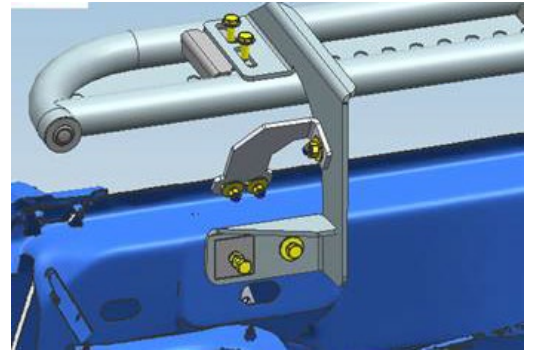
Rear Bracket Upper driver side



Center bracket upper



Front Bracket Upper driver side



Note: Recheck all hardware after the first couple hundred miles. It is advised to inspect the bumper and hardware periodically. **Do not return this product to the dealer if there is a question or concern about a possible defect, contact us directly and we will make every effort to resolve the issue as quickly as possible. 1-951-808-0750 or kneubauer@tolarmfg.com**** Body Armor warranty policy: Body Armor 4x4 warrants this product to be free from manufacturer defects for the life of the product. Damage to the product is not considered a defect; abuse of the product is not considered a defect. If fitment issues occur during the installation is not considered to be a defect, call our office to resolve fitment or installation questions. 951-808-0750. Body Armor 4x4 warranty's the paint for 90 days from date of purchase. Rust is not a warrantable defect as we cannot control proper maintenance of the product or environmental variables. We use the highest quality powder coat process as well as an E-Coat undercoating, this allows for the maximum corrosion resistance available. Proper maintenance is required to maintain the long term luster of the paint. Touch rock chips with a quality flat black spray paint or automotive touch up paint.