

## 2007-2013 TOYOTA TUNDRA FRONT WINCH BUMPER

Part # TN-19335



**\*\* Inspect bumper and all parts prior to installation. Or if you have any installation/fitment questions Contact us at 951-808-0750.**

**\*\*\* Body Armor products are warranted against manufacturer defect. Paint is warranted for 90 days from date of purchase. Rust is not considered a warranty issue because it is typically caused by environmental issues. Chips and scratches need to be touched up as soon as possible. Any quality flat black paint will work. This product has been painted in our dual process paint process, an E-Coat sub-coating plus a textured black powder coat. This dual process paint is highly corrosion resistant but not rust proof as the base material is steel. Proper maintenance of the paint will extend the life of the paint and the looks of your truck.**

**Hardware list:**

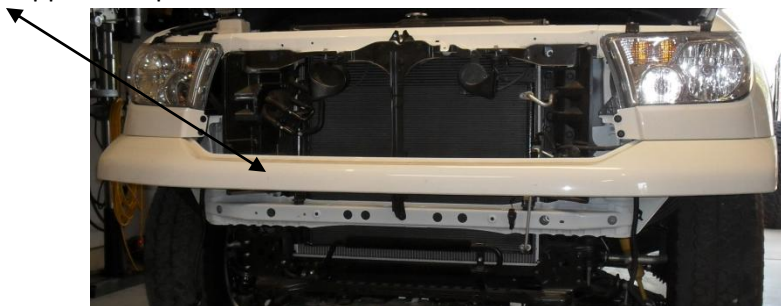
QTY 8	M12X1.75X40mm
QTY 8	M12 Washer
QTY 8	M10X1.5X25mm
QTY 12	M10 Washer
QTY 4	M10X1.5 nut

**Removing Factory bumper:**

- 1 Detach inner fender from lower part of bumper.

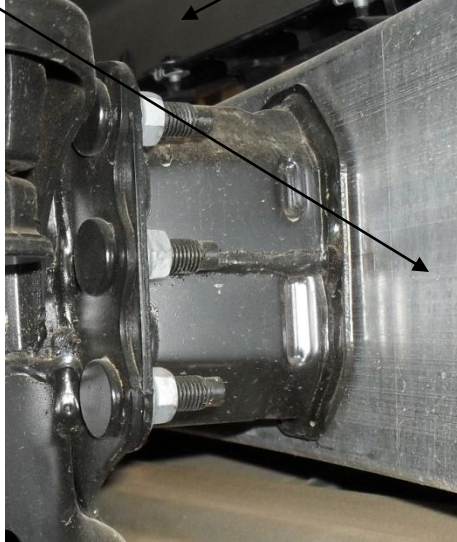


- 2 Remove all fasteners from wheel well top of bumper fascia, and from bottom of bumper fascia. If equipped with driving lights disconnect wiring harness at this time.
- 3 Remove front upper bumper fascia



# INSTALLATION INSTRUCTIONS

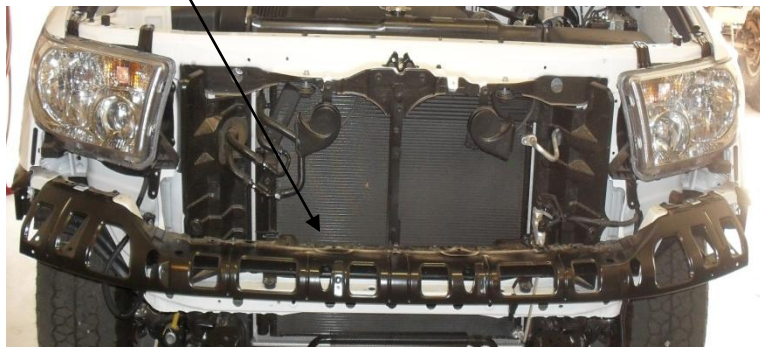
- 4 Remove aluminum front bumper structure and retain factory hardware.



- 5 Remove factory tow hooks.



- 6 Remove factory supports left from behind upper bumper fascia.







- 7 Remove plastic side supports



- 8 Trim both fenders



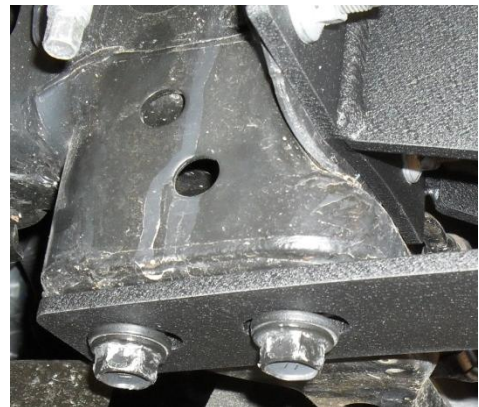
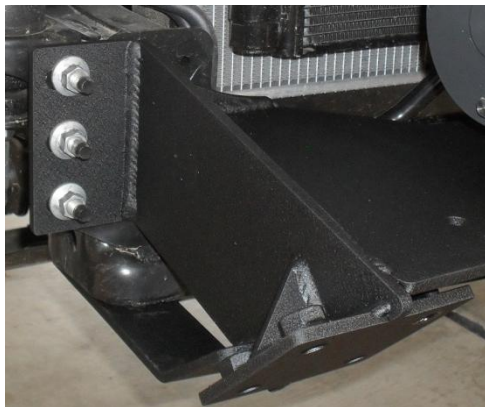
9 Trim center support



**Bumper Installation for Tn-19335:**

**We recommend you have help with lifting of the rear bumper to avoid injury or damage to bumper and vehicle.**

- 1 Install winch plate using factory hardware used for aluminum bumper. (If installing a winch install at this time as per the winch manufacturer instructions. Don't forget to feed the cable through the fairlead slot of the bumper?)





# INSTALLATION INSTRUCTIONS

- 2 Install Front bumper by using the shackle plates by using M 12 hardware. It may be easier to insert one bolt on each side, leaving loose. Then install the remaining 6 bolts. Leave all bolts loose at this time. This will allow for adjustment of the shell to get the fit to the vehicle.



- 3 Check alignment to body and tighten all hardware. Reattach the plastic side supports under the headlights.
- 4 Mount auxiliary lights at this time. If reusing factory lights use supplied bracket to mount lights to light tabs.
- 5 Cut inner plastic fender as needed to clear front tires.

**Note: Recheck all hardware after the first couple hundred miles. It is advised to inspect the bumper and hardware periodically.**



**OTHER NEW PRODUCTS FOR THE TOYOTA TUNDRA!**

## TN-4121 ROCKSTEPS

