



**BRX**  
BODY ARMOR



**2024**  

---

**CATALOG**



# TABLE OF CONTENTS

03	FORD BRONCO
07	JEEP
29	TOYOTA
43	CHEVY
49	DODGE
55	FORD
63	SUBARU
67	SKY RIDGE SERIES
77	UNIVERSAL RACK
79	LEVELING KITS
83	ACCESSORIES
86	LED LIGHTING









## FORD BRONCO COLLECTION

---

Rev up your Ford Bronco to the next level with an adrenaline-pumping array of high-performance off-road accessories! Elevate your off-road game with cutting-edge bumpers, fender deletes, power steps, and beyond.

Our powerhouse lineup doesn't just enhance your Bronco's off-road capabilities – it transforms it into a rugged beast that can face the toughest terrain. Unleash the untamed spirit of your Ford Bronco with Body Armor 4x4 – where adventure meets innovation!





## FORD BRONCO BUMPERS



FB-19534

### 2021 - 2024 FORD BRONCO ODYSSEY SERIES FRONT BUMPER

- 2-in-1 Style bumper
- Option to use with or without winch plate
- Includes both low/high profile hoop and skid plate
- Improves approach and departure angles
- Aggressive styling with optimum functionality
- Light fitment: 18" single row or 20" double row LED bar and 2 cube LEDs
- 12,000lb winch capacity (Fits most standard winches)
- Integrated shackle recovery mounts
- Compatible with O.E. sensors
- No need to relocate ACC or buy additional parts
- 3/16 and 1/4 steel construction
- Easy bolt-on, no drill installation



FB-2965

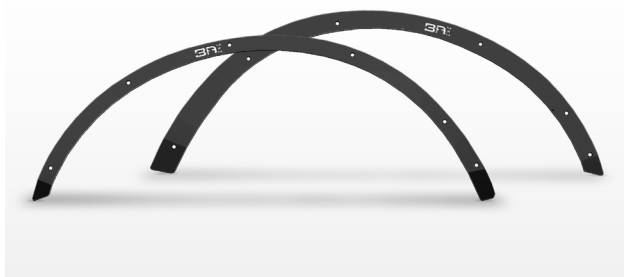
### 2021 - 2024 FORD BRONCO ODYSSEY SERIES REAR BUMPER

- Improves approach and departure angles
- Aggressive styling with optimum functionality
- Integrated shackle recovery mounts
- Light fitment: 2 LED pods
- Compatible with OE sensors
- Accommodates OE receiver
- Fit up to 40" tire
- License plate relocation bracket included
- Easy bolt-on, no drill installation





## FORD BRONCO FENDER DELETES & STEPS



FB-5100

### 2021 - 2024 FORD BRONCO

#### ODYSSEY SERIES FENDER DELETES

- Compliments the body lines for a clean aggressive look
- Allows maximum wheel travel and clearance
- Countersunk hardware provide a finished and complete look
- 1/8" steel construction for longevity and protection
- Easy bolt-on, no drill installation\*
- Fits 2DR & 4DR Models



\*Additional modifications required for 2DR models



FB-4501

### 2021-2024 FORD BRONCO

#### 2 DOOR E-POWER BOARD STEPS

- Low profile E-Step provides improved ground clearance while protecting the vital rocker panel
- 6" wide full cab length steps automatically deploy and retract when opening and closing vehicle door(s)
- Integrated led lights add visibility while the textured surface provides a secure step area
- Auto safe-stop engages if an obstruction is detected
- Manual override interior switch included
- 600lb weight capacity each side
- Easy no-drill installation
- Powder coated high grade aluminum
- 1 year electrical/2 year mechanical warranty



FB-4500

### 2021-2024 FORD BRONCO

#### 4 DOOR E-POWER BOARD STEPS

- Low profile E-Step provides improved ground clearance while protecting the vital rocker panel
- 6" wide full cab length steps automatically deploy and retract when opening and closing vehicle door(s)
- Integrated led lights add visibility while the textured surface provides a secure step area
- Auto safe-stop engages if an obstruction is detected
- Manual override interior switch included
- 600lb weight capacity each side
- Easy no-drill installation
- Powder coated high grade aluminum
- 1 year electrical/2 year mechanical warranty



Professional Support at [BodyArmor4x4.com](mailto:BodyArmor4x4.com)

3 Year Finish | Limited Lifetime Warranty

Two-stage light texture black powder coat finish



## FORD BRONCO SOFT GOODS



91001

### 2021 - 2024 FORD BRONCO

#### 2/4DR MESH TOP

- Provides protection against the sun, and heat while allowing airflow
- Reduces wind noise
- Mesh top can be used with both hard and soft top
- Access point for hard top latches
- No need to remove
- Constructed with heavy duty UV and mildew resistant materials
- Easy to install, no additional hardware needed
- Fits both 2/4DR models



FB-2965

### 2021 - 2024 FORD BRONCO

#### 2/4DR FRONT SEAT COVER

- Neoprene construction offers excellent breathability and water resistance
- Multi-layered foam and polyesters provide padded comfort
- Protects OE seat from elements and common wear and tear
- Includes headrest covers
- Fits both 2/4DR models
- Will not fit OE integrated molle panel



FB-2965

### 2021 - 2024 FORD BRONCO

#### 4DR REAR SEAT COVERS

- Neoprene construction offers excellent breathability and water resistance
- Multi-layered foam and polyesters provide padded comfort
- Protects OE seat from elements and common wear and tear
- Includes headrest covers
- Fits both 2/4DR models
- Will not fit OE integrated molle panel







## JEEP COLLECTION

---

Embark on an adrenaline-fueled journey with our extraordinary selection tailored just for your Jeep! Whether you're conquering majestic mountains or blazing through scorching desert trails, we've got the ultimate gear to transform your ride into a 4x4 powerhouse.

Elevate your off-road experience with everything you desire and more – because your Jeep adventure deserves nothing but the absolute best!





## TUBE DOORS



JL-6154

### 2018-2024 JEEP WRANGLER JL & GLADIATOR JT

#### TUBE DOORS FRONT

- 2" steel tube construction
- Industry leading two-stage locking latch mechanism
- Anti-rattle bump stops and door limit straps
- Door height engineered for comfort
- Adjustable latch allows for easy alignment to factory door striker
- Mirror brackets designed to accommodate Body Armor 4x4 trails mirrors (pn: 5126)
- Sold in pairs



JL-6155

### 2018-2024 JEEP WRANGLER JL & GLADIATOR JT

#### TUBE DOORS REAR

- 2" steel tube construction
- Industry leading two-stage locking latch mechanism
- Anti-rattle bump stops and door limit straps
- Door height engineered for comfort
- Adjustable latch allows for easy alignment to factory door striker
- Sold in pairs



JK-6154

### 2007-2018 JEEP WRANGLER JK

#### TUBE DOORS FRONT

- 2" steel tube construction
- Industry leading two-stage locking latch mechanism
- Anti-rattle bump stops and door limit straps
- Door height engineered for comfort
- Adjustable latch allows for easy alignment to factory door striker
- Mirror brackets designed to accommodate Body Armor 4x4 trails mirrors only (pn: 5126)
- Sold in pairs



JK-6155

### 2007-2014 JEEP WRANGLER JK

#### TUBE DOORS REAR

- 2" steel tube construction
- Anti-rattle bump stops and door limit straps
- Door height engineered for comfort
- Adjustable latch allows for easy alignment to factory door striker
- Sold in pairs





## TRAIL DOORS



JL-6149

### 2018-2024 JEEP WRANGLER JL & GLADIATOR JT GEN3 TRAILDOORS FRONT

- 1.25" Steel tube and plate construction
- Industry-leading two stage locking latch mechanism
- Nylon webbing with padded arm rest included
- Adjustable hinges and latch plate for easy installation
- Anti-rattle bump stops
- Mirror brackets designed to accommodate Body Armor 4x4 trails mirrors only (pn: 5126)
- Sold in pairs



JL-6150

### 2018-2024 JEEP WRANGLER JL & GLADIATOR JT GEN3 TRAILDOORS REAR

- 1.25" Steel tube and plate construction
- Dual stage locking latch mechanism
- Nylon webbing with padded arm rest included
- Adjustable hinges and latch plate for easy installation
- Anti-rattle bump stops
- Sold in pairs



JK-6139

### 2007-2018 JEEP WRANGLER JK GEN 3 TRAILDOORS FRONT

- 1.25" Steel tube and plate construction
- Dual stage locking latch mechanism
- Nylon webbing with padded arm rest included
- Adjustable hinges and latch plate for easy installation
- Anti-rattle bump stops
- Mirror brackets designed to accommodate Body Armor 4x4 trails mirrors only (pn: 5126)
- Sold in pairs



JK-6140

### 2007-2018 JEEP WRANGLER JK GEN 3 TRAILDOORS REAR

- 1.25" Steel tube and plate construction
- Dual stage locking latch mechanism
- Nylon webbing with padded arm rest included
- Adjustable hinges and latch plate for easy installation
- Anti-rattle bump stops
- Sold in pairs





## DOORS & ACCESSORIES



TJ-6137

### 1997-2006 JEEP WRANGLER TJ & LJ

#### GEN3 TRAILDOORS FRONT

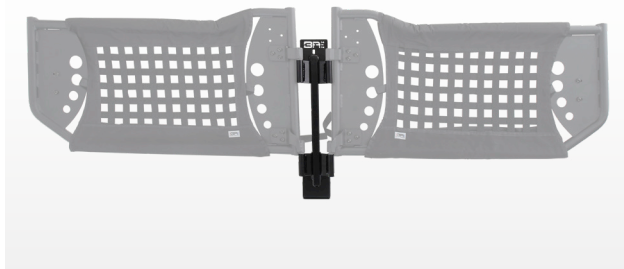
- 1.25" Steel tube and plate construction
- Dual stage locking latch mechanism
- Nylon webbing with padded arm rest included
- Adjustable hinges and latch plate for easy installation
- Anti-rattle bump stops
- Mirror brackets designed to accommodate Body Armor 4x4trails mirrors only (pn: Sold in pairs



5126

### MIRROR SET FOR TRAILDOORS FOR TRAIL & TUBE DOOR

- Designed to be installed on body armor tube & trail doors
- Driver and passenger side included
- Stainless steel hardware included
- Can be adjusted to multiple positions



5145

### 1997-2023 JEEP WRANGLER TJ, JK, JL & GLADIATOR JT DOOR STORAGE BAR

- 1" square tube and 4mm steel plates
- Works with both factory and aftermarket doors
- Fits TJ, JK, JL and JT models
- Holds up to two doors
- Includes mounting hardware





## JEEP JK|JL|JT BUMPERS



**A.** Orion Mid-Width Front Bumper JP-19536 **B.** Jeep Wrangler JL & Gladiator JT Front Fender Flares JL-6102 **C.** Jeep Wrangler JL & Gladiator JT Front Fender Liners JL-6100 **D.** Jeep Gladiator JT Rear Fender Flares JT-6103 **E.** Jeep Gladiator JT Rear Fender Liners JT-6101 **F.** Mid Size Universal Overland Rack TK-6126 **G.** Jeep Gladiator JT 4 Door Rockcrawler Side Steps JT-4121





JP-19535

**2007-2024 JEEP WRANGLER JK, JL & GLADIATOR JT**  
**ORION STUBBY FRONT BUMPER**

- High clearance design for better approach and departure angles
- Allows clearance for larger tires
- Compact design fits nice and tight while providing needed protection
- Fabricated grille guard and skid plate included
- Light fitment: 18" single row LED bar and 2 cube LEDs or O.E. fog lights (except steel bumper pkg)
- 12,000lb winch capacity (fits Warn Zeon winches and most standard winches)
- Integrated shackle recovery mounts
- 3/16" steel plate construction
- Will work with 4xe model with minor modifications
- Easy bolt-on installation



JP-19536

**2007-2024 JEEP WRANGLER JK, JL & GLADIATOR JT**  
**ORION MID-WIDTH FRONT BUMPER**

- High clearance design for better approach and departure angles
- Allows clearance for larger tires
- Compact design fit nice and tight while offering increased protection
- Fabricated grille guard and skid plate included
- Light fitment: 18" single row LED bar and 2 cube LEDs or O.E. fog lights (except steel bumper pkg)
- 12,000lb winch capacity (fits Warn Zeon winches and most standard winches)
- Integrated shackle recovery mounts
- 3/16" steel plate construction
- Will work with 4xe with minor modifications
- Easy bolt-on installation



JP-19537

**2007-2024 JEEP WRANGLER JK, JL & GLADIATOR JT**  
**ORION FULL-WIDTH FRONT BUMPER**

- High clearance design for better approach and departure angles
- Allows clearance for larger tires
- Compact design while offering the most protection
- Fabricated grille guard and skid plate included
- Light fitment: 18" single row led bar and 2 cube LEDs or O.E. fog lights (except steel bumper pkg)
- 12,000lb winch capacity (fits Warn Zeon winches and most standard winches)
- Integrated shackle recovery mounts
- 3/16" steel plate construction
- Will work with 4xe model with minor modifications
- Easy bolt-on installation



JL-19534

**2007-2024 JEEP WRANGLER JK, JL & GLADIATOR JT**  
**FULL-WIDTH FRONT BUMPER**

- Full width design
- 3/16" steel plate
- Fits factory fog lights (except steel bumper pkg)
- Two welded D-ring mounts
- 12,000lb winch capacity (fits warn zeon winches)
- Optional grille guards (JL-5124 or JL-5125) and skid plate available (JL-5123)





## JEEP JK|JL|JT BUMPERS & ACCESSORIES



JL-19532

### 2007-2024 JEEP WRANGLER JK, JL & GLADIATOR JT MID-STUBBY FRONT BUMPER

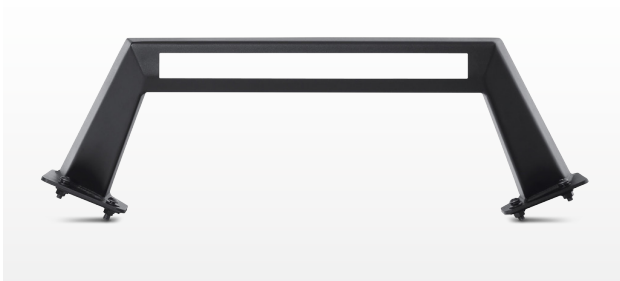
- Mid-width design allowing clearance for larger tires
- 3/16" steel plate
- Fits factory fog lights (except steel bumper pkg) or LED cube lights
- Two welded D-ring mounts
- 12,000lb winch capacity (fits warn zeon winches)
- Optional grille guards (JL-5124 or JL-5125) and skid plate available (JL-5123)



JL-5124

### 2018-2024 JEEP WRANGLER JK, JL & GLADIATOR JT TUBE GRILLE GUARD

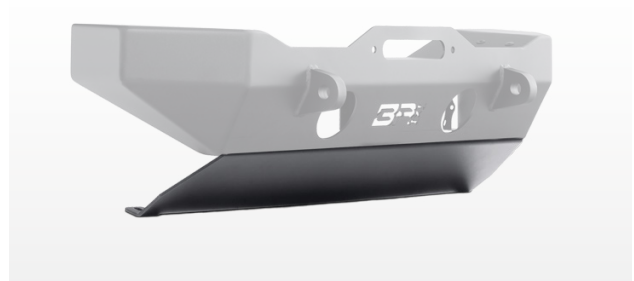
- 2" steel tube construction
- Bolt-on design for all Body Armor 4x4 JL front bumpers
- Welded adjustable light mount



JL-5125

### 2018-2024 JEEP WRANGLER JK, JL & GLADIATOR JT FABRICATED GRILLE GUARD

- 3/16" steel plate construction
- Bolt-on design for all Body Armor 4x4 JL front bumpers
- 18" single row light opening



JL-5123

### 2018-2024 JEEP WRANGLER JL & GLADIATOR JT FRONT BUMPER SKID PLATE

- 3/16" steel plate
- Bolt-on design for all Body Armor 4x4 JL front bumpers
- Protects under carriage and electronic sway bar disconnect on Rubicon models







**A.** Mid Stubby Front Bumper JL-19532 **B.** Tube Grille Guard JL-5124 **C.** Jeep Wrangler JL & Gladiator JT Front Fender Flares JL-6102 **D.** Jeep Wrangler JL & Gladiator JT Front Fender Liners JL-6100 **E.** Jeep Gladiator JT Rear Fender Flares JT-6103 **F.** Jeep Gladiator JT Rear Fender Liners JT-6101 **G.** Jeep Wrangler JL 4 Door Rockcrawler Side Steps JL-4121 **H.** Jeep Hinge Steps 5146 **I.** Sky Ridge 270 Awning Driver Side 20023 **J.** All Cube LED Light Spot 30040 **K.** 20" Blackout LED Light Bar Combo Beam 40022



## JEEP JL BUMPERS & ACCESSORIES



JL-2965

### 2018-2024 JEEP WRANGLER JL

#### FULL-WIDTH REAR BUMPER

- 3/16" steel plate construction
- Wrap around design fits both factory and aftermarket flares
- Bolt-on license plate frame with dot approved light
- Optional tire carrier sold separately (bumper mount: 5298 or tub mount: JL-5290)
- Retains O.E.M. tow hitch
- Accommodates rear parking sensors
- LED cube light cutouts



JL-2966

### 2018-2024 JEEP WRANGLER JL

#### ORION REAR BUMPER

- Compact design fits nice and tight while providing protection
- High clearance design for better approach and departure angles
- Accommodates O.E. hitch
- Integrated shackle recovery mounts
- Light fitment: 2 cube LEDs
- Optional tire carrier sold separately (bumper mount: 5298 or tub mount: JL-5290)
- 3/16" steel plate construction
- Easy bolt-on installation



5298

### 2018-2024 JEEP WRANGLER JL

#### TIRE CARRIER SINGLE ACTION

- Works with JL-2965/JL-2966 bumper
- Steel tube construction
- HD dual bearing pivot assembly
- Single action opening and closing with the tailgate
- Tire capacity 40"
- Retains O.E. camera and third brake light





## JEEP JL BUMPERS & ACCESSORIES






JL-5290

### 2018-2024t JEEP WRANGLER JL

#### RTC REINFORCED TIRE CARRIER

- Retains single-action opening and closing of tailgate
- Constructed out of strong cast aluminum
- Reinforced hinge plate adds structural rigidity and strength to the tub and body
- Protective gaskets included to protect finish
- Mounts up to 37" tire
- 3rd brake light mount included
- Works with aftermarket and O.E. Bumpers
- No drilling required



 Professional Support at [BodyArmor4x4.com](mailto:BodyArmor4x4.com)  
 3 Year Finish | Limited Lifetime Warranty  
 Two-stage heavy texture black powder coat finish

CALL TOLL FREE US 866.894.3351 | CANADA 877.326.0933



## JEEP JK BUMPERS & ACCESSORIES



A. Front Bumper Mid-Stubby JK-19532 B. 3/4" Red D-Ring With Isolators 3204 C. Mirror Set For Traildoors 5126 D. Jeep Wrangler JK Tube Doors Front JK-6154 E. Jeep Wrangler JK Tube Doors Rear JK-6155 F. Jeep Wrangler JK Bolt On Multi-Point Handle 5143 G. 2in-3in Roll Bar Grab Handle 5142



JK-19531

### 2007-2018 JEEP WRANGLER JK FRONT BUMPER FULL-WIDTH

- High clearance design
- Integrated winch plate: 2" diameter center hoop with light tabs
- Dual shackle plates for D-rings
- Mounting points on bumper wings for additional accessory lighting



JK-19532

### 2007-2018 JEEP WRANGLER JK FRONT BUMPER MID-STUBBY

- Mid-width design allowing clearance for larger tires
- 3/16" steel plate with reinforced winch tray
- Two welded D-ring mounts
- 10,000lb winch capacity (fits warn zeon winches)
- Fits LED style cube light, does not fit O.E. fog lights
- Optional skid plate available (JK-5123)





## JEEP JK BUMPERS & ACCESSORIES



JK-2965

### 2007-2018 JEEP WRANGLER JK

#### FULL-WIDTH REAR BUMPER

- 3/16" steel plate construction
- High clearance design
- Optional tire carrier sold separately (bumper mount: 5297 or tub mount: JK-5290)
- Retains O.E.M. tow hitch
- LED cube light cutouts

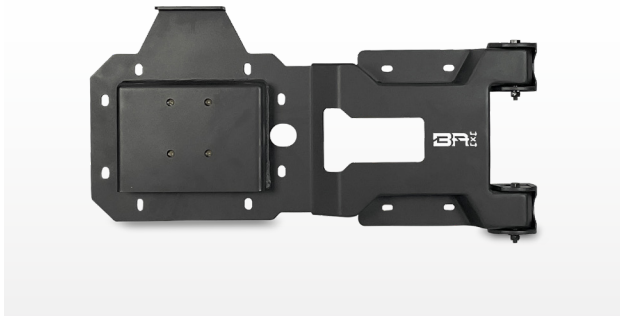


JK-2966

### 2007-2018 JEEP WRANGLER JK

#### ORION REAR BUMPER

- Compact design fits nice and tight while providing protection
- High clearance design for better approach and departure angles
- Accommodates O.E. hitch
- Integrated shackle recovery mounts
- Light fitment: 2 cube LED
- Optional tire carrier sold separately (bumper mount: 5297 or tub mount: JK-5290)
- 3/16" steel plate construction
- Easy bolt on installation

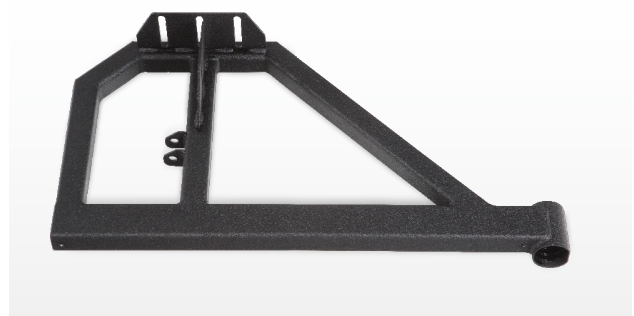


JK-5290

### 2007-2018 JEEP WRANGLER JK

#### RTC REINFORCED TIRE CARRIER

- Retains single action opening and closing of tailgate
- Reinforced design prevents potential damage to the body
- Protective gaskets included to protect finish
- Mounts up to 37" tire
- 3rd brake light mount included works with after market and o.e. bumpers
- No drilling required



5297

### 2007-2018 JEEP WRANGLER JK

#### TIRE CARRIER SINGLE ACTION

- Works with JK-2965/JK-2966 bumper
- Steel tube construction
- HD dual bearing pivot assembly
- Single action opening and closing with the tailgate
- Tire capacity 40"
- Does not accommodate factory third brake light





## JEEP JT & TJ BUMPER & ACCESSORIES



JT-2965

### 2019-2024 JEEP GLADIATOR JT

#### REAR BUMPER

- 3/16" steel plate
- Wrap around design
- Retains O.E.M. tow hitch
- Accommodates rear parking sensors
- Two welded d ring mounts
- LED cube light cutouts
- Optional side step JT-5100 and bed protector JT-5101 sold separately



TJ-19531

### 1987-2006 JEEP WRANGLER YJ & TJ

#### FRONT BUMPER

- 3/16" steel
- Integrated winch plate: single 2 hoop with two light tabs
- Skid plate for steering box
- Dual shackle plates for D-rings





## JEEP JT & TJ BUMPER & ACCESSORIES



JT-5101

### 2019-2024 JEEP GLADIATOR JT BED PROTECTOR

- 3/16" plate steel
- Bed protector requires JT-2965 and JT-5100
- Bolt-on design
- Fits factory and most aftermarket fender flares
- Sold in pairs



JT-5100

### 2019-2024 JEEP GLADIATOR JT BUMPER STEP

- 3/16" plate steel
- Bumper step for JT-2965
- Bolt-on design
- Uses factory frame mounting holes for extra support
- Will work with factory bumper with minor trimming
- Optional bed protector JT-5101
- Sold in pairs





## JEEP JL & JT FENDER FLARES & LINERS



JL-6102

### 2018-2024 JEEP WRANGLER JL & GLADIATOR JT FRONT FENDER FLARES

- 3/16" steel plate
- Front flare set
- High clearance flat design
- Provides 7" of coverage
- Includes DOT approved switch back driving light



JL-6100

### 2018-2024 JEEP WRANGLER JL & GLADIATOR JT FRONT FENDER LINERS

- Bolt-on installation
- Designed to work with BA 4x4 fender flares
- Removable panel for most aftermarket hose reservoir shocks
- Protects engine bay from mud and debris





## JEEP JL & JT FENDER FLARES & LINERS



JL-6103

### 2018-2024 JEEP WRANGLER JL

#### REAR FENDER FLARES

- 3/16" steel plate
- Rear flare set
- High clearance flat design
- Provides 5 3/4" of coverage



JL-6101

### 2018-2024 JEEP WRANGLER JL

#### REAR FENDER LINERS

- Bolt-on installation
- Designed to work with BA 4x4 fender flares
- Improves the look of the stock wheel wells
- Protects fuel filler from mud and debris



JT-6103

### 2019-2024 JEEP GLADIATOR JT

#### REAR FENDER FLARES

- 3/16" Steel plate
- Rear flare set
- High clearance flat design
- Provides 5 3/4" of coverage



JT-6101

### 2019-2024 JEEP GLADIATOR JT

#### REAR FENDER LINERS

- Bolt-on installation
- Designed to work with BA 4x4 fender flares
- Improves the look of the stock wheel wells
- Protects fuel filler from mud and debris
- Works with O.E. stock flare but will not work with antirock sway bar





## JEEP JK|JL|JT RACK & STORAGE SYSTEMS

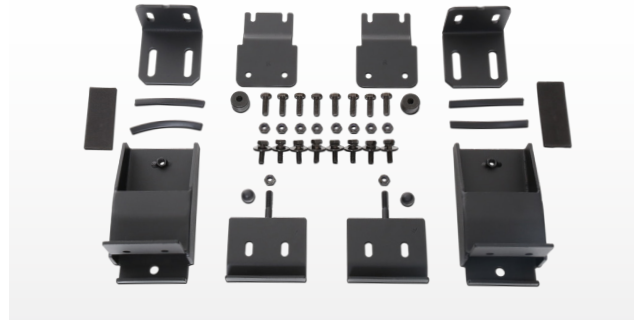


5160

### 2007-2024 JEEP WRANGLER JK & JL

#### HARDTOP ROOF RACK

- 14 gauge steel plate
- Easy no-drill design
- Required mounting brackets Jeep JK (JK-6121) or Jeep JL (JL-6121)
- Fits both 2 door and 4 door models
- Sits approx. 8 inches above your O.E. hardtop
- Weight capacity 150 LBS
- Light fitment: front 50" dual row LED or multi light mount, sides: 4 cube LEDs, rear: 2 cube LEDs



JK-6121 | JL-6121

### 2007-2024 JEEP WRANGLER JK & JL

#### ROOF RACK MOUNT KIT

- Roof rack mounting bracket for (5160 rack)
- Fits both 2 door and 4 door models
- Weight capacity 150 LBS



## JEEP JK|JL|JT RACK & STORAGE SYSTEMS



5147

### 2007-2024 JEEP WRANGLER JK & JL UNLIMITED INTERIOR CARGO RACK

- Easy bolt-in design
- 150 LB weight capacity
- Works with hardtop, soft top (lose retract feature), or no top
- Fits 4 door models only
- 22" clearance below rack (JL model)
- Side slots for tie down points
- Cargo area 40.5" x 19.25"



\*Does not work with Sky One Touch without modification



JK-7100

### 2007-2018 JEEP WRANGLER JK 4 DOOR CARGO ROOF RACK

- Constructed of 2" 120 Wall steel tube
- Simple bolt-on installation with all Body Armor 4x4 bumpers
- Fits factory bumpers with slight modifications
- 4 Crossbars designed to be used with most aftermarket accessories
- Easy access to soft or hard top with removable crossbars
- 4 Front light tabs and 2 rear light tabs
- Dynamic rating of 350 LB and static rating of 700lb



JK-7101

### 2007-2018 JEEP WRANGLER JK 2 DOOR CARGO ROOF RACK

- Constructed of 2" 120 Wall steel tube
- Simple bolt-on installation with all Body Armor 4x4 bumpers
- Fits factory bumpers with slight modifications
- 3 Crossbars designed to be used with most aftermarket accessories
- Easy access to soft or hard top with removable crossbars
- 4 Front light tabs and 2 rear light tabs
- Dynamic rating of 350 LB and static rating of 700lb



JK-7102

### 2007-2018 JEEP WRANGLER JK 2 1/4 DOOR CARGO ROOF RACK ACCESSORY MOUNT

- Mount rotopax containers, Hi-Lift jack, Quick Fist Mounts, molle bags, and other accessories
- Incorporated step pad (250 LB load limit) for easy access to roof
- Sold in pairs





## JEEP JK | JL | JT | TJ SIDE STEPS



JT-4121

### 2019-2024 JEEP GLADIATOR JT

#### ROCKCRAWLER SIDE STEPS

- 2"x3" steel tube construction with a 1.5" kick out tube
- Wheel to wheel protection accommodating large tire sizes
- Easy installation using factory rock rail mounts

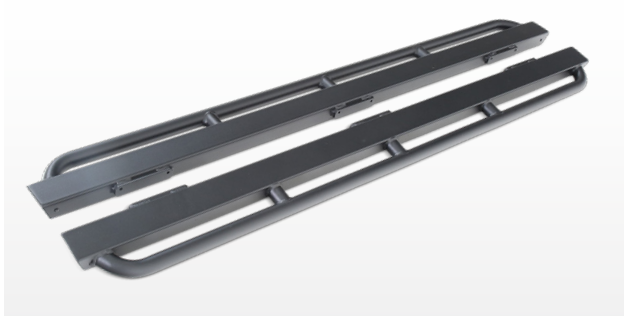


4 Door JL-4121

### 2018-2024 JEEP WRANGLER JL

#### ROCKCRAWLER SIDE STEPS

- 2"x3" steel tube construction with a 1.5" kick out tube
- Wheel to wheel protection accommodating large tire sizes
- Easy installation using factory rock rail mounts

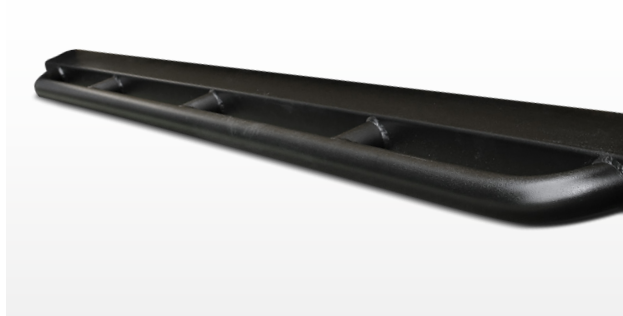


4 Door JK-4122

### 2007-2018 JEEP WRANGLER JK

#### ROCKCRAWLER SIDE STEPS

- Added protection for the extreme user
- Wheel well to wheel well Body Armor 4x4 protection
- No-drill body and pinch weld installation
- 2"x3" tube combined with kick out rail



TJ-4121

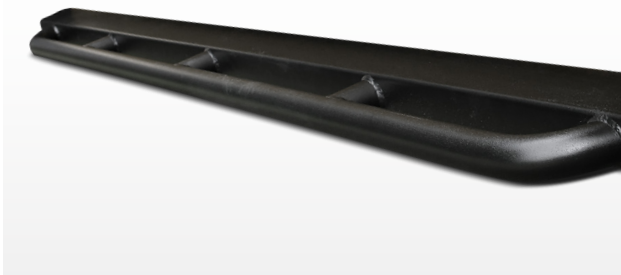
### 1997-2006 JEEP WRANGLER TJ

#### ROCKCRAWLER SIDE STEPS

- Added protection for the extreme user
- Wheel well to wheel well body armor protection
- No-drill chassis mount installation
- 2"x3" tube combined with kick out rail



## JEEP LJ SIDE STEPS



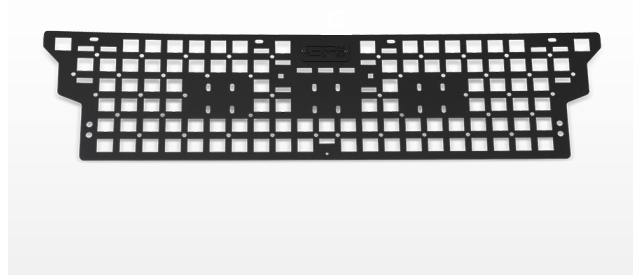
WU-4121

### 2004-2006 JEEP WRANGLER LJ ROCKCRAWLER SIDE STEPS

- Added protection for the extreme user
- Wheel well to wheel well body armor protection
- No-drill chassis mount installation
- 2x3 tube combined with kick out rail



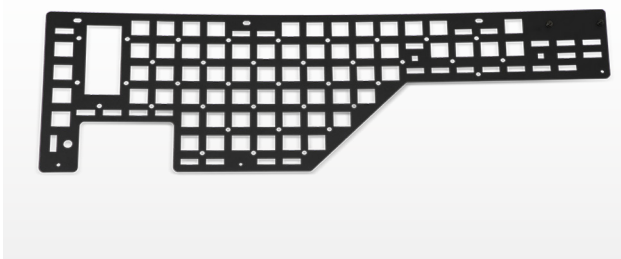
## JEEP JT MOLLE SYSTEM



JT-7126

### 2019-2024 JEEP GLADIATOR JT FRONT BED MOLLE SYSTEM

- Mount Rotopax containers, Hi-Lift jack, Quick Fist Mounts, molle bags, and other accessories • Includes Hi-Lift mounting hardware
- Mounts behind utility rail and allows full use with most accessories and tonneau covers
- 3mm formed steel
- 1 Pc design for maximum strength
- Easy bolt on installation



JT-7125

### 2019-2024 JEEP GLADIATOR JT BED SIDE MOLLE SYSTEM

- Mount Rotopax containers, Hi-Lift jack, Quick Fist Mounts, molle bags, and other accessories
- Includes Hi-Lift mounting hardware
- Mounts behind utility rail and allows full use with most accessories and tonneau covers
- 3MM formed steel
- Easy bolt-on installation
- Fits driver or passenger side





## JEEP ACCESSORIES



5165

### 1986-2018 JEEP WRANGLER

#### LED 3RD BRAKE LIGHT

- Fits YJ, TJ, JK and JL models
- Universal fitment with minor modifications
- Fits 6x5 or 6x139.7 lug pattern with minor modifications
- Fits bolt patterns 5x4.5, 5x5 and 5x5.5
- Works with most wheel sizes 16" or larger
- Easy installation splicing into OE wiring (connectors included)
- 85 individual 5-watt LED IP67 waterproof rated



JK-5120

### 1987-2083 JEEP WRANGLER

#### ELEVATED THIRD BRAKE LIGHT

- Bolts to existing holes in the tailgate
- Can be seen over 37 inch tires
- Utilizes dot led light for better visibility
- Can be installed on YJ, TJ and JK models



## JEEP ACCESSORIES



5143

### 2007-2018 JEEP WRANGLER JK

#### BOLT ON MULTI-POINT HANDLE

- Nylon webbing and heavy duty steel grommets
- Fits factory mounting points and or universal multi-point handle
- Versatile mounting options including front pillars, headrests, rear roll bar, bed racks, roof racks, etc.
- Anti-slip handle grips
- Sold in pairs



5142

### 2-3" ROLL BAR GRAB HANDLE

- Nylon webbing and industrial grade velcro
- Built for 2-3 inch roll bars and or roll cages
- Universal and versatile mounting options
- Anti-slip handle grips
- Sold in pairs



JK-6126

### 2007-2018 JEEP WRANGLER JK

#### WINDSHIELD LIGHT BAR

- Diameter tubular light bar
- 4 Light tabs
- Bolt-on installation



5146

### 2007-2024 JEEP WRANGLER & GLADIATOR

#### HINGE STEPS

- Fits 2007-2024 model JL, JK, and JT Wranglers
- Easy no-drill installation
- 1/8" steel plate
- 350 LB load limit
- Non-slip serrated step pad
- Included new hardware and rubber pads to protect paint







## TOYOTA COLLECTION

---

Rev up your Toyota adventure with the unbeatable prowess of Body Armor 4x4 accessories! Elevate your ride with a fusion of reliability and robust style. Whether it's the trail-tackling bumpers or the game-changing overland racks, we've got the keys to transforming your Toyota into a show-stopping powerhouse.

Gear up for the ultimate blend of protection and flair – because your Toyota deserves nothing but the best!





## TOYOTA TACOMA BUMPERS



TC-19339

### 2016-2023 TOYOTA TACOMA

#### HILINE FRONT WINCH BUMPER

- High clearance bumper with a sleek low-profile design
- Increase approach and departure angles
- Welded bull bar
- 10,000 LB winch capacity (fits warn zeon winches)
- Integrated shackle recovery points
- Light fitment: 20" dual row LED
- Accommodates factory TRD skid plate
- Direct bolt on, no drill
- Requires trimming of factory bumper
- Includes license plate bracket



TC-19339W

### 2016-2023 TOYOTA TACOMA

#### HILINE FRONT BUMPER WINGS

- Compact design, fits nice and tight while providing corner protection
- Increased clearance for better approach and departure angles
- Allows for bigger tires
- Provisions for 6" single row LED light bar side or stem mount
- Bolts onto Hiline Bumper without drilling
- Requires some trimming of factory bumper





## TOYOTA TACOMA BUMPERS



TC-19338

### 2016-2023 TOYOTA TACOMA

#### PRO SERIES FRONT WINCH BUMPER

- 3/16" Plate bumper and 1/4" winch mount
- High clearance design for better approach angles
- Accommodates factory TRD skid plate
- Requires trimming of factory bumper
- 10,000 LB winch capacity (fits warn zeon winches)
- Light fitment: 30" dual row LED and two cube lights



TC-19337

### 2016-2023 TOYOTA TACOMA

#### DESERT SERIES FRONT WINCH BUMPER

- Two-piece construction with subframe winch mount
- Tubular frame with sheet metal support
- High clearance design
- 10,000 LB winch capacity (fits warn zeon winches)
- Light fitment: front 20" double row LED & 4 cube lights



## TOYOTA TACOMA BUMPERS



TC-2964

### 2005-2015 TOYOTA TACOMA

#### PRO SERIES REAR BUMPER

- 3/16" steel plate
- Designed for optimal approach and departure angles
- Bolt-on installation
- Works with oem receiver
- Cutouts for auxiliary lighting
- Fits body armor and most cube lights (excluding flush mount)
- Integrated shackle recovery points



TC-2963

### 2016-2023 TOYOTA TACOMA

#### PRO SERIES REAR BUMPER

- 3/16" Steel plate
- Does not fit blind-spot monitors
- Accommodates O.E. parking sensor
- Bolt-on installation
- Works with O.E.M. receiver
- Light fitment: two cube lights







**A.** Toyota Tacoma Hilene Front Winch Bumper TC-19339 **B.** Hilene Front Bumper Wings TC-19339W **C.** Revo Series Rock Slider TC-4124 **D.** 20" LED Light Bar 40022



## TOYOTA TACOMA BUMPERS



TC-19340

### 2012-2015 TOYOTA TACOMA

#### HILINE FRONT WINCH BUMPER

- Bolt-on bullbar included
- High clearance design that accommodates factory TRD skid plate
- Requires trimming of factory bumper
- Includes license plate bracket
- 10,000 LB winch capacity (fits warn zeon winches)
- Light fitment: 20" dual row LED



TC-19341

### 2005-2015 TOYOTA TACOMA

#### PRO SERIES FRONT WINCH BUMPER

- High clearance design that accommodates factory TRD skid plate
- 10,000 LB winch capacity (fits warn zeon winches)
- Winch cutouts for quick access
- Includes license plate bracket
- Light fitment: 30" dual row LED and two cube lights
- 3/16" Plate bumper and 1/4" winch mount
- Requires trimming of factory bumper





## TOYOTA TACOMA BUMPERS & ACCESSORIES



TC-19336

### 2012-2015 TOYOTA TACOMA

#### FRONT WINCH BUMPER

- 3/16" steel plate with a 1/4" thick winch tray
- 10,000lbs winch capacity
- Light fitment: up to 4" round aftermarket lights



TC-19335

### 2005-2011 TOYOTA TACOMA

#### FRONT WINCH BUMPER

- 1/4" Thick integrated winch plate
- Up to 10000 lbs. Low profile winch capacity
- Dual shackle plates for D-rings



TC-2961

### 2005-2015 TOYOTA TACOMA

#### REAR BUMPER

- 3/16" Steel
- No drill installation
- Works with OEM receiver
- License plate relocation included
- Works with TC-5293 tire carrier



TC-5293

### 2005-2015 TOYOTA TACOMA

#### PRO SERIES TIRE CARRIER

- 2" Square tube design
- Attaches to Tacoma rear bumper TC-2961
- Carries up to 35" tall tire
- Easy no-drill installation
- Retains shackle plate for D-rings



## TOYOTA 4RUNNER BUMPERS



TR-19339

### 2014-2024 TOYOTA 4RUNNER

#### HILINE FRONT BUMPER

- High clearance design that accommodates factory TRD skid plate
- Removable bull bar to accommodate 2020 models with TSS\*
- Requires trimming of factory bumper
- 10,000lb winch capacity
- Light fitment: 20" dual row LED
- Excludes Nighshade and Limited models
- KDSS models may need to modify factory plastic filler panel if being used



\*Removal of bull bar for TSS may be necessary depending individual basis



TR-19339W

### 2014-2024 TOYOTA 4RUNNER

#### HILINE FRONT BUMPER HIGH-CLEARANCE WINGS

- Compact Design Fits Nice And Tight While Providing Corner Protection
- Increased Clearance For Better Approach And Departure Angles
- Allows For Bigger Tires
- Provisions For 6" Single Row Led Light Bar Side Or Stem Mount
- Bolts Onto Bodyarmor 4x4 Hiline Bumper Without Drilling Or Modification
- Includes A Washer Fluid Reservoir Guard
- Requires Some Trimming Of Factory Bumper
- Sold As Pair



Professional Support at [BodyArmor4x4.com](http://BodyArmor4x4.com)  
 3 Year Finish | Limited Lifetime Warranty  
 Two-stage heavy texture black powder coat finish

CALL TOLL FREE US 866.894.3351 | CANADA 877.326.0933



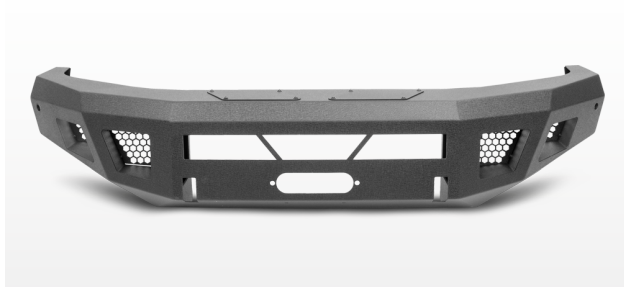
## TOYOTA TUNDRA BUMPERS



TN-19339

### 2014-2021 TOYOTA TUNDRA HILINA FRONT WINCH BUMPER

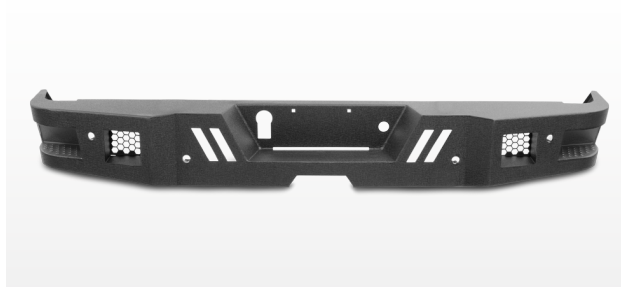
- Sleek low-profile design
- Maximizes recovery options
- Bolt-on bull bar
- 10,000lbs winch capacity (fits warn Zeon winches)
- Cutouts for quick winch access
- Integrated shackle recovery points
- Light fitment: 20" dual row led
- Accommodates factory TRD skid plate
- Direct bolt-on, no drill
- Requires trimming of factory bumper
- Includes swivel license plate bracket



TN-19336

### 2014-2021 TOYOTA TUNDRA ECO SERIES FRONT WINCH BUMPER

- 1/8" Steel plate with 1/4" winch plate for strength
- 12,000lb winch capacity
- OE sensor compatible
- Easy bolt-on installation
- Includes license plate bracket
- Light fitment: 30" dual row LED middle & 4 cube LEDs



TN-2962

### 2014-2021 TOYOTA TUNDRA ECO SERIES REAR BUMPER

- 1/8" Steel plate
- Retains factory tow hitch
- Built-in step pockets for easy bed access
- OE sensor compatible
- Light fitment: 4 cube LEDs



## TOYOTA FJ BUMPERS



FJ-19336

### 2007-2014 TOYOTA FJ CRUISER

#### FRONT WINCH BUMPER

- 3/16" Inch steel plate construction
- Sub-frame winch mount plates mount directly to frame
- Up to 10000lb Low profile winch capacity
- Shackle plates tie into frame rails
- 4" light pockets for additional lights
- No drill installation



FJ-2961

### 2007-2014 TOYOTA FJ CRUISER

#### REAR BUMPER

- 3/16" Cold rolled steel plate construction
- Dual shackle plates tie to frame brackets
- Will allow for TC-5293 swing arm
- Stronger than OEM bumper
- Easy at home installation with only hand tools
- Return OEM tow hitch





## TOYOTA TACOMA, 4RUNNER, & TUNDRA CREWMAX STEPS



TR-4124

### 2010-2024 TOYOTA 4RUNNER

#### REVO SERIES STEP SLIDER

- 0 Degree angle; 1.75" Tubing .120" Wall
- Designed to provide added protection between your vehicle and obstacles
- Easy installation-no drilling required
- 100% Frame mounted utilizing factory hole locations
- Solid step along the entire cab gives great access to inside or top of the SUV
- Strong anchor points allow rock sliders to be lifted with a hi-lift jack at any point
- Protects rocker panels and or against door dings



TR-4125

### 2010-2024 TOYOTA 4RUNNER

#### REVO SERIES ROCK SLIDER

- 25 Degree angle; 1.75" Tubing .120" Wall
- Designed to provide added protection between your vehicle and obstacles
- Slight kickout adds rear protection while still being less susceptible to getting hung up on obstacles
- Easy installation-no drilling required
- 100% Frame mounted utilizing factory hole locations
- Strong anchor points allow rock sliders to be lifted with a hi-lift jack at any point
- Protects rocker panels and or against door dings



# TOYOTA TACOMA, 4RUNNER, & TUNDRA CREWMAX STEPS



TC-4124

## 2005-2023 TOYOTA TACOMA

### REVO SERIES STEP SLIDER

- 0 Degree angle
- 1.75" Tubing .120" Wall
- Designed to provide added protection between your vehicle and obstacles
- Easy installation-no drilling required
- 100% Frame mounted utilizing factory hole locations
- Solid step along the entire cab gives great access to inside or top of the truck
- Strong anchor points allow rock sliders to be lifted with a hi-lift jack at any point
- Protects rocker panels and or against door dings
- Fits 5ft bed



TC-4125

## 2005-2023 TOYOTA TACOMA

### REVO SERIES ROCK SLIDER

- 25 Degree angle for added protection and to slide off rocks
- Slight kick out adds rear protection while still being less susceptible to getting hung up on obstacles
- 1.75" Tubing
- Easy installation
- No drilling required -bolts through factory hole locations
- Strong anchor points allow rock sliders to be lifted with a hi-lift jack at any point
- Protects rocker panels and or against door dings
- Fits 5ft bed



TN-4500

## 2022-2024 TOYOTA TUNDRA CREWMAX

### E-POWER BOARD STEPS

- Low profile E-Step provides improved ground clearance while protecting the vital rocker panel
- 6" wide full cab length steps automatically deploy and retract when opening and closing vehicle door(s)
- Integrated led lights add visibility while the textured surface provides a secure step area
- Auto safe-stop engages if an obstruction is detected
- Manual override interior switch included
- 600lb weight capacity each side
- Easy no-drill installation
- Powder coated high grade aluminum
- 1 year electrical/2 year mechanical warranty





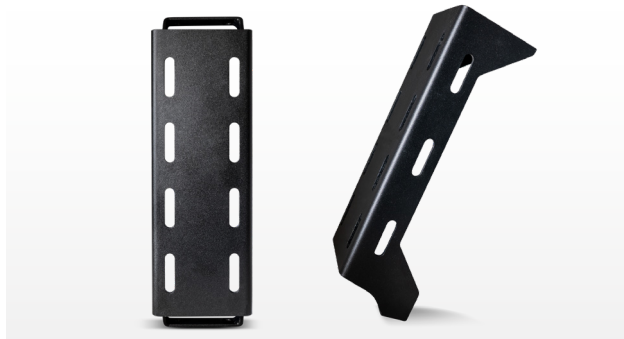
## TOYOTA TACOMA RACK SYSTEMS



TC-6125

### 2005-2023 TOYOTA TACOMA OVERLAND RACK

- Fits 5' beds
- Bolt-on installation using factory mounts
- Includes two accessory mounts
- Allows the use of the factory bed rails
- Mounts fit most universal roof-top tents



TC-6126

### 2005-2023 TOYOTA TACOMA OVERLAND RACK ACCESSORY MOUNT

- Universal overland rack accessory mount fits TC-6125 rack
- Allows multiple cargo configurations
- Sold in singles



TK-6126

### UNIVERSAL OVERLAND RACK

#### MID SIZE

- Universal bed fitment
  - Overall rack length is 54" and height of 15.8"
  - Fits beds with an inside rail measurement of 52.5"-58.5" and bed lengths 5.5' and longer
- Multiple bed mount options: no-drill rail clamps
- Drill mounting plate and optional utility track mount kit pn: TK-6128
- Static weight 800lbs
- Dynamic weight 350lbs
- Includes two accessory mounts, additional mounts available TK-6127
- Tent mounts fit sky ridge series rtt and most universal rtt
- Not designed to work with tonneau covers



Note: Mid-size rack is designed for the Toyota Tacoma, Ford Ranger, Jeep Gladiator, and more. Longer bed applications will have extra room in the rear of the rack



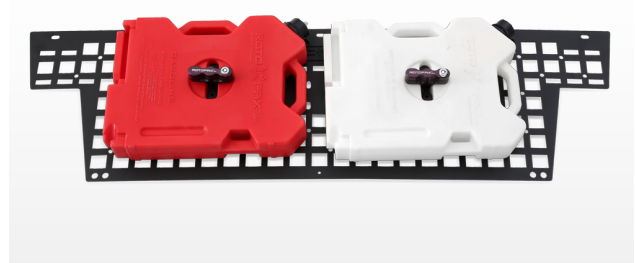
## TOYOTA TACOMA BED MOLLE SYSTEMS



TC-7125

### 2005-2023 TOYOTA TACOMA SIDE BED MOLLE SYSTEM

- Mount Rotopax containers, Hi-Lift jack, Quick Fist Mounts, molle bags and other accessories
- Includes Hi-Lift mounting hardware
- Mounts behind utility rail and allows full use with most accessories and tonneau covers
- 3MM formed steel
- Easy bolt on installation
- Fits driver or passenger side
- 2 pc design works with short or long bed
- Does not fit Toyota OE bed light systems



TC-7126

### 2005-2023 TOYOTA TACOMA FRONT BED MOLLE SYSTEM

- Mount Rotopax containers, Hi-Lift jack, Quick Fist Mounts, molle bags and other accessories
- Includes Hi-Lift mounting hardware
- Mounts behind utility rail and allows full use with most accessories and tonneau covers
- 3MM formed steel
- 1 pc design works for maximum strength
- Easy bolt on installation







## CHEVY COLLECTION

---

Unleash the full potential of your ride as you explore a world of top-notch gear, from protective bumpers to sleek steps. Gear up for the ultimate adventure, ensuring not just style but unbeatable protection on every road.

Elevate your Chevy experience with the finest accessories – because the road is yours to conquer, and we've got the products to make it epic!



## CHEVY SILVERADO BUMPERS



GM-19344

### 2019-2022 CHEVY SILVERADO 1500

#### AMBUSH SERIES FRONT BUMPER

- 3/16" and 1/4" cold roll steel
- Easy bolt on installation: O.E. sensor compatible
- Two welded D-ring mounts
- Non-winch compatible
- Two-stage light texture finished in black
- Intercooler shroud required for diesel engine, optional for gas engine PN: GM-5966
- Light fitment: 30" dual row LED bar and 2 cube LEDs



\*Does not fit 2022+ refresh model



GM-2966

### 2019-2022 CHEVY SILVERADO 1500

#### AMBUSH SERIES REAR BUMPER

- 3/16" And 1/4" cold roll steel
- Easy bolt-on installation
- O.E. sensor compatible
- Two welded D-ring mounts
- Accommodates factory hitch
- Light fitment: 2 cube LEDs



\*Does not fit Super Cruise High Country 2022+



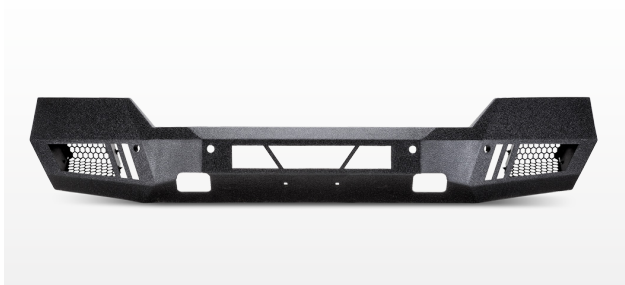
## CHEVY SILVERADO BUMPERS



GM-5966

### 2019-2023 CHEVY SILVERADO 1500 AMBUSH SERIES INTERCOOLER SHROUD

- Intercooler shroud for diesel and gas engine
- Easy bolt-on installation
- Protects from debris



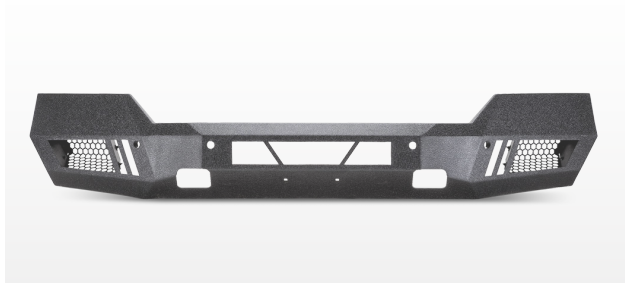
GM-19336

### 2016-2018 CHEVY SILVERADO 1500 ECO SERIES FRONT BUMPER

- 1/8" Thick steel plate
- Add aggressive style without weighing down the vehicle
- Easy bolt-on installation
- Non-winch capable
- O.E. sensor compatible
- Includes license plate bracket
- Light fitments: 20" dual row LED middle & 4 cube LEDs



# CHEVY SILVERADO & GMC SIERRA BUMPERS

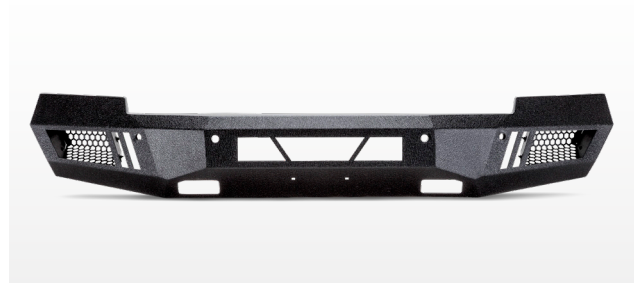


GM-19343

## 2007-2013 CHEVY SILVERADO 1500

### ECO SERIES FRONT BUMPER

- 1/8" Thick steel plate
- Adds aggressive style without weighing down the vehicle
- Easy bolt-on installation
- Non-winch capable
- O.E. sensor compatible
- Includes license plate bracket
- Light fitments: 20" dual row LED middle & 4 cube LEDs



GM-19335

## 2014-2015 CHEVY SILVERADO 1500

### ECO SERIES FRONT BUMPER

- 1/8" Thick steel plate
- Add aggressive style without weighing down the vehicle
- Easy bolt-on installation
- Non-winch capable
- O.E. sensor compatible
- Includes license plate bracket
- Light fitments: 20" dual row LED middle & 4 cube LEDs



GM-2961

## 2007-2018 CHEVY SILVERADO 1500

### ECO SERIES REAR BUMPER

- 1/8" Steel plate
- Retains factory tow hitch
- Built-in step pockets for easy bed access
- O.E. sensor compatible
- Light fitment: 4 cube LEDs



GM-2961

## 2007-2018 GMC SIERRA 1500

### ECO SERIES REAR BUMPER

- 1/8" Steel plate
- Retains factory tow hitch
- Built-in step pockets for easy bed access
- O.E. sensor compatible
- Light fitment: 4 cube LEDs





## CHEVY SILVERADO & GMC SIERRA STEPS



GM-4501

### 2019-2024 CHEVY SILVERADO/GMC SIERRA 1500, 2500/3500 CREW CAB

#### E-POWER BOARD STEPS

- Low profile E-Step provides improved ground clearance while protecting the vital rocker panel
- 6" wide full cab length steps automatically deploy and retract when opening and closing vehicle door(s)
- Integrated led lights add visibility while the textured surface provides a secure step area
- Auto safe-stop engages if an obstruction is detected
- Manual override interior switch included
- 600lb weight capacity each side
- Easy no-drill installation
- Powder coated high grade aluminum
- 1 year electrical/2 year mechanical warranty



GM-4500

### 2014-2018 CHEVY SILVERADO/GMC SIERRA 1500, SILVERADO/SIERRA 2500/3500

#### E-POWER BOARD STEPS

- Low profile E-Step provides improved ground clearance while protecting the vital rocker panel
- 6" wide full cab length steps automatically deploy and retract when opening and closing vehicle door(s)
- Integrated led lights add visibility while the textured surface provides a secure step area
- Auto safe-stop engages if an obstruction is detected
- Manual override interior switch included
- 600lb weight capacity each side
- Easy no-drill installation
- Powder coated high grade aluminum
- 1 year electrical/2 year mechanical warranty



\*Does NOT fit models with a DEF tank.  
\*ONLY fits gas models.

## CHEVY SILVERADO & GMC SIERRA STEPS



GM-4200

**2019-2023 CHEVY SILVERADO/GMC SIERRA 1500 CREW CAB**  
**2020-2023 CHEVY SILVERADO/GMC SIERRA**  
**2500/3500 CREW CAB**

### AMBUSH SERIES SIDE STEPS

- Sleek fitting main bar sits high and tight to the vehicle body
- 2" Ergonomic style drop step strategically placed at the door
- Steel construction for strength and durability
- Cab length configuration



GM-4201

**2007-2018 CHEVY SILVERADO/GMC SIERRA 1500 CREW CAB**  
**2007-2019 CHEVY SILVERADO/GMC SIERRA**  
**2500/3500 CREW CAB**  
 INCL. DIESEL MODELS WITH DEF TANKS

### AMBUSH SERIES SIDE STEPS

- Sleek fitting main bar sits high and tight to the vehicle body
- 2" Ergonomic style drop step strategically placed at the door
- Steel construction for strength and durability
- Cab length configuration





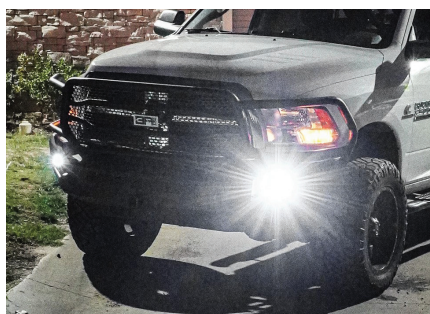


## DODGE COLLECTION

---

Revitalize your Dodge Ram and take it to unparalleled heights! Discover the epitome of quality and aesthetics with our cutting-edge aftermarket bumpers. Prepare for a jaw-dropping transformation that not only boosts performance but also ensures your Ram stands out as a true trendsetter.

Buckle up for the ultimate upgrade because, with Body Armor 4x4, greatness isn't just a choice – it's a thrilling reality for your Dodge Ram!



## DODGE RAM BUMPERS



DG-20339

### 2019-2024 DODGE RAM 2500/3500

#### AMBUSH XT FRONT BUMPER (NON-WINCH)

- Sleek modern design that contours and follows O.E. body lines
- One-piece wrap-around design protects grille and headlights
- 2" main tube and 1.25"-1.50" supporting tubes
- Mesh screen allows maximum airflow while protecting vital components
- Integrated 2" receiver and shackle recovery mounts
- Light fitment: 30" dual row LED bar and 2 cube LEDs
- O.E. sensor compatible
- Includes skid plate
- 3/16" and 1/4" cold roll steel
- Easy bolt-on installation



DG-20338

### 2010-2018 DODGE RAM 2500/3500

#### AMBUSH XT FRONT BUMPER (NON-WINCH)

- Sleek modern design that contours and follows O.E. body lines
- One-piece wrap-around design protects grille and headlights
- 2" main tube and 1.25"-1.50" supporting tubes
- Mesh screen allows maximum airflow while protecting vital components
- Integrated 2" receiver and shackle recovery mounts
- Light fitment: 30" dual row LED bar and 2 cube LEDs
- O.E. sensor compatible
- Includes skid plate
- 3/16" and 1/4" cold roll steel
- Easy bolt-on installation



DG-21339

### 2019-2024 DODGE RAM 2500/3500

#### AMBUSH SERIES FRONT BUMPER (NON-WINCH)

- Sleek modern design that contours and follows O.E. body lines
- Integrated shackle recovery mounts
- Light fitment: 30" dual row LED bar and 2 cube LEDs
- O.E. sensor compatible
- Includes skid plate
- Non-winch compatible
- 3/16" and 1/4" cold roll steel
- Easy bolt-on installation





## DODGE RAM BUMPERS



DG-19343

### 2019-2024 DODGE RAM 1500

#### AMBUSH SERIES FRONT WINCH BUMPER

- 3/16" And 1/4" cold roll steel
- Easy bolt-on installation
- O.E. sensor compatible
- Two welded D-ring mounts
- Non-winch compatible
- Light fitment: 30" dual row LED bar & 2 cube LEDs



\*Does not fit Classic, EcoDiesel, Rebel or Warlock models

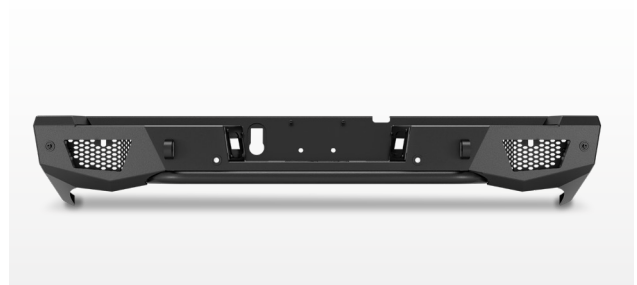


DG-2966

### 2019-2024 DODGE RAM 1500

#### AMBUSH SERIES REAR BUMPER

- 3/16" And 1/4" cold roll steel
- Easy bolt-on installation
- O.E. sensor compatible
- Two welded D-ring mounts
- Light fitment: 2 cube LEDs



DG-3163

### 2010-2024 DODGE RAM 2500/3500

#### AMBUSH SERIES REAR BUMPER

- Sleek modern design that contours and follows O.E. body lines
- Integrated shackle recovery mounts
- Light fitment: 2 cube LEDs
- O.E. sensor compatible
- Accommodates O.E. hitch
- 3/16" and 1/4" cold roll steel
- Easy bolt-on installation



## DODGE RAM BUMPERS



DG-19339

### **2013-2018 DODGE RAM 1500 & CLASSIC ECO SERIES FRONT BUMPER**

- 1/8" Thick steel plate
- Add aggressive style without weighing down the vehicle
- Easy bolt-on installation
- Non-winch capable
- O.E. sensor compatible
- Light fitments: 20" dual row LED middle & 4 cube LEDs
- Includes license plate bracket



\*Does not fit Rebel or Warlock models



DG-2964

### **2009-2024 DODGE RAM 1500 & CLASSIC ECO SERIES REAR BUMPER - DUAL REAR EXHAUST ONLY**

- 1/8" Steel plate
- Retains factory tow hitch
- Built-in step pockets for easy bed access
- O.E. sensor compatible
- Light fitment: 4 cube LEDs





## DODGE RAM BUMPERS



DG-19338

### 2010-2018 DODGE RAM 2500/3500

#### ECO SERIES FRONT WINCH BUMPER

- 1/8" Steel plate with 1/4" winch plate for strength
- 12,000 LB winch capacity
- O.E sensor compatible
- Easy bolt-on installation
- Includes license plate bracket
- Light fitment: 30" dual row LED middle & 4 cube LEDs



DG-2963

### 2010-2024 DODGE RAM 2500/3500

#### ECO SERIES FRONT WINCH BUMPER

- 1/8" Steel plate; retains factory tow hitch
- Built-in step pockets for easy bed access
- O.E sensor compatible
- Light fitment: 4 cube LEDs



## DODGE RAM STEPS



DG-4200

### 2019-2024 DODGE RAM 1500 CREW CAB

#### AMBUSH SERIES SIDE STAPS

- Sleek fitting main bar sits high and tight to the vehicle body
- 2" Ergonomic style drop step strategically placed at the door
- Steel construction for strength and durability
- Cab length configuration



DG-4201

### 2009-2018 DODGE RAM 1500 CREW CAB

### 2018-2024 DODGE RAM 1500 CREW CAB (CLASSIC BODY STYLE)

### 2010-2024 DODGE RAM 2500/3500/4500/5500 CREW CAB

#### AMBUSH SERIES SIDE STAPS

- Sleek fitting main bar sits high and tight to the vehicle body
- 2" Ergonomic style drop step strategically placed at the door
- Steel construction for strength and durability
- Cab length configuration







## FORD COLLECTION

---

Revolutionize your Ford into an unstoppable force with Body Armor 4x4's arsenal of front and rear bumpers, side steps, and universal Ford products!

From rugged bumpers to sleek side steps, we've curated the ultimate lineup to amplify your Ford's grit and style. Brace yourself for the ride of a lifetime – because with Body Armor 4x4, your Ford is about to become the undisputed champion of the road!



## FORD F-SERIES BUMPERS



FD-20341

### 2017-2022 FORD F250/F350 SUPER DUTY AMBUSH XT NON WINCH BUMPER

- Sleek modern design that contours and follows O.E. body lines
- One-piece wrap around design protects grille and headlights
- 2" main tube and 1.25"-1.50" supporting tubes
- Retains factory camera and ACC
- Mesh screen allows maximum airflow while protecting vital components
- Integrated 2" receiver and shackle recovery mounts
- Light fitment: 30" Dual row LED bar and 4 LED cubes
- 3/16" And 1/4" cold roll steel
- Easy bolt-on installation



FD-20338

### 2011-2016 FORD F250/F350 SUPER DUTY AMBUSH XT NON WINCH BUMPER

- Sleek modern design that contours and follows O.E. body lines
- One-piece wrap-around design protects grille and headlights
- 2" main tube and 1.25"-1.50" supporting tubes
- Integrated 2" receiver and shackle recovery mounts
- Light fitment: 30" dual row LED bar and 4 cube LEDs
- Non-winch compatible
- 3/16" and 1/4" cold roll steel
- Easy bolt-on installation



FD-3166

### 2017-2022 FORD F250/F350 SUPER DUTY AMBUSH SERIES REAR BUMPER

- Sleek modern design that contours and follows O.E. body lines
- Integrated shackle recovery mounts
- Light fitment: 2 cube LEDs
- O.E. sensor compatible
- Accommodates O.E. hitch
- 3/16" and 1/4" cold roll steel
- Easy bolt-on installation







A. Ford Ambush XT Non Winch Bumper FD-20341 B. Cube Lights 30041 C. 30" LED Light Bar 40032 D. Red D-Rings with Black Isolators 3204

## FORD F-SERIES BUMPERS



FD-19342

### 2018-2020 FORD F150

#### AMBUSH SERIES NON WINCH BUMPER

- 3/16" And 1/4" cold roll steel
- Easy bolt-on installation
- O.E. sensor compatible
- Two welded D-ring mounts
- Not winch compatible
- Use FD-4000 for Adaptive Cruise Control
- Light fitment: 30" dual row LED bar & 4 cube LEDs

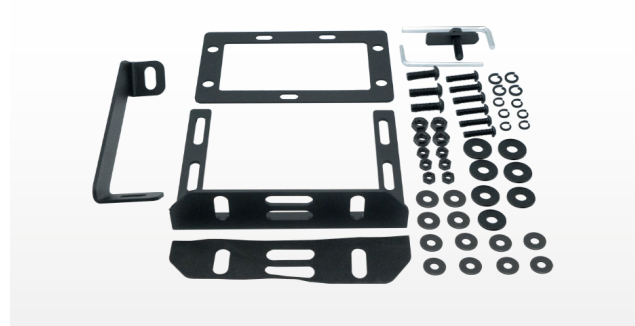


FD-2967

### 2015-2020 FORD F150

#### AMBUSH SERIES REAR BUMPER

- 3/16" and 1/4" cold roll steel
- Easy bolt-on installation
- O.E. sensor compatible
- Two welded D-ring mounts
- Light fitment: 2 cube LEDs



FD-4000

### 2015-2020 FORD F150

#### 2017-2020 FORD F150 RAPTOR

#### 2019-2021 FORD RANGER

#### ACTIVE CRUISE CONTROL BRACKET

- Keeps use of OEM adaptive cruise control
- Engineered to work with Body Armor 4x4 Ambush and Eco Series front bumpers
- Hardware included





## FORD F-SERIES BUMPERS



FD-19336

### 2015-2017 FORD F150

#### ECO SERIES FRONT BUMPER

- 1/8" Thick steel plate
- Add aggressive style without weighing down the vehicle
- Easy bolt-on installation
- Non-winch capable
- Includes license plate bracket
- Light fitments: 20" dual row LED middle & 4 cube LEDs



FD-2962

### 2015-2020 FORD F150

#### ECO SERIES REAR BUMPER

- 1/8" Steel plate
- Retains factory tow hitch
- Built-in step pockets for easy bed access
- O.E. sensor compatible
- Light fitment: 4 cube LEDs



## FORD F-SERIES BUMPERS



FD-19337

### 2009-2014 FORD F-150 ECO SERIES FRONT BUMPER

- 1/8" Thick steel plate
- Add aggressive style without weighing down the vehicle
- Easy bolt-on installation
- Non-winch capable
- Includes license plate bracket
- Light fitments: 20" dual row LED middle & 4 cube LEDs



FD-2963

### 2009-2014 FORD F-150 & RAPTOR ECO SERIES REAR BUMPER

- 1/8" Steel plate
- Retains factory tow hitch
- Built-in step pockets for easy bed access
- O.E. sensor compatible
- Light fitment: 4 cube LEDs



FD-21338

### 2011-2016 FORD F250/F350 SUPER DUTY AMBUSH SERIES NON-WINCH BUMPER

- Sleek modern design that contours and follows O.E. body lines
- Integrated shackle recovery mounts
- Light fitment: 30" dual row LED bar and 4 cube LEDs
- Not winch compatible
- 3/16" and 1/4" cold roll steel
- Easy bolt-on installation



FD-3164

### 1999-2016 FORD F250/F350 SUPER DUTY AMBUSH SERIES REAR BUMPER

- Sleek modern design that contours and follows O.E. body lines
- Integrated shackle recovery mounts
- Light fitment: 2 cube LEDs
- O.E. sensor compatible
- Accommodates O.E. hitch
- 3/16" and 1/4" cold roll steel
- Easy bolt-on installation





## FORD F-SERIES BUMPERS

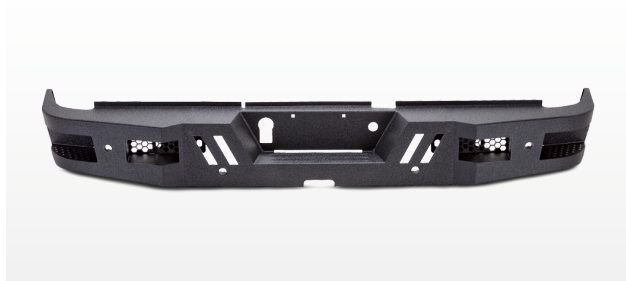


FD-19341

### 2017-2022 FORD F-250/F-350

#### ECO SERIES FRONT WINCH BUMPER

- 1/8" Steel plate with 1/4" winch plate for strength
- 12,000lb winch capacity
- O.E. sensor compatible
- Easy bolt-on installation
- Includes license plate bracket
- Light fitment: 30" dual row LED middle & 4 cube LEDs



FD-2966

### 2017-2022 FORD F-250/F-350

#### ECO SERIES REAR BUMPER

- 1/8" Steel plate
- Retains factory tow hitch
- Built-in step pockets for easy bed access
- O.E. sensor compatible
- Light fitment: 4 cube LEDs

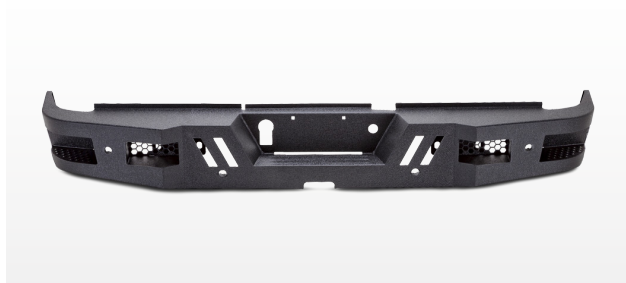


FD-19338

### 2011-2016 FORD F-250/F-350

#### ECO SERIES FRONT WINCH BUMPER

- 1/8" Steel plate with 1/4" winch plate for strength
- 12,000lb winch capacity
- O.E. sensor compatible
- Easy bolt-on installation
- Includes license plate bracket
- Light fitment: 30" dual row LED middle & 4 cube LEDs



FD-2964

### 1999-2016 FORD F-250/F-350

#### ECO SERIES REAR BUMPER

- 1/8" Steel plate
- Retains factory tow hitch
- Built-in step pockets for easy bed access
- O.E. sensor compatible
- Light fitment: 4 cube LEDs



## FORD F-SERIES STEPS



FD-4500

**2015-2024 FORD F-150 CREW CAB, 2017-2024 RAPTOR, 2022-2024 F-150 LIGHTNING, 2017-2024 F-250/F-350 SUPERDUTY CREW CAB**

### E-POWER BOARD STEPS

- Low profile E-Step provides improved ground clearance while protecting the vital rocker panel
- 6" wide full cab length steps automatically deploy and retract when opening and closing vehicle door(s)
- Integrated led lights add visibility while the textured surface provides a secure step area
- Auto safe-stop engages if an obstruction is detected
- Manual override interior switch included
- 600lb weight capacity each side
- Easy no-drill installation
- Powder coated high grade aluminum
- 1 year electrical/2 year mechanical warranty



FD-4200

**2015-2024 FORD F-150 SUPERCREW CAB  
2017-2024 FORD F-250/F-350/F-450/F-550  
SUPERDUTY CREW CAB**

### AMBUSH SERIES SIDE STEPS

- Sleek fitting main bar sits high and tight to the vehicle body
- 2" Ergonomic style drop step strategically placed at the door
- Steel construction for strength and durability
- Cab length configuration



FD-4201

**1999-2016 FORD F-250/F-350/F-450/F-550  
SUPERDUTY CREW CAB**

### AMBUSH SERIES SIDE STEPS

- Sleek fitting main bar sits high and tight to the vehicle body
- 2" Ergonomic style drop step strategically placed at the door
- Steel construction for strength and durability
- Cab length configuration







## SUBARU COLLECTION

---

Get ready to witness the dynamic duo of Body Armor 4x4 and Subaru – a match made in automotive heaven! Our relentless dedication has birthed a collection of top-tier Subaru accessories, meticulously crafted to not only enhance but completely revolutionize the look of your ride. Prepare to stand out from the crowd with a custom aesthetic that sets your Subaru apart from the rest.



## SUBARU BUMPERS



SU-19339

### 2018-2024 SUBARU CROSSTREK HILINE SERIES FRONT WINCH BUMPER

- 3/16" steel plate
- Bolt on bull bar has provisions for 20" double row light bar or individual lights
- Can accommodate up to 5500 lb. winch
- Bolt on skid plate included
- Accommodates O.E. plastic or most aftermarket skid plates
- Integrated shackle recovery points



\*Sport models and all 2021+ models will require custom trimming due to different fascia. Will not fit Hybrid models



SU-19340

### 2019-2024 SUBARU FORESTER HILINE SERIES FRONT WINCH BUMPER

- 3/16" steel plate
- Bolt on bull bar has provisions for 20" double row light bar or individual lights
- Can accommodate up to 5500 lb. winch
- Integrated skid plate
- Accommodates OE plastic or most aftermarket skid plates
- Integrated shackle recovery points



\*2023 models & 2022+ Wilderness models will require different trimming

Professional Support at [BodyArmor4x4.com](http://BodyArmor4x4.com)  
3 Year Finish | Limited Lifetime Warranty  
Two-stage heavy texture black powder coat finish

CALL TOLL FREE US 866.894.3351 | CANADA 877.326.0933



## SUBARU STEPS



SU-4125

### 2018-2024 SUBARU CROSSTREK

#### REVO SLIDERS

- 1.5" tubing
- Designed to provide added protection between your vehicle and obstacles
- Capable of using as a jack point
- Mounting brackets designed to be low profile and less vulnerable to obstacles
- Easy installation some drilling required
- Works with factory height or lift kits (1"-2") including both strut lift and subframe lift



\* Jack points are at the front and rear of the slider/step and can support 25% GVWR



SU-4124

### 2018-2024 SUBARU CROSSTREK

#### REVO STEP SLIDERS

- 1.5" tubing
- Designed to provide added protection between your vehicle and obstacles
- Low-profile integrated step pad
- Capable of using as a jack point
- Mounting brackets designed to be low profile and less vulnerable to obstacles
- Easy installation some drilling required
- Works with lift kits (1"-2") including strut lift and subframe lift



\* Jack points are at the front and rear of the slider/step and can support 25% GVWR





200

A. Subaru Crosstrek Hiline Front Bumper SU-19339 8 B. Subaru Crosstrek Revo Sliders SU-4125 C. Sky Ridge 4.5' Awning 20021 D. Cube Light 30040 E. D-Rings 3203





## SKYRIDGE COLLECTION

---

Ignite your inner adventurer and elevate your camping game with the exhilarating Sky Ridge collection from Body Armor 4x4!

Dive into a world of unparalleled exploration with roof-top tents, annex rooms, awe-inspiring awnings, and beyond. Whatever your camping destination or journey, Sky Ridge is your ticket to an extraordinary outdoor experience.





## SKYRIDGE PIKE 2



20010

### PIKE 2-PERSON TENT

#### SKY RIDGE SERIES

- Tent fabric: 280GSM polycotton ripstop fabric with 2000mm waterproof coating
- Rainfly fabric: 420D polyoxford fabric, with 2500mm waterproof coating
- Door, windows, and skylight constructed with solid polycotton panels along with insect-free breathable mesh screens
- Mattress: 2.4" High-density foam with removable/washable cover
- Ladder: 75" telescoping aluminum ladder
- Hinges and hardware: marine-grade 304 stainless steel
- Floor: aluminum honeycomb with insulation
- Zippers: SBS
- Driving cover: 1200D PVC-coated, fully waterproofed
- 2 Year limited warranty



20015

### PIKE 2 ANNEX ROOM

#### SKY RIDGE SERIES

- Annex walls are made of 420D ripstop polyester oxford fabric, polyurethane coated for 2500mm waterproofing
- Annex floor is made of 550GSM PVC coated waterproof fabric with heavy duty weather resistant zipper
- The annex may be set up with or without the floor installed
- Adds over 42 square feet of downstairs living space to the pike rooftop tent
- Creates a convenient room for changing clothes, removing muddy boots, storing gear, cooking or lounging, or additional sleeping space
- Entry door and two large windows with mosquito netting and solid flaps. a "Back door" provides access to the vehicle's side door or truck bed



 Professional Support at [BodyArmor4x4.com](mailto:BodyArmor4x4.com)

 3 Year Finish | Limited Lifetime Warranty

 Two-stage heavy texture black powder coat finish

CALL TOLL FREE US 866.894.3351 | CANADA 877.326.0933



## SKYRIDGE PIKE 3



20011

### PIKE 3-PERSON TENT

#### SKY RIDGE SERIES

- Rainfly fabric: 420D polyoxford fabric, with 2500mm waterproof coating
- Door, windows, and skylight: solid polycotton panels along with insect-free breathable mesh screens
- Mattress: 2.4" High-density foam with removable/washable cover
- Ladder: 75" telescoping aluminum ladder
- Upper frame: aircraft-grade 6060 aluminum
- Hinges and hardware: marine-grade stainless steel
- Floor: aluminum honeycomb with insulation
- Zippers: SBS
- Driving cover: 1200D PVC-coated, fully weatherproofed



20016

### PIKE 3 ANNEX ROOM

#### SKY RIDGE SERIES

- Annex walls are made of 420D ripstop polyester oxford fabric, polyurethane coated for 2500mm waterproofing
- Annex floor is made of 550GSM PVC coated waterproof fabric with heavy duty weather resistant zipper
- The annex may be setup with or without the floor installed
- Adds over 42 square feet of downstairs living space to the pike rooftop tent
- Creates a convenient room for changing clothes, removing muddy boots, storing gear, cooking or lounging, or additional sleeping space
- Entry door and two large windows with mosquito netting and solid flaps. A "back door" provides access to the vehicle's side door or truck bed





## SKYRIDGE AWNINGS



20020

### 6.5' AWNING

#### SKY RIDGE SERIES

- Easily mounts to virtually any roof rack or bed rack
- Awning is made of 4420D rip stop polyester oxford fabric, polyurethane coated for 2500mm waterproofing
- Provides 43 square feet of covered space for shade, lounging, cooking, etc
- Self-contained unit includes rugged, light-weight extruded aluminum telescopic legs and arms, with twist-lock fixtures
- The heavy-duty travel cover is made of sturdy, UV resistant 680GSM/1200D PVC coated tarpaulin material with
- heavy-duty zippers
- Stakes and tie-down straps are included to secure the awning for use in windy and inclement conditions



20021

### 4.5' AWNING

#### SKY RIDGE SERIES

- Easily mounts to virtually any roof rack or bed rack
- Awning is made of 4420D rip stop polyester oxford fabric, polyurethane coated for 2500mm waterproofing Provides 43 square feet of covered space for shade, lounging, cooking, etc
- Self-contained unit includes rugged, light-weight extruded aluminum telescopic legs and arms, with twist-lock fixtures The heavy-duty travel cover is made of sturdy, UV resistant 680GSM/1200D PVC coated tarpaulin material with heavy-duty zippers
- Stakes and tie-down straps are included to secure the awning for use in windy and inclement conditions





## SKYRIDGE AWNINGS



20025

### 180° XL AWNING W/ MOUNTING BRACKETS

#### SKY RIDGE SERIES

- Easily mounts to virtually any roof rack, bed rack, crossbar, etc.
- Awning is made of 4200 polyester oxford fabric, polyurethane coated for 2500mm waterproofing
- Provides 88 square feet of covered space for shade, lounging, cooking, etc
- Self-contained unit includes rugged, light-weight extruded aluminum with alloy hinges
- Telescopic legs with twist-lock fixtures, minimum 55" maximum 102" height
- Heavy-duty travel cover is made of sturdy, UV resistant 1000G PVC coated tarpaulin material with heavy-duty zippers
- 1-person setup and teardown
- Includes 3 robust powder coated brackets, 2 tie-down straps, 8 guy-ropes, 8 stakes and mounting hardware



Driver-Side 20026 | Passenger-Side 20027

### 270° XL AWNING W/MOUNTING BRACKETS

#### SKY RIDGE SERIES

- Easily mounts to virtually any roof rack, bed rack, crossbar, etc.
- Awning is made of 280GSM poly cotton rip-stop fabric, polyurethane coated for 2500mm waterproofing
- Provides 129 square feet of covered space for shade, lounging, cooking, etc
- Self-contained unit includes rugged, light-weight extruded aluminum with alloy hinges
- Telescopic legs with twist-lock fixtures, minimum 55" maximum 102" height
- Heavy-duty travel cover is made of sturdy, UV resistant 1000G PVC coated tarpaulin material with heavy duty zippers
- 1-person setup and teardown
- Optional wall kit available
- Includes 3 robust powder coated brackets, 2 tie-down straps, 8 guy-ropes, 8 stakes and mounting hardware

Professional Support at [BodyArmor4x4.com](mailto:BodyArmor4x4.com)

3 Year Finish | Limited Lifetime Warranty



Two-stage heavy texture black powder coat finish



## SKYRIDGE AWNINGS



Driver-Side 20023 | Passenger-Side 20024

### 270° AWNING W/ MOUNTING BRACKETS

#### SKY RIDGE SERIES

- Easily mounts to virtually any roof rack or bed rack
- Awning is made of 280GSM poly cotton rip-stop fabric, polyurethane coated for 2500mm waterproofing
- Provides 80 square feet of covered space for shade, lounging, cooking, etc
- Self-contained unit includes rugged, light-weight extruded aluminum with alloy hinges
- Telescopic legs with twist-lock fixtures, minimum 55" and maximum 102" height
- Heavy duty travel cover is made of sturdy, UV resistant 1000G PVC-coated tarpaulin material with heavy-duty zippers
- 1-Person setup and teardown
- Optional wall kit available
- Includes 2 robust powdercoated brackets, 1 tie-down strap, 8 guy-ropes, 8 stakes, and mounting hardware





## SKYRIDGE AWNINGS



11002

### 270° AWNING WALL KIT 1 (1 DOOR/1 WALL)

#### SKY RIDGE SERIES

- Provides you protection from the wind, rain, sun, and extreme weather conditions
- Durable 280GSM polycotton
- Includes 1 panel with a built-in zippered screen and weather door and 1 solid panel
- Walls are interchangeable allowing you multiple configurations
- Each panel can be extended for additional shade
- Zips easily into the awning to create an extended shelter
- Each panel and door can be extended for additional shade
- Will not work with XL awnings



11003

### 270° AWNING WALL KIT 2 (2 WALLS)

#### SKY RIDGE SERIES

- Provides you protection from the wind, rain, sun, and extreme weather condition
- Durable 280GSM polycotton
- Includes 2 solid panels
- Walls are interchangeable allowing you multiple configurations
- Zips easily into the awning to create an extended shelter
- Each panel and door can be extended for additional shade
- Will not work with XL awnings



## SKYRIDGE ACCESSORIES



20009

### DIMMABLE SWITCHBACK LED LIGHT STRIP SKY RIDGE SERIES

- Versatile 47" led dimmable light
- Switchback led toggles between white and amber • 10' usb plug in cord
- Slides into most tongue and groove
- Adjustable velcro strips



5169

### CAMP LAMP SKY RIDGE SERIES

- Shatter-resistant nylon and polycarbonate
- Four light modes: 250lm, 500lm, 60lm, and red S.O.S.
- Includes 3AA batteries
- Mounting solutions are magnetic base and top clip
- Height is 7"





## SKYRIDGE SPECIFICATIONS

### TENTS

SPECS	PIKE 2-PERSON TENT	PIKE 3-PERSON TENT
PART NUMBER	20010	20011
SLEEPS	2 to 3	3 to 4
OPEN DIMENSIONS	48" x 110" x 50"	75" x 122" x 51"
SLEEPING AREA	55" x 92.5"	74" x 94.5"
CLOSED DIMENSIONS	48" x 43" x 12"	75" x 47" x 14"
WEIGHT	108lbs	172lbs
TENT WEIGHT CAPACITY	660lbs	770lbs
LADDER WEIGHT CAPACITY	330lbs	330lbs
LADDER MAX LENGTH	7'5"	7'5"
MATTRESS	2.4" High-Density Foam with removeable/washable cover	2.4" High-Density Foam with removeable/washable cover
TENT FABRIC	280GSM Polycotton ripstop fabric with 2000mm waterproof coating	280GSM Polycotton ripstop fabric with 2000mm waterproof coating
RAINFLY FABRIC	420D Polyoxford ripstop fabric with 2500mm waterproof coating	420D Polyoxford ripstop fabric with 2500mm waterproof coating
TENT FLOOR	Outer: aluminum with anti-scratch coating Inner: honeycomb with insulation	Outer: aluminum with anti-scratch coating Inner: honeycomb with insulation
UPPER FRAME	Aircraft-grade 6061 aluminum	Aircraft-grade 6061 aluminum
HINGES & HARDWARE	Marine-grade 304 stainless steel	Marine-grade 304 stainless steel
TRAVEL COVER	1200D PVC coated tarpaulin, fully waterproof	1200D PVC coated tarpaulin, fully waterproof
HINGES & HARDWARE	304 Stainless Steel	304 Stainless Steel
ZIPPERS	SBS	SBS
WARRANTY	2 year limited	2 year limited

### ANNEXES

SPECS	PIKE 2 ANNEX ROOM	PIKE 3 ANNEX ROOM
PART NUMBER	20015	20016
OPEN DIMENSIONS	84" x 74" x 75"	96" x 96" x 75"
WEIGHT	13lbs	17lbs
ANNEX FABRIC	420D Polyoxford ripstop fabric with 2500mm waterproof coating	420D Polyoxford ripstop fabric with 2500mm waterproof coating
ANNEX FLOOR	550GSM PVC, removeable	550GSM PVC, removeable
SQUARE FOOTAGE	42' feet of usable area	52' feet of usable area
WINDOWS & DOORS	Front entry way + 2 large windows + 1 rear door for vehicle access	Front entry way + 2 large windows + 1 rear door for vehicle access
ZIPPERS	SBS	SBS
WARRANTY	2 year limited	2 year limited

## SKYRIDGE SPECIFICATIONS

### AWNINGS

SPECS		SKY RIDGE 4.5'		SKY RIDGE 6.5'			
PART NUMBER		20021		20020			
OPEN DIMENSIONS		54" x 76"		79" x 79"			
CLOSED DIMENSIONS		54" x 4" x 4"		79" x 4" x 4"			
WEIGHT		21lbs		27lbs			
COVERAGE		28' feet		43' feet			
AWNING FABRIC		280G Polycotton with 2500mm waterproof coating		280G Polycotton with 2500mm waterproof coating			
BACKING PLATE & POLES		Aluminum with self-contained telescoping, twist lock poles		Aluminum with self-contained telescoping, twist lock poles			
HARDWARE		Marine-grade 304 stainless steel		Marine-grade 304 stainless steel			
TRAVEL COVER		1000D PVC coated tarpaulin		1000D PVC coated tarpaulin			
ZIPPERS		SBS		SBS			
WARRANTY		2 year limited		2 year limited			
SPECS		SKY RIDGE 180°XL		SKY RIDGE 270°		SKY RIDGE 270°XL	
PART NUMBER		20025	20023 (Driver Side) 20024 (Passenger Side)		20026 (Driver Side) 20027 (Passenger Side)		
OPEN DIMENSIONS		240" x 79"	169" x 74"		240" x 157"		
CLOSED DIMENSIONS		88" x 7" x 7"	88" x 7" x 7"		88" x 7" x 7"		
WEIGHT		46lbs	53lbs		62lbs		
COVERAGE		88' feet	80' feet		129' feet		
AWNING FABRIC		280G Polycotton with 2500mm waterproof coating	280G Polycotton with 2500mm waterproof coating		280G Polycotton with 2500mm waterproof coating		
BACKING PLATE & POLES		Aluminum with self-contained telescoping, twist lock poles	Aluminum with self-contained telescoping, twist lock poles		Aluminum with self-contained telescoping, twist lock poles		
HARDWARE		Marine-grade 304 stainless steel	Marine-grade 304 stainless steel		Marine-grade 304 stainless steel		
TRAVEL COVER		1000D PVC coated tarpaulin	1000D PVC coated tarpaulin		1000D PVC coated tarpaulin		
ZIPPERS		SBS	SBS		SBS		
WARRANTY		2 year limited	2 year limited		2 year limited		
SPECS		SKY RIDGE 270° WALL KIT 1			SKY RIDGE 270° WALL KIT 2		
PART NUMBER		11002			11003		
OPEN DIMENSIONS		Door Opening: 87" x 54", Wall Panels: 134" x 88" x 93"			Wall Panels: 134" x 88" x 93" *No Door Opening		
CLOSED DIMENSIONS		——			——		
WEIGHT		13lbs			13lbs		
COVERAGE		——			——		
AWNING FABRIC		280G Polycotton with 2500mm waterproof coating			280G Polycotton with 2500mm waterproof coating		
BACKING PLATE & POLES		——			——		
HARDWARE		——			——		
TRAVEL COVER		Nylon storage bag with cinch lock included			Nylon storage bag with cinch lock included		
ZIPPERS		SBS			SBS		
WARRANTY		2 year limited			2 year limited		



## UNIVERSAL OVERLAND RACK



TK-6125

### UNIVERSAL OVERLAND RACK

#### FULL-SIZE

- Universal bed fitment
- Overall rack: 60.5" x 158"
- Fits beds with an inside rail measurement of 59.6" - 66" and bed lengths 5.5" and longer
- Multiple bed mount options: No-drill rail clamps, mounting plate and optional utility track mount kit PN: TK-6128
- Includes two accessory mounts, additional mounts available PN: TK-6127
- Tent mounts fit Sky Ridge Series RTT and most universal RTT
- Not designed to work with tonneau covers
- Full size rack is designed for the F-150, Silverado 1500, RAM 1500, Toyota Tundra and more



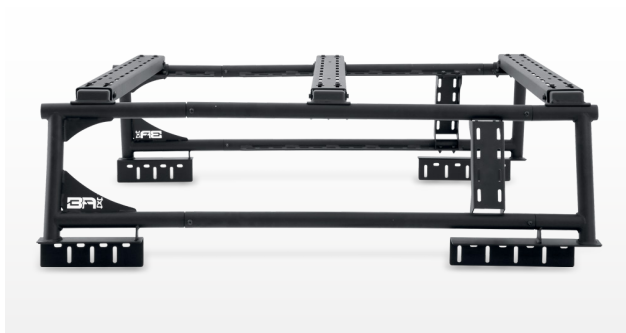
TK-6125-CRSBAR

### OVERLAND RACK CROSS BARS

#### FULL-SIZE

- Multiple slotted holes provides adjustability throughout the rack
- Perfect for those that need extra support for heavier loads or additional accessories
- Works in conjunction with our universal overland rack





TK-6126

## UNIVERSAL OVERLAND RACK

### MID-SIZE

- Universal bed fitment
- Overall rack: 54" x 158"
- Fits beds with an inside rail measurement of 52.5" - 58.5" and bed lengths 5.5" and longer
- Multiple bed mount options: No-drill rail clamps, mounting plate and optional utility track mount kit PN: TK-6128
- Includes two accessory mounts, additional mounts available PN: TK-6127
- Tent mounts fit Sky Ridge Series RTT and most universal RTT
- Two stage light texture black powdercoat finish
- Not designed to work with tonneau covers
- Mid size rack is designed for vehicles like Toyota Tacoma, Ford Ranger, Jeep Gladiator, and more



TK-6127

## ACCESSORY MOUNT

### UNIVERSAL OVERLAND RACK

- Universal overland rack accessory mount fits tk-6125 and tk-6126 racks
- Allows multiple cargo configurations
- Sold in singles

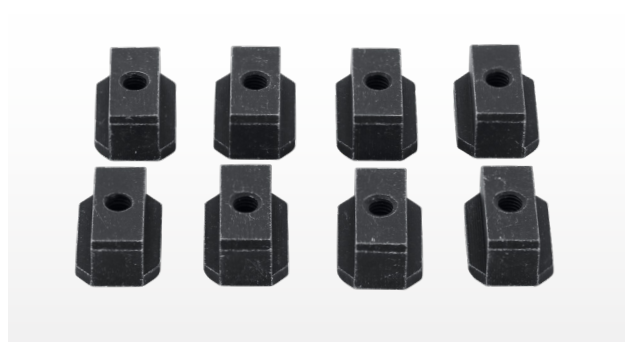


TK-6126-CRSBAR

## OVERLAND RACK CROSS BARS

### MID-SIZE

- Multiple slotted holes provides adjustability throughout the rack
- Perfect for those that need extra support for heavier loads or additional accessories
- Works in conjunction with our universal overland rack



TK-6128

## UTILITY RACK MOUNTING KIT

### UNIVERSAL OVERLAND RACK

- Utility clamp set for OE Tacoma and Gladiator JT rails
- No drill installation
- OE utility rails required





## LEVELING KITS





## LEVELING KITS



### COIL SPACER

- Bolt-on installation
- Stock ride quality
- Quickly return to stock
- Fits larger wheels and tires
- Durable powdercoat finish
- Armor guard warranty
- Shock extenders included where applicable



### STRUT SPACER

- Bolt-on installation
- Stock ride quality
- Quickly return to stock
- Fabricated from 1/4" steel and uses grade 10 hardware
- Fits larger wheels and tires



### TORSION KEY

- Bolt on installation
- Additional ground clearance
- Quickly return to stock
- 4140 Forged steel: stock ride quality





## SPECIFICATIONS

### DODGE/RAM

YEAR	MODEL	DRIVE	LIFT	SKU	POSITION	TIRE SIZE	PRODUCT TYPE
02-05	RAM 1500	4WD	1-3"	506010-DG	FRONT	35"	KEY
06-12 & 19-24	RAM 1500 06-12 4WD ONLY 19-20 4WD/2WD MODELS & 19-23 (EXCEPT REBEL AND AIR SUSPENSION MODELS)	4WD/2WD	2.5"	505072-DG	FRONT	35"	STRUT SPACERS
13-18	RAM 1500 (EXCEPT REBEL & AIR SUSPENSION MODELS)	4WD	2.5"	50307-DG	FRONT	35"	STRUT + COIL SPACERS
02-18	RAM 1500	2WD	2"	50205-DG	FRONT	33"	COIL SPRING
94-12	RAM 2500/3500	4WD	2.5"	50107-DG	FRONT	35"	COIL SPACERS
14-24	RAM 2500	2WD/4WD	2.0"	50208-DG	FRONT	35"	COIL SPACERS + SHOCK EXTENDERS
13-23	RAM 3500	2WD/4WD	2.0"	50208-DG	FRONT	35"	COIL SPACERS + SHOCK EXTENDERS

### FORD

YEAR	MODEL	DRIVE	LIFT	SKU	POSITION	TIRE SIZE	PRODUCT TYPE
04-24	F-150	2WD/4WD	2.0"	50508-FD	FRONT	32"	STRUT SPACERS
09-24	F-150	2WD/4WD	2.5"	50507-FD	FRONT	33"	STRUT SPACERS
09-24	F-150	2WD/4WD	3.0"	50506-FD	FRONT	33"	STRUT SPACERS
04-08	F-150	2WD/4WD	2.5"	50507-FD	FRONT	33"	STRUT SPACERS
04-08	F-150	2WD/4WD	3.0"	50506-FD	FRONT	35"	STRUT SPACERS
05-24	F-250 / F-350 (EXCLUDES TREMOR MODELS)	4WD	2.0"	50209-FD	FRONT	35"	COIL SPACERS
05-24	F-250 / F-350 (EXCLUDES TREMOR MODELS)	4WD	2.5"	50207-FD	FRONT	35"	COIL SPACERS / SHOCK EXTENDERS

### GMC

YEAR	MODEL	DRIVE	LIFT	SKU	POSITION	TIRE SIZE	PRODUCT TYPE
15-22	CANYON	2WD/4WD	2.5"	50307-GM	FRONT	31"	STRUT + COIL SPACERS
07-24	SIERRA 1500 / YUKON / YUKON XL (EXCEPT DENALI AT4 OR MAGNARIDE SUSPENSION)	2WD/4WD	2"	50209-GM	FRONT	32"	STRUT SPACERS
07-24	SIERRA 1500 / YUKON / YUKON XL (EXCEPT DENALI AT4 OR MAGNARIDE SUSPENSION)	2WD/4WD	2"	50508-GM	FRONT	32"	STRUT SPACERS
07-24	SIERRA 1500 / YUKON / YUKON XL (EXCEPT DENALI AT4 OR MAGNARIDE SUSPENSION)	2WD	3"	50506-GM	FRONT	33"	STRUT SPACERS
14-18	SIERRA 1500	2WD/4WD	1"	50502-GM	REAR		BLOCK & U-BOLT
07-13 & 19-24	SIERRA 1500	2WD/4WD	1"	50502-GM	REAR		BLOCK & U-BOLT
20-24	2500HD / 3500HD (8 LUG)	4WD	1.5-2"	504014-GM	FRONT	35"	KEY & SHOCK EXTENDERS
11-19	1500HD / 2500HD / 3500HD (8 LUG)	2WD/4WD	1.3"	50401-GM	FRONT	33"	KEY & SHOCK EXTENDERS
99-06	K1500 / YUKON (00-06 2WD/4WD)	4WD	1.3"	504011-GM	FRONT	33"	KEY & SHOCK EXTENDERS
01-10	1500HD / 2500HD / 3500HD (8 LUG)	2WD/4WD	1.3"	504012-GM	FRONT	33"	KEY & SHOCK EXTENDERS

## CHEVROLET SPECIFICATIONS

YEAR	MODEL	DRIVE	LIFT	SKU	POSITION	TIRE SIZE	PRODUCT TYPE
15-22	COLORADO	2WD/4WD	2.5"	50307-GM	FRONT	31"	STRUT + COIL SPACERS
07-24	SILVERADO 1500 / AVALANCHE / TAHOE / SUBURBAN (EXCEPT TRAILBOSS MODELS OR MAGNARIDE SUSPENSION)	2WD/4WD	2"	50209-GM	FRONT	32"	STRUT SPACERS
07-24	SILVERADO 1500 / AVALANCHE / TAHOE / SUBURBAN (EXCEPT TRAILBOSS MODELS OR MAGNARIDE SUSPENSION)	2WD/4WD	2"	50508-GM	FRONT	32"	STRUT SPACERS
07-24	SILVERADO 1500 / AVALANCHE / TAHOE / SUBURBAN (EXCEPT TRAILBOSS MODELS OR MAGNARIDE SUSPENSION)	2WD	3"	50506-GM	FRONT	33"	STRUT SPACERS
14-18	SILVERADO 1500	2WD	1"	50502-GM	REAR		BLOCK & U-BOLT
07-13 & 19-24	SILVERADO 1500	2WD	1"	50501-GM	REAR		BLOCK & U-BOLT
20-24	2500HD / 3500HD (8 LUG)	4WD	1.5-2"	504014-GM	FRONT	35"	KEY & SHOCK EXTENDERS
11-19	1500HD / 2500HD / 3500HD (8 LUG)	2WD/4WD	1-3"	50401-GM	FRONT	33"	KEY & SHOCK EXTENDERS
99-06	SILVERADO / TAHOE / SUBURBAN (NEW BODY STYLE)	4WD	1-3"	504011-GM	FRONT	33"	KEY & SHOCK EXTENDERS
01-10	1500HD / 2500HD / 3500HD (8 LUG)	2WD/4WD	1-3"	504012-GM	FRONT	33"	KEY & SHOCK EXTENDERS

## JEEP

YEAR	MODEL	DRIVE	LIFT	SKU	POSITION	TIRE SIZE	PRODUCT TYPE
06-10	COMMANDER	2WD/4WD	2.5"	50107-JP	FRONT	31"	STRUT SPACERS
05-10	GRAND CHEROKEE	2WD/4WD	2.5"	50107-JP	FRONT	31"	STRUT SPACERS
07-18	WRANGLER JK	2WD/4WD	2.5"	50107-JK	FRONT	35"	COIL SPACERS
07-18	WRANGLER JK	2WD/4WD	2"	50108-JK	REAR		COIL SPACERS
07-18	WRANGLER JK	2WD/4WD	2" S F / 2" R	50110-JK	FRONT/REAR	35"	COIL SPACERS
18-24	WRANGLER JL	4WD	2" S F / 2" R	50110-JL	FRONT/REAR	35"	COIL SPACERS

## NISSAN

YEAR	MODEL	DRIVE	LIFT	SKU	POSITION	TIRE SIZE	PRODUCT TYPE
04-21	TITAN (EXCEPT PRO 4X OR XD MODELS)	2WD/4WD	2.5"	505072-NN	FRONT	33"	STRUT SPACERS
05-24	FRONTIER / XTERRA	2WD/4WD	2.5"	50507-NN	FRONT	32"	STRUT SPACERS

## SUBARU

YEAR	MODEL	DRIVE	LIFT	SKU	POSITION	TIRE SIZE	PRODUCT TYPE
19-24	SUBARU FORESTER	AWD	2" F / 1.5" R	50306-SU	FRONT/REAR	225/75R17	STRUT SPACERS
05-19	SUBARU OUTBACK	AWD	2" F / 1.5" R	50307-SU	FRONT/REAR	235/65R17	STRUT SPACERS
18-24	SUBARU CROSSTREK	AWD	2" F / 1.5" R	50308-SU	FRONT/REAR	215/75R15	STRUT SPACERS

## TOYOTA

YEAR	MODEL	DRIVE	LIFT	SKU	POSITION	TIRE SIZE	PRODUCT TYPE
05-23	TACOMA	2WD/4WD	2.5"	505073-TC	FRONT	32"	STRUT SPACERS
03-24	4 RUNNER	2WD/4WD	2.5"	50507-T	FRONT	32"	STRUT SPACERS
07-21	TUNDRA	2WD/4WD	2.5"	505073-TN	FRONT	33"	STRUT SPACERS
07-14	FL CRUISER	2WD/4WD	2.5"	50507-T	FRONT	32"	STRUT SPACERS

\*\* Max Tire Size could require minor trimming or removal of factory mudguards based on rim choice. Most fitments base on 11.50 inch wide tire and 9 inch wide wheel with positive offset.



## ACCESSORIES



90001

### UNIVERSAL MOLLE BAG KIT

- Convenient and flexible storage solution
- 5-Piece kit with various sizes to store day-to-day or trail necessities
- Designed to work with most Molle/PAL systems
- Can be used for other universal applications
- Constructed of 600D and moisture resistant liner



3216 Large | 3127 XL

### TRAIL GLOVES

- Neoprene, PVC, and nylon mixture
- Touchscreen compatibility on index
- Finger and thumb machine washable
- Double stitched padding with dual layer fingertip reinforcement
- Anti-slip palm patch



DUAL LAYER FINGERTIP  
AND KNUCKLE  
REINFORCEMENT



TOUCHSCREEN READY  
ON INDEX FINGER AND  
THUMB



DUAL-STITCHED  
ANTI-SLIP PALM  
PATCH

Professional Support at [BodyArmor4x4.com](http://BodyArmor4x4.com)

3 Year Finish | Limited Lifetime Warranty

Two-stage light texture black powder coat finish

## ACCESSORIES



3203

### BLACK D-RING WITH RED ISOLATORS

- 3/4" D-ring shackle with isolators
- 4.75 ton pull rating
- Threaded shaft for easy installation
- Isolators are removable and prevent rattle
- Durable texture black powdercoat finish with red isolators



3204

### RED D-RING WITH BLACK ISOLATORS

- 3/4" D-ring shackle with isolators
- 4.75 ton pull rating
- Threaded shaft for easy installation
- Isolators are removable and prevent rattle
- Durable texture red powdercoat finish with black isolators



5141-B

### MEGA D-RING

- 6061-T6 billet aluminum with 7/8" stainless pin
- Reversible design offers smooth finish or Decorative bolts
- 18,000lbs capacity
- Durable light texture finish



5141-M

### MEGA D-RING

- 6061-T6 billet aluminum with 7/8" stainless pin
- Reversible design offers smooth finish or Decorative bolts
- 18,000lbs capacity





## ACCESSORIES



5136

### BACKBONE HITCH SKID

- Easy to install, no tools required
- Protect your hitch, trailer wiring and rear bumper
- Adds a secure non-slip step to your vehicle
- Provides a reliable recovery point
- Black E-coat finish



WHEEL CHOCK



RECOVERY POINT



SKID PLATE



STEP



5142

### 2"-3" ROLL BAR GRAB HANDLE

- Nylon webbing and industrial-grade velcro
- Built for 2-3 inch roll bars
- Ant-slip handle grips
- Sold in pairs



5169

### CAMP LAMP

#### SKY RIDGE SERIES

- Shatter-resistant nylon and polycarbonate
- Four light modes: 250lm, 500lm, 60lm, and red S.O.S.
- Includes 3AA batteries
- Mounting solutions are magnetic base and top clip
- Height is 7"



5168

### C.O.R.E. LED ROADFLARE

- LED 9 function emergency roadside flare
- Waterproof and crush resistant
- Magnetic back and a hook for multiple mounting options
- Powered by aaa batteries (included)
- Visible up to 1 mile



## LED LIGHTING & ACCESSORIES



30042

### CUBE LIGHT - LIGHT SPOT

- Spot beam
- Durable die-cast aluminum housing
- Combined 40 watts and 5000 raw lumens
- IP67 waterproof rating
- Includes a pair of lights and a wiring harness with an illuminated switch



30043

### CUBE LED - LIGHT FLOOD

- Flood beam
- Durable die-cast aluminum housing
- Combined 40 watts and 5000 raw lumens
- IP67 waterproof rating
- Includes a pair of lights and a wiring harness with an illuminated switch





## LED LIGHTING & ACCESSORIES



40022

### 20" LED LIGHT BAR

- Double row combo-flood/spot beam
- Black background
- Durable die-cast aluminum housing
- Combined 120 watts and 8400 raw lumens
- IP67 waterproof rating
- Includes a wiring harness with an illuminated switch



40032

### 30" LED LIGHT BAR

- Combo-flood/spot beam
- Black background
- Combined 120 watts and 12,400 raw lumens
- IP67 waterproof rating
- Includes a wiring harness with an illuminated switch



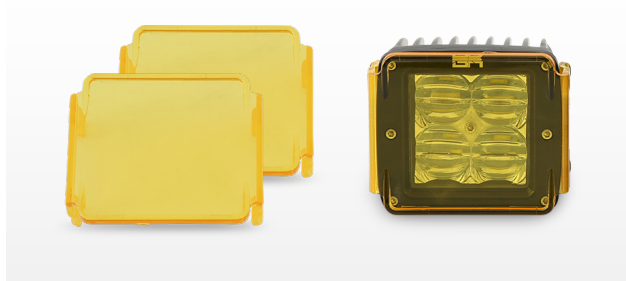
50020

### 18" SINGLE BLACKOUT LED LIGHT BAR

- Single row combo- flood/spot beam
- Cree 5w - 90w - 4050 lumens
- Black panel background
- IP67 waterproof rating
- Durable aluminum housing
- Includes mounting brackets, wiring harness and switch
- 2 year limited



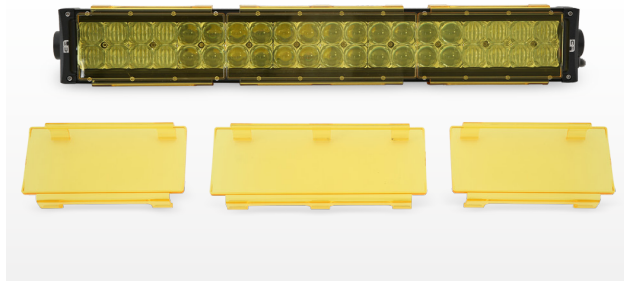
## LED LIGHTING & ACCESSORIES



60040

### CUBE LIGHT AMBER COVER

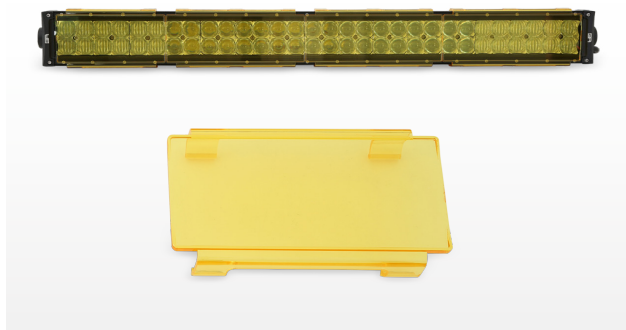
- Polycarbonate lens
- Easy snap-on installation
- Designed for BA 4x4 led lights
- Improved visibility in dust, fog, or rain
- Sold in pairs



60042

### 20" LIGHT BAR AMBER COVERS

- Polycarbonate lens
- Easy snap-on installation
- Designed for BA 4x4 led lights
- Improved visibility in dust, fog, or rain
- Multiple pieces included



60043

### 30" LIGHT BAR AMBER COVERS

- Polycarbonate lens
- Easy snap-on installation
- Designed for BA 4x4 led lights
- Improved visibility in dust, fog, or rain
- Multiple pieces included



60045

### 50" LIGHT BAR AMBER COVERS

- Polycarbonate lens
- Easy snap-on installation
- Designed for BA 4x4 led lights
- Improved visibility in dust, fog, or rain
- Multiple pieces included





## BODY ARMOR 4X4 LIMITED LIFETIME WARRANTY

Body Armor 4x4 (BA) warrants to the original purchaser that these products will be free from defects in material and workmanship prior to shipping and/or installation for the life of the product. This non-transferable limited lifetime warranty does not cover damage or impairment in any part due to misuse, improper installation, accident or contact with on-road or off-road hazards, product modification, improper or inadequate cleaning and/or maintenance. All other warranties and representations express or implied are hereby disclaimed, including fitness for merchantability and buyer's intended use or purpose.

BA products are built and sold for highway and off-road use. The original purchaser assumes all risks as to the selection, suitability and performance of all goods and products purchased. BA's sole and exclusive obligation under this warranty shall be to repair or replace the item(s) and their discretion and BA will not issue any credit or refund to the consumer. Proof of purchase is required on all warranty claims. BA may require pictures to diagnose the warranty claim and may require the product(s) be returned if determined by BA to be necessary. If a return is required then a RGA number will be issued by BA. Any item arriving to BA without a valid RGA number will be refused and sent back. Upon evaluating the RGA and no valid warranty claim is made, the RGA will be returned to the consumer at their expense or disposed by BA after 60 days. BA will not be responsible for incidental charges such as removal, installation, shipping costs or lost during transit. Any items that are ordered in error, refused or cancelled are not considered a valid warranty claim and cannot be returned to BA.

### FINISH WARRANTY

The finish is warranted to be free of defects for a period of 3 years from date of purchase. Product(s) that have been abused, altered, incorrectly installed or used in competition are void of said warranty. Surface rust, pitting or discoloration is a direct result of improper maintenance is not covered by this warranty. It is the responsibility of the owner to preserve and maintain the finish of their product(s). In areas where high concentrations of road salts and other corrosive agents are used, rust or damage to the finish may occur if BA product(s) are not properly maintained. Lack of proper maintenance in these areas may void the finish warranty. See below for routine maintenance tips and recommendations.

### PRODUCT CARE AND MAINTENANCE

- Textured coat finished should be cleaned ONLY with a mild soap on a damp sponge.
- BA recommends wiping down the product with a light coat of lubricate (i.e. WD40) periodically to maintain its luster.
- DO NOT apply polish or wax that requires buffing for removal as this may damage the finish.
- DO NOT coat the product with any type of shine such as Tire Shine or glossy aerosol or gel. This can cause discoloration, staining or bubbling.



## BODY ARMOR 4X4 SKY RIDGE SERIES LIMITED WARRANTY

Body Armor 4x4 (BA) warrants to the original purchaser that its Sky Ridge Series products are free from defects in workmanship and materials under normal and intended use for 2 years. This warranty extends only to Sky Ridge Tents, Sky Ridge Annex Rooms and Sky Ridge Awnings. All other Body Armor 4x4 products are subject to Body Armor 4x4's limited lifetime warranty.

Body Armor 4x4 shall not be responsible for the common materials that wear inevitably with extended use (e.g., Ultra Violet (UV) light damage on tents, exhausted zippers, aesthetic surface oxidization), or defects caused by accident, abuse, alteration, storm damage, extreme or abnormal weather conditions, mold and mildew, misuse or improper care.

THERE ARE NO OTHER EXPRESS WARRANTIES BEYOND THE TERMS OF THIS LIMITED WARRANTY. IN NO EVENT SHALL BODY ARMOR 4X4 BE LIABLE FOR INCIDENTAL OR CONSEQUENTIAL DAMAGES.

To assure product quality, Body Armor 4x4 reserves the right to change product design, material, specification and finishes without prior notice to customers. This limited warranty gives you specific legal rights and you may also have other rights, which may vary from state to state. Some states do not allow limitations on how long an implied warranty lasts, so the above limitations may not apply to you. Also, some states do not allow the exclusion or limitation of incidental or consequential damages, so the above limitations or exclusions may not apply to you.

Body Armor 4x4 reserves the right to discontinue product lines and substitute products or provide other remedies than those listed in this limited warranty for those discontinued products.

If after inspection we find that a product failed due to a manufacturing or material defect, we will repair or replace the product, at our option, without charge.

### PRODUCT CARE AND MAINTENANCE

- Proper storage will extend the life of your tent, annex or awning. Be sure it is fully dry prior to storage and keep in a cool, dry location free from sunlight.
- Dry your products thoroughly before closing them. We recommend you air dry it in between adventures to prevent mildew and mold growth. These can lead to discoloration, foul odor and your tent material to degrade. Mold and mildew are not covered under warranty.
- Periodically lubricate zipper teeth with non-scented bees wax. Make sure to keep them free from dust and dirt. This will prolong the life of your zippers.
- Ladder should be wiped free of any dust or dirt prior to collapse. Periodically spray the side rails with any silicone spray. Do not spray the ladder tread which can lead to slipping.
- To clean your mattress cover, remove cover and machine wash using gentle cycle with delicate washing detergent.
- Hang dry only! DO NOT tumble dry.
- To clean your fabric, use a mild detergent and warm water gently applied with a sponge. Rinse with a clean wet sponge and allow to completely air dry before storing.
- Avoid excess sun exposure to prolong the life of your product. UV rays can degrade fabrics and water proof
- Coatings. If your product begins to break down, we suggest washing the fabric with a mild detergent and water solution followed by a treatment of a water repellent designed for tents. Consult your local outdoor retailer for other tent fabric care products and use as directed.





EXPLORE MORE AT  
[BODYARMOR4X4.COM](http://BODYARMOR4X4.COM)



CALL TOLL-FREE  
USA (866) 894-3351  
CANADA (877) 326-0933

