

2005-2011 TOYOTA TACOMA FRONT WINCH BUMPER

Part # TC-19335



Hardware list:

- QTY 8 M12X1.75X40mm(Preinstalled on bumper)
- QTY 8 M12 Washer(Preinstalled on bumper)
- QTY 2 Fog Light Brackets

Removing Factory bumper:

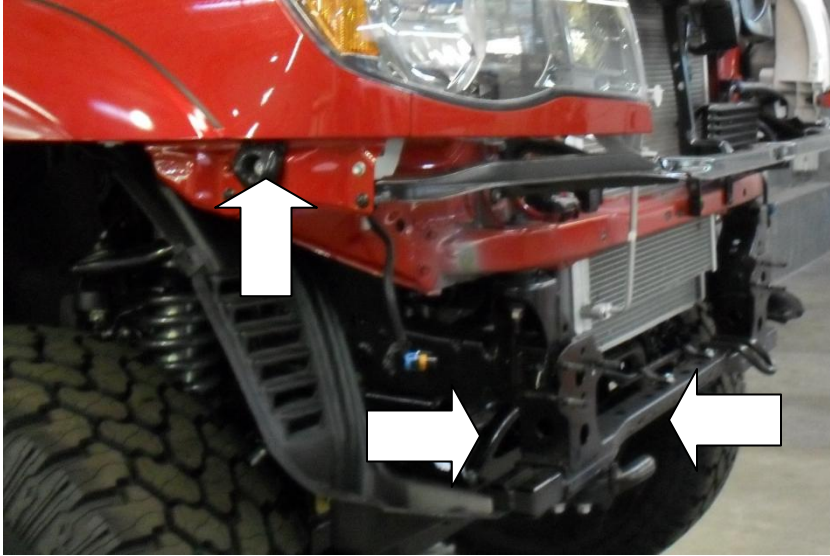
- 1 Remove factory grill from truck by removing two screws from top.



- 2 Remove all fasteners from wheel well top of bumper fascia, and from bottom of bumper fascia. If equipped with driving lights disconnect wiring harness at this time.
- 3 Remove front bumper fascia. If installing factory driving lights I new front bumper, remove at this time.



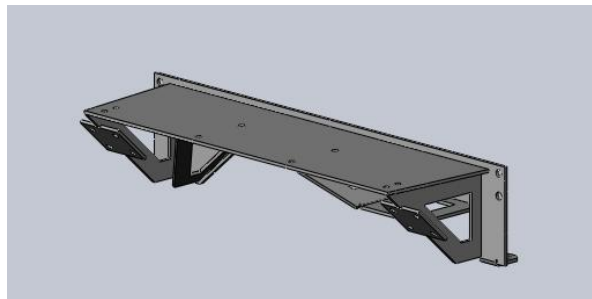
- 4 Remove aluminum front bumper structure and retain factory hard ware.
- 5 Remove two fascia supports, one on each side of vehicle.
- 6 Remove end pieces from crash bar and factory tow hook.



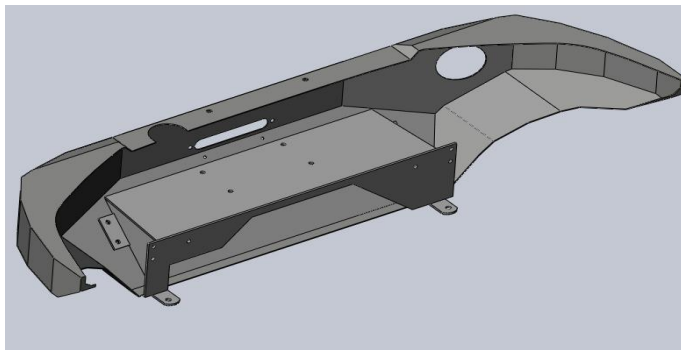
Bumper Installation for TC-19335:

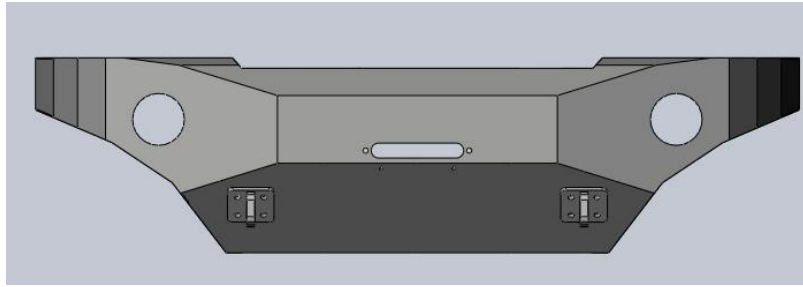
We recommend you have help with lifting of the rear bumper to avoid injury or damage to bumper and vehicle.

- 1 Install winch plate using factory hardware used for aluminum bumper. (If installing a winch install at this time.)



- 2 Install Front bumper and d-ring to winch plate using M 12 hardware. Leave loose at this time.





- 3 Check alignment to body and tighten all hardware.
- 4 Mount auxiliary lights at this time. If reusing factory lights use supplied bracket to mount lights to light tabs.
- 5 Cut inner plastic fender as needed to clear front tires.

Note: Recheck all hardware after the first couple hundred miles. It is advised to inspect the bumper and hardware periodically.

