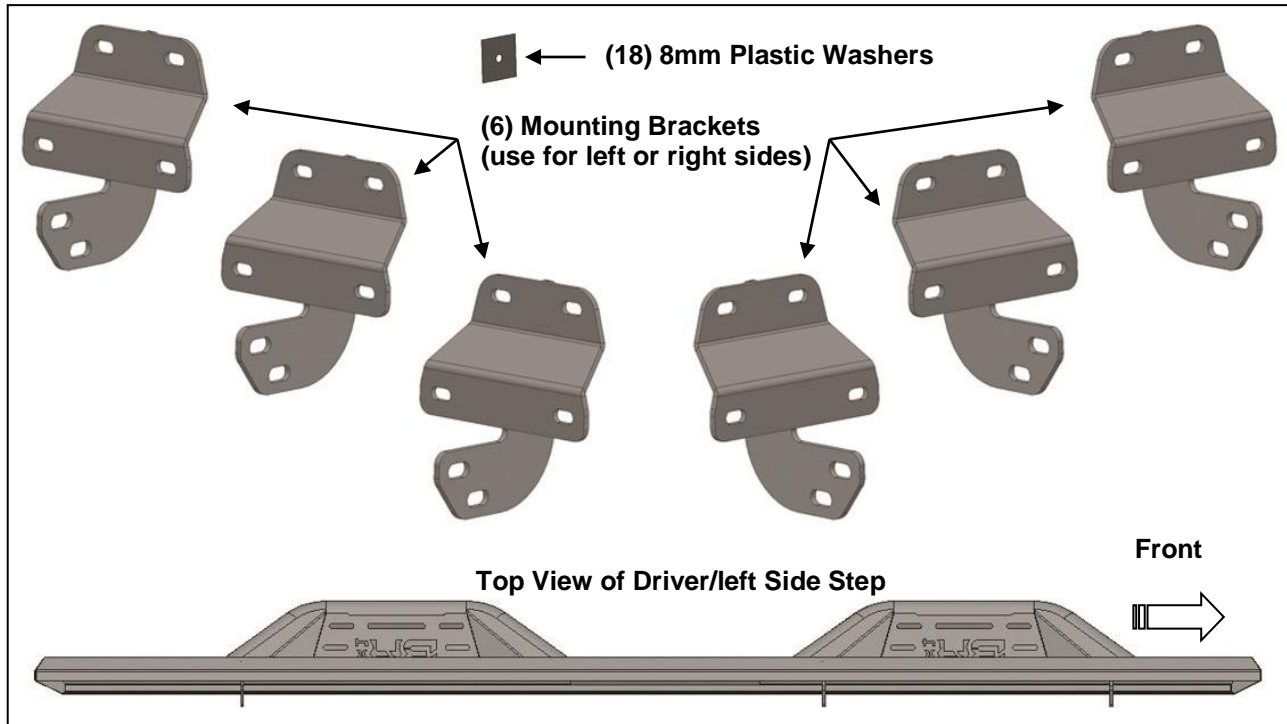


**Ambush Side Step for 2015-2021 F150 SUPERCREW CAB/
2017-2021 F250/350/450/550 SUPER DUTY CREW CAB
PART #FD-4200**

PARTS LIST:

1	Driver/left Running Board	24	10mm x 20mm x 2mm Washers
1	Passenger/right Running Board	12	10-1.5mm Nylon Lock Nuts
6	Mounting Brackets (left or right)	18	8mm x 24mm x 2mm Washers
18	8mm Plastic Retainers	18	8-1.25mm Nylon Lock Nuts
12	10-1.5mm x 30mm Hex Bolts		



PROCEDURE:

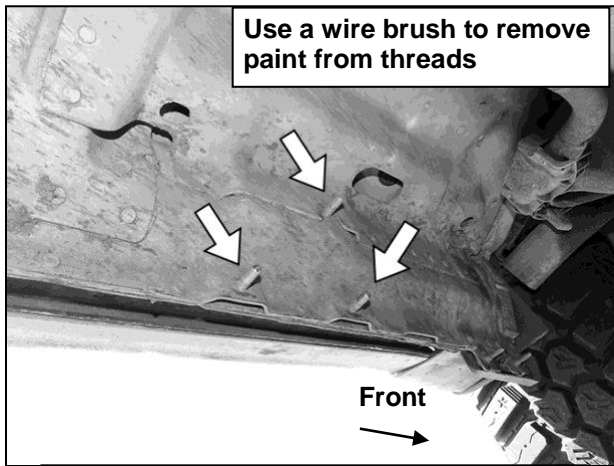
REMOVE CONTENTS FROM BOX. VERIFY ALL PARTS ARE PRESENT. READ INSTRUCTIONS CAREFULLY BEFORE STARTING INSTALLATION. ASSISTANCE IS RECOMMENDED.

1. Start the installation under the driver/left side of the vehicle. Locate the front factory running board mounting location along the inner side of the body, **(Figure 1)**. **IMPORTANT: Clean mounting studs with wire brush to remove paint/undercoating and debris.**
2. Slide (1) Plastic Washer over each of the (3) factory mounting studs in the body panel, **(Figures 2 & 3)**. **IMPORTANT: The Plastic Washers are designed to prevent corrosion between the aluminum body panel and the steel mounting Brackets. Do not install the Brackets without the Plastic Washers.**
3. Select (1) Mounting Bracket. **NOTE: All (6) Brackets are universal and will fit left or right side.** Attach the Mounting Bracket to the (3) factory studs with (3) 8mm Flat Washers and (3) 8mm Nylon Lock Nuts, **(Figures 4 & 5)**. Leave brackets loose at this time.
4. Move to the center mounting location. Repeat **Steps 1—3** to install the center Mounting Bracket, **(Figure 6)**. Continue toward the rear of the cab to locate the rear mounting location, **(Figure 7)**. Repeat the previous Steps to install the rear Bracket, **(Figure 8)**.
5. Carefully unwrap and select the driver/left Side Step. **IMPORTANT: The front and center mounting tabs on the back of the Side Step are slightly closer to the front end of the Side Step.**

6. With assistance, attach the tabs on the Side Step to the front facing side of the Brackets with (6) 10mm Hex Bolts, (12) 10mm Flat Washers and (6) 10mm Nylon Lock Nuts, **(Figures 9—12)**. Do not tighten hardware at this time.
7. Level and adjust the Ambush Side Step as necessary and fully tighten all hardware.
8. Repeat **Steps 1—7** for the passenger/right Ambush Side Step installation.
9. Do periodic inspections to the installation to make sure that all hardware is secure and tight.

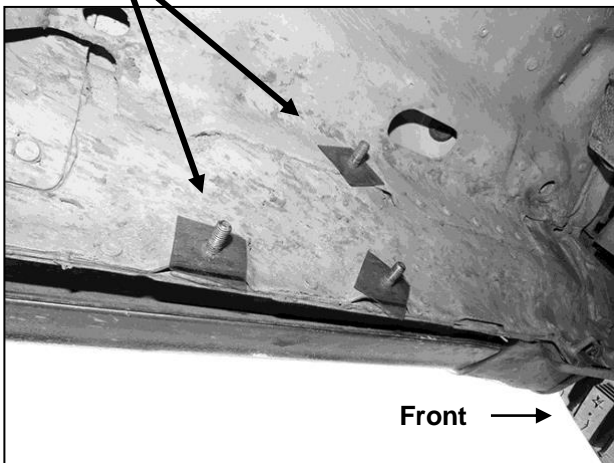
To protect your investment, Do not use any type of polish or wax that may contain abrasives that could damage the finish. Mild soap may be used also to clean the Running Board.

Driver/left Side Installation Pictured

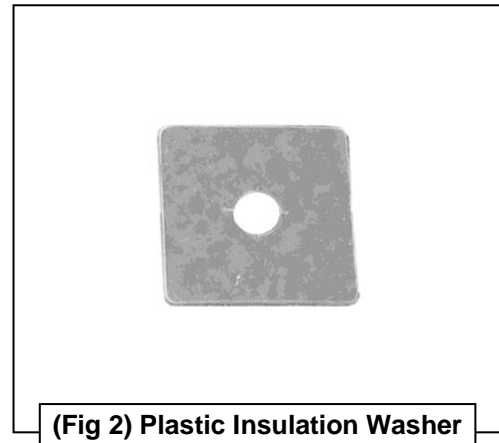


(Fig 1) Driver/left front mounting location

(3) Plastic Insulation Washers

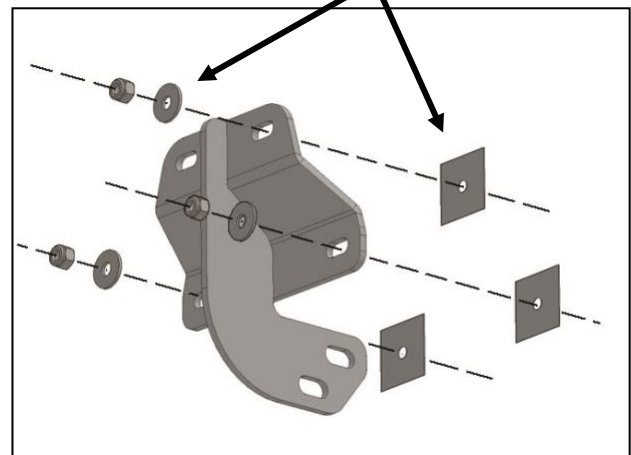


(Fig 3) Thread Plastic Washers onto all mounting studs. Passenger side rear mounting location pictured



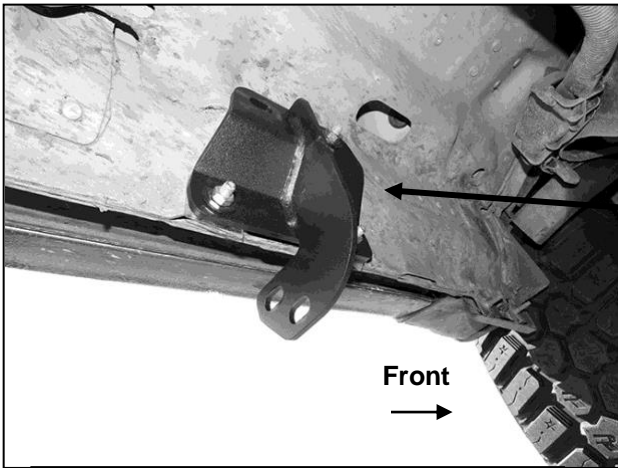
(Fig 2) Plastic Insulation Washer

**(3) 8mm Plastic Washers
(3) 8mm Flat Washers
(3) 8mm Nylon Lock Nuts**



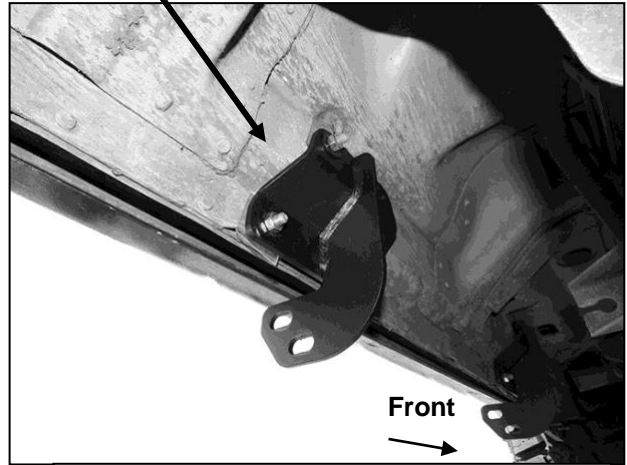
(Fig 4) Typical Bracket installation illustrated

Driver/left Side Installation Pictured

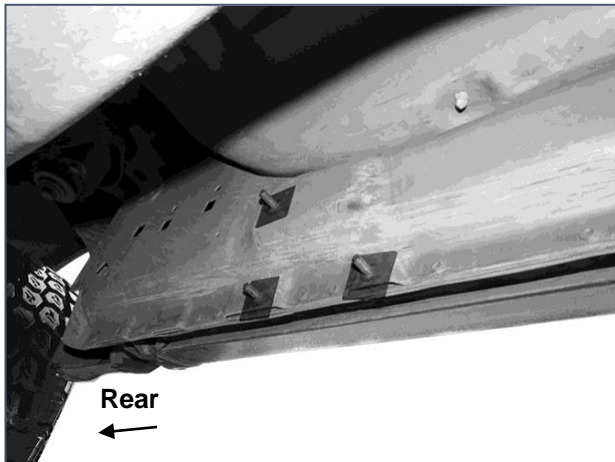


(Fig 5) Driver/left front Bracket installed

- (3) 8mm Plastic Washers
- (3) 8mm Flat Washers
- (3) 8mm Nylon Lock Nuts



(Fig 6) Driver/left center Bracket installed



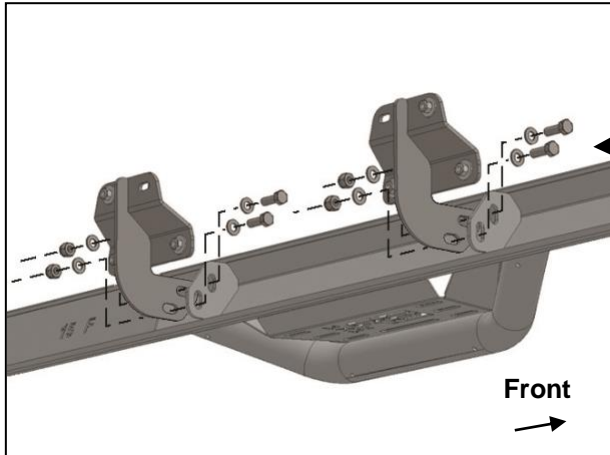
(Fig 7) Driver/left rear mounting location

- (3) 8mm Plastic Washers
- (3) 8mm Flat Washers
- (3) 8mm Nylon Lock Nuts



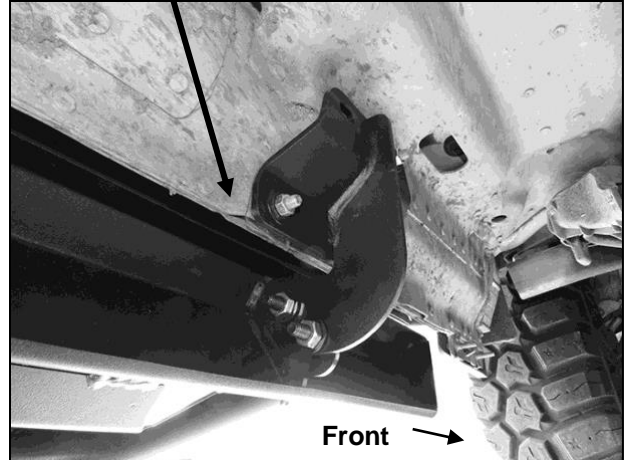
(Fig 8) Driver/left rear Bracket installed

Driver/left Side Installation Pictured



(Fig 9) Attach driver/left Ambush side step to Brackets (front and center Brackets illustrated)

- (2) 10mm Hex Bolts
- (4) 10mm Flat Washers
- (2) 10mm Nylon Lock Nuts



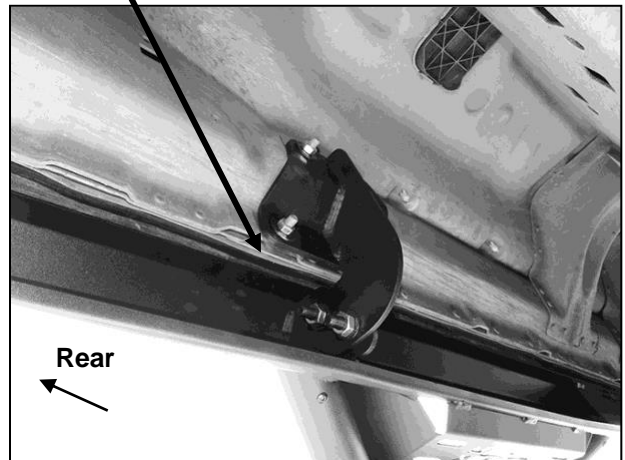
(Fig 10) Driver/left Ambush side step attached to front Bracket

- (2) 10mm Hex Bolts
- (4) 10mm Flat Washers
- (2) 10mm Nylon Lock Nuts



(Fig 11) Driver/left Ambush side step attached to center and front Brackets

- (2) 10mm Hex Bolts
- (4) 10mm Flat Washers
- (2) 10mm Nylon Lock Nuts



(Fig 12) Driver/left Ambush side step attached to rear Bracket