

INSTALLATION INSTRUCTIONS

2005-2021 Toyota Tacoma Double Cab Short Bed Revo Step Sliders PART#TC-4124

PARTS LIST:

Parts List	
16 qty	Flat Washer
16 qty	Locking Washers
16 qty	M12x1.75 (1-5/8" long) Bolts
18 qty	Hardware Brackets
1 qty	Left Rock Slider
1 qty	Right Rock Slider
Optional Blue Thread locker for added safety (Not Included)	

Note: There maybe be extra hardware for other truck applications.



PROCEDURE:

REMOVE CONTENTS FROM BOX. VERIFY ALL PARTS ARE PRESENT. READ INSTRUCTIONS CAREFULLY BEFORE STARTING INSTALLATION. ASSISTANCE IS RECOMMENDED TO AVOID POSSIBLE INJURY OR DAMAGE TO THE VEHICLE. CUTTING OE FRONT BUMPER IS REQUIRED.

1. Before installing any product, please ensure you have all the following hardware in an accessible location for ease of installation.



2. Before starting the installation, please place the slider to the corresponding side it will be installed on and place the mounting hardware to each side.

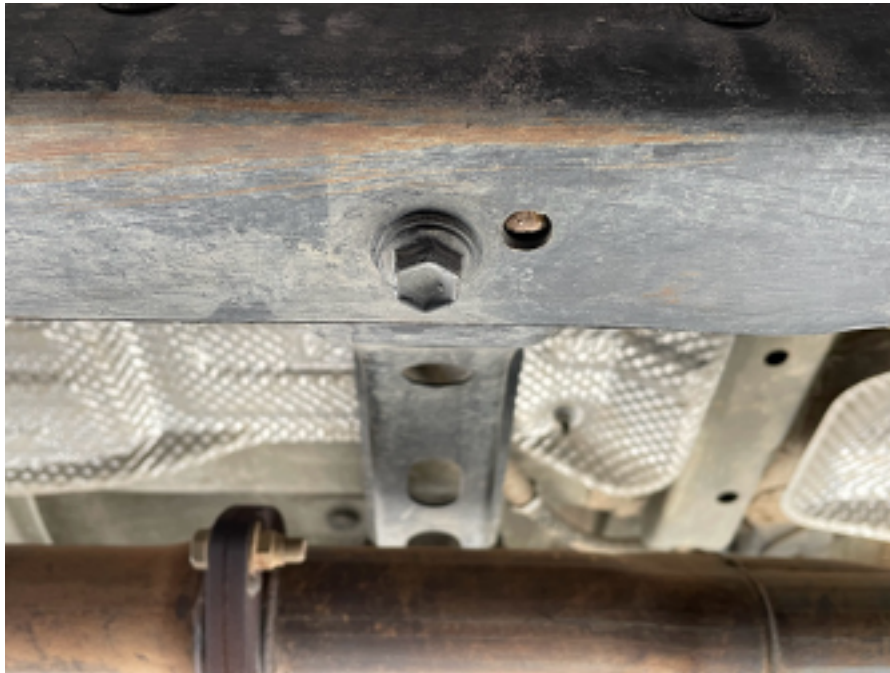


3. We start the installation process on the passenger side, its best to have help from a friend for the installation. If you do not have another person, please safely elevate the slide using jack stands or a jack.



4. With a friend or using floor jacks raise the slider to the frame of the truck to test fit and make sure the mounting holes are lined up.

Before you do so, there's a 14mm bolt that must be removed and saved. It is part of the driveshaft center supporting bracket.



**Please note on some frames there are plastic caps or stickers covering the holes where the bolts go through. If your truck has those, carefully remove them with a flat screwdriver or peel the stickers off from both sides of the truck. **

5. Now lift the slider to align with the mounting holes and use the 14mm bolt that you have just removed, screw that bolt on but not all the way tight.



6. Once that's done, you can start bolting up the front of the slider with the provided hardware. Please keep in mind that the flat plate with the welded nut on is going to be on the inner inside of the frame. For the front of the slider, you will need the long hardware bracket with 2 nuts welded to it.



This will need to be held and aligned with the help of a friend or in a way you have access to the side inside of the frame. Use the supplied hardware to mount the bracket with the screw in the opening of the frame. Only finger tighten the bolts & do not fully torque them down just yet.

*Optional step is to add a thread locker to the bolt for extra safety. *



Note: Picture below is how the bracket and hardware should be mounted.



7. Once that's done, you will need one of the flat plates with the welded nut on it. This is the tricky step; I recommend using a magnetic stick to get the plate nut into the crossmember part of the frame to align the holes together.



On this step, you will need to take your time and be patient to get the alignment properly. As stated before, you can add an optional small amount of thread locker to ensure the bolt does not backout.

** Please note that you will need to adjust the slider to get the mounting bracket on to mate to the frame and with the nut plate. The front section is the most difficult, once it's on then you will have a lot more adjustment in the rear side of the slider installation. Please see the photo below for reference. **



- This step is for the rear, which you need 2 flat nut plates and bolts. Don't forget to add a little of the thread locker on each bolt! Once you have bolted those 2 in the rear you can proceed to bolt up the center of the slider to the frame.



The next step will be a bit challenging but very doable. On to the next step!!

- This step you will need the brackets that has a bend to them.



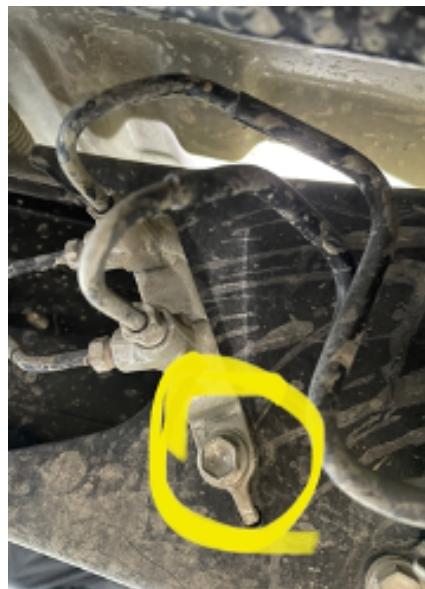
You will need to use a little bit of force to position these brackets to align with the mounting tabs on the slider.

The bracket that has a small bend at the tip will be mounted in the rear of the slider bracket. The bracket that looks like a "S" will be mounted closer to the center of the slider bracket. There will be two spacers that will go along with the "S" brackets, one on each side.



Now that you have everything bolt up, tight up all the bolts to spec.

Ok so now on to the driver side. This side mount the same Except you would need to remove the wire loom clip towards the front to slide the slider bracket under the wire loom and the metal lines bracket bolt on the inner side of the frame to gain access to the front frame opening.



Hard brake lines bracket bolt must be removed to have room to slide the bracket with the double nuts plate.

Now go out and make some memories!

