



Chandler, Arizona
PHONE (800) 380-0103

MODEL

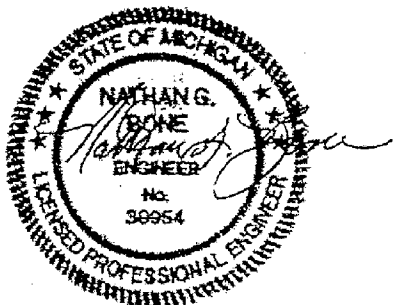
S4D8X16

SERIAL NUMBER

25254

REFERENCE TO OCCUPATIONAL SAFETY AND HEALTH ADMINISTRATION RULES AND
REGULATIONS, 29 CFR, NO 209, PART 1926, SUBPART P

SHIELD SIZE		PSF RATING	MAXIMUM ALLOWABLE DEPTH OF CUT (FEET)		
			D SOIL TYPE TO BE EXCAVATED		
HEIGHT (FEET)	LENGTH (FEET)	MAXIMUM LATERAL EARTH PRESSURE CAPACITY AT TRENCH BOTTOM IN POUNDS PER SQUARE FOOT	TYPE A STIFF, COHESIVE SOIL. 25 PSF PER FOOT OF DEPTH.	TYPE B MEDIUM COHESIVE TO GRANULAR SOIL. 45 PSF PER FOOT OF DEPTH.	TYPE C SOFT COHESIVE TO SUBMERGED SOIL. 60 PSF PER FOOT OF DEPTH.
8	16	1560	62	35	26
LIMITATIONS IN USE OF TABLE 1. TRENCH SHIELD TO BE ASSEMBLED AND INSTALLED AS SHOWN AND IN ACCORDANCE WITH MANUFACTURER'S INSTRUCTIONS. 2. EXCAVATION 2 FEET BELOW BOTTOM OF SHIELD IS PERMITTED WHEN NO LOSS OF SOIL FROM BEHIND OR BELOW THE BOTTOM OF SHIELD IS ENCOUNTERED. SEE PARAGRAPH 1926.652 (e)(2)(i). THE COMPETENT PERSON SHALL MAKE THE DETERMINATION FOR COMPLIANCE. SUDDEN SHIFTING OF THE SHIELD VERTICALLY SHALL BE AVOIDED. 3. CONSULT MANUFACTURER WHEN RESTRICTION ON NOTE 2 IS NOT MET. 4. ADDITIONAL SHIELDS MAY BE STACKED WITH NO PENALTY IN DEPTH OF CUT AS LONG AS THE RATING OF THE BOTTOM SHIELD IS NOT EXCEEDED. 5. DEPTHS OF CUTS SHOWN ARE BASED ON EXAMPLES OF VARIOUS SOIL CONDITIONS. VERIFY ACTUAL SOIL PRESSURES PRIOR TO EACH USE. 6. ANY MODIFICATIONS OR ALTERATIONS NOT ALLOWED UNLESS APPROVED IN WRITING BY EFFICIENCY PRODUCTION, INC. 7. CONTRACTOR'S COMPETENT/QUALIFIED PERSON SHALL BE RESPONSIBLE FOR MONITORING SOIL CONDITIONS. CONTINUED ON REVERSE SIDE			DESCRIPTION Clay, silty clay, sandy clay, clay loam, unconfined compressive strength of 1.5 tons per square foot or greater. (see note 8 on reverse side)	DESCRIPTION Clay with unconfined compressive strength greater than .5 TSF but less than 1.5 TSF, cohesionless gravel, silt, silt loam or sandy loam. (see note 9 on reverse side)	DESCRIPTION Clay with unconfined compressive strength less than .5 TSF submerged sand, clay or fractured rock that is not stable. (see note 10 on reverse side)
			<p>LAYBACK AND SLOPE AT A MINIMUM OF .75 TO 1 FOR A-SOILS, 1 TO 1 FOR B-SOILS, OR 1.5 TO 1 FOR C-SOILS</p> <p>A-SOILS (.75 TO 1 SLOPE)</p> <p>B-SOILS (1 TO 1 SLOPE)</p> <p>C-SOILS (1.5 TO 1 SLOPE)</p> <p>NOTE: 1'-6" MIN.</p>		



CERTIFIED BY:

EFFICIENCY PRODUCTION, INC.
JULY 29, 2005

COPYRIGHT:

1991 EFFICIENCY PRODUCTION, INC.
ALL RIGHTS RESERVED

MANUFACTURED UNDER ONE OR MORE OF THE FOLLOWING U.S. PATENT NUMBERS;
4,090,365-4,114,383-4,259,028
ONE OR MORE OF THE FOLLOWING CANADIAN PATENT NUMBERS: 1,062,683-1,062,684

USE THIS PRODUCT ONLY IN ACCORDANCE WITH APPLICABLE
FEDERAL, STATE, OR LOCAL LAWS

Any use of this product not specifically described on this certificate could cause cave-in, collapse, or structural failure resulting in death or serious injury.

SAFE-T-SHORE

REV. 7-30-02

PAGE 2 OF 2

8. NOT TYPE A IF FISSURED, SUBJECT TO VIBRATION, PREVIOUSLY DISTURBED OR PART OF A SLOPED LAYERED SYSTEM WHERE LAYERS DIP INTO EXCAVATION ON A SLOPE OF FOUR HORIZONTAL TO ONE VERTICAL (4H:1V) OR GREATER.
9. PREVIOUSLY DISTURBED SOILS MAY BE TYPE B UNLESS THEY WOULD BE CLASSIFIED AS TYPE C. SOIL THAT MEETS REQUIREMENTS OF TYPE A, BUT IS SUBJECT TO VIBRATION OR FISSURED MAY BE TYPE B. DRY ROCK THAT IS NOT STABLE OR SOIL THAT IS PART OF A SLOPED, LAYERED SYSTEM WHERE LAYERS DIP INTO THE EXCAVATION ON A SLOPE LESS STEEP THAN FOUR HORIZONTAL TO ONE VERTICAL (4H:1V) ARE TYPE B BUT ONLY IF MATERIAL WOULD OTHERWISE BE CLASSIFIED AS TYPE B.
10. SOIL IN A SLOPED LAYERED SYSTEM WHERE LAYERS DIP INTO THE EXCAVATION ON A SLOPE OF FOUR HORIZONTAL TO ONE VERTICAL (4H:1V) OR STEEPER MAY BE TYPE C. SUBMERGED SOIL IS MATERIAL WITH WATER FREELY SEEPING AND ENTERING THE TRENCH, BUT ONLY PART OF THE DEPTH OF THE RETAINED SOIL IS SUBMERGED. CONDITIONS MORE SEVERE WOULD REQUIRE DEWATERING OR SEALING FOUR SIDES OF THE EXCAVATION AND PUMPING THE TRENCH. SUCH SEVERE CONDITIONS WOULD REQUIRE THE SERVICES OF A SOILS ENGINEER TO ESTABLISH THE DESIGN PRESSURE. CONSULT THE MANUFACTURER FOR PRESSURES EXCEEDING TABULATED VALUES.
11. LAYBACK AND HANG UP ARE NOT APPLICABLE TO TYPE C-80 SOILS. SOME TOE-IN IS PREFERRED, THEREFORE THE REQUIRED HEIGHT FOR THE TRENCH SHIELD SHOULD BE CAREFULLY CONSIDERED. SURCHARGES ADJACENT TO THE EXCAVATION SHOULD BE AVOIDED. FOUR SIDED TRENCH SHIELDS ARE STRONGLY RECOMMENDED.
12. ANY USE OF A TRENCH SHIELD WITHOUT EFFICIENCY SPREADERS AND PINS OR EQUAL WILL VOID THE TABULATED DATA AND WARRANTY.
13. SHIELD WAS DESIGNED TO BE USED WITHOUT PLATES EXTENDING BELOW, ABOVE, OR NEXT TO IT. ANY USE OF SUCH PLATES OR PANELS MAY VOID THE TABULATED DATA, AND MAY REQUIRE SITE SPECIFIC ENGINEERING.
14. TRENCH SHIELDS ARE DESIGNED TO BE PUSHED TO GRADE IF NECESSARY. AS NOTED BELOW, ANY UNNECESSARY ABUSE BY THE EXCAVATOR AND OR OPERATOR (SUCH AS POUNDING WITH THE BUCKET) WILL VOID THE TABULATED DATA AS WELL AS THE WARRANTY.
15. AN EXCAVATOR SHALL BE RATED TO HANDLE 1 1/2 TIMES THE WEIGHT OF THE SHIELD AND SPREADERS (ACCORDING TO THE MANUFACTURERS LIFTING CAPACITY CHART FOR THAT MACHINE) AT GRADE AND AT A RADIUS OF 20' FROM THE CENTER OF THE EXCAVATOR.
16. CONDITION OF SHIELD, SPREADER PIPES, AND SPREADER PINS MUST BE CHECKED/INSPECTED FOR SERVICEABILITY BY THE COMPETENT PERSON PRIOR TO EACH USE. PSF RATING IS NOT VALID IF THERE IS ANY VISIBLE DAMAGE TO, OR REPAIRS MADE TO THE SHIELD THAT HAVE NOT BEEN DOCUMENTED AND CERTIFIED BY A REGISTERED PROFESSIONAL ENGINEER.

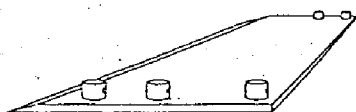
Assembly

Lay side panel flat on ground with collar sockets up

Place spreader pipe and/or plate onto collars or into brackets and pin in place. Secure pins with keepers.

Lower second sidewall onto spreaders and pin.

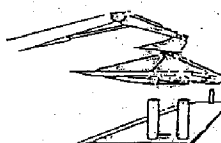
Stand trench shield in upright position and prepare for installation.



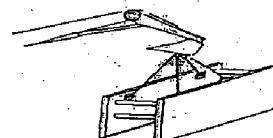
Mud Plate Spreader System



5 Pipe Spreader System



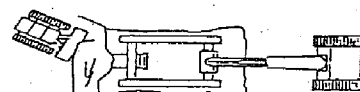
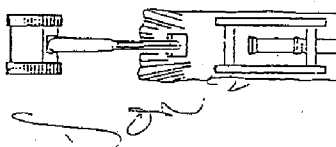
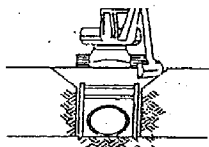
4 Pipe Spreader System

**Using a trench shield in stable soil**

Excavate to grade just slightly wider than the trench shield. Dig walls vertical to minimum of 18" below the top of the shield. Slope soil above shield according to OSHA regulations. Install shield in trench.

Excavate in front of the trench shield

Pull shield forward by front top spreader pipe or with pulling eyes. (pulling eyes shall be used with spreaders wider than 72" or when soil pressure is severe enough to cause spreader to deflect).

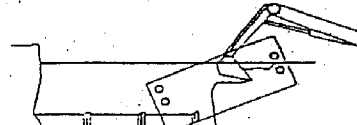
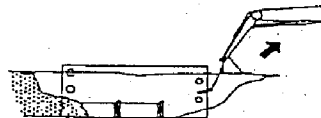
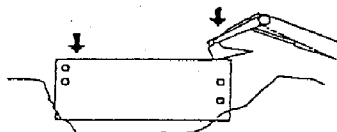
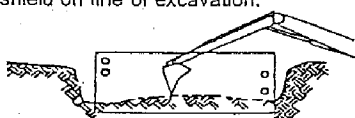
**Using a shield in unstable soil**

Excavate until soil begins to crumble beyond desired trench width. Place shield on line of excavation.

Press down on corners to push shield down to grade

Pull shield forward and up on appropriate angle.

Excavate soil within the shield and repeat previous process.

**Using shields for patchwork, repairs or tie-ins**

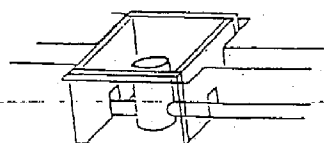
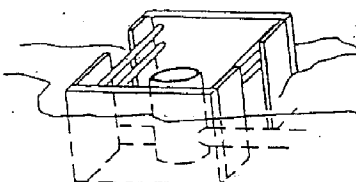
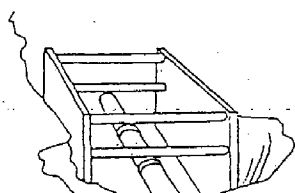
- * Center shield over work area.
- * Lay soil at ends back according to OSHA regulations or use manufacturer's designed end plates to protect from cave-ins.

Manhole box with corner end plates

Corner end plates help prevent loose material from running into the end of the shield. Soil at ends should be sloped according to OSHA regulations.

Using 4-sided shields

When using shields as protection during manhole assembly work, insure that proper end panels are used, or lay soil at the ends back according to OSHA regulations.



- * This material is intended to provide basic assembly and installation information only.
- * Always use trench shield in accordance with applicable local, state, and federal safety laws and regulations. Failure to do so could cause severe injury or death.
- * No deviation from the shield specifications, recommendations, and limitations is allowed without written approval.