

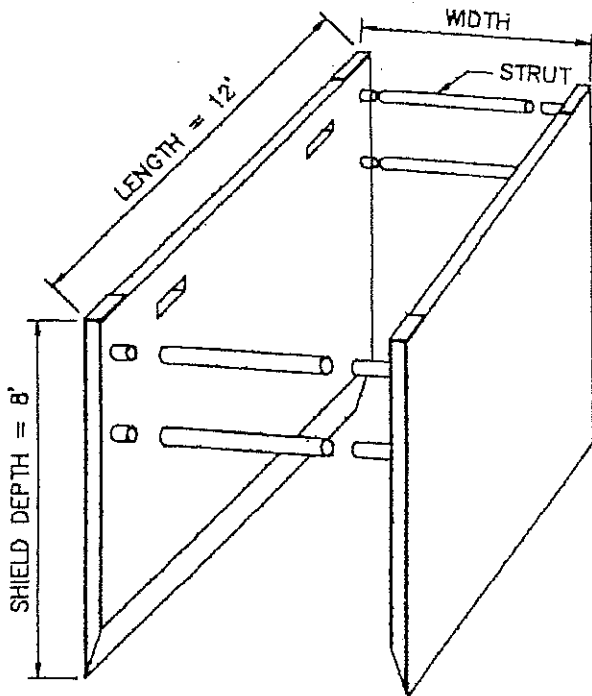
MANUFACTURERS TABULATED DATA SHEET

MANUFACTURER'S DATA

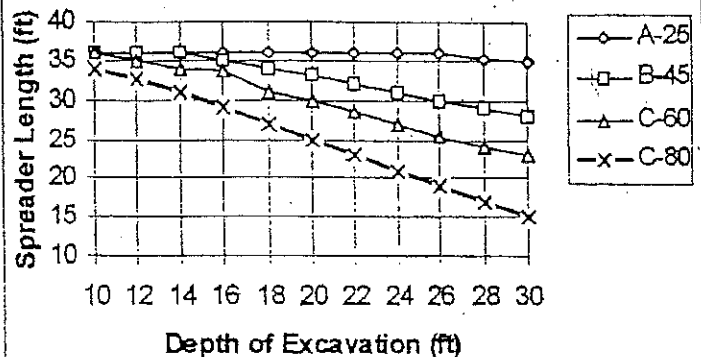
MODEL NO.	SI-4SDW-812		
SHIELD DEPTH	8'	LENGTH	12'
TOTAL SHIELD WEIGHT	6000 LBS.		
STRUT	8" Ø SCH 80		

ALLOWABLE LOADING AND DEPTH

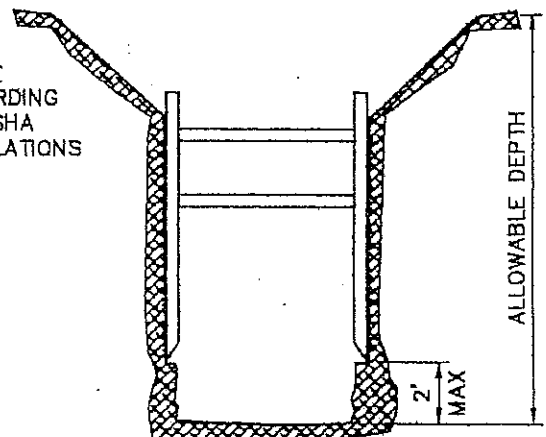
ALLOWABLE LOADING	1690 PSF
ALLOWABLE SOIL DEPTH	
TYPE A-25	30 FT.
TYPE B-45	30 FT.
TYPE C-60	28 FT.
TYPE C-80	21 FT.



8" Sch 80 Spreader, 8x12 Shield
Allowable Spreader Lengths



SLOPE
ACCORDING
TO OSHA
REGULATIONS



NOTES:

- ALL EXCAVATIONS SHALL BE IN CONFORMANCE WITH OSHA CFR 29, PART 1926, SUBPART P, JULY 1997, AND CAL OSHA SAFETY ORDERS TITLE 8 SECTION'S 1504, 1539-1547.
- SOILS CLASSIFICATION SHALL BE IN COMPLIANCE WITH APPENDIX A IN OSHA CFR 29, PART 1926, SUBPART P. LATERAL EARTH PRESSURE SHALL BE DETERMINED AS FOLLOWS:
 TYPE A-25 SOIL 25 PSF X DEPTH
 TYPE B-45 SOIL 45 PSF X DEPTH
 TYPE C-60 SOIL 60 PSF X DEPTH
 TYPE C-80 SOIL 80 PSF X DEPTH
- ANY VARIATION MUST BE APPROVED IN WRITING BY TRENCH PLATE RENTAL.
- SOIL ABOVE TOP OF SHIELD TO BE SLOPED ACCORDING TO OSHA REGULATIONS.
- STRUTS MUST REMAIN IN PLACE WHILE SHIELD IS IN EXCAVATION.
- SHIELD MAY BE HELD 2' ABOVE THE BOTTOM OF THE TRENCH. HOWEVER LOADING SHALL BE DETERMINED FOR FULL TRENCH DEPTH.
- SURCHARGE LOAD TO BE DETERMINED BY A COMPETANT PERSON OR ENGINEER.
- SHIELD SHALL BE ASSEMBLED PRIOR TO USE IN EXCAVATION.
- SHIELDS MAY BE STACKED.
- SHIELD LIFTING SYSTEMS SHALL BE DESIGNED FOR SHIELD WEIGHT AND STRUT WEIGHT + AN APPROPRIATE FACTOR OF SAFETY.
 STEEL PLATES OR SHEETING MAY BE USED ON ENDS OF SHIELD FOR WIDTHS UP TO 8' FOR WIDTHS WIDER THAN 8FT. USE A DESIGN BY A REGISTERED CIVIL ENGINEER.



TITLE: 8' X 12'
SHIELD



J.M. TURNER ENGINEERING, INC.
CONSULTING ENGINEERS



705 COLLEGE AVE., SANTA ROSA, CA. 95404
(707) 528-4503 FAX (707) 528-4505
4534 S.E. 17th AVE., PORTLAND, OR. 97202
(503) 234-2402 FAX (503) 234-2326

DATE: 3/11/98 REVISED: JOB NO: 5133/8X12