



**J.M. TURNER  
ENGINEERING, INC.**  
**Consulting Engineers**

CIVIL ENGINEERING • STRUCTURAL ENGINEERING  
CONSTRUCTION ENGINEERING

1325 College Avenue \* Santa Rosa, CA 95404 \* Phone (707) 528-4503 \* Fax (707) 528-4505

## E-MAIL TRANSMITTAL COVER SHEET

TO: Dana Fredette  
COMPANY: Trebor Shoring Rentals  
PHONE: 619-315-9067  
E-MAIL: See Below

FROM: Mike Miyano  
DATE: 7/19/2022  
PAGES: 2 including cover sheet  
RE: tab data - HS-20-44 Loading

E-MAILED BY: Robbie M. TIME: 4:55 p.m.

### MESSAGE:

Job #13989-1.

james@tsrc.com

dfredette@tsrca.com

Thank you!

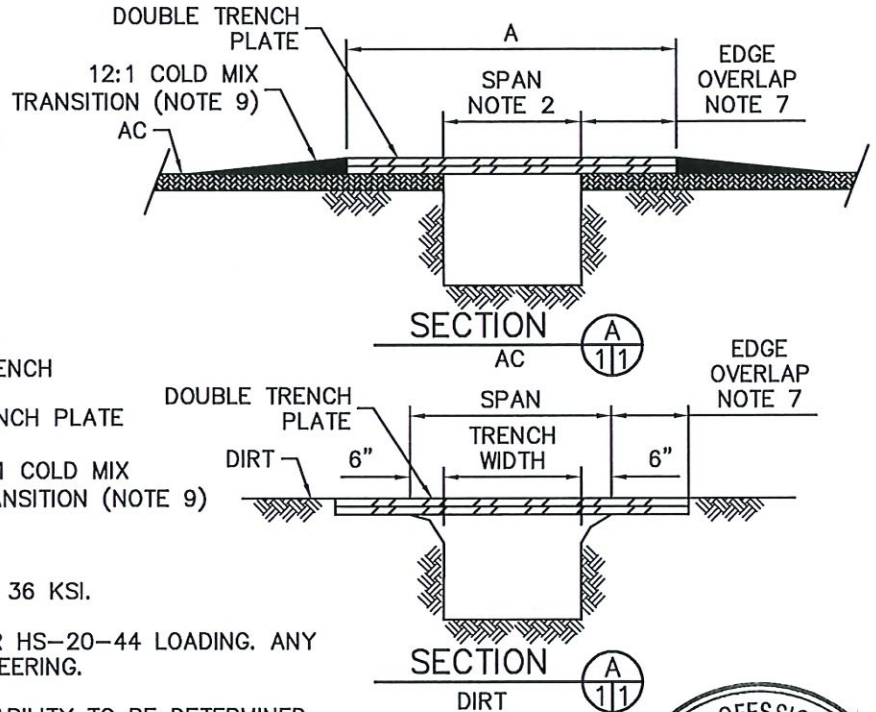
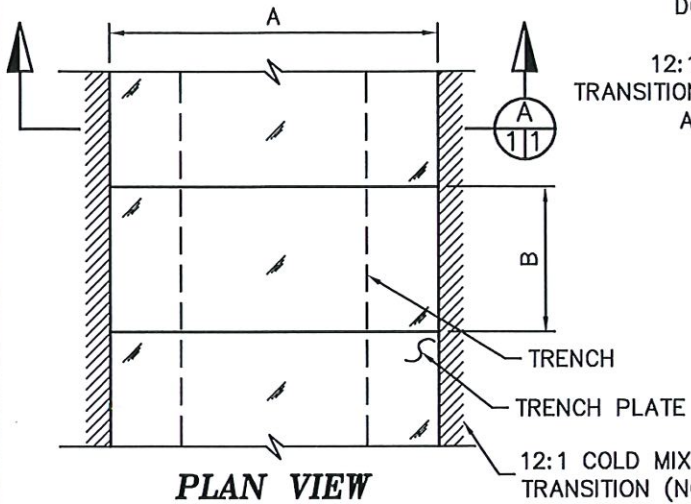
# TREBOR SHORING RENTALS

## MANUFACTURERS TABULATED DATA SHEET

### DOUBLE TRAFFIC PLATES

#### HS-20-44 LOADING

PLATE THICKNESS (IN)	MAX. ALLOW. SPAN (FT)
1" OVER 1"	8'-3"
1" OVER 1.5"	13'-6"
1.5" OVER 1.5"	15'-6"



#### NOTES

1. PLATES ARE ASTM A36 MIN. STEEL,  $F_y = 36$  KSI.
2. SPAN OR TRENCH WIDTH IS DESIGNED FOR HS-20-44 LOADING. ANY SPACE EXCEEDING TABLE REQUIRES ENGINEERING.
3. CHART IS BASED ON STABLE TRENCH. STABILITY TO BE DETERMINED BY COMPETENT PERSON OR ENGINEER.
4. PLATES MUST BE PLACED WITH POSITIVE CONTACT ON ALL SUPPORTING SURFACES AS TO PREVENT ACCIDENTAL MOVEMENT FROM TRAFFIC DEFLECTION (COLD PATCH CAN BE USED TO DISPLACE ANY VOIDS BETWEEN THE PLATE AND SUPPORTING SURFACE).
5. PLATES MAY REQUIRE ANCHORAGE WHEN SPEEDS EXCEED 45 MPH OR ON SLOPES GREATER THAN 5% (IN ACCORDANCE WITH LOCAL REQUIREMENTS, COMPETENT PERSON, OR ENGINEER).
6. EDGE OVERLAP SHALL BE AS FOLLOWS:
  - a. ASPHALT-TRAFFIC SPEED UNDER 45 MPH; TRENCH WIDTH + 24" MIN. (12" EA. PER SIDE)
  - b. ASPHALT-TRAFFIC SPEED OVER 45 MPH; TRENCH WIDTH + 48" MIN. (24" EA. PER SIDE)
  - c. DIRT-TRAFFIC SPEED UNDER 45 MPH; TRENCH WIDTH + 48" MIN. (24" EA. PER SIDE)
7. PLATES USED ON DIRT WITH TRAFFIC SPEED EXCEEDING 45 MPH REQUIRES ENGINEERING.
8. PLATES USED ON A/C WITH TRAFFIC SPEED EXCEEDING 55 MPH REQUIRES ENGINEERING.
9. THERE SHOULD BE A MINIMUM OF 18" COLD MIX TRANSITION RAMP ALL AROUND.



TITLE:

**DOUBLE TRAFFIC PLATES**



**J.M. TURNER ENGINEERING, INC.**  
**CONSULTING ENGINEERS**  
 1325 COLLEGE AVE., SANTA ROSA, CA 95404  
 (707) 528-4503 FAX (707) 528-4505

DATE:

05/22/14

REVISED:

07/19/22

FILE NO:

13989-1/P1