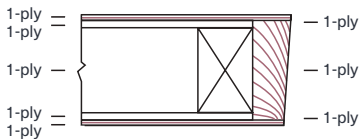
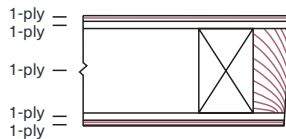


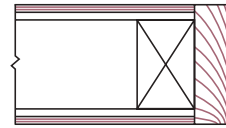
DOOR EDGE CONSTRUCTION AND TYPES



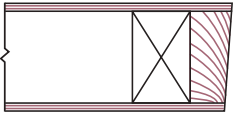
"Edge" Type D
 5-ply door. No visible reinforcement ply (blind edge)



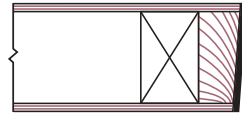
"Edge" Type A (Standard)
 5-ply door. 1 visible reinforcement ply



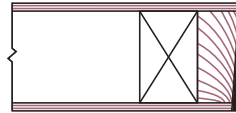
"Edge" Type F
 Hardwood face applied to the edge



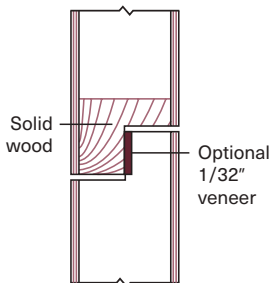
Standard Baillargeon edge on both sides. Clearance 1/8" over 2" (3 mm over 51 mm)
 Standard lock and hinge side



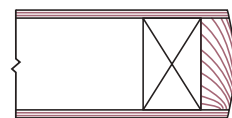
"Edge" Type B
 5-ply veneer edge (VE).
 Recovered with 1/32" wood veneer edge



"Edge" Type C
 Recovered with plastic laminate edge (PE) or PVC impact edge (IE)



Notched top door rail or transom bottom



Radius stiles for double-acting or pivot doors.
 Available different radius.
 3/16", 5/16", 1-5/32", 1-1/2", 1-7/8", 2", 2-3/8", 2-1/2", or 2-5/8"

Other models available upon request or to specifications.

WOOD FACE:

5-ply construction consists of a center core with a wood veneer or composite crossband applied to each side, then a face wood veneer is applied over each crossband.

FIBERBOARD FACE:

3-ply construction consists of a center core with a fiberboard face applied to each side.

HPDL FACE:

5-ply construction consists of a center core with a wood veneer or composite crossband applied to each side, then a laminate is applied over each crossband.