

Dutch Shelves

Dutch Shelves

Shelves include wood brackets for jobsite installation.

Plastic for shelves is shipped loose for jobsite application.

Use #12x2" full threaded screws. Use one screw for each foot or fractional foot of shelf width to attach shelf to top of bottom leaf.

Two screws minimum for any shelf.

Brackets may be attached with any combination of screws, nails and/or glue.

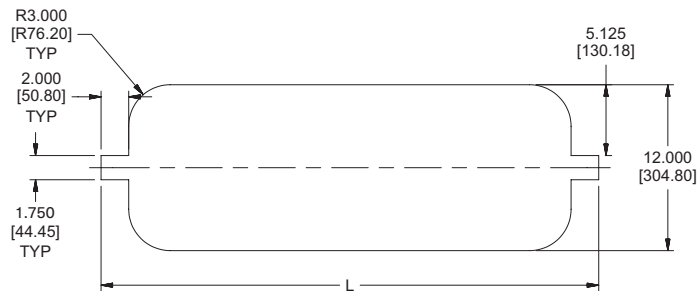
On 20-minute Dutch doors, a 1/16"x1/2" intumescent strip is factory installed in the bottom rail of the top leaf.

Shelf ends are trimmed to length and beveled as ordered.

SINGLE SIDED OPTION



DOUBLE SIDED OPTION



DUTCH SHELF BRACKET PROFILE

