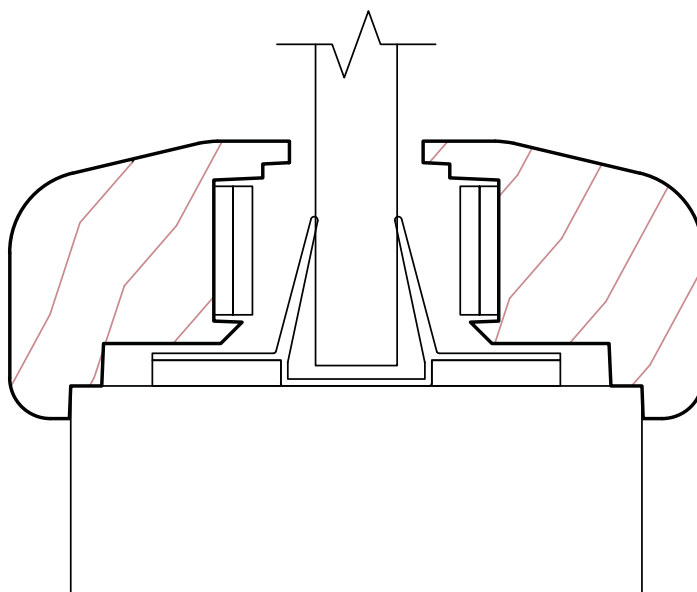


## AF45 CONSTRUCTION - FIRE-RESISTANT 45-MIN.

Manufacturer's choice of hardwood or matched to the face upon request.

### Standard Models

Oak and birch in stock



---

### Fire-rated norm for AF45 door:

Cut outs must be a minimum of 4" from the side or top or bottom of the door and/or from other cut outs or pre-machining cut outs.

### Maximum vision allowed per door:

45 min. fire rated Agrifiber: 1296 sq. in. model "LXS" moulding only and a maximum of 36" wide or 54" total height