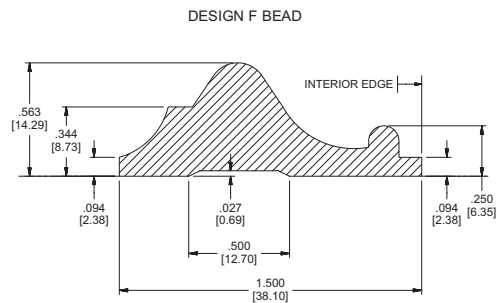
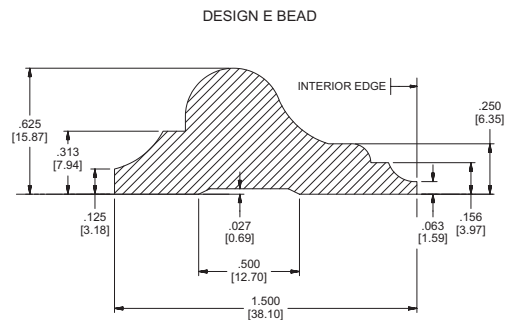
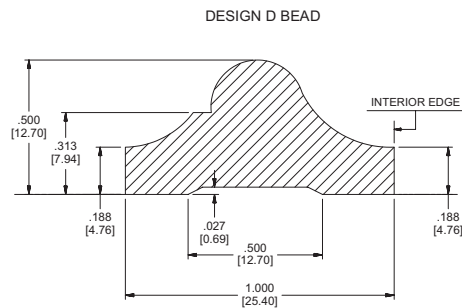
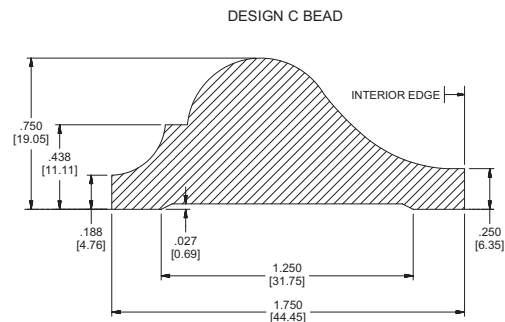
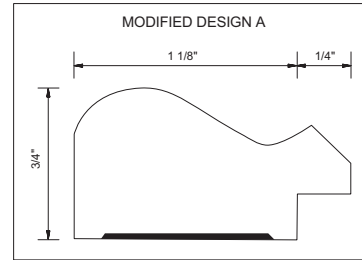
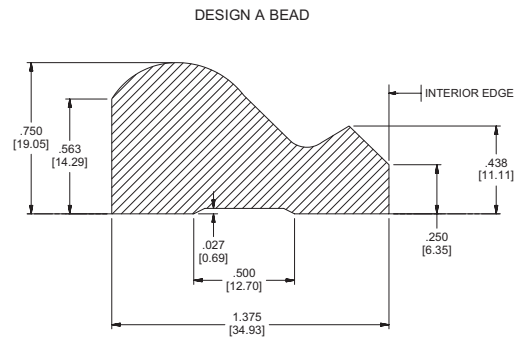


Applied Mouldings

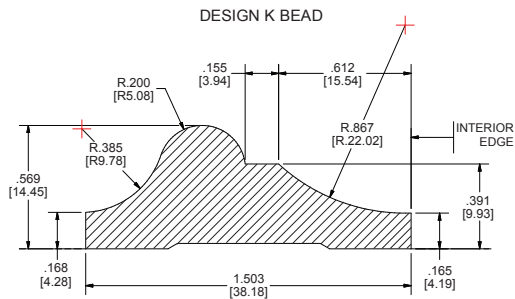
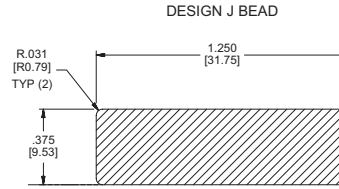
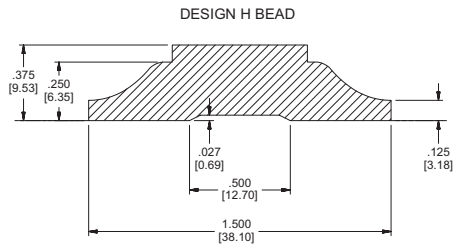
Forte™ Opening Solutions offers nine standard applied moulding profiles in most species of lumber. Design A applied moulding will be used on Aspiro® and Centuro® sketched face doors, unless specified otherwise. Additional custom mouldings are available to suit any project unless specified otherwise (an upcharge for custom moulding will apply and additional lead-time is required).

STANDARD PROFILE DESIGN A BEAD



Notes

- Modified Design A Moulding will be used as standard on Workable Surface Doors with surface applied mirrors, white boards or cork board



Notes

- Modified Design A Moulding will be used as standard on Workable Surface Doors with surface applied mirrors, white boards or cork board

Applied Mouldings for Fire Doors (2)

	ITS-WH-20-minute	UL 20-minute	UL 45-90 minute	ITS-WH 45-90 minute (3,5)
Maximum Size	No Limit	No Limit	1-1/2" X 3/4"	1-1/2" X 3/4"
Application Method	Glue	Glue	Glue	Glue
Minimum Distance Between Parallel Moulding Pieces	No Limit	No Limit	3"	3"
Minimum Distance Between Lite and Applied Moulding	3-1/2"	No Limit	No Limit	3-1/2"
Minimum Distance between Door Edge and Moulding (1)	1"	1"	1"	1"

- (1) Moulding must not interfere with the operation of the door, hardware or accessories.
- (2) Installation of applied moulding on doors with UL or ITS-WH labels must be done by Masonite® Architectural or a licensed machiner.
- (3) 45-90 min. face coverage limited to 20% of face area.
- (4) Must be attached with adhesive only for 90 minute doors and plastic laminate doors.
- (5) Not allowed on 45-90 min plastic laminate doors.