



# ADD A **SPLASH OF COLOUR** TO YOUR PACKAGING

**Do you want to use your logo and brand colours, but still demand Vegware packaging?** Our in-house custom print service helps you brand our award-winning plant-based and compostable catering disposables.

**Stand out from the crowd and let people know who you are.**

**Vegware.com**



# WHY CUSTOM PRINT?

- ✓ Custom printed products help you to **stand out from your competitors**
- ✓ It **enhances and reinforces your visual identity**, raising public awareness of who you are
- ✓ Your takeaway **customers become advocates for your brand**
- ✓ Having a **visual presence on social media is more important than ever** as people increasingly share their experiences online
- ✓ Our **in-house Creative team** can help turn your brand assets into a finished design

Custom **PRINT**  
by **vegware** 



# HOW DOES IT WORK?



We can custom print most of our plant-based products. From logos to full artwork, our designers work with you to showcase your brand. **Here's how it works:**

## Step one

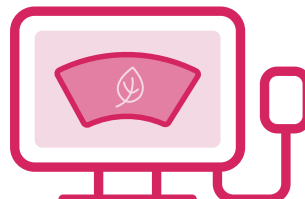


### Choose your product

Many of our products can be custom printed. A full list of your options can be found on our website.



## Step two



### Send us your artwork

Our Creative team can put your design together, or ask for one of our product templates and create it yourself!



## Step three



### Review and approve

Many of our products can be custom printed. A full list of your options can be found on our website.



Our Creative team will spend up to an hour on a custom print request and can amend the design based on your feedback. Over and above this first free hour, we will charge a flat rate for each additional amendment.  
**Get in touch to find out more about our custom print pricing.**



**Ready to order?**

**Enquire now**

# DOUBLE WALL HOT CUPS

Custom **PRINT**  
by **vegware** 

- ✓ Available in 8, 12 and 16oz
- ✓ MOQ of 5,000 cups
- ✓ Lead time of **only 3 - 4 weeks**
- ✓ Available with a **matt or gloss** finish
- ✓ Compostable lids are also available
- ✓ **Made in Ireland**
- ✓ Great thermal properties with two layers of **sustainably-sourced board, lined with plant-based PLA**
- ✓ **Printed using CMYK.** Full colour at no extra cost so the design possibilities are endless!
- ✓ **Add special effects** like embossing, base printing, or even a tear-off tab to transform your cup into a promo voucher



# SINGLE WALL HOT CUPS



- ✓ Available in a variety of **sizes** ranging from 4 - 20oz
- ✓ **MOQ of 20,000 cups**
- ✓ Sustainably-sourced board, lined with **renewable plant-based PLA**
- ✓ Perfect for **hot drinks or soup** to go
- ✓ Compostable lids are also available
- ✓ **Printed using 2 colour Pantones or full colour CMYK.** The design and colour possibilities are endless!
- ✓ **Custom print one of our paper clutches** for an extra layer of heat protection



# COLD CUPS



- ✓ Available in a variety of **sizes** ranging from 5 - 20oz
- ✓ **MOQs** starting at 30,000 cups
- ✓ **Compostable lids** are also available
- ✓ **Made from PLA**, a renewable material made from plants
- ✓ **Perfect for** cold drinks, desserts, mini salads, or healthy snacks
- ✓ **Printed using coated pantones.** Up to 6 colours can be used per design



# FOOD CONTAINERS

Custom **PRINT**  
by **vegware** 

- ✓ Available in a variety of **sizes** ranging from 4 - 32oz
- ✓ **MOQs starting at 20,000**  
(Dependant on size)
- ✓ Compostable lids are also available
- ✓ **Perfect for both hot & cold food use.**  
From gelato servings to hot soups and one-pot meals, our soup containers can do it all
- ✓ Sturdy design, made from sustainably-sourced board, **lined with plant-based PLA**



# MOULDED FIBRE TAKEAWAY BOXES



- ✓ Available in a **variety of shapes and sizes**
- ✓ **Ink Coverage of up to 50%**
- ✓ Made from reclaimed natural fibre with **no added PFAS**
- ✓ Certified for **home and industrial composting**
- ✓ **Printed using full colour CMYK**
- ✓ **Doesn't trap condensation,** so hot food stays crispy
- ✓ **For hot or cold food to go** - street food, rice, salads, or even sweet treats



# WHAT DO OUR DISTRIBUTORS SAY?



*"The system is very simple and easy to use, and the team communicate with us to make sure that we get what we need"*



*"The finished product is always top quality and to a high standard. Our customers regularly come back for reprints and other products"*



We wanted to offer our customers a bespoke option for their environmentally friendly packaging. **Custom print is a great way for them to showcase their brand** and to reach their next stages in business growth.



*"I've used both the matt & gloss finish on bespoke cups for my customers and I have to say **the finished article is fantastic, both in quality and presentation**"*

# ...AND SO MUCH MORE!



| Product                        | Minimum order                                | Colours   | Lead time     |
|--------------------------------|--|---|---------------|
| Double wall hot cups           | 5,000  | Full colour CMYK  | 3 - 4 weeks   |
| Single wall hot cups           | 20,000                                       | Full colour CMYK / 2 pantones                           | 14 - 16 weeks |
| Corrugated cup clutches        | 50,000                                       | Full colour CMYK / 2 pantones                           | 14 - 16 weeks |
| Food / Ice cream containers    | 20,000 (4oz to 16oz)<br>50,000 (24oz & 32oz) | Full colour CMYK / 2 pantones                           | 14 - 16 weeks |
| Bon Appetit paper bowls & lids | 50,000                                       | 1 - 4 Pantones  | 14 - 16 weeks |
| Kraft food containers          | 50,000                                       | 1 - 4 Pantones  | 14 - 16 weeks |
| Food cartons                   | 15,000 (brown board)                         | 1 - 4 Pantones  | 6 - 8 weeks   |
| Sandwich wedges                | 50,000                                       | 1 - 6 Pantones<br>(on white & brown board)              | 3 - 4 weeks   |
| Salad boxes                    | 10,000 (brown board)                         | 1 - 4 Pantones  | 11 - 13 weeks |
| Pizza boxes                    | 5,000 (12in)<br>6,000 (9in)                  | 1 - 4 Pantones  | 8 - 10 weeks  |
| Premier burger boxes           | 6,000  | 1 - 4 Pantones  | 8 - 10 weeks  |
| Greaseproof sheets             | 1,000  | Full colour CMYK / 6 pantones                           | 4 - 12 weeks  |
| Standard PLA cold cups         | 30,000                                       | 1 - 6 Coated Pantones                                   | 14 - 16 weeks |
| Slim PLA cold cups             | 50,000                                       | 1 - 6 Coated Pantones                                   | 14 - 16 weeks |
| Paper cold cups                | 50,000                                       | 1 - 4 Pantones  | 14 - 16 weeks |
| Round deli containers          | 10,000                                       | 1 - 6 Pantones  | 14 - 16 weeks |
| Bella pots                     | 50,000                                       | 1 - 6 Pantones  | 14 - 16 weeks |
| Stickers                       | 6,000 (size dependant)                       | Full colour CMYK  | 3 - 5 weeks   |
| Napkins                        | 30,000 (33cm & 40cm)<br>60,000 (cocktail)    | 1 - 2 Pantones  | 3 - 5 weeks   |
| Paper carriers                 | 1,000  | Full CMYK or 1 - 4 Pantones<br>(on white & brown paper) | 9 - 11 weeks  |

| Product                           | Minimum order  | Colours   | Lead time     |
|-----------------------------------|--|---|---------------|
| Extra large paper carriers        | 15,750   | Full CMYK or 1 - 6 Pantones<br>(on white & brown paper) | 9 - 11 weeks  |
| Paper bags                        | 25,000 (With window)<br>25,000 (No window)<br>10,000 (Bloomer bag) | 1 - 4 Pantones  | 10 - 14 weeks |
| NatureFlex bags                   | 5,000  | 1 - 8 Pantones  | 8 - 10 weeks  |
| Glassine window bags              | 50,000   | 1 - 4 Pantones  | 9 - 11 weeks  |
| Therma bags/pouch                 | 40,000   | 1 - 4 Pantones  | 8 - 10 weeks  |
| Ovenable wrap                     | 64,000   | 1 - 2 Pantones  | 8 - 10 weeks  |
| Bagasse/moulded fibre products    | 100,000  | Full colour CMYK  | 14 - 16 weeks |
| Carry packs                       | 12,500   | 1 - 6 Pantones  | 5 - 7 weeks   |
| PLA portion pots                  | 30,000 (3oz and 4oz)   | 1 - 6 Pantones  | 14 - 16 weeks |
| Platter boxes                     | 10,000   | 1 - 5 Pantones  | 12-14 weeks   |
| Paper hot cup lids - 79/89 series | 100,000  | Full colour CMYK  | 14 - 16 weeks |
| Paper hot lids - 90/115 series    | 100,000  | Full colour CMYK  | 14 - 16 weeks |
| Cup carrier, handled              | 40,000   | 1 - 6 Pantones  | 7 - 9 weeks   |
| Brown Microflute boxes & trays    | 100,000  | 1 - 4 Pantones  | 6 - 7 weeks   |
| Chip scoop                        | 100,000  | Full colour CMYK / 2 pantones                           | 14 - 16 weeks |
| Paper cutlery packs               | 50,000   | 1 - 6 Pantones  | 14 - 16 weeks |
| Wooden cutlery packs              | 125,000 (cutlery kit)<br>250,000 (wrapped individual cutlery)      | 1 - 4 Pantones  | 14 - 16 weeks |
| Paper straws                      | 200,000 (1 colour non-continuous)<br>250,000 (Process colours)     | 1 - 4 Pantones  | 3 - 4 weeks   |

# FAQ



## Are custom printed products compostable?

Yes. As with all Vegware, our custom print products can be commercially composted where accepted.

## What do I need to provide for a custom print product?

We need your logo and any additional text and artwork elements you may want included. We ideally require these in a vector format, however, depending on the product, we may be able to use high resolution jpegs (300dpi or higher). Please include instructions if you have a specific idea in mind for your artwork. **If you order through one of our distributor partners, please send this information directly to them.**

## How much do you charge to put artwork together?

**Our Creative team will spend up to an hour on a custom print request** and, if needed, can amend the design based on your feedback. Over and above this first free hour, we will charge a flat rate for each additional amendment.

## What happens once my artwork has been created?

We will send you a digital proof of your artwork so that you can approve the colours, sizing and positioning before it goes to print.

[Enquire now](#)

## What types of finish are available for double wall hot cups?

We can print on either matt or gloss board, depending on your preference. Matt board is slightly textured and is similar in finish to recycled paper. Gloss board is smooth and shiny, ideal if you want your colours to be more vivid.

## Can I design my own custom print artwork?

Yes! If you would like to design your own custom printed products and have access to Adobe software, please get in touch so that we can supply you with the correct templates and guidelines.

If you order through one of our distributor partners, please contact them directly for this information.

## What file formats do you work with?

If you are providing your own artwork, we accept Adobe Illustrator (.ai), editable .pdfs or .eps files.

## How long will it take for me to receive my custom printed product?

Exact timing can vary based on the product, design and quantity ordered. Please contact our Customer Service team who can provide a more detailed timeline.





+44 (0)330 223 0400 | [sales@vegware.com](mailto:sales@vegware.com)

**[Vegware.com](https://vegware.com)**