

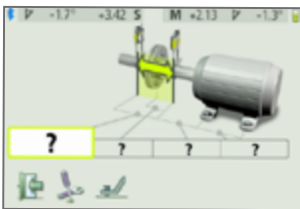
Fixturlaser ECO

The Fixturlaser ECO is an affordable precision instrument created specifically for horizontal shaft alignment. In addition to providing Fixturlaser's industry-leading ease-of-use, the ECO comes with wireless sensor units, a 4" color display, rechargeable batteries and an IP65-certified design that can withstand harsh environments.

Fixturlaser ECO Features:

- Integrated Bluetooth
- Lifetime Warranty
- Pre-mounted sensors
- 4" Full-Color Screen
- Screen Flip
- Verti-Zontal Compound Move
- 8 hours battery time, continuous use
- CCD sensors technology
- Live values during adjustment
- IP65 classified
- Slim sensor units

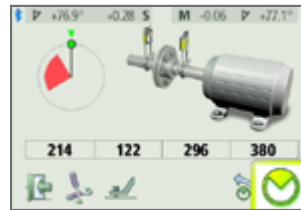
The ECO has Fixturlaser's market-leading adaptive user interface.



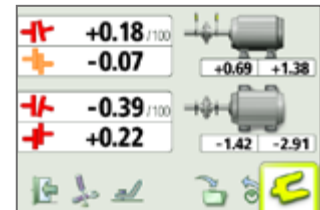
Enter the dimensions.



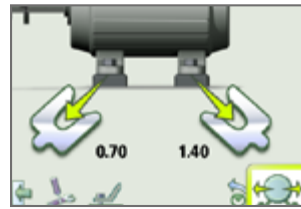
Rotate the sensors to the first position and press the measurement icon.



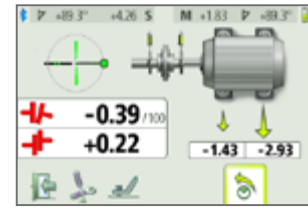
Rotate the sensors to the second position. Press the measurement icon again to take the second measurement.



Rotate the sensors to the third position and measure. The results will be displayed on screen. Press the shim icon.



Correct vertically then press the "live reading icon"...





What`s included:

1 pcs Fixturlaser DU ECO, 1 pcs Fixturlaser M6, 1 pcs Fixturlaser S6, 2 pcs V-bracket complete with chain, 1 pcs Tape measure 5 m, 1 pcs Power Supply 4 USB-port 5 VDC, Ext power cable EUR/US 2 m, 2 pcs Universal tool, 2 pcs USB-cable A-mini B 0,5 m black, 2 pcs USB-cable A-micro B 1,5m black

Fixturlaser eco - complete system

Weight (incl. all standard parts): 4,8 kg (10,6 lbs)

Display Unit

Weight	0.36 kg (12,8 oz)
Dimensions	181 mm x 106 mm x 34 mm (7,1 in x 4,2 in x 1,3 in)
Noise	< 0.25 ppb
Environmental protection	IP 65
Display size:	4" (102mm) diagonal (84 x 56 mm, 3,3 x 2,2 in)
Operating time:	8 hours continuous use

Td units

Weight	M6 200 g (7,5 oz) S6 188 g (6,6 oz)
Environmental Protection:	IP 65
Measurement Distance:	Up to 3 m
Detector:	Digital line sensor
Detector Length:	20 mm (0.8 in)

Detector Resolution: 1% ± 1 digit

Measurement Accuracy: 1% ± 1 digit

Adaptive User Interface

This innovative interface guides the user throughout the measurement and alignment process and is based on icons and symbols - eliminating any language barriers.

Verti-Zontal Compound Move

Verti-Zontal Compound Move is a revolutionary time-saving feature, using live screen values to achieve an alignment in just one or two moves. This proprietary function is available only on Fixturlaser products.

Pre-mounted sensors

The precision-laser heads come pre-mounted on their fixtures, ready for the most common setup.

