



Water Product Portfolio

WATER INSTRUMENTS & SYSTEMS



DISSOLVED OXYGEN

CONDUCTIVITY

TOTAL DISSOLVED SOLIDS (TDS)

RESISTIVITY

SALINITY

DENSITY

PH

OXIDATION REDUCTION POTENTIAL (ORP)

TEMPERATURE

DEPTH / LEVEL / PRESSURE

AMMONIUM

AMMONIA

CHLORIDE

FLUORIDE

NITRATE

CALCIUM

TURBIDITY

CHLOROPHYLL

FRESHWATER BLUE-GREEN ALGAE

MARINE BLUE-GREEN ALGAE

RHODAMINE WATER TRACING (WT) DYE

REFINED OIL

COLOURED DISSOLVED ORGANIC MATTER (CDOM)

FLOURESCENT DISSOLVED ORGANIC MATTER (FDOM)

SUSPENDED SOLIDS

TOTAL DISSOLVED GAS

BIOLOGICAL OXYGEN DEMAND (BOD)

CHEMICAL OXYGEN DEMAND (COD)

DISSOLVED ORGANIC CARBON (DOC)

TOTAL ORGANIC CARBON (TOC)

PHOTOSYNTHETICALLY ACTIVE RADIATION (PAR)

*NATA accredited facilities & services comply with the requirements of ISO/IEC 17025:2005 and includes testing laboratories, calibration laboratories & blast monitoring services



Acoem Water Product Portfolio

Instruments & Systems



AUTOMATIC SAMPLERS

- MAXX portable & stationary samplers
- MAXX wall mounted samplers
- MAXX 12 VDC samplers with active & passive cooling
- MAXX stainless steel housing samplers suitable for hazardous areas
- MAXX desert first flush samplers



MONITORING SYSTEMS

- Mobile monitoring stations
- Combined sampler and WQ stations
- Buoy mounted monitoring stations
- Groundwater Remote Area Monitoring Station (GRAMS)
- Flow and flood level stations



PROBES, SONDES & TRANSMITTERS

- Aquaread multi-parameter sondes
- Aquaread sonde loggers



ONLINE ANALYSERS

- Tethys UV300 low cost monitor
- Tethys UV500 multi-parameter analyser
- Heavy metals analyser
- Process analysers



FLOW / LEVEL / PRESSURE

- Hydrovision radar flowmeters
- Hydrovision flow profiler
- Hydrovision acoustic flowmeter
- Aquaread level sensors

Automatic Samplers

MAXX MINI SAMPLERS

The MAXX TP6 Series is an ultra-compact and lightweight automatic water sampler available in either peristaltic or vacuum-pump options. The TP6 is an unrivalled measuring device for volume determination. Highly accurate sample volume measurement with easy cleaning, modern and ergonomic design.

MAXX 12 VDC REFRIGERATED SAMPLERS

The TP5 C is a compact water sampler with integrated distributor, and diverse bottle options from composite to discrete. Comes with an insulating base with either refrigerated or non-refrigerated cooling.

MAXX STATIONARY SAMPLERS

Fixed site sampler in plastic or stainless steel housings, especially suited for high ambient temperatures. For automatic sample extraction according to the vacuum or peristaltic principle. Mains operation.

Other options available:

- Self-emptying sampler
- High-pressure sampler (>20 bar).





MOBILE MONITORING STATIONS

For mid length but non-permanent monitoring, Acoem's mobile WQMS is an ideal solution. Capable of being deployed in 30 minutes, the station is equipped with a WQ sonde with up to 15 parameters as well as optional individual sensors for solids or depth. Solar powered, with data logging up to 2 years and remote telemetry (3G or radio modems), the station can provide data indefinitely without the need for infrastructure support. For when the job calls for something between a portable handheld and a permanent station.

COMBINED SAMPLER & WQ STATIONS

Engineered to be rugged, secure and low maintenance the Acoem Water Quality Sampling Station is the ideal system to measure and sample water discharge or runoff. The station has been designed for those who need to measure the non-standard (lab analysed) parameters during a rain or discharge event and don't want to rely on field technicians taking manual samples. Combining in-situ monitoring and automatic sampling, this system automates collection and notifies when an exceedance occurs or a sample is collected.

BUOY MOUNTED MONITORING STATIONS

A complete Water Quality Monitoring Station built on a buoy platform. Solar powered, with data logging up to 2 years and remote telemetry (3G or radio modems) the station can provide data indefinitely without being tied to specific locations. Ability to add beacons, weather sensors, navigational aids and many more options.

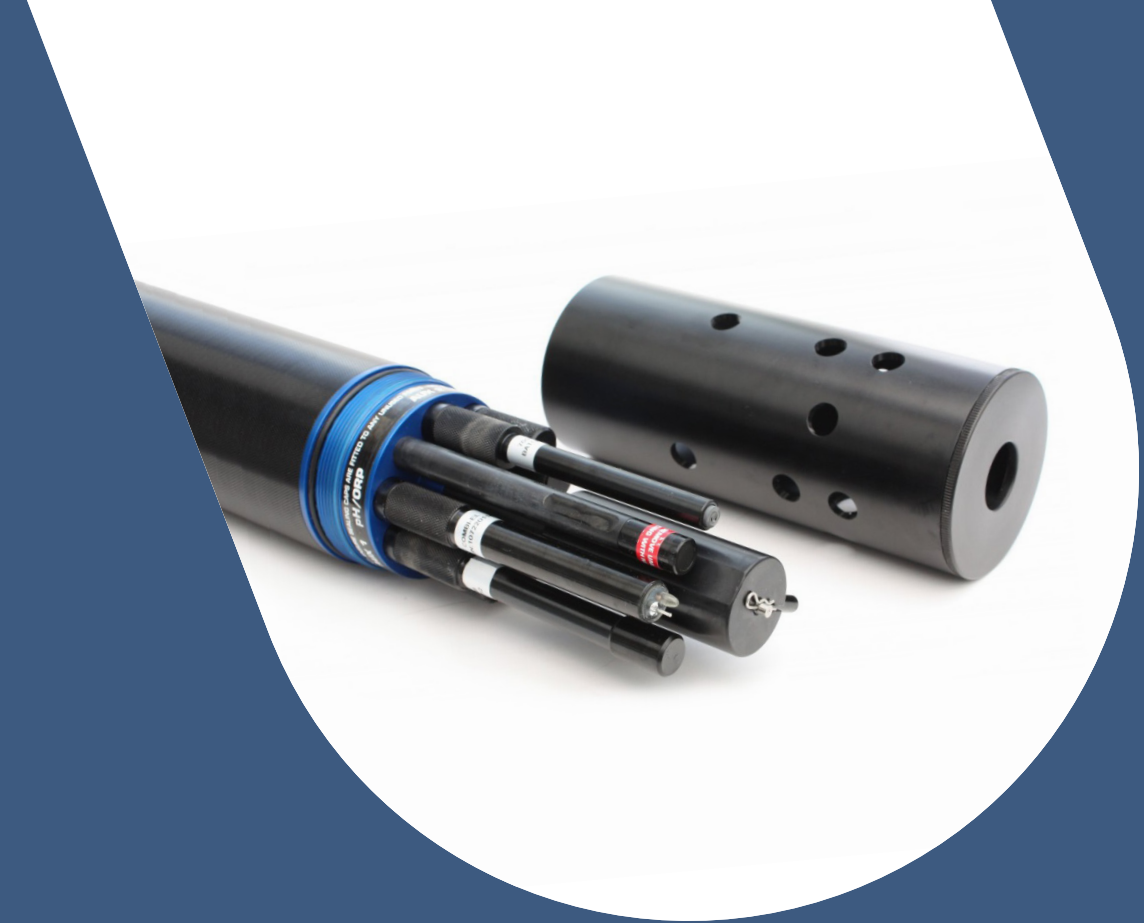
GROUNDWATER REMOTE AREA MONITORING STATION (GRAMS)

Solar-powered bore water monitoring station, designed to monitor the bore water composition using a WQ probe measuring up to 15 parameters. The Sonde is connected to an interface device with SDI-12 to a data logger with up to 2 years storage.

The solar power system is capable of 5 days backup. Data from the station is downloaded remotely via the 3G or radio modem.

FLOW & FLOOD LEVEL STATIONS

Flow and flood level stations are critical for creeks and streams subjected to flooding during rain events. Our monitoring stations provide real-time data and alerting from sensors connected to these stations. Powered by solar and battery backup these stations are autonomous and will alert key stakeholders of impending flooding and provide critical information for mine site discharge or community alerts.



Probes, Sondes & Transmitters

AQUAPROBE MULTI-PARAMETER SONDES

Aquaprobe sonde packages are ideal if you are new to water quality monitoring or a seasoned integrator and user. They provide measurements for all of the commonly monitored parameters through to CDOM, Nitrates and chlorophyll (25 measurements total). Aquaprobes come fitted with base parameters of pH/ORP, Electrical Conductivity, Dissolved Oxygen and temperature. Cable lengths are available from 3 - 50+ metres. SDI-12 or Modbus module supplied as option for output to 3rd party devices or log data on the handheld GPS Aquameter or field Aqualogger.



DISSOLVED OXYGEN

The S423/C/OPT probe is used for the optical measurement of oxygen in pure and process waters. The principle of measurement is based on the effect of dynamic luminescence quenching by molecular oxygen. Provided in a stainless body, the DO probe has no moving parts, is reliable and easy to maintain and has a Modbus output for 3rd party controllers or loggers.



Online Analysers

TETHYS UV300 LOW COST MONITOR

The UV300 is a cost effective water analyser for applications focused on one or two parameters. UV spectroscopy is well known for its stability and low operating cost. With this technology the UV300 can measure parameters like organic matter, Nitrate, Colour, Aromatics Hydrocarbons (PAH). Complementary modules allow the measurement of PO₄, Cl₂, NO₂, Fe, Al by colorimetric method and Turbidity by laser diode. External probes can be added for physicochemical parameters like pH, ORP, Dissolved Oxygen (DO) and Conductivity.



TETHYS UV MULTI-PARAMETER ANALYSER

The UV500 is an online water analyser based on a high resolution UV-visible spectrograph. It allows the simultaneous monitoring of many different parameters for waste water treatment plants or river monitoring stations with excellent stability and low operating cost.

Along with PO₄, Cl₂, NO₂, Fe and Al, this analyser is also capable of measuring:

- H₂S
- Colour
- Nitrate
- Ammonia
- pH / ORP
- Turbidity
- Phosphate
- UV₂₅₄-COD
- Conductivity
- Hydrocarbons
- Dissolved Oxygen (DO).



Flow / Level / Pressure

HYDROVISION: Q-EYE MILL

The HydroVision Q-Eye Mill is a portable flow meter for pipes or open channels. It is designed for applications in full or partially full pipes 100 - 200 mm in diameter, or open channels with flow depth 40 - 2000 mm.

The submergible depth and velocity sensor which measures only 15 x 25 x 108 mm is the smallest sensor of this type currently available.

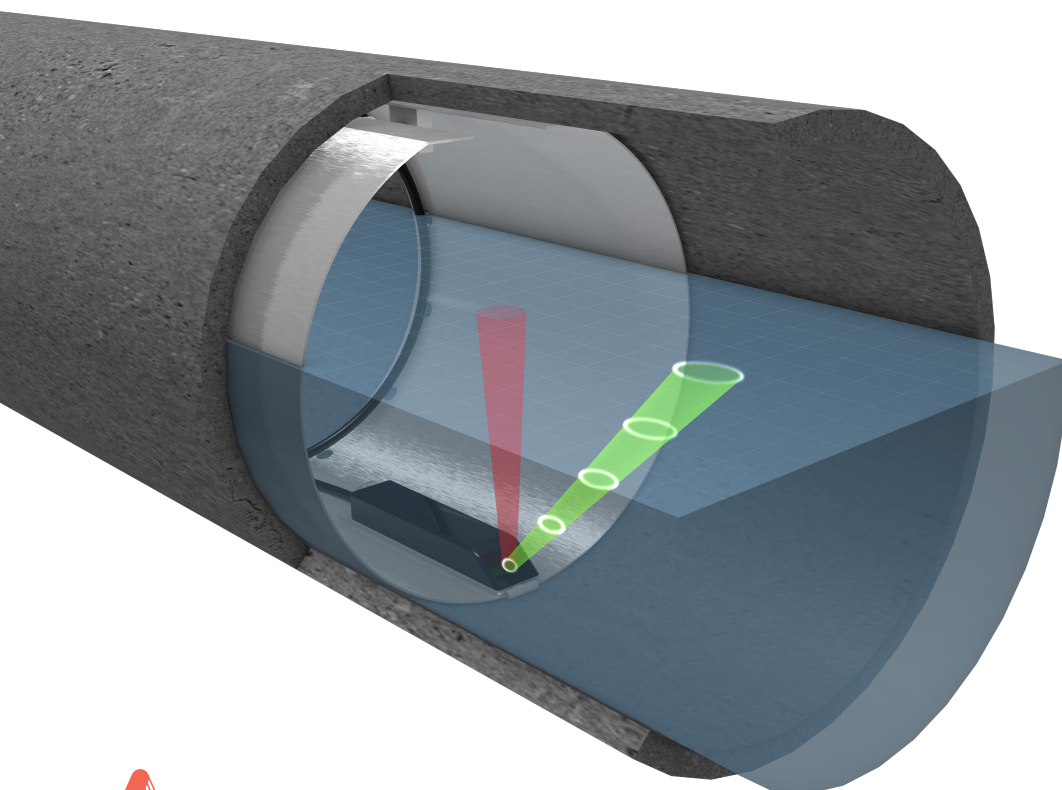
HYDROVISION Q-EYE PSC MT

The HydroVision Q-Eye PSC MT is a stationary flow meter for pipes and open channels. It uses advanced Doppler profiling technology to directly measure velocity profiles, making it the best choice for sites with non-uniform, rapidly changing, backwatered, near zero, negative or reverse flow conditions.

The submergible depth and velocity sensor which measures only 15 x 25 x 108 mm is the smallest sensor of this type currently available.

HYDROVISION Q-EYE RADAR MT

The HydroVision Q-Eye RADAR MT is a non-contact channel flow meter. It consists of a radar-based velocity sensor and an ultrasonic or radar-based water level sensor.



DISSOLVED OXYGEN

CONDUCTIVITY

TOTAL DISSOLVED SOLIDS (TDS)

RESISTIVITY

SALINITY

DENSITY

PH

OXIDATION REDUCTION POTENTIAL (ORP)

TEMPERATURE

DEPTH / LEVEL / PRESSURE

AMMONIUM

AMMONIA

CHLORIDE

FLUORIDE

NITRATE

CALCIUM

TURBIDITY

CHLOROPHYLL

FRESHWATER BLUE-GREEN ALGAE

MARINE BLUE-GREEN ALGAE

RHODAMINE WATER TRACING (WT) DYE

REFINED OIL

COLOURED DISSOLVED ORGANIC MATTER (CDOM)

FLOURESCENT DISSOLVED ORGANIC MATTER (FDOM)

SUSPENDED SOLIDS

TOTAL DISSOLVED GAS

BIOLOGICAL OXYGEN DEMAND (BOD)

CHEMICAL OXYGEN DEMAND (COD)

DISSOLVED ORGANIC CARBON (DOC)

TOTAL ORGANIC CARBON (TOC)

PHOTOSYNTHETICALLY ACTIVE RADIATION (PAR)

About Acoem

At Acoem, we create environments of possibility – helping organisations find the right balance between progress and preservation – safeguarding businesses and assets, and maximising opportunities while conserving the planet’s resources. We deliver unrivalled, interoperable AI-powered sensors and ecosystems that empower our customers to make enlightened decisions based on accurate information.

Together with 220 distributors, our 850+ employees work across 26 offices, 6 manufacturing facilities and 5 R&D centres in 9 countries, to provide trusted, holistic data solutions for customers worldwide.

Acoem links possibilities with protection.

For more information visit acoem.com.au



Acoem Australasia (Ecotech Pty Ltd)
1492 Ferntree Gully Road
Knoxfield VIC 3180
Melbourne Australia
+61 3 9730 7800 | email@acoem.com
acoem.com.au