

The Trolley Stop

DATA SHEET

1800
True Access
Grille

Solid Wood

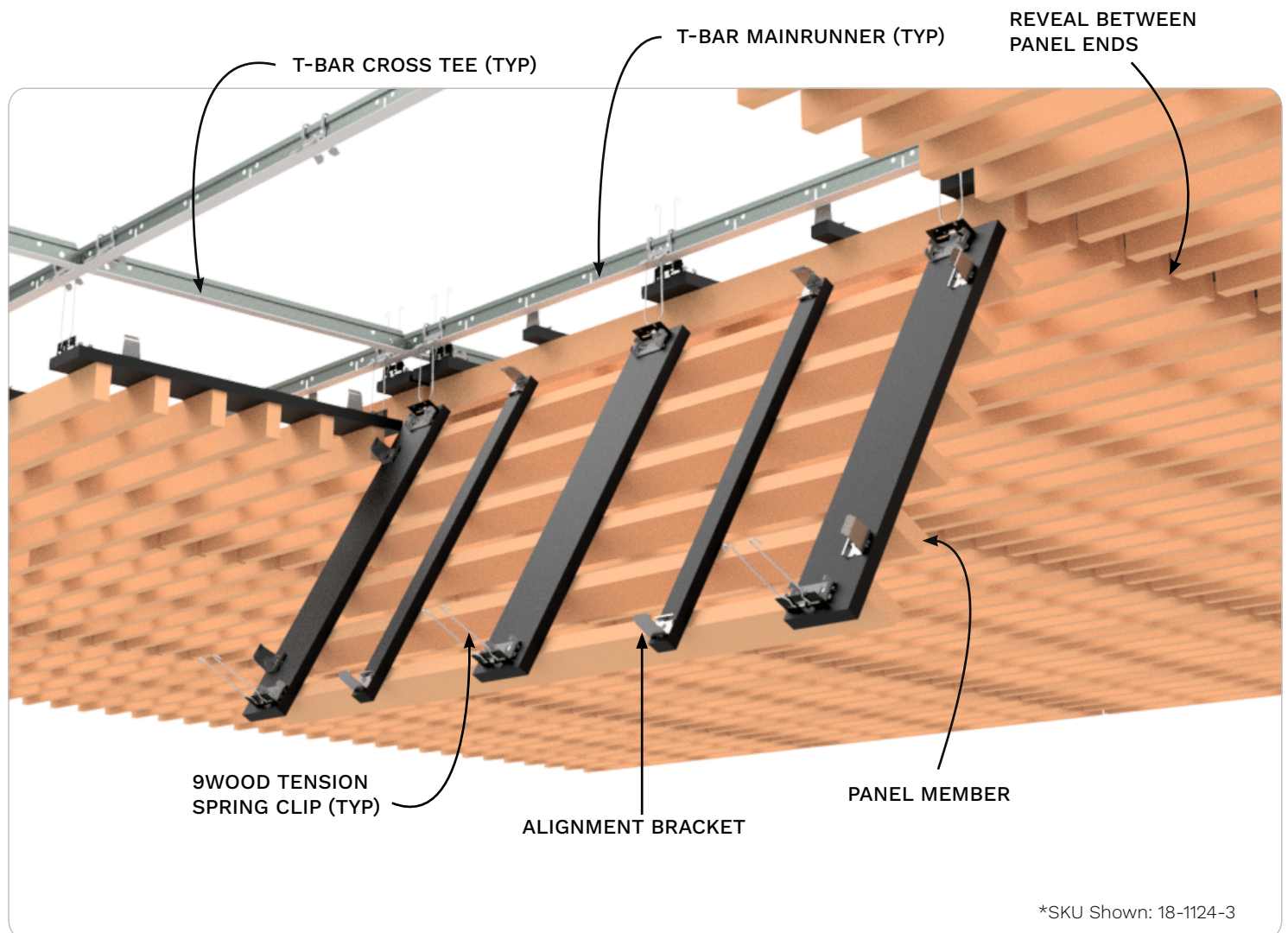


1800 | TRUE ACCESS GRILLE | SOLID WOOD

The **9Wood True Access Grille** wood ceiling offers a design where the individual wood member is deeper than it is wide. The solid wood panel width is 24", with lengths ranging from 2' to 12' in 1' increments.

Attachment for the True Access Grille is via 9Wood's Tension Spring Clip and Spring Holster.

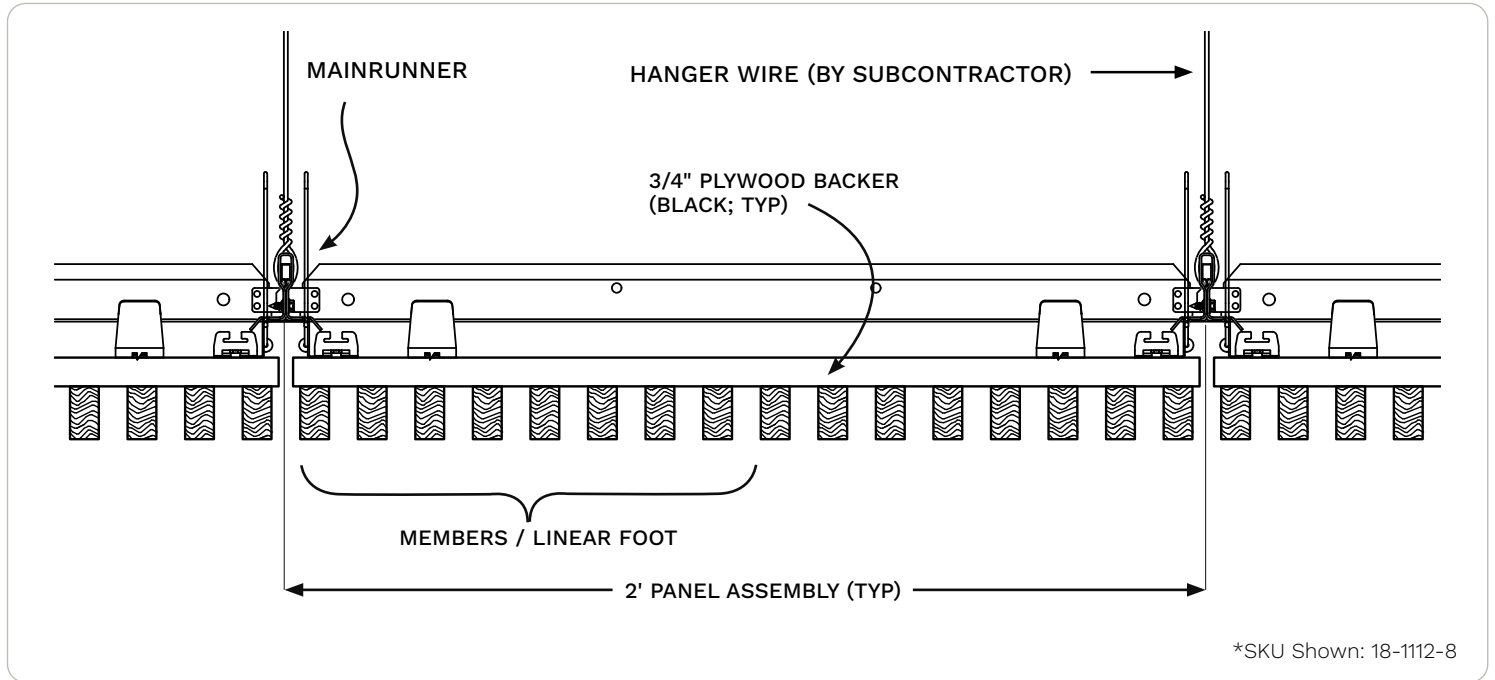
This is a **fully, downward accessible** system, with pull down, spring release accessibility.



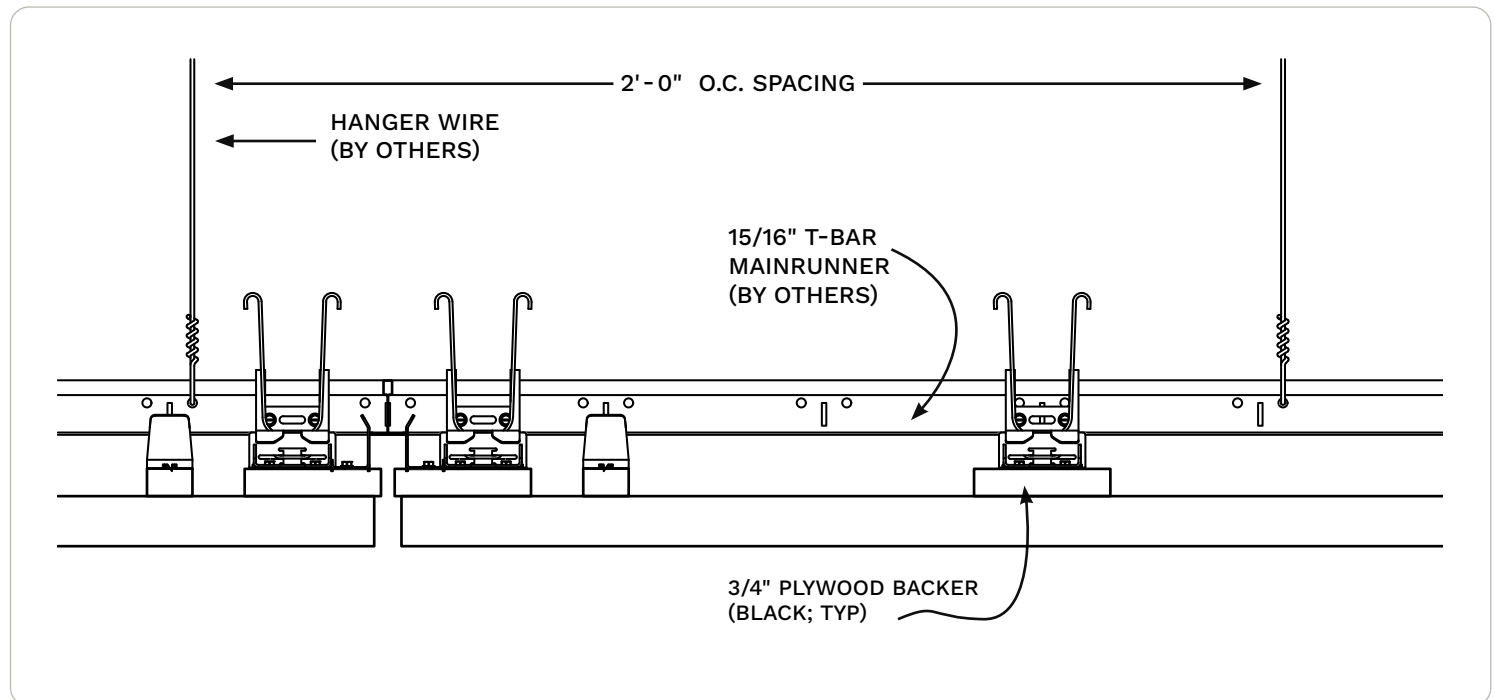
TRUE ACCESS GRILLE | Typical Specifications



Typical Specifications



Suspension Conditions



TRUE ACCESS GRILLE | SKU Table



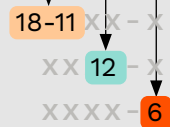
How to build your SKU

- **Prefix for style.** Start with 18-1100 for True Access Grille.
- **Pick your member size** (Rows). This gives you the next two digits (e.g., 18-1112).
- **Pick your density** (Columns). This is the number of wood members per foot.
- **Combine them with a dash.** A 1 x 2 member with 6 members per foot creates SKU 18-1112-6.

SKU Decoder

Example: 18-11 12 - 6

- Style "18-1100 True Access Grille"
- Member Size "1 x 2 Nominal"
- Density "6 Members / LF"



SKU Table

Member Size (Nominal)	Width	Depth	Density (Members per Linear Foot)						
			2	3	4	5	6	7	8
1 x 2	3/4"	1 3/8"	18-1112-2	18-1112-3	18-1112-4	18-1112-5	18-1112-6	18-1112-7	18-1112-8
1 x 3	3/4"	2 1/4"	18-1113-2	18-1113-3	18-1113-4	18-1113-5	18-1113-6	18-1113-7	18-1113-8
1 x 4	3/4"	3 1/4"	18-1114-2	18-1114-3	18-1114-4	18-1114-5	18-1114-6		
1 x 6	3/4"	5 1/4"	18-1116-2	18-1116-3	18-1116-4	18-1116-5			
2 x 3	1 3/8"	2 1/4"	18-1123-2	18-1123-3	18-1123-4	18-1123-5	18-1123-6		
2 x 4	1 3/8"	3 1/4"	18-1124-2	18-1124-3	18-1124-4	18-1124-5			

Additional width, depth, and M/LF options may be available. Please check with 9Wood if you don't see the combination that you have in mind.

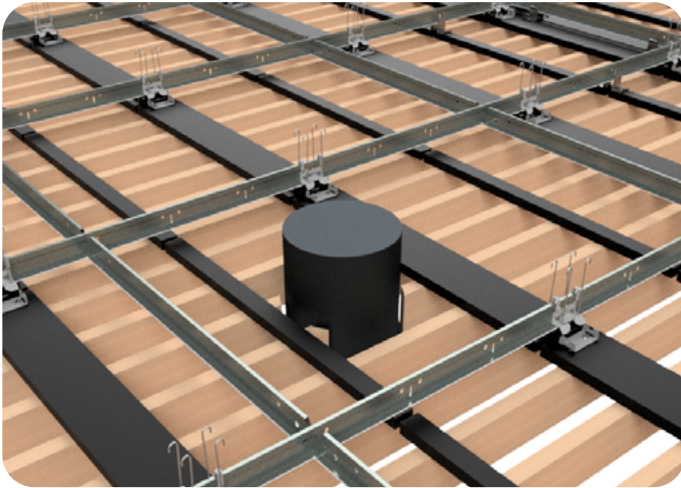
TRUE ACCESS GRILLE | Lighting Integration Guidance



Key Points

- All fixtures **must** be independently supported.
- Cut panels may require supplemental reinforcement.
- 9Wood is here to help

Downlight Examples

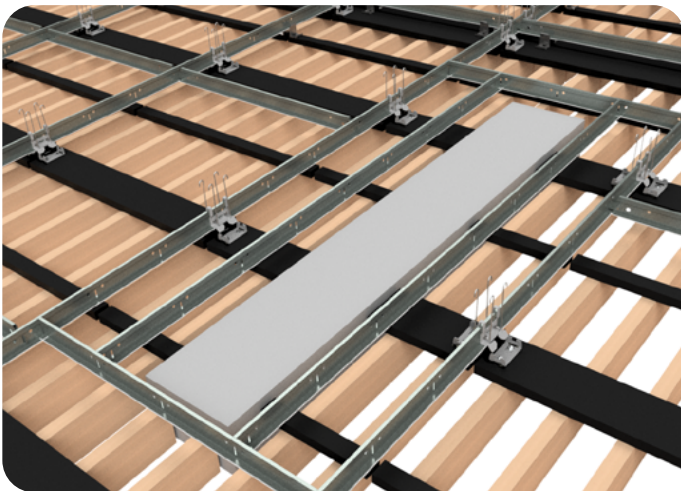


Fixtures must be independently supported. Lighting is always mounted to structure or T-Bar, not to wood members or clips.

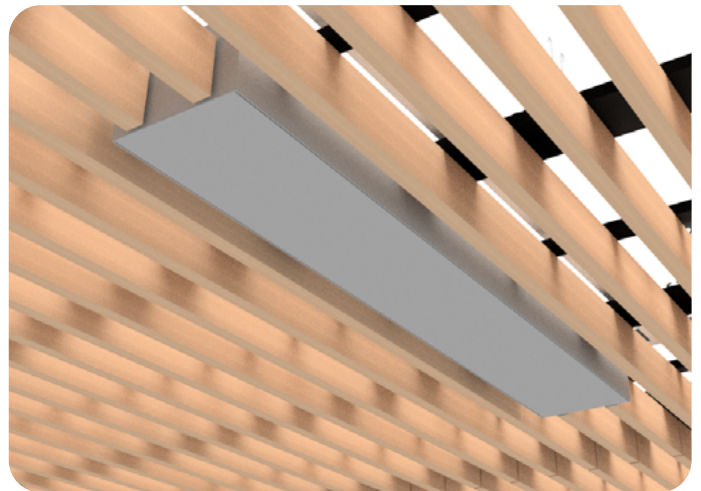


Integrate Downlights, cut precise openings in slats and add trim rings for downlights when cutting slats.

Linear Lighting Examples



Direct Mount to T-Bar options use clips or brackets to attach lighting fixtures securely. Cut panels may require supplemental reinforcement.



Integrate Linear Lighting by running fixtures parallel to the wood slats and coordinating dimensions with the slat reveals.

SPECIES OPTIONS | Solid Wood



Species Options

Custom Made Fast is available in three solid wood species. Mixed Grain Western Hemlock is recommended for most applications due to its cost efficiency, versatility, and visual consistency. White Oak is available only in 1x2 and 1x3 members. Douglas Fir availability is limited and subject to market volatility.

[See All Species Options on 9Wood.com](#) →

Finish & Color Options

All products are finished with a clear matte topcoat, regardless of stain color. Standard stain colors are available with Western Hemlock. Custom Color Matching is always available with no required minimums and at the same cost as Standard options. Send 9Wood a control sample to get started.

[See Standard Stains on 9Wood.com](#) →



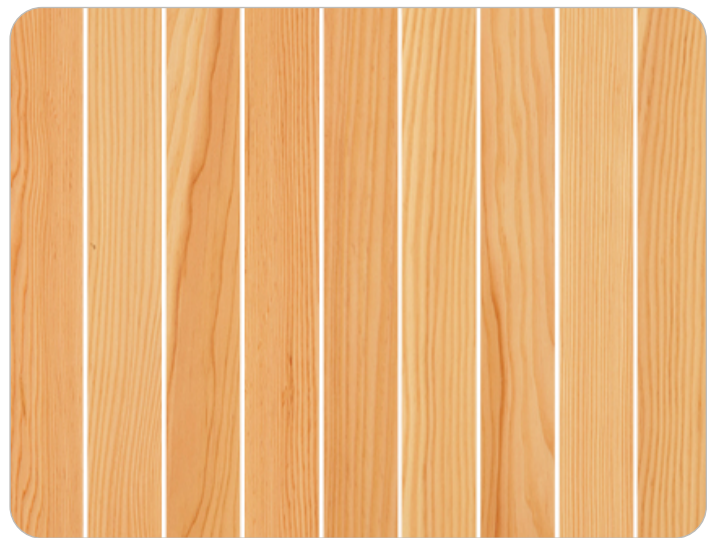
Western Hemlock
Mixed Grain



Western Hemlock
Vertical Grain



White Oak
Mixed Grain



Douglas Fir
Mixed Grain



Application

The True Access Grille uses a pre-assembled panel fabrication process. This product can be installed throughout the country and is the preferred design in areas requiring full ceiling toolless access. This is an accessible system, with pull down, spring release accessibility.

Acclimatization

True Access Grilles must be cared for in a controlled interior environment (RH 25%-55% max; temp. 60°-80°) and installed only after reaching equilibrium moisture content.

Acoustics

The True Access Grille can enhance acoustics via sound absorbing material placed over open reveals within the T-Bar grid. Insulation is typically provided locally. Specifiers should search within CSI MasterFormat Division 09 and Division 23, including:

- 09 81 00 Acoustical Insulation
- 09 84 00 Acoustical Wall/Ceiling Elements
- 23 07 00 HVAC Insulation

Fire Rating

Individual members are treated with a Fire Retardant that helps it meet Class A per ASTM E84.

LEED

True Access Grilles may help contribute to LEED credits for: Material sourcing, Material ingredients, Low Emitting Materials, and Environmental Product Declarations. Credit support based on design choices, please contact 9Wood for more information.

MEP

The True Access Grille permits MEP penetrations in the ceiling's surface. Cut panels may require supplemental reinforcement and may render the panel inaccessible. Fixtures and diffusers must be independently supported.

Seismic

True Access Grilles provide seismic code compliance by means of mechanical direct screw attachment to T-Bar via the cross piece backer. Please consult local code or a licensed engineer for any additional requirements.

Suspension

True Access Grilles are clipped onto 15/16" heavy duty T-Bar main runners. Main runners are typically 2' on center, depending on panel weight.

System Weight

True Access Grilles typically weigh 2-4 pounds per square foot, depending on members per linear foot and species.



Custom
made fast

9wood.com

999 South A Street
Springfield, OR 97477
Tel: 888-767-9990
sales@9wood.com

This information is for illustrative purposes only. The featured products and processes are specific to the project and should not be duplicated without consulting 9Wood. © 2025 9Wood