



ood Outreach Access to Health
a Health Center

DATA SHEET

2400
Tongue and
Groove Linear

Solid Wood



2400

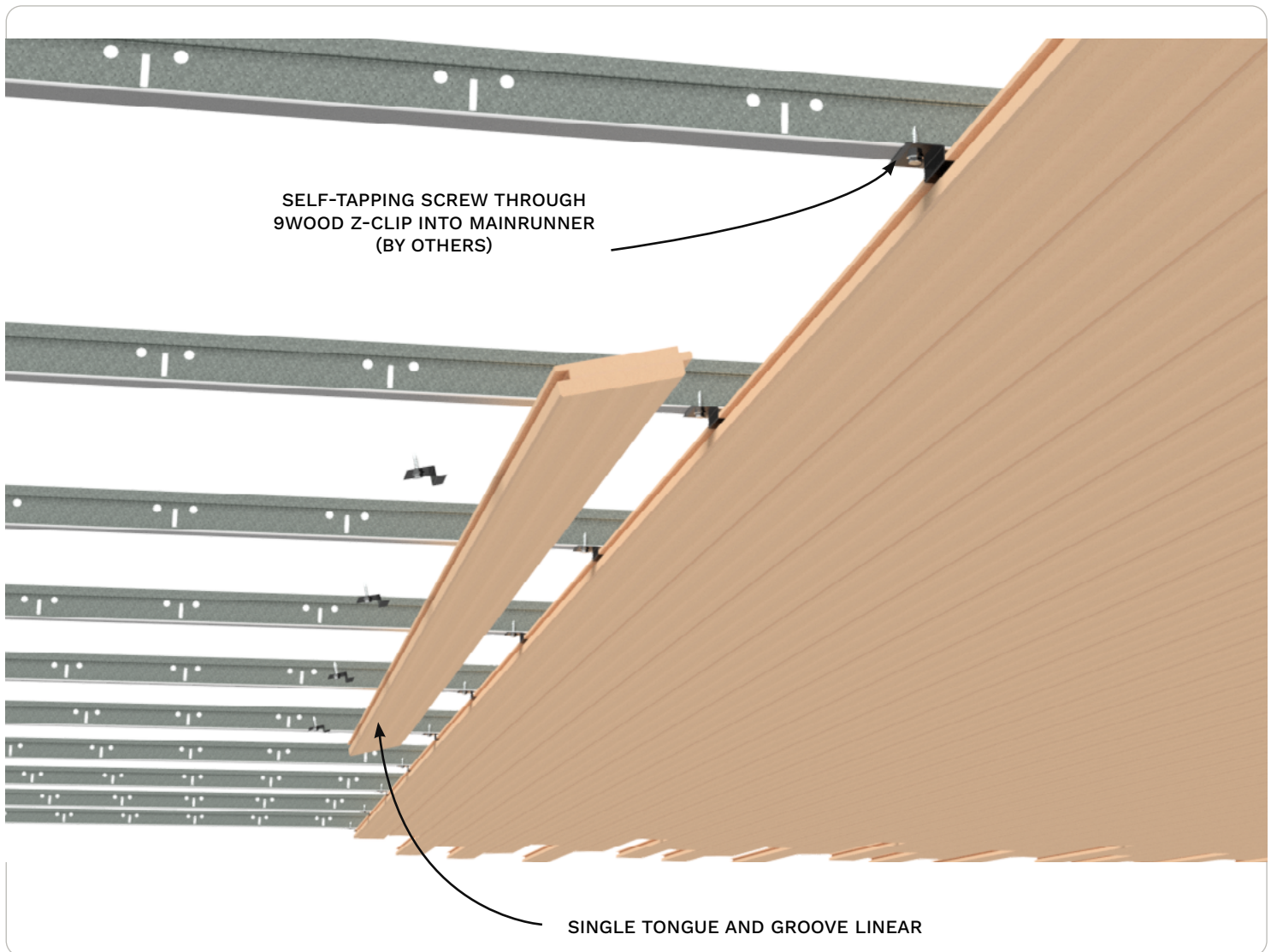
TONGUE AND
GROOVE LINEAR

SOLID
WOOD

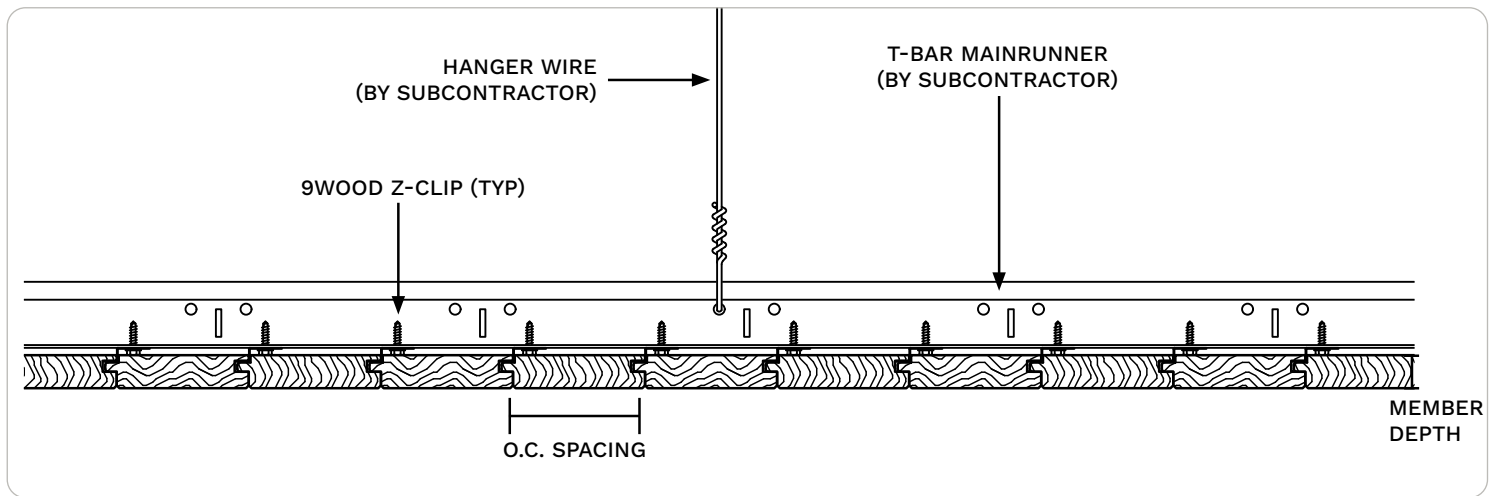
The 9Wood Tongue and Groove Linear style wood ceiling offers the classic linear ceiling design where the individual wood members abut with a “V” groove accenting the edge-to-edge joint. Members are installed randomly

to create a continuous look. Random panel lengths range from 4’ - 10’.

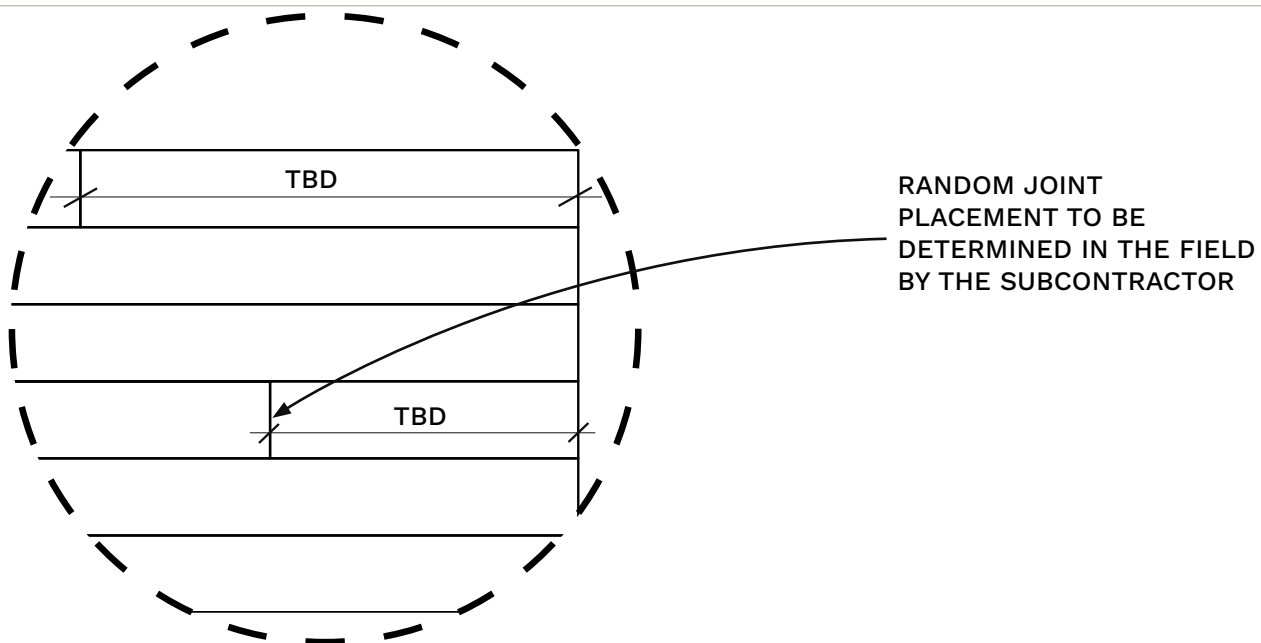
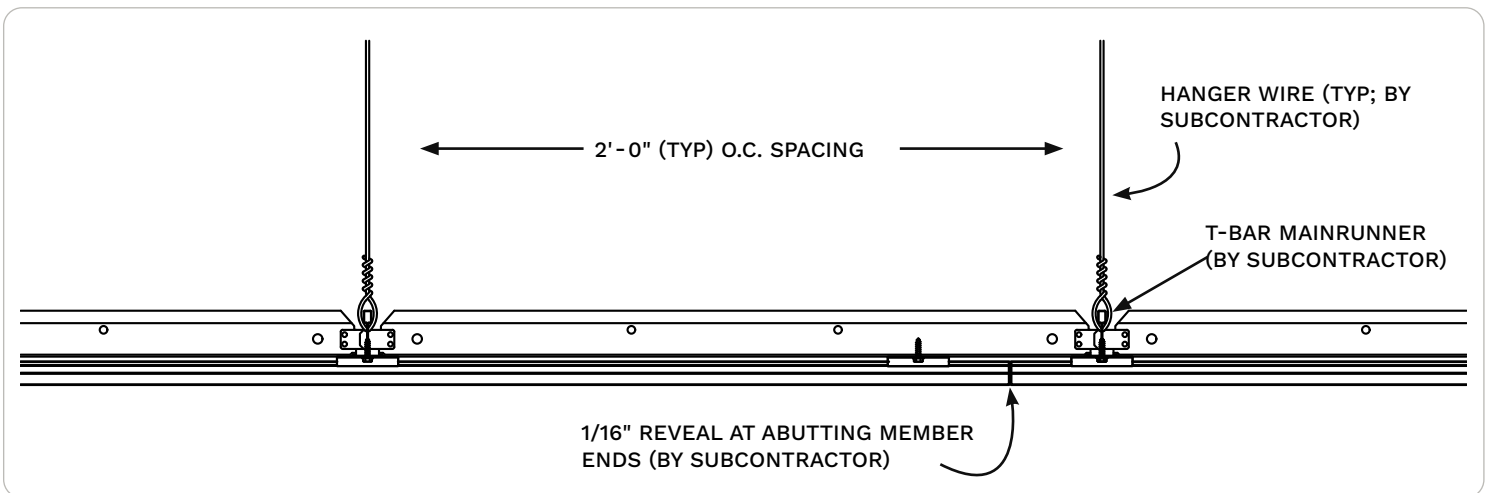
Attachment for the Tongue and Groove Linear is via progressive install, utilizing the 9Wood Z-Clip.



TONGUE AND GROOVE LINEAR | Typical Specifications



Perimeter Conditions and Suspension



TONGUE AND GROOVE LINEAR | SKU Table



SKU Decoder

Example: 24 14 - 4

- Style "2400 T&G Linear" x 24 XX - X
- Member Size "1 x 4 Nominal" XX 14 - X
- Density "4 Members / LF" XXXX - 4

SKU Table

SKU	Member Size (Nominal)	Member Width	Member Depth	O.C. Spacing	Members / LF
2314-4	1 x 4	3 1/4"	3/4"	3"	4
2316-3	1 x 6	5 1/4"	3/4"	5"	3

Additional width, depth, and M/LF options may be available. Please check with 9Wood if you don't see the combination that you have in mind.

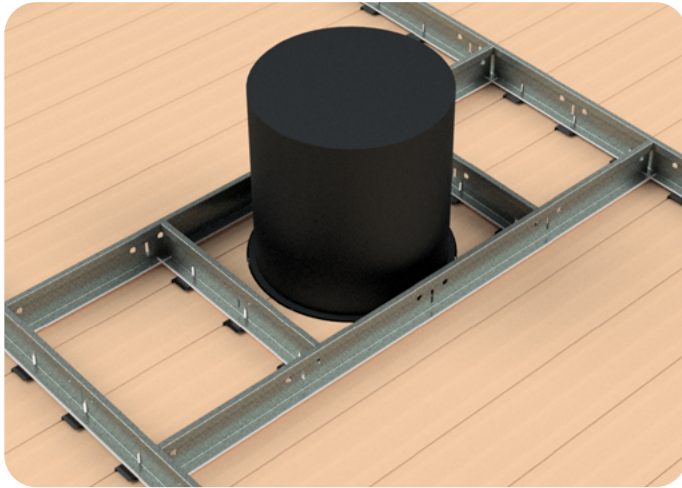
TONGUE AND GROOVE LINEAR | Performance



Key Points

- All fixtures **must** be independently supported.
- Cut panels may require supplemental reinforcement.
- 9Wood is here to help

Downlight Examples

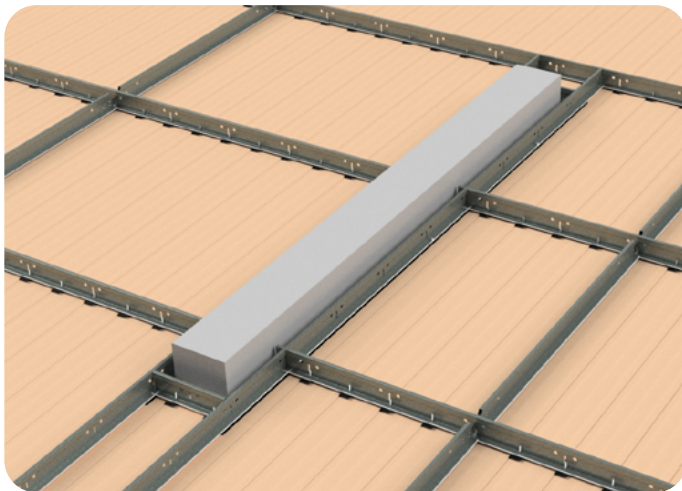


Direct Mount to T-Bar options use clips or brackets to attach lighting fixtures securely. Cut panels may require supplemental reinforcement.

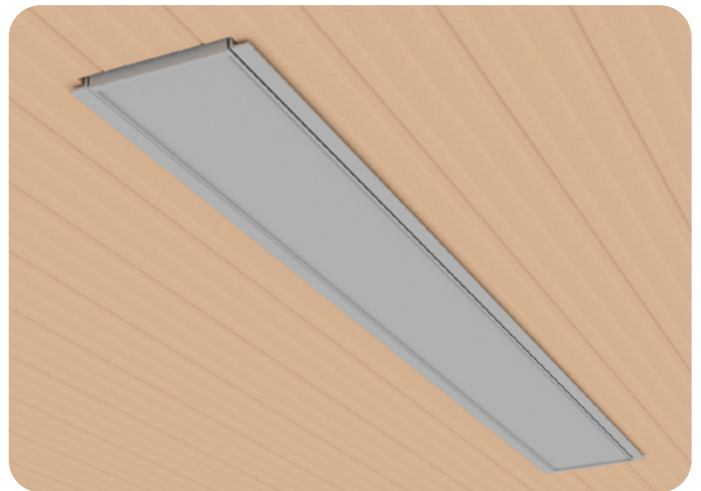


Integrate Downlights, cut precise openings in slats and add trim rings for downlights when cutting slats.

Linear Lighting Examples



Fixtures must be independently supported. Lighting is always mounted to structure or T-Bar, not to wood members or clips.



Integrate Linear Lighting by running fixtures parallel to the wood slats and coordinating dimensions with the slat reveals.

SPECIES OPTIONS | Solid Wood



Species Options

Custom Made Fast is available in three solid wood species. Mixed Grain Western Hemlock is recommended for most applications due to its cost efficiency, versatility, and visual consistency. White Oak is available only in 1x2 and 1x3 members. Douglas Fir availability is limited and subject to market volatility.

[See All Species Options on 9Wood.com](#) →

Finish & Color Options

All products are finished with a clear matte topcoat, regardless of stain color. Standard stain colors are available with Western Hemlock. Custom Color Matching is always available with no required minimums and at the same cost as Standard options. Send 9Wood a control sample to get started.

[See Standard Stains on 9Wood.com](#) →



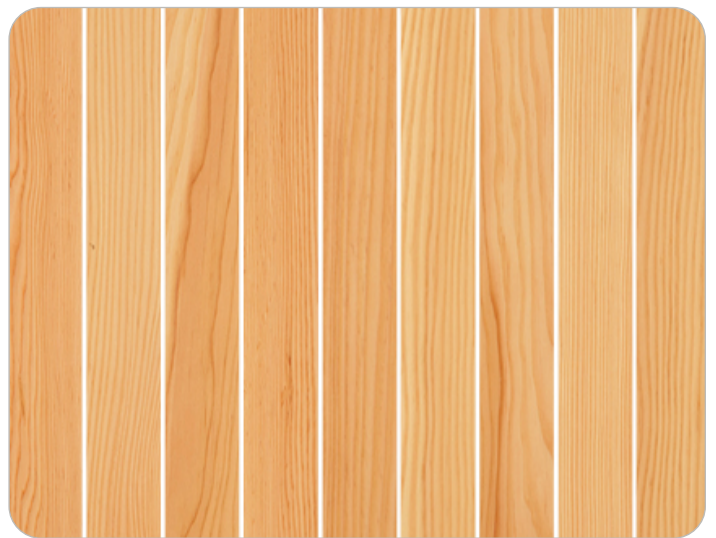
Western Hemlock
Mixed Grain



Western Hemlock
Vertical Grain



White Oak
Mixed Grain



Douglas Fir
Mixed Grain



Application

The Tongue and Groove Linear provides the classic “V” Groove closed reveal look and creates a continuous, monolithic ceiling field. Access can be through strategically located access panels. Members are directly attached via Z-Clips to T-Bar main runners progressively.

Acclimatization

Tongue and Groove Linears must be cared for in a controlled interior environment (RH 25%-55% max; temp. 60°-80°) and installed only after reaching equilibrium moisture content. Exterior installations are possible with solid wood where the ceiling field is not exposed to direct wetting from the elements such as under a soffit or overhang. Please reach out to 9Wood for more information.

Acoustics

The Tongue and Groove Linear is considered acoustically reflective.

Fire Rating

Individual members are treated with a Fire Retardant that helps it meet Class A per ASTM E84.

LEED

Tongue and Groove Linears may help contribute to LEED credits for: Material sourcing, Material ingredients, Low Emitting Materials, and Environmental Product Declarations. Credit support based on design choices.

MEP

The Tongue and Groove Linear permits MEP penetrations in the ceiling’s surface. Cut panels may require supplemental reinforcement. Fixtures and diffusers must be independently supported.

Seismic

Z-Clips are typically mechanically screwed to T-Bar for seismic compliance. Please consult local code or a licensed engineer for any additional requirements.

Suspension

Tongue and Groove Linears are attached to 15/16” heavy duty T-Bar main runners via clips and screws. Main runners are typically 2’ on center.

System Weight

Tongue and Groove Linears typically weigh 2-4 pounds per square foot, depending on members per linear foot and species.



Custom
made fast

9wood.com

999 South A Street
Springfield, OR 97477
Tel: 888-767-9990
sales@9wood.com

This information is for illustrative purposes only. The featured products and processes are specific to the project and should not be duplicated without consulting 9Wood. © 2026 9Wood