



3300 | NANOPERF PLANK WALL | INSTALL GUIDE

Ceiling Accessories

Supplied by 9Wood

- Nanoperf Planks
- Pre-Glued Dowels
- Reveal shims
- Shop Drawings (when applicable)
- Touch-up finish (clear or stain)
- Wood perimeter trims (optional)
- Edgebanding (Optional)

Supplied by Others

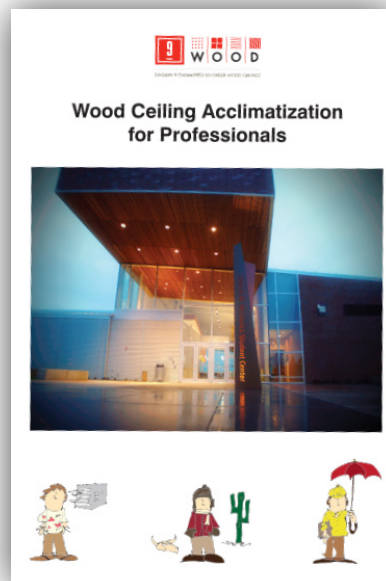
- Furring Strips
- Fasteners and hardware (if required)
- Tools for installation and/or field cutting
- Cleaning supplies (dust cloth, polish, etc.)



Attention

Prior to installation, ambient temperatures and humidity must be maintained at the levels intended for the project when occupied. Please refer to the 9Wood “Wood Ceiling Acclimatization for Professionals” handbook, the “A Not-So-Dry Look at Wood Acclimatization” DVD, and AWI standards.

- During installation it is recommended that regular measurements be pulled from the start of run to stay on module.
- Handle the Nanoperf members carefully to avoid surface or edge damages. Wear gloves if necessary.
- Veneer edging is not recommended. Use trim to conceal visible edges if needed.





Suspension

Step 1 - Reference Furring Suspension

- Establish reference points (e.g., Point A, B, C on a wall, point D or E at the floor or ceiling, or point F at a room feature) to align the furring suspension (see Figure 1).
- Note: Shop drawings may offer a recommended reference point.

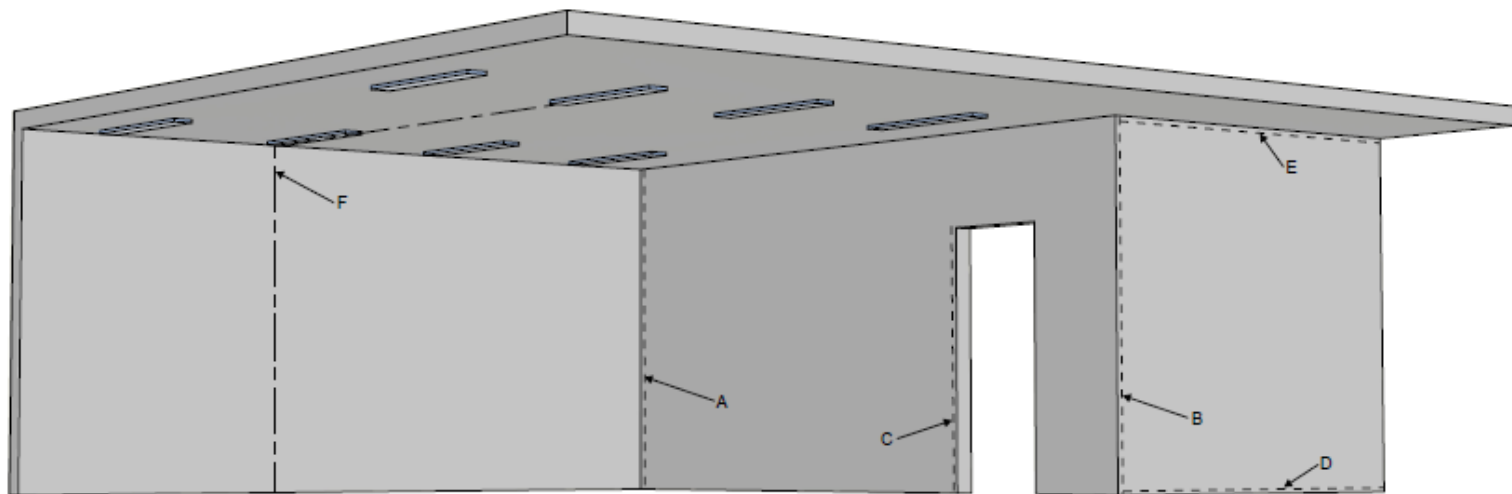


Figure 1



Installation

Step 2– Install Furring Suspension

- Furring strips are to be installed perpendicular to the Nanoperf Planks (see Figure 2)
- Attach the furring strips to the wall framing ensuring that the fasteners sufficiently penetrate the framing members.
- Vertical wood members require horizontal furring strips (see Figure 3)
- Horizontal wood members require vertical furring strips (see Figure 4 and Figure 5).
- If wall framing and plank direction are not compatible with furring layout, install a second layer or lathe (see Figure 4)
- Install furring strips with a maximum of 24" on center spacing, leaving no more than a 3" cantilever if needed (see Figure 3, Figure 4, and Figure 5).

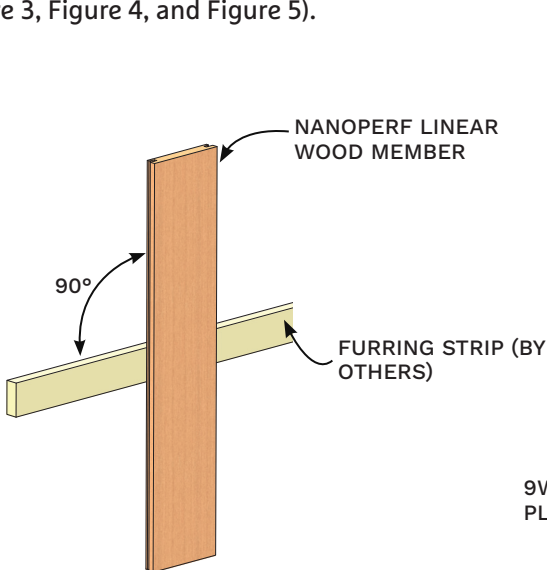


Figure 2

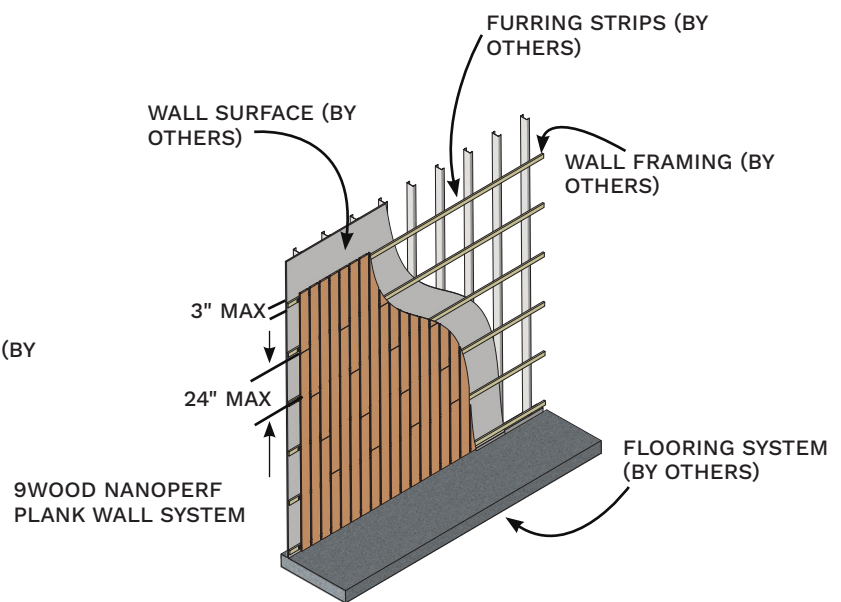


Figure 3

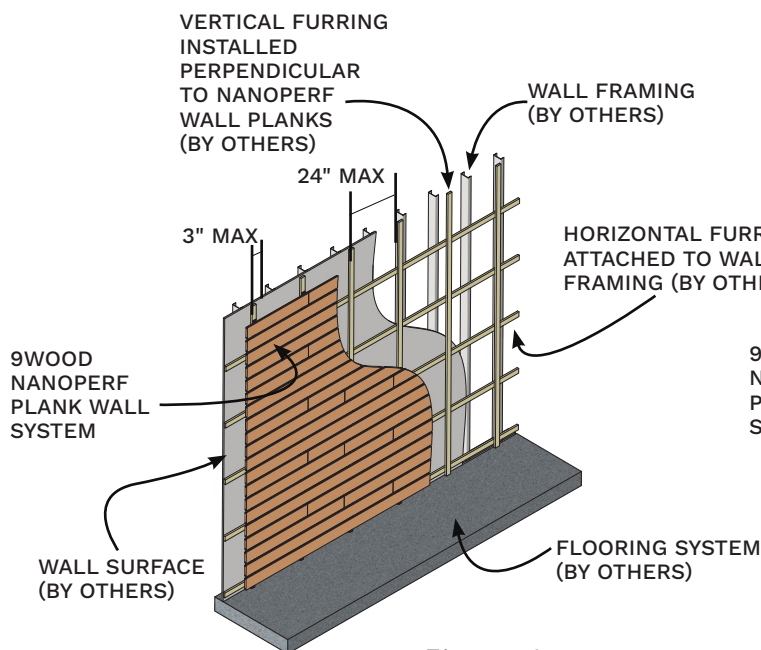


Figure 4

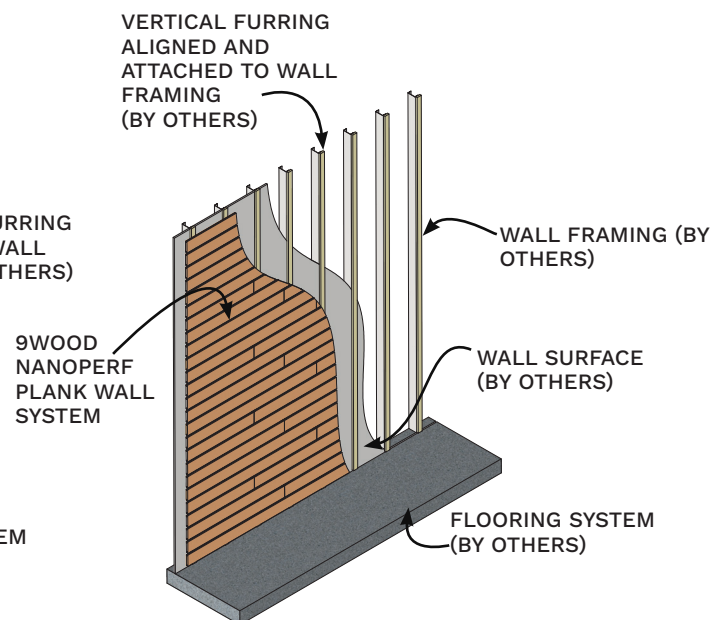


Figure 5

NANOPERF PLANK WALL | Install Guide



Step 3 - Positioning and Installing the First Member (standard)

- A straight edge or a laser is recommended to maintain a consistent edge to start the run (see Figure 6)
- Note: If the first member is ripped to a narrower width, skip ahead to step 4
- With the first member held in place, install an Open Reveal clip at the furring so it holds the grooved edge of the member (see Figure 6 and Figure 7).
- Attach the clip to the furring strip with a #8 x 5/8" pan head or HWH SMS fastener (see Figure 6 and Figure 7).
- Install an Alignment clip between two members at the grooved edge (see Figure 6 and Figure 7).
- Use a 1/16" jig between two members to set the spacing (see Figure 6)
- Press the Alignment clip firmly against the wood members until it sits flush against the wood member. Push the two members tight against the 1/16" jig (see Figure 7).
- Install an Open Reveal clip and Alignment clip on the opposite side of the member (see Figure 8).
- Remove the 1/16" jig.

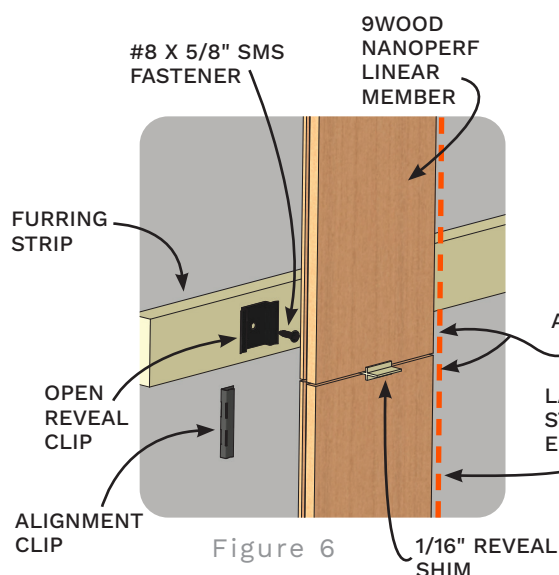


Figure 6

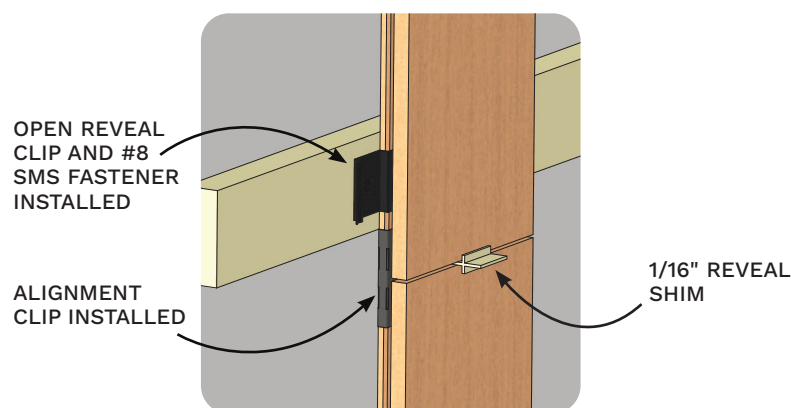


Figure 7

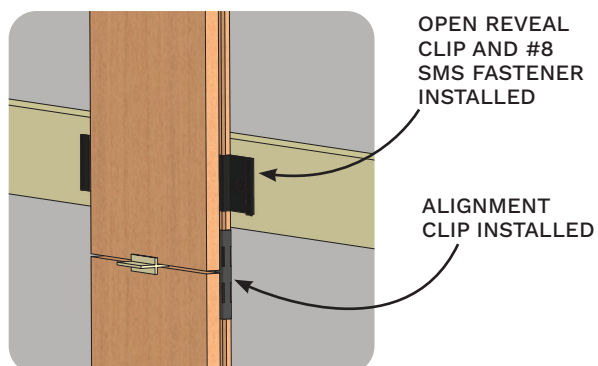


Figure 8



Step 4 - Positioning and Installing the First Member (standard)

- Measure the member and cut to length if needed. Trim to width may be required (see Figure 10).
- On the backside, mark the furring locations on the black Soundtex fabric at the edge near the perimeter (see Figure 9).
- Cut and remove the fabric at these spots (see Figure 9).
- Install pre-glued dowels where the fabric was removed. Ensure dowels are flush with the backside (see Figure 9).
- Moisten the dowels with water, then hammer them into place with a metal hammer. Use cardboard or a soft cloth on the plank underside to prevent damage (see Figure 9).
- The dowel glue requires a one (1) hour minimum drying before handling. 24 hours are required for full strength.

Tip

- Work carefully to avoid marring the plank face

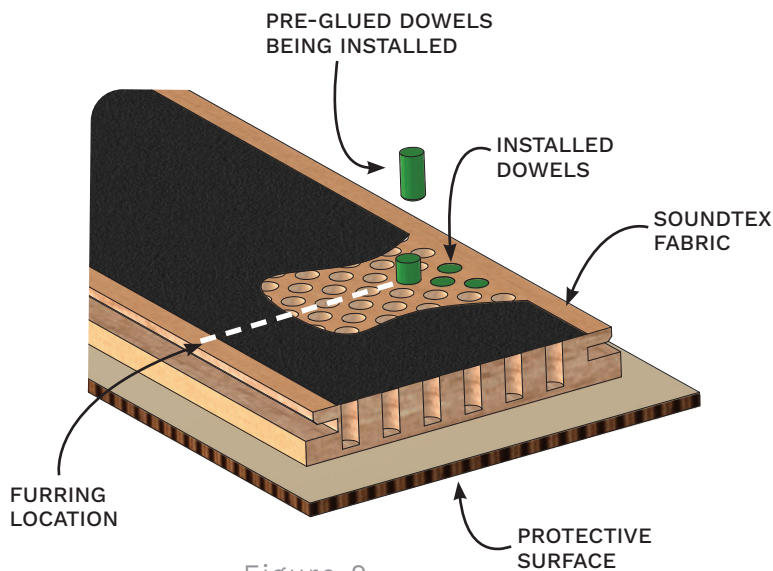


Figure 9

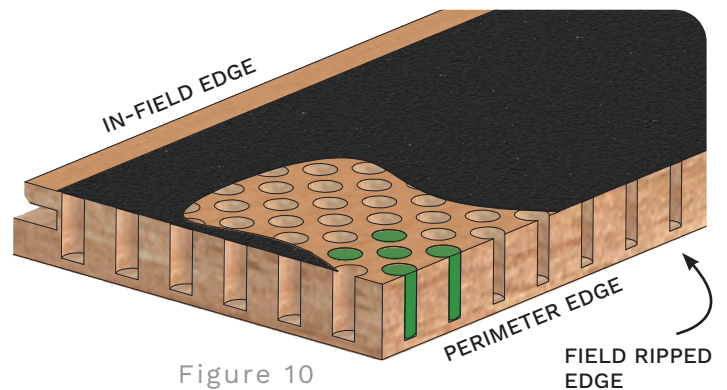


Figure 10



Step 5 - Positioning and Installing the First Member

- Use a straight edge or a laser to keep the starting edge even (see Figure 11)
- Position member end centered on furring (see Figure 11).
- Use 18ga finish nails or trim head fastener to attach wood member to furring (see Figure 11).
- Ensure that the attachment fastener goes through the solid core and/or through the dowel filler (see Figure 11).
- Place a 1/16" shim between planks to set gap (see Figure 11).
- Secure the opposite side of the plank with an Open Reveal Clip (see Figure 12).
- Secure clip with a #8 x 5/8" pan head of HWH SMS Fastener (see Figure 12).
- Remove the 1/16" shim.
- Use a matching putty and touch-up finish to dress the holes left from finish nails (see Figure 12).

Tip

- Check alignment before final fastening.

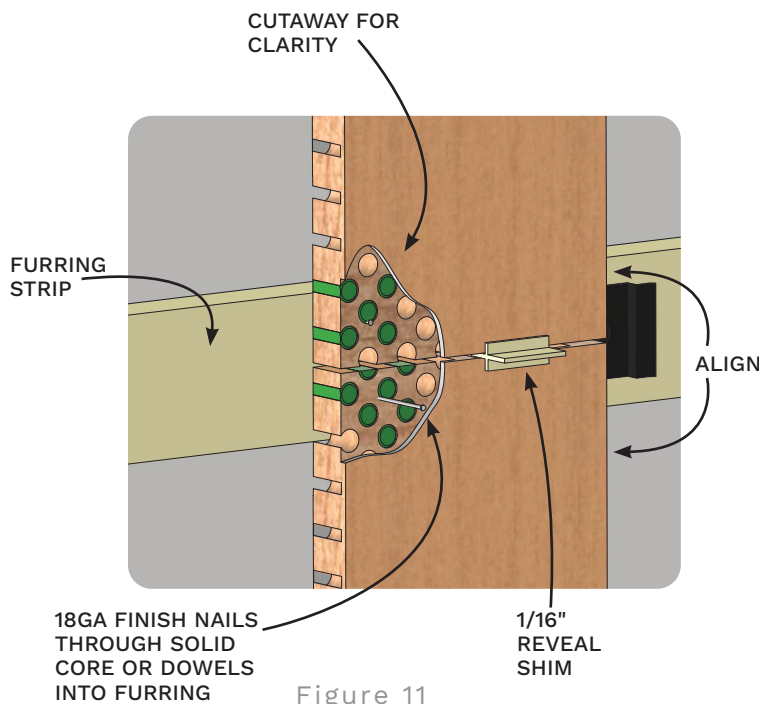


Figure 11

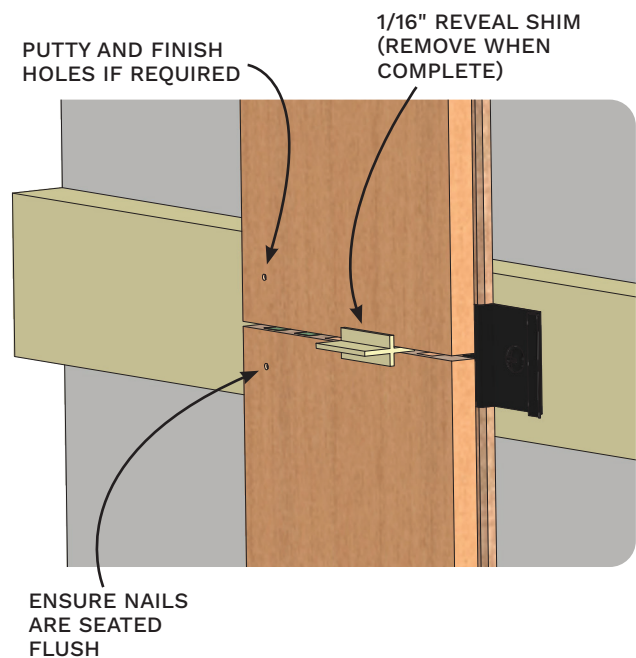


Figure 12

NANOPERF PLANK WALL | Install Guide



Step 6 - Continuing Installation

- If required, cut the wood member to length.
- Attach one alignment clip to the member edge near the previously installed linear member (see Figure 13)
- Position the back of the wood member against the furring (see Figure 13)
- Slide the wood member toward the previously installed linear member until the groove engages with the open reveal clip. There should be a 3/4" reveal between the wood members.
- Secure the opposite side with an open reveal clip at each furring strip. Attach open reveal clips with #8 x 5/8" pan head or HWH SMS fasteners (see (figure 14).
- Use a 1/16" shim to set the reveal between the ends of two planks (see Figure 13 and Figure 14).
- Slide the next member into place (see Figure 13 and Figure 14).
- Attach an alignment clip on both sides of the joint. Press them firmly against the members (see Figure 14).

Tip

- If end joints occur centered on a furring strip, alignment clips are not required.

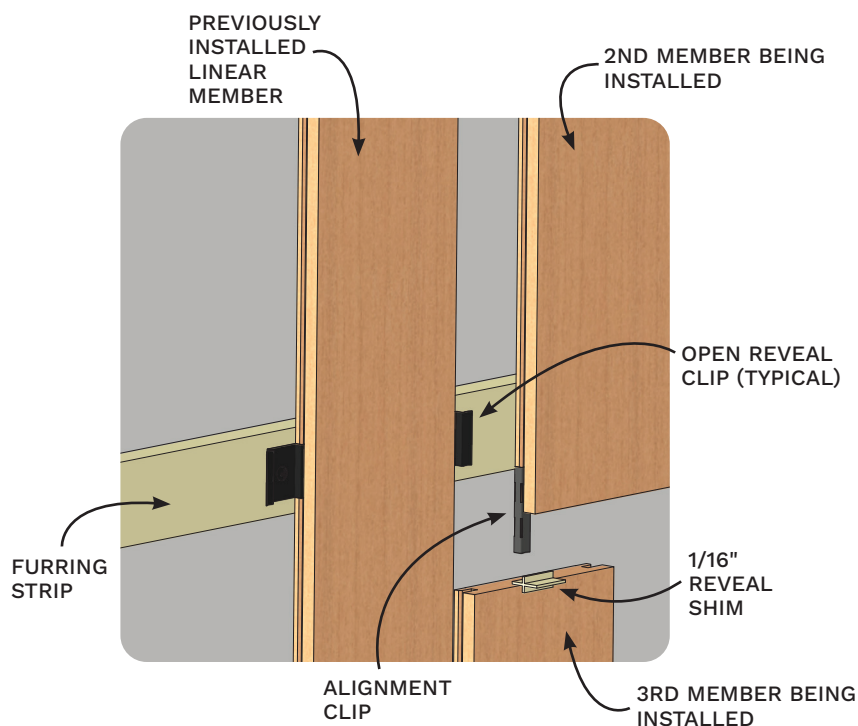


Figure 13

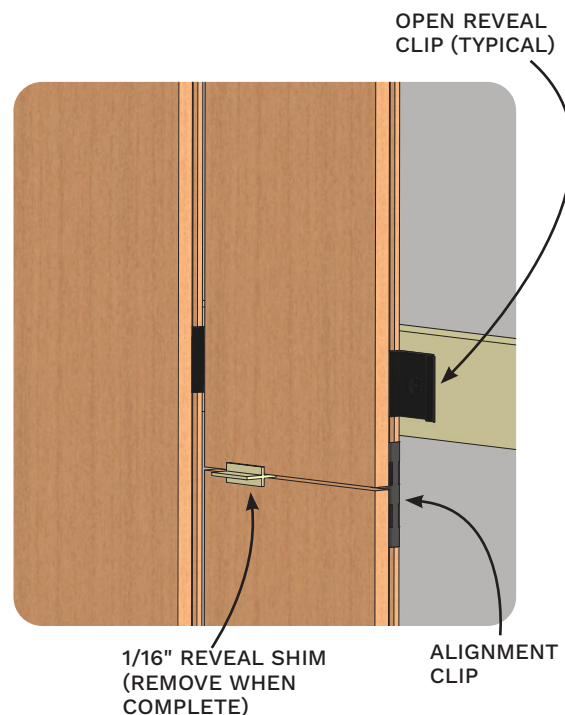


Figure 14



Step 7 - Installing the Final Member

- Measure and cut the final member to fit the perimeter.
- If the member is full width, repeat step 6 (see above)
- On backside, mark the furring strip locations on the black Soundtex fabric at the edge near the perimeter (see Figure 9).
- Cut and remove the fabric at these spots (see Figure 9).
- Install pre-glued dowels where the fabric was removed. Ensure dowels are flush with the backside (see Figure 9).
- Moisten the dowels with water, then hammer them into place with a metal hammer. Use cardboard or a soft cloth on the plank underside to prevent damage (see Figure 9).
- The dowel glue requires a one (1) hour minimum drying before handling. 24 hours are required for full strength.
- Slide the member into place and engage with open reveal clip. This sets the edge reveal between members (see Figure 15).
- Use a 1/16" reveal shim between member ends to set spacing (see Figure 15 and Figure 16).
- Use 18ga finish nails or trim head fastener to attach wood member to furring (see Figure 15).
- Use a matching putty and touchup finish to dress the holes left from finish nails (see Figure 16).

Tip

- Check alignment before final fastening.

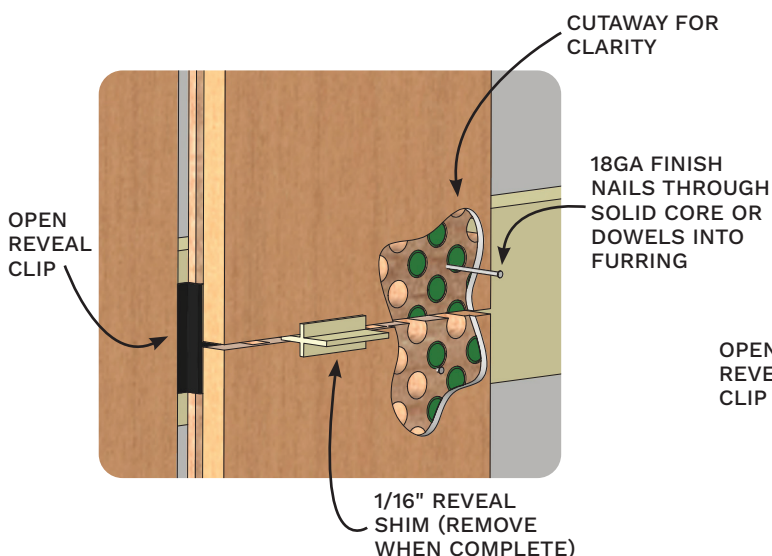


Figure 15

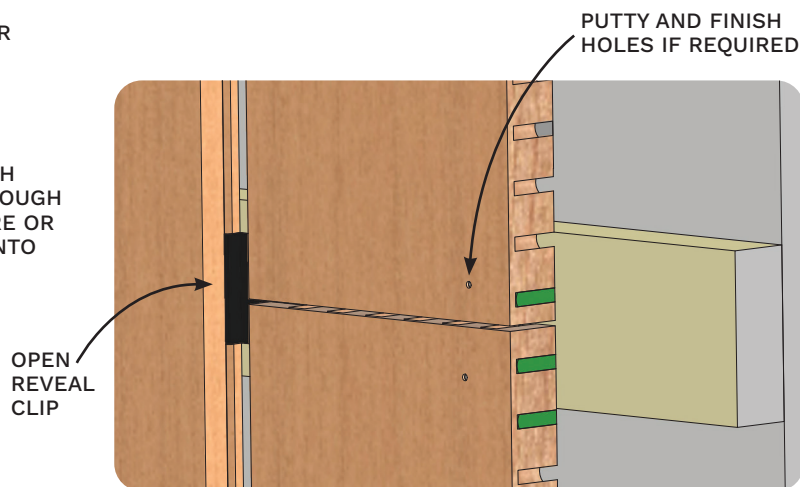


Figure 16



Finishing Field Conditions

Veneer Products

- Applying edgebanding to Nanoperf Members is not recommended.
- If edges are visible and need to be concealed, using trim is preferred.

Final Dust / Clean

- Dust wood members with a dry cloth.
- Clean with a dry cloth if needed. Do not use chemicals, aerosols, or polishes
- Aerosol furniture polishes can be used if they don't affect the sheen. Test small area first. Do not spray directly on wood.
- Remove greasy finger prints with a small amount aerosol furniture polish applied to a soft cloth. Avoid over-rubbing.
- Lightly rub minor scuffs with a dry, clean steel wool (#0000) if needed.



Custom
made fast

9wood.com

999 South A Street
Springfield, OR 97477
Tel: 888-767-9990
sales@9wood.com

This information is for illustrative purposes only.
The featured products and processes are specific
to the project and should not be duplicated
without consulting 9Wood. © 2025 9Wood