

**NOTES:**  
 • ALL HARDWARE TO BE NONFERROUS.

999 SOUTH A STREET  
 SPRINGFIELD, OR 97477

TOLL-FREE FACSIMILE  
 888.767.9990 888.767.9998

WWW.9WOOD.COM  
 ENGINEERING@9WOOD.COM

PROJECT CERTIFICATIONS: YES  NO

PROJECT

PROJECT NUMBER:  
 PROPOSAL NUMBER:

REVISION HISTORY

REV#	DATE	DESCRIPTION
10		
9		
8		
7		
6		
5		
4		
3		
2		
1		
0	08.29.25	RELEASE FOR APPROVALS

SHEET INFORMATION

DRAWING TYPE: SHOP DRAWINGS  
 DRAWN BY: MAM  
 STANDARDS REVIEW: RAC  
 TECHNICAL REVIEW: RAC

THIS DOCUMENT CONTAINS PROPRIETARY INFORMATION OF 9WOOD, INC.  
 COPYRIGHT © 2025 9WOOD, INC.  
 ALL RIGHTS RESERVED.

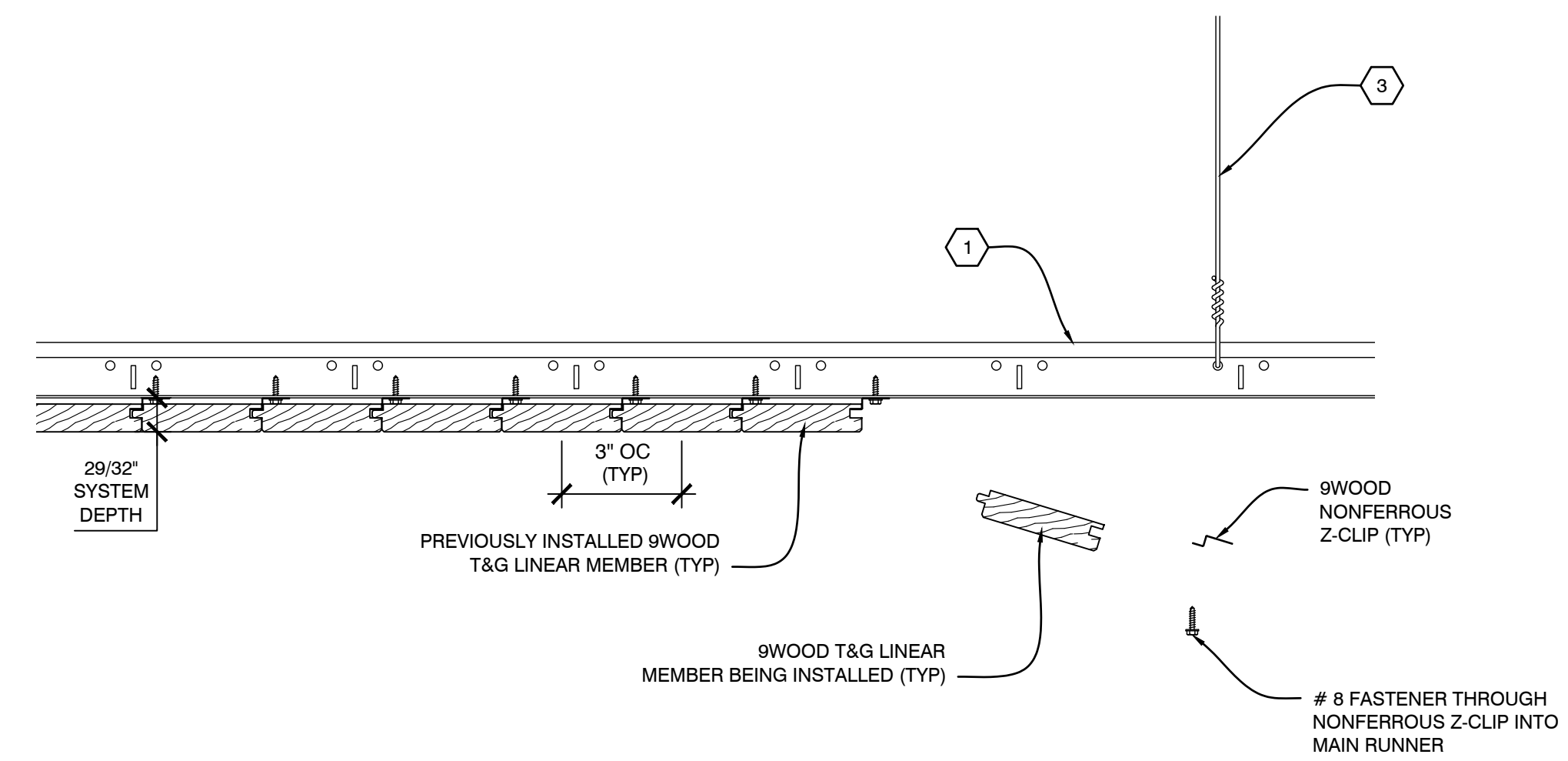
KEY NOTES

- 1 15/16" HEAVY DUTY T-BAR MAIN RUNNER (TYP. BY SUBCONTRACTOR)
- 2 15/16" T-BAR CROSS TEE (TYP. BY SUBCONTRACTOR)
- 3 HANGER WIRE (TYP. BY SUBCONTRACTOR)
- 4 WALL ANGLE AND APPROPRIATE INSTALLATION FASTENER (TYP. BY SUBCONTRACTOR)
- 5 PERIMETER CONDITION (TYP. BY OTHERS)

SHEET TITLE

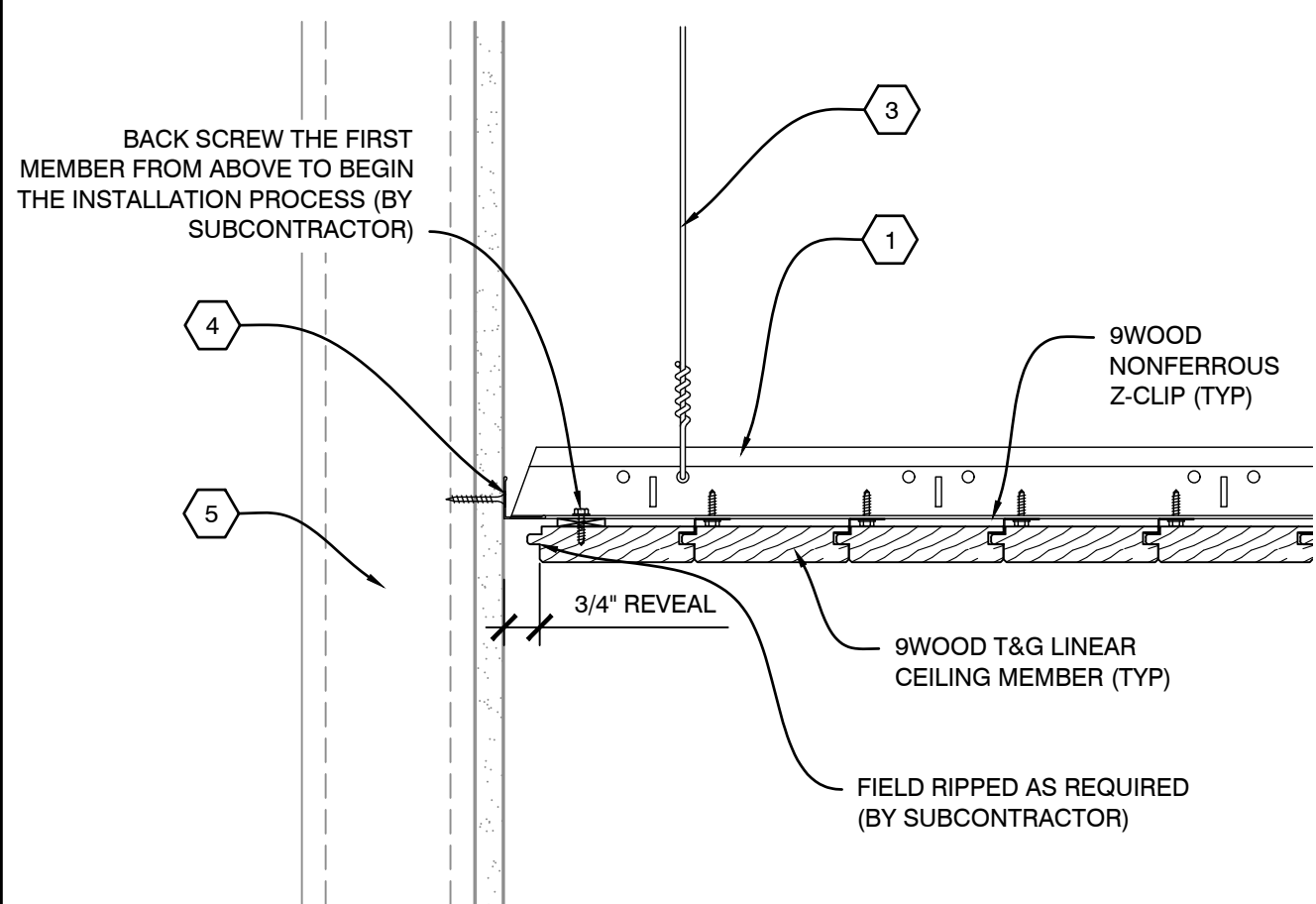
**SYSTEM DETAILS**

Z-501  
 SHEET 3 OF 3



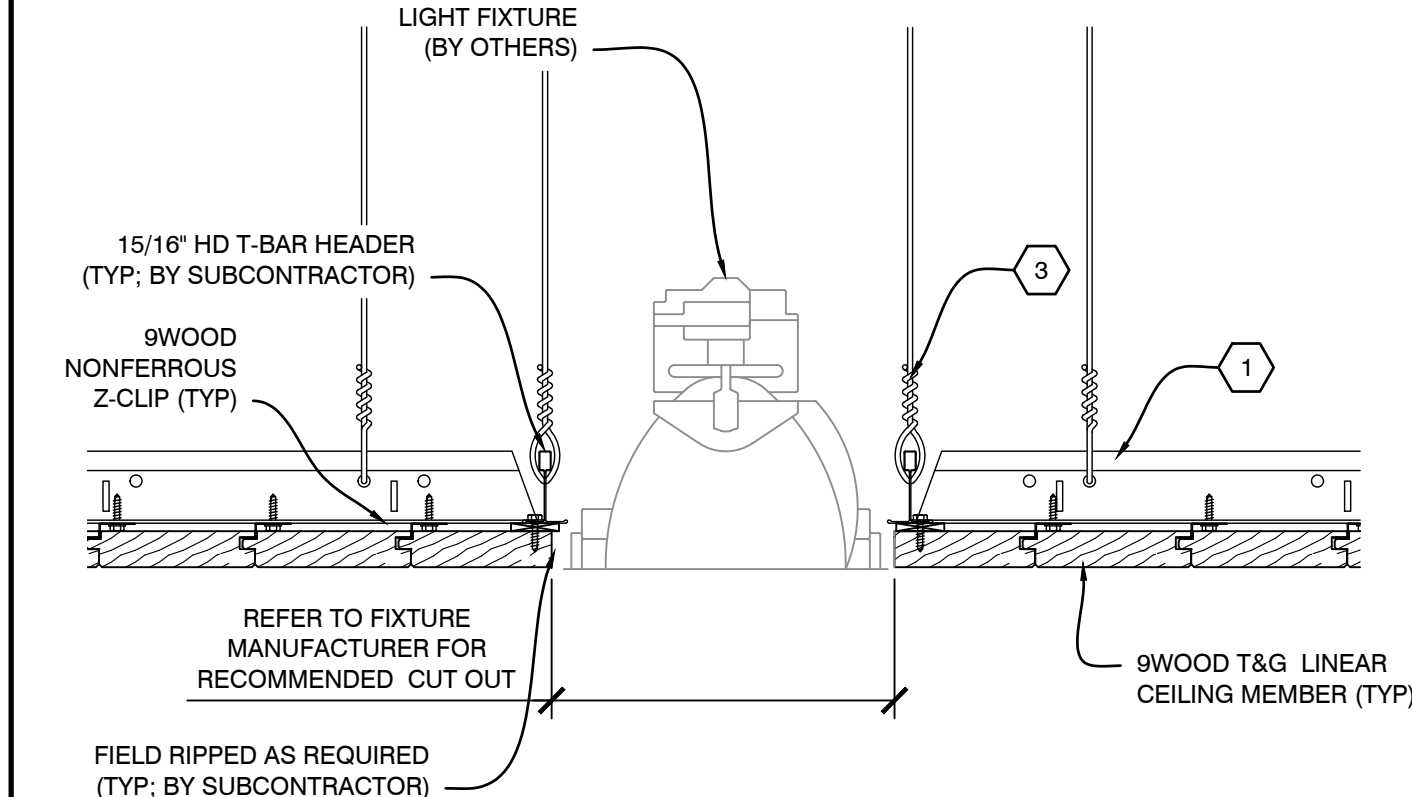
**C3** INSTALLATION PROCESS - T&G LINEAR MEMBER  
 SCALE: 1/4" = 1"

**NOTES:**  
 • DETAIL TO BE USED WHERE APPLICABLE.



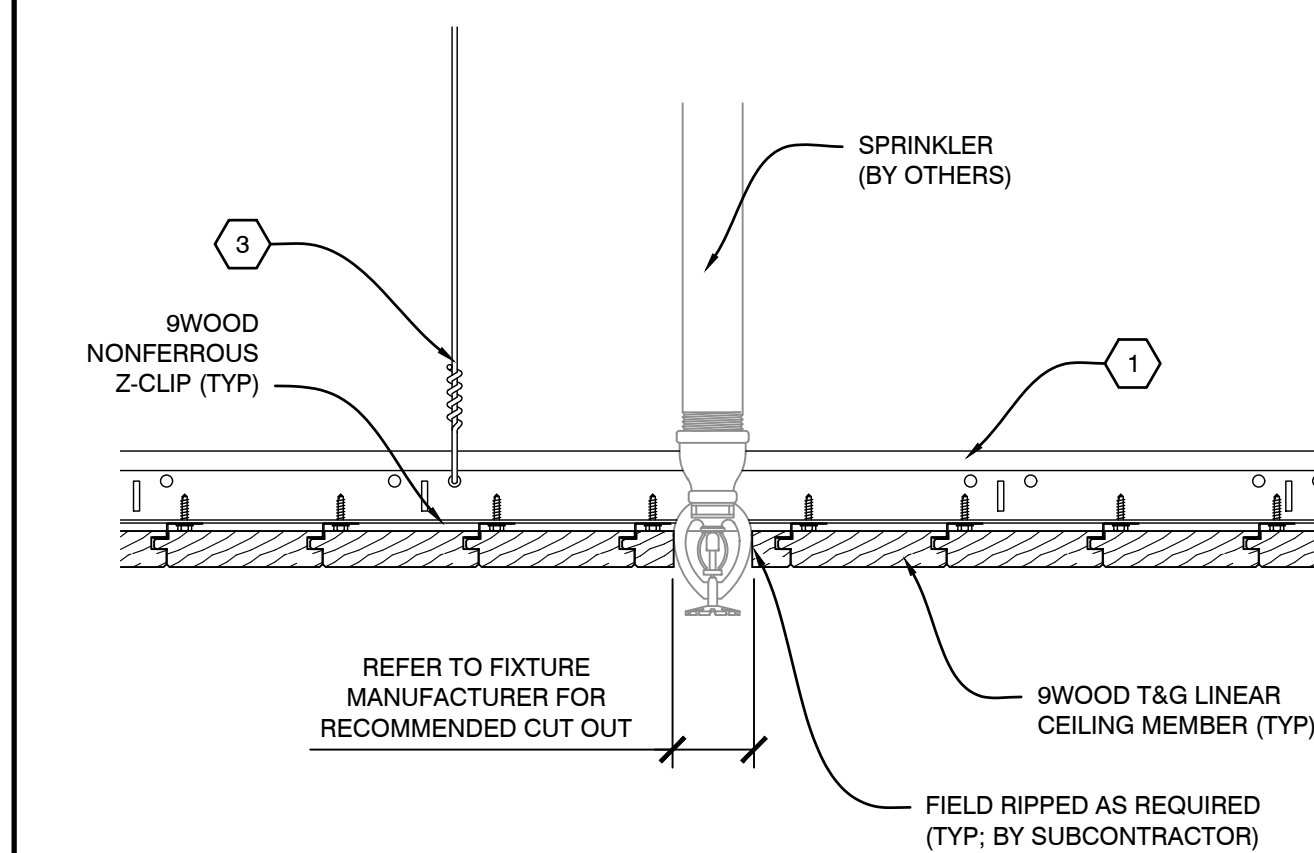
**B1** SECTION - PERIMETER  
 SCALE: 1/4" = 1"

**NOTES:**  
 • DETAIL TO BE USED WHERE APPLICABLE.  
 • FIXTURES TO BE INDEPENDENTLY SUPPORTED AND NOT TO BEAR ON 9WOOD CEILING SYSTEM.



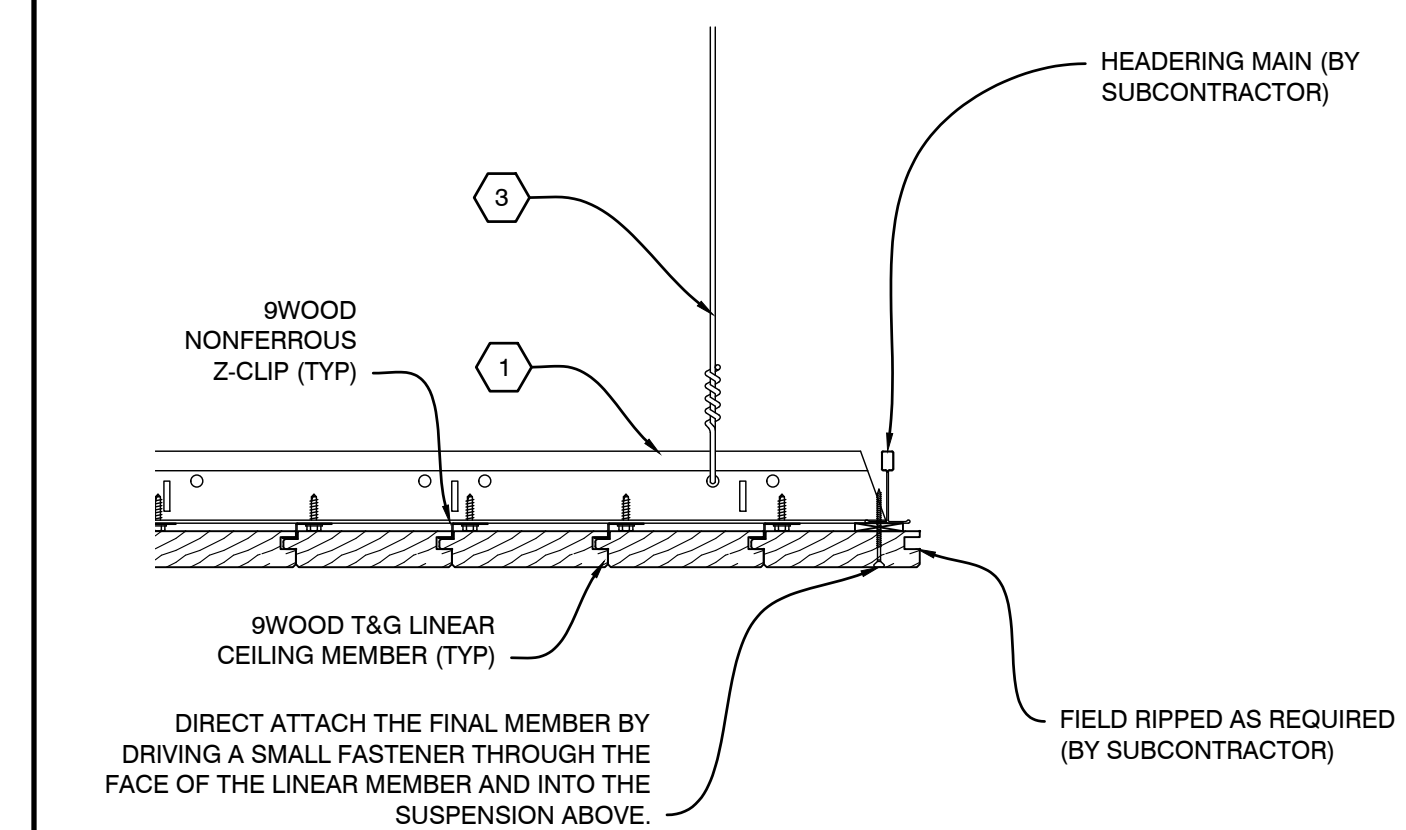
**B2** SECTION - LIGHT FIXTURE  
 SCALE: 1/4" = 1"

**NOTES:**  
 • DETAIL TO BE USED WHERE APPLICABLE.  
 • FIXTURES TO BE INDEPENDENTLY SUPPORTED AND NOT TO BEAR ON 9WOOD CEILING SYSTEM.



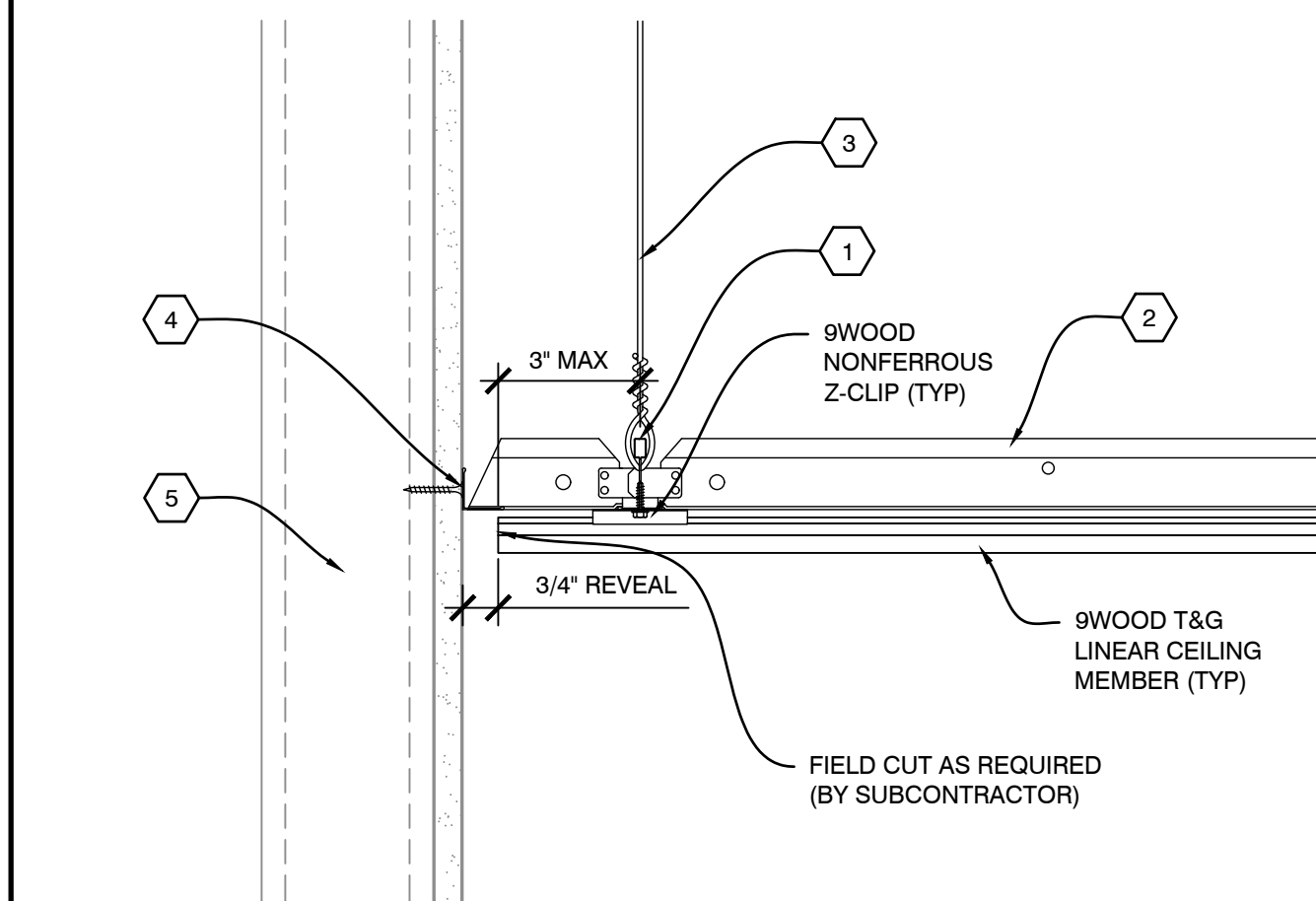
**B3** SECTION - SPRINKLER  
 SCALE: 1/4" = 1"

**NOTES:**  
 • DETAIL TO BE USED WHERE APPLICABLE.



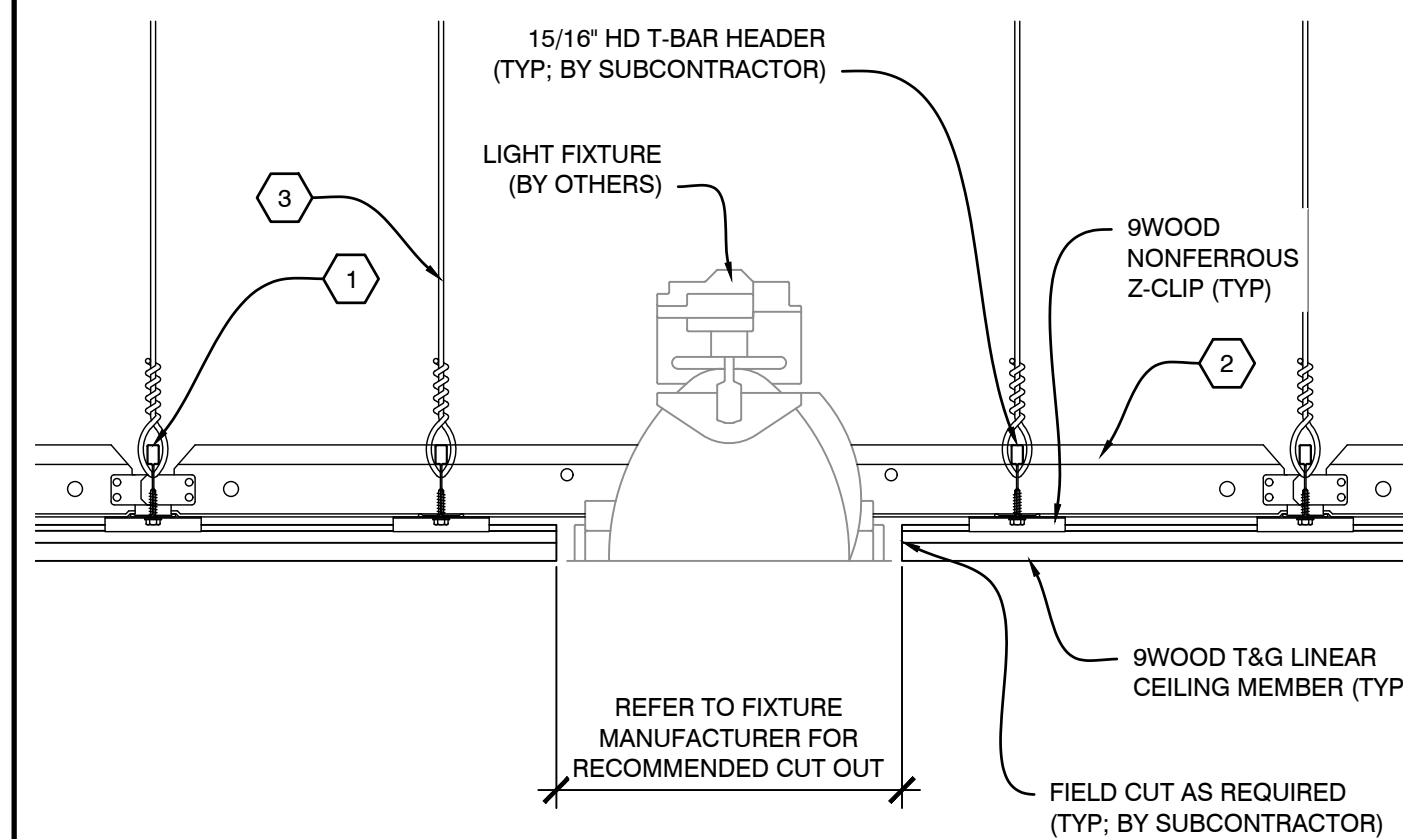
**B4** SECTION - PERIMETER  
 SCALE: 1/4" = 1"

**NOTES:**  
 • DETAIL TO BE USED WHERE APPLICABLE.



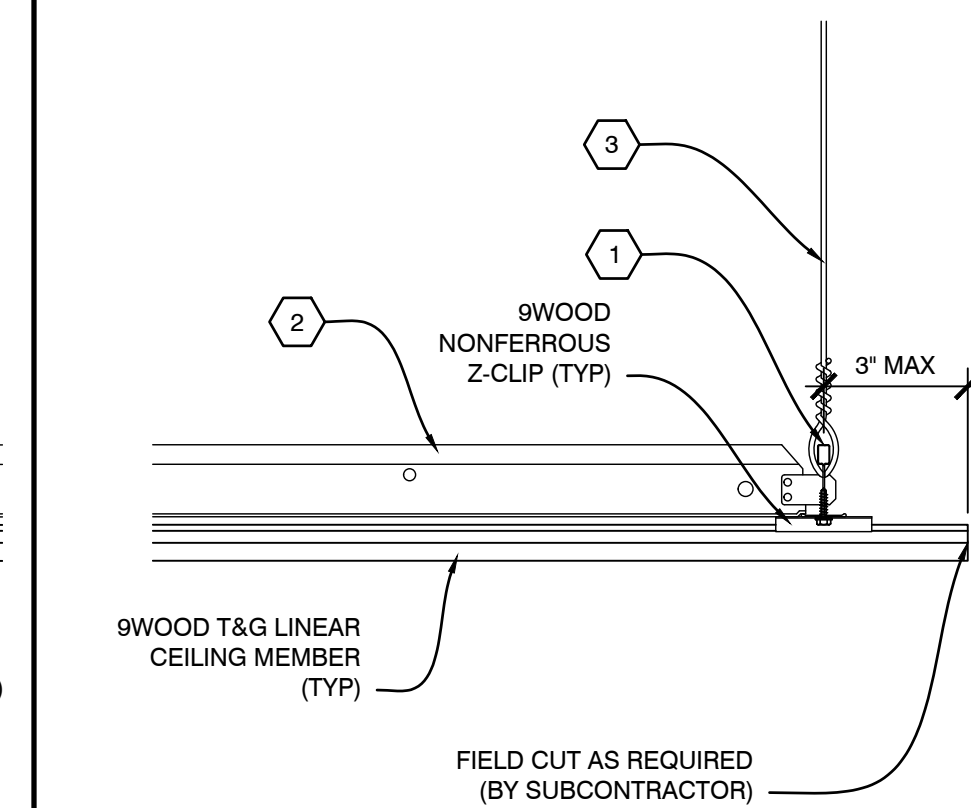
**A2** SECTION - PERIMETER  
 SCALE: 1/4" = 1"

**NOTES:**  
 • DETAIL TO BE USED WHERE APPLICABLE.  
 • FIXTURES TO BE INDEPENDENTLY SUPPORTED AND NOT TO BEAR ON 9WOOD CEILING SYSTEM.



**A3** SECTION - LIGHT FIXTURE  
 SCALE: 1/4" = 1"

**NOTES:**  
 • DETAIL TO BE USED WHERE APPLICABLE.



**A4** SECTION - PERIMETER  
 SCALE: 1/4" = 1"

9WOOD IS A REGISTERED TRADEMARK OF 9WOOD, INC. © 2025 9WOOD, INC. ALL RIGHTS RESERVED. 15/16\"/>

**A1** SECTION - T&G SPLAY LINEAR MEMBER  
 SCALE: 1" = 1"

