

DATA SHEET

1100 Cross Piece Grille

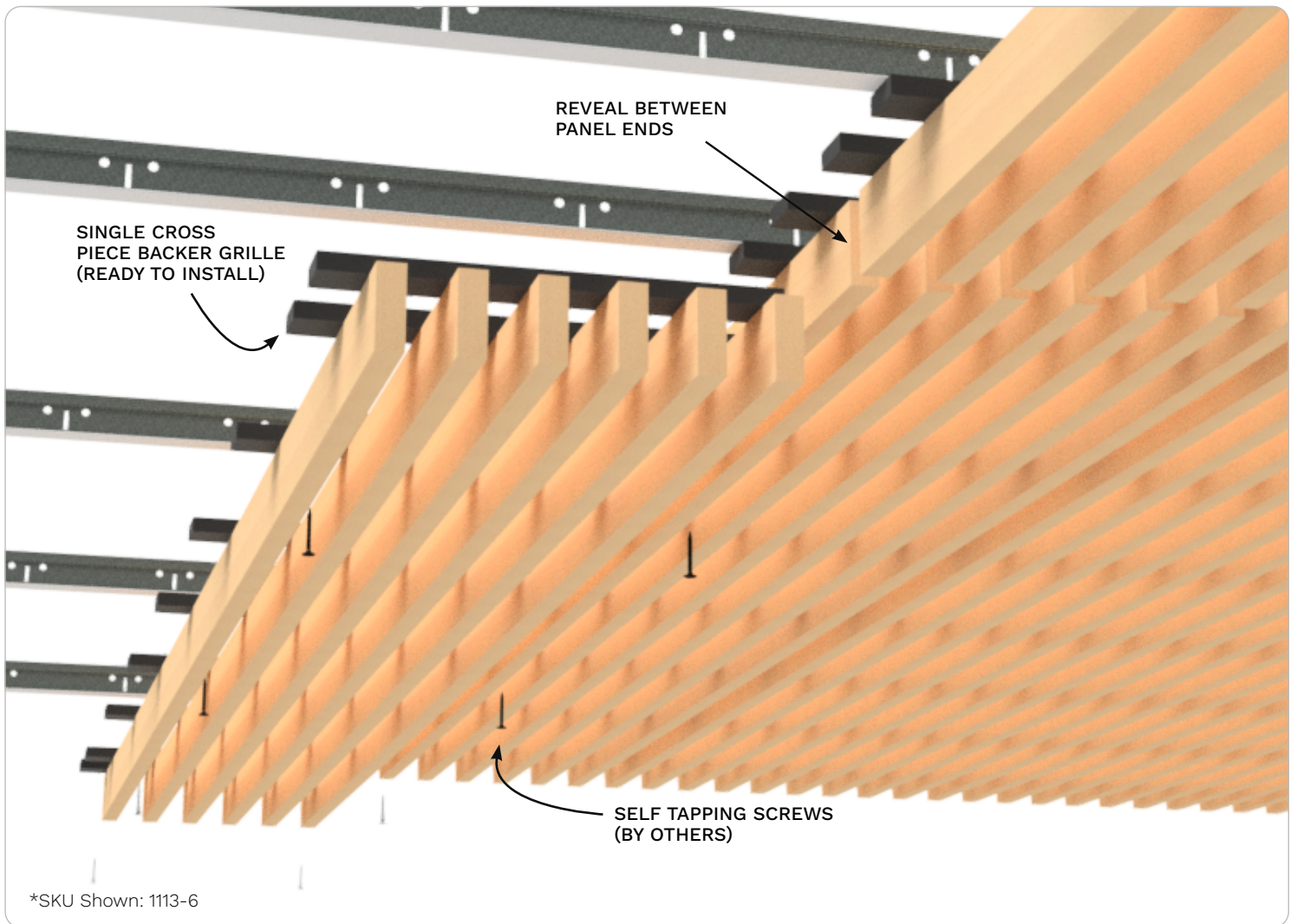
Real Wood Veneer



1100 | CROSS PIECE GRILLE | REAL WOOD VENEER

The **9Wood Cross Piece Grille** wood ceiling offers a design where the individual wood member is deeper than it is wide. The veneer panel width is 12", with panel lengths ranging from 2' to 10' in 1' increments.

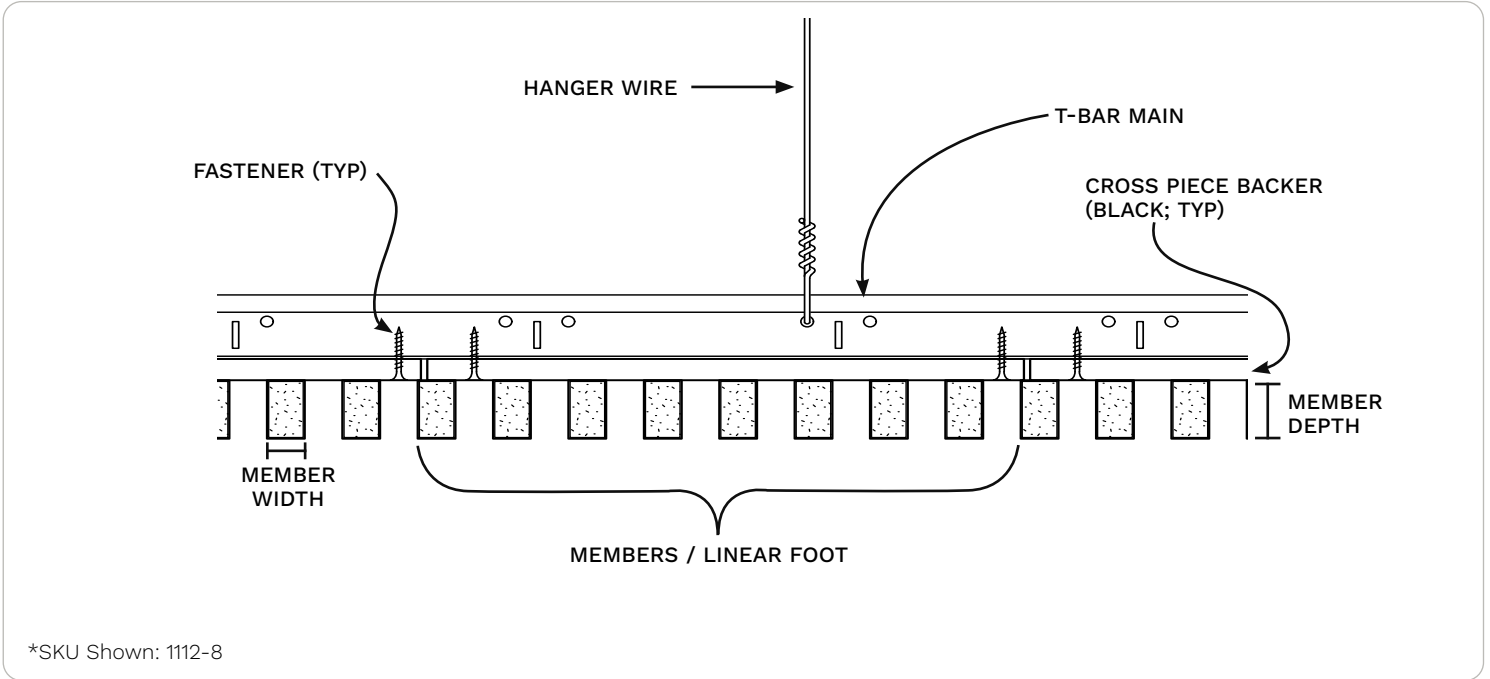
Attachment for the **Cross Piece Grille** is via screws fastened directly through the backer into standard T-Bar grid. This provides basic accessibility for each panel.



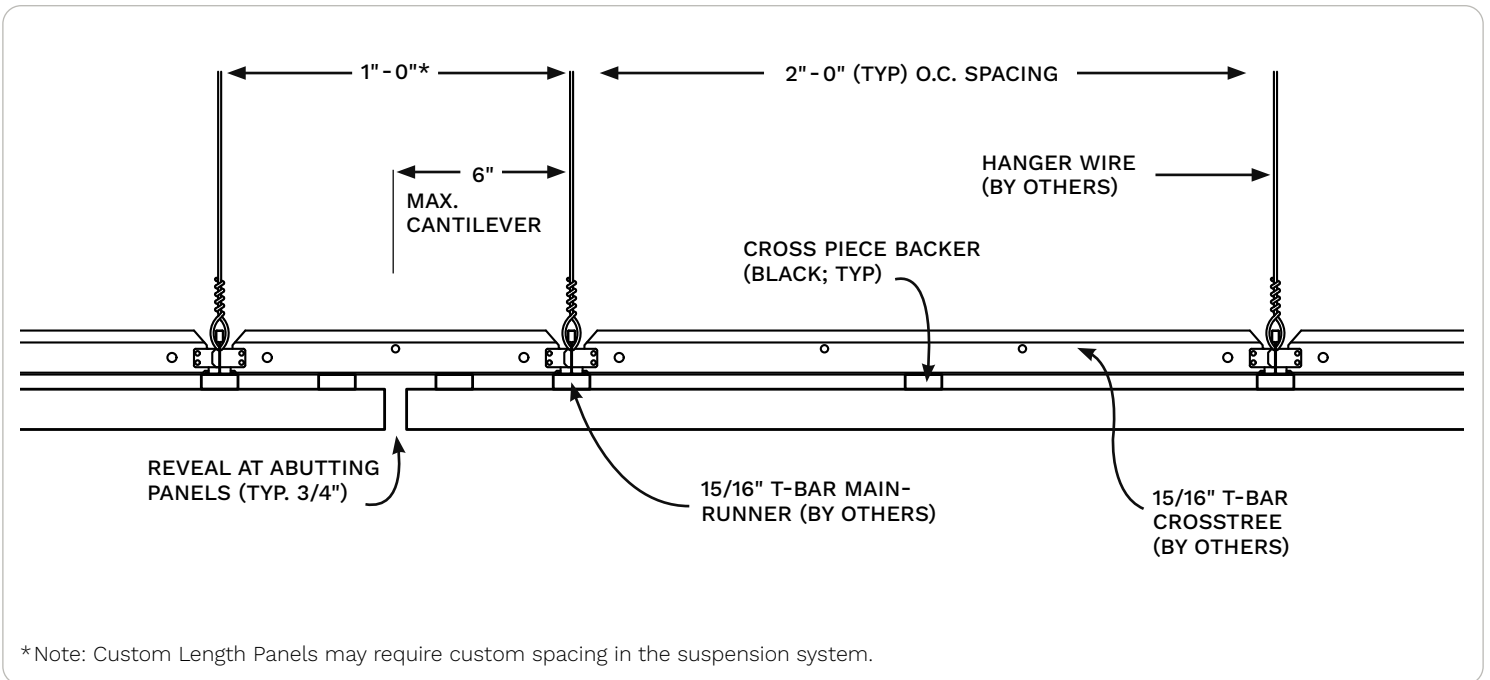
CROSS PIECE GRILLE | Typical Specifications



Typical Specifications



Suspension Conditions





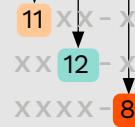
How to build your SKU

- **Pick your member size** (Rows). This gives you your first four digits (e.g., 1112).
- **Pick your density** (Columns). This is the number of wood members per foot.
- **Combine them with a dash.** A 1 x 2 member with 8 members per foot creates SKU 1112-8.

SKU Decoder

Example: 11 12 - 8

- Style "1100 Cross Piece Grille"
- Member Size "1 x 2 Nominal"
- Density "8 Members / LF"



SKU Table

Member Size (Nominal)	Width	Depth	Density (Members per Linear Foot)						
			2	3	4	5	6	7	8
1 x 2	3/4"	1 3/8"	1112-2	1112-3	1112-4	1112-5	1112-6	1112-7	1112-8
1 x 3	3/4"	2 1/4"	1113-2	1113-3	1113-4	1113-5	1113-6	1113-7	1113-8
1 x 4	3/4"	3 1/4"	1114-2	1114-3	1114-4	1114-5	1114-6		
1 x 6	3/4"	5 1/4"	1116-2	1116-3	1116-4	1116-5			
2 x 3	1 7/16"	2 1/4"	1123-2	1123-3	1123-4				
2 x 4	1 7/16"	3 1/4"	1124-2	1124-3	1124-4				
2 x 6	1 7/16"	5 1/4"	1126-2						

Additional width, depth, and M/LF options may be available. Please check with 9Wood if you don't see the combination that you have in mind.

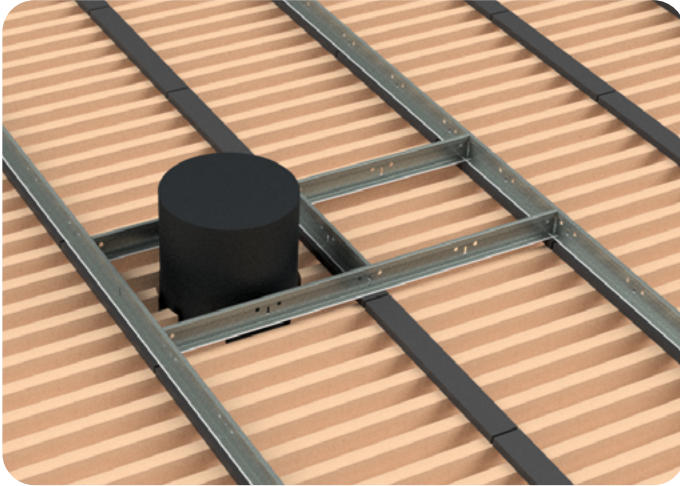
CROSS PIECE GRILLE | Lighting Integration Guidance



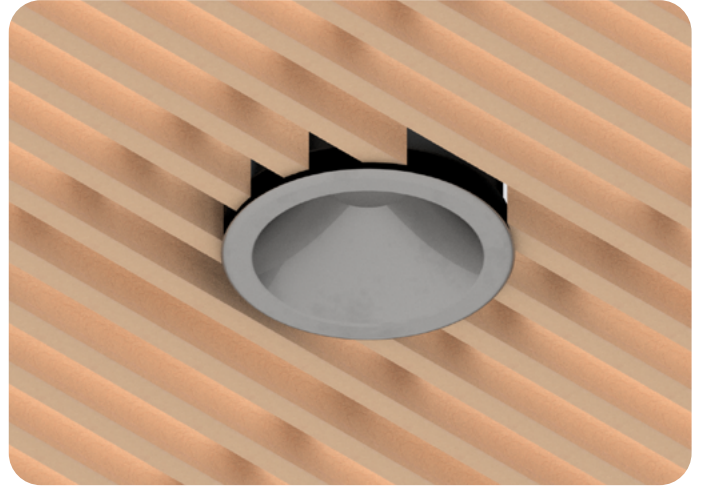
Key Points

- All fixtures **must** be independently supported.
- Cut panels may require supplemental reinforcement.
- 9Wood is here to help

Downlight Examples

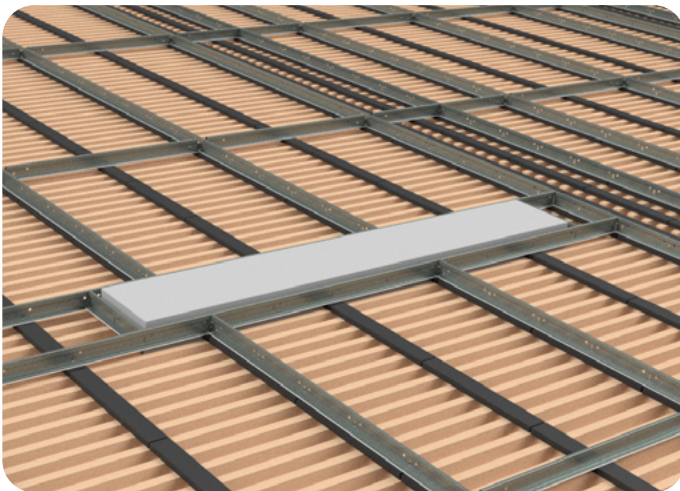


Direct Mount to T-Bar options use clips or brackets to attach lighting fixtures securely. Cut panels may require supplemental reinforcement.

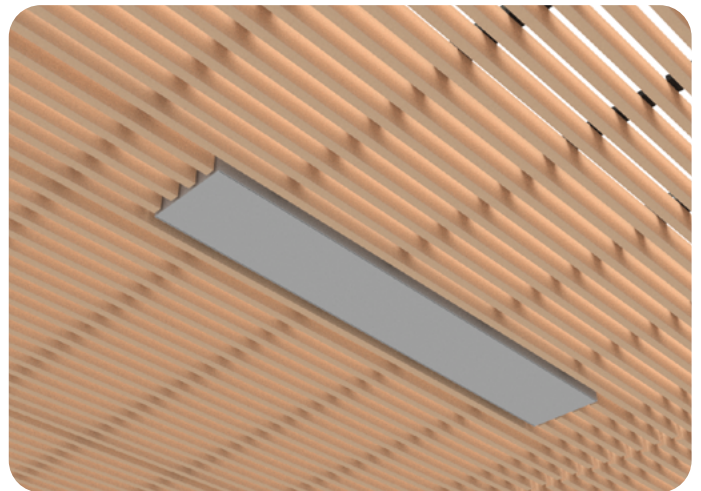


Integrate Downlights, cut precise openings in slats and add trim rings for downlights when cutting slats.

Linear Lighting Examples



Fixtures must be independently supported. Lighting is always mounted to structure or T-Bar, not to wood members or clips.



Integrate Linear Lighting by running fixtures parallel to the wood slats and coordinating dimensions with the slat reveals.

SPECIES OPTIONS | Real Wood Veneer



Species Options

Custom Made Fast veneer products are available in twelve FSC-certified wood species options. As with all natural wood products, there will be variation in color, grain, and natural characteristics. Veneers are available in either a 3–6 week or 8–10 week lead time depending on SKU + Species combination. Please check with 9Wood to learn more.

[See All Species Options on 9Wood.com](#) →

Finish & Color Options

All products are finished with a clear matte topcoat, regardless of color. Standard Colors are available on Cherry and White Oak veneers. Custom Color Matching is always available with no required minimums and at the same cost as Standard options. Send 9Wood a control sample to get started.

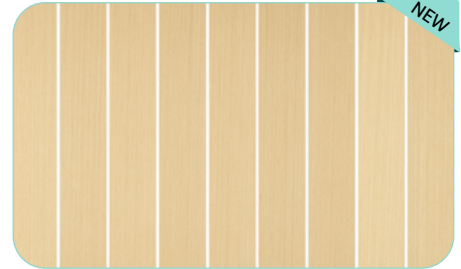
[See Standard Stains on 9Wood.com](#) →



Cherry
Plain Sliced



Douglas Fir
Quarter Sliced



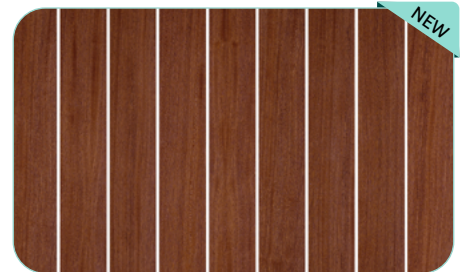
Engineered Elm
Quarter Sliced



Engineered Walnut
Quarter Sliced



Khaya Mahogany
Quarter Sliced



Sapele
Quarter Sliced



Walnut
Plain Sliced



Walnut
Quarter Sliced



White Ash
Plain Sliced



White Maple
Plain Sliced



White Oak
Plain Sliced



White Oak
Rift Sliced



Application

The Cross Piece Grille uses a pre-assembled panel fabrication process. This product can be installed throughout the country and is the preferred design in areas requiring seismic compliance. Panel access is available by means of removing attachment screws hidden in reveals. Repeated removal requires threaded 9Wood Caddy-Lock attachment as opposed to screws.

Acclimatization

Cross Piece Grilles must be cared for in a controlled interior environment (RH 25%-55% max; temp. 60°-80°) and installed only after reaching equilibrium moisture content.

Acoustics

The Cross Piece Grille can enhance acoustics via sound absorbing material placed over open reveals within the T-Bar grid. Insulation is typically provided locally. Specifiers should search within CSI MasterFormat Division 09 and Division 23, including:

09 81 00 Acoustical Insulation

09 84 00 Acoustical Wall/Ceiling Elements

23 07 00 HVAC Insulation

Fire Rating

Individual members use Fire-Rated (FR) Particleboard core and meet Class A per ASTM E84.

LEED

Cross Piece Grilles may help contribute to LEED credits for: Material sourcing, Material ingredients, Low Emitting Materials, and Environmental Product Declarations. Credit support based on design choices, please contact 9Wood for more information.

MEP

The Cross Piece Grille permits MEP penetrations in the ceiling's surface. Cut panels may require supplemental reinforcement. Fixtures and diffusers must be independently supported.

Seismic

Cross Piece Grilles provide seismic code compliance by means of mechanical direct screw attachment to T-Bar via the cross piece backer. Please consult local code or a licensed engineer for any additional requirements.

Suspension

Cross Piece Grilles are directly attached to 15/16" heavy duty T-Bar main runners. Main runners are typically installed 2' on center, depending on panel weight.

System Weight

Cross Piece Grilles typically weigh 2-4 pounds per square foot, depending on members per linear foot and species.



Custom
made fast

9wood.com

999 South A Street
Springfield, OR 97477
Tel: 888-767-9990
sales@9wood.com

This information is for illustrative purposes only. The featured products and processes are specific to the project and should not be duplicated without consulting 9Wood. © 2026 9Wood