

## STYLE IN MOTION® I-SERIES

---

### MONZA



**AMERICAN**  
LEATHER®

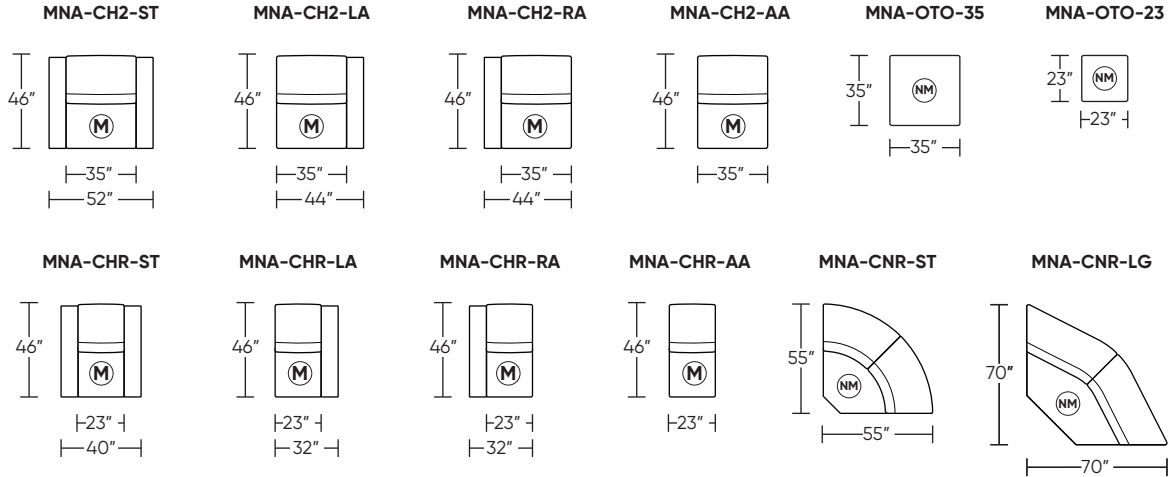
### MONZA

#### Standard Features:

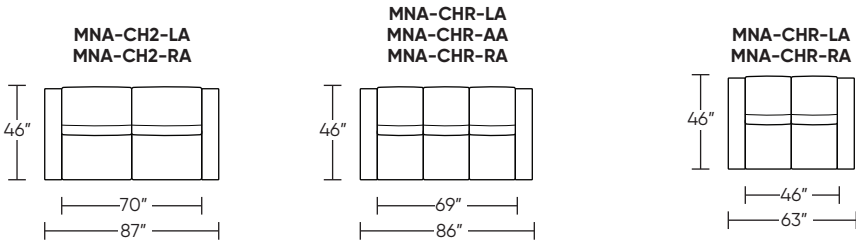
- Premium high-density, high-resiliency foam seat cushions
- Advanced unidirectional suspension system
- Double-needle top-stitch and single-needle top-stitch with thick thread
- In-arm control panel is easy to use and includes a USB-C charging port
- Limited lifetime warranty on frame and suspension
- Ten-year warranty on mechanism
- Three-year warranty on motor and electronics
- Quick-ship delivery

#### Options:

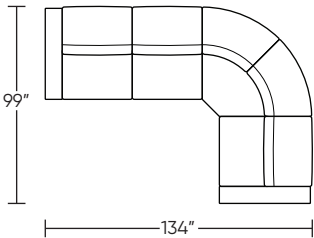
- Contrasting stitch detail available in Bermuda Green, Beige, Black, Brown, Charcoal, Cream, Espresso, Gold Brown, Grey, Lemon, Midnight Blue, and Scarlet thread color
- Lithium-ion battery pack available
- Easy disassembly for delivery
- Metal legs available in Antique Brass, Burnished Bronze, or Polished Nickel



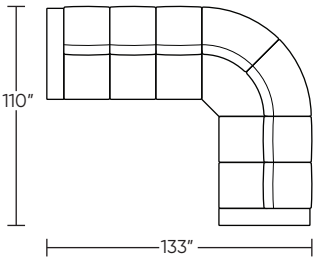
#### Suggested Configurations



MNA-CH2-LA  
MNA-CH2-AA  
MNA-CNR-ST  
MNA-CH2-RA

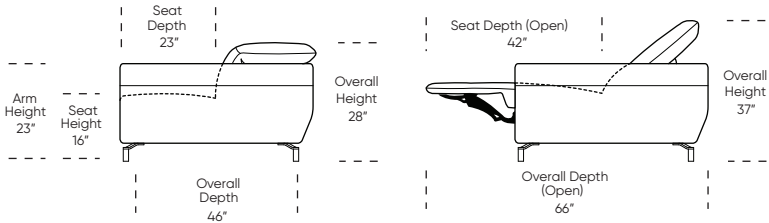


MNA-CHR-LA  
MNA-CHR-AA (3)  
MNA-CNR-ST  
MNA-CHR-RA



#### MOTION LEGEND:

- (M) = Motion only
- (NM) = No motion available



Safe low voltage electrical components are UL listed.

Scale: 1/8 inch = 1 foot  
All dimensions are approximate and subject to change.  
Specify all components from the sitting position.