



BlueWave® MX-275 LED Line-Pattern Flood-Curing Emitters

User Guide





About Dymax

Light-curable adhesives. Systems for light curing, fluid dispensing, and fluid packaging.

Dymax manufactures industrial adhesives, light-curable adhesives, epoxy resins, cyanoacrylates, and activator-cured adhesives. We also manufacture a complete line of manual fluid dispensing systems, automatic dispensing systems, and light-curing systems. Light-curing systems include LED light sources, spot, flood, and conveyor systems designed for compatibility and high performance with Dymax adhesives. Dymax adhesives and light-curing systems optimize the speed of automated assembly, allow for 100% in-line inspection, and increase throughput. System designs enable stand-alone configuration or integration into your existing assembly line.

Please note that most dispensing and curing system applications are unique. Dymax does not warrant the fitness of the product for the intended application. Any warranty applicable to the product, its application, and use is strictly limited to that contained in the Dymax standard Conditions of Sale. Dymax recommends that any intended application be evaluated and tested by the user to ensure that desired performance criteria are satisfied. Dymax is willing to assist users in their performance testing and evaluation. Data sheets are available for valve controllers or pressure pots upon request.

Contents

Introduction	4
Where to Get Help.....	4
Safety	4
Product Overview	5
Description of BlueWave MX-275 Emitters	5
Unpacking.....	6
Parts Included	6
Installation	6
Important Information.....	6
Mounting/Connections.....	7
Operation.....	8
Troubleshooting & Maintenance	9
Product Cleaning and Care.....	10
Glass Window Replacement	10
Spare Parts	11
Compatible Devices	12
Specifications	13
Declaration of Conformity	14
Warranty	16

Introduction

This guide describes how to set up, use, and maintain BlueWave® MX-275 emitters safely and efficiently.

Intended Audience

This user guide is meant for experienced process engineers, technicians, and manufacturing personnel. If you are new to high-intensity LED light sources and do not understand the instructions, contact Dymax Application Engineering for answers to your questions before using the equipment.

Where to Get Help

Dymax Customer Support and Application Engineering teams are available by phone in the United States, Monday through Friday, from 8:00 a.m. to 5:30 p.m. Eastern Standard Time. You can also email Dymax at info@dymax.com. Contact information for additional Dymax locations can be found on the back cover of this user guide. For more information about this product, visit dymax.com.

Safety



WARNING! Under NO circumstances should the interconnect cable from the controller to the LED emitter be connected or disconnected while power to the unit is on. This procedure is usually called “hot swapping” and should not be performed as it could cause damage to the controller or the emitter. Always power down the equipment before disconnecting or connecting any of these devices.



WARNING! If you use this UV LED light source without first reading and understanding the information in the UV Light Safety Guide, SAF001, injury can result from exposure to high-intensity light. To reduce the risk of injury, please read and ensure you understand the information in that guide before assembling and operating the Dymax UV LED light source.



Specific Safety statements for this device:

This device falls under IEC 62471 Risk Group 3 for UVA and Blue Light Emissions:

WARNING. *UV emitted from this product. Avoid eye and skin exposure to unshielded products.*

WARNING. *Possibly hazardous optical radiation emitted from this product. Do not look at operating lamp. Eye injury may result.*

Product Overview

Description of BlueWave MX-275 Emitters

- When paired with a MX-series controller, BlueWave MX-275 emitters function as line-pattern flood curing systems with 5 mm x 50 mm (0.2" x 2") active curing areas.
- The BlueWave MX-275 emitter is air cooled using an axial fan.
- The BlueWave MX-275 emitter can be mounted using one of two-hole patterns in the housing body.

Figure 1.
BlueWave MX-275 Emitter
(RediCure® Version Show)



Unpacking

Upon arrival, inspect all boxes for damage and notify the shipper of box damage immediately. Open each box and check for equipment damage. If parts are damaged, notify the shipper and submit a claim for the damaged parts. Contact Dymax so that new parts can be shipped to you immediately.



WARNING! *Until the BlueWave MX-275 emitter is attached to a controller via the interconnect cable it is susceptible to ESD damage, handle according to ESD standards using a ground strap and do not touch exposed connector pins.*

The parts below are included in every package/order. If parts are missing from your order, contact your local Dymax representative or Dymax Customer Support to resolve the problem.

Parts Included

- LED Emitter Assembly
- User Guide

Installation

The BlueWave MX-275 emitter is part of a BlueWave® MX-series curing system and requires connection to a controller via an interconnect cable for proper operation.

Important Information

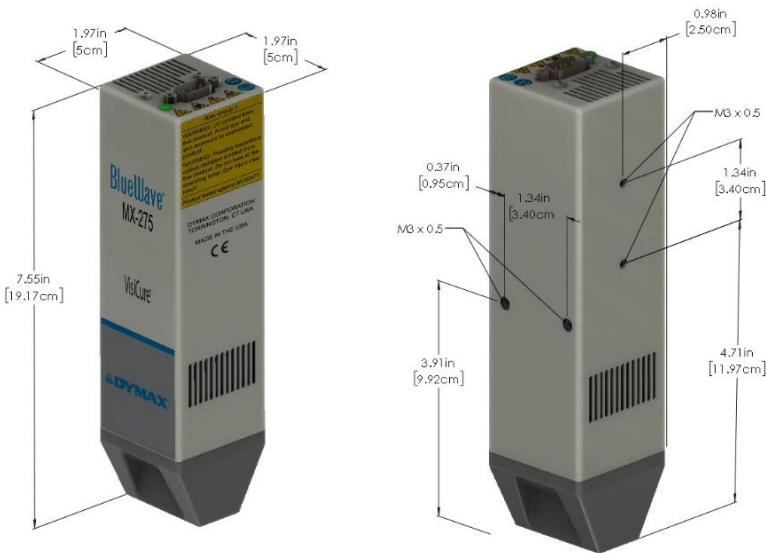
- Do not connect any components while power is applied.
- Mount the BlueWave MX-275 emitter to a rigid support, such as the emitter stand PN 42390, prior to connecting the interconnect cable to prevent handling damage.
- Do not touch the emitter aperture glass. This can result in poor performance and broken glass due to heating. Inspect before each use and clean with isopropyl alcohol if contaminated.

- If emitter aperture glass is permanently contaminated it must be replaced for safe operation.

Mounting/Connections

- Each emitter has two sets of M3 x 0.5 mm holes (Figure 2) that align with Dymax stands and holders.
- When connecting the emitter to the controller, ensure proper strain relief to prevent pinching or kinking of the interconnect cable.
- The cooling air intake on top of unit must be free flowing, do not cover.
- Exhausting air on the sides must be given at least 1 mm (0.04") of clear space to obstructions for safe use.

Figure 2.
BlueWave MX-275 Emitter Dimensions



When mounting multiple emitters side-by-side (

- **Figure 3)** maintain 1 mm (0.04") of clear space between units. The outermost units must have 20 mm (0.8") clear space from obstructions for safe use.

Figure 3.
Example of Installation Using Array Stand



Operation

- The BlueWave MX-275 emitter, when attached to the appropriate controller, will create a fan noise during startup and during high output operation. This is normal and is not of concern unless there is a temperature warning on the controller.
- Always verify proper light shielding is in place prior to starting to process using the emitter.
- The green status LED on the top of the unit may be observed directly to indicate the emitter is commanded to be on.



WARNING! Looking directly at the high-intensity light emitted by the BlueWave MX-series emitters can result in eye injury. To prevent eye injury, never look directly at the energy-emitting end of the high-intensity emitter and always wear protective goggles. To avoid accidental exposure, always point the emitter at the curing substrate.

Troubleshooting & Maintenance

Problem	Possible Cause	Corrective Action
BlueWave MX-275 LED does not produce light	LED intensity adjustment set to 0% or too low	Increase LED intensity setting.
	LED cycle time is set to 0 seconds	0 Seconds sets manual mode and requires a trigger.
	Interlock is open	Verify interlock jumpers are in place. Verify PLC command structure for PLC mode.
	Interface cable connections loose or damaged	Check connections and condition of interface cable.
	Trigger setting not matched to input.	Trigger setting on admin screen should match the desired input trigger channel.
	LED head is not connected to the correct port/channel	Verify that the head is connected to the desired port/channel.
BlueWave MX-275 LED suddenly stops producing light	Over-temperature shutdown was triggered	Verify alarms.
	Footswitch defective	Activate unit using the front control panel. Replace the footswitch if the unit operates from the front control panel.
	Interlock is open.	Verify interlock jumpers are in place. Verify PLC command structure for PLC mode.
BlueWave MX-275 LED provides only low-intensity light	LED intensity adjustment set to minimum	Increase LED intensity setting on admin settings or I/O input for PLC mode.
	Contaminated/dirty lens optics	Clean the surface of the lens.

Product Cleaning and Care

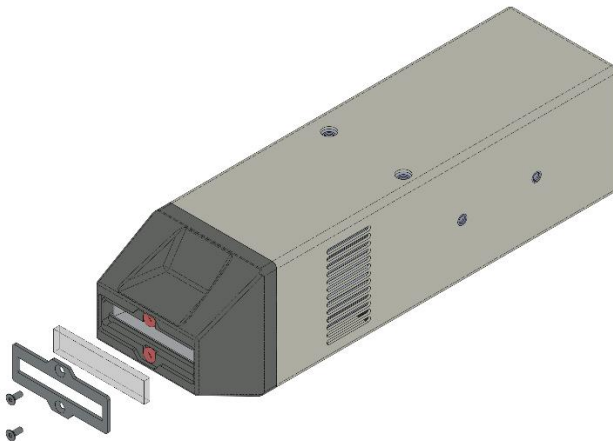
- Product cleaning is limited to wiping the product with a damp cloth. Do not soak. Isopropanol Alcohol or household cleaners may be used for cleaning the product.
- Always inspect the quartz window for cleanliness before use. Foreign material can cause permanent damage to the window. Clean with Isopropanol Alcohol to remove smudges or foreign material. Damaged or permanently etched windows should be replaced.
- Do not use compressed air to removed particle debris inside the emitter as it may damage the high-speed cooling fan.

Glass Window Replacement

(Kit 43362)

1. Before starting, disconnect power to the unit.
2. Lay the emitter on its side with the cover facing forward. Using a Philips #1 screwdriver, loosen and fully remove the two screws (Figure 4).
3. Remove the glass retaining plate being careful not to lose the O-rings.

Figure 4.
Remove Screws



NOTE: If the old window has shattered, be sure to remove all debris before attempting to install the new glass window.

4. Wearing vinyl or cotton gloves unwrap the new window and carefully clean with the enclosed alcohol swab. Holding the window by its sides lay it into the cavity of the emitter. Take care not to touch the glass with bare hands, as any residue left on the window can adversely affect the performance of the unit.
5. Clean the glass retaining plate removed in Step 3.
6. Locate and place the O-rings into the emitter nose pockets prior to installing the glass retaining plate.
7. Assemble the two screws removed in Step 2 and lightly tighten.

Spare Parts

Item	Part Number
BlueWave MX-275 Emitter Glass Replacement Kit	43362

Compatible Devices

Item	Part Number
Controllers	
BlueWave® MX Series 2-Channel Controller/Power Supply - US	43185
BlueWave® MX Series 4-Channel Controller/Power Supply - US	43182
Emitters	
BlueWave MX-275, RediCure® (365 nm)	43094
BlueWave MX-275, PrimeCure® (385 nm)	43098
BlueWave MX-275, VisiCure® (405 nm)	43102
System Components	
Interconnect Cable Assembly - 12 Inches	43453
Interconnect Cable Assembly - 2 Meter	42287
Interconnect Cable Assembly - 5 Meter	42889
Extended Interconnect Cable - 10 Meter*	43010
Extended Interconnect Cable - 20 Meter*	43011
Radiometer	
ACCU-CAL™ 50-LED Radiometer	40505
Stands	
Array Stand	43070
Single Emitter Mounting Stand	42390
Dual Emitter Mounting Bracket for MX Controller	60868
Personal Protection Equipment	
Three-Sided Acrylic Shield	41395
Protective Goggles — Green	35286
Protective Goggles — Gray (standard model included with unit)	35285
Face Shield	35186

*Intended for machine installation only.

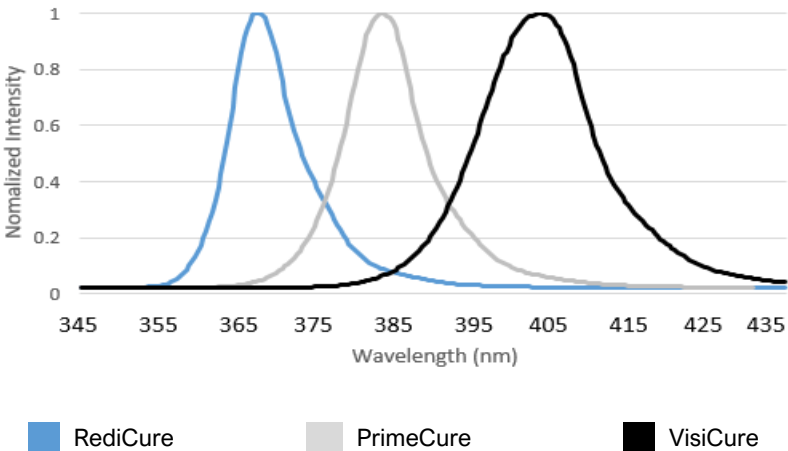
Specifications



Property	Specification		
Emitter	RediCure	PrimeCure	VisiCure
Output Frequency	365 nm	385 nm	405 nm
Intensity Output*			
10-mm Work Distance	1,460 mW/cm ²	1,870 mW/cm ²	1,750 mW/cm ²
25-mm Work Distance	960 mW/cm ²	1,220 mW/cm ²	1,100 mW/cm ²
Emitter Dimensions (W x D x H)	1.97" x 1.97" x 7.55" [5 cm x 5 cm x 19.2 cm]		
Weight	Emitter: 1.64 lbs. (0.74 kg)		
Unit Warranty	1 year from purchase date		
Operating Environment	10°C to 40°C (50°F to 104°F), 0-80% relative humidity, non-condensing		

* Measured using a Dymax ACCU-CAL™ 50-LED Radiometer with 3-mm aperture prototype. This is preliminary intensity data for reference, tests using flood mode without an aperture will yield different results.

Figure 5.
BlueWave MX Series Spectral Output



Declaration of Conformity

Figure 6.

Declaration of Conformity - CE



EU Declaration of Conformity

Manufacturer:
Dymax Corporation
318 Industrial Lane
Torrington CT 06790, USA

Product description:
Model name(s):

BlueWave ® MX-275 LED Liner Curing System
BlueWave ® MX-275 LED Emitter

This product complies with the following relevant Union Harmonization Legislation:

Applicable EU Directives:
Electromagnetic Compatibility Directive(2014/30/EU)

Low Voltage Directive(2014/35/EU)

RoHS Directive 2011/65/EU (2015/863)

Applicable Harmonized Standards:
EN55011:2016/A1:2017/A11:2020
EN 61000-3-2:2014 Class A
EN 61000-3-3:2013
EN 61326-1:2013
EN 61010-1:2010 AMD1:2019
EN IEC 63000:2018

Declaration:
This declaration of conformity is issued under the sole responsibility of the manufacturer.
Signed for and on behalf of:

 3/26/2025 Torrington, CT
Name Date Location

CE


Authorized Signatory:
Robert Gallagher
Engineering Manager, Equipment
Dymax Corporation
Torrington CT., USA


www.dymax.com

North America: +1 860 482 1010 | Europe: +49 611 962 7900 | Asia: +65 67522887

© 2021-2022 Dymax Corporation. All rights reserved. All trademarks in this guide, except where noted, are the property of, or used under license by Dymax Corporation, U.S.A.
Please note that model numbering and naming conventions are unique. Dymax does not warrant the fitness of the product for the intended application. Requirements necessary in the product, its installation and use in order to ensure that the product is a Dymax product. Declaration of Sale. Dymax warrants that any material adaptation to the equipment and used by the user to ensure the device performs as intended. Dymax is willing to hold users in their performance testing and evaluation for offering equipment that meets and testing programs to assure its suitability and reliability. Our users are included for other customers or pressure points upon request.

Figure 7.
Declaration of Conformity - UKCA



UK Declaration of Conformity

Manufacturer:
Dymax Corporation
318 Industrial Lane
Torrington CT 06790, USA

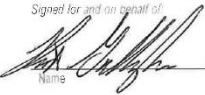
Product description:
Model name(s):

BlueWave® MX-275™ LED Line Curing System
BlueWave® MX-275™ LED Emitter

This product complies with the following relevant UK legislation:

<p>Applicable UK Legislation: Electromagnetic Compatibility Regulations 2016</p> <p>Electrical Equipment Safety Regulations 2016</p> <p>The Restriction of the Use of Certain Hazardous Substances in Electrical And Electronic Equipment Regulations 2012</p> <p>Other Regulatory Compliance</p>	<p>Applicable Harmonized Standards: EN55011:2016/A1:2017-A1:2020 EN 61000-3-2:2014 Class A EN 61000-3-3:2013 EN 61326-1:2013 EN 61010-1:2010 (3rd Edition)</p> <p>EN IEC 63000:2018</p> <p>Photo-biological Safety IEC 62471 (2006)</p>
--	---

Declaration:
This declaration of conformity is issued under the sole responsibility of the manufacturer.
Signed for and on behalf of:



6/26/2025


Date

Torrington, CT USA

Location

**UK
CA**

Authorized Signatory:
Robert Gallagher
Engineering Manager, Equipment
Dymax Corporation
Torrington CT., USA



North America +1 800.402.1010 | Europe +49 611 967 7900 | Asia +85 67522887

© 2020-2025 Dymax Corporation. All rights reserved.
Please recycle this document and curing system. Recycle responsibly.

www.dymax.com

Warranty

From date of purchase, Dymax Corporation offers a one-year warranty against defects in material and workmanship on all system components with proof of purchase and purchase date. Unauthorized repair, modification, or improper use of equipment may void your warranty benefits. The use of aftermarket replacement parts not supplied or approved by Dymax Corporation, will void any effective warranties and may result in damage to the equipment.

IMPORTANT NOTE: DYMAX CORPORATION RESERVES THE RIGHT TO INVALIDATE ANY WARRANTIES, EXPRESSED OR IMPLIED, DUE TO ANY REPAIRS PERFORMED OR ATTEMPTED ON DYMAX EQUIPMENT WITHOUT WRITTEN AUTHORIZATION FROM DYMAX. THOSE CORRECTIVE ACTIONS LISTED ABOVE ARE LIMITED TO THIS AUTHORIZATION.

Index

- Cleaning, 10
- Compatible Devices, 12
- Components, 5
- Declaration of Conformity, 14
- Glass Window Replacement, 10
- Help, 4
- Installation, 6
- Maintenance, 9
- Operation, 8
- Parts List, 6
- Product Overview, 5
- Safety, 4
- Spare Parts, 11
- Specifications, 13
- Spectral Output, 13
- Support, 4
- Troubleshooting, 9
- Unpacking, 5
- Warranty, 16

Americas: +1.860.482.1010 | Europe: +49 611.962.7900 | Asia: +65.67522887



www.dymax.com

© 2019-2025 Dymax Corporation. All rights reserved. All trademarks in this guide, except where noted, are the property of, or used under license by Dymax Corporation, U.S.A.

Please note that most curing system applications are unique. Dymax does not warrant the fitness of the product for the intended application. Any warranty applicable to the product, its application and use is strictly limited to that contained in Dymax standard Conditions of Sale published on our website. Dymax recommends that any intended application be evaluated and tested by the user to ensure that desired performance criteria are satisfied. Dymax is willing to assist users in their performance testing and evaluation by offering equipment trial rental and leasing programs to assist in such testing and evaluations.
MAN093 7/3/2025