

pattern name	number	page
adore	3558	4
align	3520	4
allude	3812	23
aspire	3559	4
bangkok	3565	5
bella	3539	5
blended	3840	23
bomber jacket	3839	24
brisa	3802	24
cadence	3506	5
cameo	3465	6
canvas	3837	24
cherish	3560	6
chunky	3551	6
cielo	3536	7
classic fit	3556	7
crafted wool	3564	7
crosshatch	3547	8
daybreak	3530	8
delight	3561	8
diffuse	3528	9
elan	3111	26
element	3495	9
emerge	3838	25
essential	3113	26
fresca	3540	9
hendese	3515	10
hero	3463	10
image	3799	25
imprint	3508	10
istanbul	3566	11
kavir	3518	11
kumasi	3568	11

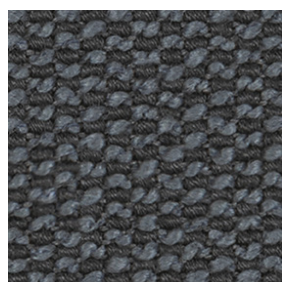
pattern name	number	page
london	3114	26
loop	3519	12
midnight	3534	12
mirage	3529	12
muse	3454	13
nightfall	3533	13
océane	3491	13
patina	3537	14
pearl	3490	14
perfect plaid	3562	14
pix	3509	15
plush	3550	15
pocket square	3555	15
random	3524	16
rogue	3110	26
roma	3567	16
sella	3542	16
sereno	3538	17
sketch	3548	17
smooth	3552	17
snug	3546	18
soft	3553	18
soft spun	3563	18
solo	3505	19
still	3544	19
stitch	3426	19
tailored	3557	20
twilight	3532	20
valencia	3295	20
vella	3554	21
venture	3484	21
vista	3525	21
vivid	3523	22

number	pattern name	page
3110	rogue	26
3111	elan	26
3113	essential	26
3114	london	26
3295	valencia	20
3426	stitch	19
3454	muse	13
3463	hero	10
3465	cameo	6
3484	venture	21
3490	pearl	14
3491	océane	13
3495	element	9
3505	solo	19
3506	cadence	5
3508	imprint	10
3509	pix	15
3515	hendese	10
3518	kavir	11
3519	loop	12
3520	align	4
3523	vivid	22
3524	random	16
3525	vista	21
3528	diffuse	9
3529	mirage	12
3530	daybreak	8
3532	twilight	20
3533	nightfall	13
3534	midnight	12
3536	cielo	7
3537	patina	14
3538	sereno	17

number	pattern name	page
3539	bella	5
3540	fresca	9
3542	sella	16
3544	still	19
3546	snug	18
3547	crosshatch	8
3548	sketch	17
3550	plush	15
3551	chunky	6
3552	smooth	17
3553	soft	18
3554	vella	21
3555	pocket square	15
3556	classic fit	7
3557	tailored	20
3558	adore	4
3559	aspire	4
3560	cherish	6
3561	delight	8
3562	perfect plaid	14
3563	soft spun	18
3564	crafted wool	7
3565	bangkok	5
3566	istanbul	11
3567	roma	16
3568	kumasi	11
3799	image	25
3802	brisa	24
3812	allude	23
3837	canvas	24
3838	emerge	25
3839	bomber jacket	24
3840	blended	23

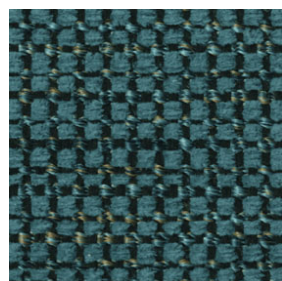
pattern name specifications number description net price per yard

adore



Application	Upholstery	3558-000	Ali	\$91.00
Content	42% Wool, 23% Cotton, 19% Viscose, 13% Linen, 3% Polyester	3558-020	Liv	
		3558-027	Ella	
Width	54"	3558-002	Willow	
Repeat	None	3558-022	Everly	
Weight per Linear Yard	22.0 Ounces	3558-010	Mia	
Finish	None	3558-014	Isla	
Abrasion	49,000 Double Rubs Wyzenbeek	3558-008	Ava	
Flammability	California TB 117-2013	3558-003	Gemma	
	UFAC, Class 1		Sustainable	
	NFPA 260, Class 1			
Sustainability	SCS Indoor Advantage™ Gold			
	FR Free, LBC Red List Free			
Cleaning Code	S - Dry Clean Only			
Bernhardt Design	Seating Grade 10			
Origin	Italy			

align



Design	Teri Figliuzzi	3520-000	Chalk	\$42.00
Application	Upholstery	3520-010	Mist	
Content	59% Polyester, 36% Olefin, 5% Recycled Polyester (3% Post-Industrial, 2% Post-Consumer)	3520-011	Storm	
		3520-001	Carbon	
		3520-020	Amber	
Width	55½"	3520-055	Citron	
Repeat	Vertical: ¼", Horizontal: ¼"	3520-003	Aloe	
Weight Per Linear Yard	17.79 Ounces	3520-033	Fir	
Finish	Acrylic Backing, PFAS Free Stain Resistant	3520-043	Pacific	
		3520-044	Cobalt	
Abrasion	84,000 Double Rubs Wyzenbeek*	3520-068	Berry	
Flammability	California TB 117-2013	3520-066	Carmine	
	UFAC, Class 1	3520-077	Sumac	
	NFPA 260, Class 1		Performance	
Sustainability	SCS Indoor Advantage™ Gold			
	FR Free, LBC Red List Free			
Cleaning Code	WS		Bleach cleanable with 10:1 water/household bleach solution that must be extracted within 30 seconds	
Bernhardt Design	Seating Grade 1			
Origin	United States			

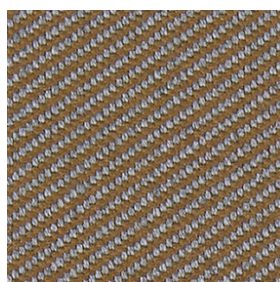
aspire



Application	Upholstery	3559-000	Dreamy	\$113.00
Content	34% Viscose, 18% Cotton, 16% Acrylic, 13% Wool, 12% Linen, 4% Polyester, 3% Nylon	3559-010	Nimbus	
		3559-002	Tranquil	
		3559-020	Moondust	
Width	54"			
Repeat	None			
Weight per Linear Yard	36.08 Ounces			
Finishes	None			
Abrasion	100,000 Double Rubs Wyzenbeek			
Flammability	California TB 117-2013			
	UFAC, Class 1			
	NFPA 260, Class 1			
Sustainability	SCS Indoor Advantage™ Gold			
	FR Free, LBC Red List Free			
Cleaning Code	S - Dry Clean Only			
Bernhardt Design	Seating Grade 10			
Origin	Belgium			

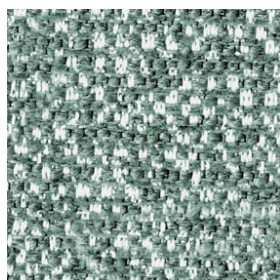
pattern name specifications number description net price per yard

bangkok



Design	Nana Boateng	3565-900	White	\$80.00
Application	Upholstery	3565-902	Ivory	
Content	33% Wool, 27% Viscose, 22% Cotton,	3565-922	Caramel	
	12% Linen, 6% Polyester	3565-921	Greige	
Width	55"	3565-910	Charcoal	
Repeat	None	3565-901	Noir	
Weight per Linear Yard	15.63 Ounces		Sustainable	
Finish	None			
Abrasion	62,000 Double Rubs Wyzenbeek			
Flammability	California TB 117-2013			
	UFAC, Class 1			
	NFPA 260, Class 1			
Sustainability	SCS Indoor Advantage™ Gold			
	Rapidly Renewable, FR Free			
	LBC Red List Free			
Cleaning Code	S - Dry Clean			
Bernhardt Design	Seating Grade 8			
Origin	Italy			

bella



Design	Teri Figliuzzi	3539-910	Silver	\$81.00
Application	Upholstery	3539-912	Stone	
Content	43% Viscose, 19% Polyacrylic,	3539-902	Taupe	
	18% Polyester, 16% Cotton, 4% Linen	3539-955	Sun	
		3539-933	Vine	
Width	55"	3539-943	Lake	
Repeat	None	3539-934	Azure	
Weight per Linear Yard	25.36 Ounces	3539-944	Navy	
Finish	Light Acrylic Backing	3539-988	Plum	
Abrasion	94,000 Double Rubs Wyzenbeek*	3539-908	Rose	
	California TB 117-2013	3539-977	Terra	
	UFAC, Class 1	3539-925	Amber	
Flammability	NFPA 260, Class 1			
	SCS Indoor Advantage™ Gold			
	PFAS Free, FR Free, LBC Red List Free			
Cleaning Code	S - Dry Clean			
Bernhardt Design	Seating Grade 8			
Origin	Italy			

cadence



Design	Tift Merritt	3506-900	Birch	\$69.00
Application	Upholstery	3506-977	Cinnabar	
Content	63% Polyester, 37% Acrylic	3506-902	Bay	
Width	54"			
Repeat	Vertical: 17 1/8", Horizontal: 0"			
Weight per Linear Yard	16.69 Ounces			
Finish	None			
Abrasion	64,000 Double Rubs Wyzenbeek*			
Flammability	California TB 117-2013			
	UFAC, Class 1			
	NFPA 260, Class 1			
Sustainability	SCS Indoor Advantage™ Gold			
	PFAS Free, FR Free			
Cleaning Code	WS			
Bernhardt Design	Seating Grade 5			
Origin	Turkey			

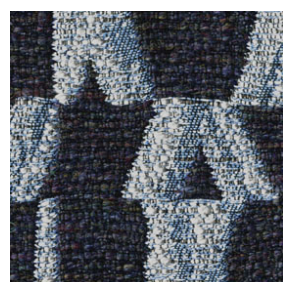
pattern name specifications number description net price per yard

cameo



Design	Teri Figliuzzi	3465-000	Dove	\$127.00
Application	Upholstery	3465-002	Taupe	
Content	60% Wool, 25% Viscose, 14% Polyamide, 1% Cotton	3465-020	Fawn	
Width	54"	3465-005	Citrus	
Repeat	None	3465-053	Sprout	
Weight per Linear Yard	20.5 Ounces	3465-003	Aloe	
Finish	Acrylic Backing	3465-043	Lagoon	
Abrasion	74,000 Cycles Martindale*	3465-004	Lake	
Flammability	California TB 117-2013 UFAC, Class 1 NFPA 260, Class 1	3465-007	Persimmon	
Sustainability	SCS Indoor Advantage™ Gold, Rapidly Renewable, PFAS Free, FR Free, LBC Red List Free			
Cleaning Code	S			
Bernhardt Design	Seating Grade 11			
Origin	Belgium			

capture



Design	Teri Figliuzzi	3507-901	Shadow	\$91.00
Application	Upholstery	3507-912	Sahara	
Content	29% Rayon, 23% Wool, 18% Nylon, 16% Post-Consumer Recycled Polyester, 14% Polyester	3507-911	Charcoal	
Width	54"	3507-903	Moss	
Repeat	Vertical: 9¼", Horizontal: 13¾"	3507-943	Lagoon	
Weight per Linear Yard	26.03 Ounces	3507-944	Midnight	
Finish	Acrylic Backing	3507-988	Blackberry	
Abrasion	100,000 Double Rubs Wyzenbeek*	3507-977	Rust	
Flammability	California TB 117-2013 UFAC, Class 1 NFPA 260, Class 1			
Sustainability	SCS Indoor Advantage™ Gold PFAS Free, FR Free, LBC Red List Free			
Cleaning Code	S			
Bernhardt Design	Seating Grade 10			
Origin	United States			

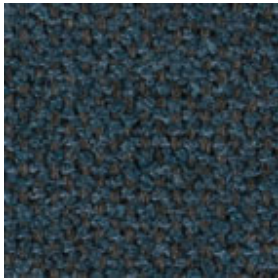
cherish



Application	Upholstery	3560-002	Theo	\$50.00
Content	71% Polyester, 20% Polypropylene, 9% Cotton	3560-020	Aspen	
Width	55"	3560-022	Max	
Repeat	None	3560-010	Finn	
Weight per Linear Yard	17.1 Ounces	3560-011	Grier	
Finishes	None	3560-001	Beck	
Abrasion	100,000 Double Rubs Wyzenbeek	3560-044	Tate	
Flammability	California TB 117-2013 UFAC, Class 1 NFPA 260, Class 1	3560-008	Ridge	
Sustainability	SCS Indoor Advantage™ Gold FR Free	3560-077	Riley	
Cleaning Code	S	3560-033	Leo	
Bernhardt Design	Seating Grade 2			
Origin	Spain			

pattern name specifications number description net price per yard

chunky



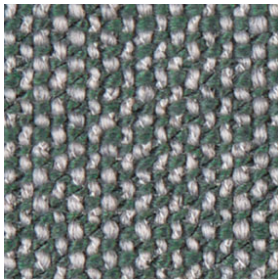
Application	Upholstery	3551-000	chalk	\$69.00
Content	65% Acrylic, 20% Polyester, 15% Cotton	3551-002	sand	
Width	54"	3551-012	taupe	
Repeat	None	3551-018	shadow	
Weight per Linear Yard	31 Ounces	3551-010	aluminum	
Finish	None	3551-101	pepper	
Abrasion	47,000 Double Rubs Wyzenbeek*	3551-014	carbon	
Flammability	California TB 117-2013	3551-076	rust	
	UFAC, Class 1	3551-033	forest	
	NFPA 260, Class 1	3551-044	twilight	
Sustainability	SCS Indoor Advantage™ Gold, PFAS Free, FR Free, LBC Red List Free	Dye lots may vary		
Cleaning Code	S			
Bernhardt Design	Seating Grade 5			
Origin	Italy			

cielo

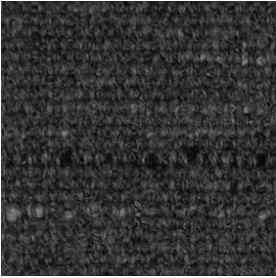
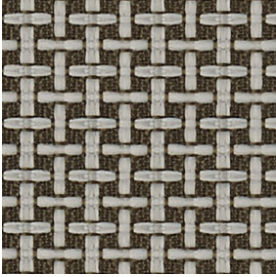
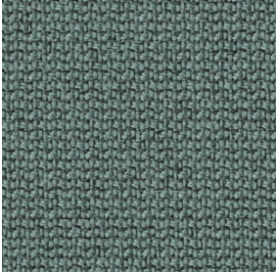


Design	Teri Figliuzzi	3536-000	Cloud	\$71.00
Application	Upholstery, Wrapped Panel	3536-010	Fog	
Content	92% Wool, 8% Polyester	3536-011	Night	
Width	55"	3536-022	Branch	
Repeat	None	3536-055	Sun	
Weight per Linear Yard	21.26 Ounces	3536-033	Seagrass	
Finish	None	3536-044	Dusk	
Abrasion	100,000 Cycles Martindale*	3536-066	Sunset	
Flammability	California TB 117-2013	3536-077	Flame	
	UFAC, Class 1	Sustainable		
	NFPA 260, Class 1	Dye lots may vary		
Sustainability	ASTM E84, Unadhered Class 2 SCS Indoor Advantage™ Gold Rapidly Renewable, PFAS Free, FR Free			
Cleaning Code	S - Dry Clean			
Bernhardt Design	Seating Grade 6			
Origin	Turkey			

classic fit

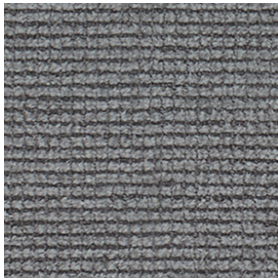


Application	Upholstery	3556-002	Khaki	\$39.00
Content	90% Polyester, 10% Cotton	3556-020	Wool Coat	
Width	55"	3556-022	Oxford Brown	
Repeat	None	3556-050	Gold Hoop	
Weight per Linear Yard	29.44 Ounces	3556-080	Pink Sweater	
Finish	Acrylic Backing	3556-010	Silk Blouse	
Abrasion	100,000 Double Rubs Wyzenbeek	3556-004	Blue Cardigan	
Flammability	California TB 117-2013	3556-030	Green Tee	
	UFAC, Class 1	3556-044	Jean Jacket	
	NFPA 260, Class 1	3556-001	Black Blazer	
Sustainability	SCS Indoor Advantage™ Gold PFAS Free, FR Free, LBC Red List Free			
Cleaning Code	W			
Bernhardt Design	Seating Grade 1			
Origin	China			

pattern name	specifications	number	description	net price per yard
crafted wool				
	Application	Upholstery	3564-902 Bamboo	\$96.00
	Content	65% Wool, 15% Cotton, 8% Acrylic, 7% Polyester, 5% Viscose	3564-977 Copper	
	Width	59"	3564-944 Stonewash	
	Repeat	None	3564-910 Eclipse	
	Weight per Linear Yard	17.25 Ounces	3564-911 Licorice	
	Finish	None	Sustainable	
	Abrasion	100,000 Double Rubs Wyzenbeek		
	Flammability	California TB 117-2013 UFAC, Class 1 NFPA 260, Class 1		
	Sustainability	SCS Indoor Advantage™ Gold Rapidly Renewable, PFAS Free, FR Free, LBC Red List Free		
	Cleaning Code	S		
	Bernhardt Design	Seating Grade 10		
	Country of Origin	Italy		
crosshatch				
	Design	Teri Figliuzzi	3547-902 Ash	\$45.00
	Application	Upholstery, Wrapped Panel	3547-910 Mica	
	Content	100% Polyester	3547-903 Mineral	
	Width	54"	3547-904 Sky	
	Repeat	Vertical: 3/8", Horizontal: 1/2"	3547-922 Taupe	
	Weight per Linear Yard	16.25 Ounces	3547-968 Blush	
	Finish	Acrylic Backing, DEFEND® Free	3547-912 Iron	
	Abrasion	100,000 Double Rubs Wyzenbeek*	3547-901 Granite	
	Flammability	California TB 117-2013 UFAC Class 1, NFPA 260, Class 1	Performance	
	Sustainability	ASTM E84, Unadhered Class 2 SCS Indoor Advantage™ Gold, PFAS Free, FR Free, LBC Red List Free	Bleach cleanable with 4:1 water/household bleach solution that must be extracted within 30 seconds	
	Cleaning Code	WS		
	Bernhardt Design	Seating Grade 1		
Origin	United States			
daybreak				
	Design	Farg & Blanche	3530-001 Obsidian	\$49.00
	Application	Upholstery, Direct Glue Wall	3530-003 Sage	
	Content	98% Post-Consumer Recycled Polyester, 2% Polyester	3530-004 Lake	
	Width	55"	3530-008 Blush	
	Repeat	None	3530-010 Storm	
	Weight per Linear Yard	13.55 Ounces	3530-020 Bark	
	Finish	Acrylic Backing, DEFEND® Free	3530-022 Twig	
	Abrasion	100,000 Double Rubs Wyzenbeek*	3530-025 Amber	
	Flammability	California TB 117-2013 UFAC, Class 1, NFPA 260, Class 1	3530-030 Olive	
	Sustainability	ASTM E84, Adhered Class 1 SCS Indoor Advantage™ Gold Recycled Content, FR Free, LBC Red List Free	3530-033 Forest	
	Cleaning Code	W	3530-040 Steel	
	Bernhardt Design	Seating Grade 2	3530-043 Sea	
Origin	Denmark	3530-044 Pacific		
		3530-052 Ochre		
		3530-066 Crimson		
		3530-077 Sunset		
		3530-300 Grass		
		3530-444 Indigo		

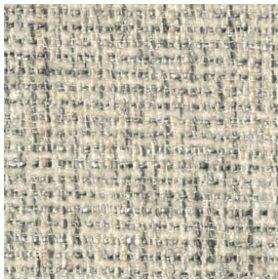
pattern name specifications number description net price per yard

delight



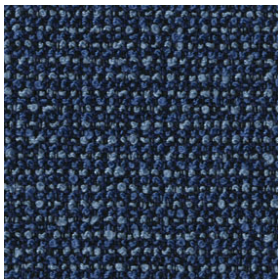
Application	Upholstery	3561-000	Creamy	\$40.00
Content	85% Recycled Polyester, 15% Polyester	3561-002	Oatmeal	
Width	54"	3561-020	Cream Soda	
Repeat	None	3561-012	Cocoa	
Weight per Linear Yard	13.0 Ounces	3561-022	Cola	
Finish	Acrylic Backing, PFAS Free Stain Resistant	3561-010	Silver Dollar	
		3561-011	Onyx	
Abrasion	84,000 Double Rubs Wyzenbeek	3561-008	Misty Rose	
Flammability	California TB 117-2013	3561-082	Honeybun	
	UFAC, Class 1	3561-077	Marmalade	
	NFPA 260, Class 1	3561-066	Cinnamon	
Sustainability	SCS Indoor Advantage™ Gold	3561-080	Periwinkle	
	Recycled Content,	3561-040	Poolside	
	PFAS Free, FR Free,	3561-044	Juniper	
	LBC Red List Free	3561-003	Pistachio	
Cleaning Code	WS		Sustainable	
Bernhardt Design	Seating Grade 1			
Origin	Canada			

diffuse



Design	Teri Figliuzzi	3528-000	Chalk	\$49.00
Application	Upholstery	3528-008	Blush	
Content	70% Acrylic, 30% Polyester	3528-035	Bamboo	
Width	55"	3528-020	Fawn	
Repeat	None	3528-012	Dust	
Weight per Linear Yard	18.5 Ounces	3528-010	Mist	
Finish	PFAS Free Stain Resistant	3528-004	Slate	
Abrasion	100,000 Double Rubs Wyzenbeek*	3528-022	Granite	
Flammability	California TB 117-2013	3528-011	Carbon	
	UFAC, Class 1	3528-044	Midnight	
	NFPA 260, Class 1	3528-088	Plum	
Sustainability	SCS Indoor Advantage™ Gold			
	PFAS Free, FR Free			
Cleaning Code	S			
Bernhardt Design	Seating Grade 2			
Origin	Turkey			

element



Design	Teri Figliuzzi	3495-000	Mist	\$59.00
Application	Upholstery, Wrapped Panel	3495-910	Cinder	
Content	100% Polyester	3495-911	Charcoal	
Width	54"	3495-902	Limestone	
Repeat	None	3495-912	Taupe	
Weight per Linear Yard	17.04 Ounces	3495-922	Twig	
Finish	Acrylic Backing, DEFEND® Free	3495-955	Amber	
Abrasion	100,000 Double Rubs Wyzenbeek*	3495-903	Bamboo	
Flammability	California TB 117-2013	3495-933	Hedge	
	UFAC, Class 1,	3495-904	Surf	
	NFPA 260, Class 1	3495-944	Cobalt	
	ASTM E84, Unadhered Class 1	3495-977	Cayenne	
Sustainability	SCS Indoor Advantage™ Gold	3495-907	Tangelo	
	FR Free, LBC Red List Free		Performance	
Cleaning Code	WS			
Bernhardt Design	Seating Grade 4		Bleach cleanable with 5:1 water/household bleach solution that must be extracted within 30 seconds	
Origin	United States			

pattern name	specifications	number	description	net price per yard
--------------	----------------	--------	-------------	--------------------

focus

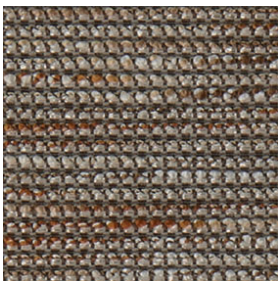


Application	Upholstery, Wrapped Panel	3470-010	Mica	\$79.00
Content	100% Wool	3470-110	Silver	
Width	55"	3470-100	Smoke	
Repeat	None	3470-011	Shadow	
Weight per Linear Yard	23.6 Ounces	3470-111	Cinder	
Finish	None	3470-101	Charcoal	
Abrasion	100,000 Cycles Martindale*	3470-002	Limestone	
Flammability	California TB 117-2013 UFAC, Class 1, NFPA 260, Class 1	3470-020	Fawn	
Sustainability	SCS Indoor Advantage™ Gold Rapidly Renewable, PFAS Free, FR Free, LBC Red List Free	3470-200	Bison	
		3470-055	Citrus	
		3470-003	Aloe	
		3470-033	Hedge	
		3470-030	Sprout	
Cleaning Code	S	3470-300	Grass	
Bernhardt Design	Seating Grade 7	3470-043	Lagoon	
		3470-004	Sky	
		3470-040	Bluebird	
		3470-044	Twilight	
		3470-088	Royalty	
		3470-086	Plum	
		3470-080	Orchid	
		3470-066	Poppy	
		3470-060	Crimson	
		3470-061	Cerise	
		3470-077	Zest	
		3470-070	Siren	
		3470-076	Cayenne	
		3470-075	Paprika	
				3470-075

Sustainable

Dye lots may vary

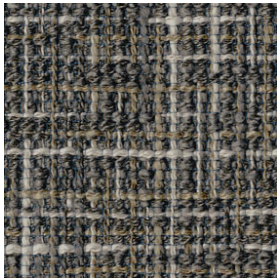
forte



Design	Tift Merritt	3502-900	Birch	\$100.00
Application	Upholstery	3502-902	Fawn	
Content	37% Cotton, 25% Acrylic, 19% Polyamide, 13% Viscose, 6% Polyester	3502-903	Grass	
		3502-943	Lagoon	
		3502-988	Orchid	
		3502-968	Claret	
Width	57"	3502-976	Poppy	
Repeat	Vertical: 1/8", Horizontal: 1/8"	3502-977	Papaya	
Weight per Linear Yard	10 1/2 Ounces			
Finish	None			
Abrasion	89,000 Double Rubs Wyzenbeek*			
Primary Use	Upholstery			
Flammability	California TB 117-2013 UFAC, Class 1 NFPA 260, Class 1			
Sustainability	SCS Indoor Advantage™ Gold PFAS Free, FR Free			
Cleaning Code	S			
Bernhardt Design	Seating Grade 10			
Origin	Belgium			

pattern name specifications number description net price per yard

fresca



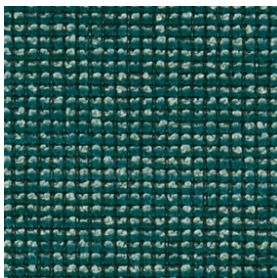
Design	Teri Figliuzzi	3540-920	Birch	\$82.00
Application	Indoor/Outdoor Upholstery, Wrapped Panel	3540-902	Mushroom	
Content	100% Polyester, (96% Post-Consumer Recycled Polyester, 4% Virgin Polyester)	3540-955	Sun	
Width	53"	3540-925	Amber	
Repeat	Vertical: 19½", Horizontal: 13½"	3540-943	Sky	
Weight per Linear Yard	20.52 Ounces	3540-922	Bark	
Finish	Antimicrobial Backing, DEFEND® Free	3540-911	Night	
Abrasion	74,000 Double Rubs Wyzenbeek*	3540-944	Dusk	
Flammability	California TB 117-2013	3540-966	Sunset	
	UFAC, Class 1		Sustainable	
	NFPA 260, Class 1		Performance	
	ASTM E84, Unadhered Class 1			
Sustainability	SCS Indoor Advantage™ Gold Recycled Content, Antimicrobial, PFAS Free, FR Free, LBC Red List Free		Bleach cleanable with 10:1 water/household bleach solution that must be extracted within 30 seconds	
Cleaning Code	WS			
Bernhardt Design	Seating Grade 8			
Origin	United States			

hendese



Design	Taher Asad-Bakhtiari	3515-000	Desert	\$74.00
Application	Upholstery	3515-010	Cinder	
Content	56% Cotton, 20% Solution Dyed Nylon, 14% Virgin Polyester, 10% Post-Consumer Recycled Polyester	3515-014	Slate	
Width	52"	3514-033	Grassland	
Repeat	Vertical: ½", Horizontal: ¾"	3515-004	Deep Sea	
Weight per Linear Yard	23.12 Ounces	3515-044	Sapphire	
Finish	Acrylic Backing, DEFEND® Free	3515-066	Sumac	
Abrasion	100,000 Double Rubs Wyzenbeek*	3515-068	Sunset	
Flammability	California TB 117-2013	3515-077	Copper	
	UFAC, Class 1	3515-002	Spice	
	NFPA 260, Class 1		Sustainable	
Sustainability	SCS Indoor Advantage™ Gold Rapidly Renewable, FR Free LBC Red List Free			
Cleaning Code	S			
Bernhardt Design	Seating Grade 7			
Origin	United States			

hero



Design	Teri Figliuzzi	3463-002	Sand	\$73.00
Application	Upholstery	3463-052	Amber	
Content	70% Polyester, 30% Post-Consumer Recycled Polyester	3463-072	Brick	
Width	54"	3463-022	Espresso	
Repeat	None	3463-033	Verde	
Weight per Linear Yard	21.25 Ounces	3463-035	Sprout	
Finish	Acrylic Backing, DEFEND® Free	3463-043	Surf	
Abrasion	100,000 Double Rubs Wyzenbeek*	3463-044	Twilight	
Flammability	California TB 117-2013	3463-088	Plum	
	UFAC, Class 1	3463-067	Poppy	
	NFPA 260, Class 1	3463-010	Shadow	
Sustainability	SCS Indoor Advantage™ Gold, Fr Free, LBC Red List Free	3463-011	Carbon	
			Performance	
Cleaning Code	WS		Texture may vary	
Bernhardt Design	Seating Grade 6			
Origin	United States		Bleach cleanable with 5:1 water/household bleach solution that must be extracted within 30 seconds	

pattern name specifications number description net price per yard

imprint



Design	Teri Figliuzzi	3508-000	Canvas	\$114.00
Application	Upholstery	3508-002	Birch	
Content	42% Polyacrylic, 18% Cotton, 14% Viscose, 13% Polyester, 7% Wool, 6% Linen	3508-022	Cocoa	
		3508-020	Sahara	
		3508-010	Ash	
Width	54"	3508-012	Shark	
Repeat	None	3508-011	Graphite	
Weight per Linear Yard	32.55 Ounces			
Finish	None			
Abrasion	100,000 Double Rubs Wyzenbeek*			
Flammability	California TB 117-2013 UFAC, Class 1 NFPA 260, Class 1			
Sustainability	SCS Indoor Advantage™ Gold, PFAS Free, FR Free, LBC Red List Free			
Cleaning Code	S			
Bernhardt Design	Seating Grade 11			
Origin	Italy			

ink



Design	Chrissa Amuah	3541-922	Woodland	\$53.00
Application	Upholstery	3541-904	Steel	
Content	88% Polyester, 12% Solution Dyed Nylon	3541-943	Cypress	
Width	57½"	3541-944	Dusk	
Repeat	Vertical: 18½", Horizontal: 14½"		Performance	
Weight per Linear Yard	22.9 Ounces			
Finish	Acrylic Backing, Stain Resistant		Bleach cleanable with 5:1 water/household bleach	
Abrasion	94,000 Double Rubs Wyzenbeek*		solution that must be extracted within 30 seconds	
Flammability	California TB 117-2013 UFAC, Class 1 NFPA 260, Class 1			
Sustainability	SCS Indoor Advantage™ Gold FR Free, LBC Red List Free			
Cleaning Code	WS			
Bernhardt Design	Seating Grade 3			
Origin	United States			

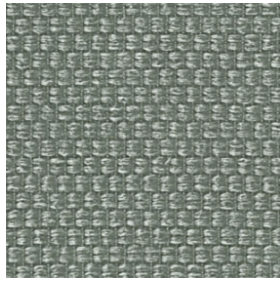
istanbul



Design	Nana Boateng	3566-000	Ivory	\$85.00
Application	Upholstery	3566-002	Merino	
Content	50% Polyester, 50% Polyacrylic Pile: 100% Cotton	3566-020	Carob	
		3566-022	Havana	
Width	56"	3566-088	Violet	
Repeat	None	3566-001	Noir	
Weight per Linear Yard	13.66 Ounces			
Finish	None			
Abrasion	50,000 Double Rubs Wyzenbeek			
Flammability	California TB 117-2013 UFAC, Class 1 NFPA 260, Class 1			
Sustainability	SCS Indoor Advantage™ Gold FR Free, LBC Red List Free			
Cleaning Code	S - Dry Clean			
Bernhardt Design	Seating Grade 8			
Origin	Germany			

pattern name	specifications	number	description	net price per yard
--------------	----------------	--------	-------------	--------------------

kavir



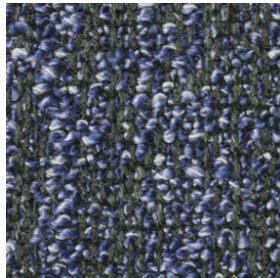
Design	Taher Asad-Bakhtiari	3518-100	Desert	\$45.00
Application	Upholstery, Wrapped Panel	3518-020	Dust	
Content	70% Virgin Polyester,	3518-030	Mineral	
	30% Post-Consumer Recycled Polyester	3518-004	Slate	
Width	54"	3518-014	Smoke	
Repeat	Vertical: ¼", Horizontal: ⅛"	3518-010	Cinder	
Weight per Linear Yard	16.0 Ounces	3518-011	Charcoal	
Finish	Acrylic Backing	3518-012	Dark Taupe	
Abrasion	100,000 Double Rubs Wyzenbeek*	3518-002	Bark	
Primary Use	Upholstery, Wrapped Panel	3518-022	Bison	
Flammability	California TB 117-2013	3518-212	Seal	
	UFAC, Class 1	3518-025	Ore	
	NFPA 260, Class 1	3518-077	Copper	
	ASTM E84, Unadhered Class 1	3518-066	Poppy	
Sustainability	SCS Indoor Advantage™ Gold	3518-068	Orchid	
	FR Free, LBC Red List Free	3518-044	Indigo	
Cleaning Code	WS	3518-043	Deep Sea	
Bernhardt Design	Seating Grade 1	3518-035	Grassland	
Origin	Canada			

kumasi



Design	Nana Boateng	3568-000	Ivory	\$93.00
Application	Upholstery, Applied Vertically	3568-002	Champagne	
Content	70% Polyester, 30% Polyacrylic,	3568-020	Truffle	
	Pile: 100% Polyacrylic	3568-022	Havana	
	Ground: 100% Polyester	3568-008	Aubergine	
Width	55"	3568-088	Violet	
Repeat	None	3568-066	Sakura	
Weight per Linear Yard	11.27 Ounces		Performance	
Finish	None			
Abrasion	100,000 Double Rubs Wyzenbeek		Bleach cleanable with 10:1 water/household bleach solution that must be extracted within 30 seconds	
Flammability	California TB 117-2013			
	UFAC, Class 1			
Sustainability	NFPA 260, Class 1			
	SCS Indoor Advantage™ Gold			
Cleaning Code	FR Free, LBC Red List Free			
Bernhardt Design	WS			
Origin	Seating Grade 10			
	Germany			

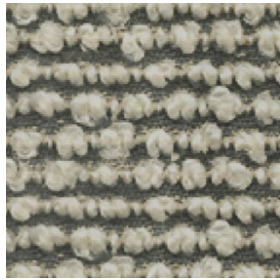
loop



Design	Teri Figliuzzi	3519-000	Limestone	\$52.00
Application	Upholstery	3519-002	Cashew	
Content	29% Polyacrylic, 24% Cotton,	3519-022	Bay	
	24% Viscose, 22% Polyester, 1% Linen	3519-010	Ash	
Width	56"	3519-011	Storm	
Repeat	None	3519-001	Granite	
Weight per Linear Yard	22.77 Ounces	3519-020	Amber	
Finish	None	3519-055	Citron	
Abrasion	100,000 Double Rubs Wyzenbeek*	3519-003	Aloe	
Flammability	California TB 117-2013	3519-033	Fir	
	UFAC, Class 1	3519-043	Pacific	
Sustainability	NFPA 260, Class 1	3519-044	Ink	
	SCS Indoor Advantage™ Gold,	3519-068	Berry	
	PFAS Free, FR Free	3519-066	Sunset	
		3519-077	Spice	
Cleaning Code	S			
Bernhardt Design	Seating Grade 3			
Origin	Turkey			

pattern name	specifications	number	description	net price per yard
--------------	----------------	--------	-------------	--------------------

muse



Design	Teri Figliuzzi	3454-000	Pearl	\$135.00
Application	Upholstery	3454-002	Dune	
Content	97% Wool, 3% Nylon	3454-022	Birch	
Width	54"	3454-010	Mica	
Repeat	Vertical: 1/2", Horizontal: 3/8"	3454-011	Cinder	
Weight per Linear Yard	25.37 Ounces	3454-001	Charcoal	
Finish	None	<i>Sustainable</i>		
Abrasion	59,000 Cycles Martindale*			
Flammability	California TB 117-2013 UFAC, Class 1 NFPA 260, Class 1			
Sustainability	SCS Indoor Advantage™ Gold Rapidly Renewable, PFAS Free, FR Free, LBC Red List Free			
Cleaning Code	S - Dry Clean Only			
Bernhardt Design	Seating Grade 11			
Origin	New Zealand			

nightfall



Design	Farg & Blanche	3533-000	Chalk	\$84.00
Application	Upholstery	3533-010	Storm	
Content	68% Cotton, 17% Nylon, 15% Polyester	3533-001	Coal	
Width	52"	3533-003	Lichen	
Repeat	Vertical: 8 5/8", Horizontal: 9 1/8"	3533-033	Forest	
Weight per Linear Yard	28.25 Ounces	3533-043	Pacific	
Finish	DEFEND® Free	3533-044	Indigo	
Abrasion	100,000 Double Rubs Wyzenbeek*	3533-066	Crimson	
Flammability	California TB 117-2013 UFAC, Class 1 NFPA 260, Class 1	<i>Sustainable</i>		
Sustainability	SCS Indoor Advantage™ Gold Rapidly Renewable, FR Free LBC Red List Free			
Cleaning Code	S			
Bernhardt Design	Seating Grade 8			
Origin	United States			

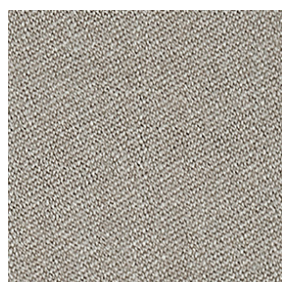
océane



Design	Océane Delain	3491-002	Taupe	\$114.00
Application	Upholstery	3491-006	Red	
Content	82% Polyamide, 18% Elastodiene	3491-001	Black	
Width	57"			
Repeat	None			
Weight per Linear Yard	14.9 Ounces			
Finish	None			
Abrasion	100,000 Double Rubs Wyzenbeek*			
Flammability	California TB 117-2013 UFAC, Class 1 NFPA 260, Class 1			
Sustainability	SCS Indoor Advantage™ Gold, FR Free			
Cleaning Code	X			
Bernhardt Design	Seating Grade 11			
Origin	France			

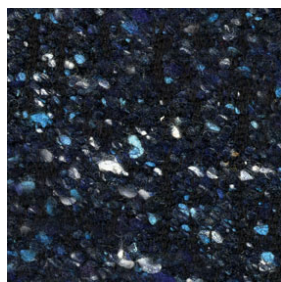
pattern name	specifications	number	description		net price per yard
--------------	----------------	--------	-------------	--	--------------------

palette



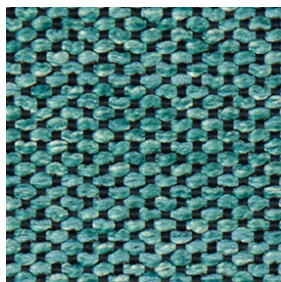
Design	Teri Figliuzzi	3549-000	Alabaster	\$69.00
Application	Upholstery, Wrapped Panel	3549-100	Ash	
Content	85% New Zealand Wool, 15% Polyamide	3549-002	Dust	
Width	55"	3549-020	Twig	
Repeat	None	3549-212	Iron	
Weight per Linear Yard	15.16 Ounces	3549-012	Mist	
Finish	None	3549-010	Cinder	
Abrasion	100,000 Cycles Martindale*	3549-101	Carbon	
Flammability	California TB 117-2013	3549-011	Storm	
	UFAC Class 1,	3549-001	Obsidian	
	NFPA 260, Class 1	3549-022	Stone	
	ASTM E84, Unadhered Class 2	3549-004	Slate	
Sustainability	SCS Indoor Advantage™ Gold	3549-014	Steel	
	Rapidly Renewable, PFAS Free,	3549-044	Indigo	
	FR Free, LBC Red List Free	3549-043	Sea	
Cleaning Code	S - Dry Clean Only	3549-034	Lagoon	
Bernhardt Design	Seating Grade 5	3549-008	Blush	
Origin	Denmark	3549-078	Clay	
		3549-068	Redwood	
		3549-077	Cider	
		3549-060	Cabernet	
			Sustainable	

patina



Design	Teri Figliuzzi	3537-901	Ash	\$101.00
Application	Upholstery	3537-910	Smoke	
Content	45% Cotton, 25% Polyester,	3537-903	Moss	
	14% Polyacrylic, 10% Wool, 6% Silk	3537-922	Bark	
Width	57"	3537-935	Pollen	
Repeat	None	3537-943	Azure	
Weight per Linear Yard	24.18 Ounces	3537-944	Dusk	
Finish	None	3537-988	Wine	
Abrasion	100,000 Double Rubs Wyzenbeek*	3537-966	Carmine	
Flammability	California TB 117-2013			
	UFAC, Class 1			
	NFPA 260, Class 1			
Sustainability	SCS Indoor Advantage™ Gold			Dye lots may vary
	Rapidly Renewable, PFAS Free,			
	FR Free, LBC Red List Free			
Cleaning Code	S - Dry Clean Only			
Bernhardt Design	Seating Grade 10			
Origin	Italy			

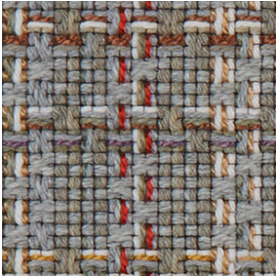
pearl



Design	Anabela Chan	3490-000	Quartz	\$66.00
Application	Upholstery, Wrapped Panel	3490-010	Mica	
Content	100% Polyester	3490-011	Pyrite	
Width	54"	3490-100	Onyx	
Repeat	None	3490-002	Moonstone	
Weight per Linear Yard	17.78 Ounces	3490-020	Bronzite	
Finish	Light Acrylic Backing,	3490-200	Jasper	
	PFAS Free Stain Resistant	3490-003	Emerald	
Abrasion	100,000 Double Rubs Wyzenbeek*	3490-043	Turquoise	
Flammability	California TB 117-2013	3490-088	Amethyst	
	UFAC, Class 1,	3490-066	Ruby	
	NFPA 260, Class 1			
	ASTM E84, Unadhered Class 1			Texture may vary
Sustainability	SCS Indoor Advantage™ Gold			
	FR Free LBC Red List Free			
Cleaning Code	WS			
Bernhardt Design	Seating Grade 5			
Origin	Turkey			

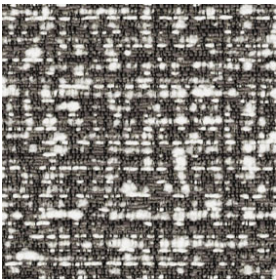
pattern name	specifications	number	description	net price per yard
--------------	----------------	--------	-------------	--------------------

perfect plaid



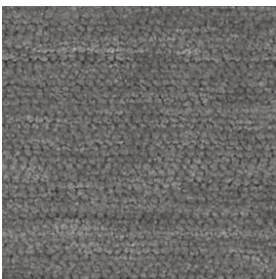
Application	Upholstery	3562-902	Whitewash	\$81.00
Content	50% Recycled Cotton, 24% Rayon, 12% Post Consumer Polyester, 11% Wool, 3% Nylon	3562-922	Brownstone	
		3562-903	Stratus	
		3562-904	Periwinkle	
		3562-901	Limo	
Width	53½"			
Repeat	Vertical: 26", Horizontal: 26"			
Weight per Linear Yard	28.68 Ounces		Sustainable	
Finish	Light Acrylic Backing			
Abrasion	100,000 Double Rubs Wyzenbeek			
Flammability	California TB 117-2013 UFAC, Class 1 NFPA 260, Class 1			
Sustainability	SCS Indoor Advantage™ Gold Rapidly Renewable, Recycled Content, PFAS Free, FR Free, LBC Red List Free			
Cleaning Code	S			
Bernhardt Design	Seating Grade 8			
Country of Origin	USA			

pix



Design	Teri Figliuzzi	3509-900	Dust	\$59.00
Application	Upholstery	3509-902	Mushroom	
Content	83% Polyester, 17% Nylon	3509-922	Walnut	
Width	57"	3509-910	Shadow	
Repeat	Vertical: 25⅞", Horizontal: 7⅞"	3509-911	Graphite	
Weight per Linear Yard	21.48 Ounces	3509-933	Lichen	
Finish	Acrylic Backing, PFAS Free Stain Resistant	3509-943	Scuba	
Abrasion	100,000 Double Rubs Wyzenbeek*	3509-944	Cobalt	
Flammability	California TB 117-2013 UFAC, Class 1 NFPA 260, Class 1	3509-988	Berry	
		3509-977	Chili	
Sustainability	SCS Indoor Advantage™ Gold FR Free, LBC Red List Free		Performance	
Cleaning Code	WS		Bleach cleanable with 5:1 water/household bleach solution that must be extracted within 30 seconds	
Bernhardt Design	Seating Grade 4			
Origin	United States			

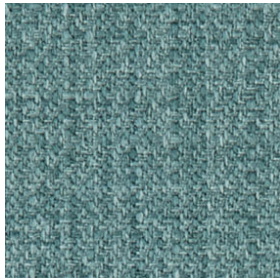
plush



Application	Upholstery	3550-000	Chalk	\$67.00
Content	100% Polyester	3550-002	Mushroom	
Width	55"	3550-022	Taupe	
Repeat	None	3550-001	Shadow	
Weight per Linear Yard	22 Ounces	3550-010	Aluminum	
Finish	None	3550-066	Mahogany	
Abrasion	100,000 Double Rubs Wyzenbeek*	3550-033	Forest	
Flammability	California TB 117-2013 UFAC, Class 1 NFPA 260, Class 1	3550-040	Charcoal	
Sustainability	SCS Indoor Advantage™ Gold PFAS Free, FR Free, LBC Red List Free		Dye lots may vary	
Cleaning Code	S			
Bernhardt Design	Seating Grade 5			
Origin	Italy			

pattern name specifications number description net price per yard

pocket square



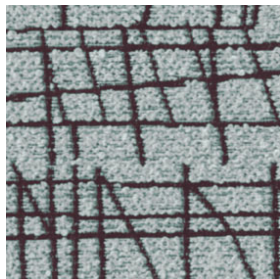
Application	Upholstery	3555-000	Pearl	\$34.00
Content	100% Polyester	3555-002	Champagne	
Width	55"	3555-022	Sun Kissed	
Repeat	None	3555-020	Bourbon	
Weight per Linear Yard	13.8 oz.	3555-043	Peacock	
Finish	Acrylic Backing, Nano-Tex®	3555-044	Lapis	
Abrasion	100,000 Double Rubs Wyzenbeek	3555-004	Baby Blue	
Flammability	California TB 117-2013 UFAC, Class 1 NFPA 260, Class 1	3555-010	Silver Fox	
		3555-011	Sterling	
		3555-001	Heathered	
Sustainability	SCS Indoor Advantage™ Gold PFAS Free, FR Free		Performance	
Cleaning Code	W		Bleach cleanable with 10:1 water/household bleach	
Bernhardt Design	Seating Grade 1		solution that must be extracted within 30 seconds.	
Origin	China			

posh



Design	Teri Figliuzzi	3392-000	Birch	\$166.00
Application	Upholstery	3392-002	Camel	
Content	Face: 100% Alpaca Back: 73% Polyester, 27% Viscose	3392-022	Bison	
Width	54"	3392-200	Espresso	
Repeat	None	3392-010	Cinder	
Weight per Linear Yard	21.14 Ounces	3392-001	Night	
Finish	None		Sustainable	
Abrasion	100,000 Double Rubs Wyzenbeek*			
Flammability	California TB 117-2013 UFAC, Class 1 NFPA 260, Class 1			
Sustainability	SCS Indoor Advantage™ Gold Rapidly Renewable, FR Free, LBC Red List Free			
Cleaning Code	X			
Bernhardt Design	Seating Grade 11			
Origin	Belgium			

random



Design	Teri Figliuzzi	3524-000	Chalk	\$65.00
Application	Upholstery	3524-025	Straw	
Content	77% Polyester, 23% Solution Dyed Nylon	3524-003	Lichen	
Width	54"	3524-014	Slate	
Repeat	Vertical: 25¼", Horizontal: 28"	3524-004	Sky	
Weight per Linear Yard	18.71 Ounces	3524-044	Midnight	
Finish	Acrylic Backing, DEFEND® Free	3524-001	Carbon	
Abrasion	100,000 Double Rubs Wyzenbeek*	3524-010	Shadow	
Flammability	California TB 117-2013 UFAC, Class 1; NFPA 260, Class 1	3524-068	Berry	
Sustainability	SCS Indoor Advantage™ Gold FR Free, LBC Red List Free		Performance	
Cleaning Code	WS		Bleach cleanable with 4:1 water/household bleach	
Bernhardt Design	Seating Grade 5		solution that must be extracted within 30 seconds	
Origin	United States			

pattern name specifications number description net price per yard

roma



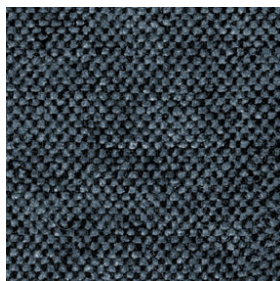
Design	Nana Boateng	3567-000	Ivory	\$91.00
Application	Upholstery	3567-002	Champagne	
Content	30% Viscose, 27% Polyester, 16% Cotton,	3567-008	Carob	
	12% Wool, 12% Acrylic, 3% Nylon	3567-020	Merino	
Width	54"	3567-010	Dusty Grey	
Repeat	None	3567-001	Noir	
Weight per Linear Yard	16.87 Ounces			
Finish	None			
Abrasion	69,000 Double Rubs Wyzenbeek			
Flammability	California TB 117-2013			
	UFAC, Class 1			
	NFPA 260, Class 1			
Sustainability	SCS Indoor Advantage™ Gold			
	FR Free, LBC Red List Free			
	REACH Compliant			
Cleaning Code	S			
Bernhardt Design	Seating Grade 10			
Origin	Italy			

sella



Design	Chrissa Amuah	3542-900	Dust	\$77.00
Application	Upholstery	3542-904	Sky	
Content	55% Polyester, 34% Post-Consumer	3542-944	Cobalt	
	Recycled Polyester, 11% Solution	3542-977	Brick	
	Dyed Nylon	3542-955	Sun	
Width	56¾"		Performance	
Repeat	Vertical: 25¼", Horizontal: 28½"			
Weight per Linear Yard	27.8 Ounces		Bleach cleanable with 5:1 water/household bleach	
Finish	Acrylic Backing, Stain Resistant		solution that must be extracted within 30 seconds	
Abrasion	100,000 Double Rubs Wyzenbeek*			
Flammability	California TB 117-2013			
	UFAC, Class 1			
	NFPA 260, Class 1			
Sustainability	SCS Indoor Advantage™ Gold			
	FR Free, LBC Red List Free			
Cleaning Code	WS			
Bernhardt Design	Seating Grade 7			
Origin	United States			

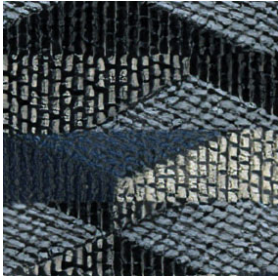
sereno



Design	Teri Figliuzzi	3538-010	Ash	\$71.00
Application	Upholstery, Wrapped Panel	3538-011	Night	
Content	56% Polyester, 32% Polyacrylic, 12% Wool	3538-020	Taupe	
		3538-022	Sand	
Width	57"	3538-025	Ochre	
Repeat	None	3538-033	Sprout	
Weight per Linear Yard	8.43 Ounces	3538-034	Jade	
Finish	None	3538-043	Lake	
Abrasion	100,000 Double Rubs Wyzenbeek*	3538-044	Dusk	
Flammability	California TB 117-2013	3538-055	Sun	
	UFAC, Class 1	3538-066	Sunset	
	NFPA 260, Class 1	3538-088	Fig	
	ASTM E84, Unadhered Class 2			
Sustainability	SCS Indoor Advantage™ Gold			
	PFAS Free, FR Free, LBC Red List Free		Dye lots may vary	
Cleaning Code	S - Dry Clean Only			
Bernhardt Design	Seating Grade 6			
Origin	Italy			

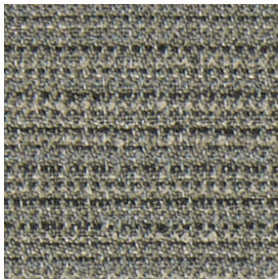
pattern name	specifications	number	description		net price per yard
--------------	----------------	--------	-------------	--	--------------------

shift



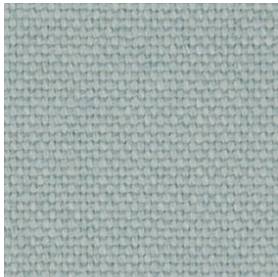
Design	Teri Figliuzzi	3496-901	Dust	\$86.00
Application	Upholstery	3496-902	Cashew	
Content	36% Rayon, 30% Cotton, 20% Nylon, 14% Polyester	3496-903	Lemongrass	
Width	53"	3496-913	Cactus	
Repeat	Vertical: 13¼", Horizontal: 13¾"	3496-943	Slate	
Weight per Linear Yard	24.06 Ounces	3496-904	Scuba	
Finish	Acrylic Backing, DEFEND® Free	3496-988	Blackberry	
Abrasion	99,000 Double Rubs Wyzenbeek*	3496-921	Bay	
Flammability	California TB 117-2013 UFAC, Class 1 NFPA 260, Class 1	3496-966	Chili	
Sustainability	SCS Indoor Advantage™ Gold FR Free, LBC Red List Free			
Cleaning Code	S			
Bernhardt Design	Seating Grade 8			
Origin	United States			

sketch



Design	Teri Figliuzzi	3548-902	Birch	\$48.00
Application	Upholstery, Wrapped Panel	3548-925	Bamboo	
Content	100% Polyester	3548-934	Sprout	
Width	54"	3548-904	Slate	
Repeat	Vertical: 9¾", Horizontal: 6¾"	3548-910	Mica	
Weight per Linear Yard	15.38 Ounces	3548-912	Taupe	
Finish	Acrylic Backing, DEFEND® Free	3548-920	Bark	
Abrasion	100,000 Double Rubs Wyzenbeek*	3548-921	Stone	
Flammability	California TB 117-2013 UFAC, Class 1, NFPA 260, Class 1	3548-987	Iron	
	ASTM E84, Unadhered Class 2	3548-944	Indigo	
Sustainability	SCS Indoor Advantage™ Gold PFAS Free, FR Free, LBC Red List Free			Performance Bleach cleanable with 4:1 water/household bleach solution that must be extracted within 30 seconds
Cleaning Code	WS			
Bernhardt Design	Seating Grade 2			
Origin	United States			

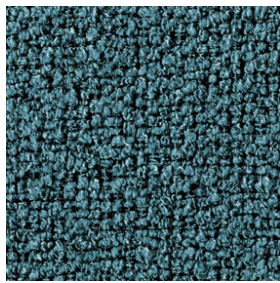
smooth



Application	Upholstery	3552-000	Chalk	\$63.00
Content	55% Recycled Acrylic, 25% Polyester 20% Recycled Wool	3552-002	Sand	
Width	58"	3552-012	Khaki	
Repeat	None	3552-020	Mushroom	
Weight per Linear Yard	24 Ounces	3552-022	Taupe	
Finish	None	3552-001	Midnight	
Abrasion	100,000 Double Rubs Wyzenbeek*	3552-010	Platinum	
Flammability	California TB 117-2013 UFAC, Class 1 NFPA 260, Class 1	3552-011	Aluminum	
	SCS Indoor Advantage™ Gold	3552-101	Carbon	
Sustainability	Recycled Content, FR Free, LBC Red List Free	3552-066	Ruby	
		3552-068	Mahogany	
Cleaning Code	S	3552-076	Rust	
Bernhardt Design	Seating Grade 4	3552-030	Olive	
Origin	Italy	3552-033	Forest	
		3552-043	Ocean	
		3552-004	Powder	
		3552-040	Slate	
		3552-044	Denim	
			Sustainable	
			Dye lots may vary	

pattern name specifications number description net price per yard

snug



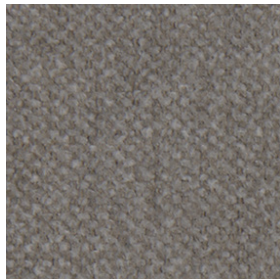
Design	Chrissa Amuah	3546-012	Mushroom	\$91.00
Application	Upholstery, Wrapped Panel	3546-022	Woodland	
Content	100% Polyester	3546-033	Hedge	
Width	55"	3546-003	Aloe	
Repeat	None	3546-040	Deep Sea	
Weight per Linear Yard	30 Ounces	3546-044	Cobalt	
Finish	Light Acrylic Backing	3546-077	Cayenne	
Abrasion	100,000 Double Rubs Wyzenbeek*	3546-035	Pollen	
Flammability	California TB 117-2013	Performance		
	UFAC, Class 1	Bleach cleanable with 10:1 water/household bleach solution that must be extracted within 30 seconds		
	NFPA 260, Class 1			
	ASTM E84, Unadhered Class 1			
Sustainability	SCS Indoor Advantage™ Gold			
	PFAS Free, FR Free, LBC Red List Free			
Cleaning Code	WS			
Bernhardt Design	Seating Grade 10			
Origin	Italy			

soft


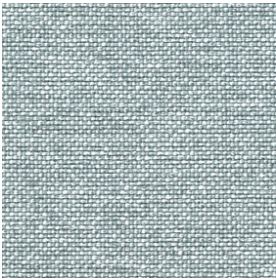



Application	Upholstery	3553-000	pearl	\$69.00
Content	100% Acrylic	3553-002	sand	
Width	55"	3553-020	mushroom	
Repeat	None	3553-022	taupe	
Weight per Linear Yard	25 Ounces	3553-012	greige	
Finish	None	3553-001	midnight	
Abrasion	100,000 Double Rubs Wyzenbeek*	3553-014	carbon	
Primary Use	Upholstery	3553-066	mahogany	
Flammability	California TB 117-2013	3553-078	melon	
	UFAC, Class 1	3553-077	rust	
	NFPA 260, Class 1	3553-043	aqua	
Sustainability	SCS Indoor Advantage™ Gold	3553-044	denim	
	PFAS Free, FR Free, LBC Red List Free	Dye lots may vary		
Cleaning Code	S			
Bernhardt Design	Seating Grade 5			
Origin	Italy			



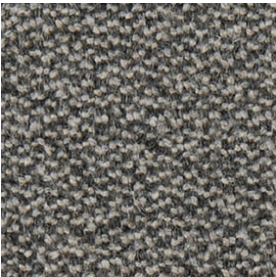
soft spun



Application	Upholstery	3563-000	Bisque	\$53.00
Content	79% Polyester, 15% Cotton, 6% Acrylic	3563-010	Drizzle	
Width	55"	3563-110	Marble	
Repeat	None	3563-022	Roasted	
Weight per Linear Yard	13.04 Ounces	3563-011	Koala	
Finish	Easy Clean - PFAS Free	3563-001	Evening	
Abrasion	99,000 Double Rubs Wyzenbeek	3563-044	Blueprint	
Flammability	California TB 117-2013	3563-088	Wild Orchid	
	UFAC, Class 1	3563-066	Rustic Rose	
	NFPA 260, Class 1	3563-077	Cider	
Sustainability	SCS Indoor Advantage™ Gold	3563-003	Pesto	
	PFAS Free, FR Free, LBC Red List Free			
Cleaning Code	S			
Bernhardt Design	Seating Grade 3			
Country of Origin	Italy			

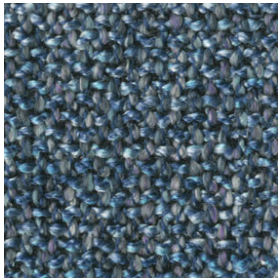
pattern name	specifications	number	description	net price per yard		
solo						
	Design	Tift Merritt	3505-000	Birch	\$49.00	
	Application	Upholstery	3505-002	Fawn		
	Content	84% Polyester, 16% Acrylic	3505-010	Ash		
	Width	57"	3505-011	Graphite		
	Repeat	None	3505-012	Kohl		
	Weight per Linear Yard	18.55 Ounces	3505-020	Stone		
	Finish	None	3505-022	Bay		
	Abrasion	100,000 Double Rubs Wyzenbeek*	3505-101	Cinder		
	Flammability	California TB 117-2013 UFAC, Class 1	3505-004	Cloud		
		NFPA 260, Class 1	3505-044	Midnight		
Sustainability	SCS Indoor Advantage™ Gold PFAS Free, FR Free, LBC Red List Free	3505-066	Poppy	Texture may vary		
Cleaning Code	WS					
Bernhardt Design	Seating Grade 2					
Origin	China					
still						
	Design	Chrissa Amuah	3544-010	Ash	\$50.00	
	Application	Upholstery	3544-100	Smoke		
	Content	72% Post-Consumer Recycled Polyester, 28% Virgin Polyester	3544-001	Coal		
	Width	54"	3544-200	Fawn		
	Repeat	None	3544-020	Taupe		
	Weight per Linear Yard	15 Ounces	3544-222	Woodland		
	Finish	Acrylic Backing, PFAS Free Stain Resistant	3544-030	Hedge		
	Abrasion	100,000 Double Rubs Wyzenbeek*	3544-033	Forest		
	Flammability	California TB 117-2013 UFAC, Class 1	3544-043	Azure		
		NFPA 260, Class 1	3544-444	Ink		
Sustainability	SCS Indoor Advantage™ Gold Recycled Content, FR Free LBC Red List Free	3544-004	Sky			
		3544-040	Bluebird			
		3544-044	Cobalt			
		3544-088	Berry			
		3544-066	Wine			
		3544-072	Yam			
Cleaning Code	WS	3544-077	Spice			
Bernhardt Design	Seating Grade 2	3544-055	Sun			
Origin	Canada			Sustainable		
stitch						
	Design	Kiki Van Eijk + Joost Van Bleiswijk	3426-900	String	\$69.00	
	Application	Upholstery	3426-910	Mica		
	Content	53% Polyester, 47% Recycled Polyester (22% Post-Consumer, 25% Post-Industrial)	3426-944	Ink		
			3426-988	Plum		
	Width	58"				Performance
	Repeat	Vertical: 9¾", Horizontal: 7½"				Bleach cleanable with 5:1 water/household bleach solution that must be extracted within 30 seconds
	Weight per Linear Yard	24.32 Ounces				
	Finish	Acrylic Backing				
	Abrasion	80,000 Double Rubs Wyzenbeek*				
	Flammability	California TB 117-2013 UFAC, Class 1				
	NFPA 260, Class 1					
Sustainability	SCS Indoor Advantage™ Gold FR Free, LBC Red List Free					
Cleaning Code	WS					
Bernhardt Design	Seating Grade 5					
Origin	United States					

pattern name	specifications	number	description	net price per yard	
tailored					
	Application	Upholstery	3557-902	Dusty Blonde	\$89.00
	Content	44% Viscose, 29% Polyester, 27% Cotton	3557-928	Toasted Apricot	
	Width	55"	3557-962	Blushed Chestnut	
	Repeat	None	3557-987	Faded Rose	
	Weight per Linear Yard	21.05 oz.	3557-952	Golden Peach	
	Finishe	None	3557-922	Brassed Brown	
	Abrasion	44,000 Double Rubs Wyzenbeek	3557-943	Minted Green	
	Flammability	California TB 117-2013 UFAC, Class 1	3557-914	Iced Blue	
		NFPA 260, Class 1	3557-944	Denim Grey	
		SCS Indoor Advantage™ Gold	3557-988	Chromed Lavender	
		PFAS Free, FR Free, LBC Red List Free	3557-901	Silver Grey	
			3557-912	Frosted Ink	
	Cleaning Code	S			
	Bernhardt Design	Seating Grade 9			
Origin	Italy				
twilight					
	Design	Farg & Blanche	3532-925	Bark	\$91.00
	Application	Upholstery	3532-912	Twig	
	Content	49% Polyester, 32% Cotton, 16% Polyacrylic, 3% Polyamide	3532-910	Storm	
	Width	56"	3532-911	Obsidian	
	Repeat	Vertical: 22%", Horizontal: 13¼"	3532-903	Lichen	
	Weight per Linear Yard	30 Ounces	3532-930	Aloe	
	Finish	None	3532-943	Sea	
	Abrasion	100,000 Double Rubs Wyzenbeek*	3532-944	Dusk	
	Flammability	California TB 117-2013 UFAC, Class 1	3532-966	Crimson	
		NFPA 260, Class 1		Dye lots may vary	
		SCS Indoor Advantage™ Gold			
		PFAS Free, FR Free			
	Cleaning Code	S			
	Bernhardt Design	Seating Grade 10			
Origin	Italy				
urban					
	Design	Teri Figliuzzi	3448-002	Limestone	\$54.00
	Application	Upholstery, Direct Glue Wall, Wrapped Panel	3448-100	Mica	
	Content	100% Post-Consumer Recycled Polyester	3448-010	Shadow	
	Width	54"	3448-001	Charcoal	
	Repeat	None	3448-040	Slate	
	Weight per Linear Yard	16 Ounces	3448-044	Cobalt	
	Finish	Acrylic Backing, PFAS Free Stain Resistant	3448-043	Pool	
	Abrasion	95,000 Double Rubs Wyzenbeek*	3448-033	Grass	
	Flammability	California TB 117-2013 UFAC, Class 1,	3448-300	Sprout	
		NFPA 260, Class 1	3448-003	Lime	
		ASTM E84, Adhered & Unadhered Class 1	3448-025	Sun	
		SCS Indoor Advantage™ Gold	3448-077	Zest	
		Recycled Content, FR Free, LBC Red List Free	3448-072	Siren	
			3448-066	Poppy	
			3448-008	Punch	
	Cleaning Code	WS			
	Bernhardt Design	Seating Grade 3			
	Origin	Canada			

pattern name	specifications	number	description	net price per yard		
valencia						
	Application	Upholstery	3295-002 Pine Bark	\$163.00		
	Content	Face: 100% Mohair Back: 100% Cotton	3295-008 Cinder 3295-043 Oil Blue			
	Width	54"	3295-004 Crown Blue			
	Repeat	None	3295-044 Mood Indigo			
	Weight per Linear Yard	29 Ounces	3295-444 Midnight Navy			
	Finish	None	3295-001 Phantom			
	Abrasion	100,000 Double Rubs Wyzenbeek*	3295-018 Shale			
	Primary Use	Upholstery	3295-022 Olive Brown			
	Flammability	California TB 117-2013 UFAC, Class 1 NFPA 260, Class 1	Sustainable Dye lots may vary			
	Sustainability	SCS Indoor Advantage™ Gold Rapidly Renewable, PFAS Free, FR Free, LBC Red List Free				
	Cleaning Code	X				
	Bernhardt Design	Seating Grade 11				
	Origin	Netherlands				
	vella					
		Application	Upholstery, Wrapped Panel		3554-000 Buttercream	\$53.00
Content		100% Polyester	3554-002 Bisque			
Width		54"	3554-021 Putty			
Repeat		None	3554-020 Cobblestone			
Weight Per Linear Yard		20 Ounces	3554-026 Chestnut			
Finish		Soil and Stain Repellent	3554-055 Dijon			
Abrasion		95,000 Double Rubs Wyzenbeek	3554-077 Ember			
Flammability		California TB 117-2013 UFAC, Class 1 NFPA 260, Class 1	3554-066 Beet 3554-080 Blush 3554-028 Bison			
Sustainability		ASTM E84, Unadhered Class 1 SCS Indoor Advantage™ Gold PFAS Free, FR Free	3554-022 Malt 3554-033 Jasper 3554-030 Forest			
Cleaning Code		S	3554-044 Admiral			
Bernhardt Design		Seating Grade 3	3554-040 Bombay			
Origin		United States	3554-034 Ocean 3554-004 Sky 3554-018 Slate 3554-008 Thistle 3554-010 Ashen 3554-011 Chrome 3554-001 Peppercorn			
venture						
		Design	Teri Figliuzzi	3484-901 Shadow	\$94.00	
		Application	Upholstery, Wrapped Panel	3484-911 Charcoal		
		Content	75% Wool, 15% Alpaca, 10% Polyamide	3484-922 Bison		
		Width	54"	3484-955 Citrus		
		Repeat	None	3484-903 Aloe		
		Weight per Linear Yard	21.1 Ounces	3484-933 Grass		
		Finish	None	3484-943 Ocean		
		Abrasion	99,000 Cycles Martindale*	3484-904 Twilight		
		Flammability	California TB 117-2013 UFAC, Class 1, NFPA 260, Class 1	3484-944 Royal 3484-988 Orchid 3484-966 Rouge		
	Sustainability	ASTM E84, Unadhered Class 1 SCS Indoor Advantage™ Gold Rapidly Renewable, FR Free LBC Red List Free	3484-967 Cayenne 3484-977 Persimmon Sustainable			
	Cleaning Code	X				
	Bernhardt Design	Seating Grade 10				
	Origin	Italy				

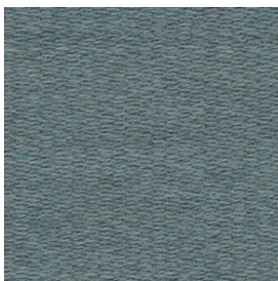
pattern name	specifications	number	description	net price per yard
--------------	----------------	--------	-------------	--------------------

vista



Design	Teri Figliuzzi	3525-002	Limestone	\$54.00
Application	Upholstery	3525-010	Mist	
Content	62% Acrylic, 25% Viscose,	3525-001	Granite	
	13% Polyester	3525-055	Citron	
Width	56"	3525-043	Pacific	
Repeat	None	3525-044	Indigo	
Weight per Linear Yard	18.02 Ounces	3525-066	Sumac	
Finish	None			
Abrasion	100,000 Double Rubs Wyzenbeek*			
Flammability	California TB 117-2013			
	UFAC, Class 1			
Sustainability	NFPA 260, Class 1			
	SCS Indoor Advantage™ Gold			
Cleaning Code	PFAS Free, FR Free			
	S			
Bernhardt Design	Seating Grade 3			
Origin	Turkey			


vivid




Application	Upholstery, Wrapped Panel	3523-000	Ash	\$72.00
Content	92% Wool, 8% Polyamide	3523-101	Carbon	
Width	55"	3523-012	Dust	
Repeat	None	3523-002	Fawn	
Weight per Linear Yard	17.09 Ounces	3523-022	Bay	
Finish	None	3523-003	Sage	
Abrasion	90,000 Cycles Martindale*	3523-033	Spruce	
Primary Use	Upholstery, Wrapped Panel	3523-100	Cloud	
Flammability	California TB 117-2013	3523-013	Slate	
	UFAC, Class 1	3523-034	Fjord	
Sustainability	NFPA 260, Class 1	3523-043	Lake	
	ASTM E84, Unadhered Class 1	3523-044	Ink	
Cleaning Code	SCS Indoor Advantage™ Gold	3523-040	Midnight	
	Rapidly Renewable, PFAS Free,	3523-087	Iron	
Bernhardt Design	FR Free, LBC Red List Free	3523-008	Blush	
	S	3523-068	Redwood	
Origin	Seating Grade 6	3523-078	Clay	
	Denmark	3523-077	Cider	

Sustainable

Dye lots may vary

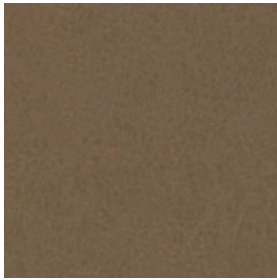
pattern name	specifications	number	description	net price per yard	
allude 	Application	Upholstery, Direct Glue Wall	3812-000	Snow	\$71.00
	Content	Face: 100% Polyurethane Back: 65% Polyester, 35% Rayon	3812-200	Tusk	
	Width	54"	3812-032	Cocoa	
	Weight per Linear Yard	18 Ounces	3812-235	Fields	
	Finish	None	3812-122	Woodpecker	
	Abrasion	400,000 Double Rubs Wyzenbeek*	3812-500	Espresso	
	Hydrolysis	14+ Weeks, ASTM D3690-02 Sect. 6.11, ISO 1419 Method C	3812-227	Bronze	
	Flammability	California TB 117-2013 UFAC, Class 1 NFPA 260, Class 1 ASTM E84, Adhered Class 1 FMVSS 302	3812-314	Stone Blue	
			3812-044	Atlantic	
			3812-010	Ash	
			3812-004	Shale	
			3812-011	Battleship	
	Sustainability	SCS Indoor Advantage™ Gold PFAS Free, FR Free, LBC Red List Free	3812-001	Black	
			Performance		
	Cleaning Code	WS	Bleach cleanable with 5:1 water/household bleach solution that must be extracted within 30 seconds		
Bernhardt Design	Seating Grade 6	Coated fabrics must be purchased in full yard increments only			
Origin	Japan	Prop 65 - DMF			

blended

	Application	Upholstery, Direct Glue Wall	3840-010	Silverstone	\$75.00
	Content	100% Proprietary Polycarbonate and Biobased Surface Back: 65% REPREVE® (Recycled Polyester), 35% ECOVERO™ (Environmentally Friendly Rayon)	3840-002	Khaki	
	Width	54"	3840-022	Honey	
	Weight per Linear Yard	12.1 Ounces	3840-222	Whiskey	
	Finish	None	3840-011	Putty	
	Abrasion	300,000 Double Rubs Wyzenbeek	3840-100	Gravity	
	Hydrolysis	16+ Weeks, ASTM D3690-02 Sect. 6.11, ISO 1419 Method C	3840-101	Flannel	
	Flammability	California TB 117-2013 UFAC, Class 1 NFPA 260, Class 1 ASTM E84 Adhered - Class A	3840-044	Indigo	
			3840-001	Pitch Black	
			Performance		
	Sustainability	SCS Indoor Advantage™ Gold PFAS Free, FR Free, Anti-Microbial Free, REACH Complaint, BioPreferred Program Certified, U.S. Department of Agriculture, LBC Red List Free	Bleach cleanable with 5:1 water/household bleach solution that must be extracted within 30 seconds		
			Coated fabrics must be purchased in full yard increments only		
	Cleaning Code	WS			
	Bernhardt Design	Seating Grade 7			
	Country of Origin	Japan			

pattern name specifications number description net price per yard

bomber jacket



Application	Upholstery	3839-010	Buff	\$49.00
Content	Face: 100% CPU-Polyurethane Back: 100% Polyester	3839-101	Taupe	
Width	54"	3839-002	Dusty	
Repeat	None	3839-062	Amaretto	
Weight per Linear Yard	25.0 oz.	3839-022	Dark Brown	
Additional Finishes	None	3839-044	Navy	
Abrasion	200,000 Double Rubs Wyzenbeek	3839-011	Woody	
Hydrolysis	15+ Weeks, ISO 1419 Method C	3839-110	Lead	
Flammability	California TB 117-2013 UFAC, Class 1 NFPA 260, Class 1 IMO A652 (16) 8.2	Performance Bleach cleanable with 10:1 water/household bleach solution that must be extracted within 30 seconds.		
Sustainability	SCS Indoor Advantage™ Gold PFAS Free, FR Free, LBC Red List Free, REACH Compliant, DMF Free	Coated fabrics must be purchased in full yard increments only		
Cleaning Code	WS			
Bernhardt Design	Seating Grade 2			
Origin	China			

brisa



Application	Upholstery, Direct Glue Wall	3802-200	Bone	\$71.00
Content	Face: 100% Polycarbonate Polyurethane Back: Reinforced Rayon	3802-220	Desert Clay	
Width	54"	3802-025	Aztec	
Weight per Linear Yard	13.8 Ounces	3802-122	Putty	
Finish	None	3802-011	Ash	
Abrasion	300,000 Double Rubs Wyzenbeek*	3802-444	Night Navy	
Hydrolysis	14+ Weeks, ASTM D3690-02 Sect. 6.11, ISO 1419 Method C	3802-226	Truffle	
Flammability	California TB 117-2013 UFAC, Class 1 NFPA 260, Class 1 ASTM E84, Adhered Class 1 FMVSS 302	3802-044	Indigo	
Sustainability	SCS Indoor Advantage™ Gold PFAS Free, FR Free, LBC Red List Free	3802-111	Black Onyx	
Cleaning Code	WS	Performance Bleach cleanable with 5:1 water/household bleach solution that must be extracted within 30 seconds		
Bernhardt Design	Seating Grade 6	Coated fabrics must be purchased in full yard increments only		
Origin	Japan	Prop 65 - DMF		

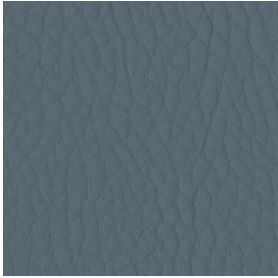
canvas



Design	Teri Figliuzzi	3837-000	Snow	\$62.00
Application	Upholstery	3837-001	Noir	
Content	100% Polyurethane	3837-011	Charcoal	
Width	54"	3837-034	Teal	
Weight per Linear Yard	16 Ounces	3837-040	Clipper	
Finish	Graffiti-Free® Water Based Chemistry	3837-003	Grass	
Abrasion	200,000 Double Rubs Wyzenbeek*	3837-101	Porcelain	
Flammability	California TB 117-2013 UFAC, Class 1, NFPA 260, Class 1	3837-110	Cloud	
Sustainability	SCS Indoor Advantage™ Gold PFAS Free, FR Free, LBC Red List Free	3837-200	Sand	
Cleaning Code	WS	3837-212	Gull	
Bernhardt Design	Seating Grade 4	Performance Bleach cleanable with 4:1 water/household bleach solution that must be extracted within 30 seconds.		
Origin	Korea	Coated fabrics must be purchased in full yard increments only		

pattern name	specifications	number	description	net price per yard
--------------	----------------	--------	-------------	--------------------

emerge



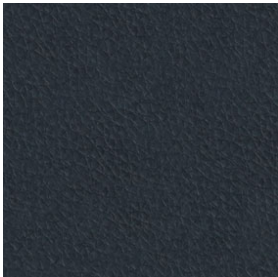
Application	Upholstery	3838-000	Dove	\$43.00
Content	Face: 100% Vinyl Back: 100% Polyester Knit	3838-110	Mist	
		3838-010	Ash	
Width	54"	3838-101	Storm	
Weight per Linear Yard	28 Ounces	3838-011	Charcoal	
Finish	Prefix® Protective Finish	3838-001	Coal	
Abrasion	100,000 Double Rubs Wyzenbeek	3838-200	Limestone	
Flammability	California 117-2013	3838-212	Mushroom	
	UFAC, Class 1	3838-020	Bark	
	NFPA 260, Class 1	3838-002	Canvas	
Sustainability	SCS Indoor Advantage™ Gold	3838-205	Sand	
	PFAS Free, FR Free	3838-022	Saddle	
Cleaning Code	WS	3838-225	Clay	
Bernhardt Design	Seating Grade 1	3838-222	Sable	
Origin	Thailand	3838-030	Sage	
		3838-040	Slate	
		3838-044	Midnight	
		3838-033	Marine	
		3838-333	Forest	
		3838-078	Apricot	
		3838-072	Umber	
		3838-066	Paprika	

Performance

Bleach cleanable with 5:1 water/household bleach solution that must be extracted within 30 seconds

Coated fabriccs must be purchased in full yard increments only

image



Application	Upholstery Direct Glue Wall	3799-022	Ash	\$71.00
Content	100% Micronylon Matrix	3799-002	Mink	
Width	54"	3799-210	Oak	
Weight per Linear Yard	10.8 Ounces	3799-025	Saddle	
Finish	None	3799-004	Blueberry	
Abrasion	250,000 Double Rubs Wyzenbeek*	3799-044	Newport	
Hydrolysis	10+ Weeks, ASTM D3690-02	3799-211	Otter	
	Sect. 6.11, ISO 1419 Method C	3799-001	Black	
Flammability	California 117-2013			
	UFAC, Class 1			
	NFPA 260, Class 1			
	ASTM E84, Adhered Class 1			
Sustainability	SCS Indoor Advantage™ Gold			
	PFAS Free, FR Free, LBC Red List Free			
Cleaning Code	WS			
Bernhardt Design	Seating Grade 6			
Origin	United States			

Performance

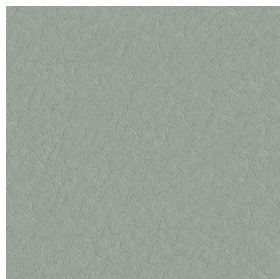
Bleach cleanable with 5:1 water/household bleach solution that must be extracted within 30 seconds.

Coated fabrics must be purchased in full yard increments only

Prop 65 - Antimony Oxide

pattern name specifications number description price per sq.ft.

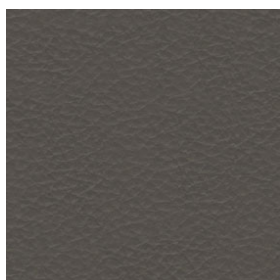
elan



Application	Upholstery	3111-100	Charcoal	\$14.00/sq.ft.
Content	Full Grain Leather, Semi-Aniline Dyed	3111-018	Mica	
Width	Average Hide Size 50-55 sq. ft.	3111-101	Cinder	
Thickness	Average 1.1-1.3 mm	3111-301	Mineral	
Finish	Slight protective top finish	3111-020	Ivory	
Flammability	California TB 117-2013	3111-103	Light Gray	
Sustainability	SCS Indoor Advantage™ Gold	3111-110	Greystone	
	PFAS Free, FR Free, LBC Red List Free	3111-214	Putty	
Origin	Sweden	3111-222	Sable	
		3111-225	Saddle	
		3111-488	Blueberry	
		3111-910	Pebble	
		3111-911	Mist	
		3111-912	Khaki	
		3111-913	Gravel	
		3111-925	Sandstone	
		3111-944	Newport	
		3111-001	Black	
		3111-010	Flannel	
		3111-022	Canyon	
		3111-275	Buckskin	

35 sq. ft. minimum purchase per color

essential



Application	Upholstery	3113-200	Quartz	\$12.00/sq.ft.
Content	Enhanced Full Grain Leather	3113-205	Sand	
Width	Average Hide Size 48-50 sq. ft.	3113-225	Amber	
Thickness	Average 1.1-1.3 mm	3113-214	Limestone	
Finish	Slight protective top finish	3113-235	Fossil	
Flammability	California TB 117-2013	3113-218	Shale	
Sustainability	SCS Indoor Advantage™ Gold	3113-281	Anthracite	
	PFAS Free, FR Free, LBC Red List Free	3113-201	Zinc	
Origin	Sweden	3113-210	Mica	
		3113-211	Charcoal	

30 sq. ft. minimum purchase per color

london



Design	Nan Boateng	3114-000	White	\$14.00/sq.ft.
Application	Upholstery	3114-200	Merino	
Content	Full Grain Leather, Semi-Aniline Dyed	3114-002	Carob	
Width	Average Hide Size 50-55 sq ft	3114-022	Havana	
Thickness	Average 1.0-1.2 mm	3114-010	Bone	
Finish	None	3114-044	Navy	
Flammability	California TB 117-2013	3114-088	Violet	
Sustainability	SCS Indoor Advantage™ Gold	3114-011	Dusty Grey	
	FR Free, LBC Red List Free, REACH Complaint	3114-110	Charcoal	
		3114-001	Noir	
Origin	Italy			

35 sq. ft. minimum purchase per color

Boasts Antibacterial and Antiviral Properties

rogue



Application	Upholstery	3110-200	Ash	\$16.00/sq.ft.
Content	Full Aniline Leather with all the Distinct Features of a Natural Hide	3110-201	Pebble	
		3110-205	Chamois	
Width	Average Hide Size 50-55 sq. ft.	3110-227	Brick	
Thickness	Average 1.3-1.5 mm	3110-202	Bark	
Finish	None	3110-212	Sable	
Flammability	California TB 117-2013	3110-100	Cinder	
Sustainability	SCS Indoor Advantage™ Gold	3110-111	Blackout	
	PFAS Free, FR Free, LBC Red List Free	3110-300	Evergreen	
Origin	Sweden	3110-340	Harbor	
		3110-400	Twilight	

35 sq. ft. minimum purchase per color

Dye lots may vary

Prices and Terms

All prices quoted are **net** wholesale F.O.B. Lenoir, N.C., and do not include shipping costs, taxes or storage charges. If applicable, sales tax will be based on ship-to destination. Customs fees and/or tariffs on international shipments are the responsibility of the recipient and therefore are not included in pricing quotations or freight invoices. Prices and specifications are subject to change without notice.

When credit has been approved, terms for cut yardage are net 30 days from the date of invoice, which is the same as the date of shipment. A service charge of 1.5% per month will be charged on all past due accounts.

If no credit has been approved then all sales are for cash in advance. Payment in full, including sales tax and shipping charges, must be received before an order will be shipped.

Credit

Upon receipt of an order, a line of credit may be established if account information and references meet Bernhardt Textiles guidelines. Bernhardt Textiles reserves the right to cancel credit or change terms at its discretion, without notice. Bernhardt Textiles fabrics may be purchased with a corporate VISA or MasterCard subject to a 3% handling fee.

Order Entry

All orders must be in writing and should be e-mailed directly to: **orders@bernhardttextiles.com** or faxed to Bernhardt Textiles: **828-759-6258**

Bernhardt Textiles is not liable for duplications if an order is both faxed and e-mailed. Orders should include the fabric name and number, shipping instructions, the ship to address and package markings and any special finish instructions. A reserve number, if applicable, must be referenced on the order.

All orders are subject to final acceptance by the Bernhardt Textiles office in Lenoir, N.C. Receipt of our acknowledgment indicates acceptance of the order subject to the terms set forth on the acknowledgment and in this document.

Bernhardt Textiles attempts to clarify all purchase orders. However, in the event the price list number and the name of the fabric or fabric color on the purchase order differ, the price list number will prevail.

All fabrics are sold to the nearest half yard with a one yard minimum per colorway. All coated fabric products are sold in one yard increments.

All leathers are sold by the square foot with minimum purchase requirements. The amount of leather shipped will vary from the amount of leather ordered, due to the irregular shapes and sizes of the hides.

Order Inquiries

For order inquiries, please contact your local sales representative or call Bernhardt Textiles at 877-639-0728.

Reserve Yardage

Bernhardt Textiles will, at its discretion, reserve yardage for up to 10 (ten) working days for 20 (twenty) or more yards. If an order is received for the reserved yardage, the reserving customer will have up to 24 hours to submit a purchase order. If the reserving customer does not comply, the reserved yardage will be released to fulfill the order in-house. In-coming goods cannot be reserved.

To reserve fabric, please contact your Bernhardt Textiles sales representative or call **Bernhardt Textiles at 877-639-0728**.

Changes and Cancellations

All reasonable requests for changes in orders will be honored if received in writing prior to the time that fabric is cut and in time to make the change. Bernhardt Textiles reserves the right to charge for labor and administrative costs for order changes.

Acknowledged orders may not be cancelled without written consent from Bernhardt Textiles. If approved, cancelled orders will be subject to a 25% handling charge. No cancellations will be permitted once the fabric has been cut.

Shipping

Bernhardt Textiles will ship in accordance with customer instructions whenever possible. If not specified, Bernhardt Textiles will exercise its best judgment in selecting a carrier.

When selecting a carrier, Bernhardt Textiles will make our best effort to meet requested delivery dates. Transportation lead-times and delays including equipment problems, weather, general traffic, traffic accidents, customer warehouse space, labor disputes, customer changes etc., that occur on a carrier will not be the responsibility of Bernhardt Textiles. Furthermore, Bernhardt Textiles will not be responsible for additional costs incurred due to aforementioned delays. Customer orders in production will be shipped as scheduled and will not be held. Bernhardt Textiles reserves the right to make partial shipments on any order, unless notified otherwise by the customer.

Claims

The utmost care is used in packing and shipping. Our liability ceases when the carrier issues a clear receipt to Bernhardt Textiles, which is an acknowledgment by the transportation company that the shipment has been received by them in good condition.

Damaged merchandise should not necessarily be refused but written exception should be made on the bill of lading and an immediate inspection requested of the carrier. Claims for damage or loss should be filed with the carrier within five days.

Any claim against Bernhardt Textiles for defects, errors, or shortages must be made within 10 (ten) days of delivery. Liability for defective merchandise shall be limited to the replacement or repair of that merchandise and Bernhardt Textiles shall not be liable for other damages or losses.

Returns

No merchandise may be returned to Bernhardt Textiles without written consent in the form of Return Authorization from our Quality Assurance Department stating why the item is being returned and how the item is to be shipped.

In the event a return is authorized by Bernhardt Textiles for reasons other than damage or defect, the customer shall be responsible for a 25% restocking fee, as well as a double freight charge.

Unauthorized returns will be automatically refused by our receiving department as will returns not in accordance with Bernhardt Textiles shipping instructions. **Under no circumstances will cut or treated fabric be accepted for return.**

Samples

Samples are available through your sales representative and from our website bernhardttextiles.com. Due to slight variations in fibers and dye lots, samples may not match existing inventory.

Additional Finishes

Bernhardt Textiles will, as an accommodation to customers and at the customer's own risk, have special finishes or backing applied to our fabrics at an additional net charge.

Fabrics will shrink when processed so yardage should be increased by 10% to ensure correct and final length. Bernhardt Textiles takes no responsibility for the work of any finisher nor any resultant shrinkage, coloration change or damage to the fabric.

Minimum yardage and upcharges for additional finishes are per pattern/colorway. Fabrics may not be combined to fulfill minimum requirements. Please allow a minimum of two weeks for processing.

Acrylic Backing

A back coating that provides stability, eliminates fraying, and prevents adhesive bleed through.

5-54 yards	Minimum \$125.00
55 yards or more	\$2.50 per yard net

Water-Based Stain Repellent Finish

A soil and stain resistant finish for upholstery and vertically applied fabrics.

5-54 yards	Minimum \$100.00
55 yards or more	\$2.00 per yard net

Note: Pricing above is for treatment applied at TSG finishing.

Other finishes and backings may be available in addition to those listed above. Contact your Sales Representative for a quote or further information regarding any other additional finish. Bernhardt Textiles does not warrant additional finishes.

Custom Fabrics

Custom fabrics are sold only by the full piece and sizes vary according to the mill. The customer is responsible for purchasing all production overage. Bernhardt Textiles reserves the right to charge a strike-off fee for custom fabrics. Invoices will reflect actual yardage shipped.

Bernhardt Textiles will work with the customer to develop special colors and fiber constructions of standard fabrics. When a custom fabric is needed contact your Sales Representative for pricing and minimum yardage requirements. Additional lead time is required for custom work and a 50% deposit must be received by Bernhardt Textiles before production of fabric will begin. **All custom fabrics are subject to a 10% upcharge.**

Limited Warranty

Bernhardt Textiles does not warrant or guarantee fabrics or leathers against fading, shrinking, stretching, seam slippage, wear abrasion, wrinkling, creasing, staining, running or discoloration from contact with any liquid or alteration in color and hand due to any finish treatment.

Bernhardt Textiles is not responsible for dye lot differences or discrepancies in widths of fabrics and does not guarantee, warrant or represent exact matches to cuttings, memos and samples. Fiber content and/or yarns may be substituted at our discretion. Fabric sources may be changed without notification. Leather hides may contain marks, scars, scratches or wrinkles considered by tanneries to be naturally inherent and acceptable characteristics. Bernhardt Textiles takes no responsibility for the size or location of such marks. While Bernhardt Textiles will supply customer, upon request, with copies of results of independent testing done on its textiles.

Bernhardt Textiles does not guarantee the results of such testing or that its products will meet specific industry, government or other codes or standards. Quality and expert design are utilized in the manufacture of Bernhardt Textiles. Our products are made in accordance with the Textile Fiber Products Identification Act and meet or exceed the industry standards as defined by the Association of Contract Textiles (A.C.T.) guidelines. Under normal conditions our products perform for their intended purpose in accordance with industry standards.

All warranties are void if fabric care instructions are not followed properly and we will not be liable for product abuse. The above warranty is given expressly and in lieu of any other warranties either expressed or implied, including any warranties of merchantability or fitness for a particular purpose. All textiles and leathers are warranted for three (3) years from the date of purchase of the product. Coated fabrics are warranted for five (5) years from the date of purchase of the product.

Abrasion

Multiple factors affect fabric durability and appearance retention, including end-user application and proper maintenance. Wyzenbeek and Martindale results above 100,000 double rubs have not been shown to be a reliable indicator of increased fabric lifespan.

Flammability Notice

Bernhardt Textiles does not warrant or assume any responsibility for flame retardant properties of fabrics or leathers, or issue any certificates regarding flammability. All Bernhardt Textiles contract fabrics meet the standards as set forth in the California Technical Bulletin 117-2013. Some fabrics meet other flammability standards as are listed on the swatch cards and in this price list. Bernhardt Textiles is not responsible for the final product resulting from any type of special finishing or flammability treatment. If in doubt of the suitability of a particular fabric, it is the suggestion of Bernhardt Textiles to submit a fabric sample to the fire regulatory authorities with jurisdiction at the final installation site.

fire retardancy 



Flammability testing determines a fabric's resistance to burning.

Upholstery	California Technical Bulletin 117-2013 Section E
Direct Glue Wallcoverings	ASTM E84-07 (adhered method)
Panels and Upholstered Walls	ASTM E84-07 (unadhered method)
Drapery	N.F.P.A. 701 Method 1

colorfastness to light 

Colorfastness to light is the degree to which fabric will retain its color when exposed to light.

Upholstery	AATCC 16 Option 1 or 3-2003 Class 4 Minimum at 40 hours
Direct Glue Wallcoverings	AATCC 16 Option 1 or 3-2003 Class 4 Minimum at 40 hours
Panels and Upholstered Walls	AATCC 16 Option 1 or 3-2003 Class 4 Minimum at 40 hours
Drapery	ASTM 16 Option 1 or 3-2003 Class 4 Minimum at 40 hours

abrasion  heavy duty  general contract

Abrasion is the ability of a fabric to withstand damage from wear and rubbing. There is a general contract specification as well as a heavy duty specification.

General Contract	ASTM D4157-02 (ACT approved #10 cotton duck) 15,000 double rubs Double Rubs Wyzenbeek Method or ASTM D4966-98 (12 KPa pressure) 20,000 cycles Martindale method
Heavy Duty Upholstery	ASTM D4157-02 (ACT approved #10 cotton duck) 30,000 double rubs Double Rubs Wyzenbeek method or ASTM D4966-98 (12 KPa pressure) 40,000 cycles Martindale method

colorfastness to wet & dry crocking 

Colorfastness to wet & dry crocking refers to the rubbing off of color from the fabric onto clothing, hands or other materials and can occur under wet or dry conditions.

Upholstery	AATCC 8-2001 Dry Crocking, Class 4 minimum Wet Crocking, Class 3 minimum
Direct Glue Wallcoverings	AATCC 8-201 Dry Crocking, Class 3 minimum Wet Crocking, Class 3 minimum
Panels and Upholstered Walls	AATCC 8-2001 Dry Crocking, Class 3 minimum Wet Crocking, Class 3 minimum
Drapery	AATCC 8-2001 (solids) Dry Crocking, Class 3 minimum Wet Crocking, Class 3 minimum AATCC 116-2001 (prints) Dry Crocking, Class 3 minimum Wet Crocking, Class 3 minimum Class 3 minimum

physical properties 

Piling is the formation of fuzzy balls of fiber on the surface of a fabric that remain attached to the fabric. Breaking strength is the measurement of stress exerted to pull a fabric apart under tension. Seam slippage is the movement of yarns in a fabric that occurs when it is pulled apart at a seam.

Upholstery	Brush pill ASTM D3511-02, Class 3 minimum Breaking strength ASTM D5034-95 (2001) (Grab Test) 50 lbs. minimum in warp & weft Seam slippage ASTM D4034 25 lbs. minimum in warp & weft
Panels and Upholstered Walls	Breaking strength ASTM D5034-95 (2001) (Grab Test) 35 lbs. minimum in warp & weft
Drapery	Seam slippage ASTM D3597-434-75 for fabrics over 6oz./sq. yard, 25 lbs. min. in warp & weft Seam slippage ASTM D3597-02-D434-95 for fabrics under 6oz./sq. yard, 25 lbs. min. in warp & weft

cleaning codes

Code S

Recommended Cleaning Instructions

To prevent overall soil, frequent vacuuming or light brushing to remove dust and grime is recommended. Spot clean, using a mild water-free solvent or dry cleaning product. Clean only in a well ventilated room and avoid any product containing Carbon Tetrachloride or other toxic materials. Pretest small area before proceeding. Cleaning by a professional furniture cleaning service only is recommended.

Caution: Never remove cushion covers for separate dry cleaning or washing, even though they do have zippers. Do not use bleach at any time. The use of steam or water-based cleaners may cause excessive shrinking or staining of this particular fabric. Do not use any tumble method of cleaning service as this may destroy the backing of the fabric or shrink or otherwise damage the upholstery fabric.

Code W

Recommended Cleaning Instructions

To prevent overall soil, frequent vacuuming or light brushing to remove dust and grime is recommended. Spot clean, using the foam only from a water-based cleaning agent such as a mild detergent or non-solvent upholstery shampoo product. Apply foam with a soft brush in a circular motion. Vacuum when dry. Pretest small area before proceeding. Use a professional furniture cleaning service when an overall soiled condition has been reached.

Caution: Never remove cushion covers for separate dry cleaning or washing, even though they do have zippers. Do not use bleach or any tumble method cleaning as this may destroy the backing of the fabric or shrink or otherwise damage the upholstery fabric.

Code WS

***Recommended Cleaning Instructions**

To prevent overall soil, frequent vacuuming or light brushing to remove dust and grime is recommended. Spot clean, with a mild solvent, an upholstery shampoo, or the foam from a mild detergent. When using a solvent or dry cleaning product, follow instructions carefully and clean only in a well ventilated room. Avoid any product which contains Carbon Tetrachloride or other toxic materials. With either method, pretest a small area before proceeding. Use a professional furniture cleaning service when an overall soiled condition has been reached.

Caution: Never remove cushion covers for dry cleaning or washing, even though they do have zippers. Do not use bleach or tumble method cleaning service as this may destroy the backing of the fabric or shrink or otherwise damage the upholstery fabric.

***Bleach Cleanable Fabrics:** Bleach cleanable with a water/household bleach solution that must be extracted within 30 seconds. Check each fabric for specific water/household bleach ratio.

Code X

Recommended Cleaning Instructions

Clean this fabric only by vacuuming or light brushing to prevent accumulation of dust or grime. Water-based foam cleaners or solvent-based cleaning agents of any kind may cause excessive shrinking, staining or distortion of the surface pile and, therefore, should not be used.

Caution: Never remove cushion covers for separate dry cleaning or washing, even though they do have zippers. Do not use any tumble method or cleaning service as this may destroy the backing of the fabric or shrink or otherwise damage the upholstery fabric.