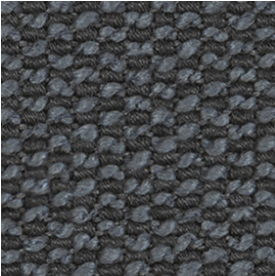



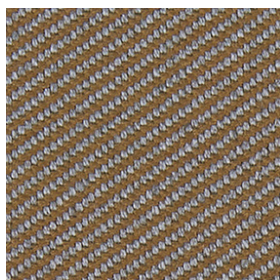
pattern name	specifications	number	description		net price per yard	
<b>adore</b>		Application	Upholstery	3558-000	Ali	<b>\$91.00</b>
		Content	42% Wool, 23% Cotton, 19% Viscose, 13% Linen, 3% Polyester	3558-020	Liv	
				3558-027	Ella	
		Width	54"	3558-002	Willow	
		Repeat	None	3558-022	Everly	
		Weight per Linear Yard	22.0 Ounces	3558-010	Mia	
		Finish	None	3558-014	Isla	
		Abrasion	49,000 Double Rubs Wyzenbeek	3558-008	Ava	
		Flammability	California TB 117-2013	3558-003	Gemma	
			UFAC, Class 1		Sustainable	
			NFPA 260, Class 1			
		Sustainability	SCS Indoor Advantage™ Gold FR Free, LBC Red List Free			
		Cleaning Code	S - Dry Clean Only			
Bernhardt Design	Seating Grade 10					
Origin	Italy					

<b>align</b>		Design	Teri Figliuzzi	3520-000	Chalk	<b>\$42.00</b>
		Application	Upholstery	3520-010	Mist	
		Content	59% Polyester, 36% Olefin, 5% Recycled Polyester (3% Post-Industrial, 2% Post-Consumer)	3520-011	Storm	
				3520-001	Carbon	
				3520-020	Amber	
		Width	55½"	3520-055	Citron	
		Repeat	Vertical: ¼", Horizontal: ¼"	3520-003	Aloe	
		Weight Per Linear Yard	17.79 Ounces	3520-033	Fir	
		Finish	Acrylic Backing, PFAS Free Stain Resistant	3520-043	Pacific	
				3520-044	Cobalt	
		Abrasion	84,000 Double Rubs Wyzenbeek*	3520-068	Berry	
		Flammability	California TB 117-2013	3520-066	Carmine	
			UFAC, Class 1	3520-077	Sumac	
			NFPA 260, Class 1		Performance	
		Sustainability	SCS Indoor Advantage™ Gold FR Free, LBC Red List Free		Bleach cleanable with 10:1 water/household bleach solution that must be extracted within 30 seconds	
		Cleaning Code	WS			
		Bernhardt Design	Seating Grade 1			
Origin	United States					

<b>aspire</b>		Application	Upholstery	3559-000	Dreamy	<b>\$113.00</b>
		Content	34% Viscose, 18% Cotton, 16% Acrylic, 13% Wool, 12% Linen, 4% Polyester, 3% Nylon	3559-010	Nimbus	
				3559-002	Tranquil	
				3559-020	Moondust	
		Width	54"			
		Repeat	None			
		Weight per Linear Yard	36.08 Ounces			
		Finishes	None			
		Abrasion	100,000 Double Rubs Wyzenbeek			
		Flammability	California TB 117-2013			
			UFAC, Class 1			
			NFPA 260, Class 1			
		Sustainability	SCS Indoor Advantage™ Gold FR Free, LBC Red List Free			
Cleaning Code	S - Dry Clean Only					
Bernhardt Design	Seating Grade 10					
Origin	Belgium					

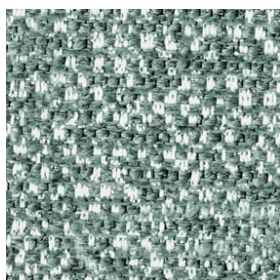
pattern name specifications number description net price per yard

bangkok



Design	Nana Boateng	3565-900	White	<b>\$80.00</b>
Application	Upholstery	3565-902	Ivory	
Content	33% Wool, 27% Viscose, 22% Cotton, 12% Linen, 6% Polyester	3565-922	Caramel	
		3565-921	Greige	
Width	55"	3565-910	Charcoal	
Repeat	None	3565-901	Noir	
Weight per Linear Yard	15.63 Ounces		Sustainable	
Finish	None			
Abrasion	62,000 Double Rubs Wyzenbeek			
Flammability	California TB 117-2013 UFAC, Class 1 NFPA 260, Class 1			
Sustainability	SCS Indoor Advantage™ Gold Rapidly Renewable, FR Free LBC Red List Free			
Cleaning Code	S - Dry Clean			
Bernhardt Design	Seating Grade 8			
Origin	Italy			

bella



Design	Teri Figliuzzi	3539-910	Silver	<b>\$81.00</b>
Application	Upholstery	3539-912	Stone	
Content	43% Viscose, 19% Polyacrylic, 18% Polyester, 16% Cotton, 4% Linen	3539-902	Taupe	
		3539-955	Sun	
Width	55"	3539-933	Vine	
Repeat	None	3539-943	Lake	
Weight per Linear Yard	25.36 Ounces	3539-934	Azure	
Finish	Light Acrylic Backing	3539-944	Navy	
Abrasion	94,000 Double Rubs Wyzenbeek*	3539-988	Plum	
Flammability	California TB 117-2013 UFAC, Class 1 NFPA 260, Class 1	3539-908	Rose	
		3539-977	Terra	
		3539-925	Amber	
Sustainability	SCS Indoor Advantage™ Gold PFAS Free, FR Free, LBC Red List Free			
Cleaning Code	S - Dry Clean			
Bernhardt Design	Seating Grade 8			
Origin	Italy			

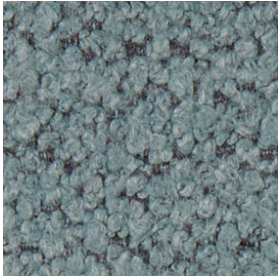
cadence



Design	Tift Merritt	3506-900	Birch	<b>\$69.00</b>
Application	Upholstery	3506-977	Cinnabar	
Content	63% Polyester, 37% Acrylic	3506-902	Bay	
Width	54"			
Repeat	Vertical: 17 7/8", Horizontal: 0"			
Weight per Linear Yard	16.69 Ounces			
Finish	None			
Abrasion	64,000 Double Rubs Wyzenbeek*			
Flammability	California TB 117-2013 UFAC, Class 1 NFPA 260, Class 1			
Sustainability	SCS Indoor Advantage™ Gold PFAS Free, FR Free			
Cleaning Code	WS			
Bernhardt Design	Seating Grade 5			
Origin	Turkey			

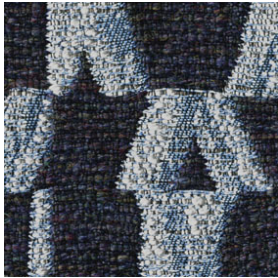
pattern name specifications number description net price per yard

cameo



Design	Teri Figliuzzi	3465-000	Dove	<b>\$127.00</b>
Application	Upholstery	3465-002	Taupe	
Content	60% Wool, 25% Viscose, 14% Polyamide, 1% Cotton	3465-020	Fawn	
Width	54"	3465-005	Citrus	
Repeat	None	3465-053	Sprout	
Weight per Linear Yard	20.5 Ounces	3465-003	Aloe	
Finish	Acrylic Backing	3465-043	Lagoon	
Abrasion	74,000 Cycles Martindale*	3465-004	Lake	
Flammability	California TB 117-2013 UFAC, Class 1 NFPA 260, Class 1	3465-007	Persimmon	
Sustainability	SCS Indoor Advantage™ Gold, Rapidly Renewable, PFAS Free, FR Free, LBC Red List Free			
Cleaning Code	S			
Bernhardt Design Origin	Seating Grade 11 Belgium			

capture



Design	Teri Figliuzzi	3507-901	Shadow	<b>\$91.00</b>
Application	Upholstery	3507-912	Sahara	
Content	29% Rayon, 23% Wool, 18% Nylon, 16% Post-Consumer Recycled Polyester, 14% Polyester	3507-911	Charcoal	
Width	54"	3507-903	Moss	
Repeat	Vertical: 9¼", Horizontal: 13¾"	3507-943	Lagoon	
Weight per Linear Yard	26.03 Ounces	3507-944	Midnight	
Finish	Acrylic Backing	3507-988	Blackberry	
Abrasion	100,000 Double Rubs Wyzenbeek*	3507-977	Rust	
Flammability	California TB 117-2013 UFAC, Class 1 NFPA 260, Class 1		Prop 65 –Antimony Oxide	
Sustainability	SCS Indoor Advantage™ Gold PFAS Free, FR Free, LBC Red List Free			
Cleaning Code	S			
Bernhardt Design Origin	Seating Grade 10 United States			

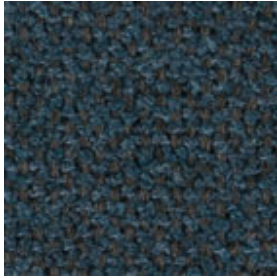
cherish



Application	Upholstery	3560-002	Theo	<b>\$50.00</b>
Content	71% Polyester, 20% Polypropylene, 9% Cotton	3560-020	Aspen	
Width	55"	3560-022	Max	
Repeat	None	3560-010	Finn	
Weight per Linear Yard	17.1 Ounces	3560-011	Grier	
Finishes	None	3560-001	Beck	
Abrasion	100,000 Double Rubs Wyzenbeek	3560-044	Tate	
Flammability	California TB 117-2013 UFAC, Class 1 NFPA 260, Class 1	3560-008	Ridge	
Sustainability	SCS Indoor Advantage™ Gold FR Free	3560-077	Riley	
Cleaning Code	S	3560-033	Leo	
Bernhardt Design Origin	Seating Grade 2 Spain			

pattern name	specifications	number	description	net price per yard
--------------	----------------	--------	-------------	--------------------

chunky



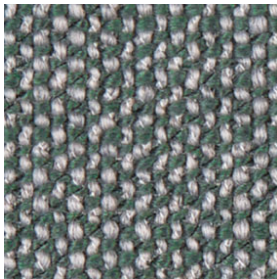
Application	Upholstery	3551-000	chalk	<b>\$69.00</b>
Content	65% Acrylic, 20% Polyester, 15% Cotton	3551-002	sand	
Width	54"	3551-012	taupe	
Repeat	None	3551-018	shadow	
Weight per Linear Yard	31 Ounces	3551-010	aluminum	
Finish	None	3551-101	pepper	
Abrasion	47,000 Double Rubs Wyzenbeek*	3551-014	carbon	
Flammability	California TB 117-2013	3551-076	rust	
	UFAC, Class 1	3551-033	forest	
	NFPA 260, Class 1	3551-044	twilight	
	SCS Indoor Advantage™ Gold, PFAS Free, FR Free, LBC Red List Free	Dye lots may vary		
Cleaning Code	S			
Bernhardt Design	Seating Grade 5			
Origin	Italy			

cielo

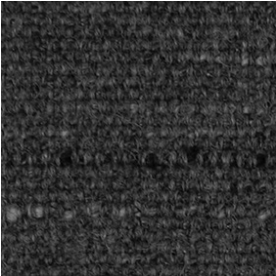

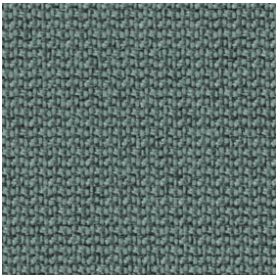


Design	Teri Figliuzzi	3536-000	Cloud	<b>\$71.00</b>
Application	Upholstery, Wrapped Panel	3536-010	Fog	
Content	92% Wool, 8% Polyester	3536-011	Night	
Width	55"	3536-022	Branch	
Repeat	None	3536-055	Sun	
Weight per Linear Yard	21.26 Ounces	3536-033	Seagrass	
Finish	None	3536-044	Dusk	
Abrasion	100,000 Cycles Martindale*	3536-066	Sunset	
Flammability	California TB 117-2013	3536-077	Flame	
	UFAC, Class 1		Sustainable	
	NFPA 260, Class 1			
	ASTM E84, Unadhered Class 2	Dye lots may vary		
Sustainability	SCS Indoor Advantage™ Gold Rapidly Renewable, PFAS Free, FR Free			
Cleaning Code	S - Dry Clean			
Bernhardt Design	Seating Grade 6			
Origin	Turkey			

classic fit

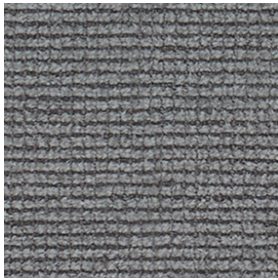


Application	Upholstery	3556-002	Khaki	<b>\$39.00</b>
Content	90% Polyester, 10% Cotton	3556-020	Wool Coat	
Width	55"	3556-022	Oxford Brown	
Repeat	None	3556-050	Gold Hoop	
Weight per Linear Yard	29.44 Ounces	3556-080	Pink Sweater	
Finish	Acrylic Backing	3556-010	Silk Blouse	
Abrasion	100,000 Double Rubs Wyzenbeek	3556-004	Blue Cardigan	
Flammability	California TB 117-2013	3556-030	Green Tee	
	UFAC, Class 1	3556-044	Jean Jacket	
	NFPA 260, Class 1	3556-001	Black Blazer	
	SCS Indoor Advantage™ Gold PFAS Free, FR Free, LBC Red List Free			
Cleaning Code	W			
Bernhardt Design	Seating Grade 1			
Origin	China			

pattern name	specifications	number	description	net price per yard
<b>crafted wool</b>				
	Application	Upholstery	3564-902 Bamboo	<b>\$96.00</b>
	Content	65% Wool, 15% Cotton, 8% Acrylic, 7% Polyester, 5% Viscose	3564-977 Copper	
	Width	59"	3564-944 Stonewash	
	Repeat	None	3564-910 Eclipse	
	Weight per Linear Yard	17.25 Ounces	3564-911 Licorice	
	Finish	None	<b>Sustainable</b>	
	Abrasion	100,000 Double Rubs Wyzenbeek		
	Flammability	California TB 117-2013 UFAC, Class 1 NFPA 260, Class 1		
	Sustainability	SCS Indoor Advantage™ Gold Rapidly Renewable, PFAS Free, FR Free, LBC Red List Free		
	Cleaning Code	S		
	Bernhardt Design	Seating Grade 10		
	Country of Origin	Italy		
	<b>crosshatch</b>			
	Design	Teri Figliuzzi	3547-902 Ash	<b>\$45.00</b>
	Application	Upholstery, Wrapped Panel	3547-910 Mica	
	Content	100% Polyester	3547-903 Mineral	
	Width	54"	3547-904 Sky	
	Repeat	Vertical: 3/8", Horizontal: 1/2"	3547-922 Taupe	
	Weight per Linear Yard	16.25 Ounces	3547-968 Blush	
	Finish	Acrylic Backing, DEFEND® Free	3547-912 Iron	
	Abrasion	100,000 Double Rubs Wyzenbeek*	3547-901 Granite	
	Flammability	California TB 117-2013 UFAC Class 1, NFPA 260, Class 1	<b>Performance</b>	
	Sustainability	ASTM E84, Unadhered Class 2 SCS Indoor Advantage™ Gold, PFAS Free, FR Free, LBC Red List Free	<b>Bleach cleanable</b> with 4:1 water/household bleach solution that must be extracted within 30 seconds	
	Cleaning Code	WS		
	Bernhardt Design	Seating Grade 1		
	Origin	United States		
<b>daybreak</b>				
	Design	Farg & Blanche	3530-001 Obsidian	<b>\$49.00</b>
	Application	Upholstery, Direct Glue Wall	3530-003 Sage	
	Content	98% Post-Consumer Recycled Polyester, 2% Polyester	3530-004 Lake	
	Width	55"	3530-008 Blush	
	Repeat	None	3530-010 Storm	
	Weight per Linear Yard	13.55 Ounces	3530-020 Bark	
	Finish	Acrylic Backing, DEFEND® Free	3530-022 Twig	
	Abrasion	100,000 Double Rubs Wyzenbeek*	3530-025 Amber	
	Flammability	California TB 117-2013 UFAC, Class 1, NFPA 260, Class 1	3530-030 Olive	
	Sustainability	ASTM E84, Adhered Class 1 SCS Indoor Advantage™ Gold	3530-033 Forest	
	Cleaning Code	W	3530-040 Steel	
	Bernhardt Design	Seating Grade 2	3530-043 Sea	
	Origin	Denmark	3530-044 Pacific	
			3530-052 Ochre	
			3530-066 Crimson	
			3530-077 Sunset	
			3530-300 Grass	
			3530-444 Indigo	

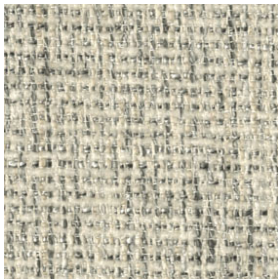
pattern name specifications number description net price per yard

delight



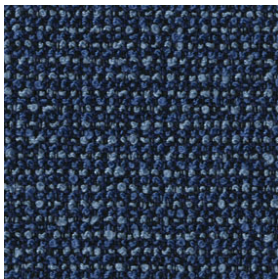
Application	Upholstery	3561-000	Creamy	<b>\$40.00</b>
Content	85% Recycled Polyester, 15% Polyester	3561-002	Oatmeal	
Width	54"	3561-020	Cream Soda	
Repeat	None	3561-012	Cocoa	
Weight per Linear Yard	13.0 Ounces	3561-022	Cola	
Finish	Acrylic Backing,	3561-010	Silver Dollar	
	PFAS Free Stain Resistant	3561-011	Onyx	
Abrasion	84,000 Double Rubs Wyzenbeek	3561-008	Misty Rose	
Flammability	California TB 117-2013	3561-082	Honeybun	
	UFAC, Class 1	3561-077	Marmalade	
Sustainability	NFPA 260, Class 1	3561-066	Cinnamon	
	SCS Indoor Advantage™ Gold	3561-080	Periwinkle	
	Recycled Content,	3561-040	Poolside	
	PFAS Free, FR Free,	3561-044	Juniper	
Cleaning Code	LBC Red List Free	3561-003	Pistachio	
	WS	Sustainable		
	Bernhardt Design	Seating Grade 1		
Origin	Canada			

diffuse




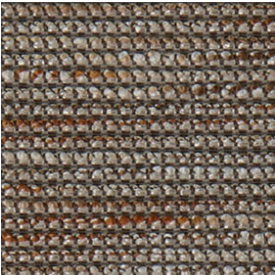
Design	Teri Figliuzzi	3528-000	Chalk	<b>\$49.00</b>
Application	Upholstery	3528-008	Blush	
Content	70% Acrylic, 30% Polyester	3528-035	Bamboo	
Width	55"	3528-020	Fawn	
Repeat	None	3528-012	Dust	
Weight per Linear Yard	18.5 Ounces	3528-010	Mist	
Finish	PFAS Free Stain Resistant	3528-004	Slate	
	Abrasion	100,000 Double Rubs Wyzenbeek*	3528-022	
Flammability	California TB 117-2013	3528-011	Carbon	
	UFAC, Class 1	3528-044	Midnight	
Sustainability	NFPA 260, Class 1	3528-088	Plum	
	SCS Indoor Advantage™ Gold			
	PFAS Free, FR Free			
Cleaning Code	S			
Bernhardt Design	Seating Grade 2			
Origin	Turkey			

element



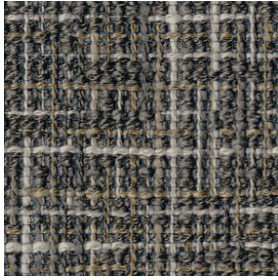
Design	Teri Figliuzzi	3495-000	Mist	<b>\$59.00</b>
Application	Upholstery, Wrapped Panel	3495-910	Cinder	
Content	100% Polyester	3495-911	Charcoal	
Width	54"	3495-902	Limestone	
Repeat	None	3495-912	Taupe	
Weight per Linear Yard	17.04 Ounces	3495-922	Twig	
Finish	Acrylic Backing, DEFEND® Free	3495-955	Amber	
	Abrasion	100,000 Double Rubs Wyzenbeek*	3495-903	
Flammability	California TB 117-2013	3495-933	Hedge	
	UFAC, Class 1,	3495-904	Surf	
Sustainability	NFPA 260, Class 1	3495-944	Cobalt	
	ASTM E84, Unadhered Class 1	3495-977	Cayenne	
	SCS Indoor Advantage™ Gold	3495-907	Tangelo	
Cleaning Code	FR Free, LBC Red List Free	Performance		
	WS			
	Bernhardt Design	Seating Grade 4	Bleach cleanable with 5:1 water/household bleach solution that must be extracted within 30 seconds	
Origin	United States			

pattern name	specifications	number	description	net price per yard	
<b>focus</b>					
	Application	Upholstery, Wrapped Panel	3470-010	Mica	<b>\$79.00</b>
	Content	100% Wool	3470-110	Silver	
	Width	55"	3470-100	Smoke	
	Repeat	None	3470-011	Shadow	
	Weight per Linear Yard	23.6 Ounces	3470-111	Cinder	
	Finish	None	3470-101	Charcoal	
	Abrasion	100,000 Cycles Martindale*	3470-002	Limestone	
	Flammability	California TB 117-2013	3470-020	Fawn	
		UFAC, Class 1,	3470-200	Bison	
		NFPA 260, Class 1	3470-055	Citrus	
		ASTM E84, Unadhered Class 2	3470-003	Aloe	
	Sustainability	SCS Indoor Advantage™ Gold	3470-033	Hedge	
		Rapidly Renewable, PFAS Free,	3470-030	Sprout	
		FR Free, LBC Red List Free	3470-300	Grass	
	Cleaning Code	S	3470-043	Lagoon	
	Bernhardt Design	Seating Grade 7	3470-004	Sky	
			3470-040	Bluebird	
			3470-044	Twilight	
			3470-088	Royalty	
			3470-086	Plum	
			3470-080	Orchid	
			3470-066	Poppy	
			3470-060	Crimson	
			3470-061	Cerise	
			3470-077	Zest	
		3470-070	Siren		
		3470-076	Cayenne		
		3470-075	Paprika		
			<b>Sustainable</b>		
			Dye lots may vary		

<b>forte</b>					
	Design	Tift Merritt	3502-900	Birch	<b>\$100.00</b>
	Application	Upholstery	3502-902	Fawn	
	Content	37% Cotton, 25% Acrylic,	3502-903	Grass	
		19% Polyamide, 13% Viscose,	3502-943	Lagoon	
		6% Polyester	3502-988	Orchid	
	Width	57"	3502-968	Claret	
	Repeat	Vertical: 1/8", Horizontal: 1/8"	3502-976	Poppy	
	Weight per Linear Yard	10 1/2 Ounces	3502-977	Papaya	
	Finish	None			
	Abrasion	89,000 Double Rubs Wyzenbeek*			
	Primary Use	Upholstery			
	Flammability	California TB 117-2013			
		UFAC, Class 1			
		NFPA 260, Class 1			
	Sustainability	SCS Indoor Advantage™ Gold			
	PFAS Free, FR Free				
Cleaning Code	S				
Bernhardt Design	Seating Grade 10				
Origin	Belgium				

pattern name specifications number description net price per yard

fresca



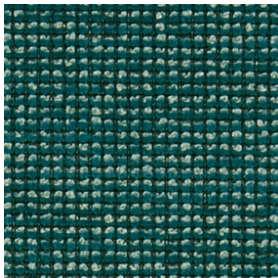
Design	Teri Figliuzzi	3540-920	Birch	<b>\$82.00</b>
Application	Indoor/Outdoor Upholstery, Wrapped Panel	3540-902	Mushroom	
Content	100% Polyester, (96% Post-Consumer Recycled Polyester, 4% Virgin Polyester)	3540-955	Sun	
Width	53"	3540-925	Amber	
Repeat	Vertical: 19½", Horizontal: 13½"	3540-943	Sky	
Weight per Linear Yard	20.52 Ounces	3540-922	Bark	
Finish	Antimicrobial Backing, DEFEND® Free	3540-911	Night	
Abrasion	74,000 Double Rubs Wyzenbeek*	3540-944	Dusk	
Flammability	California TB 117-2013	3540-966	Sunset	
	UFAC, Class 1		Sustainable	
	NFPA 260, Class 1		Performance	
	ASTM E84, Unadhered Class 1			
Sustainability	SCS Indoor Advantage™ Gold		Bleach cleanable with 10:1 water/household bleach solution that must be extracted within 30 seconds	
	Recycled Content, Antimicrobial, PFAS Free, FR Free, LBC Red List Free			
Cleaning Code	WS			
Bernhardt Design	Seating Grade 8			
Origin	United States			

hendese



Design	Taher Asad-Bakhtiari	3515-000	Desert	<b>\$74.00</b>
Application	Upholstery	3515-010	Cinder	
Content	56% Cotton, 20% Solution Dyed Nylon, 14% Virgin Polyester, 10% Post-Consumer Recycled Polyester	3515-014	Slate	
Width	52"	3514-033	Grassland	
Repeat	Vertical: ½", Horizontal: ¾"	3515-004	Deep Sea	
Weight per Linear Yard	23.12 Ounces	3515-044	Sapphire	
Finish	Acrylic Backing, DEFEND® Free	3515-066	Sumac	
Abrasion	100,000 Double Rubs Wyzenbeek*	3515-068	Sunset	
Flammability	California TB 117-2013	3515-077	Copper	
	UFAC, Class 1	3515-002	Spice	
	NFPA 260, Class 1		Sustainable	
Sustainability	SCS Indoor Advantage™ Gold			
	Rapidly Renewable, FR Free			
	LBC Red List Free			
Cleaning Code	S			
Bernhardt Design	Seating Grade 7			
Origin	United States			

hero

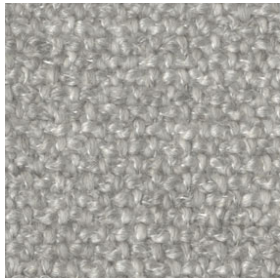


Design	Teri Figliuzzi	3463-002	Sand	<b>\$73.00</b>
Application	Upholstery	3463-052	Amber	
Content	70% Polyester, 30% Post-Consumer Recycled Polyester	3463-072	Brick	
Width	54"	3463-022	Espresso	
Repeat	None	3463-033	Verde	
Weight per Linear Yard	21.25 Ounces	3463-035	Sprout	
Finish	Acrylic Backing, DEFEND® Free	3463-043	Surf	
Abrasion	100,000 Double Rubs Wyzenbeek*	3463-044	Twilight	
Flammability	California TB 117-2013	3463-088	Plum	
	UFAC, Class 1	3463-067	Poppy	
	NFPA 260, Class 1	3463-010	Shadow	
Sustainability	SCS Indoor Advantage™ Gold, Fr Free, LBC Red List Free	3463-011	Carbon	
			Performance	
Cleaning Code	WS		Texture may vary	
Bernhardt Design	Seating Grade 6			
Origin	United States		Bleach cleanable with 5:1 water/household bleach solution that must be extracted within 30 seconds	



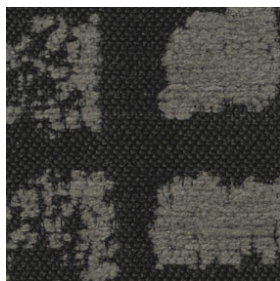
pattern name	specifications	number	description	net price per yard
--------------	----------------	--------	-------------	--------------------

imprint



Design	Teri Figliuzzi	3508-000	Canvas	<b>\$114.00</b>
Application	Upholstery	3508-002	Birch	
Content	42% Polyacrylic, 18% Cotton,	3508-022	Cocoa	
	14% Viscose, 13% Polyester,	3508-020	Sahara	
	7% Wool, 6% Linen	3508-010	Ash	
Width	54"	3508-012	Shark	
Repeat	None	3508-011	Graphite	
Weight per Linear Yard	32.55 Ounces			
Finish	None			
Abrasion	100,000 Double Rubs Wyzenbeek*			
Flammability	California TB 117-2013 UFAC, Class 1 NFPA 260, Class 1			
Sustainability	SCS Indoor Advantage™ Gold, PFAS Free, FR Free, LBC Red List Free			
Cleaning Code	S			
Bernhardt Design	Seating Grade 11			
Origin	Italy			

ink



Design	Chrissa Amuah	3541-922	Woodland	<b>\$53.00</b>
Application	Upholstery	3541-904	Steel	
Content	88% Polyester, 12% Solution Dyed Nylon	3541-943	Cypress	
Width	57¼"	3541-944	Dusk	
Repeat	Vertical: 18½", Horizontal: 14½"		<b>Performance</b>	
Weight per Linear Yard	22.9 Ounces			
Finish	Acrylic Backing, Stain Resistant		<b>Bleach cleanable</b> with 5:1 water/household bleach	
Abrasion	94,000 Double Rubs Wyzenbeek*		solution that must be extracted within 30 seconds	
Flammability	California TB 117-2013 UFAC, Class 1 NFPA 260, Class 1			
Sustainability	SCS Indoor Advantage™ Gold FR Free, LBC Red List Free			
Cleaning Code	WS			
Bernhardt Design	Seating Grade 3			
Origin	United States			

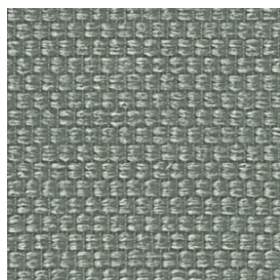
istanbul



Design	Nana Boateng	3566-000	Ivory	<b>\$85.00</b>
Application	Upholstery	3566-002	Merino	
Content	50% Polyester, 50% Polyacrylic	3566-020	Carob	
	Pile: 100% Cotton	3566-022	Havana	
Width	56"	3566-088	Violet	
Repeat	None	3566-001	Noir	
Weight per Linear Yard	13.66 Ounces			
Finish	None			
Abrasion	50,000 Double Rubs Wyzenbeek			
Flammability	California TB 117-2013 UFAC, Class 1 NFPA 260, Class 1			
Sustainability	SCS Indoor Advantage™ Gold FR Free, LBC Red List Free			
Cleaning Code	S - Dry Clean			
Bernhardt Design	Seating Grade 8			
Origin	Germany			

pattern name	specifications	number	description	net price per yard
--------------	----------------	--------	-------------	--------------------

## kavir



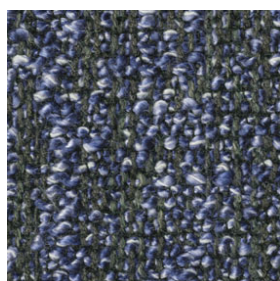
Design	Taher Asad-Bakhtiari	3518-100	Desert	<b>\$45.00</b>
Application	Upholstery, Wrapped Panel	3518-020	Dust	
Content	70% Virgin Polyester,	3518-030	Mineral	
	30% Post-Consumer Recycled Polyester	3518-004	Slate	
Width	54"	3518-014	Smoke	
Repeat	Vertical: ¼", Horizontal: ⅛"	3518-010	Cinder	
Weight per Linear Yard	16.0 Ounces	3518-011	Charcoal	
Finish	Acrylic Backing	3518-012	Dark Taupe	
Abrasion	100,000 Double Rubs Wyzenbeek*	3518-002	Bark	
Primary Use	Upholstery, Wrapped Panel	3518-022	Bison	
Flammability	California TB 117-2013	3518-212	Seal	
	UFAC, Class 1	3518-025	Ore	
	NFPA 260, Class 1	3518-077	Copper	
	ASTM E84, Unadhered Class 1	3518-066	Poppy	
	SCS Indoor Advantage™ Gold	3518-068	Orchid	
Sustainability	FR Free, LBC Red List Free	3518-044	Indigo	
		3518-043	Deep Sea	
Cleaning Code	WS	3518-035	Grassland	
Bernhardt Design	Seating Grade 1			
Origin	Canada			

## kumasi



Design	Nana Boateng	3568-000	Ivory	<b>\$93.00</b>
Application	Upholstery, Applied Vertically	3568-002	Champagne	
Content	70% Polyester, 30% Polyacrylic,	3568-020	Truffle	
	Pile: 100% Polyacrylic	3568-022	Havana	
Width	Ground: 100% Polyester	3568-008	Aubergine	
	55"	3568-088	Violet	
Repeat	None	3568-066	Sakura	
Weight per Linear Yard	11.27 Ounces		<b>Performance</b>	
Finish	None			
Abrasion	100,000 Double Rubs Wyzenbeek		<b>Bleach cleanable</b> with 10:1 water/household bleach solution that must be extracted within 30 seconds	
Flammability	California TB 117-2013			
	UFAC, Class 1			
	NFPA 260, Class 1			
Sustainability	SCS Indoor Advantage™ Gold			
	FR Free, LBC Red List Free			
Cleaning Code	WS			
Bernhardt Design	Seating Grade 10			
Origin	Germany			

## loop

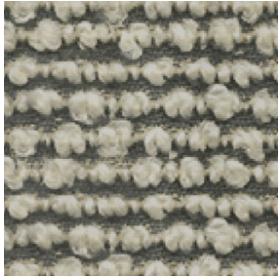


Design	Teri Figliuzzi	3519-000	Limestone	<b>\$52.00</b>
Application	Upholstery	3519-002	Cashew	
Content	29% Polyacrylic, 24% Cotton,	3519-022	Bay	
	24% Viscose, 22% Polyester, 1% Linen	3519-010	Ash	
Width	56"	3519-011	Storm	
Repeat	None	3519-001	Granite	
Weight per Linear Yard	22.77 Ounces	3519-020	Amber	
Finish	None	3519-055	Citron	
Abrasion	100,000 Double Rubs Wyzenbeek*	3519-003	Aloe	
Flammability	California TB 117-2013	3519-033	Fir	
	UFAC, Class 1	3519-043	Pacific	
	NFPA 260, Class 1	3519-044	Ink	
	SCS Indoor Advantage™ Gold,	3519-068	Berry	
Sustainability	PFAS Free, FR Free	3519-066	Sunset	
		3519-077	Spice	
Cleaning Code	S			
Bernhardt Design	Seating Grade 3			
Origin	Turkey			



pattern name specifications number description net price per yard

muse



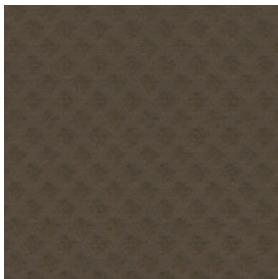
Design	Teri Figliuzzi	3454-000	Pearl	<b>\$135.00</b>
Application	Upholstery	3454-002	Dune	
Content	97% Wool, 3% Nylon	3454-022	Birch	
Width	54"	3454-010	Mica	
Repeat	Vertical: 1/2", Horizontal: 3/8"	3454-011	Cinder	
Weight per Linear Yard	25.37 Ounces	3454-001	Charcoal	
Finish	None		Sustainable	
Abrasion	59,000 Cycles Martindale*			
Flammability	California TB 117-2013 UFAC, Class 1 NFPA 260, Class 1			
Sustainability	SCS Indoor Advantage™ Gold Rapidly Renewable, PFAS Free, FR Free, LBC Red List Free			
Cleaning Code	S - Dry Clean Only			
Bernhardt Design	Seating Grade 11			
Origin	New Zealand			

nightfall



Design	Farg & Blanche	3533-000	Chalk	<b>\$84.00</b>
Application	Upholstery	3533-010	Storm	
Content	68% Cotton, 17% Nylon, 15% Polyester	3533-001	Coal	
Width	52"	3533-003	Lichen	
Repeat	Vertical: 8 5/8", Horizontal: 9 1/8"	3533-033	Forest	
Weight per Linear Yard	28.25 Ounces	3533-043	Pacific	
Finish	DEFEND® Free	3533-044	Indigo	
Abrasion	100,000 Double Rubs Wyzenbeek*	3533-066	Crimson	
Flammability	California TB 117-2013 UFAC, Class 1 NFPA 260, Class 1		Sustainable	
Sustainability	SCS Indoor Advantage™ Gold Rapidly Renewable, FR Free LBC Red List Free			
Cleaning Code	S			
Bernhardt Design	Seating Grade 8			
Origin	United States			

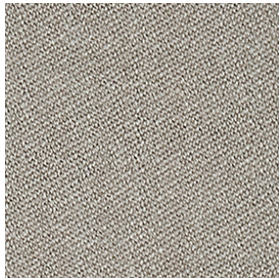
océane



Design	Océane Delain	3491-002	Taupe	<b>\$114.00</b>
Application	Upholstery	3491-006	Red	
Content	82% Polyamide, 18% Elastodiene	3491-001	Black	
Width	57"			
Repeat	None			
Weight per Linear Yard	14.9 Ounces			
Finish	None			
Abrasion	100,000 Double Rubs Wyzenbeek*			
Flammability	California TB 117-2013 UFAC, Class 1 NFPA 260, Class 1			
Sustainability	SCS Indoor Advantage™ Gold, FR Free			
Cleaning Code	X			
Bernhardt Design	Seating Grade 11			
Origin	France			

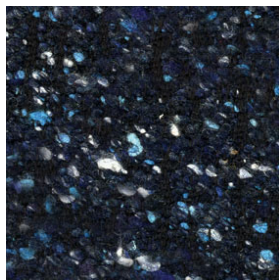
pattern name specifications number description net price per yard

palette



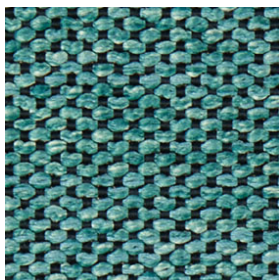
Design	Teri Figliuzzi	3549-000	Alabaster	<b>\$69.00</b>
Application	Upholstery, Wrapped Panel	3549-100	Ash	
Content	85% New Zealand Wool, 15% Polyamide	3549-002	Dust	
Width	55"	3549-020	Twig	
Repeat	None	3549-212	Iron	
Weight per Linear Yard	15.16 Ounces	3549-012	Mist	
Finish	None	3549-010	Cinder	
Abrasion	100,000 Cycles Martindale*	3549-101	Carbon	
Flammability	California TB 117-2013	3549-011	Storm	
	UFAC Class 1,	3549-001	Obsidian	
	NFPA 260, Class 1	3549-022	Stone	
	ASTM E84, Unadhered Class 2	3549-004	Slate	
Sustainability	SCS Indoor Advantage™ Gold	3549-014	Steel	
	Rapidly Renewable, PFAS Free,	3549-044	Indigo	
	FR Free, LBC Red List Free	3549-043	Sea	
Cleaning Code	S - Dry Clean Only	3549-034	Lagoon	
Bernhardt Design	Seating Grade 5	3549-008	Blush	
Origin	Denmark	3549-078	Clay	
		3549-068	Redwood	
		3549-077	Cider	
		3549-060	Cabernet	
			<b>Sustainable</b>	

patina



Design	Teri Figliuzzi	3537-901	Ash	<b>\$101.00</b>
Application	Upholstery	3537-910	Smoke	
Content	45% Cotton, 25% Polyester,	3537-903	Moss	
	14% Polyacrylic, 10% Wool, 6% Silk	3537-922	Bark	
Width	57"	3537-935	Pollen	
Repeat	None	3537-943	Azure	
Weight per Linear Yard	24.18 Ounces	3537-944	Dusk	
Finish	None	3537-988	Wine	
Abrasion	100,000 Double Rubs Wyzenbeek*	3537-966	Carmine	
Flammability	California TB 117-2013		<b>Sustainable</b>	
	UFAC, Class 1			
	NFPA 260, Class 1		Dye lots may vary	
Sustainability	SCS Indoor Advantage™ Gold			
	Rapidly Renewable, PFAS Free,			
	FR Free, LBC Red List Free			
Cleaning Code	S - Dry Clean Only			
Bernhardt Design	Seating Grade 10			
Origin	Italy			

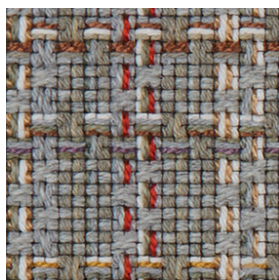
pearl



Design	Anabela Chan	3490-000	Quartz	<b>\$66.00</b>
Application	Upholstery, Wrapped Panel	3490-010	Mica	
Content	100% Polyester	3490-011	Pyrite	
Width	54"	3490-100	Onyx	
Repeat	None	3490-002	Moonstone	
Weight per Linear Yard	17.78 Ounces	3490-020	Bronzite	
Finish	Light Acrylic Backing,	3490-200	Jasper	
	PFAS Free Stain Resistant	3490-003	Emerald	
Abrasion	100,000 Double Rubs Wyzenbeek*	3490-043	Turquoise	
Flammability	California TB 117-2013	3490-088	Amethyst	
	UFAC, Class 1,	3490-066	Ruby	
	NFPA 260, Class 1		Texture may vary	
	ASTM E84, Unadhered Class 1			
Sustainability	SCS Indoor Advantage™ Gold			
	FR Free LBC Red List Free			
Cleaning Code	WS			
Bernhardt Design	Seating Grade 5			
Origin	Turkey			

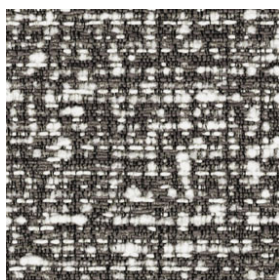
pattern name	specifications	number	description	net price per yard
--------------	----------------	--------	-------------	--------------------

perfect plaid



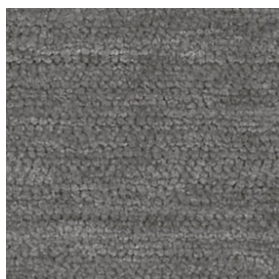
Application	Upholstery	3562-902	Whitewash	<b>\$81.00</b>
Content	50% Recycled Cotton, 24% Rayon,	3562-922	Brownstone	
	12% Post Consumer Polyester,	3562-903	Stratus	
Width	11% Wool, 3% Nylon	3562-904	Periwinkle	
	53½"	3562-901	Limo	
Repeat	Vertical: 26", Horizontal: 26"		<b>Sustainable</b>	
Weight per Linear Yard	28.68 Ounces			
Finish	Light Acrylic Backing			
Abrasion	100,000 Double Rubs Wyzenbeek			
Flammability	California TB 117-2013			
	UFAC, Class 1			
Sustainability	NFPA 260, Class 1			
	SCS Indoor Advantage™ Gold			
	Rapidly Renewable, Recycled Content,			
	PFAS Free, FR Free, LBC Red List Free			
Cleaning Code	S			
Bernhardt Design	Seating Grade 8			
Country of Origin	USA			

pix



Design	Teri Figliuzzi	3509-900	Dust	<b>\$59.00</b>
Application	Upholstery	3509-902	Mushroom	
Content	83% Polyester, 17% Nylon	3509-922	Walnut	
	57"	3509-910	Shadow	
Repeat	Vertical: 25⅞", Horizontal: 7⅞"	3509-911	Graphite	
Weight per Linear Yard	21.48 Ounces	3509-933	Lichen	
		3509-943	Scuba	
Finish	Acrylic Backing,	3509-944	Cobalt	
	PFAS Free Stain Resistant	3509-988	Berry	
Abrasion	100,000 Double Rubs Wyzenbeek*	3509-977	Chili	
Flammability	California TB 117-2013		<b>Performance</b>	
	UFAC, Class 1			
Sustainability	NFPA 260, Class 1			
	SCS Indoor Advantage™ Gold		<b>Bleach cleanable</b> with 5:1 water/household bleach solution that must be extracted within 30 seconds	
	FR Free, LBC Red List Free			
Cleaning Code	WS			
Bernhardt Design	Seating Grade 4			
Origin	United States			

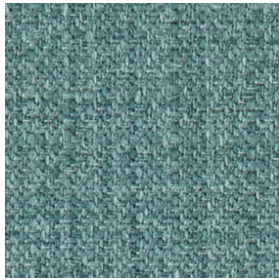
plush



Application	Upholstery	3550-000	Chalk	<b>\$67.00</b>
Content	100% Polyester	3550-002	Mushroom	
	55"	3550-022	Taupe	
Repeat	None	3550-001	Shadow	
Weight per Linear Yard	22 Ounces	3550-010	Aluminum	
	None	3550-066	Mahogany	
Finish	None	3550-033	Forest	
Abrasion	100,000 Double Rubs Wyzenbeek*	3550-040	Charcoal	
Flammability	California TB 117-2013			
	UFAC, Class 1			
Sustainability	NFPA 260, Class 1		Dye lots may vary	
	SCS Indoor Advantage™ Gold			
	PFAS Free, FR Free, LBC Red List Free			
Cleaning Code	S			
Bernhardt Design	Seating Grade 5			
Origin	Italy			

pattern name	specifications	number	description	net price per yard
--------------	----------------	--------	-------------	--------------------

pocket square



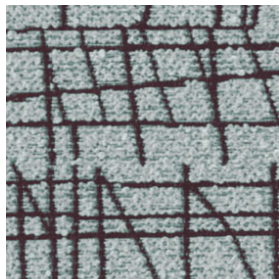
Application	Upholstery	3555-000	Pearl	<b>\$34.00</b>
Content	100% Polyester	3555-002	Champagne	
Width	55"	3555-022	Sun Kissed	
Repeat	None	3555-020	Bourbon	
Weight per Linear Yard	13.8 oz.	3555-043	Peacock	
Finish	Acrylic Backing, Nano-Tex®	3555-044	Lapis	
Abrasion	100,000 Double Rubs Wyzenbeek	3555-004	Baby Blue	
Flammability	California TB 117-2013 UFAC, Class 1	3555-010	Silver Fox	
	NFPA 260, Class 1	3555-011	Sterling	
	SCS Indoor Advantage™ Gold	3555-001	Heathered	
Sustainability	PFAS Free, FR Free		<b>Performance</b>	
Cleaning Code	W		<b>Bleach cleanable</b> with 10:1 water/household bleach	
Bernhardt Design	Seating Grade 1		solution that must be extracted within 30 seconds.	
Origin	China			

posh



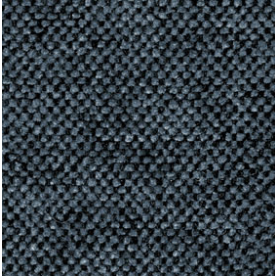


Design	Teri Figliuzzi	3392-000	Birch	<b>\$166.00</b>
Application	Upholstery	3392-002	Camel	
Content	Face: 100% Alpaca	3392-022	Bison	
	Back: 73% Polyester, 27% Viscose	3392-200	Espresso	
Width	54"	3392-010	Cinder	
Repeat	None	3392-001	Night	
Weight per Linear Yard	21.14 Ounces		<b>Sustainable</b>	
Finish	None			
Abrasion	100,000 Double Rubs Wyzenbeek*			
Flammability	California TB 117-2013 UFAC, Class 1			
	NFPA 260, Class 1			
Sustainability	SCS Indoor Advantage™ Gold			
	Rapidly Renewable, FR Free, LBC Red List Free			
Cleaning Code	X			
Bernhardt Design	Seating Grade 11			
Origin	Belgium			

random



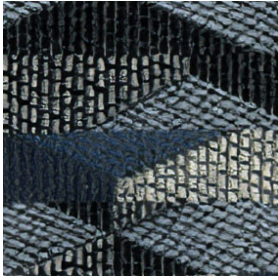
Design	Teri Figliuzzi	3524-000	Chalk	<b>\$65.00</b>
Application	Upholstery	3524-025	Straw	
Content	77% Polyester, 23% Solution Dyed Nylon	3524-003	Lichen	
Width	54"	3524-014	Slate	
Repeat	Vertical: 25¼", Horizontal: 28"	3524-004	Sky	
Weight per Linear Yard	18.71 Ounces	3524-044	Midnight	
Finish	Acrylic Backing, DEFEND® Free	3524-001	Carbon	
Abrasion	100,000 Double Rubs Wyzenbeek*	3524-010	Shadow	
Flammability	California TB 117-2013 UFAC, Class 1;	3524-068	Berry	
	NFPA 260, Class 1		<b>Performance</b>	
Sustainability	SCS Indoor Advantage™ Gold		<b>Bleach cleanable</b> with 4:1 water/household bleach	
	FR Free, LBC Red List Free		solution that must be extracted within 30 seconds	
Cleaning Code	WS			
Bernhardt Design	Seating Grade 5			
Origin	United States			

pattern name	specifications	number	description		net price per yard
roma					
	Design	Nana Boateng	3567-000	Ivory	<b>\$91.00</b>
	Application	Upholstery	3567-002	Champagne	
	Content	30% Viscose, 27% Polyester, 16% Cotton,	3567-008	Carob	
		12% Wool, 12% Acrylic, 3% Nylon	3567-020	Merino	
	Width	54"	3567-010	Dusty Grey	
	Repeat	None	3567-001	Noir	
	Weight per Linear Yard	16.87 Ounces			
	Finish	None			
	Abrasion	69,000 Double Rubs Wyzenbeek			
	Flammability	California TB 117-2013			
		UFAC, Class 1			
		NFPA 260, Class 1			
	Sustainability	SCS Indoor Advantage™ Gold			
		FR Free, LBC Red List Free			
		REACH Compliant			
	Cleaning Code	S			
	Bernhardt Design	Seating Grade 10			
	Origin	Italy			
sella					
	Design	Chrissa Amuah	3542-900	Dust	<b>\$77.00</b>
	Application	Upholstery	3542-904	Sky	
	Content	55% Polyester, 34% Post-Consumer	3542-944	Cobalt	
		Recycled Polyester, 11% Solution	3542-977	Brick	
		Dyed Nylon	3542-955	Sun	
	Width	56¼"		<b>Performance</b>	
	Repeat	Vertical: 25⅙", Horizontal: 28⅙"			
	Weight per Linear Yard	27.8 Ounces		<b>Bleach cleanable</b> with 5:1 water/household bleach	
	Finish	Acrylic Backing, Stain Resistant		solution that must be extracted within 30 seconds	
	Abrasion	100,000 Double Rubs Wyzenbeek*			
	Flammability	California TB 117-2013			
		UFAC, Class 1			
		NFPA 260, Class 1			
	Sustainability	SCS Indoor Advantage™ Gold			
		FR Free, LBC Red List Free			
	Cleaning Code	WS			
	Bernhardt Design	Seating Grade 7			
	Origin	United States			
sereno					
	Design	Teri Figliuzzi	3538-010	Ash	<b>\$71.00</b>
	Application	Upholstery	3538-011	Night	
	Content	56% Polyester, 32% Polyacrylic, 12% Wool	3538-020	Taupe	
	Width	57"	3538-022	Sand	
	Repeat	None	3538-025	Ochre	
	Weight per Linear Yard	8.43 Ounces	3538-033	Sprout	
	Finish	None	3538-034	Jade	
	Abrasion	100,000 Double Rubs Wyzenbeek*	3538-043	Lake	
	Flammability	California TB 117-2013	3538-044	Dusk	
		UFAC, Class 1	3538-055	Sun	
		NFPA 260, Class 1	3538-066	Sunset	
		ASTM E84, Unadhered Class 2	3538-088	Fig	
	Sustainability	SCS Indoor Advantage™ Gold			
		PFAS Free, FR Free, LBC Red List Free		Dye lots may vary	
	Cleaning Code	S - Dry Clean Only			
	Bernhardt Design	Seating Grade 6			
	Origin	Italy			



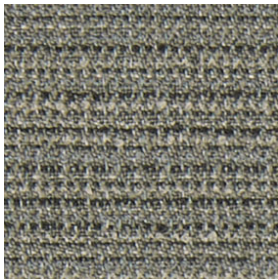
pattern name                      specifications                      number    description                      net price per yard

shift



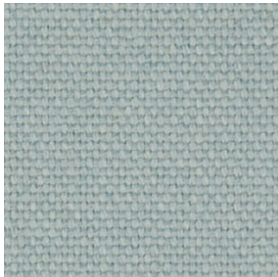
Design	Teri Figliuzzi	3496-901	Dust	<b>\$86.00</b>
Application	Upholstery	3496-902	Cashew	
Content	36% Rayon, 30% Cotton, 20% Nylon, 14% Polyester	3496-903	Lemongrass	
Width	53"	3496-913	Cactus	
Repeat	Vertical: 13¼", Horizontal: 13¾"	3496-943	Slate	
Weight per Linear Yard	24.06 Ounces	3496-904	Scuba	
Finish	Acrylic Backing, DEFEND® Free	3496-988	Blackberry	
Abrasion	99,000 Double Rubs Wyzenbeek*	3496-921	Bay	
Flammability	California TB 117-2013 UFAC, Class 1 NFPA 260, Class 1	3496-966	Chili	
Sustainability	SCS Indoor Advantage™ Gold FR Free, LBC Red List Free			
Cleaning Code	S			
Bernhardt Design	Seating Grade 8			
Origin	United States			

sketch



Design	Teri Figliuzzi	3548-902	Birch	<b>\$48.00</b>
Application	Upholstery, Wrapped Panel	3548-925	Bamboo	
Content	100% Polyester	3548-934	Sprout	
Width	54"	3548-904	Slate	
Repeat	Vertical: 9¾", Horizontal: 6¾"	3548-910	Mica	
Weight per Linear Yard	15.38 Ounces	3548-912	Taupe	
Finish	Acrylic Backing, DEFEND® Free	3548-920	Bark	
Abrasion	100,000 Double Rubs Wyzenbeek*	3548-921	Stone	
Flammability	California TB 117-2013 UFAC, Class 1, NFPA 260, Class 1	3548-987	Iron	
	ASTM E84, Unadhered Class 2	3548-944	Indigo	
Sustainability	SCS Indoor Advantage™ Gold PFAS Free, FR Free, LBC Red List Free			<b>Performance</b>
Cleaning Code	WS			<b>Bleach cleanable</b> with 4:1 water/household bleach solution that must be extracted within 30 seconds
Bernhardt Design	Seating Grade 2			
Origin	United States			

smooth



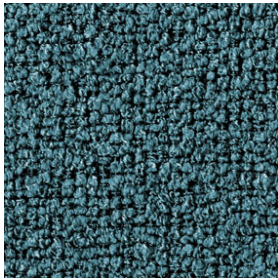
Application	Upholstery	3552-000	Chalk	<b>\$63.00</b>
Content	55% Recycled Acrylic, 25% Polyester 20% Recycled Wool	3552-002	Sand	
Width	58"	3552-012	Khaki	
Repeat	None	3552-020	Mushroom	
Weight per Linear Yard	24 Ounces	3552-022	Taupe	
Finish	None	3552-001	Midnight	
Abrasion	100,000 Double Rubs Wyzenbeek*	3552-010	Platinum	
Flammability	California TB 117-2013 UFAC, Class 1 NFPA 260, Class 1	3552-011	Aluminum	
Sustainability	SCS Indoor Advantage™ Gold Recycled Content, FR Free, LBC Red List Free	3552-101	Carbon	
		3552-066	Ruby	
		3552-068	Mahogany	
Cleaning Code	S	3552-076	Rust	
Bernhardt Design	Seating Grade 4	3552-030	Olive	
Origin	Italy	3552-033	Forest	
		3552-043	Ocean	
		3552-004	Powder	
		3552-040	Slate	
		3552-044	Denim	

Sustainable

Dye lots may vary

pattern name specifications number description net price per yard

snug



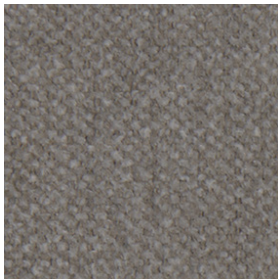
Design	Chrissa Amuah	3546-012	Mushroom	<b>\$91.00</b>
Application	Upholstery, Wrapped Panel	3546-022	Woodland	
Content	100% Polyester	3546-033	Hedge	
Width	55"	3546-003	Aloe	
Repeat	None	3546-040	Deep Sea	
Weight per Linear Yard	30 Ounces	3546-044	Cobalt	
Finish	Light Acrylic Backing	3546-077	Cayenne	
Abrasion	100,000 Double Rubs Wyzenbeek*	3546-035	Pollen	
Flammability	California TB 117-2013			
	UFAC, Class 1			<b>Performance</b>
	NFPA 260, Class 1			<b>Bleach cleanable</b> with 10:1 water/household bleach solution that must be extracted within 30 seconds
	ASTM E84, Unadhered Class 1			
Sustainability	SCS Indoor Advantage™ Gold			
	PFAS Free, FR Free, LBC Red List Free			
Cleaning Code	WS			
Bernhardt Design	Seating Grade 10			
Origin	Italy			

soft


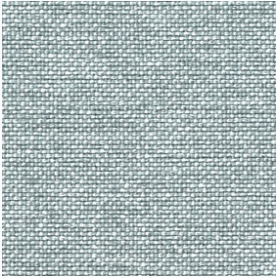



Application	Upholstery	3553-000	pearl	<b>\$69.00</b>
Content	100% Acrylic	3553-002	sand	
Width	55"	3553-020	mushroom	
Repeat	None	3553-022	taupe	
Weight per Linear Yard	25 Ounces	3553-012	greige	
Finish	None	3553-001	midnight	
Abrasion	100,000 Double Rubs Wyzenbeek*	3553-014	carbon	
Primary Use	Upholstery	3553-066	mahogany	
Flammability	California TB 117-2013	3553-078	melon	
	UFAC, Class 1	3553-077	rust	
	NFPA 260, Class 1	3553-043	aqua	
Sustainability	SCS Indoor Advantage™ Gold	3553-044	denim	
	PFAS Free, FR Free, LBC Red List Free			
Cleaning Code	S			Dye lots may vary
Bernhardt Design	Seating Grade 5			
Origin	Italy			

soft spun



Application	Upholstery	3563-000	Bisque	<b>\$53.00</b>
Content	79% Polyester, 15% Cotton, 6% Acylic	3563-010	Drizzle	
Width	55"	3563-110	Marble	
Repeat	None	3563-022	Roasted	
Weight per Linear Yard	13.04 Ounces	3563-011	Koala	
Finish	Easy Clean - PFAS Free	3563-001	Evening	
Abrasion	99,000 Double Rubs Wyzenbeek	3563-044	Blueprint	
Flammability	California TB 117-2013	3563-088	Wild Orchid	
	UFAC, Class 1	3563-066	Rustic Rose	
	NFPA 260, Class 1	3563-077	Cider	
Sustainability	SCS Indoor Advantage™ Gold	3563-003	Pesto	
	PFAS Free, FR Free, LBC Red List Free			
Cleaning Code	S			
Bernhardt Design	Seating Grade 3			
Country of Origin	Italy			

pattern name	specifications	number	description		net price per yard
<b>solo</b>					
	Design	Tift Merritt	3505-000	Birch	<b>\$49.00</b>
	Application	Upholstery	3505-002	Fawn	
	Content	84% Polyester, 16% Acrylic	3505-010	Ash	
	Width	57"	3505-011	Graphite	
	Repeat	None	3505-012	Kohl	
	Weight per Linear Yard	18.55 Ounces	3505-020	Stone	
	Finish	None	3505-022	Bay	
	Abrasion	100,000 Double Rubs Wyzenbeek*	3505-101	Cinder	
	Flammability	California TB 117-2013	3505-004	Cloud	
		UFAC, Class 1	3505-044	Midnight	
		NFPA 260, Class 1	3505-066	Poppy	
	Sustainability	SCS Indoor Advantage™ Gold	Texture may vary		
		PFAS Free, FR Free, LBC Red List Free			
	Cleaning Code	WS			
Bernhardt Design	Seating Grade 2				
Origin	China				
<b>still</b>					
	Design	Chrissa Amuah	3544-010	Ash	<b>\$50.00</b>
	Application	Upholstery	3544-100	Smoke	
	Content	72% Post-Consumer Recycled Polyester, 28% Virgin Polyester	3544-001	Coal	
	Width	54"	3544-200	Fawn	
	Repeat	None	3544-020	Taupe	
	Weight per Linear Yard	15 Ounces	3544-222	Woodland	
	Finish	Acrylic Backing, PFAS Free Stain Resistant	3544-030	Hedge	
			3544-033	Forest	
	Abrasion	100,000 Double Rubs Wyzenbeek*	3544-043	Azure	
	Flammability	California TB 117-2013	3544-444	Ink	
		UFAC, Class 1	3544-004	Sky	
		NFPA 260, Class 1	3544-040	Bluebird	
	Sustainability	SCS Indoor Advantage™ Gold	3544-044	Cobalt	
		Recycled Content, FR Free	3544-088	Berry	
		LBC Red List Free	3544-066	Wine	
	Cleaning Code	WS	3544-072	Yam	
	Bernhardt Design	Seating Grade 2	3544-077	Spice	
Origin	Canada	3544-055	Sun		
			<b>Sustainable</b>		
<b>stitch</b>					
	Design	Kiki Van Eijk + Joost Van Bleiswijk	3426-900	String	<b>\$69.00</b>
	Application	Upholstery	3426-910	Mica	
	Content	53% Polyester, 47% Recycled Polyester (22% Post-Consumer, 25% Post-Industrial)	3426-944	Ink	
			3426-988	Plum	
	Width	58"	<b>Performance</b>		
	Repeat	Vertical: 9¾", Horizontal: 7½"	<b>Bleach cleanable</b> with 5:1 water/household bleach solution that must be extracted within 30 seconds		
	Weight per Linear Yard	24.32 Ounces			
	Finish	Acrylic Backing			
	Abrasion	80,000 Double Rubs Wyzenbeek*			
	Flammability	California TB 117-2013			
		UFAC, Class 1			
		NFPA 260, Class 1			
	Sustainability	SCS Indoor Advantage™ Gold			
		FR Free, LBC Red List Free			
Cleaning Code	WS				
Bernhardt Design	Seating Grade 5				
Origin	United States				

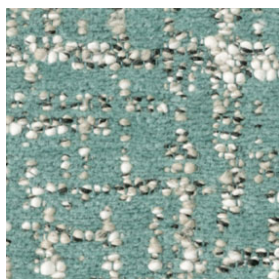
pattern name specifications number description net price per yard

tailored



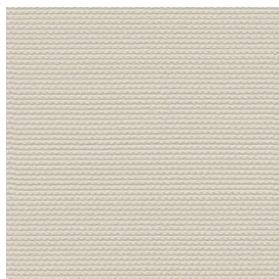
Application	Upholstery	3557-902	Dusty Blonde	<b>\$89.00</b>
Content	44% Viscose, 29% Polyester, 27% Cotton	3557-928	Toasted Apricot	
		3557-962	Blushed Chestnut	
Width	55"	3557-987	Faded Rose	
Repeat	None	3557-952	Golden Peach	
Weight per Linear Yard	21.05 oz.	3557-922	Brassed Brown	
Finishe	None	3557-943	Minted Green	
Abrasion	44,000 Double Rubs Wyzenbeek	3557-914	Iced Blue	
Flammability	California TB 117-2013	3557-944	Denim Grey	
	UFAC, Class 1	3557-988	Chromed Lavender	
	NFPA 260, Class 1	3557-901	Silver Grey	
Sustainability	SCS Indoor Advantage™ Gold PFAS Free, FR Free, LBC Red List Free	3557-912	Frosted Ink	
Cleaning Code	S			
Bernhardt Design	Seating Grade 9			
Origin	Italy			

twilight



Design	Farg & Blanche	3532-925	Bark	<b>\$91.00</b>
Application	Upholstery	3532-912	Twig	
Content	49% Polyester, 32% Cotton, 16% Polyacrylic, 3% Polyamide	3532-910	Storm	
		3532-911	Obsidian	
Width	56"	3532-903	Lichen	
Repeat	Vertical: 22%", Horizontal: 13¼"	3532-930	Aloe	
Weight per Linear Yard	30 Ounces	3532- 943	Sea	
Finish	None	3532-944	Dusk	
Abrasion	100,000 Double Rubs Wyzenbeek*	3532-966	Crimson	
Flammability	California TB 117-2013			
	UFAC, Class 1		Dye lots may vary	
	NFPA 260, Class 1			
Sustainability	SCS Indoor Advantage™ Gold PFAS Free, FR Free			
Cleaning Code	S			
Bernhardt Design	Seating Grade 10			
Origin	Italy			

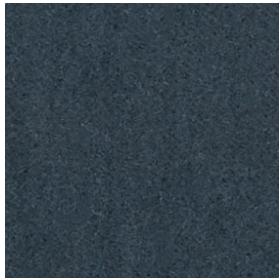
urban



Design	Teri Figliuzzi	3448-002	Limestone	<b>\$54.00</b>
Application	Upholstery, Direct Glue Wall, Wrapped Panel	3448-100	Mica	
		3448-010	Shadow	
Content	100% Post-Consumer Recycled Polyester	3448-001	Charcoal	
Width	54"	3448-040	Slate	
Repeat	None	3448-044	Cobalt	
Weight per Linear Yard	16 Ounces	3448-043	Pool	
Finish	Acrylic Backing, PFAS Free Stain Resistant	3448-033	Grass	
		3448-300	Sprout	
Abrasion	95,000 Double Rubs Wyzenbeek*	3448-003	Lime	
Flammability	California TB 117-2013	3448-025	Sun	
	UFAC, Class 1,	3448-077	Zest	
	NFPA 260, Class 1	3448-072	Siren	
	ASTM E84, Adhered & Unadhered Class 1	3448-066	Poppy	
Sustainability	SCS Indoor Advantage™ Gold Recycled Content, FR Free, LBC Red List Free	3448-008	Punch	
Cleaning Code	WS		<b>Performance</b>	
Bernhardt Design	Seating Grade 3			
Origin	Canada			

pattern name specifications number description net price per yard

valencia



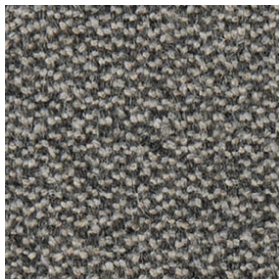
Application	Upholstery	3295-002	Pine Bark	<b>\$163.00</b>
Content	Face: 100% Mohair Back: 100% Cotton	3295-008	Cinder	
Width	54"	3295-043	Oil Blue	
Repeat	None	3295-004	Crown Blue	
Weight per Linear Yard	29 Ounces	3295-044	Mood Indigo	
Finish	None	3295-444	Midnight Navy	
Abrasion	100,000 Double Rubs Wyzenbeek*	3295-001	Phantom	
Primary Use	Upholstery	3295-018	Shale	
Flammability	California TB 117-2013 UFAC, Class 1 NFPA 260, Class 1	3295-022	Olive Brown	
Sustainability	SCS Indoor Advantage™ Gold Rapidly Renewable, PFAS Free, FR Free, LBC Red List Free			
Cleaning Code	X			
Bernhardt Design	Seating Grade 11			
Origin	Netherlands			

vella



Application	Upholstery, Wrapped Panel	3554-000	Buttercream	<b>\$53.00</b>
Content	100% Polyester	3554-002	Bisque	
Width	54"	3554-021	Putty	
Repeat	None	3554-020	Cobblestone	
Weight Per Linear Yard	20 Ounces	3554-026	Chestnut	
Finish	Soil and Stain Repellent	3554-055	Dijon	
Abrasion	95,000 Double Rubs Wyzenbeek	3554-077	Ember	
Flammability	California TB 117-2013 UFAC, Class 1 NFPA 260, Class 1	3554-066	Beet	
Sustainability	ASTM E84, Unadhered Class 1 SCS Indoor Advantage™ Gold PFAS Free, FR Free	3554-080	Blush	
Cleaning Code	S	3554-028	Bison	
Bernhardt Design	Seating Grade 3	3554-022	Malt	
Origin	United States	3554-033	Jasper	
		3554-030	Forest	
		3554-044	Admiral	
		3554-040	Bombay	
		3554-034	Ocean	
		3554-004	Sky	
		3554-018	Slate	
		3554-008	Thistle	
		3554-010	Ashen	
		3554-011	Chrome	
		3554-001	Peppercorn	

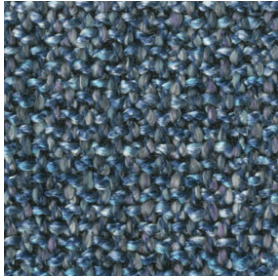
venture



Design	Teri Figliuzzi	3484-901	Shadow	<b>\$94.00</b>
Application	Upholstery, Wrapped Panel	3484-911	Charcoal	
Content	75% Wool, 15% Alpaca, 10% Polyamide	3484-922	Bison	
Width	54"	3484-955	Citrus	
Repeat	None	3484-903	Aloe	
Weight per Linear Yard	21.1 Ounces	3484-933	Grass	
Finish	None	3484-943	Ocean	
Abrasion	99,000 Cycles Martindale*	3484-904	Twilight	
Flammability	California TB 117-2013 UFAC, Class 1, NFPA 260, Class 1	3484-944	Royal	
Sustainability	ASTM E84, Unadhered Class 1 SCS Indoor Advantage™ Gold Rapidly Renewable, FR Free LBC Red List Free	3484-988	Orchid	
Cleaning Code	X	3484-966	Rouge	
Bernhardt Design	Seating Grade 10	3484-967	Cyanne	
Origin	Italy	3484-977	Persimmon	

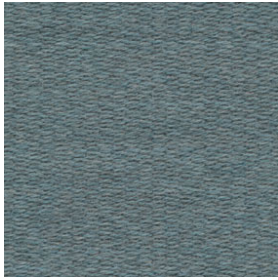
pattern name	specifications	number	description	net price per yard
--------------	----------------	--------	-------------	--------------------

vista



Design	Teri Figliuzzi	3525-002	Limestone	<b>\$54.00</b>
Application	Upholstery	3525-010	Mist	
Content	62% Acrylic, 25% Viscose,	3525-001	Granite	
	13% Polyester	3525-055	Citron	
Width	56"	3525-043	Pacific	
Repeat	None	3525-044	Indigo	
Weight per Linear Yard	18.02 Ounces	3525-066	Sumac	
Finish	None			
Abrasion	100,000 Double Rubs Wyzenbeek*			
Flammability	California TB 117-2013			
	UFAC, Class 1			
Sustainability	NFPA 260, Class 1			
	SCS Indoor Advantage™ Gold			
Cleaning Code	PFAS Free, FR Free			
	S			
Bernhardt Design	Seating Grade 3			
Origin	Turkey			

vivid



Application	Upholstery, Wrapped Panel	3523-000	Ash	<b>\$72.00</b>
Content	92% Wool, 8% Polyamide	3523-101	Carbon	
Width	55"	3523-012	Dust	
Repeat	None	3523-002	Fawn	
Weight per Linear Yard	17.09 Ounces	3523-022	Bay	
Finish	None	3523-003	Sage	
Abrasion	90,000 Cycles Martindale*	3523-033	Spruce	
Primary Use	Upholstery, Wrapped Panel	3523-100	Cloud	
Flammability	California TB 117-2013	3523-013	Slate	
	UFAC, Class 1	3523-034	Fjord	
Sustainability	NFPA 260, Class 1	3523-043	Lake	
	ASTM E84, Unadhered Class 1	3523-044	Ink	
Cleaning Code	SCS Indoor Advantage™ Gold	3523-040	Midnight	
	Rapidly Renewable, PFAS Free,	3523-087	Iron	
Bernhardt Design	FR Free, LBC Red List Free	3523-008	Blush	
	S	3523-068	Redwood	
Origin	Seating Grade 6	3523-078	Clay	
	Denmark	3523-077	Cider	

Sustainable

Dye lots may vary