

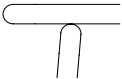
Cup Table Collection by PLANK



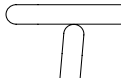
The Cup nesting tables are sold as a set of two with heights 13¼" and 16". The top is available in HPL Fundermax, HPL Fenix and HPL Marmor. Aluminum base finish selections include black powder coat or chrome.

Edge Profiles

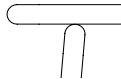
Marmor



HPL Fundermax



HPL Fenix



Solid Surface Selections

HPL Fundermax

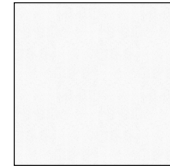
Standard Finish

FM01 Black - 10 mm

FM02 White - 10 mm



HPL Fundermax
Black



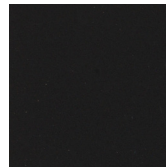
HPL Fundermax
White

HPL Fenix

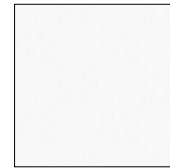
Standard Finish

FE01 Black, 10 mm

FE02 White, 10 mm



HPL Fenix
Black



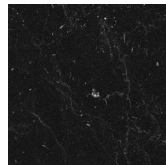
HPL Fenix
White

HPL Marmor

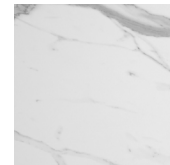
Standard Finish

MAR01 Black, 10 mm

MAR02 White, 10 mm



HPL Marmor
Black



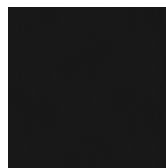
HPL Marmor
White

Base Finish Selections

Aluminum

Standard Finish

01 Black Powder Coat



Black Powder Coat

Chrome



CH Chrome



Nesting Table
Black powder coat or chrome base

PLANK

description	sku	w	d	h	HPL Fundermax	HPL Fundermax	HPL Fenix	HPL Fenix	HPL Marmor	HPL Marmor
					FM01 black	FM02 white	FE01 black	FE02 white	MAR01 black	MAR02 white
occasional height	9100-51	25¼	19⅝	16	\$ 1420	\$ 1583	\$ 1583	\$ 1759	\$ 1467	\$ 1654
		18⅞	15¼	13¼						
Set includes two tables: 25¼" x 19⅝" and 18⅞" x 15¼"										



sku
9100-51 occasional height

base finish
01 black powder coat
CH chrome

top material
FM01 black - hpl fundermax
FM02 white - hpl fundermax
FE01 black - hpl fenix
FE02 white - hpl fenix
MAR01 black - hpl marmor
MAR02 white - hpl marmor

9 | 1 | 0 | 0 | - | 5 | 1 |