

larkin credenza price list

january 2025



veneer selections	3
powder coat selections	4
inset top selections	5
collection overview	6-8
accessories	9
credenzas	10
inset tops	11-12
marker board	13
tackboard	14
terms and conditions	15-17
guaranteed freight	18
guaranteed freight - canada	19

SCS Indoor Advantage™ Gold and LEVEL® 1 certified. See terms and conditions for additional environmental information.

Veneer Selections

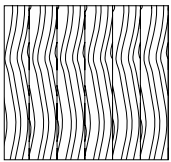
A three character sku identifies each species as well as the standard finish offered. Individual components are priced with standard finish. Special finishes on veneers made to customer specifications are subject to factory approval and a 10% net upcharge with a \$500 net minimum.

Transparent stains and sealers are applied in multiple steps to enhance the beauty of the natural wood. A durable, baked-on, top-coat of conversion varnish

or UV topcoat is applied to protect the product. It is recommended that felt, cork or fabric backed desk pads and accessories are used on worksurfaces to minimize wear.

When specifying light finishes the natural characteristics of the wood will be visible and color will vary. Paint finishes are available as custom orders. See terms and conditions for additional finish information.

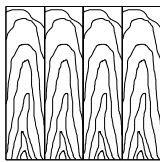
OAK Oak
Rift Cut



Standard Finish

- *871 870 839
- 837 860 861
- 865 836 866
- 872 805 845

WLT Walnut
Flat Cut



Standard Finish

- 872 861
- *870 823
- 860 866
- 839

**NOTE: Both solid wood and veneers are used in the design of the Larkin credenza. This mixing of materials will show a tone/color difference between the parts when natural finishes are specified. Slight shading and color differences may be noticed between the two materials.*

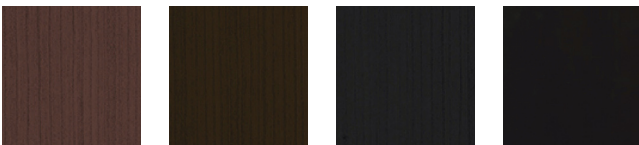
OAK Select Finishes

- M73 M72 M75
- M74 M76 M77
- M71

OAK Oak



- *871 837 865 872 870 860 836 805



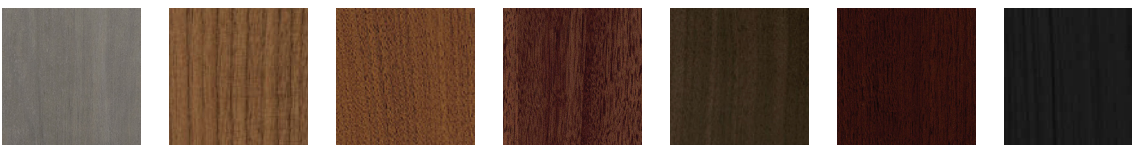
- 839 861 866 845

OAK Select Finishes



- M73 Whitewash M74 Fawn M71 Blonde M72 Toast M76 Caramel M75 Smoke M77 Coffee

WLT Walnut



- 872 *870 860 839 861 823 866

Foot Cap Finish



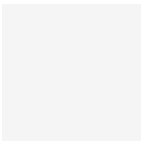
PA Polished Aluminum

Available on the foot detail only.

Powder Coat Selections

A two character sku identifies each powder coat finish offered. Individual skus are priced with standard metal finish. Non-standard finishes may incur an additional charge. All Intersection metal components are only offered in powder coat finishes.

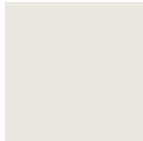
Powder Coat Finishes



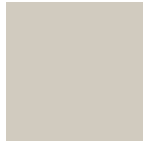
WH Satin White



AL Matte Aluminum



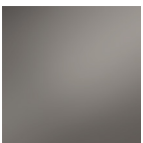
EC Ecru



LA Latte



GR Graphite



BZ Bronze



SG Sage



IG Iron Grey



RD Black Red



BK Matte Black

Optional Powder Coat Colors - RAL

- Lead Time - Three weeks additional lead-time after color approval
- Net Up-charge - \$1000 for colors shown in Bernhardt Design RAL Powder Coat Selector
- Minimum Order Quantity - None
- Approval Sample Cost - None
- Combining Products - One up-charge is applicable for multiple products on a single purchase order when they are in the same color

Inset Top Selections

Larkin credenzas feature an inset top that integrates into the top of the credenza base and rests on a finished subtop. **Inset tops are required on all credenzas and are specified separately.** Choose from veneer, glass or solid surface materials.

Veneer Selection



FL ½" Flat Edge

Note: Veneer inset tops are specified separately.



Veneer Top Inset

Glass Top Selections



PF Polished Flat Edge

GPW Back-Painted White - ½" Thick

GEW Etched Back-Painted White Glass - ½" Thick

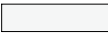
GEB Etched Back-Painted Black Glass - ¾" Thick

Note: Glass inset tops are specified separately.



Glass Top Inset

Solid Surface Selections

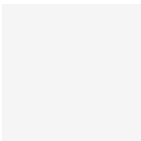


PHL Phenolic ½" Flat Edge

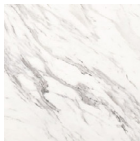
STW Designer White, Wilsonart 15512 SOLICOR, D354-60 Matte Finish

TCB Calcutta Blanc, Wilsonart TS501 THINSCAPE

STB Black Velvet, Wilsonart 15505 Compact Traceless



STW



TCB



STB

Note: Phenolic inset tops are specified separately.



Solid Surface Top Inset

Larkin

Modern elegance and simplicity describe the Larkin credenza where the attention to detail speaks volumes. The credenza is finished on all sides and can be placed against a wall or used within the center of a room providing a gentle division of space.

Metal shelves seem to float on top of the wood shelf supports that are secured to solid wood posts. The posts feature vertical wood grain, that span the entire height of the credenza. An upholstered tackboard and a glass marker board that hang from the metal shelves are also offered.

Larkin credenzas are available in three sizes, 57", 75" and 87" wide and feature an inset top that sits below the credenza edge. Inset tops are required on all credenzas and are available in wood, glass or solid surface materials.

Use the credenza alone or pair it with one or more of the Larkin meeting tables to create a modern work environment.



Larkin Credenza

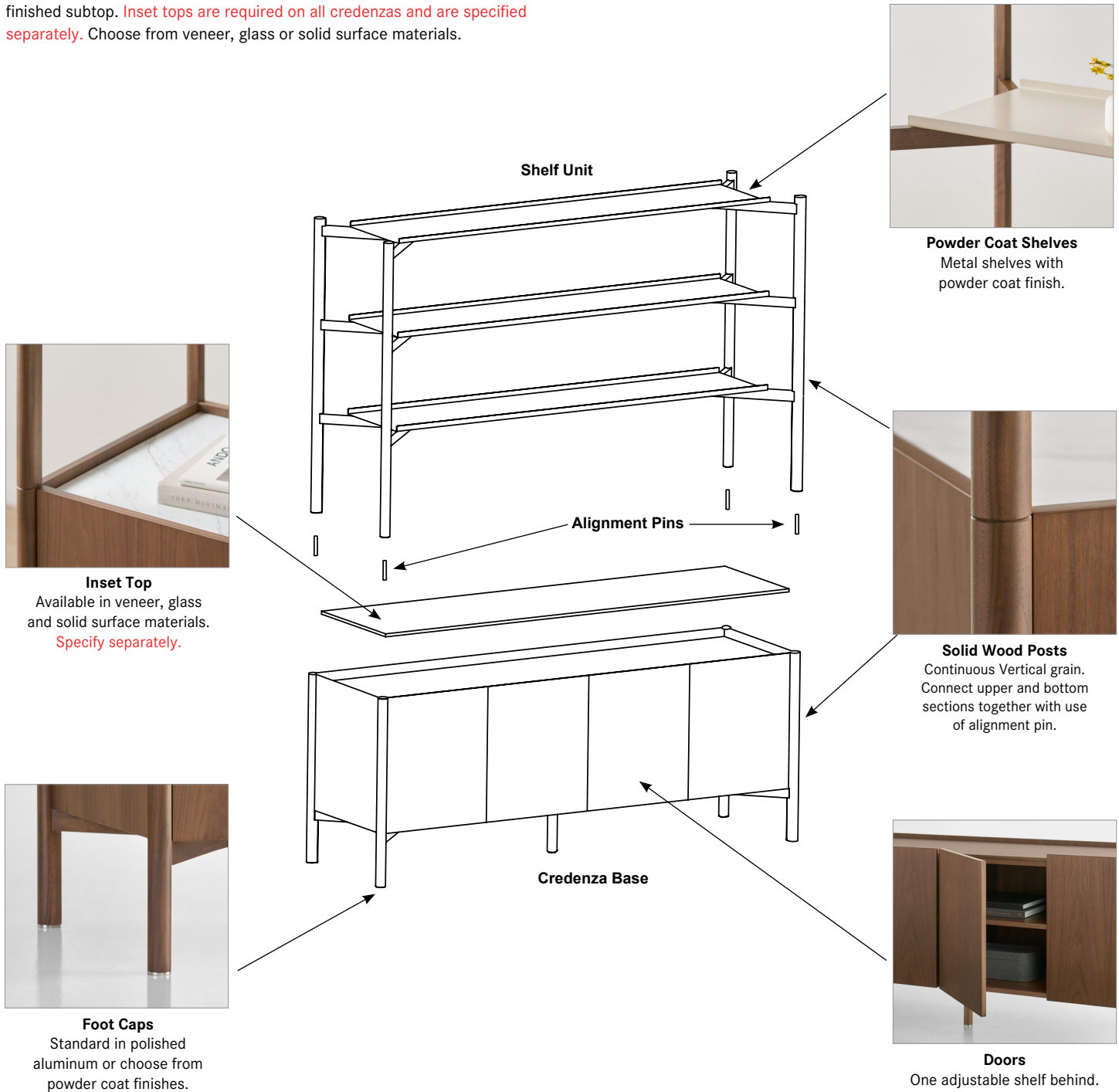
The Larkin Credenza consists of a shelf unit, inset top and credenza base.

The shelf unit consists of a solid wood frame and metal shelves. The frame features solid wood posts that attach with the use of alignment pins to the posts on the credenza base. Metal shelves come standard with a powder coat finish. Choose from any of the Bernhardt standard powder coat finishes.

The inset top integrates into the top of the credenza base and rests on a finished subtop. **Inset tops are required on all credenzas and are specified separately.** Choose from veneer, glass or solid surface materials.

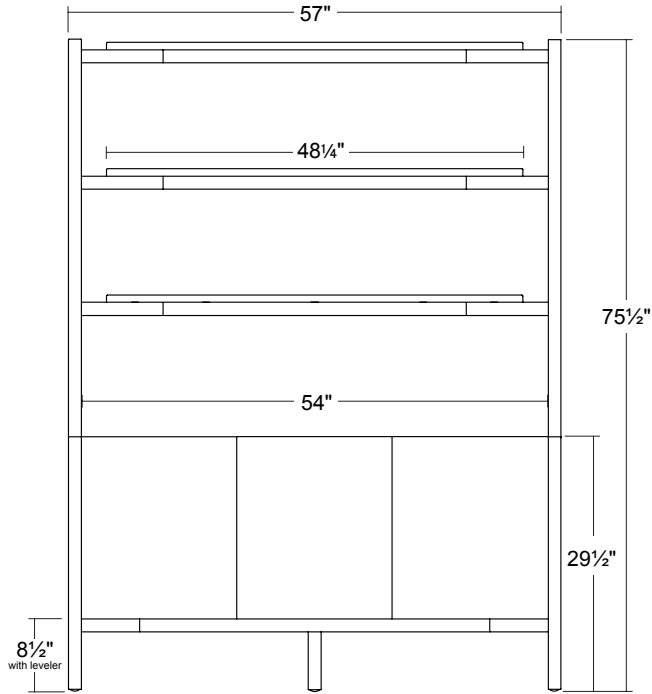
The credenza base features a solid wood base and frame, with one fixed shelf behind each door. Foot caps come standard in polished aluminum and are available with Bernhardt powder coat finishes.

Instructions on assembling these sections are shipped with the credenza.

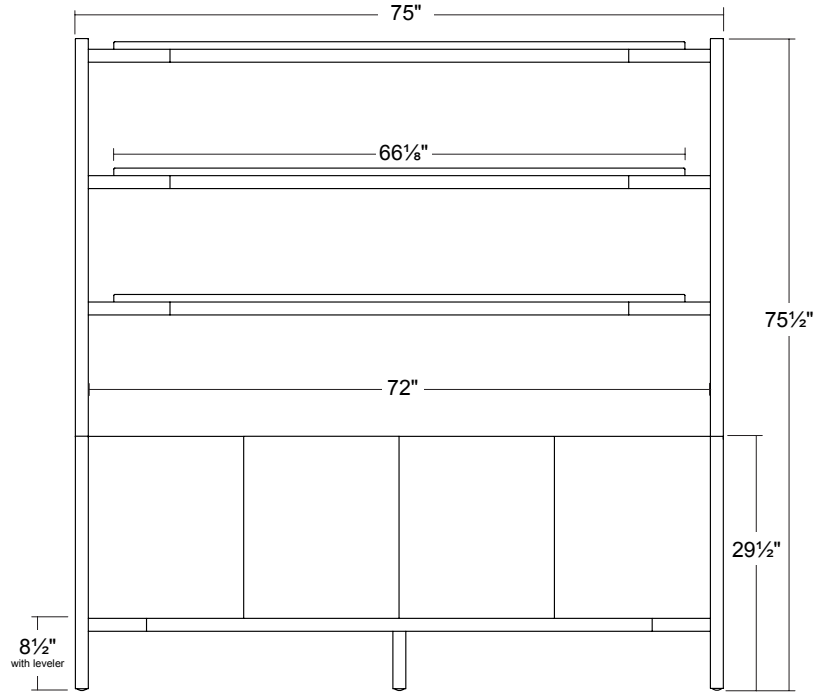


Larkin Credenzas

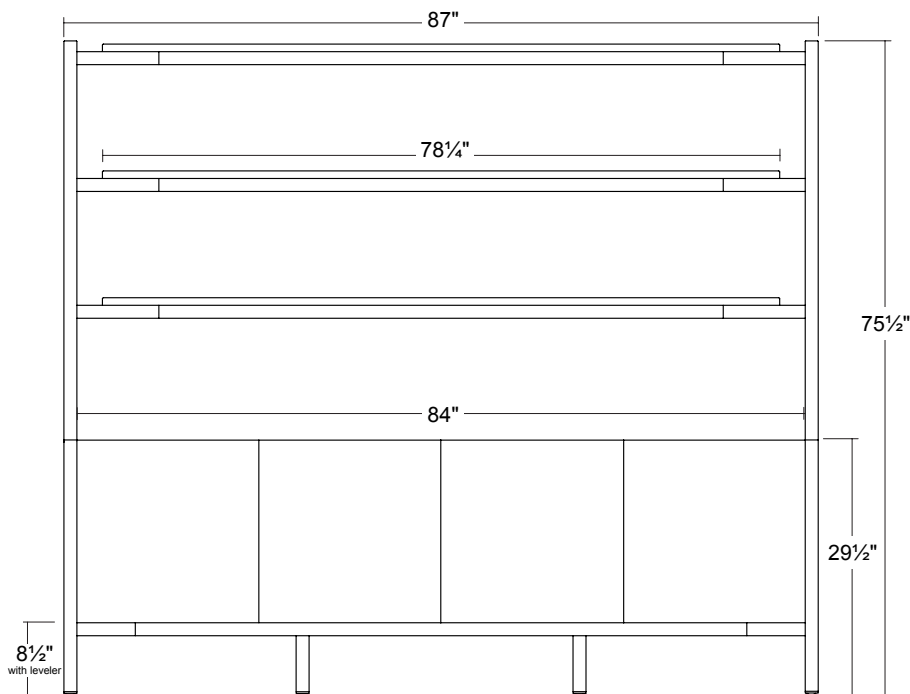
Height and Measurements



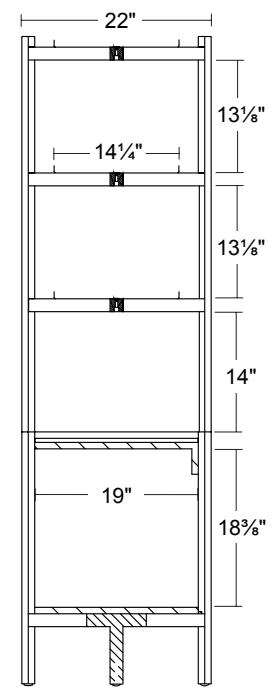
Front View
57" Credenza



Front View
75" Credenza



Front View
87" Credenza



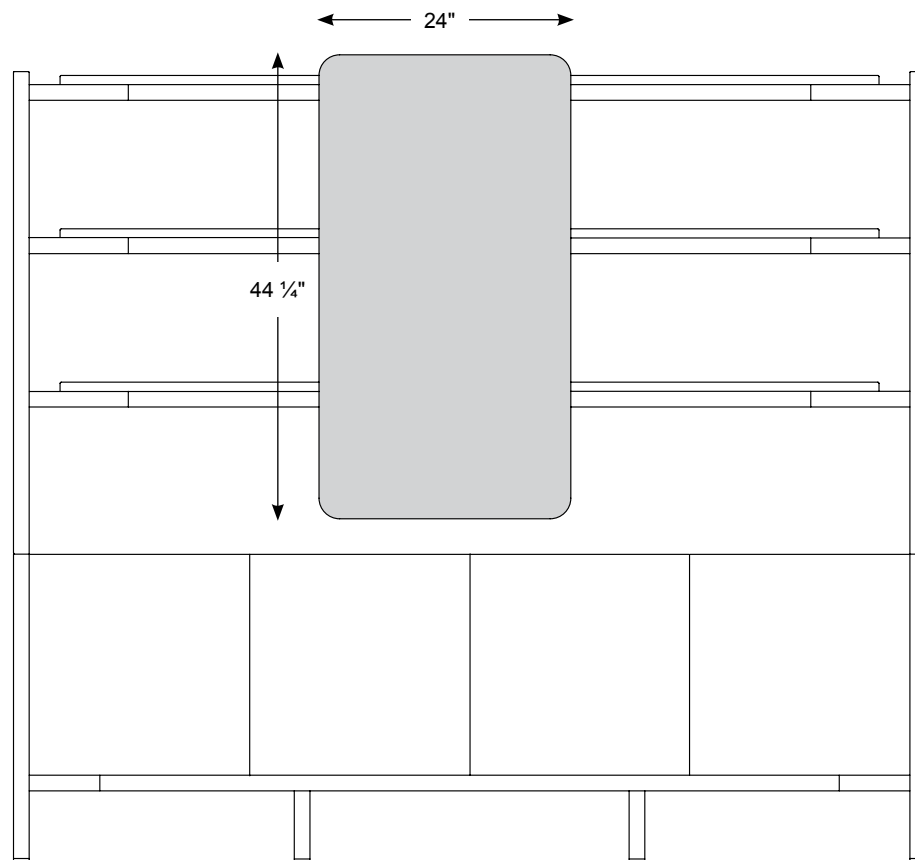
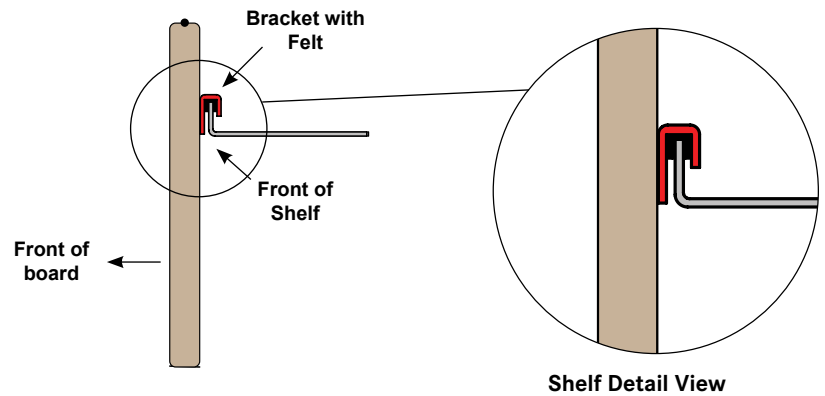
Side View

Tackboard and Marker Board



The Larkin credenza offers an upholstered tackboard or a ¼" back-painted white glass marker board.

The bracket can easily be moved along the shelf to customize the position of the board. Multiple boards can be placed along the shelf providing a visual and audio barrier within the room. Two brackets come standard.

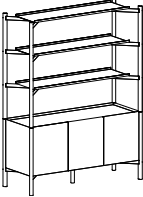
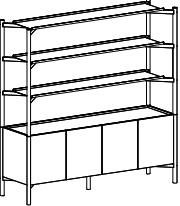
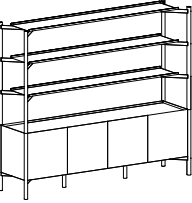


Tackboard and Marker Board Front View



credenzas

Solid wood shelf unit, posts and credenza frame.
 Metal shelves standard with powder coat
 Inset tops are required on all credenzas. Specify separately.
 Base has an adjustable shelf behind each door
 Polished aluminum foot cap standard, powder coat colors available.

description	sku	w	d	h	specifications	OAK oak WLT walnut
 57" credenza	CDD	57	22	75½		\$ 13250
 75" credenza	CDG	75	22	75½		14500
 87" credenza	CDI	87	22	75½		15250

specification codes example: LZS XXX

series	sku
larkin	
L Z S	


material + finish code example: WH PA OAK 870

shelf finish	foot cap finish	credenza material	credenza finish
WH satin white powder coat EC ecru powder coat LA latte powder coat AL matte aluminum powder coat GR graphite powder coat BZ bronze powder coat IG iron grey powder coat SG sage powder coat RD black red powder coat BK matte black powder coat	PA polished aluminum WH satin white powder coat EC ecru powder coat LA latte powder coat AL matte aluminum powder coat GR graphite powder coat BZ bronze powder coat IG iron grey powder coat SG sage powder coat RD black red powder coat BK matte black powder coat	OAK oak WLT walnut	see larkin pages



inset tops

inset tops are required for all Larkin credenzas
specify wood, glass or solid surface material


description	sku	w	d	h	OAK oak
					WLT walnut
 <p>wood tops</p> <p>1/2" wood top specify credenza separately</p>	CTD	53 3/8"	19"	1/2"	\$ 1600
		1368 mm	482 mm	13 mm	
	CTG	71 7/8"	19"	1/2"	1750
		1826 mm	482 mm	13 mm	
	CTI	83 3/8"	19"	1/2"	1800
		2130 mm	482 mm	13 mm	

specification codes example: LZS-SKU-PF

series	sku	edge
larkin		FL 1/4" flat
L Z S -	-	F L

material/finish code example: OAK 845

material	finish
OAK oak WLT walnut	see larkin finish page

description	sku	w	d	h	GPW	GEW etched	GEB etched
					back-painted white glass	back-painted white glass	back-painted black glass
 <p>glass tops</p> <p>specify material code GPW, GEW GPW 1/2" thick glass top GEW 1/2" thick glass top specify credenza separately</p>	CTD	53 3/8"	19"	1/2"	\$ 1850	\$ 1850	-
		1368 mm	482 mm	13 mm			
	CTG	71 7/8"	19"	1/2"	2350	2350	-
		1826 mm	482 mm	13 mm			
	CTI	83 3/8"	19"	1/2"	2650	2650	-
		2130 mm	482 mm	13 mm			
<p>specify material code GEB 3/8" thick glass top specify credenza separately</p>	CTD	53 3/8"	19"	3/8"	-	-	\$ 1850
		1368 mm	482 mm	10 mm			
	CTG	71 7/8"	19"	3/8"	-	-	2350
		1826 mm	482 mm	10 mm			
	CTI	83 3/8"	19"	3/8"	-	-	2650
		2130 mm	482 mm	10 mm			

specification codes example: LZS-SKU-PF

series	sku	edge
larkin		PF 1/4" polished flat
L Z S -	-	P F


material/finish code example: GPW

finish
GPW back-painted white glass GEW etched back-painted white glass GEB etched back-painted black glass



inset tops

inset tops are required for all Larkin credenzas
specify wood, glass or solid surface material

description	sku	w	d	h	PHL phenolic
 <p>solid surface top 1/2"h solid surface top specify material code PHL specify finish specify credenza separately</p>	CTD	53 7/8"	19"	1/2"	\$ 1800
		1368 mm	482 mm	13 mm	
	CTG	71 7/8"	19"	1/2"	2200
		1826 mm	482 mm	13 mm	
	CTI	83 7/8"	19"	1/2"	2900
		2130 mm	482 mm	13 mm	

specification codes example: LZS-SKU-FL

series	sku	edge
larkin		FL 1/4" flat
L Z S -	-	F L

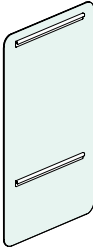
material/finish code example: PHL TCB

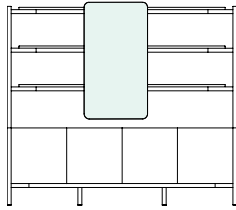
material	finish
PHL Phonelic	STW designer white TCB calcutta blanc STB black velvet
P H L	

marker board

back-painted white glass

¼" thick tempered glass

description	sku	w	d	h	specifications	price
 <p>marker board</p>	MB1	24	¼	44¼		\$ 1200



specification codes example: LZS XXX

series	sku
larkin	
L Z S	

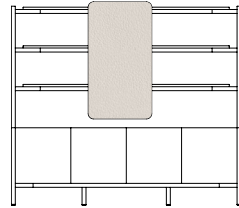
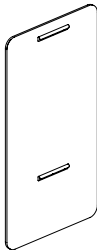


tackboard

Upholstered on both sides. When specifying textiles visit the Intersection product page on BernhardtDesign.com. In the left-hand column, select graded-in textiles. A complete list of recommended Bernhardt Textiles will be displayed here. Click on the textile of choice and you will be taken to the corresponding textile page on the Bernhardt Design website. Use the four-digit pattern number for the base fabric code shown below and the three-digit colorway number for the base fabric colorway shown below.

Fabric must be railroaded. *All COM fabrics must be preapproved by Bernhardt Design prior to application.

SKU		W	D	H	Fabric								
TB1		24"	1"	44¼"	1.6 yds								
	COM COL	1	2	3	4	5	6	7	8	9	10	11	
	555 -	705	730	744	772	797	808	826	851	872	897	1039	



specification codes example: LZS-SKU

series	sku
larkin	
L Z S -	

material + finish code example: 0000-000-BK

base fabric	base fabric colorway	bracket finish
see berhardttextiles.com	see berhardttextiles.com	WH satin white powder coat
-	-	EC ecru powder coat
		LA latte powder coat
		AL matte aluminum powder coat
		GR graphite powder coat
		BZ bronze powder coat
		IG iron grey powder coat
		SG sage powder coat
		RD black red powder coat
		BK matte black powder coat

Prices and Specifications

Prices and specifications are subject to change without notice. All prices quoted will be FOB our factories. If applicable, sales tax will be based on ship-to destination.

Bernhardt Design reserves the right to make changes in dimensions, construction, price lists, or product literature without prior notice.

All measurements and weights are approximate and subject to change without notice.

Order Entry

All orders are subject to final acceptance by Bernhardt Design in Lenoir, NC. Receipt of our acknowledgment indicates acceptance of your order subject to the terms set forth on the acknowledgment.

Bernhardt Design attempts to clarify all purchase orders. However, in the event the price list number and description on the purchase order differ, the price list number will prevail.

Changes/Cancellation

All orders in production are considered firm orders and are not subject to changes or cancellation.

Shipping

Bernhardt Design will ship in accordance with customer instructions whenever possible. For convenience, Bernhardt Design offers a guaranteed freight program (GFP). Bernhardt Design will exercise our best judgment in selecting a carrier under our GFP. When selecting a carrier, Bernhardt Design will make our best effort to meet requested delivery dates.

Transportation lead-times and delays including equipment problems, weather, general traffic, traffic accidents, customer warehouse space, labor disputes, customer changes, etc., that occur on a carrier will not be the responsibility of Bernhardt Design. Furthermore, Bernhardt Design will not be responsible for additional costs incurred due to aforementioned delays.

For customers who decline our GFP, Bernhardt Design will stage orders for pick up at 1% of the list price, or \$75 minimum.

Customer orders in production will be shipped as scheduled and will not be held. Bernhardt Design reserves the right to make partial shipments on any order, unless notified otherwise by the customer.

High quality cartoning meeting trucking and railroad specifications is standard at no extra charge. Some items may be blanket wrapped for shipment.

Freight Damage and Claims

Bernhardt Design is not liable for any damages to products that occur during transit or storage. The carrier assumes all responsibility upon acceptance of product. It is the customer's responsibility to inspect products upon receipt and file any claims with the carrier. No product should be refused. If products are received damaged, a written exception should be made on the bill of lading and an immediate inspection be requested of the carrier.

Concealed damage must be reported to the carrier within 10 business days from date of delivery. Failure to make claims shall constitute acceptance of the products and waiver any claims of defects, errors or shortages.

In the event delivery is made on a Bernhardt Design truck, the products should be carefully inspected for transit damage. If contents are damaged, the driver should be notified to call his dispatcher for immediate disposition.

Concealed damage must be reported within 10 business days from date of delivery and product/packaging held for inspection by a Bernhardt Design representative. Replacements for product damaged in shipment or storage will be manufactured upon receipt of a purchase order.

Returns

No merchandise may be returned to Bernhardt Design without written consent in the form of a Return Authorization from our Quality Assurance Department stating why item is being returned and how item will be shipped.

Unauthorized returns will be automatically refused by our receiving department as well as returns not in accordance with Bernhardt Design shipping instructions. Liability for defective merchandise shall be limited to the replacement or repair of that merchandise, and Bernhardt Design shall not be liable for other damages or losses.

Terms and Credit

Pricing and terms of sale apply to orders accepted by Bernhardt Design, and no terms, stipulations, or conditions contained in the dealer's submitted purchase orders shall have any force or effect. Bernhardt Design requires a completed and signed credit application from every dealer. Bernhardt Design also requires dealers to provide a Blanket Certificate of Resale/Use containing valid sales tax exemption number(s) for their respective state(s).

If credit has been approved, the standard terms for all Bernhardt Design products are Net 30 from the invoice date. In certain instances, as an additional condition of order acceptance, buyer may be required to provide a deposit at time of order and/or remit the balance before shipment is released. If credit has not been approved, a 100% prepayment, including any freight charges, is required prior to production.

Acceptable forms of payment include a certified check or electronic bank transfer. For information on where to send check/electronic bank information contact our Financial Services Department. If a dealer or company check is submitted, three (3) weeks should be allowed for the clearance of the check. If electronic bank transfer is submitted, one (1) week should be allowed for the clearance of the electronic bank transfer. The order is subject to cancellation if payment in full is not received within three (3) weeks from the acknowledgment date.

The dealer may not make deductions for advertising, promotions, quality problems, freight, or any other reason without prior authorization by Bernhardt Design. Such a deduction could result in the curtailment or suspension of further shipments until the matter is resolved. Delinquency notices are generated and mailed periodically. Service charges of 18% per annum will be added to each past-due transaction. Unpaid service charges

will be accrued and invoiced on a periodic basis. Past-due notices may result in orders being held until the situation is resolved. This credit hold could prevent orders from being placed into production or shipped. Orders not in production that are placed on credit hold for three (3) weeks will be subject to cancellation.

Severe past-due situations may result in the employment of a collection agency or other collection litigation. If any collection activity is necessary regarding a dealer account, the dealer will be responsible for the payment of any and all attorney and collection agency fees.

A slow payment history may result in reducing or eliminating an open line of credit. At the discretion of Bernhardt Design, amounts owed by a dealer to Bernhardt Design arising from any transaction or dealings between the dealer and Bernhardt Design may be offset against any amounts owed to the dealer by Bernhardt Design.

Warranty

Bernhardt Design will repair or replace, at its discretion, any product or part thereof which fails as the result of defects in material and workmanship, under single shift use and normal care for five years from date of shipment. This warranty shall apply only to the original purchaser.

This warranty does not cover normal wear and tear, misuse or abuse of product, dramatic temperature changes, exposure to unusual conditions or damages incurred by contact with seating products, tables, desks or other surfaces. Natural color changes, variations or movements in lumber or veneer products, exposure to extreme temperature changes and direct sunlight may cause color changes and/or surface damage. These are circumstances beyond the control of Bernhardt Design and are not warranty issues. Repair or replacement of discontinued product will be at the discretion of Bernhardt Design.

This warranty is the customer's exclusive remedy for product defect and does not apply to damage caused by a freight carrier, dealer, installer, user modification, attachments to a product, or any third party. Bernhardt Design has the exclusive right to make the final determination of product misuse or abuse. Except as stated above, Bernhardt Design makes no express or implied warranties as to any product, and in particular, makes no warranty of merchantability or of fitness for any particular purpose. Bernhardt Design shall not be liable for any consequential or incidental damages or for commercial loss arising from any product defect.

Operational Parts Warranty

Drawer glides, drawer boxes, drawer pulls, and lock mechanisms have a Life-Time Warranty for original purchaser. Power and communication components are warranted for one year.

Parts Order

Bernhardt Design parts have a \$25 net minimum per order. This does not include freight costs.

Custom Design

Bernhardt Design may alter products to meet specific needs. Contact your local sales representative when a custom design is needed. Custom designs,

if approved, require minimum quantities, additional leadtime and upcharges. A custom job number, available from your Bernhardt Design sales representative, must be submitted with purchase orders.

Orders combining custom design with standard product cannot be scheduled for production until custom items are approved. Custom design orders are not subject to revision or cancellation after acknowledgment.

COM for Tackboards

All COM must be properly tagged on the receiving documents in order for Bernhardt Design to match your fabric with your order.

Bernhardt Design will not be responsible for any delays caused by fabric not correctly marked.

COM Tagging

Dealer: _____

Tagged for: _____

Product No.: _____

P.O. No.: _____

Ack. No.: _____

COM Shipping Address:

Bernhardt Design
Plant # 7T Door #10
1402 Morganton Blvd. SW
Lenoir, NC 28645

COM Disclaimer

Bernhardt Design is not responsible for any unclaimed COM 30 days after shipment of Bernhardt Design acknowledgment. It is the responsibility of the dealer to request the return of excess COM on the initial purchase order.

Wood Finishes

Bernhardt Design tables are available in finishes that are compatible with credenzas and seating finishes. However, finishes on tables may vary slightly from those on seating due to the natural characteristics of the wood. No absolute match is implied or guaranteed.

Light Finishes

Bernhardt Design offers lighter finishes on certain veneers and solid woods. When specifying light finishes the natural characteristics of the wood will be visible and color will vary.

Natural characteristics include the natural discolorations of the wood substance and color variations in glued up stock. These natural characteristics are not considered defects by Bernhardt Design, and therefore merchandise will not be replaced.

Special Finishes

Special finishes, made to customer specifications and subject to factory approval, may be available at a **10% net upcharge with a \$500 net minimum**.

Additional leadtime may be required for special finish items. Special finish orders will not be acknowledged until the special finish sample is approved in writing and received by Bernhardt Design Customer Service. Special finish orders are not subject to revision or cancellation after acknowledgment.

Installation and Maintenance

All freestanding tables and credenzas are equipped with leveling devices. Local floor conditions vary, and it is always necessary to properly adjust leveling devices. Proper leveling is essential to the alignment and function of doors and drawers.

Improperly leveled units result in misaligned doors and drawers and may impair locking mechanisms or other functional hardware.

After the initial installation of credenzas, it may be necessary to readjust and align the units to compensate for settling. This should be expected as a matter of routine maintenance and follow-up to assure proper case function.

Proper installation of Bernhardt Design tables and credenzas is the responsibility of the dealer. Improperly installed units can result in permanent damage to case components. Damage due to improperly installed furniture not covered under product warranty.

Orders combining custom design with standard product cannot be scheduled for production until custom items are approved. Custom design orders are not subject to revision or cancellation after acknowledgment.

Care and Cleaning

Finished wood surfaces should be cleaned with a soft damp cloth, wiping in the direction of the grain. Furniture should be buffed dry immediately with a soft cloth.

Design and Patent Rights

All of the products shown in Bernhardt Design catalogs and described in Bernhardt Design price lists are, and remain, the property of Bernhardt Design, with the sole right reserved to manufacture and to distribute.

Some of the product designs shown are patented in the United States and will remain the property of Bernhardt Design. Any reproduction of the products constitutes an infringement of patented copyright laws and will be subject to prosecution.

Environmental

Some tables and credenzas are LEVEL® for ANSI/BIFMA e3-2019 – Furniture Sustainability Standard and SCS Indoor Advantage™ Gold certified. Visit the product page at bernhardtdesign.com for certifications.

Preferred Carrier Guaranteed Freight Rates

Freight charges will be applied to orders as a separate line item based on the zones listed. Rates are based on zones with a minimum for each zone. All zones are located within the Continental United States.

The freight amount is calculated on the total merchandise list COM price. Additional freight fuel surcharges may apply. Rates are based on deliveries made Monday through Friday, 8 am until 5 pm.

All orders are shipped by Bernhardt Design company trucks or preferred carriers specified by Bernhardt Design. **If a purchase order does not specify that the product must ship complete, Bernhardt Design reserves the right to select the most effective shipping method necessary, including split shipments.** Dealer warehouse information, including phone number and contact name, must be specified on the purchase order.

Zone	Percent	Minimum
Zone 1	3%	\$150
Zone 2	4%	\$150
Zone 3	5%	\$150
Zone 4	5.5%	\$150
Zone 5	6%	\$150

Percent bases on List Price.

Direct site deliveries may be requested with an additional freight cost. Requests for direct site deliveries must be made 2 weeks prior to the scheduled ship week and meet the following criteria:

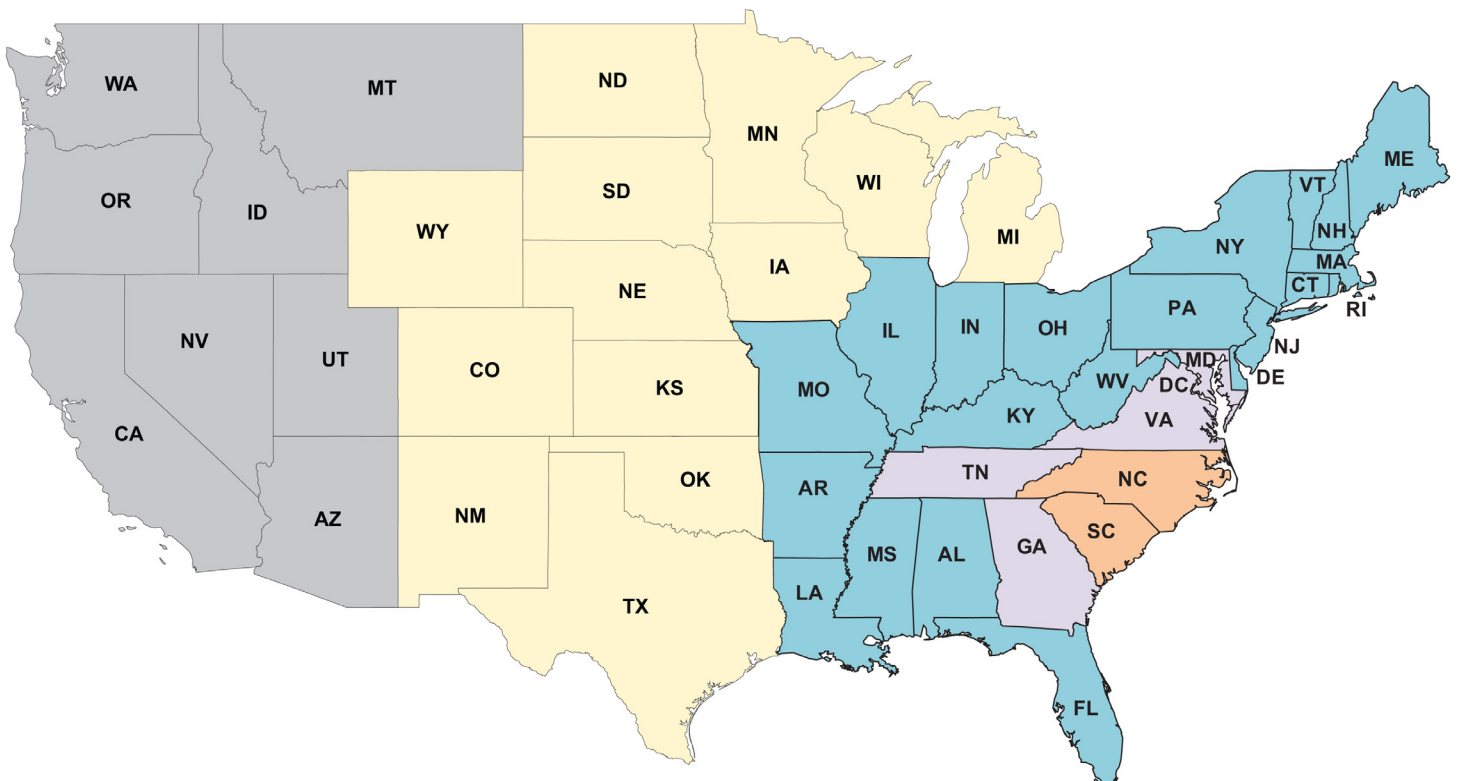
- Minimum of half truckload
- Delivery site accessible by a 53' trailer
- Complete delivery site address with contact name and on-site phone number
- Labor available for unloading

Deliveries that do not meet the criteria must be directed to a receiver warehouse. If a receiver warehouse is not available, the dealer may make arrangements with their own 3rd party carrier. If a 3rd party carrier is elected, a contact name, phone number and e-mail address is required.

Bernhardt Design has a no touch freight policy. Drivers are not allowed to unload freight.

Weekend direct site deliveries will incur a \$500 per trailer weekend delivery fee. Weekend is defined as between 5 pm Friday and 8 am Monday.

Customers who decline GFP should refer to the shipping section of the Terms and Conditions page.



Preferred Carrier Guaranteed Freight Rates - Canada

Freight charges will be applied to orders as a separate line item based on the zones listed. Rates are based on zones with a minimum for each zone.

The freight amount is calculated on the total merchandise list COM price. Additional freight fuel surcharges may apply. Rates are based on deliveries made Monday through Friday, 8 am until 5 pm.

All orders are shipped by Bernhardt Design company trucks or preferred carriers specified by Bernhardt Design. If a purchase order does not specify that the product must ship complete, Bernhardt Design reserves the right to select the most effective shipping method necessary, including split shipments. Dealer warehouse information, including phone number and contact name, must be specified on the purchase order.

Direct site deliveries may be requested with an additional freight cost. Requests for direct site deliveries must be made 2 weeks prior to the scheduled ship week and meet the following criteria:

- Minimum of half truckload
- Delivery site accessible by a 53' trailer
- Complete delivery site address with contact name and on-site phone number
- Labor available for unloading

Deliveries that do not meet the criteria must be directed to a receiver warehouse. If a receiver warehouse is not available, the dealer may make arrangements with their own 3rd party carrier. If a 3rd party carrier is elected, a contact name, phone number and e-mail address is required.

Bernhardt Design has a no touch freight policy. Drivers are not allowed to unload freight.

Weekend direct site deliveries will incur a \$500 per trailer weekend delivery fee. Weekend is defined as between 5 pm Friday and 8 am Monday.

Customers who decline GFP should refer to the shipping section of the Terms and Conditions page.

Zone	Minimums	Freight	Avg. Bus. Days
Zone 1	\$200	5%	10-15
Zone 2	\$200	9%	10-15
Zone 3	\$200	8%	10-15
Zone 4	\$200	11%	10-15
Zone 5	Quote	Quote	

The attached rates are strictly freight and do not include brokerage fees.

