

**Monza Table Collection by PLANK**



Monza tables are designed for indoor and outdoor usage. The collection offers the ability of customizing the three table parts with individual finishes. The top is available in HPL Fundermax white or black and HPL Fenix in black. The table frame is available in white or black and the base is available in solid ash and white or black powder coat.

Tables are standard with plastic glides. Assembly Required.

**Top Solid Surface Selections**

**HPL Fundermax** - Suitable for Indoor and Outdoor Use

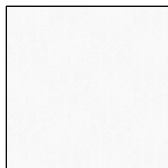
Standard Finish

**FM01** Black - 10 mm

**FM02** White - 10 mm



HPL Fundermax  
Black



HPL Fundermax  
White

**HPL Fenix** - Indoor Use Only

Standard Finish

**FE01** Black - 10 mm



HPL Fenix  
Black

**Frame Finish Selections**

**Aluminum**

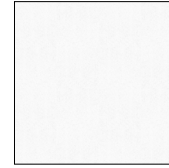
Standard Finish

**01** Black Powder Coat

**02** White Powder Coat



Black Powder Coat



White Powder Coat

**Base Finish Selections**

**Aluminum**

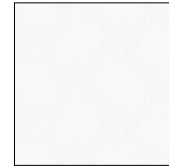
Standard Finish

**01** Black Powder Coat

**02** White Powder Coat



Black Powder Coat



White Powder Coat

**Solid Ash**

Standard Finish

**AN** Ash Natural - Solid (Indoor Use Only)

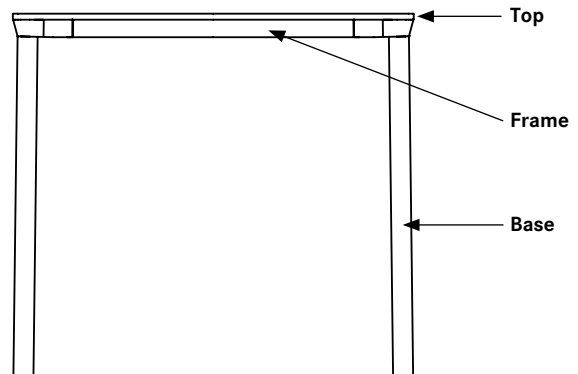
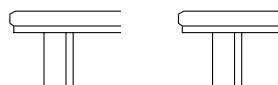


Ash Natural

**Edge Profiles**

**HPL Fundermax**

**HPL Fenix**





**31½" x 31½" Tables**

Solid ash and powder coat base

For outdoor usage, specify top material HPL Fundermax and powder coat base only.

**PLANK**

description	sku	w	d	h	specifications	HPL Fundermax	HPL Fundermax	HPL Fenix
						FM01 black	FM02 white	FE01 black
conference height	9203-01	31½	31½	28¾	powder coat base	\$ 1677	\$ 1841	\$ 2159
	9203-01	31½	31½	28¾	solid ash base	1995	2159	2476



<b>sku</b>	9203-01 conference height
9   2   0   3   -   0   1	

<b>table frame</b>	BK black WH white

<b>base material</b>	01 black powder coat 02 white powder coat AN ash natural

<b>top material</b>	FM01 black - hpl fundermax FM02 white - hpl fundermax FE01 black - hpl fenix



**31½" x 63" Tables**

Solid ash and powder coat base

For outdoor usage, specify top material HPL Fundermax and powder coat base only.

**PLANK**

description	sku	w	d	h	specifications	HPL Fundermax	HPL Fundermax	HPL Fenix
						FM01 black	FM02 white	FE01 black
conference height	9208-01	31½	63	28¾	powder coat base	\$ 2400	\$ 2717	\$ 3539
	9208-01	31½	63	28¾	solid ash base	2717	3035	3933



sku  
9208-01 conference height

table frame  
BK black  
WH white

base material  
01 black powder coat  
02 white powder coat  
AN ash natural

top material  
FM01 black - hpl fundermax  
FM02 white - hpl fundermax  
FE01 black - hpl fenix

9 | 2 | 0 | 8 | - | 0 | 1



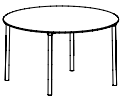
**54¾" Tables**

Solid ash and powder coat base

For outdoor usage, specify top material HPL Fundermax and powder coat base only.

**PLANK**

description	sku	w	d	h	specifications	HPL Fundermax	HPL Fundermax	HPL Fenix
						FM01 black	FM02 white	FE01 black
conference height	9224-01	54¾	54¾	28¾	powder coat base	\$ 2860	\$ 3330	\$ 4009
	9224-01	54¾	54¾	28¾	solid ash base	3177	3648	4327



sku  
9224-01 conference height

table frame  
BK black  
WH white

base material  
01 black powder coat  
02 white powder coat  
AN ash natural

top material  
FM01 black - hpl fundermax  
FM02 white - hpl fundermax  
FE01 black - hpl fenix

9 | 2 | 2 | 4 | - | 0 | 1