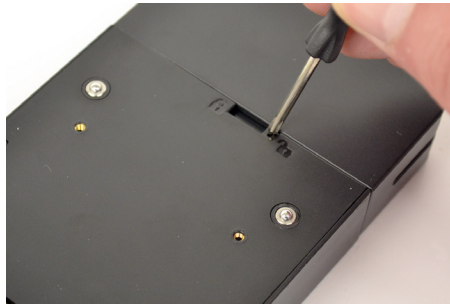
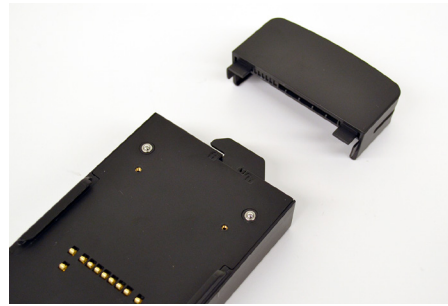


NE360 Handheld & Tablet Cases

CT3120 Installation



- 1 Slide the locking tab on the payment device case to the unlocked position using the provided small screwdriver.



- 2 Remove the cover from the payment device case.

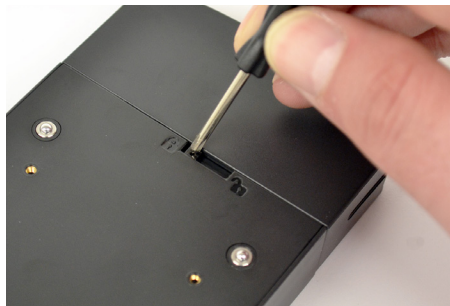


- 3 Slide the payment device into the case.

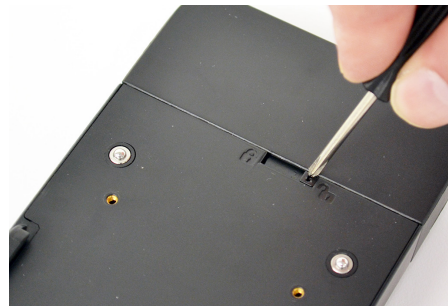


- 4 Replace the cover onto the case.

CT3121 Installation



- 5 Slide the locking tab to the locked position.



- 6 Slide the locking tab on the payment device case to the unlocked position using the provided small screwdriver.



- 7 Remove the cover from the payment device case.



- 8 Remove the back cover from the E285 payment device.

NE360 Handheld & Tablet Cases



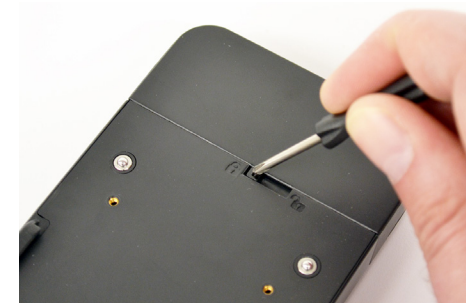
9 Insert the payment device into the case.



10 Ensure that the E285 device is fully seated on the USB-C connector in the case.



11 Replace the cover onto the case.



12 Slide the locking tab to the locked position.

CT3123 Installation



13 Slide the locking tab on the payment device case to the unlocked position using the provided small screwdriver.



14 Remove the cover from the payment device case.



15 Insert the payment device into the case.

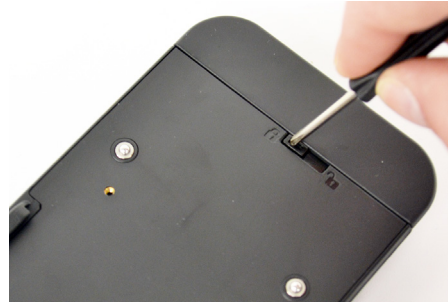


16 Slide the payment device fully into the case.

NE360 Handheld & Tablet Cases



17 Replace the cover onto the case.



18 Slide the locking tab to the locked position.



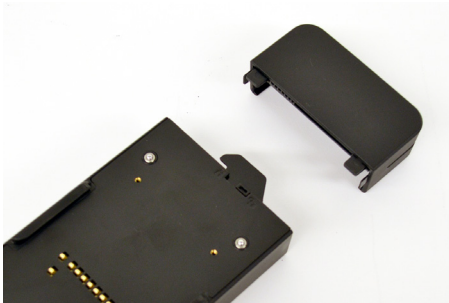
19 Plug the USB-C connector into the side of the payment device.

IMPORTANT: The USB-C connector must be unplugged prior to unlocking the case top cap for device removal or risk tearing the connector off and damaging the case. To remove the USB-C connector, carefully use finger nail or small flat screwdriver.

CT3128 Installation



20 Slide the locking tab on the payment device case to the unlocked position using the provided small screwdriver.



21 Remove the cover from the payment device case.



22 Remove the USB-C port cover.



23 Insert the payment device into the case.



24 Slide the payment device fully into the case.

CT3141 Installation

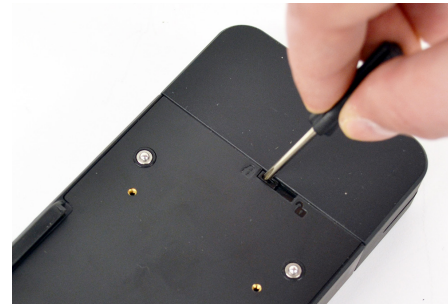


25 Plug the USB-C connector into the side of the payment device.

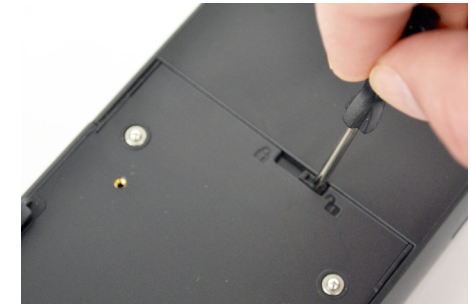
IMPORTANT: The USB-C connector must be unplugged prior to unlocking the case top cap for device removal or risk tearing the connector off and damaging the case. To remove the USB-C connector, carefully use finger nail or small flat screwdriver.



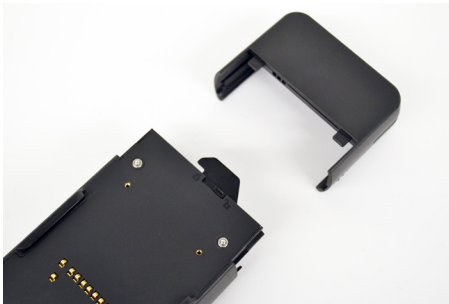
26 Replace the cover onto the case.



27 Slide the locking tab to the locked position.



28 Slide the locking tab on the payment device case to the unlocked position using the provided small screwdriver.



29 Remove the cover from the payment device case.



30 Insert the payment device into the case.



31 Ensure that the payment device is fully seated in the case.



32 Replace the cover onto the case.

NE360 Handheld & Tablet Cases

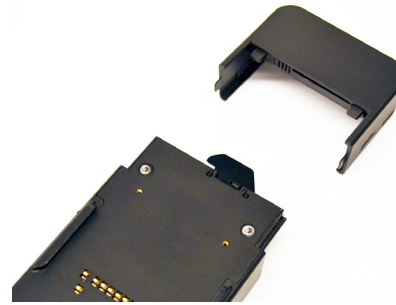
CT3150/CT3175 Installation



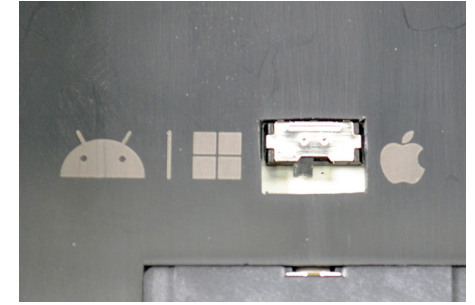
33 Slide the locking tab to the locked position.



34 Slide the locking tab on the payment device case to the unlocked position using the provided small screwdriver.



35 Remove the cover from the payment device case.



36a **For CT3150 Only:** Use the switch to select the type of tablet or handheld you are connecting to the E355: Android/Windows or Apple.



36b **For CT3150 Only:** Use the small screwdriver to position the switches to the appropriate settings.



37 Insert the payment device into the case.



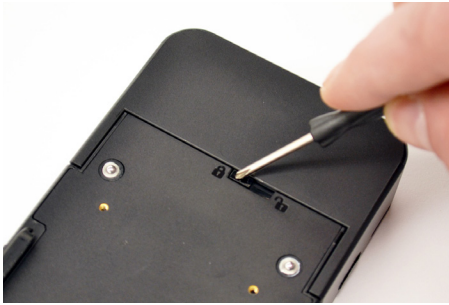
38 Ensure that the payment device is fully seated in the case.



39 Replace the cover onto the case.

NE360 Handheld & Tablet Cases

Handheld Case Installation



- 40 Slide the locking tab to the locked position.



- 41 Align the tabs on the payment device case with the slots on the host device case.



- 42 Place the payment device case onto the host device case.



- 43a Slide the payment device case into position.



- 43b When placed in the correct position the scribe mark will align with the lock icon. This is considered the "home" position.



- 44 Ensure that the screw holes are aligned on both cases.



- 45 **Optional:**
To lock the payment device case to the host case, insert and tighten the 2 small screws using the small screwdriver.



- 46 Slide the locking tab on the host device case to the unlocked position.

NE360 Handheld & Tablet Cases



47 Remove the cover from the host device case.



48 Insert the host device into the case.



49 Ensure that the host device is fully inserted and seated on the power connector in the case.



50 Replace the cover onto the host device case.

If Installing an iPhone 14



51a Due to the more pronounced camera on the back of an iPhone 14, for ease of installation, place the cover onto the device first.



51b Then insert the device into the host case.



52 Slide the locking tab to the locked position.



53a In the “home position”, the camera on the host device may be blocked by the payment device case.

NE360 Handheld & Tablet Cases



53b Slide the payment device down so that the scribe mark aligns with the camera icon.



53c The camera can now be used.



54a Place the device case onto a NE360 Charger. If the host device case is placed on the charging contacts, both devices will charge.



54b If the payment device case is placed on the charging contacts, only the payment device will charge.

Tablet Case Installation



55 **Shoulder Strap Clips (CT3151) Option:**
Remove the screws from the clips.

Note: Shoulder strap clips are a rubber material. Sharp objects may tear them. If using metal carabiners, use rounded ones.



56 Insert the clips into the holes on each side of the tablet case. Ensure that the screw holes are aligned.



57 Insert the screws into the holes and tighten using the provided small screwdriver.



58 **Hand Strap Option:**
Separate the 2 halves of the hand strap.

NE360 Handheld & Tablet Cases



59 Insert the straps into the holes in the side of the tablet case. Ensure that the screw holes are aligned.



60 Insert the screws into the holes and tighten using the provided small screwdriver.



61 Connect the 2 halves of the hand strap.



62a If attaching a payment device case to the back of a tablet host case, the back cover will need to be removed.



62b Slide the cover up from the bottom of the tablet case.



62c Lift the cover from tablet case.



63 To install a payment device case to a tablet host case, align the tabs on the payment device case with the slots on the host device case.



64 Place the payment device case onto the host device case.

NE360 Handheld & Tablet Cases



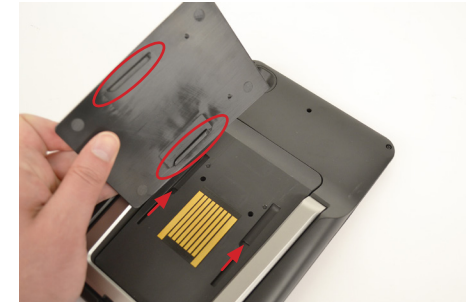
65 Slide the payment device case into position.



66a Optional:
To lock the payment device case to the host case, first ensure that the screw holes are aligned. Then insert the 2 small screws.



66b Tighten the 2 small screws using the small screwdriver.



67a Back Cover Option:
If not mounting a payment device to the back of the tablet case, the contacts can be covered using the provided cover. Align the tabs on the cover piece with the slots on the tablet case.



67b Place the cover onto the host device case.



67c Slide the cover into position.



68a Use the small screwdriver to loosen the 2 screws in the top of the tablet case.



68b If using the CT3168 case, there are 3 screws.

NE360 Handheld & Tablet Cases



69 Pull the cover out slightly from the case.



70 Lift the cover.



71 Insert the tablet into the case.



72 Ensure that the tablet is fully inserted into the case and fully seated on the power connector.



73 Close the cover over the tablet.



74 Tighten the 2 screws (3 screws if using the CT3168 case).



75a **Kickstand Options:**
Fold the kickstand out from the back of the case.



75b The kickstand can also support the tablet in a landscape orientation.

NE360 Handheld & Tablet Cases



76a Charging Options:
Place the tablet case onto a NE360 Gang Charger (CT3052) to charge the tablet and any payment device mounted on the back of the tablet case.



76b The tablet case can also be used with the single position charger (CT3051) mounted in the charger stand (CT3053). Deploy the kickstand and place the tablet case onto the charger.

Switching Payment Devices



77 Slide the locking tab on the host device case to the unlocked position.



78 Remove the cover from the host device case.



79 Remove the host device from the case.



80 Remove the 2 small screws from the host device case.



81 Slide the payment device case upwards to disengage the tabs from the slots on the host device case.



82 Remove the payment device case from the host device case.

NE360 Handheld & Tablet Cases



83 Place the new payment device case onto the host device case.



84 Slide the payment device case into position.



Cleaning Note:

It is recommended that the charging contacts on the handheld, tablet and payment terminal cases be cleaned once a month or when the contacts appear dirty.

When cleaning, do NOT spray any cleaning solution directly onto the contacts, apply the solution to a clean cloth and use that to clean the contacts. Isopropyl alcohol or any bleach free disinfecting wipes are acceptable for use.

FCC Compliance

This device complies with Part 15 of the FCC Rules. Operation is subject to the following two conditions: (1) this device may not cause harmful interference, and (2) this device must accept any interference received, including interference that may cause undesired operation.

Changes or modifications not expressly approved by the party responsible for compliance could void the user's authority to operate the equipment.

This equipment has been tested and found to comply with the limits for a Class B digital device, pursuant to Part 15 of the FCC Rules. These limits are designed to provide reasonable protection against harmful interference in a residential installation. This equipment generates, uses and can radiate radio frequency energy and, if not installed and used in accordance with the instructions, may cause harmful interference to radio communications. However, there is no guarantee that interference will not occur in a particular installation.

If this equipment does cause harmful interference to radio or television reception, which can be determined by turning the equipment off and on, the user is encouraged to try to correct the interference by one or more of the following measures:

- Reorient or relocate the receiving antenna.
- Increase the separation between the equipment and receiver.
- Connect the equipment into an outlet on a circuit different from that to which the receiver is connected.
- Consult the dealer or an experienced radio/TV technician for help.

Model: NE360S

Made in China

ISED Regulatory Compliance

This device contains licence-exempt transmitter(s)/receiver(s) that comply with Innovation, Science and Economic Development Canada's licence-exempt RSS(s). Operation is subject to the following two conditions:

- (1) This device may not cause interference.
- (2) This device must accept any interference, including interference that may cause undesired operation of the device.

This equipment complies with IC RSS-102 radiation exposure limits set forth for an uncontrolled environment.

L'émetteur/récepteur exempt de licence contenu dans le présent appareil est conforme aux CNR d'Innovation, Sciences et Développement économique Canada applicables aux appareils radio exempts de licence. L'exploitation est autorisée aux deux conditions suivantes :

- (1) L'appareil ne doit pas produire de brouillage;
- (2) L'appareil doit accepter tout brouillage radioélectrique subi, même si le brouillage est susceptible d'en compromettre le fonctionnement.

Cet équipement est conforme aux limites d'exposition aux radiations IC CNR-102 établies pour un environnement non contrôlé.