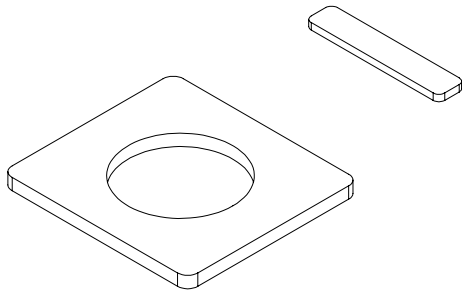
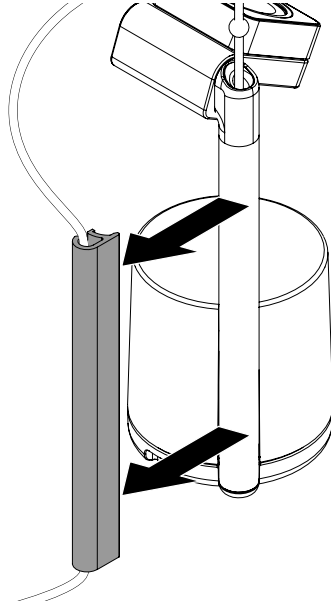


WS2/W2000

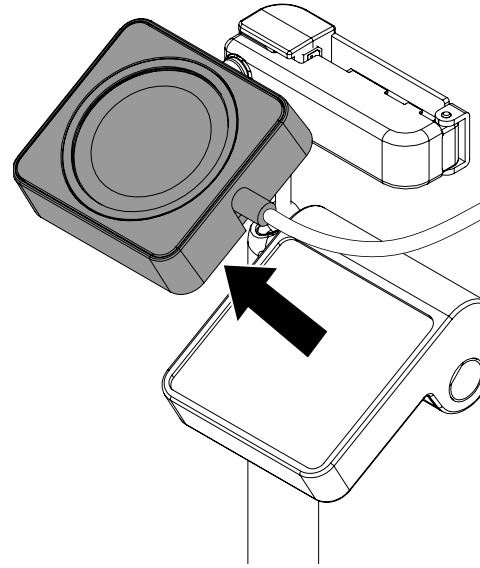
Apple OEM Kit Replacement Adhesives
ADH1011



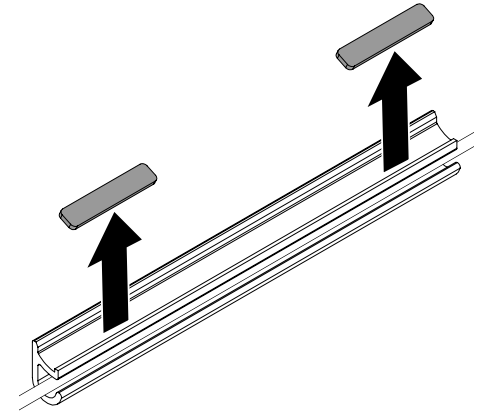
- 1** With the stand disarmed, power removed, and the wearable set aside, remove the cable guide from the back of the stand.



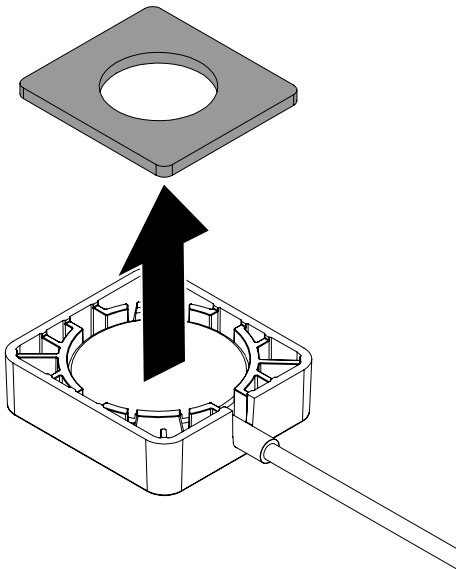
- 2** Remove the trim piece and charger from the cradle on the stand.



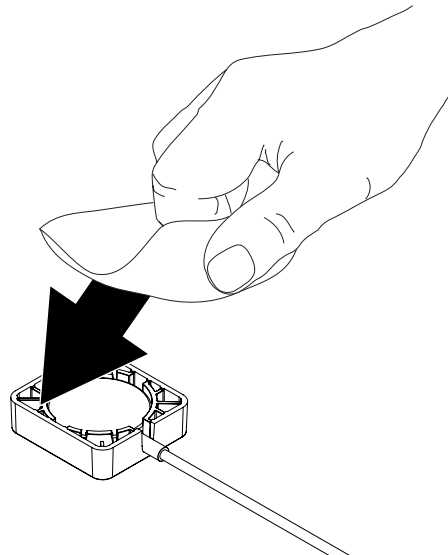
- 3** Remove the old adhesives from the cable guide.



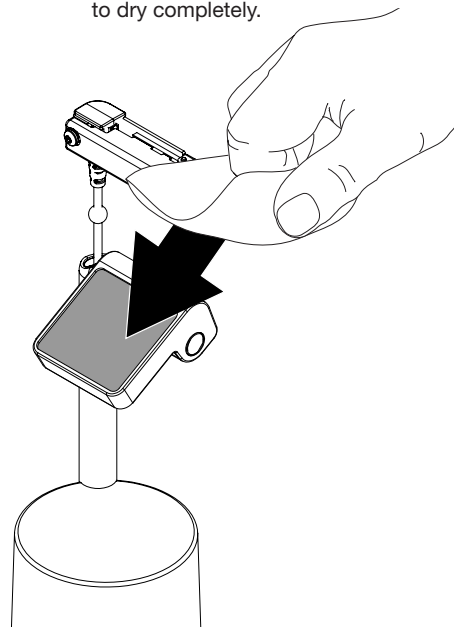
- 4** Remove the old adhesive from the underside of the trim piece.



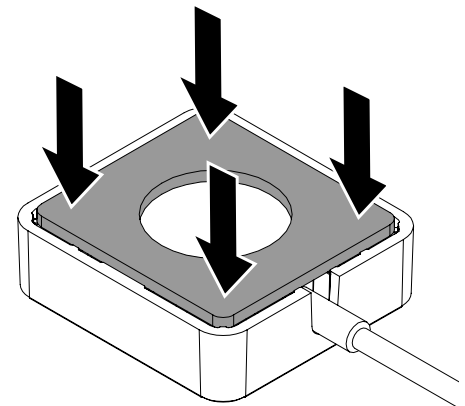
- 5** Use the provided alcohol wipe to remove any adhesive residue from the bottom of the trim piece and OEM charger. Allow it to dry completely.



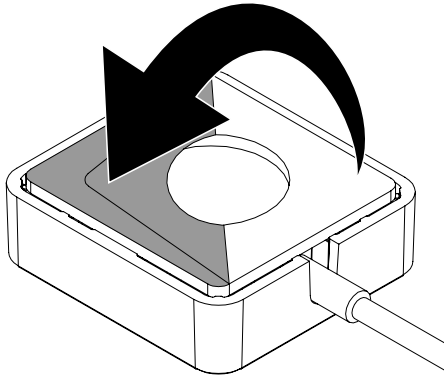
- 6** Use the provided alcohol wipe to remove any adhesive residue from the depression on the cradle. Allow it to dry completely.



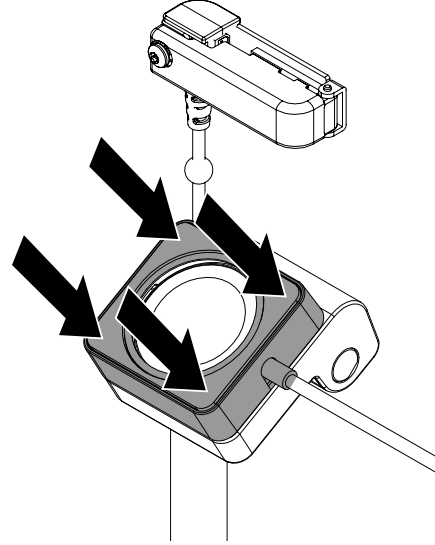
- 7** Peel one of the supplied square adhesives from its backing and place on the bottom of the OEM charger and trim piece. Apply pressure for at least 10 seconds.



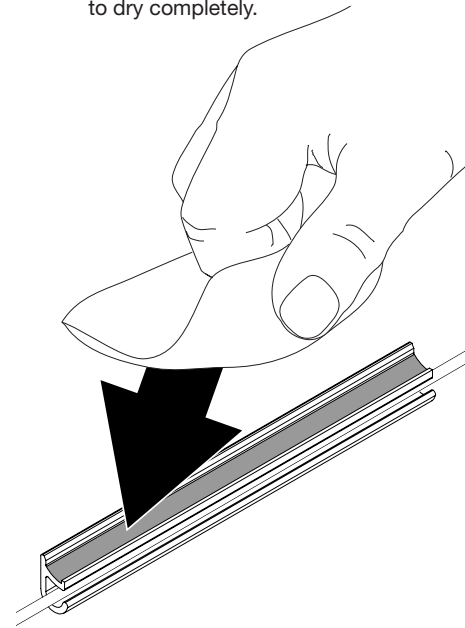
8 Peel the clear film from the adhesive.



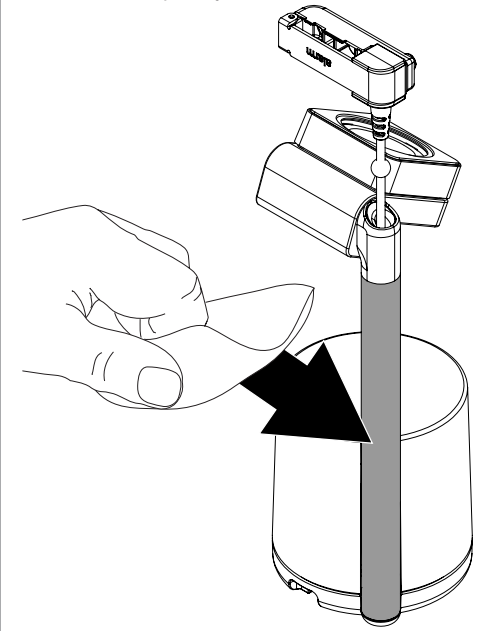
9 Place the OEM charger/cradle assembly onto the cradle. Make sure that the adhesive sits in the depression and press the trim piece, NOT the charger, against the cradle for at least 10 seconds.



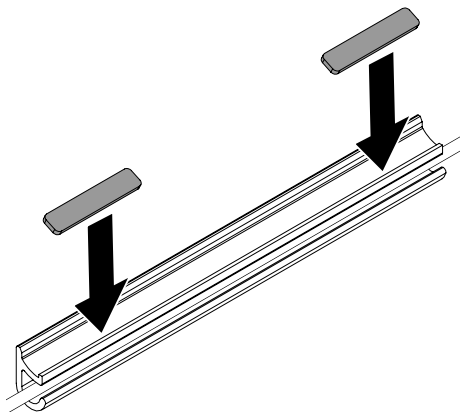
10 Use the provided alcohol wipe to remove any adhesive residue from the track on the cable guide. Allow it to dry completely.



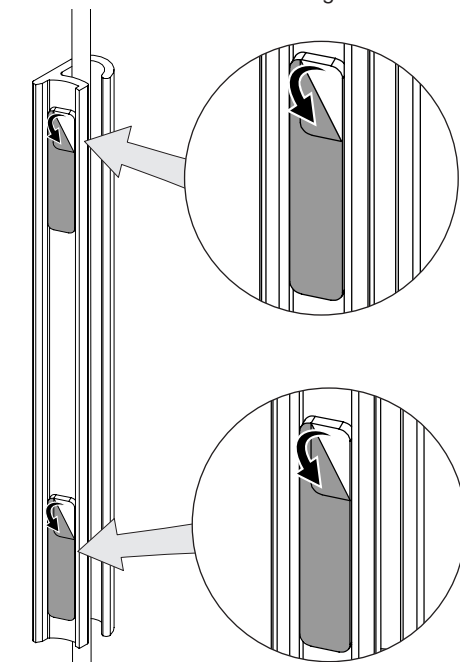
11 Use the provided alcohol wipe to clean the stem. Allow it to dry completely.



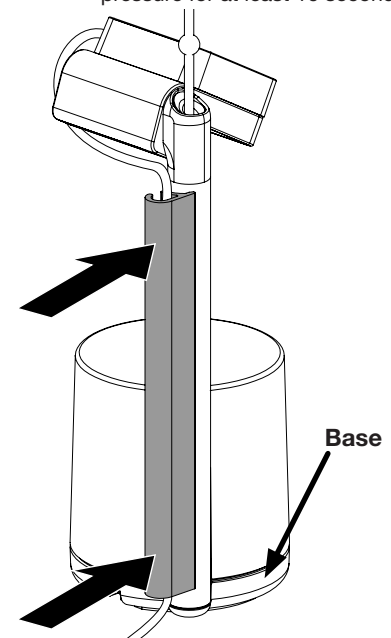
12 Peel 2 of the supplied small adhesives from their backing and place in the track on the cable guide. Apply pressure for at least 10 seconds.



13 Peel the clear film from the 2 adhesives from the cable guide.



14 Align the bottom of the cable guide to the top of the base. Apply pressure for at least 10 seconds.



SD0773 Rev0 07/28/21

invue

www.invue.com

NA / LATAM // 704.752.6513 • 888.55.INVUE
EMEA // +31.23.8900150
APAC // +852.3127.6811

© 2021 InVue Security Products Inc. All rights reserved.
InVue is a registered trademark of InVue Security Products.