

# Enhance customer service and increase sales.



The Showcase Lock is designed specifically for swing out glass doors on a wood frame. The Showcase Lock easily installs on single or double swing out doors. One lock can often replace two mechanical locks. The Showcase Lock's mounting bracket is all metal, ensuring lock strength and proper alignment. The operational efficiency, improved customer service and speed to check out makes Smart Lock the perfect locked cabinet solution.

- › Sales associates are empowered to access locked display cabinets, delivering a more timely response to customers
- › Enhanced interaction with customers will result in increased sales
- › Part of the IR Ecosystem, a one key solution to storewide security.



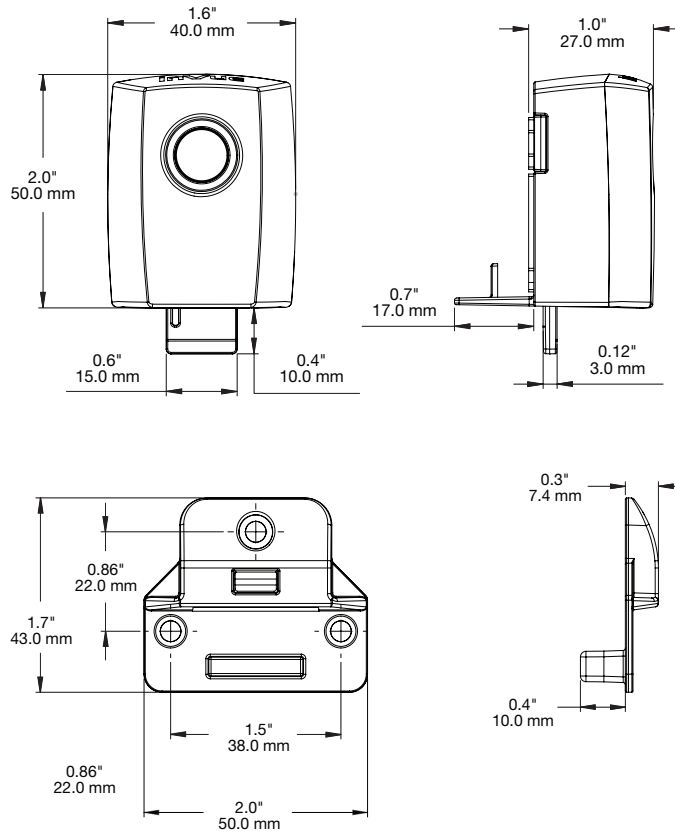
### FEATURES AND BENEFITS

- › Designed for swing-out glass doors
- › Brace option enables protection of double doors with a single lock
- › Simple installation with common tools
- › No re-keying of locks when keys are lost, broken or stolen
- › Lock Indicator Display provides visual confirmation that lock is locked or unlocked

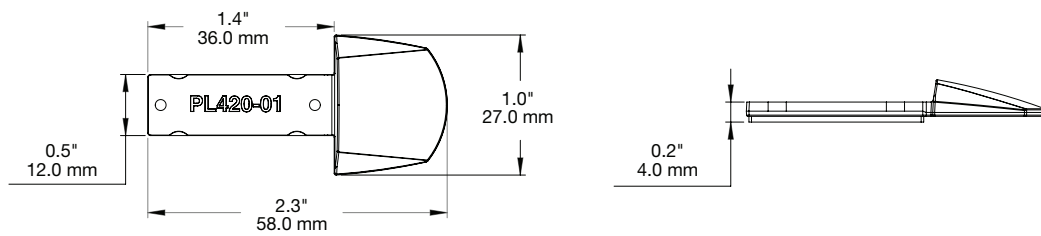


**SPECIFICATIONS**

PL401:



PL420-01:



## IR ECOSYSTEM™

The Smart Lock is part of the exclusive InVue IR Ecosystem™, a storewide single key solution that improves customer service, increases sales and provides high theft protection.

InVue has a full line of Smart Locks that are designed for all types of glass, wood and metal locked cabinets including:

- › Pull out drawers
- › Swing out doors
- › Sliding bypass doors



Handheld Electronics

Electronic Accessories

Secure Fixtures

Package Protection

Locked Cabinets

Commercial Solutions



## Smart Lock **Showcase Lock**

DESCRIPTION	ORDER CODE	CARTON QTY
<b>SHOWCASE LOCK</b>		
Showcase Lock	PL401-B PL401-W	25
Brace Accessory Kit	PL140-01	25
Replacement Adhesives (for PL401)	PL441	25
Removal Tool	PL451	25

[invue.com](http://invue.com)

©2016 InVue Security Products. No endorsement of InVue products has been made by any of the manufacturers of the products shown. Product is sold pursuant to InVue's warranty which can be found at [www.invue.com/warranty](http://www.invue.com/warranty).

**THE AMERICAS** 704.752.6513 • 888.55.INVUE

**EUROPE, MIDDLE EAST & AFRICA** +31.23.8900150

**ASIA PACIFIC** +852.3127.6811



rev. 11/14/16

