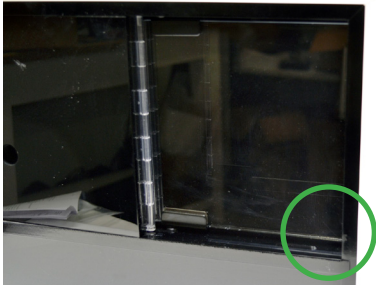
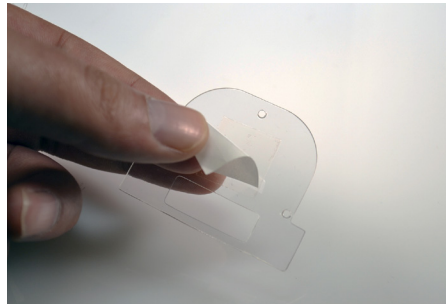


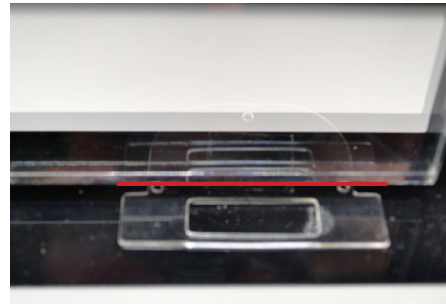
Showcase Lock PL401



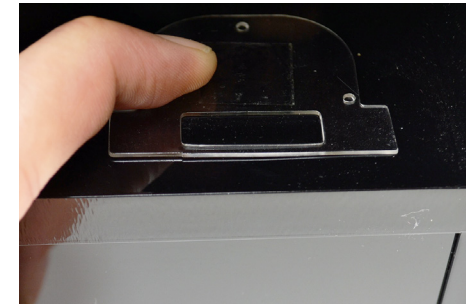
- 1 Select the swing-out side of the door panel opposite of the hinges.



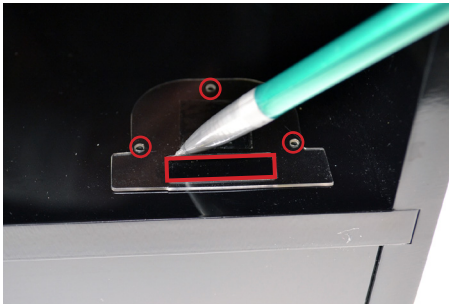
- 2 Peel the tab from the adhesive on the bottom of the mounting template.



- 3 With the door panel closed, place the template near the the end of the door panel where the lock will be located.



- 4 Apply pressure to the adhesive to hold the template in place.



- 5 Mark the position of the "pocket" and 3 screw holes.



- 6 Use a router tool to route the pocket to a minimum depth of 12.7mm (0.5 in). Drill the screw holes using a 2mm (0.08 in) drill bit.
Note: Do NOT drill holes through the cabinet walls.



- 7 Place the base plate into the pocket so that the screw holes align. Ensure that the base plate sits flush with the mounting surface.



- 8 Insert and tighten the 3 provided wood screws to secure the base plate.

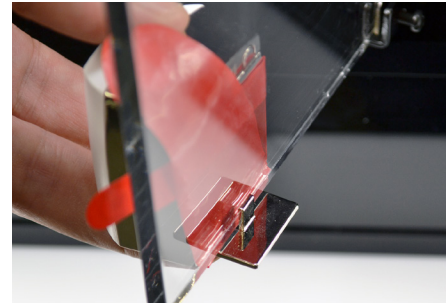
Showcase Lock PL401



- 9 Close the door panel against the base plate.



- 10 Use the provided alcohol wipe to clean the front of the door panel where the lock will sit. Allow it to dry completely.



- 11 Slide the lock onto the door panel so that the door panel sits between the lock body and the tab on the base.



- 12 Close the door panel and adjust the lock so that it aligns with the base plate.



- 13a Pull the tab for the adhesive labeled "1".



- 13b Pull the tab for the adhesive labeled "2".



- 14 Press the lock body against the door panel for at least 10 seconds to seat the adhesives.



- 15 Open and close the door panel to ensure smooth interaction of the lock with the base plate.

Showcase Lock PL401



LOCK STATUS INDICATORS



A full black circle indicates that the lock is locked



A full gray circle indicates that the lock is unlocked



A gray circle with black stripes indicates that an error has occurred. Unlock the lock. Consult step 16 to ensure proper OneKEY usage.

- 16** Place a charged and coded OneKEY against the lens on the lock. Press the button on the key and hold the key against the lens until you receive a confirmation beep.



IMPORTANT: If the key makes a “knack knack” sound an error has occurred. Either the key was pulled away too soon or there is some sort of interference. Try the key again and wait until you receive the confirmation beep.