

## S855V Custom Motorola Kit DKHC215

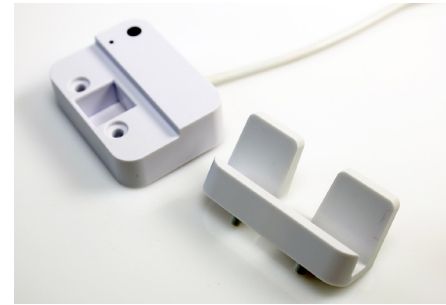
### Stand Installation



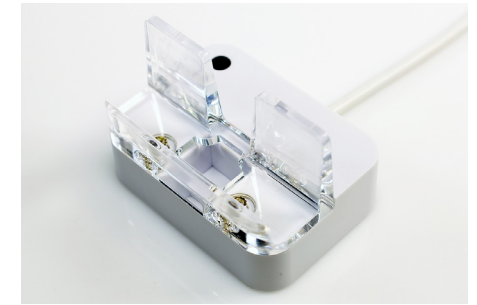
- 1 If not using an existing position, use the provided alcohol wipe to clean the surface where the stand will be placed. Allow it to dry completely.



- 2 Use a Philips head screwdriver to remove the 2 screws in the bottom of the stand.



- 3 Remove the topper from the stand.



- 4 Place the new topper onto the stand.



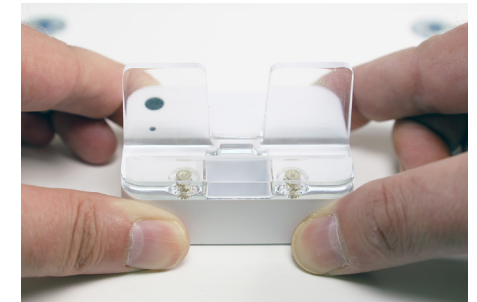
- 5 Insert and tighten the 2 screws.



- 6 **Optional:** Route the stand's power cable through a hole or slot in the fixture.



- 7 Peel the clear film from the adhesive on the bottom of the stand.



- 8 Place the stand onto the surface and apply pressure for at least 10 seconds.

## S855V Custom Motorola Kit DKHC215

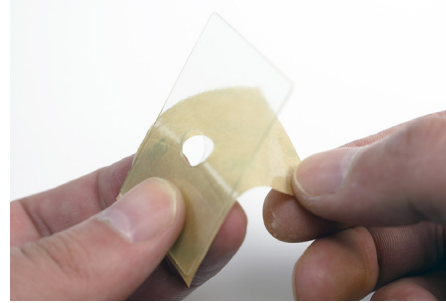
### Device Merchandising



- 9 Use a provided alcohol wipe to clean the bottom half of the device. Allow it to dry completely.



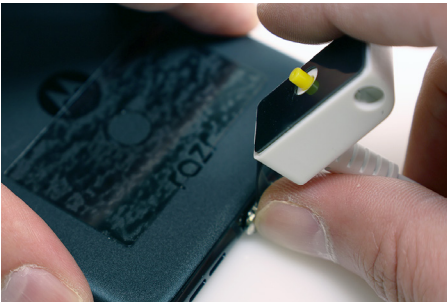
- 10 If present, remove the blue protective film from the LSE plate.



- 11 Remove the LSE plate from its backing.



- 12 Place the LSE plate onto the lower portion of the bottom half of the device (similar to what is shown). Smooth into place, removing any air bubbles, for at least 10 seconds.  
**Note:** The hole in the LSE plate (circled above) is intended for the sensor plunger to sit within.



- 13 Plug the sensor into the device.



- 14 Peel the clear film from the adhesive on the sensor.



- 15 Fold the sensor down to the LSE plate while leaving some slack in the flex connector (circled above). Ensure that the plunger sits in the hole in the LSE plate called out in step 12. Apply pressure for at least 10 seconds.



- 16 Insert the bar from the DKHC215 arm kit through the hole in the sensor.

## S855V Custom Motorola Kit DKHC215



17 Place the 2 hands onto the bar, so that they grip around the device.



18 Insert one of the screws into the hole in each of the hands.



19 Use a TT8 bit to tighten both screws to secure the hands around the device. **Note:** Do NOT fully tighten one screw at a time as this may draw the bar away from the other hand. Tighten one screw a few turns and then tighten the other. Repeat until both are secure.

### Final Assembly



20 Plug the sensor cable into the back of the stand.



21a Place the device onto the topper.



21b The device can also be displayed in the closed position.



22 Plug the stand's power cable into a PS515 power supply and plug the power supply into a power outlet.

## ▶ S855V Custom Motorola Kit DKHC215



**23** If this is a new installation, place a charged and coded OneKEY onto the IR lens and press the button to secure the position.

**24** The stand will chirp and the LED will illuminate indicating that the position is secure.